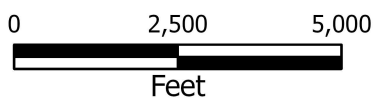


 Subject Parcel



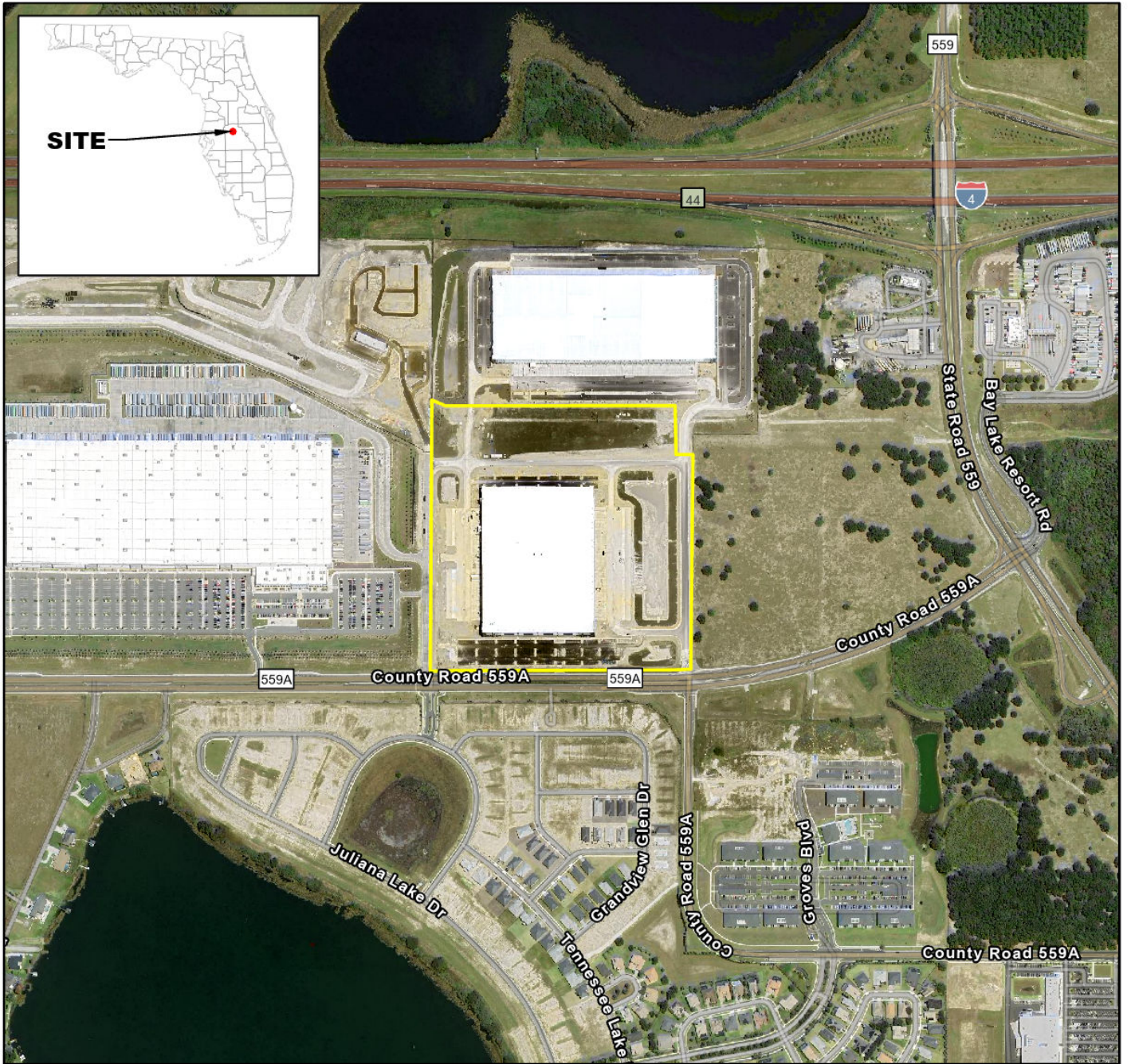
**DSL/DEM Warehouse**  
 Owner: CH Realty IX-DAL I Lakeland Auburndale, L.P.  
 Polk County, Florida

File Location: \\FLDEP1\W3\Counties\_GIS\Polk\DSL-DEM Warehouse Acquisition  
 Date Saved: 5/17/2024 3:14 PM  
 Map Created By: T. Barnes

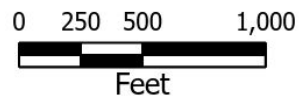




**SITE**



 Subject Parcel



**DSL/DEM Warehouse**  
Owner: CH Realty IX-DAL I Lakeland Auburndale, L.P.  
Polk County, Florida



File Location: \\FLDEP\GIS\Counties\_GIS\Polk\DSL DEM\Warehouse Acquisition  
Date Saved: 5/24/2024 1:26 PM  
Map Created By: T. Barnes

SECTION 6 - GENERAL GOVERNMENT

TOTAL: EXECUTIVE PLANNING AND BUDGETING		
FROM GENERAL REVENUE FUND . . . . .	11,808,277	
TOTAL POSITIONS . . . . .	104.00	
TOTAL ALL FUNDS . . . . .		11,808,277

PROGRAM: EMERGENCY MANAGEMENT

EMERGENCY PREVENTION, PREPAREDNESS AND RESPONSE

The Division of Emergency Management must submit quarterly status reports on the outstanding obligations for each federally declared disaster event to the Executive Office of the Governor's Office of Policy and Budget, the chair of the Senate Committee on Appropriations, and the chair of the House of Representatives Appropriations Committee no later than the 15th day of the month following the end of a quarter. Based on the most recent quarterly report, the division must also provide an allocation of funding by appropriation category and funds needed to meet these obligations for the budget request year.

In order to properly store, manage, maintain, and deploy emergency supplies during emergency activations and responses, the Division of Emergency Management, in consultation with the Department of Health, shall solicit procurement proposals for the lease, acquisition, or construction of warehouse storage space as well as an inventory management solution. Proposals must be from experienced providers who can demonstrate successful past performance of projects similar in size, scope, and complexity. Proposals shall address:

1. The integration and colocation of the Division of Emergency Management and the Department of Health warehouses into a new, fully-licensed and regulatory-compliant warehouse footprint with facilities at various geographic locations that meet the state's strategic needs for safety and distribution.
2. The capability of the warehouse facilities to store emergency supplies, including food and water, health and medical supplies, and medical equipment, including personal protective equipment, durable medical equipment, and medical countermeasures, in the correct environment with appropriate security, temperature, and humidity controls and in compliance with licensing and regulatory standards. Facility square footage shall be sufficient to access, maintain, inventory and distribute such supplies, which includes a PPE inventory pursuant to section 252.35(2)(u), Florida Statutes.
3. A staffing plan that ensures facility staff have appropriate knowledge, skills, and training to maintain, organize, identify, and package all types of emergency supplies, including medical equipment.
4. An inventory and quality management system that tracks and traces, in real-time, the state's emergency supplies. The system must be able to track the number, type, location, and expiration date of supplies in real-time; facilitate the regular testing, maintenance, and rotation of supplies and equipment; and provide real-time reporting to assist in the state's emergency response.

Proposals should identify the one-time and on-going costs associated with site selection and preparation, design and construction, retrofitting or renovations, leasing, utilities, software, and staffing, as appropriate. A proposal for an inventory management system is not required to be bundled with a proposal for the lease, acquisition, or construction of warehouse storage space. The division, with the Department of Health, shall develop a report that summarizes the proposals received; compares the costs and benefits of the proposals to the existing storage model; and identifies the most appropriate and cost-effective solution. The report shall be submitted to the Governor, the President of the Senate, and the Speaker of the House of Representatives by November 30, 2022.

	APPROVED SALARY RATE	10,388,371	
2614	SALARIES AND BENEFITS	POSITIONS	198.00
	FROM GENERAL REVENUE FUND . . . . .		3,773,304
	FROM ADMINISTRATIVE TRUST FUND . . .		3,213,057
	FROM EMERGENCY MANAGEMENT		
	PREPAREDNESS AND ASSISTANCE TRUST		
	FUND . . . . .		3,273,827
	FROM FEDERAL GRANTS TRUST FUND . . .		3,955,867



SECTION 6 - GENERAL GOVERNMENT

TOTAL: LEGISLATIVE APPROPRIATIONS SYSTEM/PLANNING AND BUDGETING SUBSYSTEM		
FROM TRUST FUNDS . . . . .		6,532,569
TOTAL POSITIONS . . . . .	48.00	
TOTAL ALL FUNDS . . . . .		6,532,569

EXECUTIVE PLANNING AND BUDGETING

2666	SALARIES AND BENEFITS	POSITIONS	110.00	
	FROM GENERAL REVENUE FUND . . . . .		12,302,202	
2667	LUMP SUM			
	EXECUTIVE OFFICE OF THE GOVERNOR - OFFICE OF PLANNING AND BUDGETING			
	FROM GENERAL REVENUE FUND . . . . .		5,029,383	
2668	SPECIAL CATEGORIES			
	TRANSFER TO DIVISION OF ADMINISTRATIVE HEARINGS			
	FROM GENERAL REVENUE FUND . . . . .		13,058	
2669	SPECIAL CATEGORIES			
	RISK MANAGEMENT INSURANCE			
	FROM GENERAL REVENUE FUND . . . . .		39,749	
2670	SPECIAL CATEGORIES			
	FEDERAL GRANTS MANAGEMENT SYSTEM			
	FROM GENERAL REVENUE FUND . . . . .		5,000,000	

Funds in Specific Appropriation 2670 are provided to the Executive Office of the Governor for the implementation of a federal aid tracking system. Of these funds, 75 percent shall be held in reserve. The office is authorized to submit quarterly budget amendments to request release of funds being held in reserve pursuant to the provisions of chapter 216, Florida Statutes, and based on planned quarterly expenditures. Release is contingent upon approval of a detailed operational work plan and a monthly spend plan that identifies all project work and costs budgeted for Fiscal Year 2023-2024.

2671	SPECIAL CATEGORIES			
	TRANSFER TO DEPARTMENT OF MANAGEMENT SERVICES - HUMAN RESOURCES SERVICES PURCHASED PER STATEWIDE CONTRACT			
	FROM GENERAL REVENUE FUND . . . . .		31,766	
TOTAL: EXECUTIVE PLANNING AND BUDGETING				
	FROM GENERAL REVENUE FUND . . . . .		22,416,158	
	TOTAL POSITIONS . . . . .	110.00		
	TOTAL ALL FUNDS . . . . .			22,416,158

PROGRAM: EMERGENCY MANAGEMENT

EMERGENCY PREVENTION, PREPAREDNESS AND RESPONSE

The Division of Emergency Management must submit quarterly status reports on the outstanding obligations for each federally declared disaster event to the Executive Office of the Governor's Office of Policy and Budget, the chair of the Senate Appropriations Committee, and the chair of the House of Representatives Appropriations Committee no later than the 15th day of the month following the end of a quarter. Based on the most recent quarterly report, the division must also provide an allocation of funding by appropriation category and funds needed to meet these obligations for the budget request year.

In order to properly store, manage, maintain, and deploy emergency supplies, the Division of Emergency Management, in consultation with the Department of Health, shall issue Invitations to Negotiate (ITN) for a turnkey stockpile solution that includes the lease, buildout, and operation of one warehouse facility that serves as the hub facility for the storage and movement of emergency supplies in Florida during emergency activations and responses. ITN responses must be from experienced providers who can demonstrate successful past performance of projects similar in size, scope, and complexity. Respondents must have at least five years of direct experience in receiving, storing,

SECTION 6 - GENERAL GOVERNMENT

managing, and distributing state or federal stockpiles. The division shall select and recommend to the Governor, the President of the Senate, and the Speaker of the House of Representatives, the ITN response that has the best value for the state for final approval. ITN responses shall include:

1. An initial assessment of the existing inventory of supplies that includes a review of the condition of supplies, proper disposal of spoiled or renewal or disposal of expired supplies, sale of unnecessary supplies, onboarding of supplies into an inventory and quality management system, and relocation of supplies into the appropriate environment in the new hub facility.
2. The lease and buildout of the hub facility with the capability to store and manage emergency supplies, including food and water, health and medical supplies, and medical equipment such as personal protective equipment, durable medical equipment, and medical countermeasures, in the correct environment with appropriate security, temperature, and humidity controls and in compliance with industry licensing and regulatory standards. Facility square footage, including warehouse space and surface lot area, shall be sufficient to access, maintain, inventory, and distribute such supplies.
3. A staffing plan that ensures facility staff have appropriate knowledge, skills, and training to maintain, organize, identify, and package all types of emergency supplies, including medical equipment. Staffing plans must demonstrate how staff will utilize the inventory and quality management system in day-to-day operations to support the division. The plans must identify the use and quantity of division staff and staff of the ITN respondent, as applicable, necessary to operate the hub facility. All staff, whether of the ITN respondent or the division, shall operate at the direction of the division.
4. An inventory and quality management system that can track and trace, in real-time, the state's emergency supplies. The system must be able to track the number, type, location, and expiration date of supplies; facilitate the regular testing, maintenance, and rotation of supplies and equipment; and provide reporting to assist in the state's emergency response and recovery.
5. Identification of the one-time and on-going costs associated with site selection and preparation, design and construction, retrofitting or renovations, leasing, utilities, inventory assessment and relocation, software, product maintenance or rotation, and staffing, as appropriate.

	APPROVED SALARY RATE	12,366,228		
2672	SALARIES AND BENEFITS	POSITIONS	220.00	
	FROM GENERAL REVENUE FUND . . . . .		5,663,501	
	FROM ADMINISTRATIVE TRUST FUND . . . . .			3,530,830
	FROM EMERGENCY MANAGEMENT PREPAREDNESS AND ASSISTANCE TRUST FUND . . . . .			3,620,400
	FROM FEDERAL GRANTS TRUST FUND . . . . .			4,506,168
	FROM GRANTS AND DONATIONS TRUST FUND . . . . .			299,915
	FROM OPERATING TRUST FUND . . . . .			187,554
	FROM U.S. CONTRIBUTIONS TRUST FUND . . . . .			900,574
2673	OTHER PERSONAL SERVICES			
	FROM GENERAL REVENUE FUND . . . . .		348,100	
	FROM ADMINISTRATIVE TRUST FUND . . . . .			379,156
	FROM EMERGENCY MANAGEMENT PREPAREDNESS AND ASSISTANCE TRUST FUND . . . . .			1,220,456
	FROM FEDERAL GRANTS TRUST FUND . . . . .			1,219,927
	FROM GRANTS AND DONATIONS TRUST FUND . . . . .			220,531
	FROM OPERATING TRUST FUND . . . . .			108,441
2674	EXPENSES			
	FROM GENERAL REVENUE FUND . . . . .		1,189,888	
	FROM ADMINISTRATIVE TRUST FUND . . . . .			706,418
	FROM EMERGENCY MANAGEMENT PREPAREDNESS AND ASSISTANCE TRUST FUND . . . . .			1,767,367
	FROM FEDERAL GRANTS TRUST FUND . . . . .			1,168,055

SECTION 6 - GENERAL GOVERNMENT

FROM EMERGENCY MANAGEMENT PREPAREDNESS AND ASSISTANCE TRUST FUND . . . . .	2,064,539
FROM FEDERAL GRANTS TRUST FUND . . . . .	926,154

From the funds in Specific Appropriation 2704, \$5,000,000 in recurring funds from the General Revenue Fund is provided for operational expenses and management activities related to the division's emergency warehousing needs. In order to promote efficiency and not duplicate efforts, the division shall contract with the vendor it determined was in the best interest of the state to proceed with pursuant to the Invitation to Negotiate No. ITN-DEM-23-24-006 for the turnkey stockpile management of the state-owned warehouse that will serve as the hub facility for the storage and movement of emergency supplies in this state during emergency activation and response. Prior to the division occupying the state-owned warehouse, the vendor shall begin an assessment of existing inventory to ensure the buildout components are adequate and the warehouse management and response activities can be effectively deployed and implemented.

2705	SPECIAL CATEGORIES GRANTS AND AIDS - PUBLIC ASSISTANCE FROM GRANTS AND DONATIONS TRUST FUND . . . . .	233,707,143
	FROM U.S. CONTRIBUTIONS TRUST FUND . . . . .	430,106,982
2706	SPECIAL CATEGORIES PUBLIC ASSISTANCE - STATE OPERATIONS FROM GRANTS AND DONATIONS TRUST FUND . . . . .	136,036,183
	FROM U.S. CONTRIBUTIONS TRUST FUND . . . . .	1,852,508
2707	SPECIAL CATEGORIES CORONAVIRUS (COVID-19) - PUBLIC ASSISTANCE - STATE OPERATIONS FROM U.S. CONTRIBUTIONS TRUST FUND . . . . .	3,997,207
2708	SPECIAL CATEGORIES GRANTS AND AIDS - HAZARD MITIGATION FROM U.S. CONTRIBUTIONS TRUST FUND . . . . .	75,811,250
2709	SPECIAL CATEGORIES GRANTS AND AIDS - CORONAVIRUS (COVID-19) - STATE AND LOCAL GOVERNMENTS FROM GRANTS AND DONATIONS TRUST FUND . . . . .	517,325
	FROM U.S. CONTRIBUTIONS TRUST FUND . . . . .	275,912,352
2710	SPECIAL CATEGORIES HAZARD MITIGATION - STATE OPERATIONS FROM GRANTS AND DONATIONS TRUST FUND . . . . .	788
	FROM U.S. CONTRIBUTIONS TRUST FUND . . . . .	8,018,686
2711	SPECIAL CATEGORIES DISASTER ACTIVITY - STATE OBLIGATIONS FROM EMERGENCY MANAGEMENT PREPAREDNESS AND ASSISTANCE TRUST FUND . . . . .	400,000
	FROM GRANTS AND DONATIONS TRUST FUND . . . . .	5,102,786
2712	SPECIAL CATEGORIES OTHER NEEDS ASSISTANCE PROGRAM - STATE OBLIGATIONS FROM GRANTS AND DONATIONS TRUST FUND . . . . .	1,002
2713	SPECIAL CATEGORIES MIAMI-DADE COUNTY SURFSIDE CONDOMINIUM - STATE OPERATIONS FROM U.S. CONTRIBUTIONS TRUST FUND . . . . .	80,406

compliance, shall revert and is appropriated to the division for Fiscal Year 2024-2025 for the same purpose.

SECTION 232. The unexpended balance of funds appropriated to the Executive Office of the Governor, Division of Emergency Management, in section 202 of chapter 2023-239, Laws of Florida, for Urban Search and Rescue projects, shall revert and is appropriated to the division for Fiscal Year 2024-2025 for the same purpose.

SECTION 233. The unexpended balance of funds appropriated to the Executive Office of the Governor, Division of Emergency Management, for the Mobile Home Tie-Down Program in section 203 of chapter 2023-239, Laws of Florida, shall revert and is appropriated to the division for Fiscal Year 2024-2025 for the same purpose.

SECTION 234. The unexpended balance of funds appropriated to the Executive Office of the Governor, Division of Emergency Management, for the Hazard Mitigation Grant Program in Specific Appropriation 2690 and section 199 of chapter 2023-239, Laws of Florida, shall revert and are appropriated to the division for Fiscal Year 2024-2025 for the same purpose.

SECTION 235. There is hereby appropriated for Fiscal Year 2023-2024, \$30,375,083 in nonrecurring funds from the Federal Grants Trust Fund to the Executive Office of the Governor, Division of Emergency Management, for Preventing Outages and Enhancing the Resilience of the Electric Grid projects. The unexpended balance of funds remaining shall revert and is appropriated to the division for Fiscal Year 2024-2025 for the same purpose. This section is effective upon becoming a law.

SECTION 236. There is hereby appropriated for Fiscal Year 2023-2024, \$1,092,554 in nonrecurring funds from the Emergency Preparedness and Assistance Trust Fund to the Executive Office of the Governor, Division of Emergency Management, for county emergency management program grants which were not reimbursed prior to the end of the fiscal year due to emergency activations. This section is effective upon becoming a law.

**SECTION 237.** The nonrecurring sum of \$116,000,000 from the General Revenue Fund is appropriated to the Division of Emergency Management in fixed capital outlay for Fiscal Year 2023-2024 to purchase and build out the warehouse facility identified in the Invitation to Negotiate No. ITN-DEM-23-24-006. From these funds up to \$75,000,000 may be used for the purchase price and closing costs of the facility. Funds may not be expended for the buildout of the warehouse until the warehouse has been purchased by the state. The facility will serve as the hub facility for the storage and movement of emergency supplies in this state during emergency activation and response. This section is effective upon becoming a law.

SECTION 238. From the funds appropriated to the Division of Emergency Management within the Executive Office of the Governor in section 8 of chapter 2022-272, Laws of Florida, \$33,000,000 shall revert and is appropriated for Fiscal Year 2023-2024 to the division to provide the full amount of the required match of local governments within fiscally constrained counties for Hazard Mitigation Assistance grants related to the Federal Emergency Management Agency disaster declaration for Hurricane Idalia to offset the costs that such local governments would otherwise be required to provide pursuant to s. 252.37(6), Florida Statutes. Such local governments must enter into agreements with the division to have their portions of the match requirements waived. The division shall report quarterly to the chair of the Senate Committee on Appropriations, the chair of the House of Representatives Appropriations Committee, and the Executive Office of the Governor's Office of Policy and Budget on the amount of match requirements waived, agreements entered into with local governments, and the amount of remaining appropriated funds. The unexpended balance of funds remaining on June 30, 2024, shall revert and is appropriated to the division for Fiscal Year 2024-2025 for the same purpose. This section is effective upon becoming a law.

SECTION 239. From the funds appropriated to the Division of Emergency Management within the Executive Office of the Governor in section 8 of chapter 2022-272, Laws of Florida, \$7,000,000 shall revert and is appropriated for Fiscal Year 2023-2024 to the division to assist local governments with debris removal related to recovery from the impact of tornadic activity on January 9, 2024, and confirmed by the National Weather Service as significant on the Enhanced Fujita Scale. Such local governments must enter into agreements with the division to receive grants or reimbursements, as appropriate, of costs incurred related to