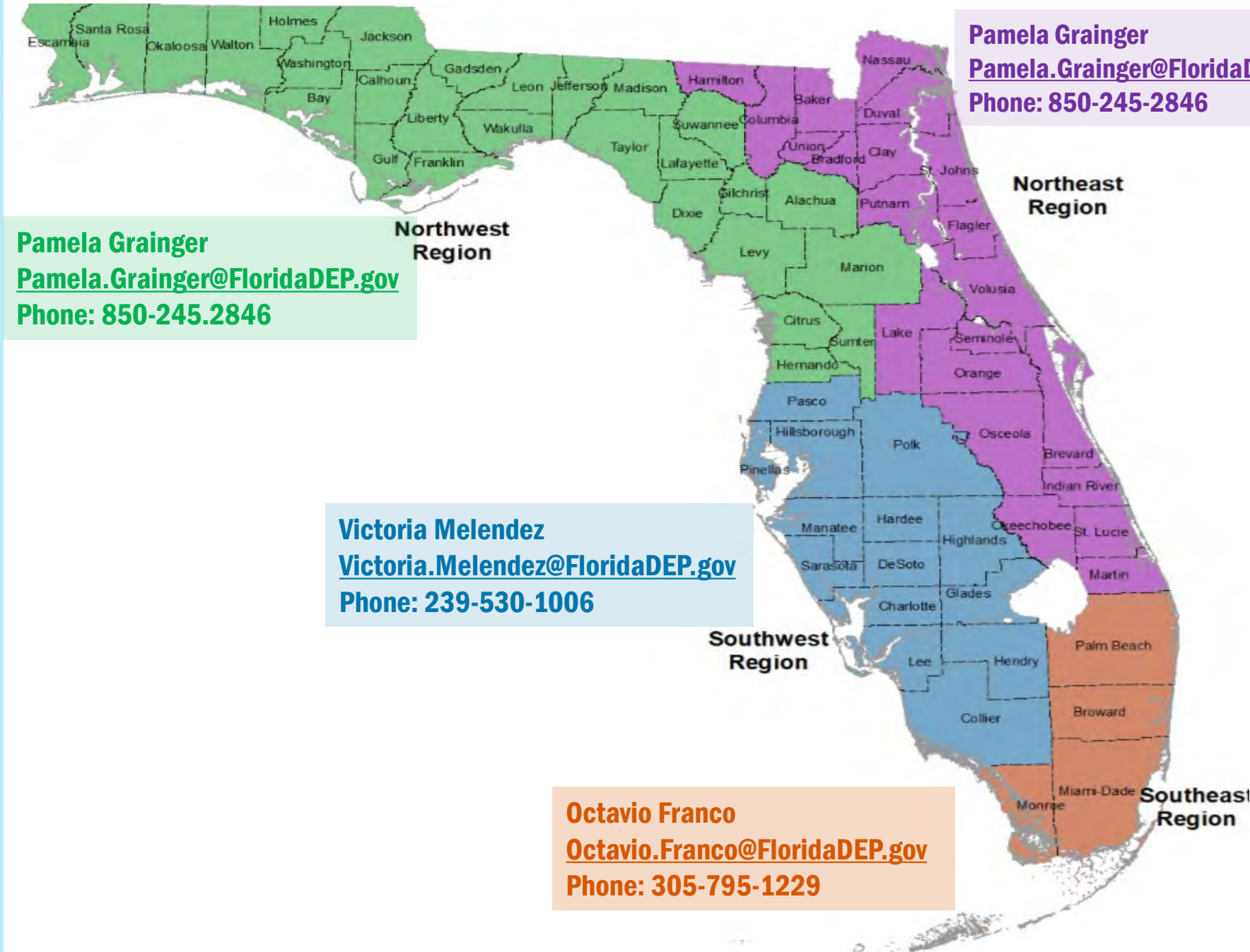




Designation Process for Clean Marina and Clean & Resilient Marina

Pamela Grainger, Program Manager
Clean Boating Programs, Tallahassee, Florida
850-245-2846 or Pamela.Grainger@FloridaDEP.gov



Pamela Grainger
Pamela.Grainger@FloridaDEP.gov
Phone: 850-245.2846

Pamela Grainger
Pamela.Grainger@FloridaDEP.gov
Phone: 850-245-2846

Victoria Melendez
Victoria.Melendez@FloridaDEP.gov
Phone: 239-530-1006

Octavio Franco
Octavio.Franco@FloridaDEP.gov
Phone: 305-795-1229

Our Regional Coordinators



Kennedy Point YC

Clean Boating Programs



Clean Boating Programs promote a clean marine environment and help improve water quality. These programs encourage the prevention and reduction of water pollution.



- **Clean Vessel Act** Provides funds to marinas for pumpout equipment
- **Clean Marina** Assist marinas with implementing Best Management Practices
- **Clean Boater** Educational program for the boating community
- **Clean & Resilient Marina** Builds on the Clean Marina and promotes resilient operations



What is the Clean Marina Program?

A voluntary designation program that stresses environmental and managerial best management practices (BMPs) that exceed regulatory requirements. Marinas, boatyards and retailers are encouraged to incorporate these BMPs at their facilities to:

- ✓ Reduce pollution and improve waterways
- ✓ Protect fish and wildlife habitat
- ✓ Promote environmentally sound practices



Criteria Needed for Designation



Environmental Management

- Compliance with regulatory requirements
- Resource personnel and trained marina staff
- Protects sensitive habitats
- Initiates and promotes sustainability



Environmental Quality

- Marina is clean with no signs of oil sheen, sewage or litter
- Discharge of raw sewage prohibited
- Promote eco-friendly cleaners
- Educate Boaters



Environmental Services

- Clean restrooms
- Docks and grounds well-maintained
- Provide pumpout services
- Distribute educational materials to boaters



Designation Process





Getting Your Facility Designated

Application Stage

Application

Florida Department of Environmental Protection
Clean Marina Application

FACILITY INFORMATION IS

Clean Marina Clean Boatyard Clean Marina Facility Clean & Restored Marina

Facility Name: _____ Phone #: _____ County: _____
 Contact: _____
 Email Address: _____ Website: _____
 Facility Address: _____ City: _____ Zip Code: _____
 Mailing Address: _____ City: _____ Zip Code: _____
 Lease/Owner: _____ City: _____ Zip Code: _____
 Lease/Owner Address: _____ City: _____ Zip Code: _____
 Submerged Lands Lease #: _____ N/A _____
 Environmental Resource Permit #: _____ N/A _____
 Number of Slips: _____ Wet: _____ Dry: _____ Mooring: _____
 Salt or Fresh Water? _____
 Does your facility offer public access? _____
 Is the facility owned/operated by a governmental entity, city, county, state? _____
 Facility's Coordinates (Decline/Degrees): _____ Latitude: _____ Longitude: _____
 Find your facility's coordinates here: <https://www.fdot.org>

FACILITY TYPE - SELECT ALL THAT APPLY

Marine Marine Retailer (Parts & Service) Restaurant
 Yacht Club / Boat Club Mooring Piers Public Docking
 Boatyard Dock/Marina / Condo Marina Resort/Lodging

FACILITY SERVICES - SELECT ALL THAT APPLY

Recycling Pumpout Equipment Sewer Stormwater Portable
 Marine Store Engine Maintenance / EPA IDE Boat Repair / Painting / EPA IDE
 Boat Wash Boat Repair / Painting / EPA IDE
 Clean Site Practices Fueling Trash Disposal
 Environmental Stair National Pollution Discharge Elimination System Stormwater (NPDES)
 Live Abodes Stormwater #:
 Boat Wash Other Structure #:
 Other Services Water Sector #:

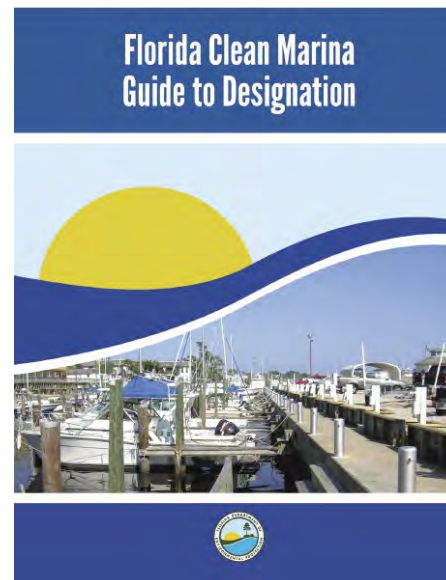
For information on grant funding for pumpout equipment, visit the link below to complete the CVA application.
www.floridacleanmarina.com

Signature: _____ Date: _____

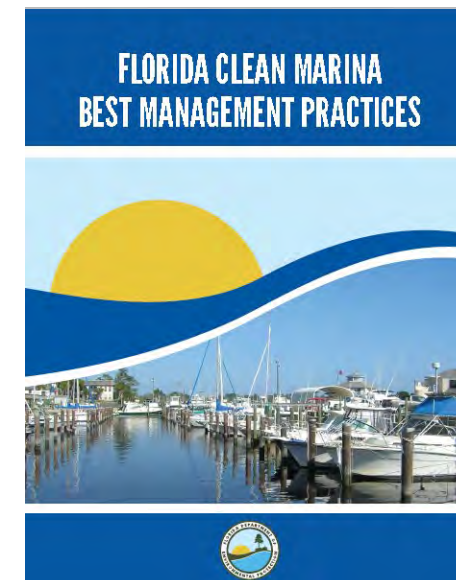
Download Form: [Clean Marina Application](#) | [Boatyard Application](#) | [Marina Facility Application](#) | [Clean & Restored Marina Application](#)
 Mail to: 2000 Environmental Boulevard, MS 203, Tallahassee, FL 32309-2000 | Call: (904) 201-2000

DEP Application Form # 2019-0000

CMAP



BMPs





Getting Your Facility Designated

File Review Stage (Lease/Permit)

A department file review aka “compliance check” is done to verify permits are current with:

- State Lands
- Storage Tanks
- National Pollutant Discharge Eliminations System (NPDES)
- Hazardous Waste
- Environmental Resource Permit (ERP)



What is Compliance?

Compliance is verification that all leases, fees, reporting, registrations, and permits are current.

- ✓ State Lands Lease – Must pass inspection and be current with fees and reporting
- ✓ Storage tanks – Must pass inspection and be current with fees
- ✓ NPDES – Must pass inspection and be current with reporting if applicable
- ✓ Hazardous waste – Must be maintain records for at least three consecutive years
- ✓ ERP – For current construction must have valid permit on file



Getting Your Facility Designated

Site Visit Stage – What we look for?

**“Love My Marina”
Emergency Action Plans**

**Hurricane Preparedness Plans?
Evacuation Plans?
Spill Prevention Plans?
Fire Safety Plans?**

Do you have a Resource Person?

Emergency Plans



Spill Kit



Containment Boom



Fire Extinguishers



Clear Docks



Clean Water



Getting Your Facility Designated

Site Visit Stage – What we look for?



Tanks



Hazardous Waste



Pressure Wash - designated area



Vessel Repairs / Shop Organized



Boat Painting



Sanding



Getting Your Facility Designated

Site Visit Stage – What we look for?



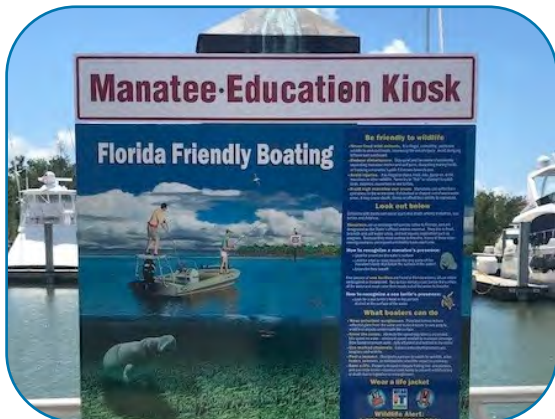
Pumpout Services



Restrooms / Laundry



Boater Education Station



Manatee Signs / Sensitive Habitats



Fish Clean Table w/ signage



Promote the use of Green Cleaners



Getting Your Facility Designated

Site Visit Stage – What we look for?



Recycle Bins



Trash Bins with lids



Do No Dispose signs



Pet Waste Station



Monofilament Bin

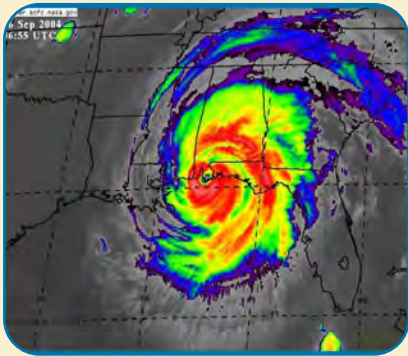


Landscaping



What are BMPs?

Activities and strategies that help prevent or reduce water pollution. Examples:



Emergencies

- Hurricane plan
- Review hurricane procedures with staff
- Post up-to-date emergency numbers
- Keep fire extinguishers available
- Train staff



Storage Tanks

- Promote use of fuel guards
- Provide collection site for used absorbents
- Inspect tanks regularly
- Prohibit detergents and emulsifiers on fuel spills



Hazardous Waste

- Keep records for three years
- Keep hazardous waste in drums or containers that are clearly label
- Do not store large amounts of hazardous materials



Fish Waste

- Educate boaters
- Establish fish-cleaning stations with trash receptacles
- Encourage boaters to dispose fish guts offshore



Sewage

- Install pumpout connections at convenient locations
- Develop regular inspections
- Post signage for proper disposal
- Encourage boaters to use shore-side facilities



What is Clean & Resilient?

This Gulf of Mexico Alliance (GOMA) initiative program complements Clean Marina practices already in place and provides additional recommendations to strengthen local marinas' ability to withstand natural and human-made disasters.

“Resilience is the capacity of human and natural/physical systems to adapt to and recover from change.”

Gulf of Mexico Alliance's Coastal Community Resiliency Team



Clean & Resilient Goals

To achieve designation, Clean & Resilient Marinas selectively implement a set of criteria designed to:

- 1. Protect human life and safety**
- 2. Reduce exposure of structures on water and land to damage**
- 3. Reduce exposure of boats to damage**
- 4. Minimize damage to property that cannot be relocated**
- 5. Resume business operations as quickly as possible**





Resiliency at Marinas

- Emergency planning
- Evacuation procedures
- Design and siting
- Floating docks
- Concrete docks
- Reinforced dry stack



- Natural shorelines
- Underground fuel tanks
- Underground utilities
- Trained dedicated staff
- Stormwater management
- Sewage handling



Resilient

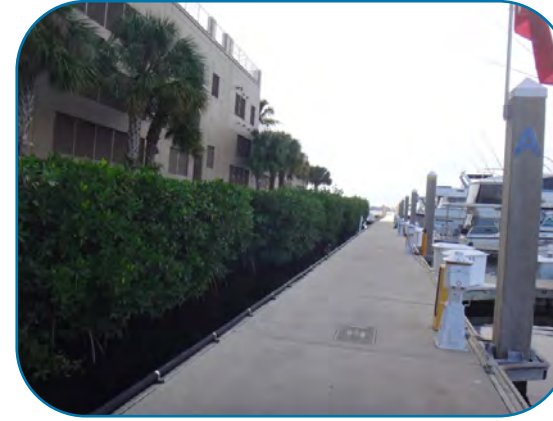
What we look for?



Evacuation Procedures



Emergency Preparedness Team



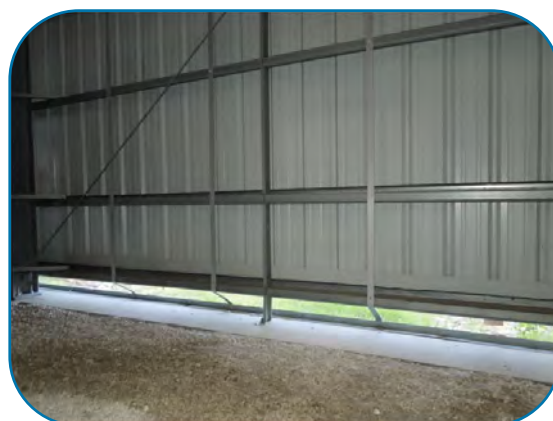
Floating and/or Cement Docks



Pilings – 70 ft & 16 in diameter



Reinforced Dry Stacks



Vented to help equalize pressure

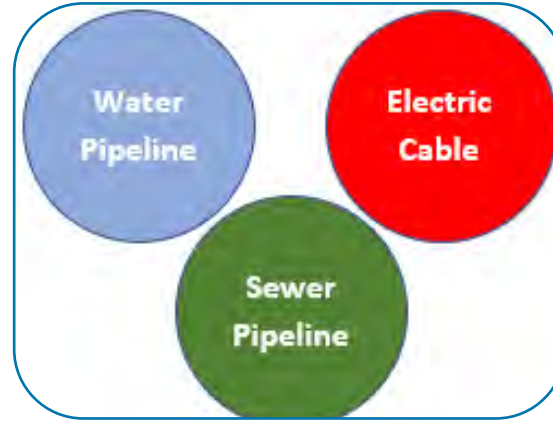


Resilient cont.

What we look for?



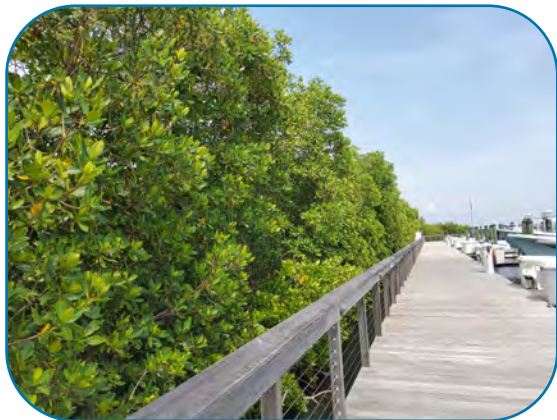
Underground Tanks



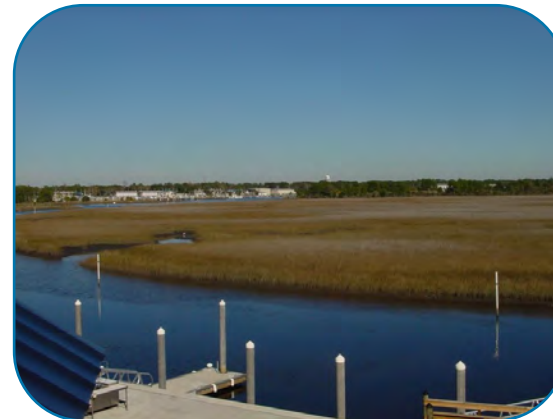
Underground Utilities



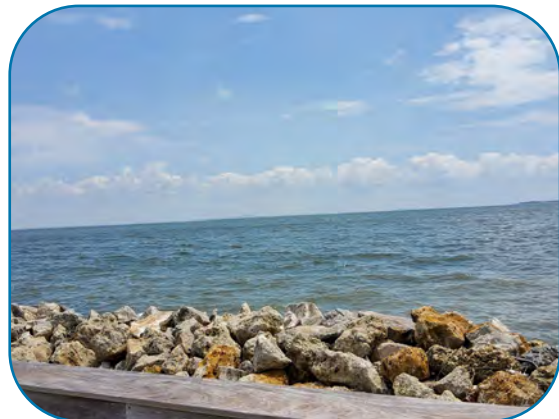
Buildings withstand high winds



Mangroves



Natural Shoreline



Sea Wall with rocks help break waves



Clean & Resilient BMPs



Marina Siting

- Piers and docks extend into naturally deep waters
- Fuel tanks are located onshore
- Dry storage racks are adequately anchored to bear hurricane winds

Emergency Preparedness

- Have active Emergency Preparedness Team
- Boat owners' requirements defined in case of emergency
- Require boaters to carry insurance

Evacuation

- Have active evacuation plan for hurricanes
- Ability to mobilize large number of boats in short amount of time
- Established wet slip evacuation procedures

Stormwater and Erosion

- Stormwater treated for pollutant removal onsite
- Natural erosion protection is used where possible to limit damage to shoreline

Education and Outreach

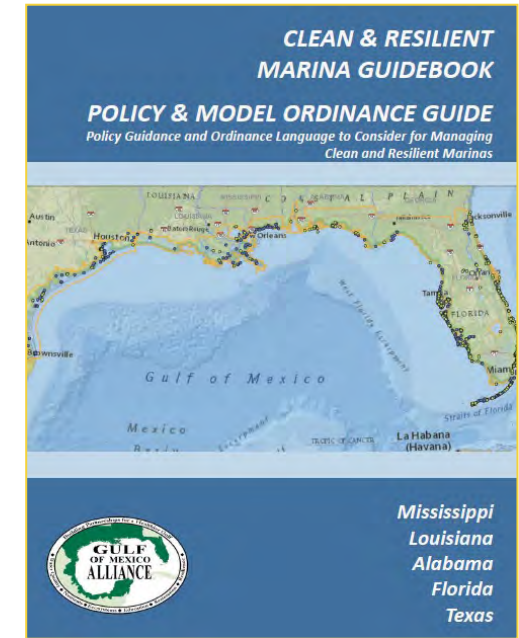
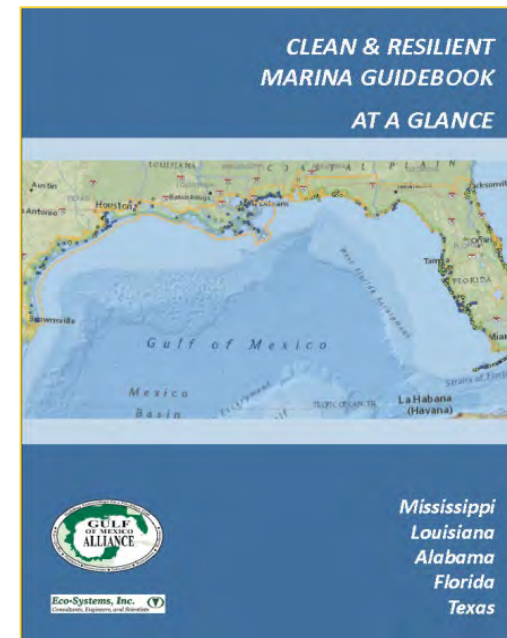
- No-wake zones are clearly defined
- Provide boaters educational materials on proper boat cleaning
- Post clearly labeled facility and vicinity maps with evacuation routes



Florida Clean & Resilient Marinas



Florida encourages currently designated facilities to add the extra level of resiliency to their certification. We have designed a flag specific for it. The designation process is the same as the Clean Marina, but with additional levels of Best Management Practices the facility must implement. These are listed in Part 3 of our CMAP.



The GOMA team created resilient guidebooks. For a more detailed review of the resilient steps, visit our [website](#):

- Guidebook “At A Glance”
- Policy Guide
- Volume I Marina Guidebook
- Volume II: Appendices



Benefits to Being Designated

- ✓ State Lands discount
- ✓ Certificate & flag to display
- ✓ Grant funds for pumpouts
- ✓ Spill clean-up supplies
- ✓ Listed on DEP website
- ✓ Attract and keep customers
- ✓ Technical Assistance
- ✓ Compliance Assistance
 - Stormwater regulations
 - Wastewater regulations
 - Hazardous waste
 - Storage tanks



Designated Facilities Receive





Educational Signs



FUELING

When Fueling Remember Your Best Management Practices

Always monitor your fueling operation. Block spill access to water with buckets, absorbent pads and rings.

Clean up any spills immediately with absorbent materials.

Don't top off your tank - only fill to 90 percent.

Equip your vessel with fuel/air separators and whistling vents.

WARNING: It is illegal to discharge oil or hazardous substances into U.S. waters. (33 U.S.C. 1321 (b) (3)) You can incur a substantial civil penalty for each incident, regardless of the amount spilled.

www.floridadep.gov/fco/clean-marina

MARINA ENVIRONMENTAL POLICIES

Marina management encourages all vessel owners to follow the marina's environmental policies and best management practices provided below.

ENGINE & BILGES

- Use absorbent bilge pads to soak up oil and fuel.
- Dispose of oil, gasoline and diesel according to marina policies.
- Do not discharge bilge water if there is sheen in it.
- Do not dispose of any fuels, used oil or oil filters in marina waste containers.
- Contact management for the nearest recycling locations for authorized disposal containers.
- Dispose of used batteries according to marina policies.
- Do not dispose of batteries in marina waste containers.

PAINT, VARNISH & CHEMICALS

- Limit the amount of open solvents or paints on dock.
- Always mix paints and epoxy over tarp.
- Always use drip pan and drop cloth.
- Spray painting is not allowed within the marina.
- Purchase paint or chemicals only in quantities needed for a specific project.
- Do not dispose of paints or solvents in marina waste containers.
- Contact management for nearest recycling and disposal locations.
- Do not store fuels or solvents on docks or finger piers.

SURFACE PREPARATION

- Use biodegradable cleaners and teak cleaners.
- Use tarps to capture all scrapings, debris and drips.
- Stretch tarps between side of boat and dock when working over the water.
- Vacuum dust and debris every time you move the tarp or every hour.
- Reverse the boat in the slip to work on the far side.

SEWAGE

- **Never discharge untreated sewage directly overboard.**
- Store sewage in holding tanks and dispose of properly at the pumpout station.
- Ensure MSD Type I or Type II systems work properly and discharge only when underway.
- Do not discharge any sewage, even treated sewage, while moored in the marina.

SOLID WASTE DISPOSAL

- Recycle aluminum, plastic, paper and glass.
- Dispose of all garbage in proper shoreside receptacles.
- Let empty paint cans dry thoroughly before placing in waste containers.
- Do not throw fish remains overboard.

ALL HAZARDOUS WASTE MUST BE DISPOSED OF PROPERLY. CONTACT MARINA MANAGEMENT FOR MORE INFORMATION.

www.floridadep.gov/fco/clean-marina

BILGE CLEANING

PREVENT WATER POLLUTION BY KEEPING YOUR BILGES CLEAN

- Never drain engine oil into the bilge.
- Repair engine and tank leaks immediately.
- Disable automatic bilge pumps while completing repairs.
- Use bilge socks or other absorbent material to ensure all oil is removed from bilge before discharging.
- Always dispose of used oil at an approved waste reception facility.

You are responsible for any pollution from your vessel, including fines and cleanup costs.

www.floridadep.gov/fco/clean-marina



Environmental Spill Materials



Spill Kits



Bilge Socks



Containment Boom



Boater Education and Outreach Events

- We attend boat shows to educate the boating community.
- We conduct workshops to help the marinas.
- We attend and encourage the boating community to attend cleanup events to help collect and properly dispose of marine debris.
- We participate and publicize other environmental events such as National Estuaries Day and Florida Oceans Day.



Boater Outreach Materials



 **Clean Boating Pledge** 

As a participating member of the Florida Clean Boating Program, I pledge to do my part in keeping Florida's waterways clean. I will identify opportunities and implement practices to prevent pollution associated with my boating activities such as fueling, cleaning and washing, sewage management and boat maintenance. I will ensure that all passengers aboard my vessel follow the guidelines and maintain a clean boating environment.

As a Clean Boater I Pledge To:

- Dispose of recyclables at marked containers on land. Use a trash bag and keep Florida's waterways free of litter
- Practice proper fueling techniques
- Use pumpout facilities
- Support Florida Clean Marinas, Clean Boatyards and Clean Marine Retailers whenever possible
- Promote clean boating habits and the Clean Boating Program to fellow boaters
- Remember that a clean environment **always** starts with **me**

First Name: _____

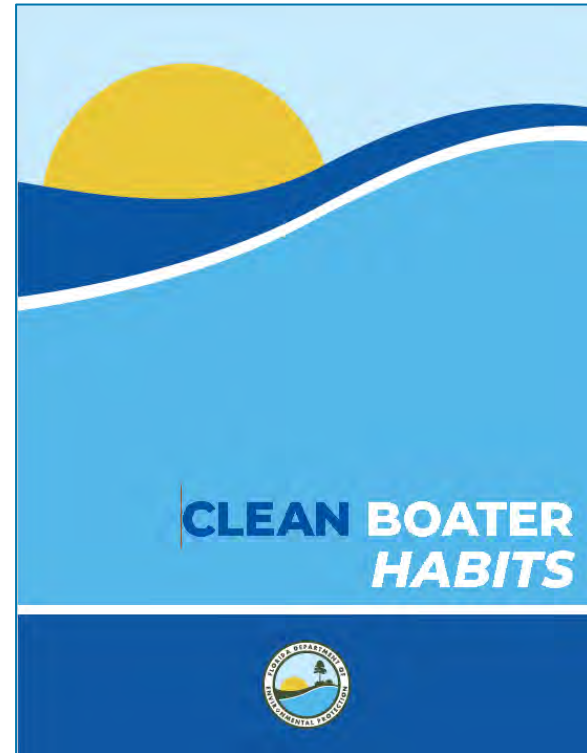
Last Name: _____


Street Address: _____

Email Address: _____

Signature

Date



 **KEEP FLORIDA'S WATER CLEAN
USE PUMPOUTS**

WHAT IS THE CLEAN VESSEL ACT?

The primary goal of the federal Clean Vessel Act (CVA) is to reduce sewage discharge from recreational boats that can foul water and seriously affect human and aquatic health. Congress passed the CVA in 1992 after determining there were too few onshore sewage disposal facilities to accommodate recreational boaters.

The CVA provides funds to states to construct, renovate, operate and maintain pumpout stations and pumpout boats. Since 1994, the Florida Department of Environmental Protection has awarded millions of dollars in CVA grants, creating more than 500 pumpout facilities throughout the state.

WHAT CAN I DO TO REDUCE SEWAGE DISCHARGE INTO WATERS?

- Use marina pumpout facilities and waste dump receptacles.
- Use onshore public restrooms and showers whenever possible.
- Make sure that waste does not go directly into the water.
- If you have a flow-through treatment system – Type I or Type II Marine Sanitation Device (MSD) – ensure it is working properly and that all waste goes through the system.
- Install a holding tank – Type III MSD – and pump it out at one of hundreds of pumpout stations available throughout the state.
- If you have a Type III MSD, make sure the Y-valve is securely connected to the holding tank so there is no discharge of raw sewage.
- Do not dispose of fats, solvents, oil, emulsifiers, disinfectants, paints, poisons, phosphates or diapers in your MSD.
- Use enzyme-based products in your holding tank instead of deodorizers and disinfectants, which can harm a aquatic life.
- Encourage marinas to provide convenient pumpout stations or pumpout vessels.

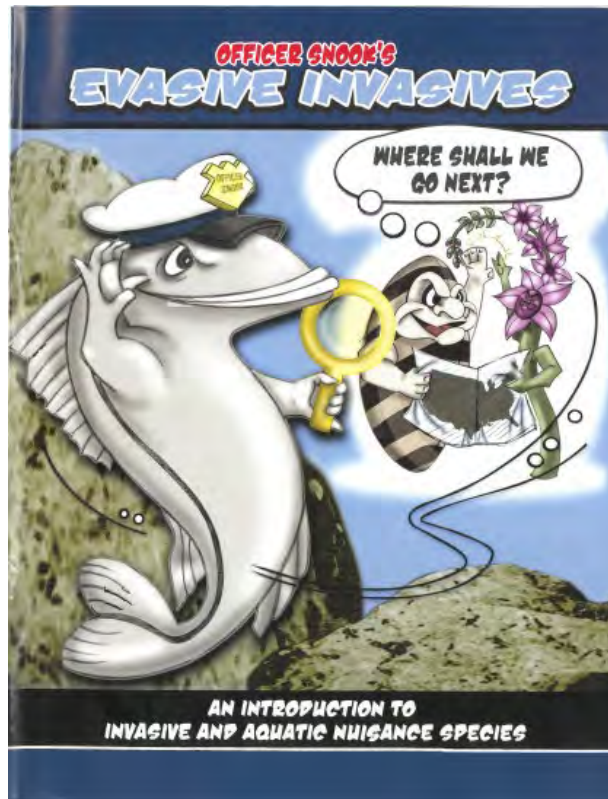
FloridaDEP.gov/CleanVessel



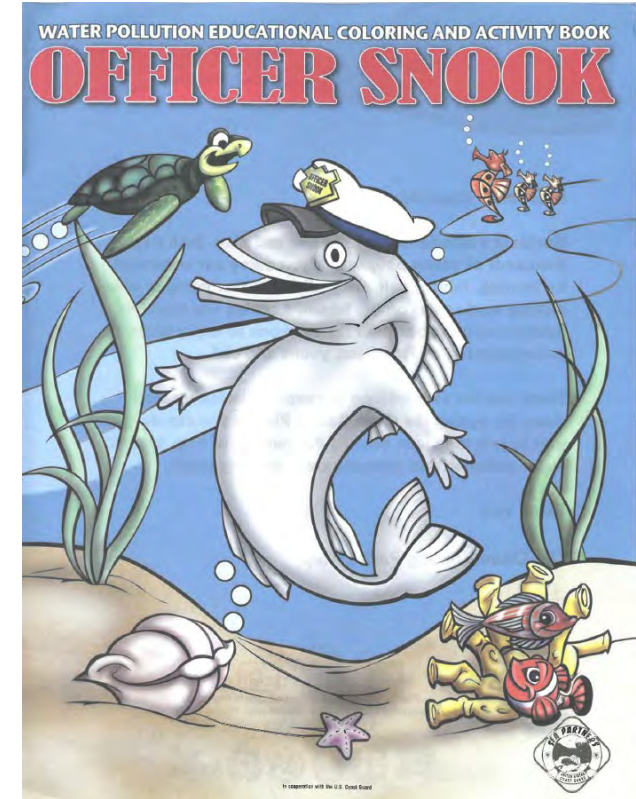
Educational Books for Youth



Future Boaters



Invasives



Water Pollution



Hamilton Harbor YC



Bluepoints Marina

Dorian Aerial & Architectural Photography



Clean Boating Programs Successes

- 325 Clean Marinas
- 48 Clean Boatyards
- 23 Clean Marine Retailers
- 27 Clean & Resilient Marinas
- 601 Pumpout Projects
- 38 million gallons sewage pumpout
- > 80,000 boater habits distributed





Our Partners

Partners help with:

- Outreach and education
- Mentoring marina staff
- Providing environmental clean-up materials
- Providing pumpout equipment
- Distributing educational publications
- Site visits for marina designations
- Technical assistance



Thank you!

Contact: Pamela Grainger

850-245-2846 or Pamela.Grainger@FloridaDEP.gov

floridadep.gov/rcp/clean-marina