

Epibiota methods

Quadrats (0.5m²) randomly placed along a shore parallel 100 m transect

Measured variables

- Percent cover of substrate

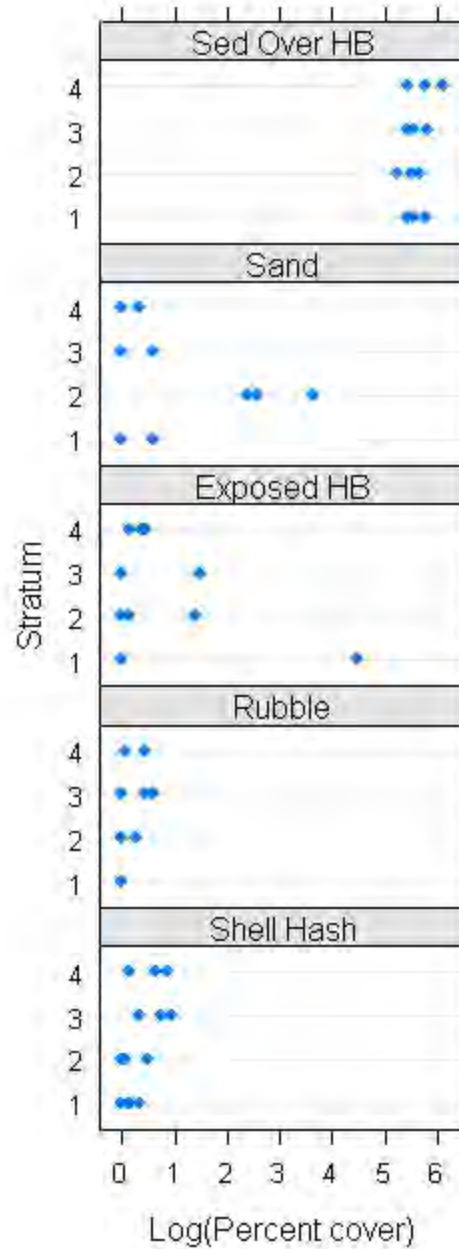
- Percent cover of epibiota (algae, sponges, bryozoa, stony corals)

- Estimate average and maximum size of dominant algae taxa

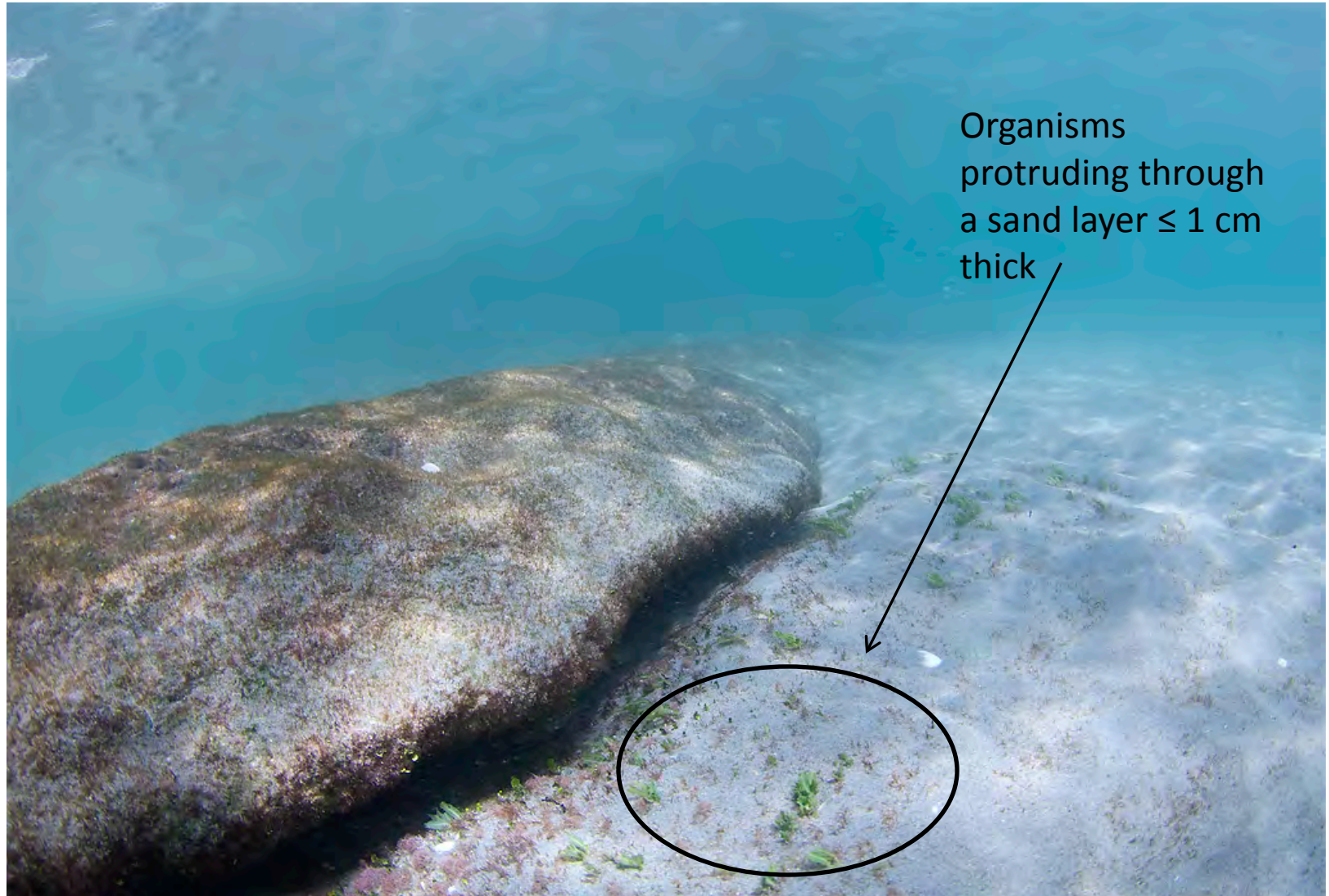
- Measure colony size of stony corals

- Measure height of octocoral colonies

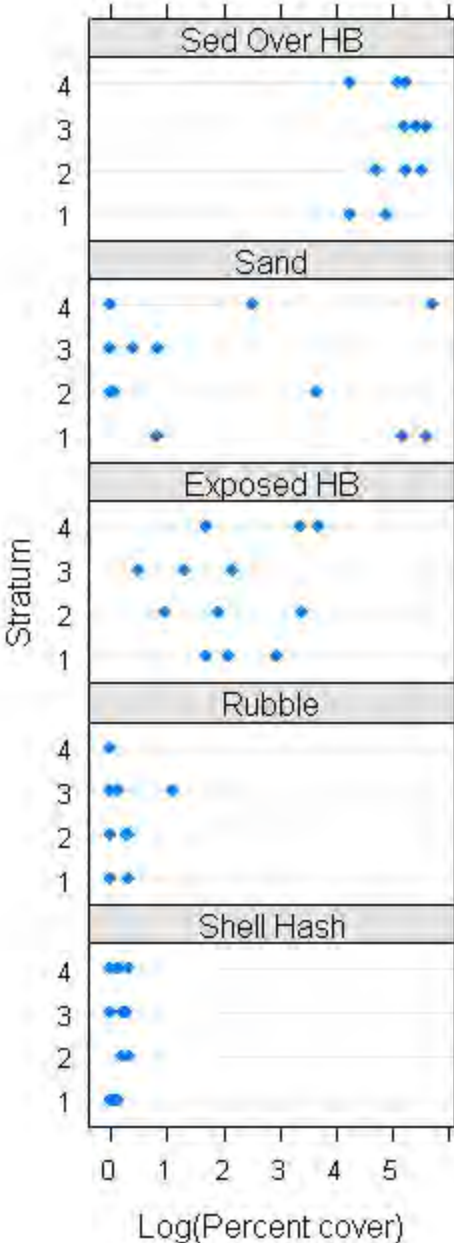
Summary of major substrate categories from quadrat sampling on natural hardbottom



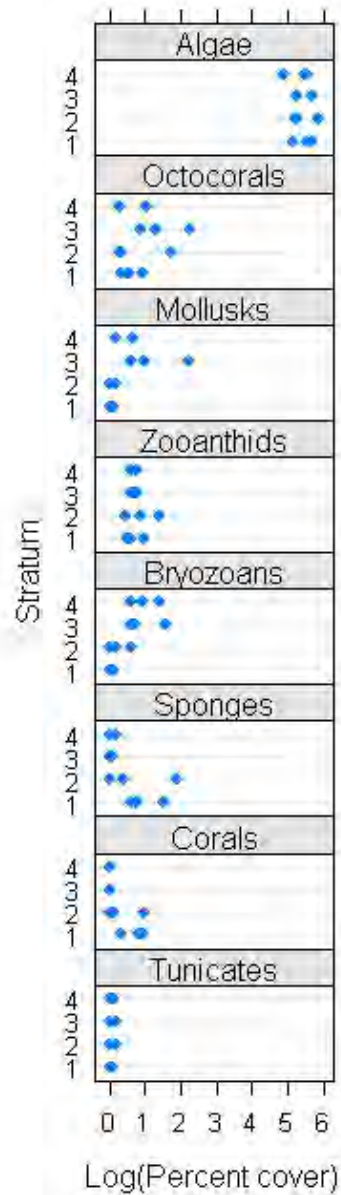
Example of sediment over hardbottom



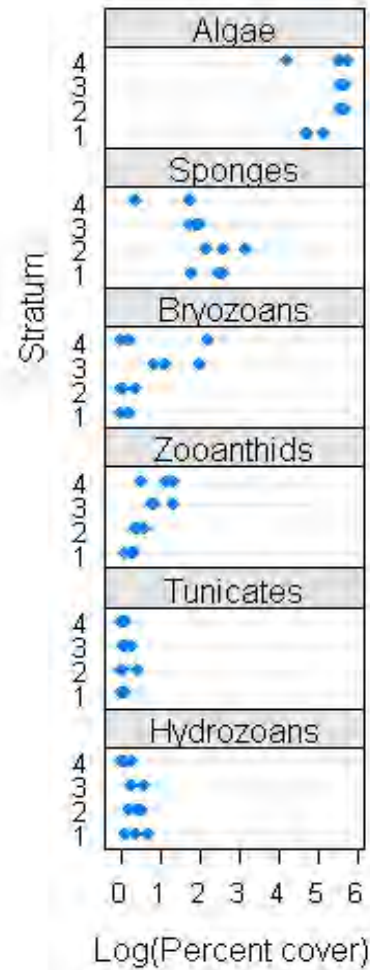
Summary of major substrate categories from quadrat sampling on artificial reefs



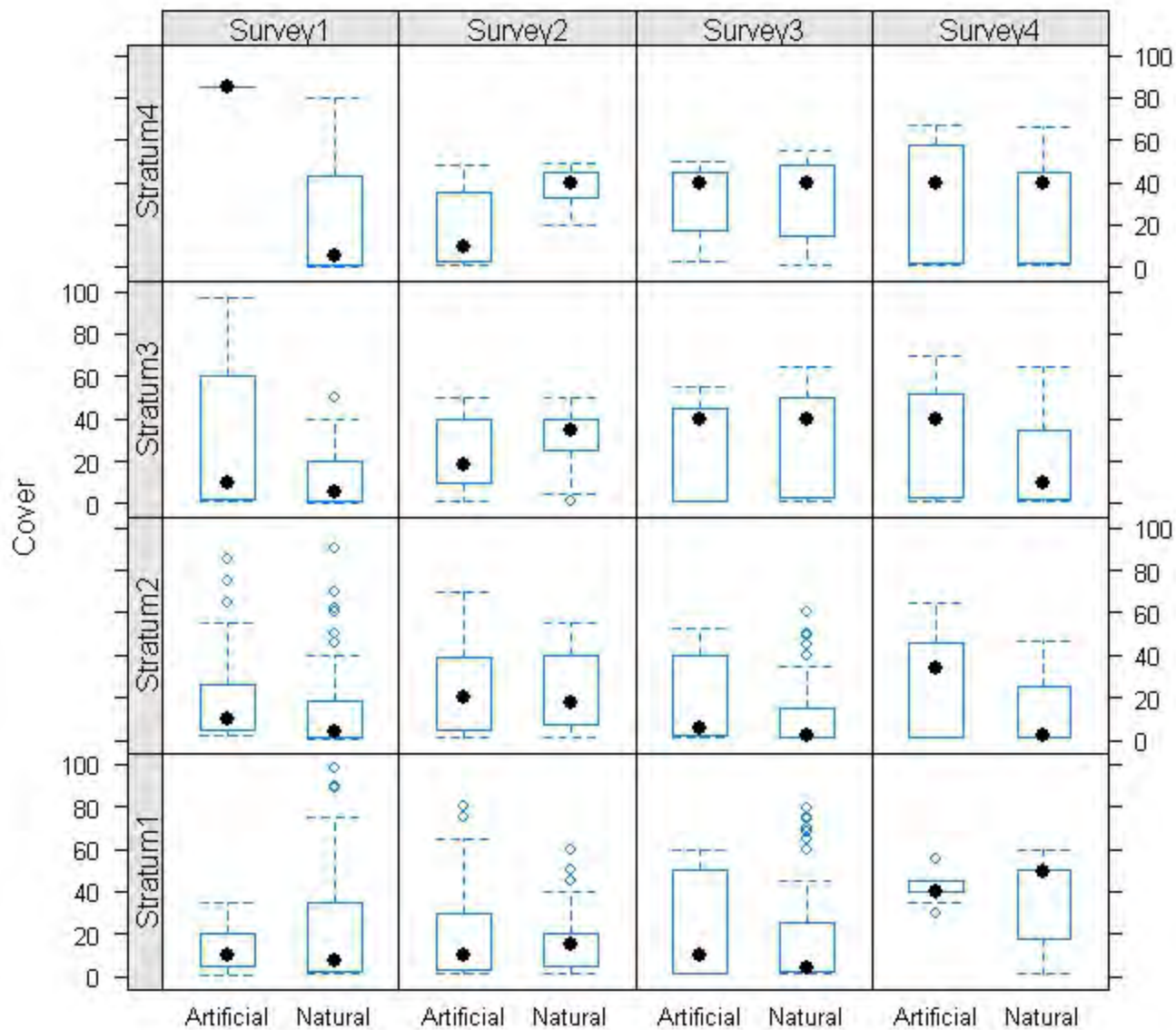
Summary of major taxonomic groups from quadrat sampling on natural hardbottom



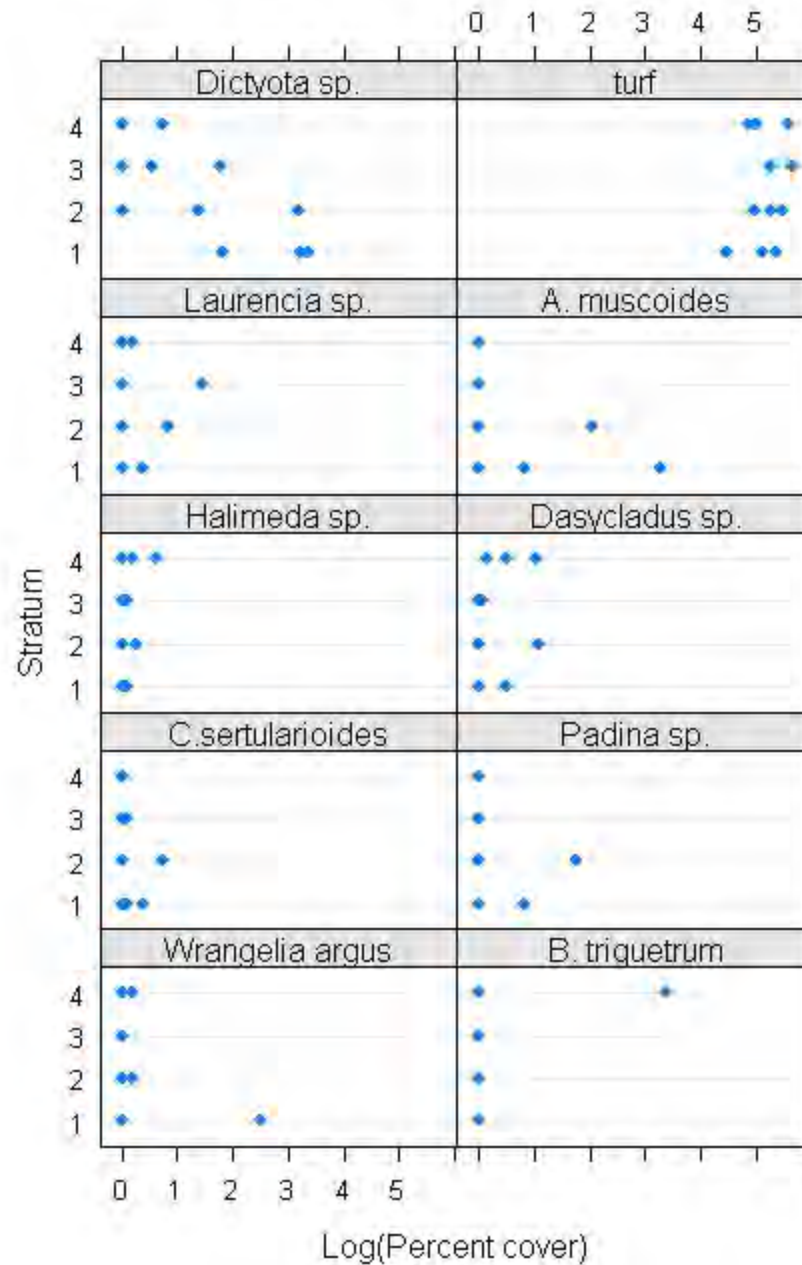
Summary of major taxonomic groups from quadrat sampling on artificial reefs



Comparison of percent algal cover between natural hardbottom and artificial reefs



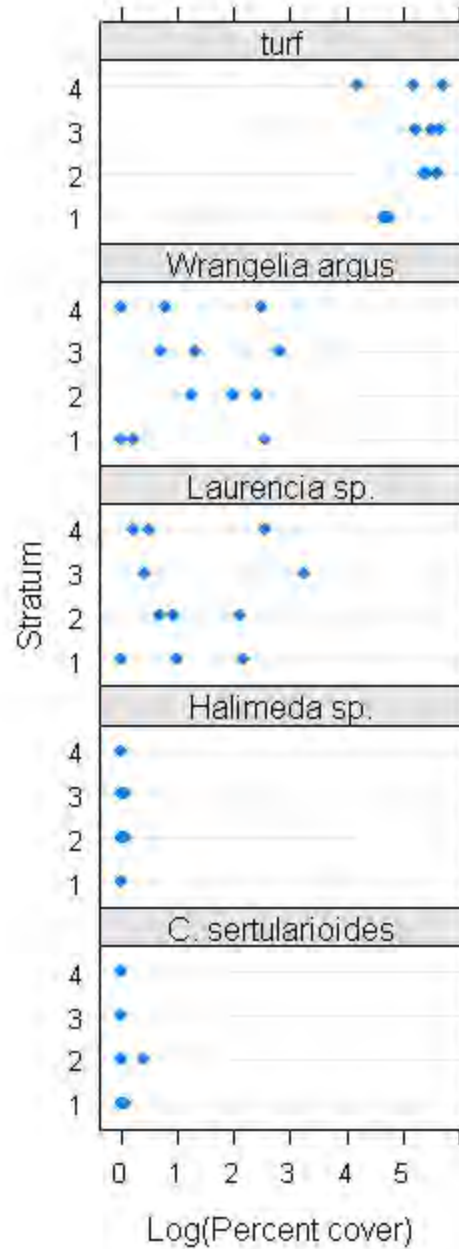
Percent cover by algal taxa on natural hardbottom



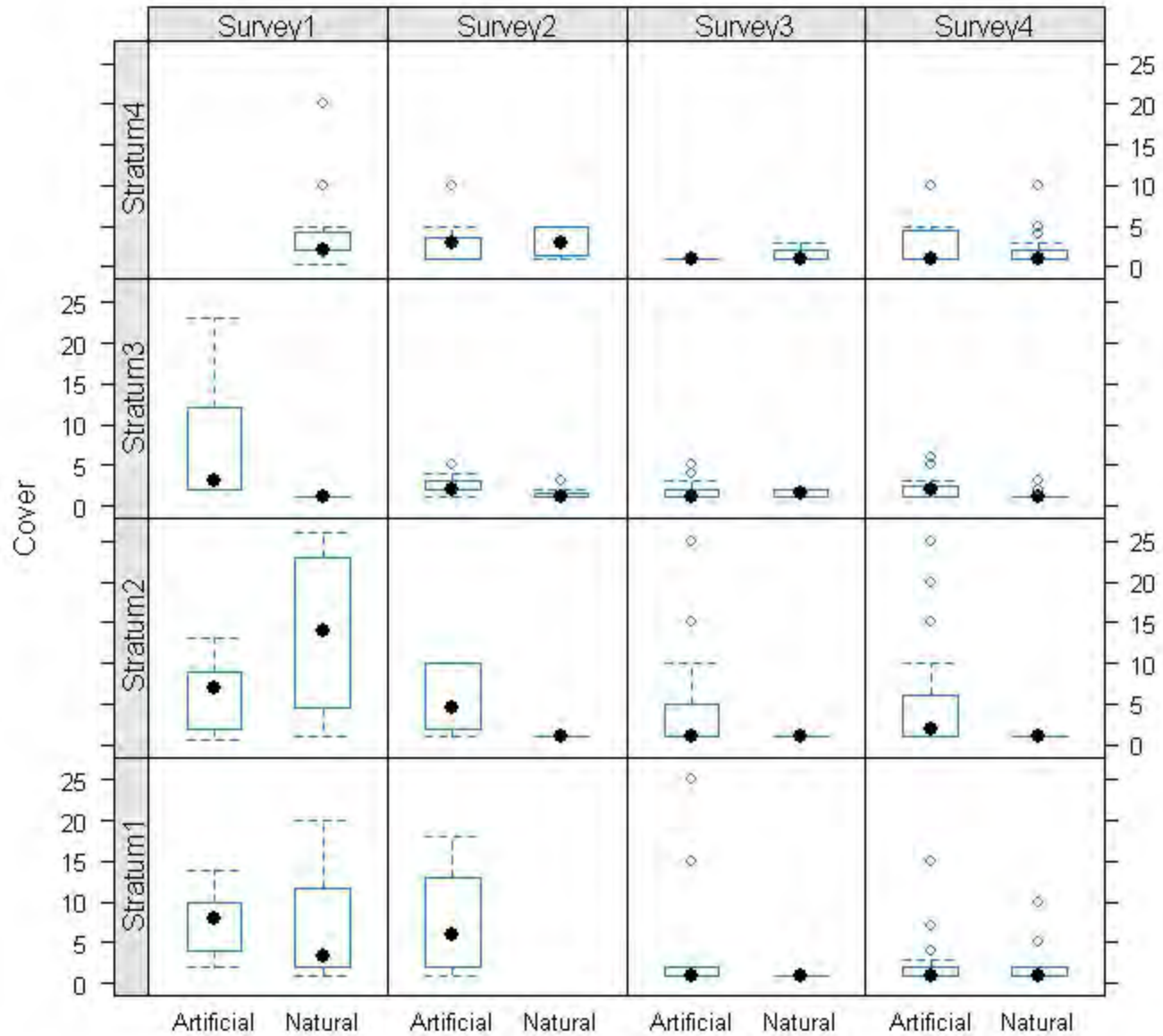
Brown algae (*Dictyota* sp.) on Stratum 1 off Palm Beach



Percent cover by algal taxa on artificial reefs



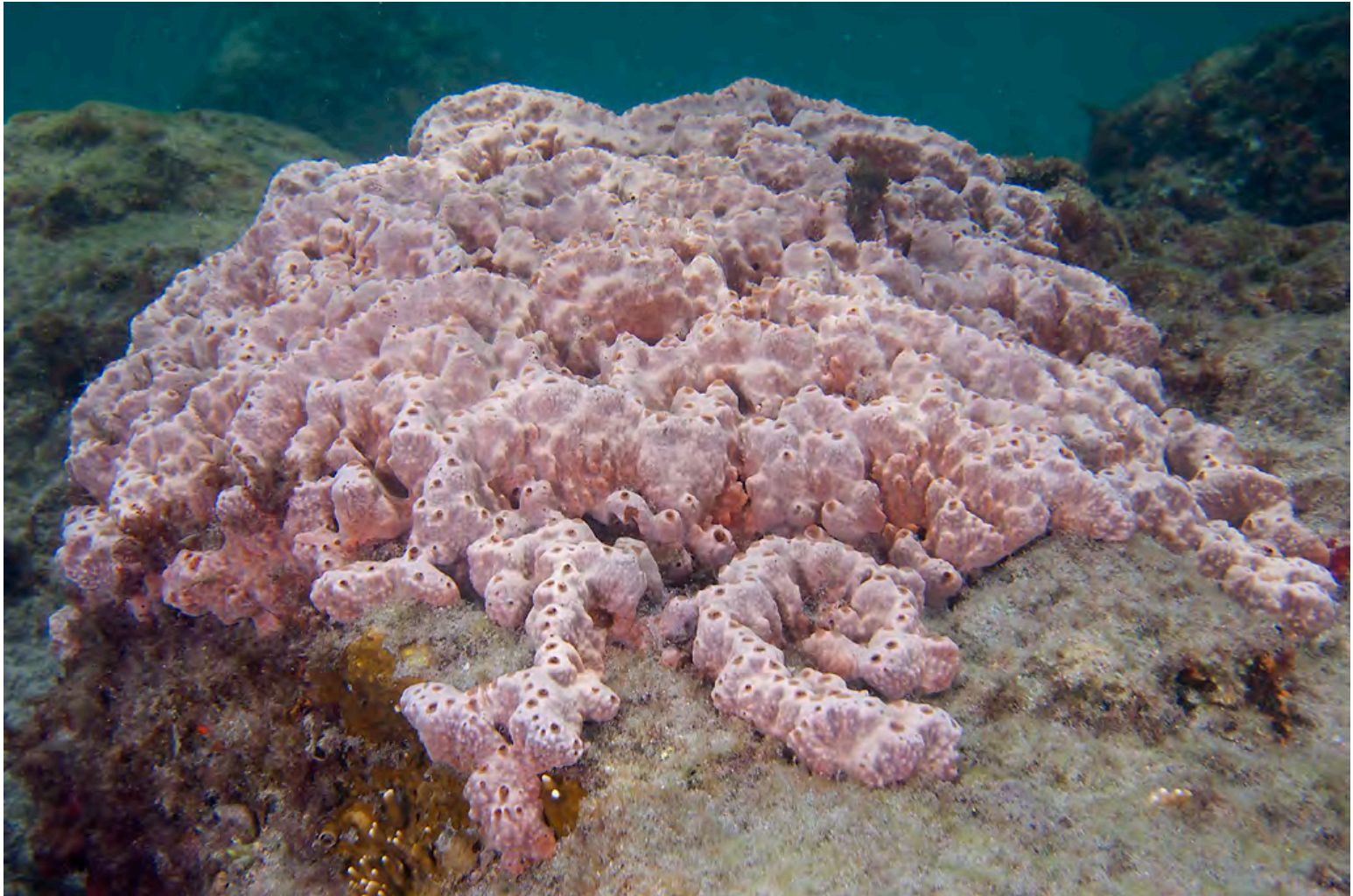
Comparison of percent cover by sponges between natural hardbottom and artificial reefs



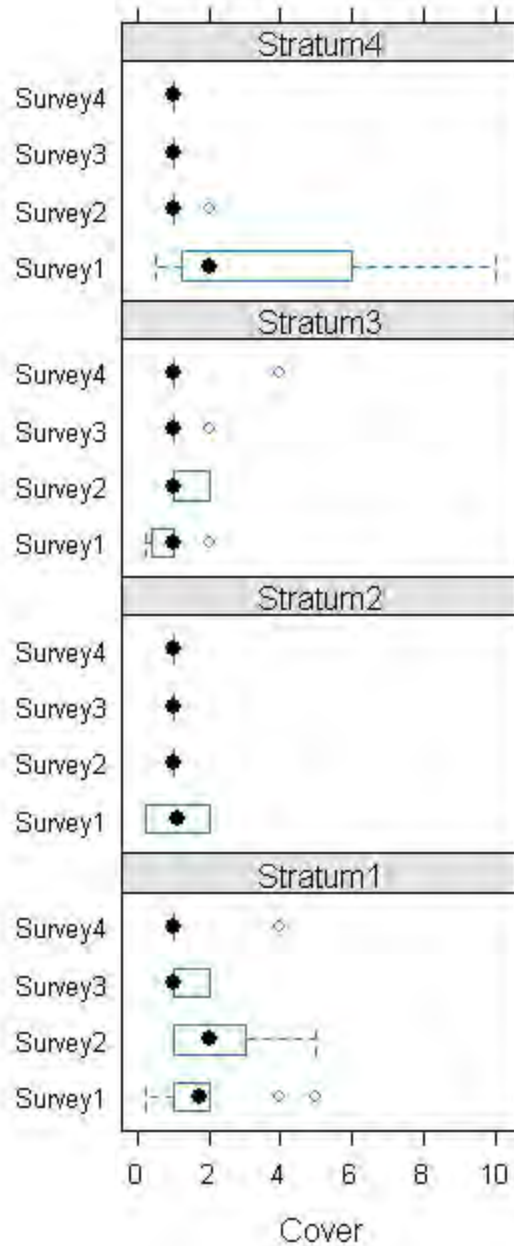
Encrusting sponge (*Pione lampa*) Stratum 2 Singer Island artificial



Sponge on artificial reef Stratum 3



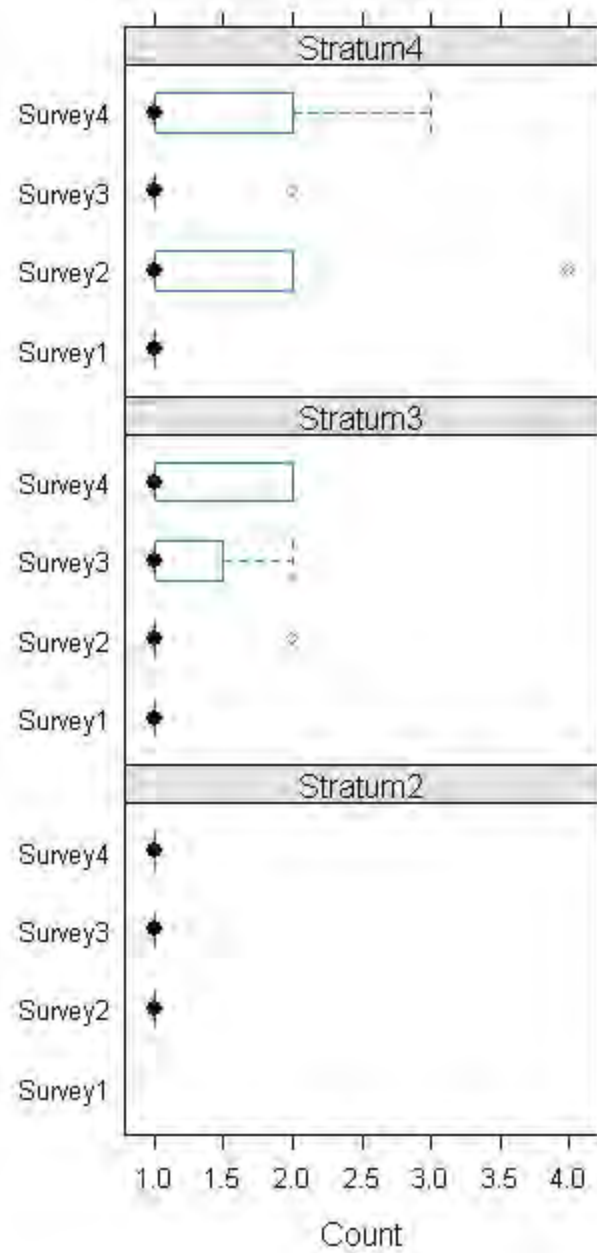
Percent cover of stony corals on natural hardbottom



Stony coral (*Siderastrea* sp.) on Stratum 1 off Palm Beach



Counts of octocorals on natural hardbottom



Octocoral (*Pseudoplexuara* sp.) Stratum 3 off Palm Beach

