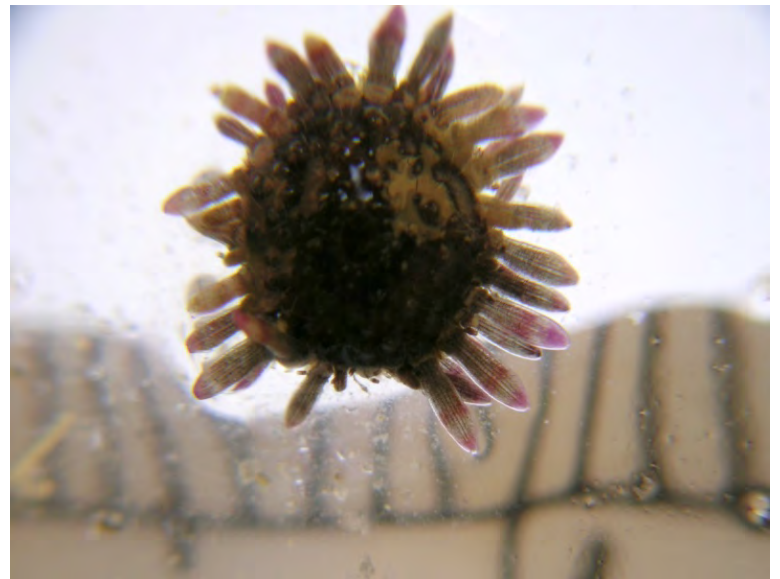
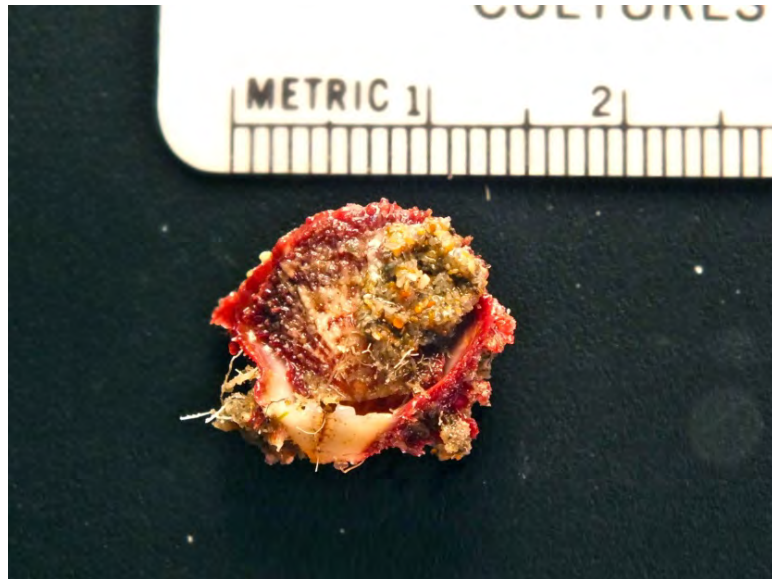
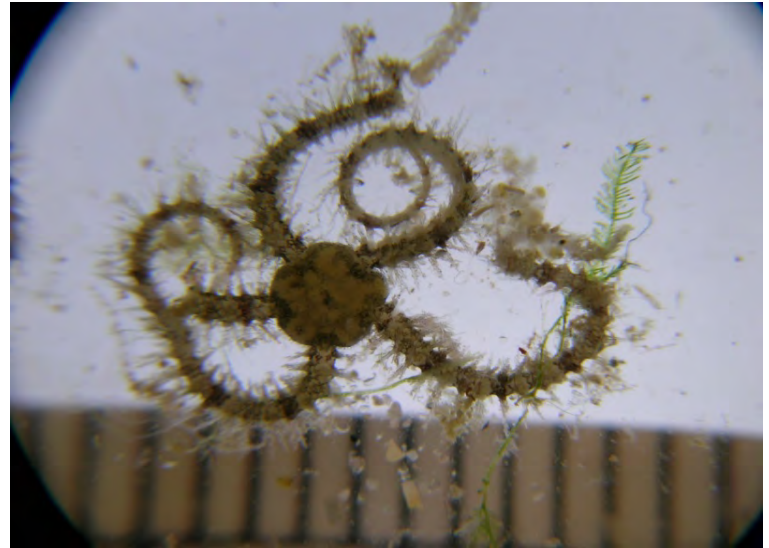


How does the number of species found within worm rock vary with depth and substrate type ?

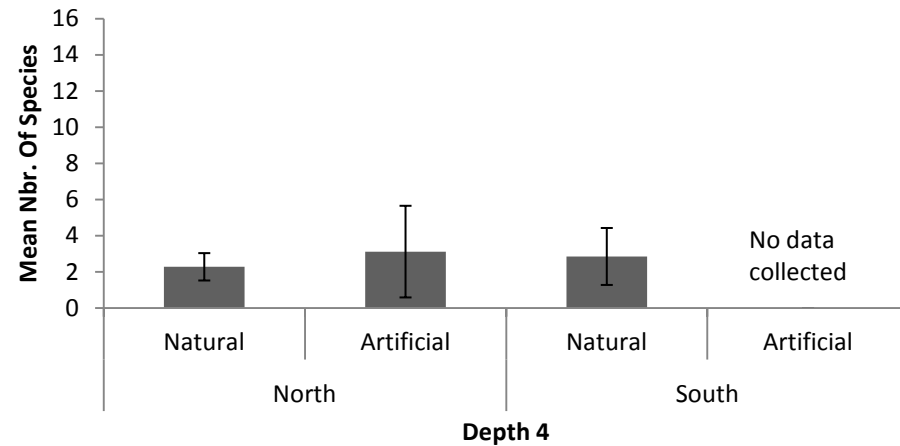
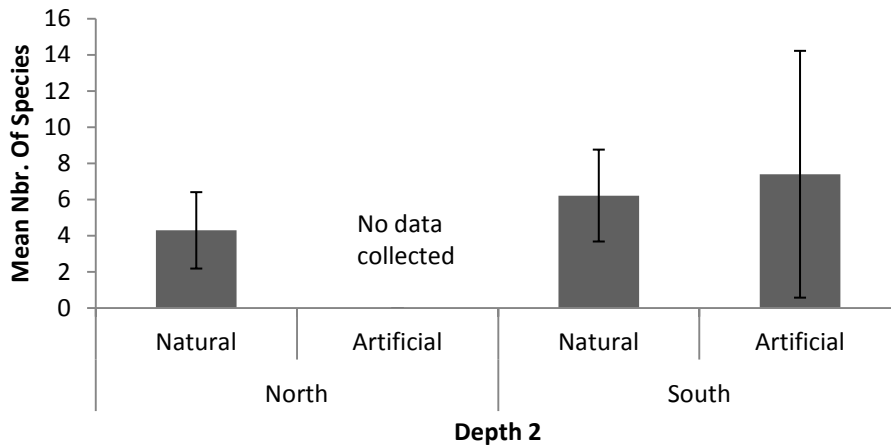
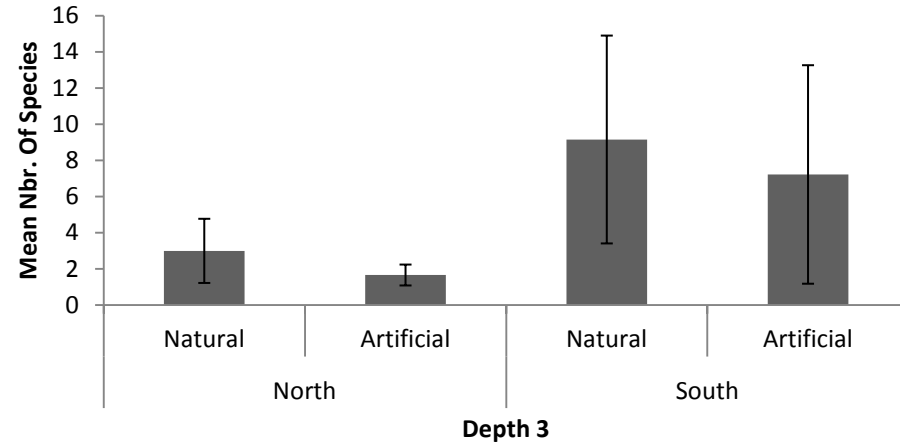
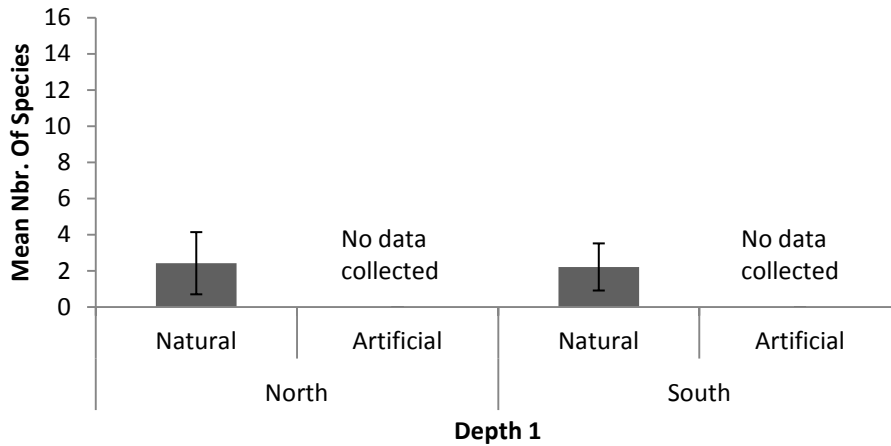






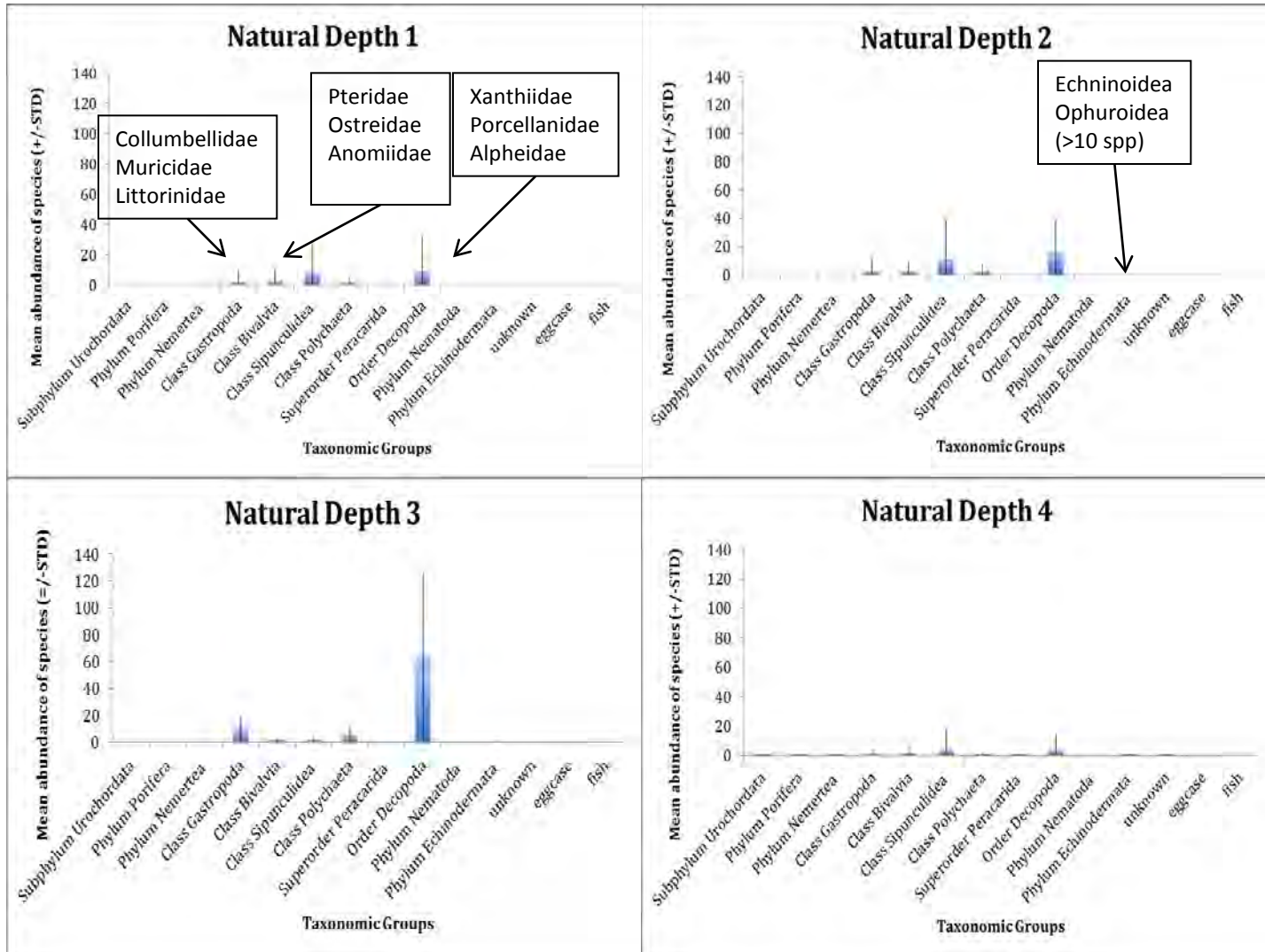
How does the number of species found within worm rock vary with depth and substrate type ?

2009



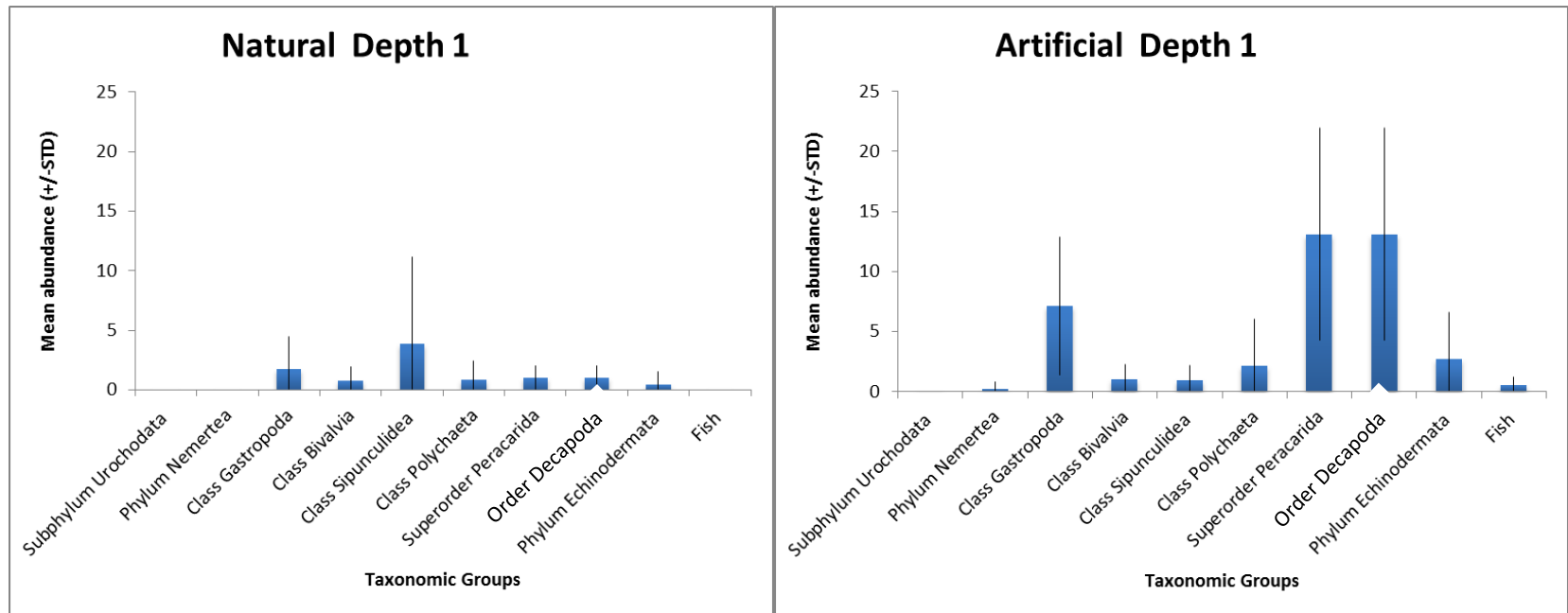
How does the composition of organisms found within worm rock vary with depth and substrate type ?

2009



How does the composition of organisms found within worm rock vary with depth or substrate type ?

Winter 2012

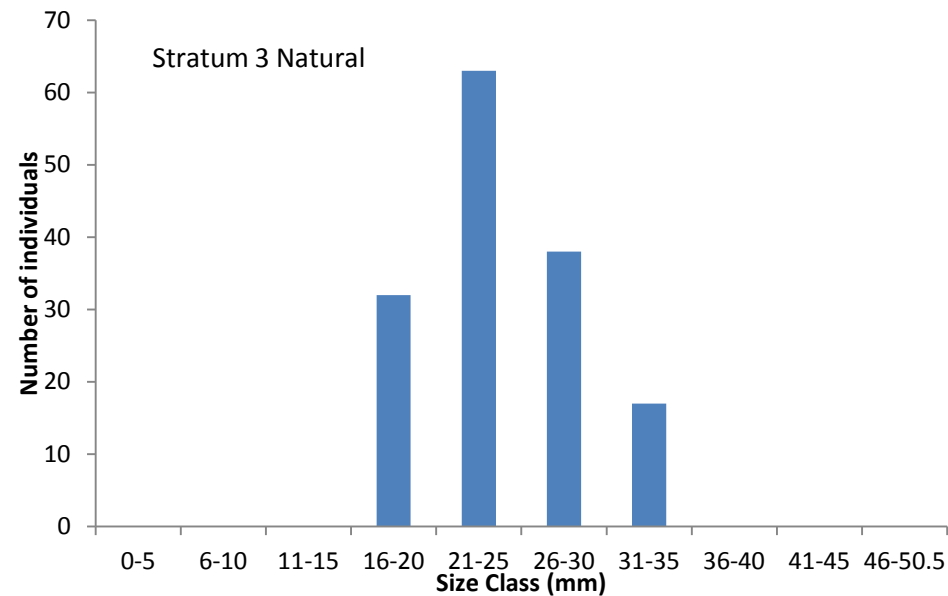
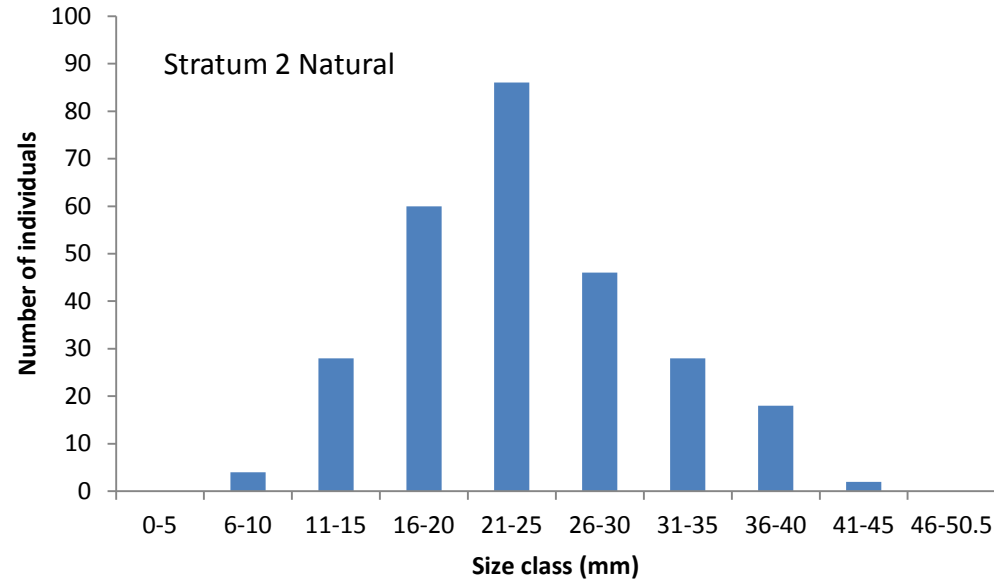


How do populations of *P. lapidosa* vary along the Florida east coast ?



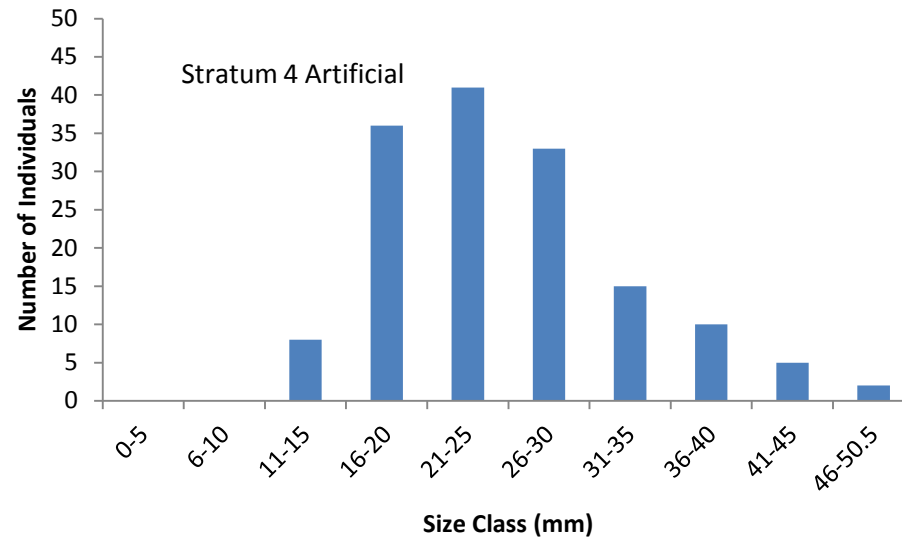
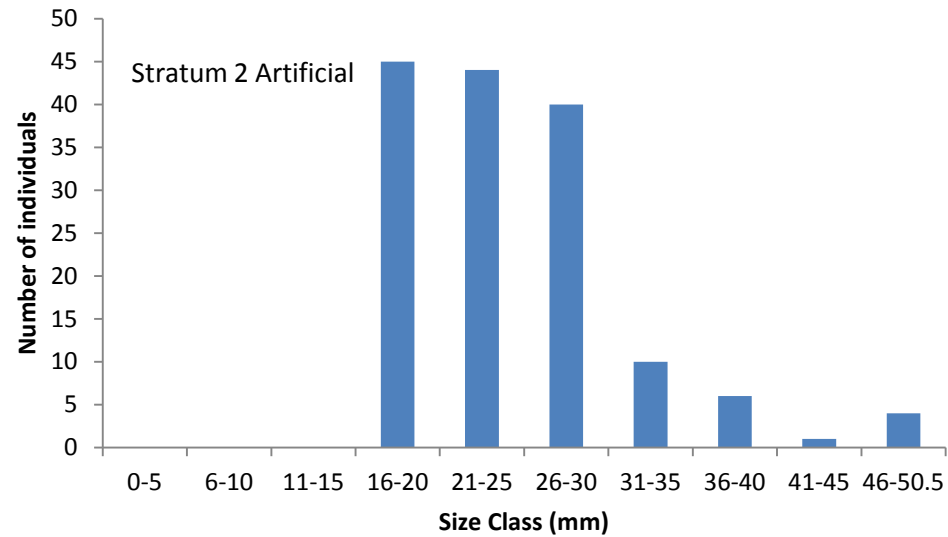
Does *P. lapidosa* size distribution vary with depth or substrate type ?

2009



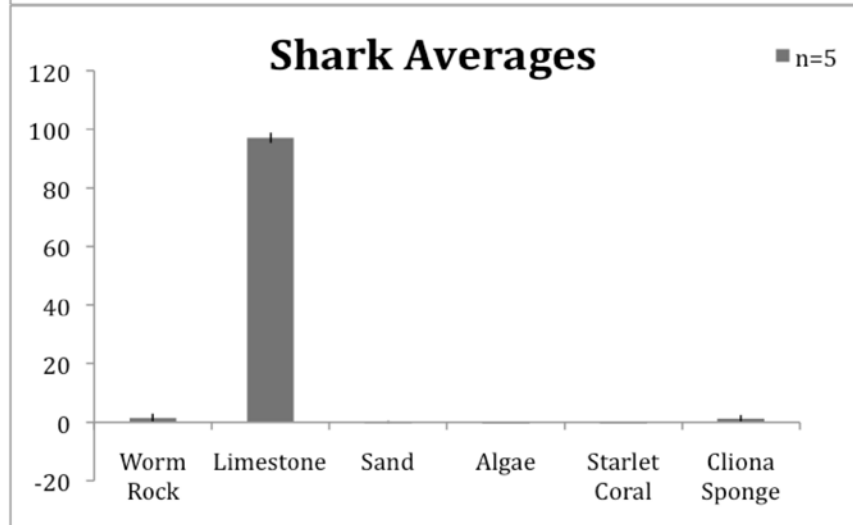
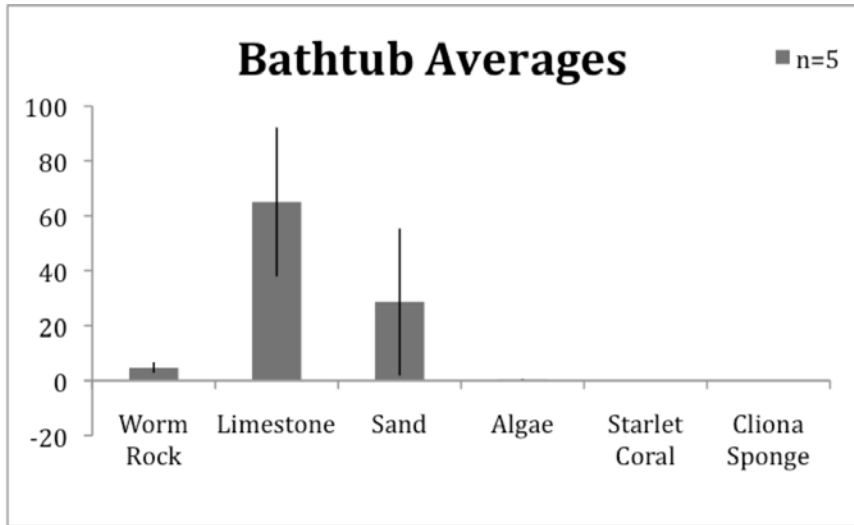
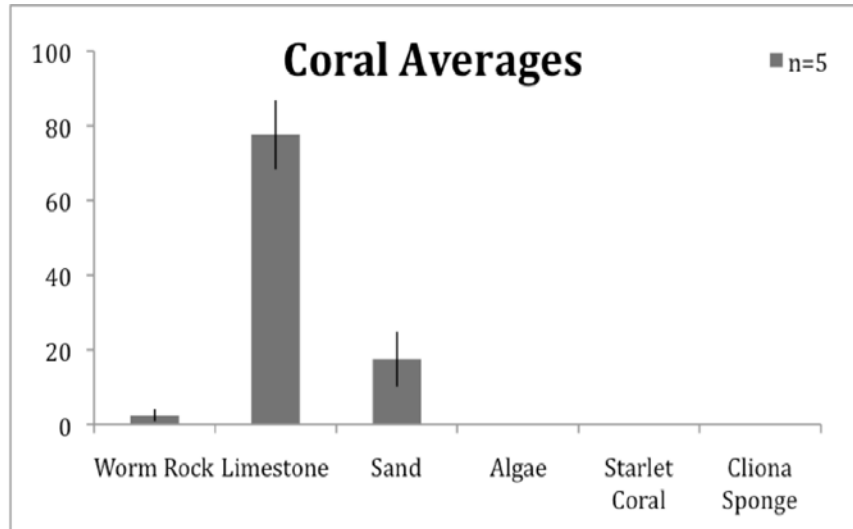
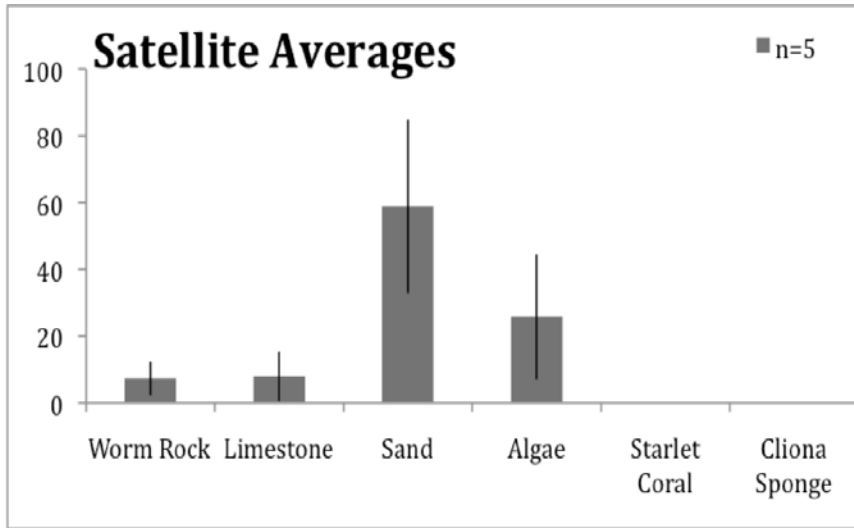
Does *P. lapidosa* size distribution vary with depth or substrate type ?

2009



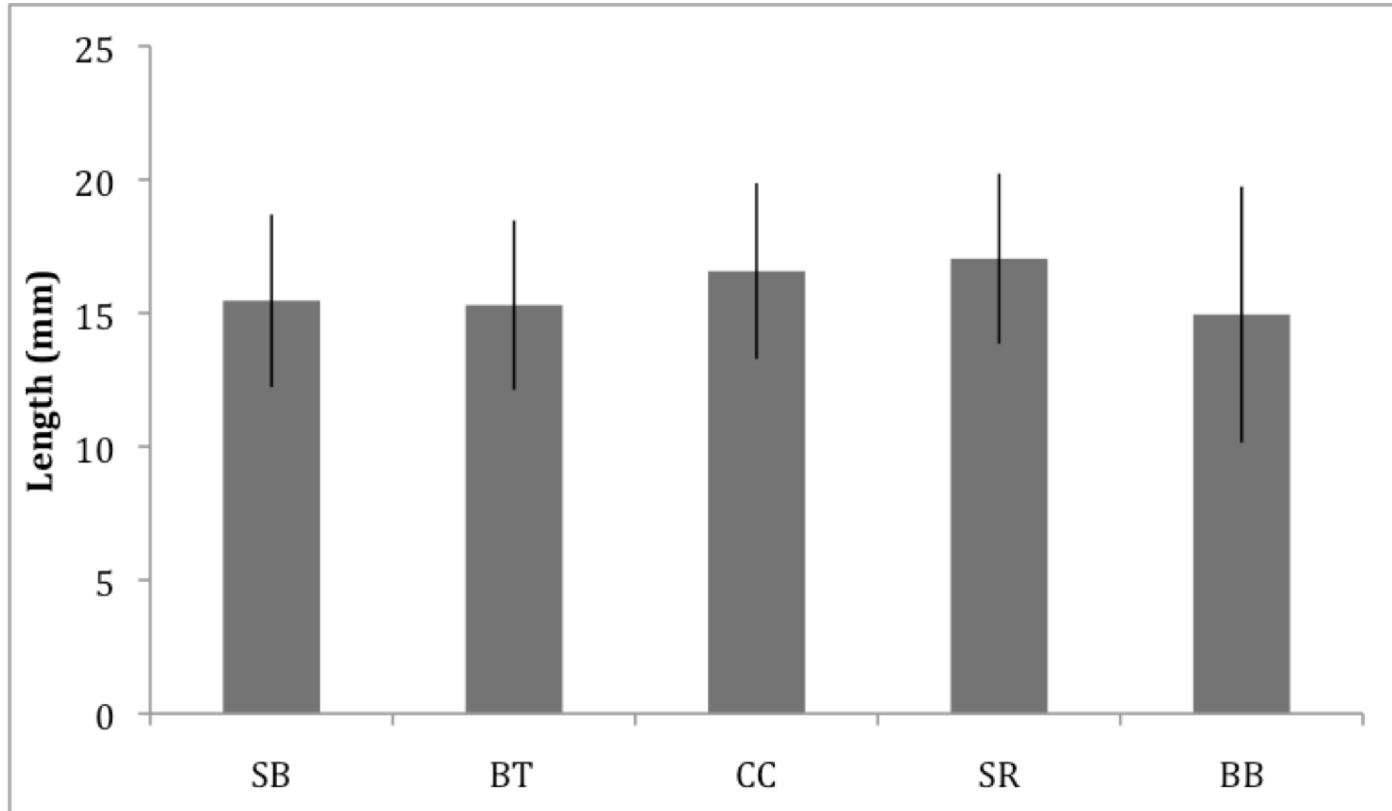
How do populations of *P. lapidosa* vary along the Florida east coast ?

Percent cover



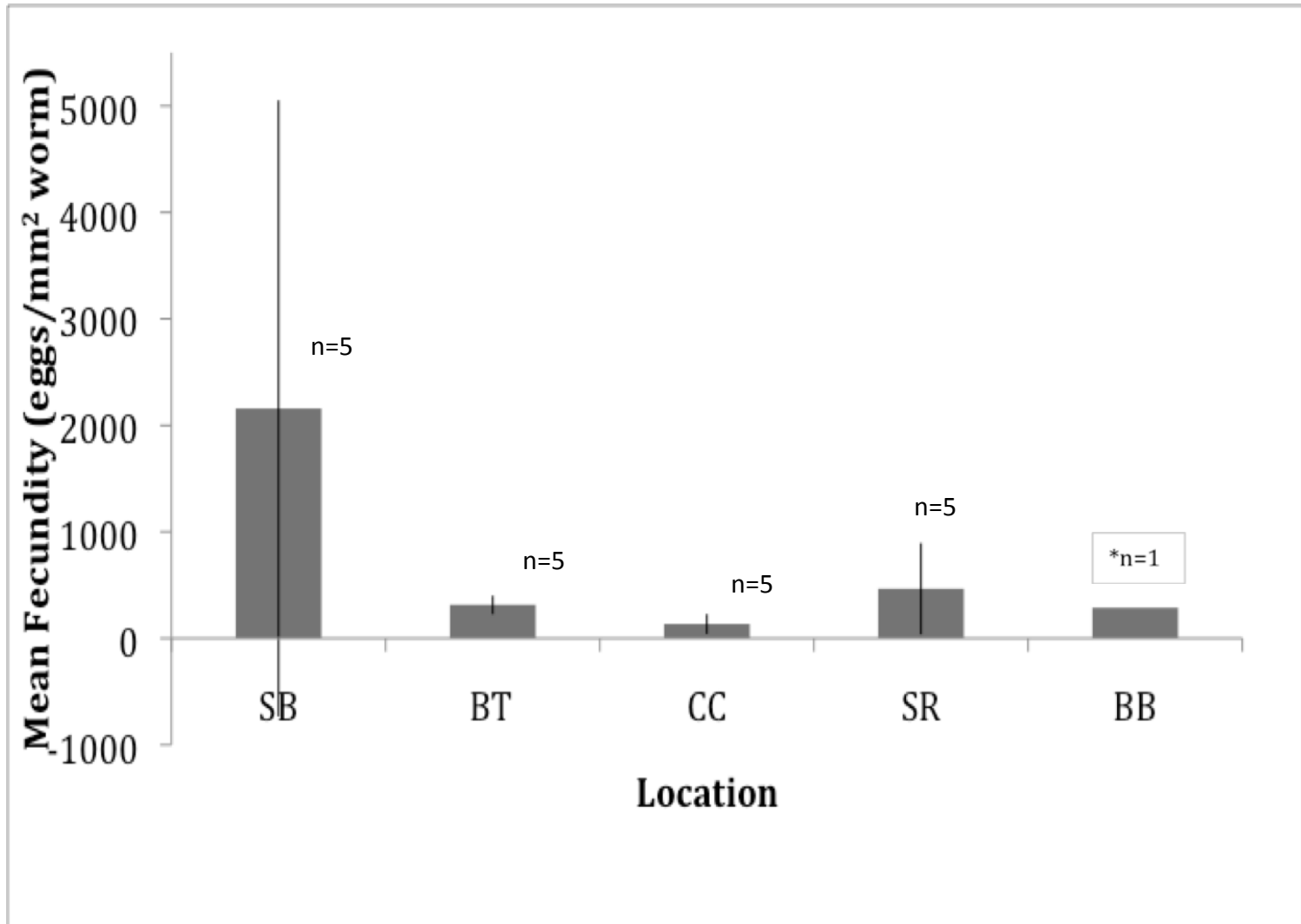
How does *P. lapidosa* size vary along the Florida east coast ?

Length



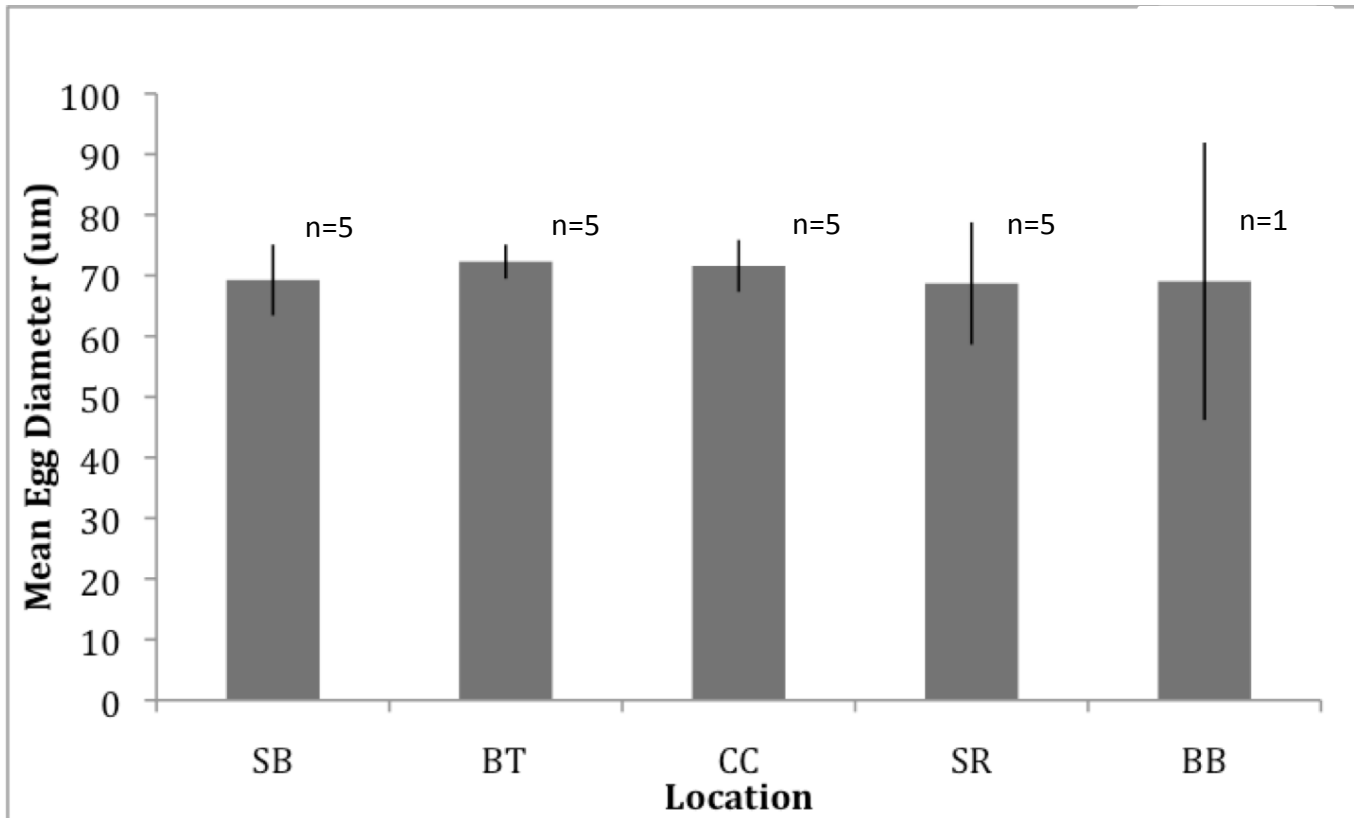
How do populations of *P. lapidosa* vary along the Florida east coast ?

Fecundity



How do populations of *P. lapidosa* vary along the Florida east coast ?

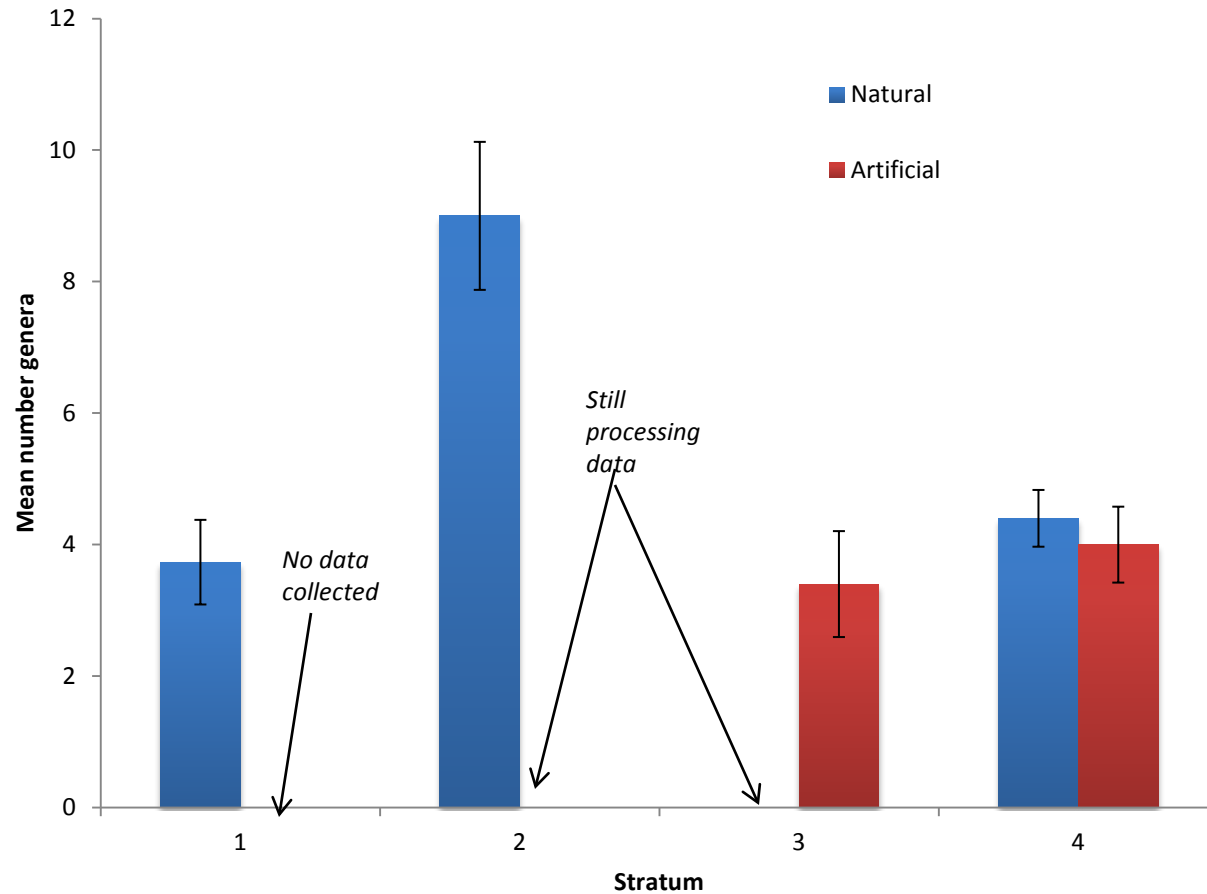
Egg size



Molecular & density comparisons

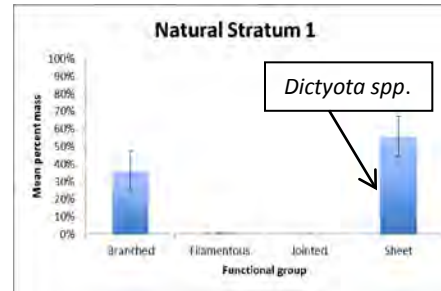
How does the number of macroalgal species vary with depth or substrate type ?

2009



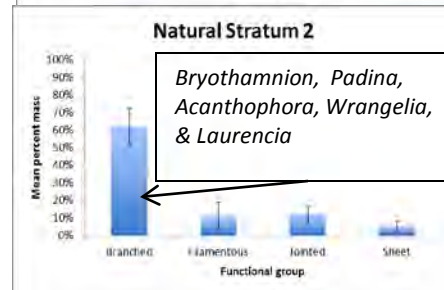
How does macroalgal functional group vary with depth or substrate type ?

2009



Artificial Stratum 1

No data collected for this depth



Artificial Stratum 2

Still identifying and processing weights

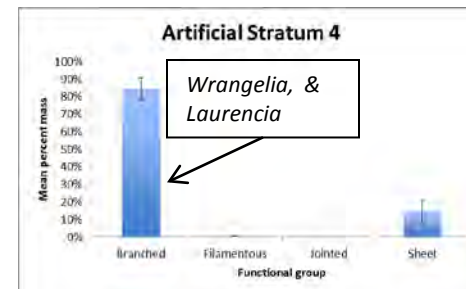
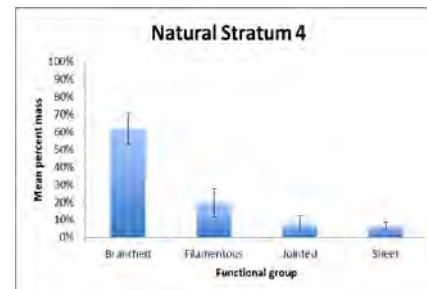


Natural Stratum 3

Still identifying and processing weights

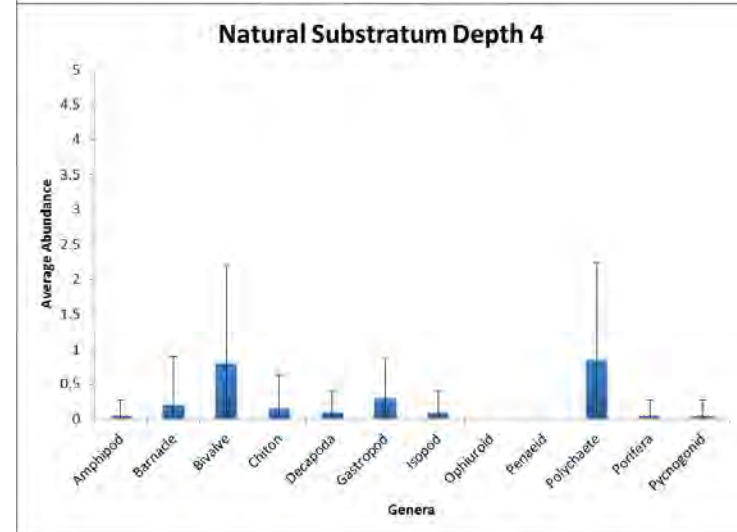
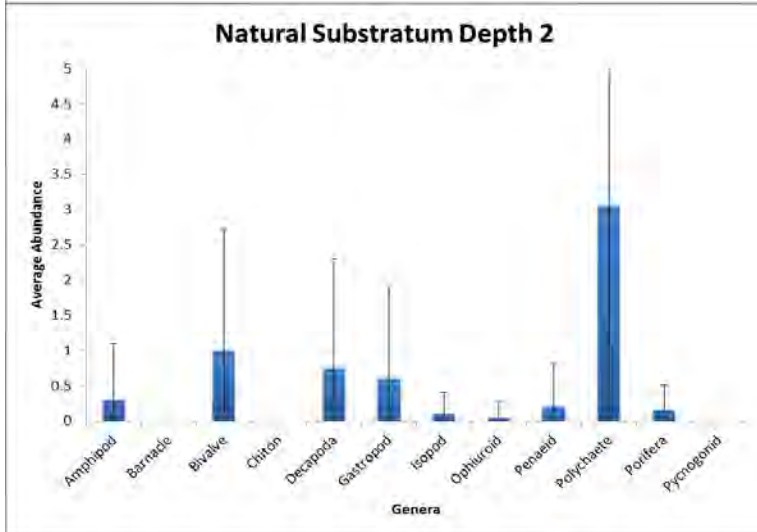
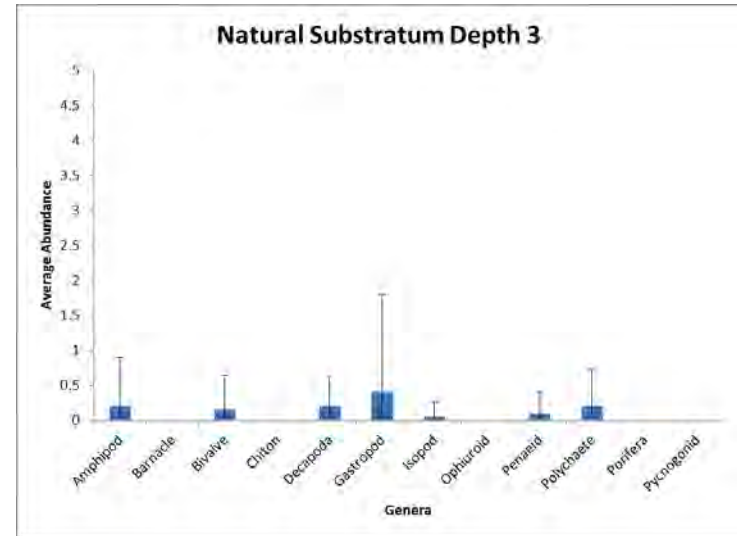
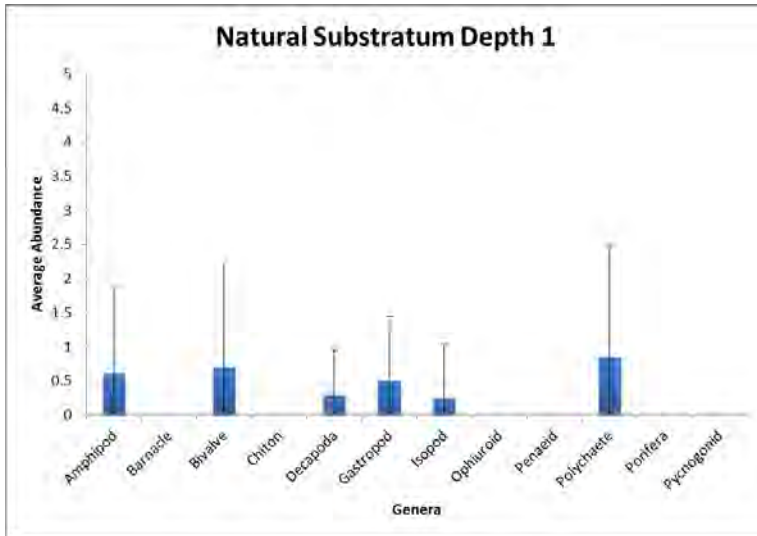
Artificial Stratum 3

Algae identified but need to process weights



How does the composition of organisms found within algae vary with depth and substrate type ?

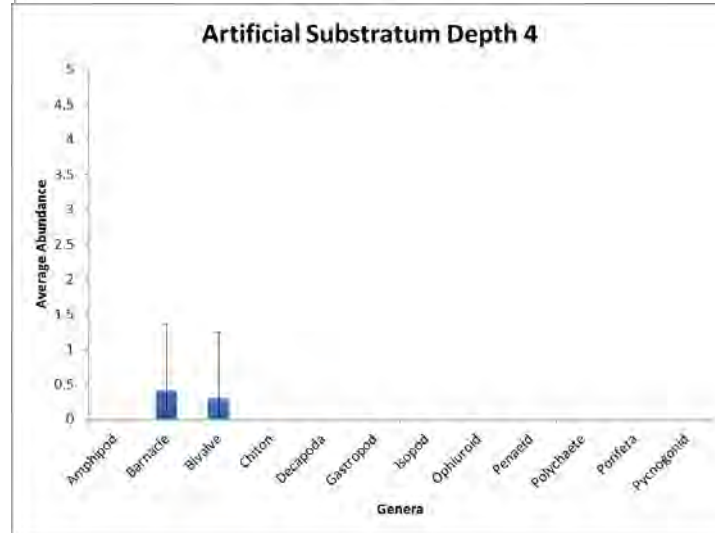
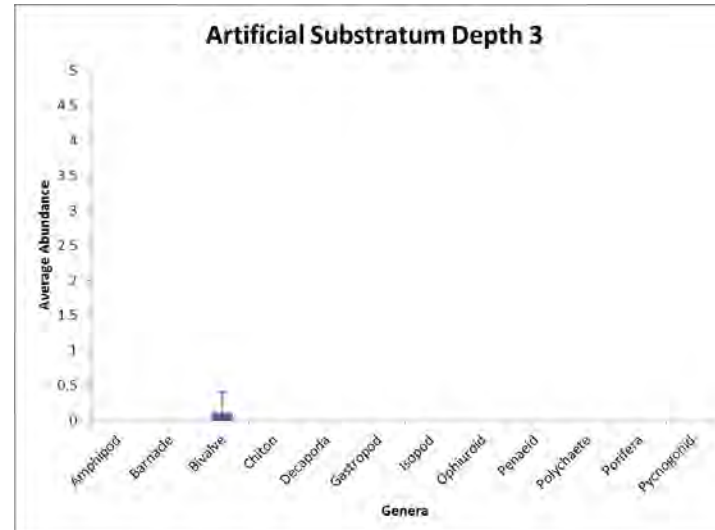
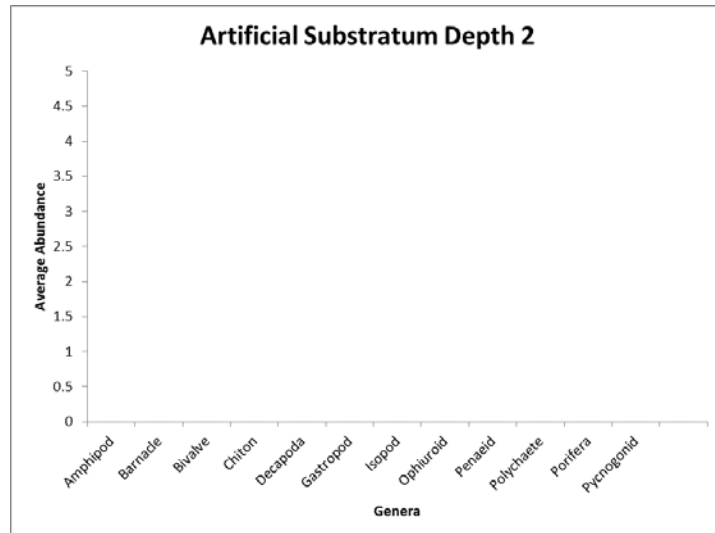
2009



How does the composition of organisms found within algae vary with depth and substrate type ?

2009

No data collected for intertidal depths



A number of opercula ? encountered in these samples.....

