

Annual Land Management Review Team Report

**Florida Department of Environmental Protection
Division of State Lands
Office of Environmental Services**

Fiscal Year 2020-21



Table of Contents

Introduction..... 3

Acronyms 6

Management Planning 7

Conservation Lands Management Planning 8

Management Implementation 9

Conservation Lands Management Implementation 10

Cumulative Acreage Reviewed..... 11

Effect of Management..... 12

Overview of LMR site locations..... 13

Weedon Island Preserve..... 14

Hillsborough River State Park 19

Werner-Boyce Salt Springs State Park 23

Topsail Hill Preserve State Park 26

Point Washington State Forest..... 30

Grayton Beach State Park 33

Etoniah Creek State Forest..... 36

Welaka State Forest 39

Lover’s Key State Park 42

Okaloacoochee Slough State Forest..... 46

John Pennekamp Coral Reef State Park..... 49

Lignumvitae Key Botanical State Park..... 52

Dagny Johnson Key Largo Hammock State Park..... 56

Bald Point State Park 60

Alfred B. Maclay Gardens State Park..... 63

Apalachicola River Wildlife and Environmental Area..... 66

Dr. Julian G. Bruce St. George Island State Park 69

Payne’s Prairie Preserve State Park 72

Watermelon Pond Wildlife and Environmental Area..... 76

Appendix A. Scoring System Detail..... 79

Introduction

**INTRODUCTION TO LAND MANAGEMENT REVIEW
TEAM REPORTS AND ANALYSES:
REVIEWS CONDUCTED DURING FISCAL YEAR 2020-21**

Section 259.036, Florida Statutes (F.S.), requires the Board of Trustees, acting through the Department of Environmental Protection (DEP), to conduct land management reviews of selected conservation, preservation and recreation lands titled in the Board of Trustees (BOT). The team assesses whether those lands are being managed for the purposes for which they were acquired, and whether they are being managed in accordance with their adopted management plans.

The 2003 Florida Legislature amended section 259.036, F.S., to require that all conservation lands greater than 1,000 acres in size be reviewed at least every five years. The properties reviewed were selected from a database of the BOT lands based on the following factors: size of the property; plan due dates; managing agency; previous land management review date; and geographic location.

Regional review team members were selected in accordance with the requirements of the legislation, to include representatives of the following: (1) county or local community in which the parcel is located, (2) Division of Recreation and Parks (DRP), (3) Florida Forest Service (FFS), (4) Florida Fish and Wildlife Conservation Commission (FWC), (5) the DEP regulatory district office, (6) private land manager, (7) local Soil and Water Conservation District board of supervisors or water management district, and (8) a conservation organization.

Participating state agencies, soil and water conservation districts, local governments, and conservation groups have had continual input into the development and ongoing evolution of the review process. The Division of State Lands (DSL) staff is engaged in a continual process of developing new, more objective methodology for reviewing conservation lands and management plans, and more effective measures to provide uniform accountability. Additionally, DEP coordinates with representatives of the Water Management Districts (WMD) to integrate land management reviews where WMD lands are adjacent to BOT lands, and when the BOT has joint ownership of parcels with a WMD.

Thirty-five reviews were originally scheduled, but consistent with precautionary guidance provided by the Center for Disease Control and Prevention, Governor DeSantis and the Florida Department of Health regarding COVID-19, DEP postponed 16 land management reviews scheduled from July through October 2020. Nineteen reviews were conducted during Fiscal Year 2020-21, involving more than 245,000 acres of managed lands. Reports of the review team findings were provided to the managing agency and ARC. The reports are also available on the DSL website. The management activities are scored on a range of one to five. Applying the criteria that a score of 3.5

and up is considered excellent, a score of 2.5 to 3.49 is considered adequate, and a score of less than 2.5 is considered inadequate, the management review team provides the following:

- **Public access:** Public access was excellent on 18 (94.7 percent) of the sites the teams visited, and adequate on one (5.3 percent) of the sites.
- **Prescribed fire scope:** Prescribed burning is considered an appropriate management tool on 14 of the 19 sites reviewed. On one site (5.3 percent of sites), over 30 percent of the fire dependent lands had been treated according to prescription. On 12 sites (63.2 percent) over 60 percent of the fire dependent lands had been treated according to prescription. On one site (5.3 percent) less than 30 percent of the fire dependent lands had been treated according to prescription. Five sites (26.3 percent) have no fire dependent lands.
- **Prescribed fire frequency:** On 13 of the 14 sites requiring prescribed fire (68.4 percent), the teams found the burn frequency adequate or excellent. On one site (5.3 percent) the teams found the burn frequency to be inadequate.
- **Fire quality:** On 13 of the 14 sites where prescribed fire has been implemented (68.4 percent) the teams found fire quality to be excellent. On one site (5.3 percent) the teams found fire quality to be inadequate.
- **Invasive species control:** Control of non-native invasive plants was a management issue on all the lands reviewed. Control and maintenance measures were excellent on 14 (73.7 percent) of the sites reviewed.
- **Surface water quality:** Lands that have significant hydrological resources should be monitored to ensure protection. Thirteen sites (68.4 percent) had plans that adequately covered testing for degradation of surface waters. Six sites had no surface water testing needs.
- **Groundwater quality:** Seven sites (36.8 percent) had adequate monitoring for groundwater quality and quantity. Twelve sites had no groundwater monitoring needs.
- **Species protection:** Nineteen sites (100 percent) were found to be excellent in actual management practices to protect listed plants and animals on site. The plans were deemed adequate or excellent to ensure protection on 19 sites (100 percent).
- **Law enforcement:** On 18 sites (94.7 percent), law enforcement was adequate or excellent to protect the resources, and one site (5.3 percent) demonstrated a need for improvements in law enforcement.
- **Public education and outreach:** Nineteen sites (100 percent) demonstrated adequate or excellent public education and outreach programs.

Many of the management challenges noted in the findings may be directly related to the following:

- **Staffing Levels:** On four sites (21.1 percent) the teams found that staffing levels were less than adequate to protect the resources, while on 15 sites (78.9 percent) the staffing levels were adequate or excellent;

- **Funding Levels:** On 18 sites (94.7 percent) the teams found funding levels were adequate or excellent for proper management of resources, while on one site (5.3 percent) funding levels were less than what the review team thought was needed for proper management;
- **Equipment:** On 19 sites (100 percent) the team found adequate or excellent equipment to properly manage the property.

Pursuant to section 259.036, F.S., if the land management review team determines that reviewed lands are not being managed for purposes compatible with conservation, preservation, or recreation or in compliance with the adopted land management plan, DEP shall provide the review findings to the BOT, and the managing agency must report to the BOT its reasons for managing the lands as it has.

All 19 properties reviewed were found to be managed for purposes compatible with conservation, preservation, or recreation; and actual management practices, including public access, were found to be in compliance with the adopted management plans.

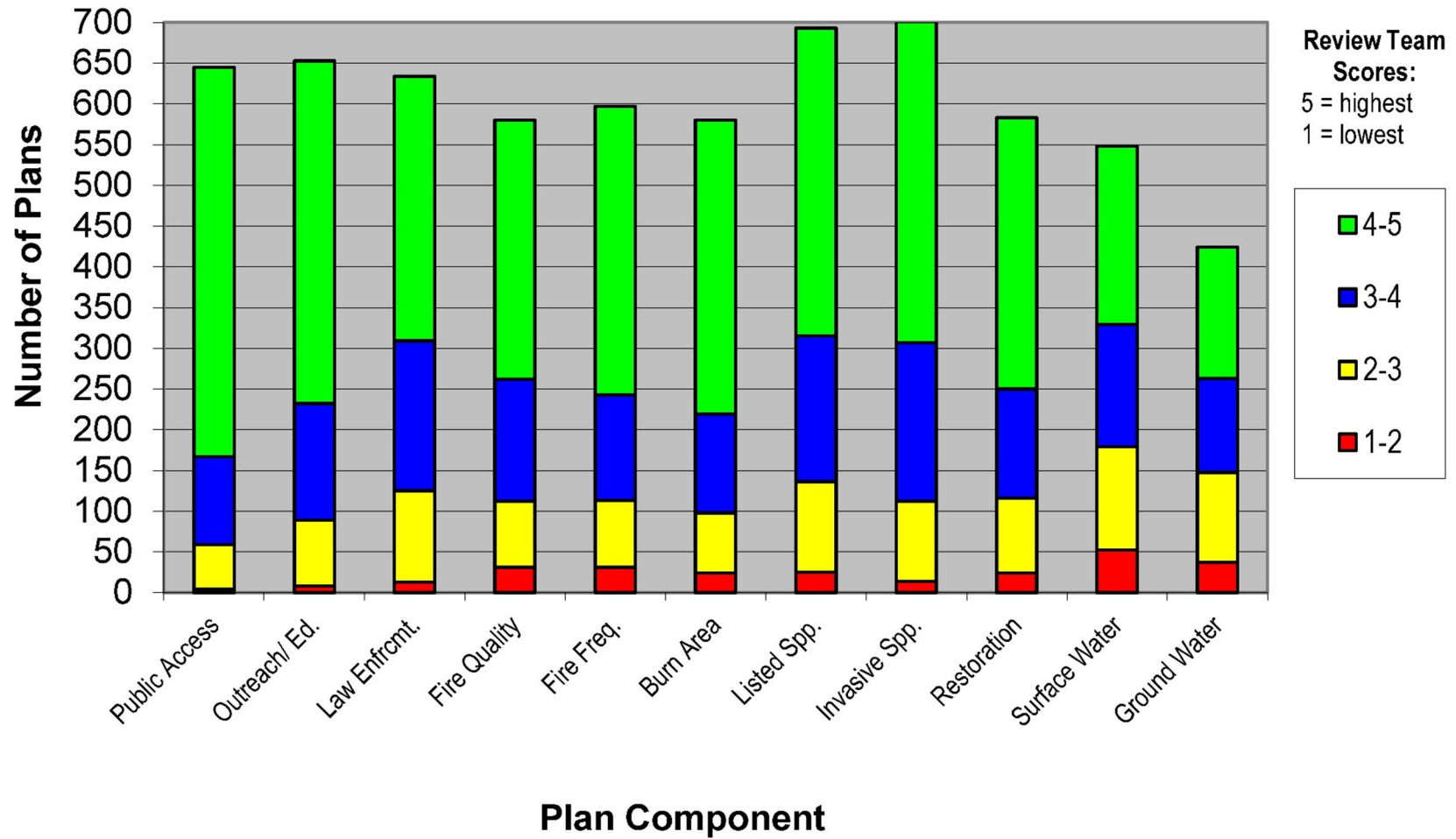
Reports of the management review team findings have been provided to the managing agency for their review and response and to the ARC. The reports can be accessed on the DSL web site. Evaluations of management plans and management activities in the field over the last 24 years are presented here in addition to the review team reports.

Acronyms

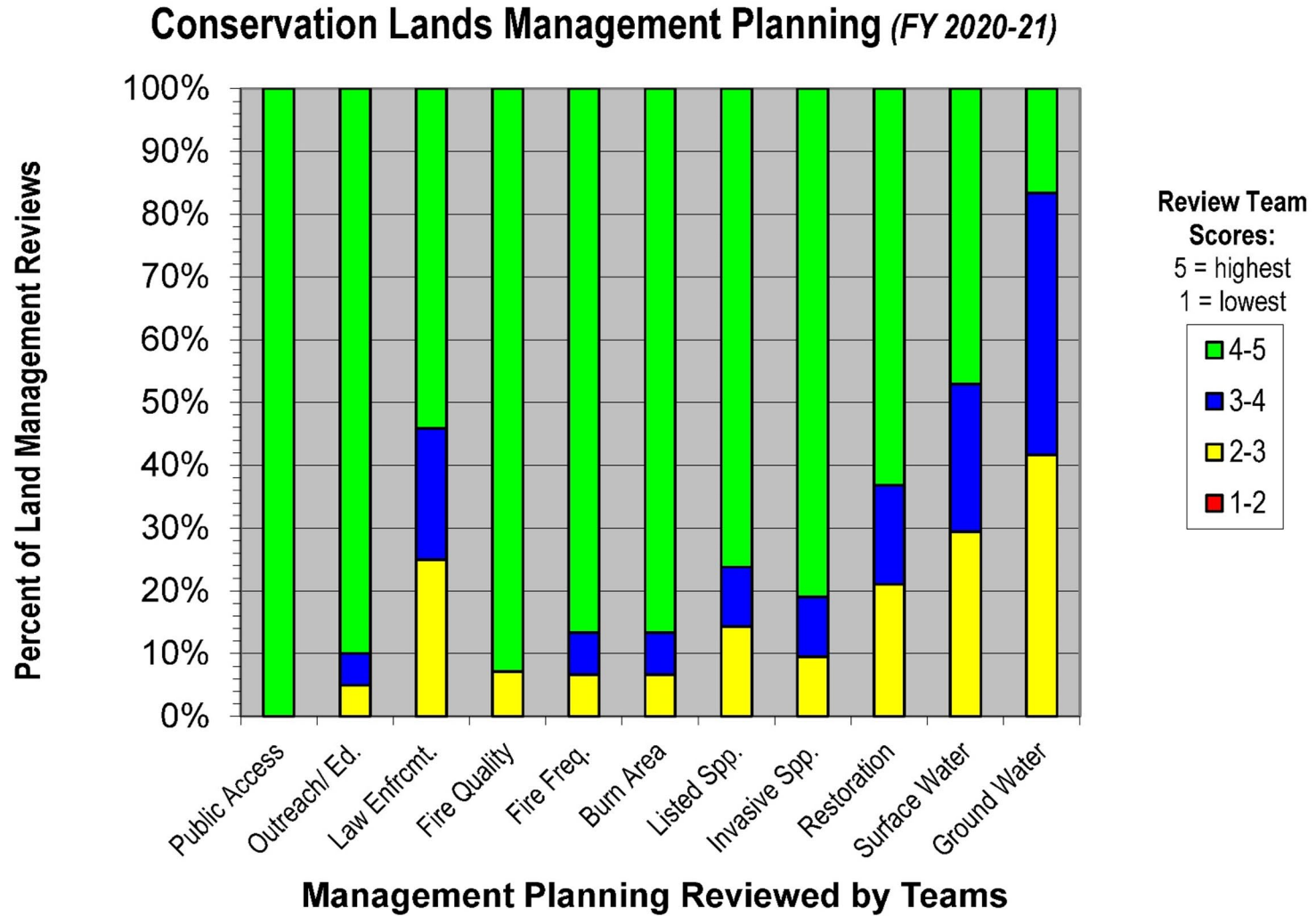
| | |
|-------------|---|
| ACOE | United States Army Corps of Engineers |
| ARC | Acquisition and Restoration Council |
| CSO | Citizen Support Organization |
| DEP | Florida Department of Environmental Protection |
| DHR | Division of Historical Resources, Department of State |
| DOT | Florida Department of Transportation |
| DRP | Division of Recreation and Parks, Florida Department of Environmental Protection |
| DSL | Division of State Lands, Florida Department of Environmental Protection |
| FCO | Florida Coastal Office, Florida Department of Environmental Protection |
| FFS | Florida Forest Service, Florida Department of Agriculture and Consumer Services |
| FNAI | Florida Natural Areas Inventory |
| FNPS | Florida Native Plant Society |
| FWC | Florida Fish and Wildlife Conservation Commission |
| IPM | Invasive Plant Management Section, Florida Fish and Wildlife Conservation Commission |
| NERR | National Estuarine Research Reserve |
| OES | Office of Environmental Services, Division of State Lands, Florida Department of Environmental Protection |
| SF | State Forest |
| SP | State Park |
| WEA | Wildlife and Environmental Area |
| WMA | Wildlife Management Area |
| WMD | Water Management District |

Management Planning

Management Planning (Fiscal Years 1997-2021)

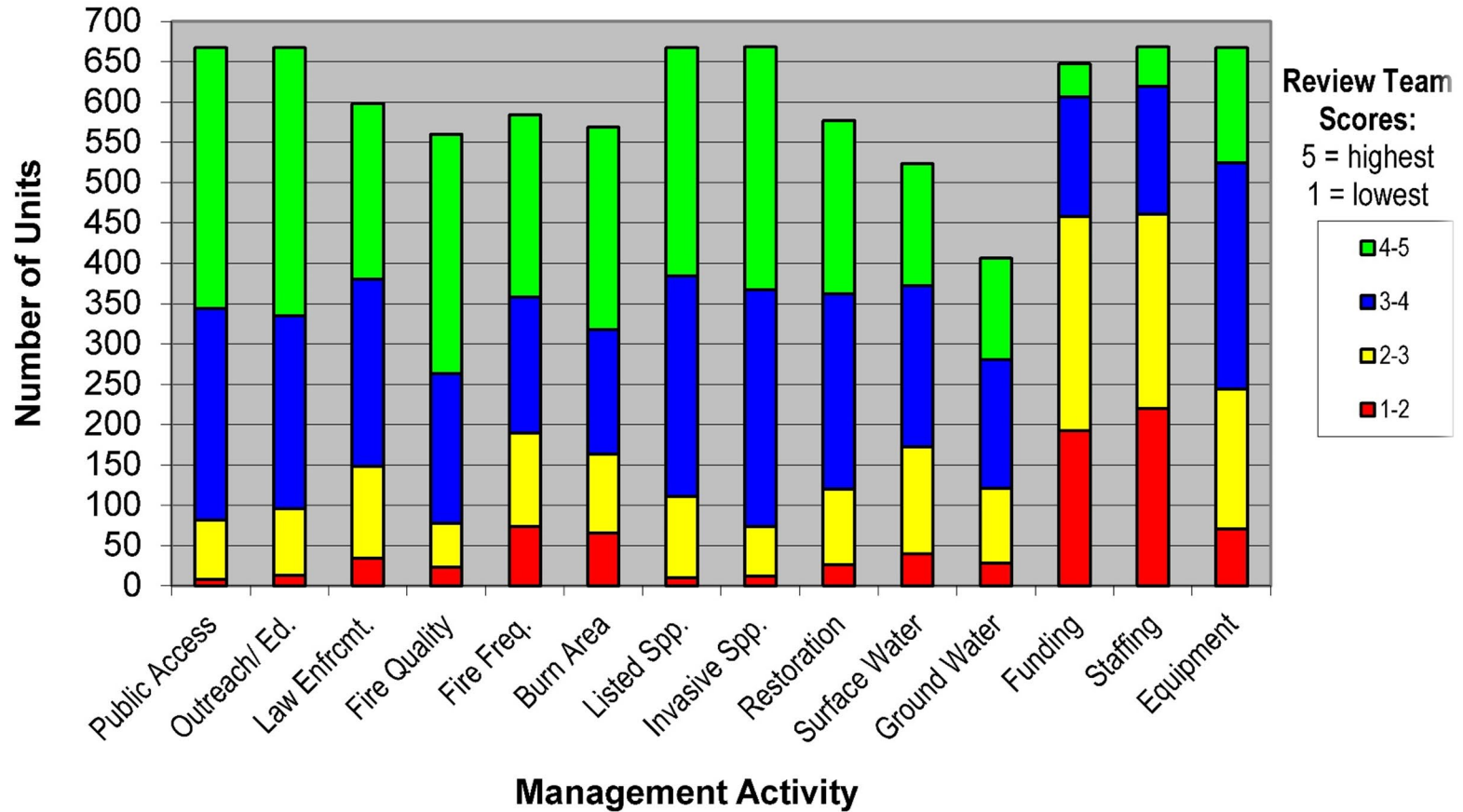


Conservation Lands Management Planning



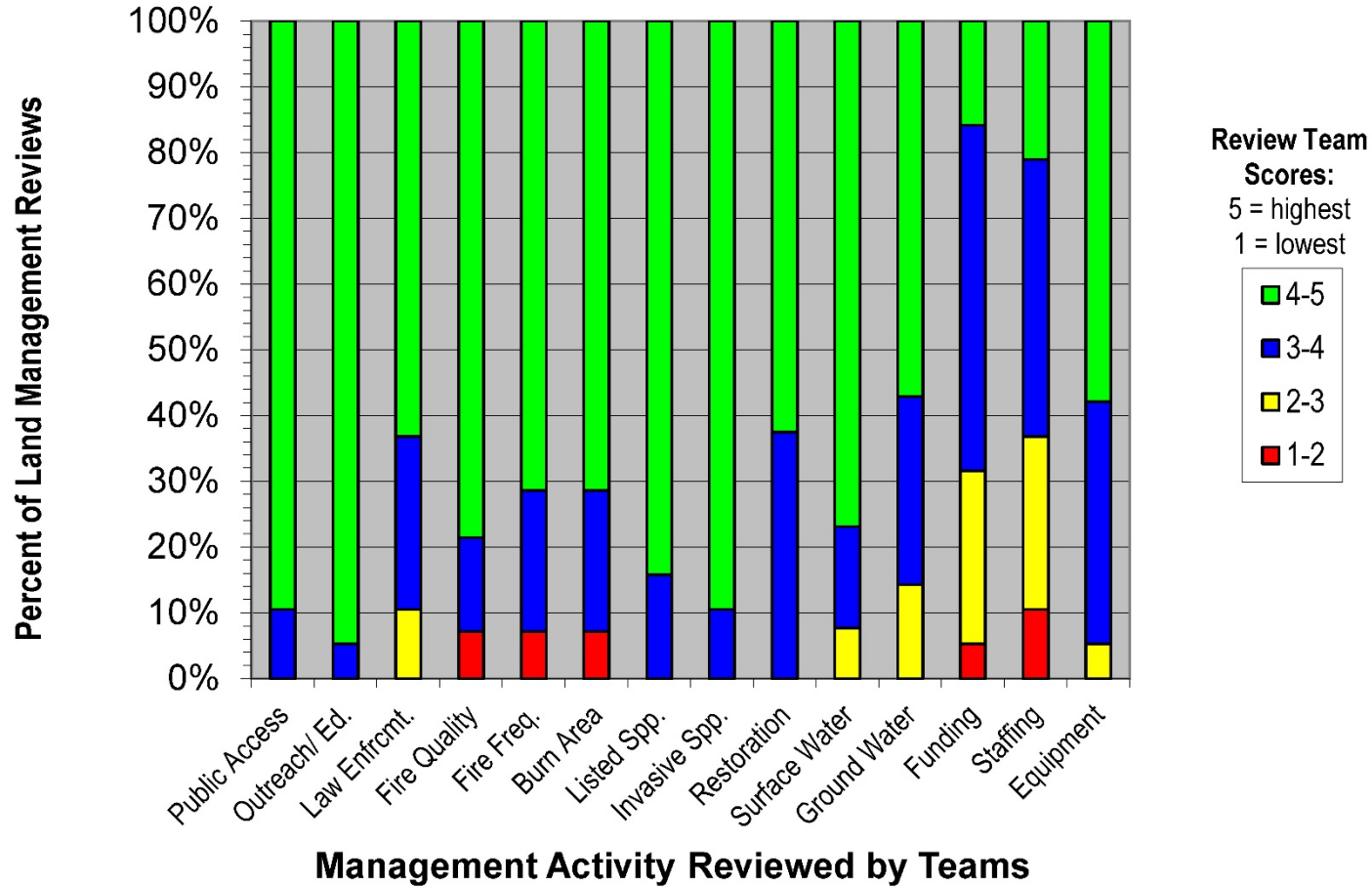
Management Implementation

Management Implementation (Fiscal Years 1997-2021)



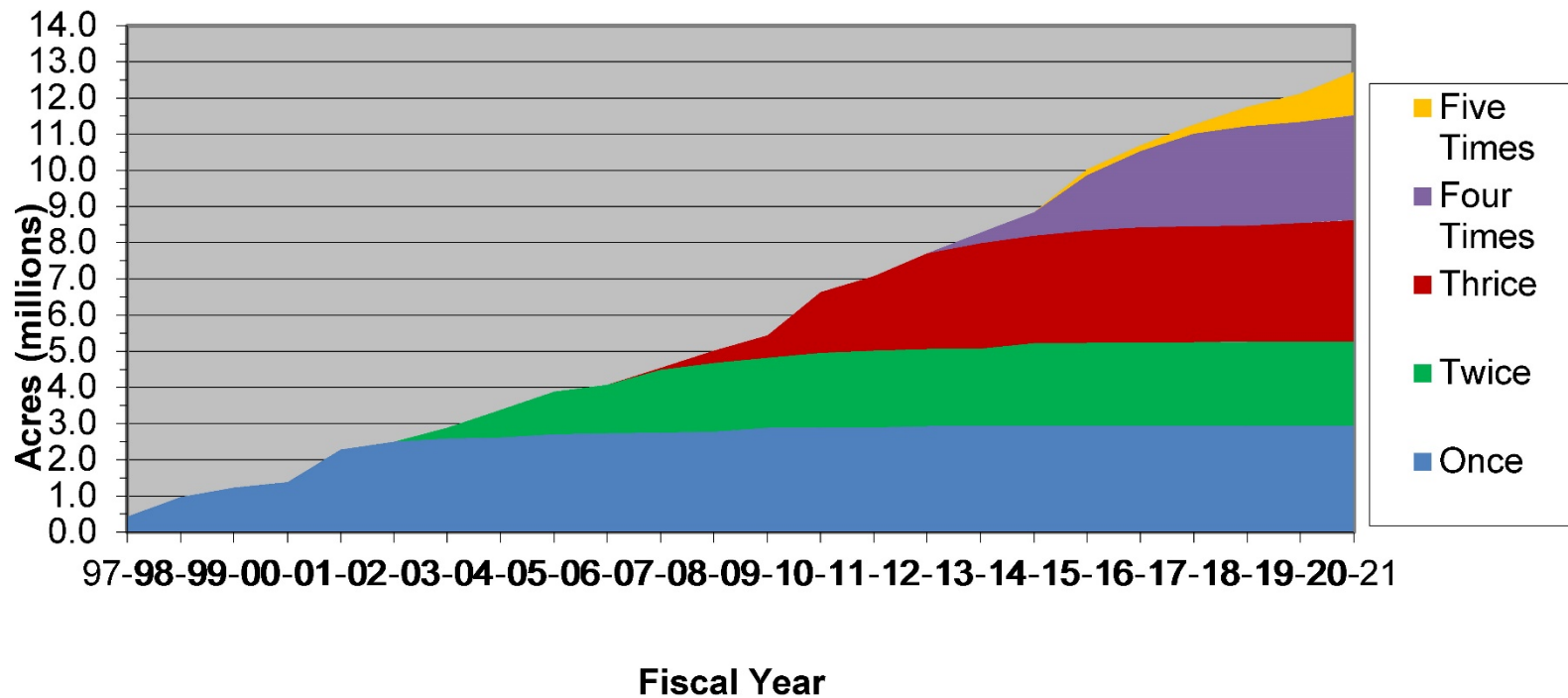
Conservation Lands Management Implementation

Conservation Lands Management Implementation (FY 2020-21)



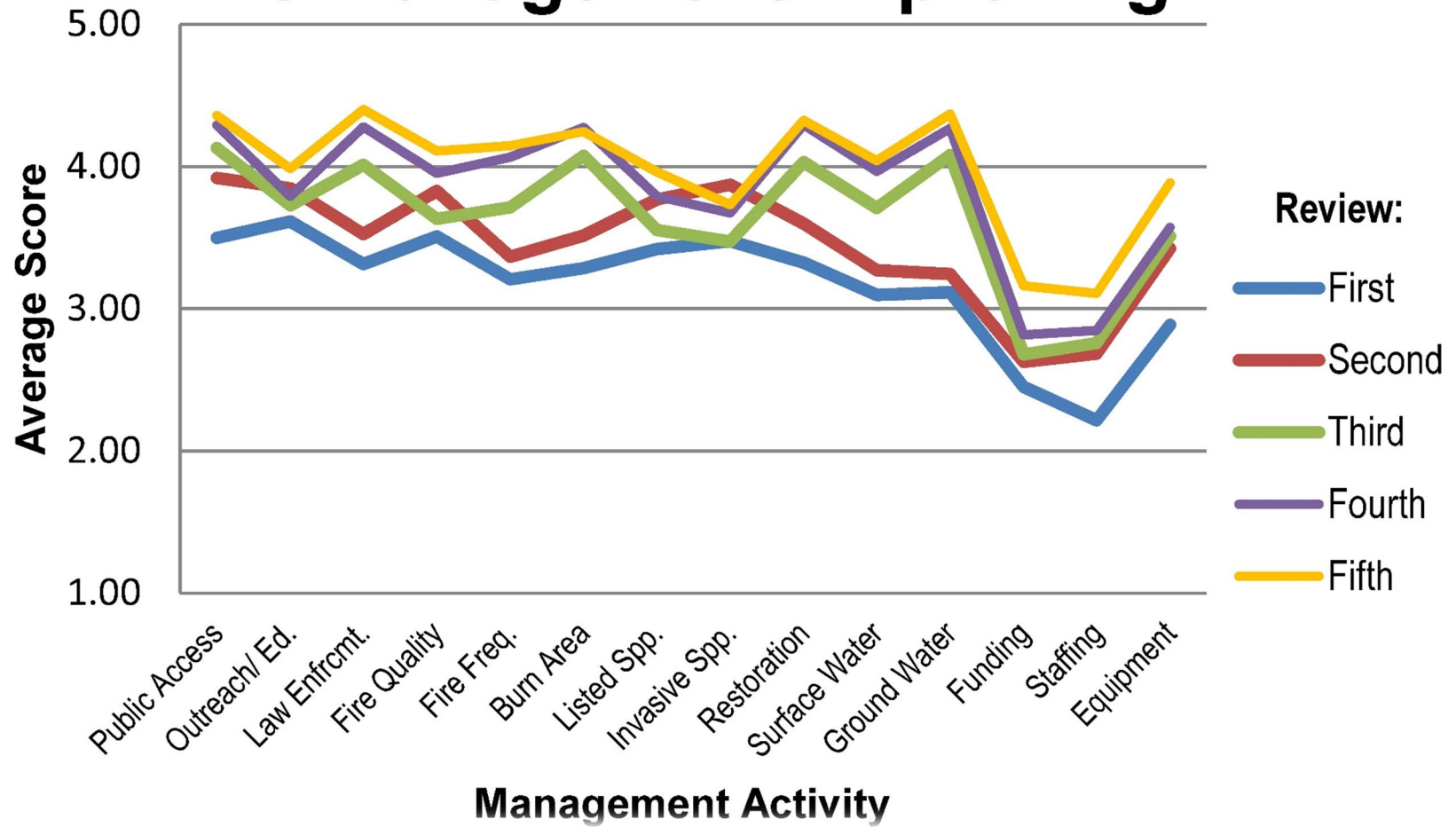
Cumulative Acreage Reviewed

Cumulative Acreage Reviewed

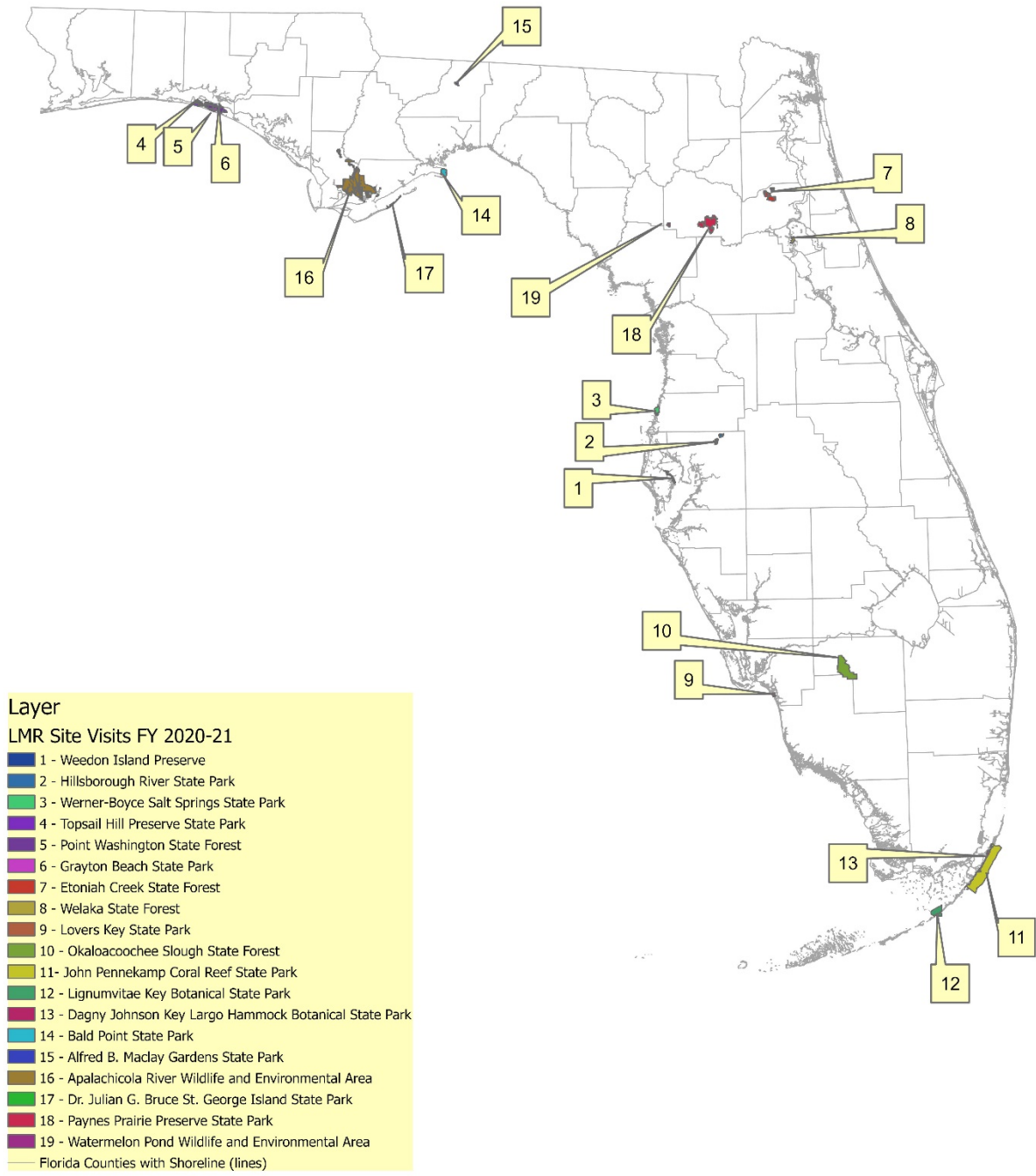


Effect of Management

Is Management Improving?



Overview of LMR site locations



Weedon Island Preserve

Managed by: Pinellas County

Acres: 3,164

County: Pinellas

Purpose(s) for Acquisition: For the conservation and protection of natural and historical resources and for resource-based public outdoor recreation which is compatible with the conservation and protection of these public lands.

Acquisition Program(s): EEL, P2000/CARL

Original Acquisition Date: 1974

Area Reviewed: TIITF owned portions

Last Management Plan Approval Date: 1/28/12

Review Date: 11/17/20

Agency Manager and Key Staff:

- Pam Leasure, Manager

Review Team Members (voting)

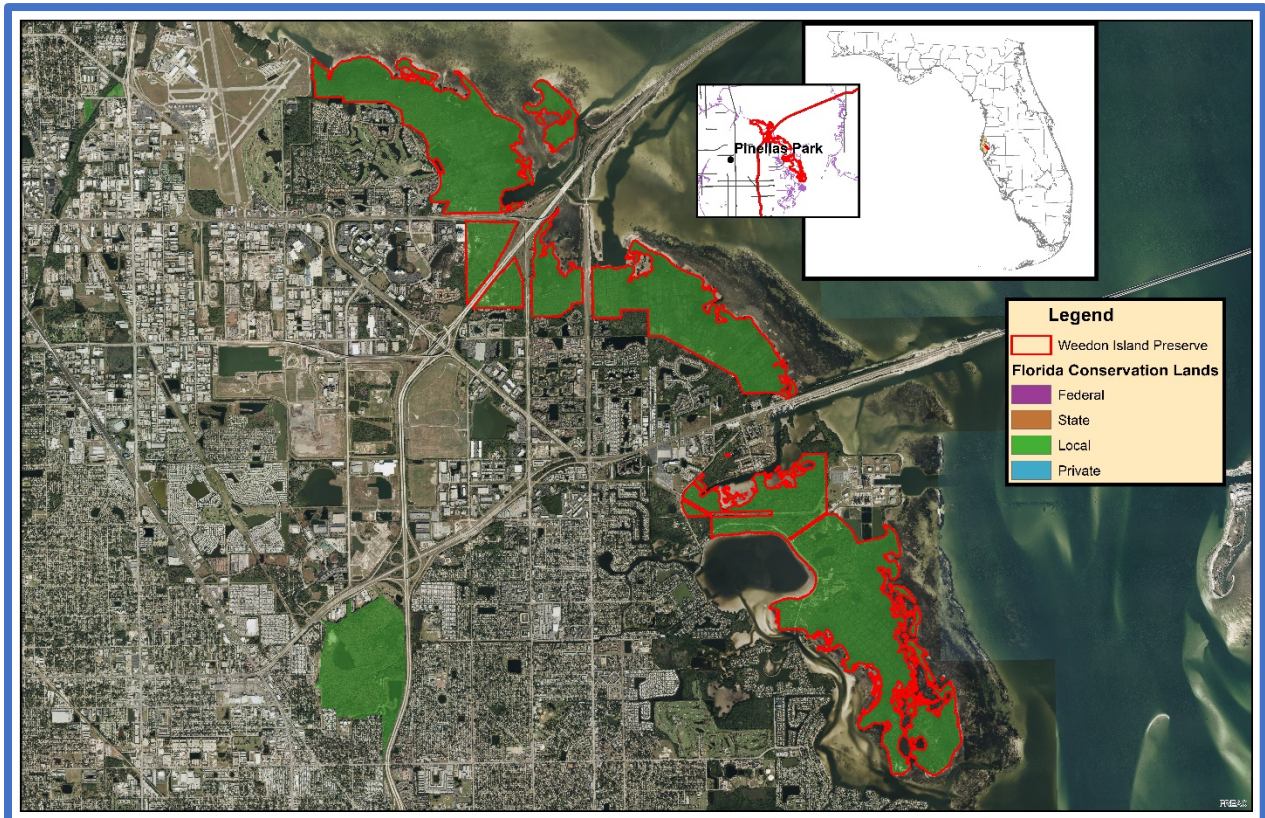
- Tracey Muzyczka, DRP District
- Lisa Baltus, Local Gov't.
- Mike Jennings, FWC
- Alexander Pacelko, DEP District

- Corey Walk, FFS
- NFWFMD, None
- Dave Perkey, Conservation Org.
- Private Land Manager, None

Non-Team Members (attending)

- Keith Singleton, DEP/DSL

Property Map



Overview of Land Management Review Results

Is the property managed for purposes that are compatible with conservation, preservation, or recreation?

Yes = 6, No = 0

Are the management practices, including public access, in compliance with the management plan?

Yes = 6, No = 0

Table 1 shows the average scores received for each applicable category of review. Field Review scores refer to the adequacy of management actions in the field, while Management Plan Review scores refer to adequacy of discussion of these topics in the management plan. Scores range from 1 to 5 with 5 signifying excellence. For a more detailed key to the scores, please see Appendix A.

Consensus Commendations for the Managing Agency

The following commendations resulted from discussion and vote of the review team members:

1. The team commends the Pinellas County staff for the outstanding control of invasive species at the preserve. (6+, 0-)
2. The team commends the Pinellas County staff recruitment and use of volunteers in the absence of adequate staffing. (6+, 0-)

Consensus Recommendations to the Managing Agency

The following recommendations resulted from a discussion and vote of review team members. The next management plan update should include information about how these recommendations have been addressed:

1. The team recommends the Pinellas County recruit a full-time ranger for the preserve to conduct trail maintenance, education, exotic species removal and site security. (6+, 0-)

Managing Agency Response: We remain committed to managing the preserve to the best of our ability with the resources provided. We continue to look for opportunities to expand resources to meet the needs of management plan. The County budget is developed and evaluated to address the many demands facing the county. Financial assistance provided by the Bureau of State Lands would be beneficial to the management of the preserve.

2. The team recommends the Pinellas County staff conduct more prescribed fire, as described in the management plan. (6+, 0-)

Managing Agency Response: We will continue to make prescribed fire a priority for managing the fire-adapted communities in the Preserve as determined by available resources. The last prescribed fire was in 2013. Working with our Regional Forest Area Supervisor should help to increase the frequency of prescribed fire in the preserve.

Table 1: Results at a glance.

| Major Land Management Categories | Field Review | Management Plan Review | |
|---|---------------|------------------------|------|
| Natural Communities / Forest Management | 3.55 | 2.98 | |
| Prescribed Fire / Habitat Restoration | 2.61 | 3.91 | |
| Hydrology | 4.25 | 4.19 | |
| Imperiled Species | 3.85 | 3.33 | |
| Exotic / Invasive Species | 4.03 | 4.03 | |
| Cultural Resources | 4.80 | 5.00 | |
| Public Access / Education / Law Enforcement | 4.27 | 4.35 | |
| Infrastructure / Equipment / Staffing | 3.58 | N/A | |
| Color Code (See Appendix A for detail) | | | |
| Excellent | Above Average | Below Average | Poor |

3. The team recommends the Pinellas County establish a carrying capacity at the preserve. (6+, 0-)

Managing Agency Response: We recognize a carrying capacity needs to be considered. Enforcement of an established carrying capacity would require full time staff for the preserve. We will continue to look for funding opportunities to address capacity concerns.

Field Review Checklist Findings

The following items received high scores on the review team checklist, which indicates that management actions exceeded expectations.

1. **Natural communities, xeric hammock, marine unconsolidated substrate, coastal berm, salt marsh, salt flat, seagrass beds, and mollusk reef.**
2. **Listed species, animals and plants in general, and specifically gopher tortoise, manatee, and golden aster.**
3. **Cultural Resources, specifically cultural resource survey, and protection and preservation.**
4. **Restoration, specifically Feather Sound, and Weedon Island.**
5. **Non-native, invasive, and problem species, specifically prevention and control of pests/pathogens, and control of plants, and animals,**
6. **Hydro-alteration, specifically ditches and hydroperiod alterations.**
7. **Surface Water Monitoring, specifically quality, and quantity.**
8. **Resource protection, specifically gates and fencing, and signage.**
9. **Public access, specifically roads, parking, and boat access.**
10. **Environmental education and outreach, specifically wildlife, invasive species, interpretive facilities and signs, recreational opportunities, and management of visitor impacts.**
11. **Management resources, specifically waste disposal, sanitary facilities, buildings, and equipment.**

Items Requiring Improvement Actions in the Field

The following items received low scores on the review team checklist, which indicates that management actions noted during the Field Review were not considered sufficient (less than 3.0 score on average). Please note that overall good scores do not preclude specific recommendations by the review team requiring remediation. The management plan update should include information on how these items have been addressed:

1. **Natural Resources Survey, specifically fire effects monitoring, received a below average score. The review team is asked to evaluate, based on information provided by the managing agency, whether survey and monitoring of the resources or their habitats are sufficient.**

Managing Agency Response: Survey/monitoring activities (annual/bi-annual photo points) by staff were eliminated in 2008 due to budget constraints. Current monitoring is pre/post burn evaluations for quality of burns. We have and will continue to utilize volunteers where available and appropriate to survey and monitor natural communities. All updates to species lists will be provided in the management plan update.

2. **Resource Management, Prescribed Fire, specifically area being burned, frequency, and quality received below average scores. The review team is asked to evaluate, based on information provided by the managing agency, to what degree prescribed fire is accomplished according to the objectives for prescribed fire management. The scores range from 1 to 5, with 1 being 0-20% accomplished, 2 being 21-40%, 3 being 41-60%, 4 being 61-80% and 5 being 81-100%.**

Managing Agency Response: We will continue to make prescribed fire a priority for managing fire-adapted communities in the Preserve. The frequency at which burns can be completed, as dictated

by available staff and resources as well as environmental constraints, will be discussed in more detail in the plan update.

- 3. Forest Management, specifically timber inventory, received a below average score. The review team is asked to evaluate, based on information provided by the managing agency, whether forest management is sufficient.**

Managing Agency Response: Based on review team comments, we will include reforestation with native longleaf pine and South Florida slash pine in our restoration plan. The 2018 Weedon Island Tidal Restoration Plan includes upland restoration as well. This discussion will be included in the plan update.

- 4. Management Resources, specifically staff, and funding, received below average scores. The review team is asked to evaluate, based on information provided by the managing agency, whether management resources are sufficient.**

Managing Agency Response: We will describe and discuss if staffing resources for management of the preserve are sufficient. We will discuss County's budget, the only source of funding for staffing the preserve.

Items Requiring Improvements in the Management Plan

The following items received low scores on the review team checklist, which indicates that the text noted in the Management Plan Review does not sufficiently address this issue (less than 3.0 score on average). Please note that overall good scores do not preclude specific recommendations by the review team requiring remediation. The next management plan update should address the checklist items identified below:

- 1. Natural Communities, specifically marine unconsolidated substrate, coastal berm and mollusk reef, received below average scores. This is an indication that the management plan does not sufficiently address current or desired condition and/or future management actions to protect or restore.**

Managing Agency Response: We will discuss the current conditions and future management of all natural communities including; marine unconsolidated substrate, coastal berm and mollusk reef in the management plan update.

- 2. Listed Species protection and preservation, specifically gopher tortoise, received a below average score. This is an indication that the management plan does not sufficiently address protection and preservation of listed species.**

Managing Agency Response: We will discuss the protection and preservation of listed animal species in the resource management portion of the plan update.

- 3. Forest Management, specifically timber inventory, received a below average score. This is an indication that the management plan does not sufficiently address forest management.**

Managing Agency Response: Timber harvesting is not an option within the Weedon Island Preserve. This discussion will be included in the plan update.

- 4. Adjacent Property Concerns, specifically development impacts to prescribed burning, received a below average score. This is an indication that the management plan does not sufficiently address adjacent property.**

Managing Agency Response: We will include in the plan update a discussion of any impacts or concerns with the adjacent properties in relation to prescribed burning.

5. **Managed Area Uses, Existing Uses, specifically camping, received a below average score. This is an indication that the management plan does not sufficiently address managed area uses.**

Managing Agency Response: We will include in the plan update a discussion of the camping usage and policy in the preserve.

Hillsborough River State Park

Managed by: Department of Environmental Protection, Florida Park Service

Acres: 3,319.04

County: Hillsborough

Purpose(s) for Acquisition: For the conservation and protection of natural and historical resources and for resource-based public outdoor recreation which is compatible with the conservation and protection of these public lands To manage the property in such a way as to protect and restore the natural and cultural values of the property and provide the greatest benefit to the citizens of the state.

Acquisition Program(s): “Old Money”, LATF, P2000/CARL

Original Acquisition Date: 6/10/36

Area Reviewed: Entire Property

Last Management Plan Approval Date: 6/12/20

Review Date: 11/18/20

Agency Manager and Key Staff:

- Brian Pinson, Park Manager
- Celena Zimmerman, Asst Park Manager

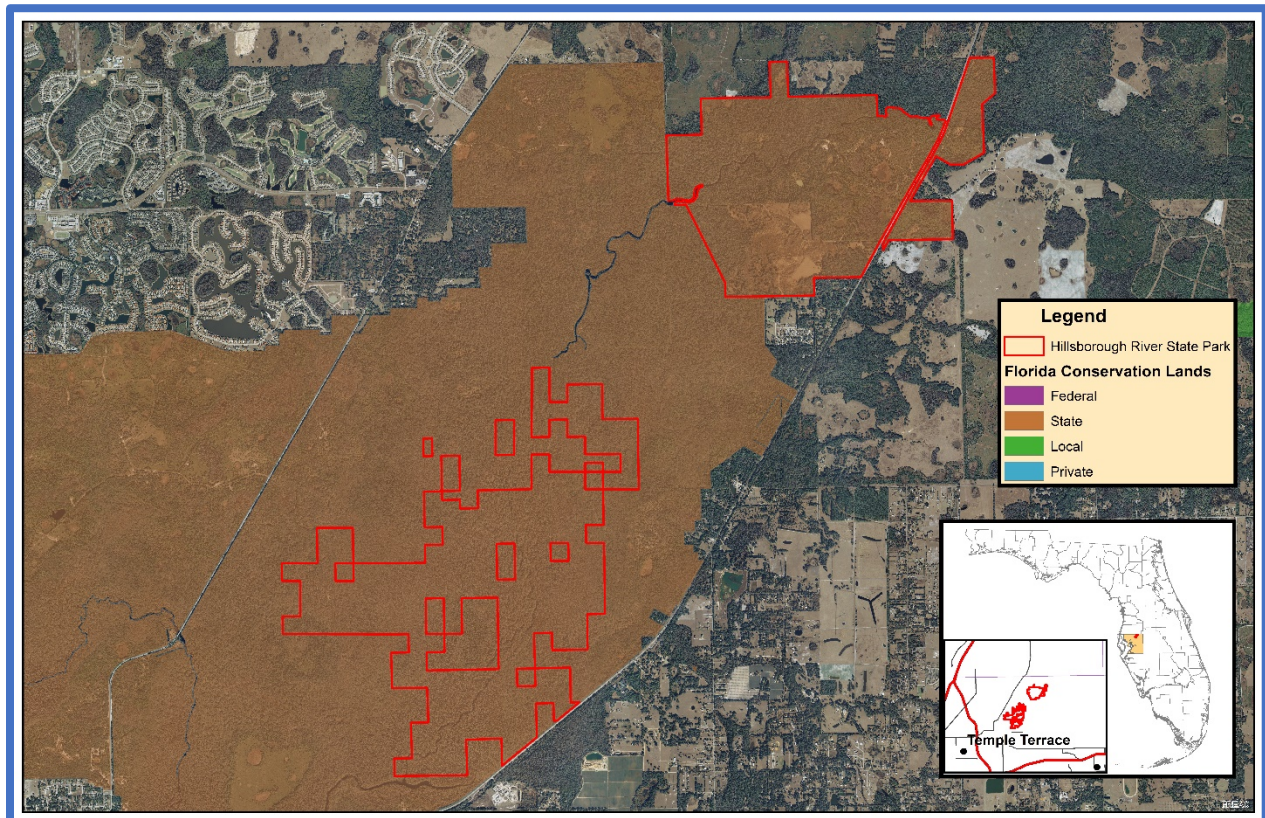
Review Team Members (voting)

- Matthew Hodge, DRP District
- Stephen Raymond, Local Gov’t.
- Nick Jennings, FWC
- Virginia Overstreet, Conservation Org.
- DEP District, None
- Private Land Manager, None
- Michael Edwards, FFS
- Cyndi Gates, SWFWMD

Non-Team Members (attending)

- Keith Singleton, DEP/DSL
- Jason LaPointe, SWFWMD

Property Map



Overview of Land Management Review Results

Is the property managed for purposes that are compatible with conservation, preservation, or recreation?

Yes = 6, No = 0

Are the management practices, including public access, in compliance with the management plan?

Yes = 6, No = 0

Table 1 shows the average scores received for each applicable category of review. Field Review scores refer to the adequacy of management actions in the field, while Management Plan Review scores refer to adequacy of discussion of these topics in the management plan. Scores range from 1 to 5 with 5 signifying excellence. For a more detailed key to the scores, please see Appendix A.

Consensus Commendations for the Managing Agency

The following commendations resulted from discussion and vote of the review team members:

1. The team commends the Division of Recreation and Parks (DRP) for an excellent resource management, fire management and monitoring program. Additionally, exotic pest plant control efforts have shown excellent results. Park staff are doing an excellent job with the funds provided. (6+, 0-)
2. The team commends the park staff for the excellent work with the interpretive programs including the Fort Foster site, CCC cabin, increased community outreach and public education of Florida history. (6+, 0-)

Consensus Recommendations to the Managing Agency

The following recommendations resulted from a discussion and vote of review team members. The next management plan update should include information about how these recommendations have been addressed:

1. The team recommends the DRP strongly consider re-instating the staff positions that have been cut since 2010. (6+, 0-)

Managing Agency Response: Additional staff can only be assigned to this or other park units if they are appropriated by the Legislature or reassigned from other units. Funding is determined annually by the Florida Legislature.

2. The team recommends the DRP increase funding for the management of the park due to the pending urban expansion in the vicinity. (6+, 0-)

Managing Agency Response: Division funding is appropriated annually by the Florida Legislature. This funding is allocated at the Division and District levels in order to best meet annual operational and resource management needs. Any deemed increase in Division Budget/staffing will follow the established legislative budget request process.

Table 2: Results at a glance.

| Major Land Management Categories | Field Review | Management Plan Review | |
|---|---------------|------------------------|------|
| Natural Communities / Forest Management | 4.48 | 4.35 | |
| Prescribed Fire / Habitat Restoration | 4.47 | 4.17 | |
| Hydrology | 4.08 | 4.01 | |
| Imperiled Species | 4.04 | 4.15 | |
| Exotic / Invasive Species | 4.17 | 4.00 | |
| Cultural Resources | 5.00 | 4.92 | |
| Public Access / Education / Law Enforcement | 4.07 | 3.96 | |
| Infrastructure / Equipment / Staffing | 3.69 | N/A | |
| Color Code (See Appendix A for detail) | | | |
| Excellent | Above Average | Below Average | Poor |

Field Review Checklist Findings

The following items received high scores on the review team checklist, which indicates that management actions exceeded expectations.

1. **Natural communities, specifically mesic flatwoods, sinkhole, mesic hammock, depression marsh, dome swamp, floodplain swamp, hydric hammock, wet flatwoods and blackwater stream.**
2. **Listed species, animals and plants in general, and specifically Brooksville bellflower.**
3. **Natural Resources Survey/Monitoring Resources; specifically fire effects monitoring, and invasive species survey and monitoring.**
4. **Cultural Resources, specifically cultural resource survey, and protection and preservation.**
5. **Prescribed Fire; specifically area being burned, frequency and quality.**
6. **Restoration, specifically Model Dairy.**
7. **Non-native, invasive, and problem species, specifically prevention and control of plants, and animals, and pests/pathogens.**
8. **Hydro-alteration, specifically roads, ditches and hydroperiod alterations.**
9. **Surface Water Monitoring, specifically quality, and quantity.**
10. **Resource protection, specifically boundary survey, and gates and fencing.**
11. **Adjacent property concerns, land use, specifically expanding development, and inholdings and additions.**
12. **Public access, specifically roads, parking, and boat access.**
13. **Environmental education and outreach, specifically wildlife, invasive species, habitat management activities, interpretive facilities and signs, recreational opportunities, and management of visitor impacts.**
14. **Management resources, specifically waste disposal, sanitary facilities, buildings, and equipment.**

Items Requiring Improvement Actions in the Field

The following items received low scores on the review team checklist, which indicates that management actions noted during the Field Review were not considered sufficient (less than 3.0 score on average). Please note that overall good scores do not preclude specific recommendations by the review team requiring remediation. The management plan update should include information on how these items have been addressed:

1. **Resources Protection, specifically law enforcement presence, received a below average score. The review team is asked to evaluate, based on information provided by the managing agency, whether resources are sufficient to protect the property.**

Managing Agency Response: Law enforcement assistance must be obtained through the Florida Fish and Wildlife Conservation Commission's Division of Law Enforcement or from a local law enforcement agency. Park staff will request additional presence to protect resources as necessary.

2. **Management Resources, specifically staff, and funding, received below average scores. The review team is asked to evaluate, based on information provided by the managing agency, whether management resources are sufficient.**

Managing Agency Response: Additional staff can only be assigned to this or other park units if they are appropriated by the Legislature or reassigned from other units. Funding is determined annually by the Florida Legislature.

Items Requiring Improvements in the Management Plan

The following items received low scores on the review team checklist, which indicates that the text noted in the Management Plan Review does not sufficiently address this issue (less than 3.0 score on average). Please note that

overall good scores do not preclude specific recommendations by the review team requiring remediation. The next management plan update should address the checklist items identified below:

The review team scores did not identify items requiring improvements in the management plan.

Werner-Boyce Salt Springs State Park

Managed by: Department of Environmental Protection, Florida Park Service

Acres: 3,999

County: Pasco

Purpose(s) for Acquisition: The Board of Trustees of the Internal Improvement Trust Fund of the State of Florida acquired Werner-Boyce Salt Springs State Park to protect a relatively unaltered biological system representative of the Pasco-Hernando County Gulf Coast.

Acquisition Program(s): EEL, P2000/CARL

Original Acquisition Date: 12/31/92

Area Reviewed: Entire Property

Last Management Plan Approval Date: 2/18/13

Review Date: 11/19/20

Agency Manager and Key Staff:

- Adam Belden, Park Manager
- Michael Faustini, Park Service Specialist
- Karen Strawn, Asst Park Manager

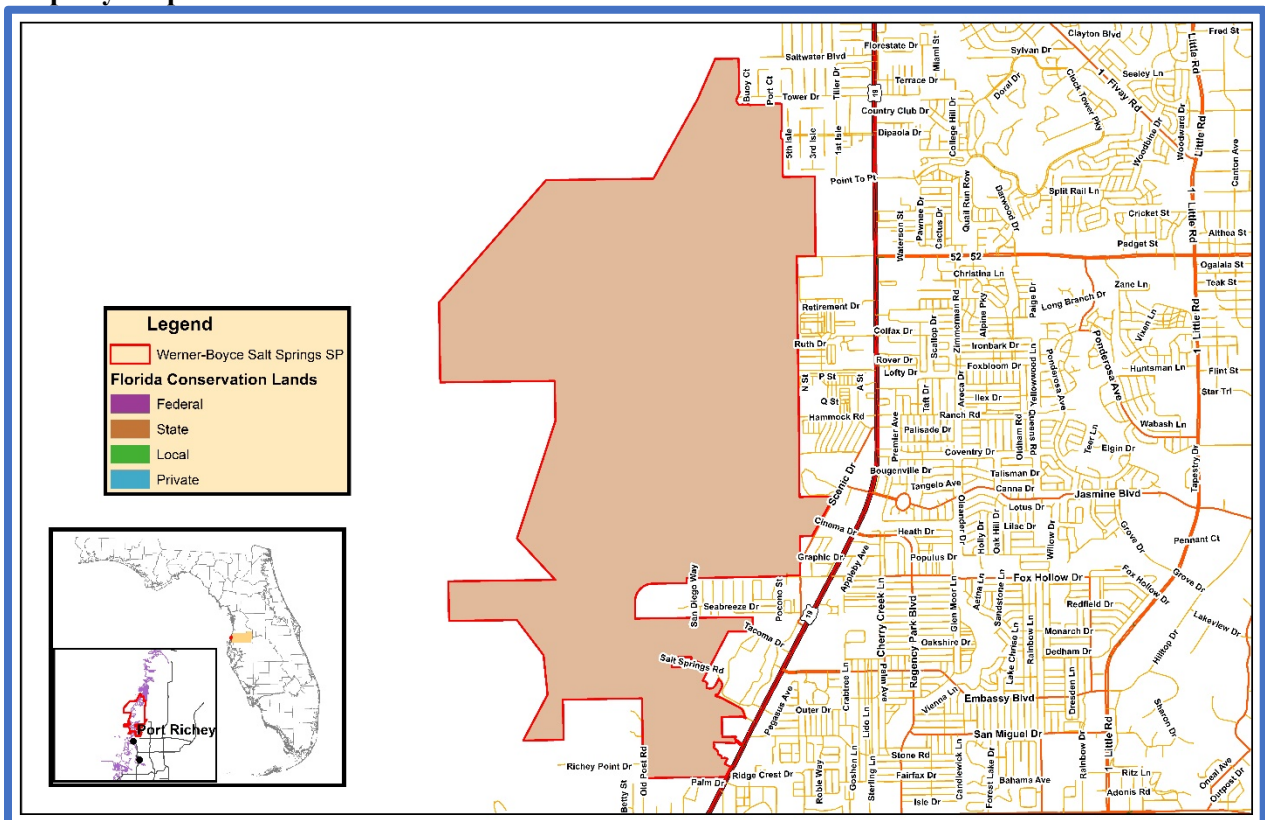
Review Team Members (voting)

- Tracy Musyczka, DRP District
- Local Gov't., None
- Nick Jennings, FWC
- Matt Dinning, DEP District
- Michael Edwards, FFS
- SWFWMD, None
- Jim Surdick, Conservation Org.
- Private Land Manager, None

Non-Team Members (attending)

- Keith Singleton, DEP/DSL

Property Map



Overview of Land Management Review Results

Is the property managed for purposes that are compatible with conservation, preservation, or recreation?

Yes = 5, No = 0

Are the management practices, including public access, in compliance with the management plan?

Yes = 5, No = 0

Table 1 shows the average scores received for each applicable category of review. Field Review scores refer to the adequacy of management actions in the field, while Management Plan Review scores refer to adequacy of discussion of these topics in the management plan. Scores range from 1 to 5 with 5 signifying excellence. For a more detailed key to the scores, please see Appendix A.

Consensus Commendations for the Managing Agency

The following commendations resulted from discussion and vote of the review team members:

1. The team commends the Division of Recreation and Parks (DRP) for the park’s improvements to educational and interpretive signs made since the last land management review. (5+, 0-)

Table 3: Results at a glance.

| Major Land Management Categories | Field Review | Management Plan Review | |
|---|---------------|------------------------|------|
| Natural Communities / Forest Management | 2.92 | 3.99 | |
| Prescribed Fire / Habitat Restoration | 3.67 | 4.20 | |
| Hydrology | 3.33 | 4.04 | |
| Imperiled Species | 3.88 | 4.14 | |
| Exotic / Invasive Species | 4.10 | 4.13 | |
| Cultural Resources | 5.00 | 4.60 | |
| Public Access / Education / Law Enforcement | 4.77 | 4.34 | |
| Infrastructure / Equipment / Staffing | 4.33 | N/A | |
| Color Code (See Appendix A for detail) | | | |
| Excellent | Above Average | Below Average | Poor |

Consensus Recommendations to the Managing Agency

The following recommendations resulted from a discussion and vote of review team members. The next management plan update should include information about how these recommendations have been addressed:

There were no consensus recommendations to the managing agency.

Field Review Checklist Findings

The following items received high scores on the review team checklist, which indicates that management actions exceeded expectations.

1. **Natural communities, maritime hammock, mesic flatwoods, mesic hammock, scrubby flatwoods, hydric hammock, basin swamp, flatwoods lake, spring run stream, seagrass beds, aquatic cave, salt marsh, mangrove swamp, and unconsolidated substrates.**
2. **Listed species, plants in general, and specifically Tampa vervain.**
3. **Natural Resources Survey/Monitoring Resources; specifically invasive species survey and monitoring.**
4. **Cultural Resources, specifically cultural resource survey, and protection and preservation.**
5. **Prescribed Fire; specifically quality.**
6. **Non-native, invasive, and problem species, specifically prevention and control of plants, and pests/pathogens, and control of animals.**
7. **Hydro-alteration, specifically roads, and hydroperiod alterations.**
8. **Resource protection, specifically boundary survey, gates and fencing, signage, and law enforcement presence.**
9. **Public access, specifically roads, parking, and boat access.**

- 10. Environmental education and outreach, specifically wildlife, invasive species, habitat management activities, interpretive facilities and signs, recreational opportunities, and management of visitor impacts.**
- 11. Management resources, specifically waste disposal, sanitary facilities, buildings, and equipment.**

Items Requiring Improvement Actions in the Field

The following items received low scores on the review team checklist, which indicates that management actions noted during the Field Review were not considered sufficient (less than 3.0 score on average). Please note that overall good scores do not preclude specific recommendations by the review team requiring remediation. The management plan update should include information on how these items have been addressed:

- 1. Natural Resources Survey, specifically fire effects monitoring, received a below average score. The review team is asked to evaluate, based on information provided by the managing agency, whether survey and monitoring of the resources or their habitats are sufficient.**

Managing Agency Response: Disagree. The Florida Park Service, as outlined in the Fire Management Standards, monitors the effects of prescribed fire on two separate occasions. An immediate post burn evaluation and then again post growing season, roughly one year later. Any further fire effects monitoring will need to be done on a case by case basis with specific objectives outlined in the updated unit management plan.

- 2. Forest Management, specifically timber inventory, received a below average score. The review team is asked to evaluate, based on information provided by the managing agency, whether forest management is sufficient.**

Managing Agency Response: The Park Service is in the process of improving its forest management through the implementation of a multi-phased statewide project which includes a vegetation inventory of upland forest communities and creating a comprehensive GIS dataset of forest/vegetation on all parks. This data will be utilized to create the timber management component of the unit management plan, and to guide forest management decisions to produce the desired future condition for each natural community.

Items Requiring Improvements in the Management Plan

The following items received low scores on the review team checklist, which indicates that the text noted in the Management Plan Review does not sufficiently address this issue (less than 3.0 score on average). Please note that overall good scores do not preclude specific recommendations by the review team requiring remediation. The next management plan update should address the checklist items identified below:

- 1. Adjacent Property Concerns, specifically discussion of potential surplus land determination, received a below average score. This is an indication that the management plan does not sufficiently address adjacent property.**

Managing Agency Response: The Division will address adjacent property concerns and the determination of surplus lands in the update of the management plan.

- 2. Managed Area Uses, Proposed Uses, specifically ranger station, received a below average score. This is an indication that the management plan does not sufficiently address managed area uses.**

Managing Agency Response: The Division will consider these recommendations for ranger station improvements during the next unit management plan revision.

Topsail Hill Preserve State Park

Managed by: Department of Environmental Protection, Florida Park Service

Acres: 1,643

County: Walton

Purpose(s) for Acquisition: The State of Florida acquired Topsail Hill Preserve State Park to develop, operate, maintain and preserve said property for outdoor recreational, park, conservation and related purposes.

Acquisition Program(s): CARL

Original Acquisition Date: 10/9/92

Area Reviewed: Entire Property

Last Management Plan Approval Date: 12/13/19

Review Date: 1/26/21

Agency Manager and Key Staff:

- Sasha Craft, Park Manager

- Daryl Hatfield, District Biologist

Review Team Members (voting)

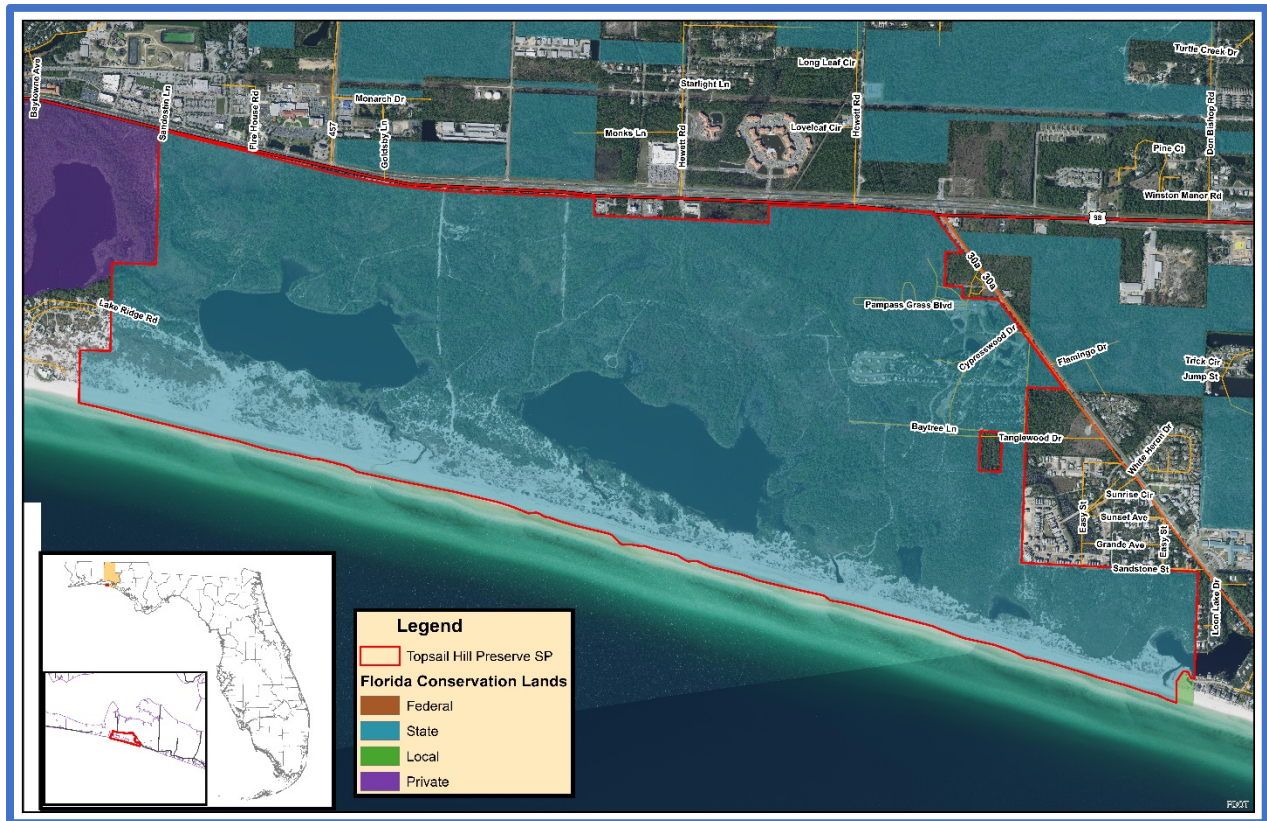
- Chris Whittle, DRP District
- Local Gov't., None
- Mike Sisson, FWC
- DEP District, None

- Jason Love, FFS
- Dan Wesley, NFWFMD
- Conservation Org., None
- Private Land Manager, None

Non-Team Members (attending)

- Keith Singleton, DEP/DSL

Property Map



Overview of Land Management Review Results

Is the property managed for purposes that are compatible with conservation, preservation, or recreation?

Yes = 4, No = 0

Are the management practices, including public access, in compliance with the management plan?

Yes = 4, No = 0

Table 1 shows the average scores received for each applicable category of review. Field Review scores refer to the adequacy of management actions in the field, while Management Plan Review scores refer to adequacy of discussion of these topics in the management plan. Scores range from 1 to 5 with 5 signifying excellence. For a more detailed key to the scores, please see Appendix A.

Consensus Commendations for the Managing Agency

The following commendations resulted from discussion and vote of the review team members:

1. The team commends the Division of Recreation and Parks (DRP) for achieving 100% of inholdings acquisition at this park. (4+, 0-)
2. The team commends the Florida Park Service (FPS) for the amount of prescribed burning being done on the property with the rapidly growing amount of development around the park. (4+, 0-)
3. The team commends the FPS for successfully working with the Tourist Development Council (TDC) to move the TDC dumpsters offsite. (4+, 0-)

Consensus Recommendations to the Managing Agency

The following recommendations resulted from a discussion and vote of review team members. The next management plan update should include information about how these recommendations have been addressed:

1. The team recommends the DRP shift to growing season burns as much as possible at this park . (4+, 0-)

Managing Agency Response:

Field Review Checklist Findings

The following items received high scores on the review team checklist, which indicates that management actions exceeded expectations.

1. **Natural communities, specifically beach dune, coastal dune, depression marsh, dome swamp, interdunal swale, marine unconsolidated substrate, maritime hammock, mesic flatwoods, mesic hammock, and scrub.**
2. **Listed species, animals and plants in general, and specifically imperiled shorebirds, sea turtles, Choctawhatchee beach mouse, gopher tortoise, wading bird rookery, wet prairie and wet flatwood species, and beach dune species.**

Table 4: Results at a glance.

| Major Land Management Categories | Field Review | Management Plan Review |
|---|---------------|------------------------|
| Natural Communities / Forest Management | 4.05 | 4.63 |
| Prescribed Fire / Habitat Restoration | 3.88 | 4.46 |
| Hydrology | 4.19 | 4.56 |
| Imperiled Species | 4.67 | 4.19 |
| Exotic / Invasive Species | 3.92 | 4.38 |
| Cultural Resources | 4.75 | 4.83 |
| Public Access / Education / Law Enforcement | 4.02 | 4.38 |
| Infrastructure / Equipment / Staffing | 3.53 | N/A |
| Color Code (See Appendix A for detail) | | |
| Excellent | Above Average | Below Average |
| | | Poor |

3. **Natural resources survey/monitoring resources; specifically listed species or their habitat monitoring, other non-game species or their habitat monitoring, fire effects monitoring, other habitat management effects monitoring, and invasive species survey and monitoring.**
4. **Cultural resources, specifically cultural resource survey, and protection and preservation.**
5. **Prescribed fire; specifically area being burned, and frequency.**
6. **Forest management, specifically timber inventory.**
7. **Non-native, invasive, and problem species, specifically prevention and control of plants, and control of animals, and pests/pathogens.**
8. **Hydro-alteration, specifically roads/culverts.**
9. **Surface Water Monitoring, specifically quality, and quantity.**
10. **Resource protection, specifically boundary survey, and signage.**
11. **Adjacent property concerns, land use, specifically inholdings and additions.**
12. **Public access, specifically parking.**
13. **Environmental education and outreach, specifically wildlife, habitat management activities, interpretive facilities and signs, recreational opportunities, and management of visitor impacts.**
14. **Management resources, specifically waste disposal, sanitary facilities, and buildings.**

Items Requiring Improvement Actions in the Field

The following items received low scores on the review team checklist, which indicates that management actions noted during the Field Review were not considered sufficient (less than 3.0 score on average). Please note that overall good scores do not preclude specific recommendations by the review team requiring remediation. The management plan update should include information on how these items have been addressed:

1. **Resources Protection, specifically law enforcement presence, received a below average score. The review team is asked to evaluate, based on information provided by the managing agency, whether resources are sufficient to protect the property.**

Managing Agency Response:

2. **Management Resources, specifically equipment, and staff, received below average scores. The review team is asked to evaluate, based on information provided by the managing agency, whether management resources are sufficient.**

Managing Agency Response:

Items Requiring Improvements in the Management Plan

The following items received low scores on the review team checklist, which indicates that the text noted in the Management Plan Review does not sufficiently address this issue (less than 3.0 score on average). Please note that overall good scores do not preclude specific recommendations by the review team requiring remediation. The next management plan update should address the checklist items identified below:

1. **Listed Species protection and preservation, specifically wading bird rookery, received a below average score. This is an indication that the management plan does not sufficiently address protection and preservation of listed species.**

Managing Agency Response:

- 2. Natural Resources Survey and Monitoring Resources, specifically sport fish or their habitat monitoring, received a below average score. This is an indication that the management plan does not sufficiently address survey or monitoring.**

Managing Agency Response:

- 3. Adjacent Property Concerns, specifically discussion of potential surplus land determination, received a below average score. This is an indication that the management plan does not sufficiently address adjacent property.**

Managing Agency Response:

Point Washington State Forest

Managed by: Department of Agriculture and Consumer Services, Florida Forest Service

Acres: 15,281

County: Walton

Purpose(s) for Acquisition:

Acquisition Program(s): CARL/P2000/Florida Forever

Area Reviewed: Entire Property

Original Acquisition Date: 5/19/92

Last Management Plan Approval Date: 8/19/16

Review Date: 1/27/21

Agency Manager and Key Staff:

- Mike Mathis, Manager
- Walter Bowers, Forester

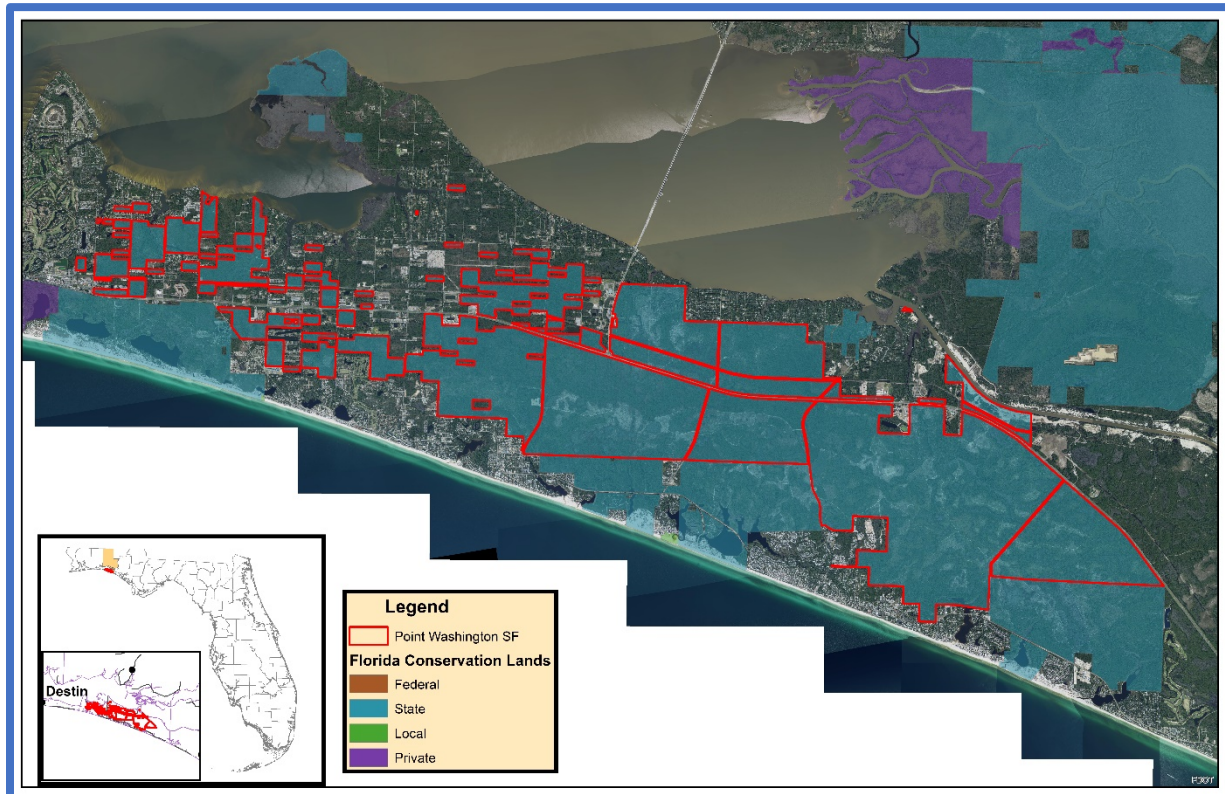
Review Team Members (voting)

- Arthur Stiles, DRP District
- Local Gov't., None
- Max Williams, FWC
- DEP District, None
- Ronda Sutphen, FFS
- Aaron Waits, NFWMD
- Jacob Barrett, Conservation Org.
- Private Land Manager, None

Non-Team Members (attending)

- Keith Singleton, DEP/DSL

Property Map



Overview of Land Management Review Results

Is the property managed for purposes that are compatible with conservation, preservation, or recreation?

Yes = 5, No = 0

Are the management practices, including public access, in compliance with the management plan?

Yes = 5, No = 0

Table 1 shows the average scores received for each applicable category of review. Field Review scores refer to the adequacy of management actions in the field, while Management Plan Review scores refer to adequacy of discussion of these topics in the management plan. Scores range from 1 to 5 with 5 signifying excellence. For a more detailed key to the scores, please see Appendix A.

Consensus Commendations for the Managing Agency

The following commendations resulted from discussion and vote of the review team members:

1. The team commends the Florida Forest Service (FFS) site preparation tactics used in order to preserve and maintain native groundcover species. (5+, 0-)
2. The team commends the FFS for their interagency cooperation. (5+, 0-)
3. The team commends the FFS for managing fire on this landscape while dealing with wildland urban interface and challenging environmental factors. (5+, 0-)
4. The team commends the FFS for their environmental education in the area that was clear cut of the sand pine with longleaf pines to restore the natural species of the area. (5+, 0-)

Consensus Recommendations to the Managing Agency

The following recommendations resulted from a discussion and vote of review team members. The next management plan update should include information about how these recommendations have been addressed:

1. The team recommends that the FFS explore mechanical and chemical treatments to aid in wetland restoration in addition to prescribed fire. (5+, 0-)

Managing Agency Response: Point Washington State Forest staff will continue to search for grant funding possibilities concerning this project.

Field Review Checklist Findings

The following items received high scores on the review team checklist, which indicates that management actions exceeded expectations.

1. **Natural communities, specifically wet flatwoods, mesic flatwoods, scrubby flatwoods, scrub, sandhill, basin swamp, floodplain swamp, dome swamp, salt marsh, and coastal dune lake.**
2. **Listed Species Protection and Preservation, for listed animal and plant species in general, and specifically for reticulated flatwoods salamander, gopher tortoise, white top pitcher plant, and Curtis’s sandgrass**
3. **Natural resource survey/monitoring resources, specifically listed species or their habitat monitoring, other non-game species or their habitat monitoring, fire effects monitoring, other habitat management effects monitoring, and invasive species survey and monitoring.**

Table 5: Results at a glance.

| Major Land Management Categories | Field Review | Management Plan Review |
|---|---------------|------------------------|
| Natural Communities / Forest Management | 4.66 | 4.84 |
| Prescribed Fire / Habitat Restoration | 4.67 | 4.60 |
| Hydrology | 3.80 | 4.00 |
| Imperiled Species | 4.67 | 4.69 |
| Exotic / Invasive Species | 4.50 | 4.55 |
| Cultural Resources | 4.60 | 4.70 |
| Public Access / Education / Law Enforcement | 4.45 | 4.58 |
| Infrastructure / Equipment / Staffing | 4.17 | N/A |
| Color Code (See Appendix A for detail) | | |
| Excellent | Above Average | Below Average |
| | Poor | |

4. **Cultural Resources, specifically cultural resource survey, and protection and preservation.**
5. **Resource management (prescribed fire), specifically area being burned, frequency, and quality.**
6. **Restoration, specifically Sandhill (sand pine removal/longleaf planting).**
7. **Forest management, specifically timber inventory, timber harvesting, reforestation, and site preparation.**
8. **Non-native, invasive, and problem species, specifically prevention and control of plants, animals, and pests/pathogens.**
9. **Hydrologic/geologic function, specifically roads/culverts, and ditches.**
10. **Resource protection, specifically boundary survey, gates and fencing, signage, and law enforcement presence.**
11. **Adjacent property concerns, land use, specifically expanding development, transportation corridors, and inholdings and additions.**
12. **Public access, specifically roads, and parking.**
13. **Environmental education and outreach, specifically wildlife, invasive species, habitat management activities, interpretive facilities and signs, recreational opportunities, and management of visitor impacts.**
14. **Management resources, specifically waste disposal, sanitary facilities, buildings, and equipment.**

Items Requiring Improvement Actions in the Field

The following items received low scores on the review team checklist, which indicates that management actions noted during the Field Review were not considered sufficient (less than 3.0 score on average). Please note that overall good scores do not preclude specific recommendations by the review team requiring remediation. The management plan update should include information on how these items have been addressed:

The review team scores did not identify items requiring improvement actions in the field.

Items Requiring Improvements in the Management Plan

The following items received low scores on the review team checklist, which indicates that the text noted in the Management Plan Review does not sufficiently address this issue (less than 3.0 score on average). Please note that overall good scores do not preclude specific recommendations by the review team requiring remediation. The next management plan update should address the checklist items identified below:

The review team scores did not identify items requiring improvements in the management plan.

Grayton Beach State Park

Managed by: Department of Environmental Protection, Florida Park Service

Acres: 2,171

County: Walton

Purpose(s) for Acquisition: The Florida Board of Parks and Historic Memorials (FBPHM), predecessor in interest to DRP, initially acquired Grayton Beach State Park to develop, maintain and utilize this property for state park and outdoor recreational and educational purposes

Acquisition Program(s): SOC, P2000/CARL

Area Reviewed: Entire Property

Original Acquisition Date: 9/21/64

Last Management Plan Approval Date: 7/8/13

Review Date: 1/29/21

Agency Manager and Key Staff:

- Matthew Allen, Park Manager

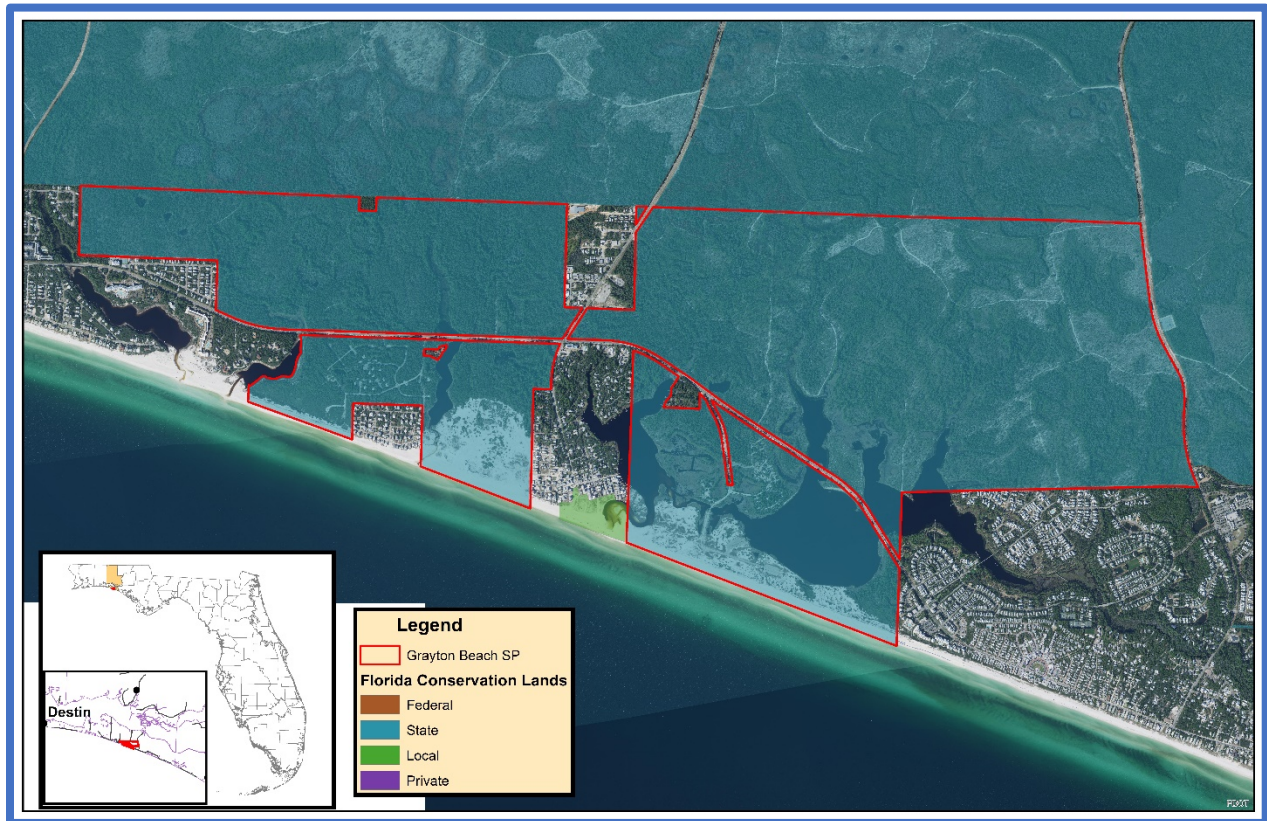
Review Team Members (voting)

- Daryl Hatfield, DRP District
- Local Gov't., None
- Thomas Kuhn, FWC
- DEP District, None
- Ronda Sutphen, FFS
- Aaron Waits, NFWFMD
- Rosalyn Kilcollins, Conservation Org.
- Private Land Manager, None

Non-Team Members (attending)

- Keith Singleton, DEP/DSL

Property Map



Overview of Land Management Review Results

Is the property managed for purposes that are compatible with conservation, preservation, or recreation?

Yes = 5, No = 0

Are the management practices, including public access, in compliance with the management plan?

Yes = 5, No = 0

Table 1 shows the average scores received for each applicable category of review. Field Review scores refer to the adequacy of management actions in the field, while Management Plan Review scores refer to adequacy of discussion of these topics in the management plan. Scores range from 1 to 5 with 5 signifying excellence. For a more detailed key to the scores, please see Appendix A.

Consensus Commendations for the Managing Agency

The following commendations resulted from discussion and vote of the review team members:

1. The team commends the Division of Recreation and Parks (DRP) for continued attention to seasonality of prescribed burns on the area. (5+, 0-)
2. The team commends the DRP for identification and management of the natural communities within the area and the high quality of management of these areas. (5+, 0-)
3. The team commends the DRP for their attention to improving interpretation while making large areas of the park available for resource-based recreation. (5+, 0-)
4. The team commends the DRP for focused efforts to use multiple tools (fire, mechanical, hand removal) to control undesirable hardwood mid-story species (primarily titi) to enhance herbaceous groundcover and abundance of imperiled plants. (5+, 0-)
5. The team commends the DRP for their cooperation with multi-agency imperiled species management efforts. (5+, 0-)
6. The team commends the staff for having an active and supportive citizen support organization. (5+, 0-)

Consensus Recommendations to the Managing Agency

The following recommendations resulted from a discussion and vote of review team members. The next management plan update should include information about how these recommendations have been addressed:

There were no consensus recommendations.

Field Review Checklist Findings

The following items received high scores on the review team checklist, which indicates that management actions exceeded expectations.

Table 6: Results at a glance.

| Major Land Management Categories | Field Review | Management Plan Review | |
|---|---------------|------------------------|------|
| Natural Communities / Forest Management | 4.87 | 4.90 | |
| Prescribed Fire / Habitat Restoration | 4.79 | 5.00 | |
| Hydrology | 4.80 | 4.35 | |
| Imperiled Species | 4.93 | 4.94 | |
| Exotic / Invasive Species | 4.90 | 4.87 | |
| Cultural Resources | 4.90 | 4.90 | |
| Public Access / Education / Law Enforcement | 4.69 | 4.72 | |
| Infrastructure / Equipment / Staffing | 4.33 | N/A | |
| Color Code (See Appendix A for detail) | | | |
| Excellent | Above Average | Below Average | Poor |

1. **Natural communities, specifically beach dune, mesic flatwoods, sandhill, scrub, scrubby flatwoods, wet flatwoods, basin marsh, depression marsh, dome swamp, wet prairie, coastal dune lake, unconsolidated substrate, and basin swamp.**
2. **Listed species, listed animal and plant species in general, and specifically imperiled shorebirds, sea turtles, Choctawhatchee beach mouse, gopher tortoise and commensals, Curtis's sandgrass, white-fringed orchid, rose pogonia, and pitcher plants.**
3. **Natural resources survey/monitoring resources; specifically listed species or their habitat monitoring, other non-game species or their habitat monitoring, fire effects monitoring, other habitat management effects monitoring, and invasive species survey and monitoring.**
4. **Cultural resources, specifically cultural resource survey, and protection and preservation.**
5. **Prescribed fire; specifically area being burned, frequency, and quality.**
6. **Restoration, specifically hydrology, beach dune, seepage slope, wet prairie, sandhill, scrubby flatwoods, and scrub.**
7. **Forest management, specifically timber inventory.**
8. **Non-native, invasive, and problem species, specifically prevention and control of plants, animals, and pests/pathogens.**
9. **Hydro-alteration, specifically roads/culverts, hydro-period alteration, and water level alteration.**
10. **Surface Water Monitoring, specifically quality and quantity.**
11. **Resource protection, specifically boundary survey, gates and fencing, signage, and law enforcement presence.**
12. **Adjacent property concerns, land use, specifically expanding development, inholdings and additions, and surplus lands identified.**
13. **Public access, specifically roads, parking, and boat access.**
14. **Environmental education and outreach, specifically wildlife, invasive species, habitat management activities, interpretive facilities and signs, recreational opportunities, and management of visitor impacts.**
15. **Management resources, specifically waste disposal, sanitary facilities, buildings, and equipment.**

Items Requiring Improvement Actions in the Field

The following items received low scores on the review team checklist, which indicates that management actions noted during the Field Review were not considered sufficient (less than 3.0 score on average). Please note that overall good scores do not preclude specific recommendations by the review team requiring remediation. The management plan update should include information on how these items have been addressed:

The review team scores did not identify items requiring improvement actions in the field.

Items Requiring Improvements in the Management Plan

The following items received low scores on the review team checklist, which indicates that the text noted in the Management Plan Review does not sufficiently address this issue (less than 3.0 score on average). Please note that overall good scores do not preclude specific recommendations by the review team requiring remediation. The next management plan update should address the checklist items identified below:

The review team scores did not identify items requiring improvements in the management plan.

Etoniah Creek State Forest

Managed by: Department of Agriculture and Consumer Services, Florida Forest Service

Acres: 8,691

County: Putnam

Purpose(s) for Acquisition: conserve the Putnam County land as well as fill in gaps in the Greenway; ensure that wildlife such as Florida black bear and scrub jays and plants such as the Etoniah rosemary will have areas in which to live; and provide recreation for the public ranging from hiking trails to fishing, camping, and hunting.

Acquisition Program(s): CARL/P2000/Florida Forever

Original Acquisition Date: 8/3/95

Area Reviewed: Entire Property

Last Management Plan Approval Date: 6/19/15

Review Date: 2/3/21

Agency Manager and Key Staff:

- Stephen Montgomery, Forestry Resource Administrator
- Charlie Pederson, Biologist
- Matt Kennard
- Andrew Usina, Forester

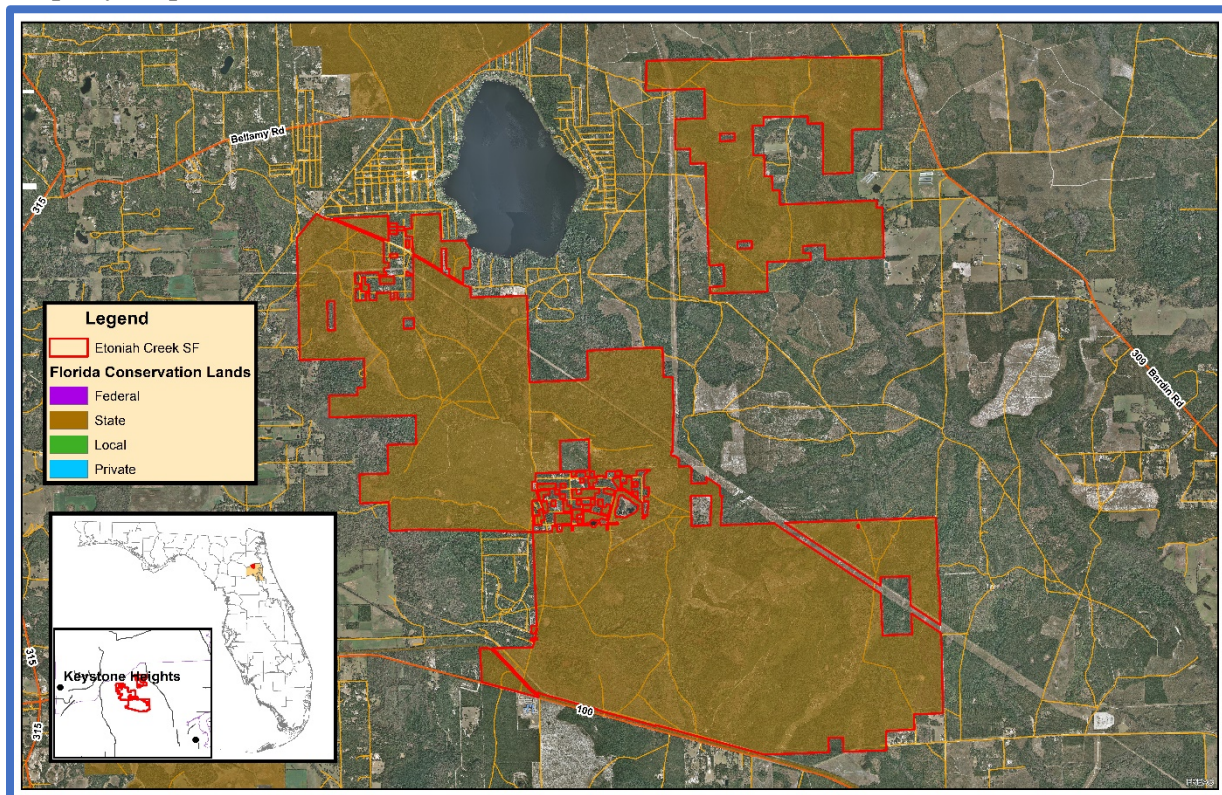
Review Team Members (voting)

- Chris Matson, DRP District
- Ronda Sutphen, FFS
- Tess Simpson, Local Gov't.
- Brent Bachelder, SJRWMD
- Storm Wittenberg, FWC
- Jim Surdick, Conservation Org.
- Carmine Oliverio, DEP District
- Bill Korn, Private Land Manager

Non-Team Members (attending)

- Keith Singleton, DEP/DSL

Property Map



Overview of Land Management Review Results

Is the property managed for purposes that are compatible with conservation, preservation, or recreation?

Yes = 7, No = 0

Are the management practices, including public access, in compliance with the management plan?

Yes = 7, No = 0

Table 1 shows the average scores received for each applicable category of review. Field Review scores refer to the adequacy of management actions in the field, while Management Plan Review scores refer to adequacy of discussion of these topics in the management plan. Scores range from 1 to 5 with 5 signifying excellence. For a more detailed key to the scores, please see Appendix A.

Consensus Commendations for the Managing Agency

The following commendations resulted from discussion and vote of the review team members:

1. The team commends the Florida Forest Service (FFS) for the sand pine removal in the scrub natural community that moved the habitat toward better condition for rare and endemic species. (6+, 0-)
2. The team commends the FFS for using the gas line easement funds to benefit the users and access to the recreational lands of the forest. (6+, 0-)
3. The team commends the FFS on their quality and quantity of prescribed burning on the area. (6+, 0-)
4. The team commends the FFS for their efforts to monitor and manage for the success of the federally listed rosemary species. (6+, 0-)

Consensus Recommendations to the Managing Agency

The following recommendations resulted from a discussion and vote of review team members. The next management plan update should include information about how these recommendations have been addressed:

There were no consensus recommendations.

Field Review Checklist Findings

The following items received high scores on the review team checklist, which indicates that management actions exceeded expectations.

1. **Natural communities, specifically sandhill, mesic flatwoods, xeric hammock, wet flatwoods, floodplain swamp, baygall, dome swamp, sinkhole, upland hardwood forest, depression marsh, and basin swamp.**
2. **Listed Species Protection and Preservation, specifically Etoniah rosemary.**
3. **Natural resource survey/monitoring resources, specifically listed species or their habitat monitoring, fire effects monitoring, and invasive species survey and monitoring.**
4. **Resource management (prescribed fire), specifically area being burned, frequency, and quality.**
5. **Restoration, specifically sandhill (sand pine removal), and scrub.**
6. **Forest management, specifically timber inventory, timber harvesting, reforestation, and site preparation.**

Table 7: Results at a glance.

| Major Land Management Categories | Field Review | Management Plan Review | |
|---|---------------|------------------------|------|
| Natural Communities / Forest Management | 4.45 | 4.45 | |
| Prescribed Fire / Habitat Restoration | 4.46 | 4.27 | |
| Hydrology | 4.29 | 3.85 | |
| Imperiled Species | 3.81 | 3.90 | |
| Exotic / Invasive Species | 4.42 | 4.35 | |
| Cultural Resources | 3.86 | 4.14 | |
| Public Access / Education / Law Enforcement | 4.30 | 4.29 | |
| Infrastructure / Equipment / Staffing | 4.29 | N/A | |
| Color Code (See Appendix A for detail) | | | |
| Excellent | Above Average | Below Average | Poor |

7. **Non-native, invasive, and problem species, specifically prevention and control of plants, animals, and pests/pathogens.**
8. **Hydrologic/geologic function, specifically roads/culverts.**
9. **Ground water monitoring, specifically for water quality and quantity.**
10. **Resource protection, specifically boundary survey, gates and fencing, and signage.**
11. **Adjacent property concerns, land use, specifically inholdings and additions.**
12. **Public access, specifically roads, and parking.**
13. **Environmental education and outreach, specifically habitat management activities, interpretive facilities and signs, recreational opportunities, and management of visitor impacts.**
14. **Management resources, specifically waste disposal, sanitary facilities, buildings, equipment, and funding.**

Items Requiring Improvement Actions in the Field

The following items received low scores on the review team checklist, which indicates that management actions noted during the Field Review were not considered sufficient (less than 3.0 score on average). Please note that overall good scores do not preclude specific recommendations by the review team requiring remediation. The management plan update should include information on how these items have been addressed:

The review team scores did not identify items requiring improvement actions in the field.

Items Requiring Improvements in the Management Plan

The following items received low scores on the review team checklist, which indicates that the text noted in the Management Plan Review does not sufficiently address this issue (less than 3.0 score on average). Please note that overall good scores do not preclude specific recommendations by the review team requiring remediation. The next management plan update should address the checklist items identified below:

The review team scores did not identify items requiring improvements in the management plan.

Welaka State Forest

Managed by: Department of Agriculture and Consumer Services, Florida Forest Service

Acres: 2,287

County: Putnam

Purpose(s) for Acquisition: Acquired under the auspices of the Bankhead Jones Farm Tenant Act.

Acquisition Program(s): N/A

Original Acquisition Date: 5/19/92

Area Reviewed: Entire Property

Last Management Plan Approval Date: 8/15/14

Review Date: 2/4/21

Agency Manager and Key Staff:

- Stephen Montgomery, Forestry Resource Administrator
- Matt Kennard
- Andrew Usina, Forester
- Charlie Pederson, Biologist

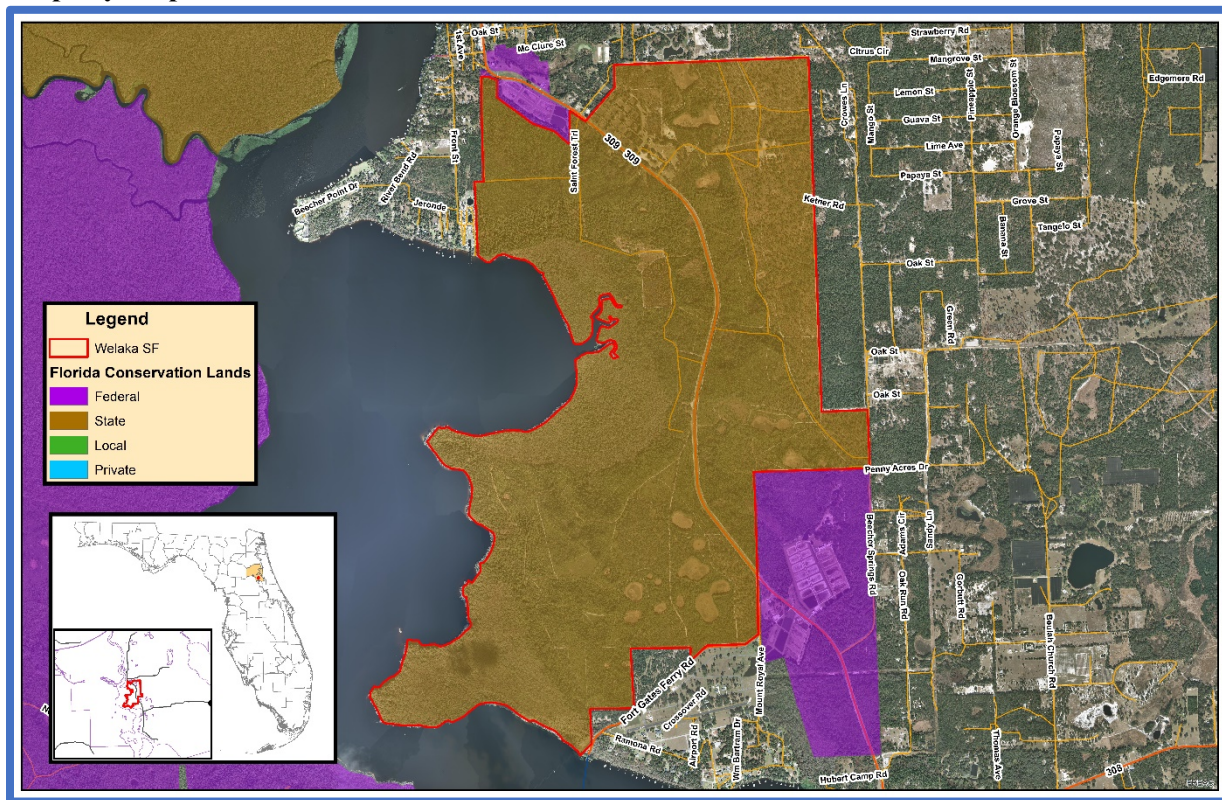
Review Team Members (voting)

- Mark Romagosa, DRP District
- Local Gov't., None
- Tyler Turner, FWC
- Linda Oliva, DEP District
- Ronda Sutphen, FFS
- Sandy Oxenrider, SJRWMD
- Walter Bryant, Conservation Org.
- Private Land Manager, None

Non-Team Members (attending)

- Keith Singleton, DEP/DSL

Property Map



Overview of Land Management Review Results

Is the property managed for purposes that are compatible with conservation, preservation, or recreation?

Yes = 6, No = 0

Are the management practices, including public access, in compliance with the management plan?

Yes = 6, No = 0

Table 1 shows the average scores received for each applicable category of review. Field Review scores refer to the adequacy of management actions in the field, while Management Plan Review scores refer to adequacy of discussion of these topics in the management plan. Scores range from 1 to 5 with 5 signifying excellence. For a more detailed key to the scores, please see Appendix A.

Consensus Commendations for the Managing Agency

The following commendations resulted from discussion and vote of the review team members:

1. The team commends the Florida Forest Service (FFS) staff for the addition of the steps in Mud Spring, for sediment and erosion control in that area, as well as for safe public access to the spring. (6+, 0-)
2. The team commends the FFS staff for their efforts to protect the historic structures on the state forest. (6+, 0-)
3. The team commends the FFS staff for the maintenance and upkeep of all recreational areas and the repurposing of the horse stalls into pavilions for more suitable uses. (6+, 0-)
4. The team commends the FFS staff for their efforts to identify and treat invasive plant as they are found. (6+, 0-)

Consensus Recommendations to the Managing Agency

The following recommendations resulted from a discussion and vote of review team members. The next management plan update should include information about how these recommendations have been addressed:

1. The team recommends more growing season fire in the communities in order to meet the goals of the management plan. (4+, 0-, 2 abstain)

Managing Agency Response: The Florida Forest Service supports transitioning burn units to growing season burns when appropriate to meet our management objectives as outlined in the 10-year resource management plan. All of the acreage burned at WeSF in 2020 was completed in the dormant season, in 2021 69% of the acres burned at WeSF were in the early growing season (March and April). The Florida Forests Service intends to continue this trend in the future to control unwanted woody species and promote a floristic response from desirable groundcover.

Field Review Checklist Findings

The following items received high scores on the review team checklist, which indicates that management actions exceeded expectations.

1. **Natural communities, specifically sandhill, scrubby flatwoods, xeric hammock, mesic flatwoods, baygall, floodplain swamp, depression marsh, flatwoods prairie lake, spring run, floodplain marsh, wet prairie, and alluvial forest.**

Table 8: Results at a glance.

| Major Land Management Categories | Field Review | Management Plan Review | |
|---|---------------|------------------------|------|
| Natural Communities / Forest Management | 4.42 | 4.54 | |
| Prescribed Fire / Habitat Restoration | 4.39 | 4.67 | |
| Hydrology | 4.56 | 4.56 | |
| Imperiled Species | 4.33 | 4.08 | |
| Exotic / Invasive Species | 4.51 | 4.14 | |
| Cultural Resources | 4.50 | 4.25 | |
| Public Access / Education / Law Enforcement | 4.59 | 4.45 | |
| Infrastructure / Equipment / Staffing | 4.67 | N/A | |
| Color Code (See Appendix A for detail) | | | |
| Excellent | Above Average | Below Average | Poor |

2. **Listed Species Protection and Preservation, animals and plants in general, and specifically bald eagle and gopher tortoise.**
3. **Natural resource survey/monitoring resources, specifically listed species or their habitat monitoring, other non-game species or their habitat monitoring, fire effects monitoring, other habitat management effects monitoring, and invasive species survey and monitoring.**
4. **Cultural resources, specifically survey and protection/preservation.**
5. **Resource management (prescribed fire), specifically area being burned, frequency, and quality.**
6. **Forest management, specifically timber inventory, timber harvesting, reforestation, and site preparation.**
7. **Non-native, invasive, and problem species, specifically prevention and control of plants, animals, and pests/pathogens.**
8. **Hydrologic/geologic function, specifically roads/culverts, ditches, and Mudd Spring geologic feature.**
9. **Resource protection, specifically boundary survey, gates and fencing, signage, and law enforcement presence.**
10. **Adjacent property concerns, land use, specifically inholdings and additions.**
11. **Public access, specifically roads, parking, and boat access.**
12. **Environmental education and outreach, specifically wildlife, interpretive facilities and signs, recreational opportunities, and management of visitor impacts.**
13. **Management resources, specifically waste disposal, sanitary facilities, buildings, equipment, staff, and funding.**

Items Requiring Improvement Actions in the Field

The following items received low scores on the review team checklist, which indicates that management actions noted during the Field Review were not considered sufficient (less than 3.0 score on average). Please note that overall good scores do not preclude specific recommendations by the review team requiring remediation. The management plan update should include information on how these items have been addressed:

The review team scores did not identify items requiring improvement actions in the field.

Items Requiring Improvements in the Management Plan

The following items received low scores on the review team checklist, which indicates that the text noted in the Management Plan Review does not sufficiently address this issue (less than 3.0 score on average). Please note that overall good scores do not preclude specific recommendations by the review team requiring remediation. The next management plan update should address the checklist items identified below:

The review team scores did not identify items requiring improvements in the management plan.

Lover's Key State Park

Managed by: Department of Environmental Protection, Florida Park Service

Acres: 1,397

County: Lee

Purpose(s) for Acquisition: to manage the property in such a way as to protect and restore the natural and cultural values of the property and provide the greatest benefit to the citizens of the state.

Acquisition Program(s): SOC

Original Acquisition Date: 5/25/83

Area Reviewed: Entire Property

Last Management Plan Approval Date: 12/9/05

Review Date: 2/24/21

Agency Manager and Key Staff:

- Katie Moses Park Manager
- Bryan Kaczmarek, PSS

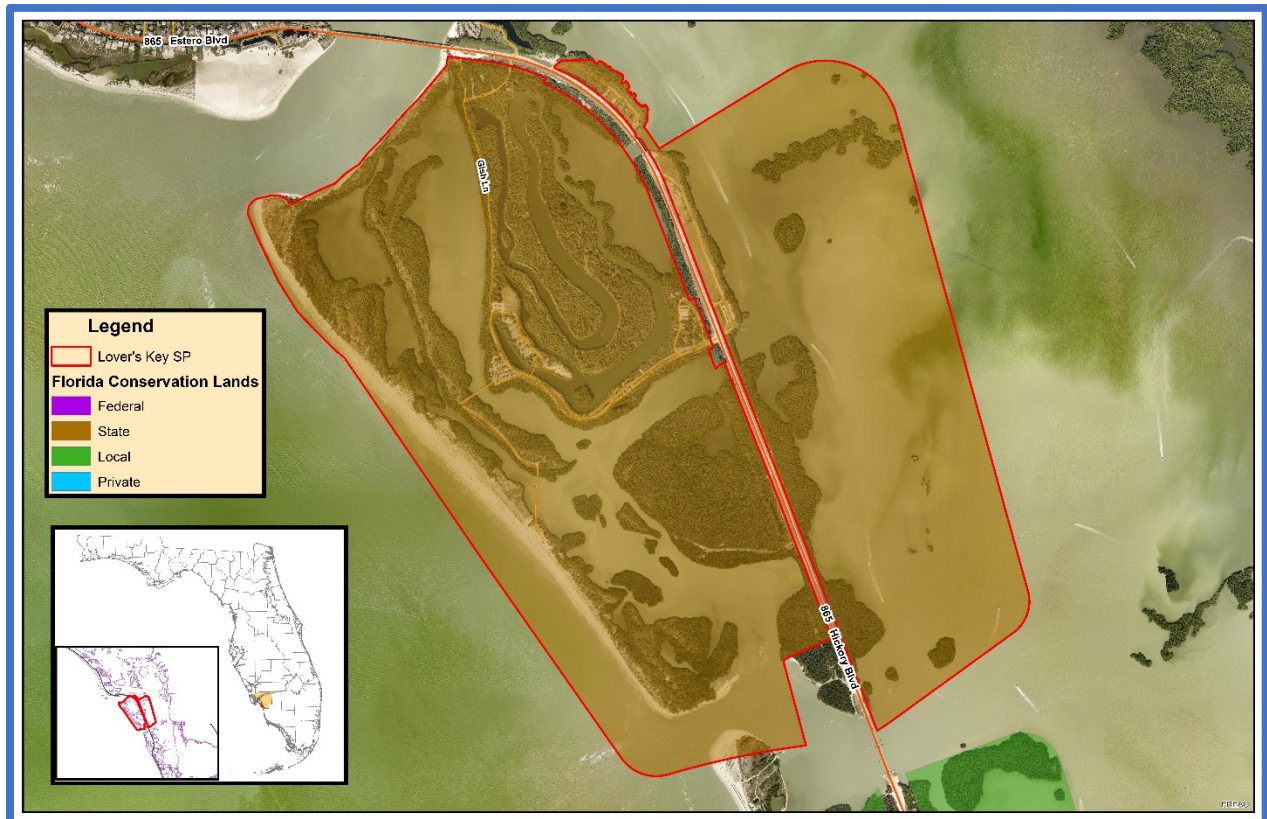
Review Team Members (voting)

- Karen Rogers, DRP District
- Local Gov't., None
- Tyson Dallas, FWC
- Lyndsey Duty, DEP District
- Mike Edwards, FFS
- Joe Bozzo, SFWMD
- Robert Dye, Conservation Org.
- Private Land Manager, None

Non-Team Members (attending)

- Keith Singleton, DEP/DSL

Property Map



Overview of Land Management Review Results
Is the property managed for purposes that are compatible with conservation, preservation, or recreation?

Yes = 5, No = 0

Are the management practices, including public access, in compliance with the management plan?

Yes = 5, No = 0

Table 1 shows the average scores received for each applicable category of review. Field Review scores refer to the adequacy of management actions in the field, while Management Plan Review scores refer to adequacy of discussion of these topics in the management plan. Scores range from 1 to 5 with 5 signifying excellence. For a more detailed key to the scores, please see Appendix A.

Consensus Commendations for the Managing Agency

The following commendations resulted from discussion and vote of the review team members:

1. The team commends the Division of Recreation and Parks (DRP) for efforts in the removal and maintenance of solid waste throughout the park, including providing recycling bins in high use areas. (5+, 0-)
2. The team commends the DRP for efforts in treatment and removal of exotic invasive plants throughout the park. (5+, 0-)

Consensus Recommendations to the Managing Agency

The following recommendations resulted from a discussion and vote of review team members. The next management plan update should include information about how these recommendations have been addressed:

There were no consensus recommendations.

Field Review Checklist Findings

The following items received high scores on the review team checklist, which indicates that management actions exceeded expectations.

1. **Natural communities, specifically beach dune, coastal strand, maritime hammock, marine tidal swamp, marine unconsolidated substrate, seagrass bed, and shell mound.**
2. **Listed species, listed animal and plant species in general, and specifically imperiled shorebirds, sea turtles, manatee and gopher tortoise.**
3. **Natural resources survey/monitoring resources; specifically listed species or their habitat monitoring, other habitat management effects monitoring, and invasive species survey and monitoring.**
4. **Cultural resources, specifically cultural resource survey, and protection and preservation.**
5. **Restoration, specifically dune restoration.**

Table 9: Results at a glance.

| Major Land Management Categories | Field Review | Management Plan Review | |
|---|---------------|------------------------|------|
| Natural Communities / Forest Management | 4.39 | 3.43 | |
| Prescribed Fire / Habitat Restoration | 4.50 | 2.80 | |
| Hydrology | 4.36 | 2.87 | |
| Imperiled Species | 4.65 | 3.00 | |
| Exotic / Invasive Species | 4.42 | 3.17 | |
| Cultural Resources | 5.00 | 4.30 | |
| Public Access / Education / Law Enforcement | 4.49 | 4.00 | |
| Infrastructure / Equipment / Staffing | 3.96 | N/A | |
| Color Code (See Appendix A for detail) | | | |
| Excellent | Above Average | Below Average | Poor |

6. **Non-native, invasive, and problem species, specifically prevention and control of plants and animals, and control of pests/pathogens.**
7. **Hydro-alteration, specifically roads/culverts, ditches, and tidal flushing.**
8. **Surface Water Monitoring, specifically quality.**
9. **Resource protection, specifically boundary survey, gates and fencing, signage, and law enforcement presence.**
10. **Public access, specifically roads, parking, and boat access.**
11. **Environmental education and outreach, specifically wildlife, invasive species, habitat management activities, interpretive facilities and signs, recreational opportunities, and management of visitor impacts.**
12. **Management resources, specifically waste disposal, sanitary facilities, buildings, and equipment.**

Items Requiring Improvement Actions in the Field

The following items received low scores on the review team checklist, which indicates that management actions noted during the Field Review were not considered sufficient (less than 3.0 score on average). Please note that overall good scores do not preclude specific recommendations by the review team requiring remediation. The management plan update should include information on how these items have been addressed:

1. **Natural Resources Survey, specifically sport fish or their habitat monitoring and other habitat management effects monitoring, received a below average score. The review team is asked to evaluate, based on information provided by the managing agency, whether survey and monitoring of the resources or their habitats are sufficient.**

Managing Agency Response:

2. **Management Resources, specifically staff, received a below average score. The review team is asked to evaluate, based on information provided by the managing agency, whether management resources are sufficient.**

Managing Agency Response:

Items Requiring Improvements in the Management Plan

The following items received low scores on the review team checklist, which indicates that the text noted in the Management Plan Review does not sufficiently address this issue (less than 3.0 score on average). Please note that overall good scores do not preclude specific recommendations by the review team requiring remediation. The next management plan update should address the checklist items identified below:

1. **Natural Communities, specifically sea grass bed, received a below average score. This is an indication that the management plan does not sufficiently address current or desired condition and/or future management actions to protect or restore.**

Managing Agency Response:

2. **Listed Species protection and preservation, specifically manatee and gopher tortoise, received below average scores. This is an indication that the management plan does not sufficiently address protection and preservation of listed species.**

Managing Agency Response:

3. **Natural Resources Survey and Monitoring Resources, specifically sport fish or their habitat monitoring, and other non-game species or their habitat monitoring, received below average scores. This is an indication that the management plan does not sufficiently address survey or monitoring.**

Managing Agency Response:

- 4. Restoration, specifically dune restoration, received a below average score. This is an indication that the management plan does not sufficiently address restoration.**

Managing Agency Response:

- 5. Non-native, Invasive & Problem Species, specifically prevention of animals, and prevention and control of pests/pathogens, received below average scores. This is an indication that the management plan does not sufficiently address prevention of invasive species.**

Managing Agency Response:

- 6. Surface Water Monitoring, specifically quality, received a below average score. This is an indication that the management plan does not sufficiently address surface water quality monitoring.**

Managing Agency Response:

- 7. Resource Protection, specifically gates & fencing, received a below average score. This is an indication that the management plan does not sufficiently address resource protection.**

Managing Agency Response:

- 8. Adjacent Property Concerns, specifically dog beach, received a below average score. This is an indication that the management plan does not sufficiently address adjacent property and/or surplus lands.**

Managing Agency Response:

Okaloacoochee Slough State Forest

Managed by: Department of Agriculture and Consumer Services, Florida Forest Service

Acres: 32,349

County: Collier and Hendry

Purpose(s) for Acquisition: To protect areas that are critical to maintaining South Florida’s ecological integrity, and acquiring lands that are necessary for water management, water supply, and the conservation and protection of water resources.

Acquisition Program(s): SOR, P2000/CARL

Original Acquisition Date: 8/3/95

Area Reviewed: Entire Property

Last Management Plan Approval Date: 12/14/12

Review Date: 2/26/21

Agency Manager and Key Staff:

- Michael Weston, Manager

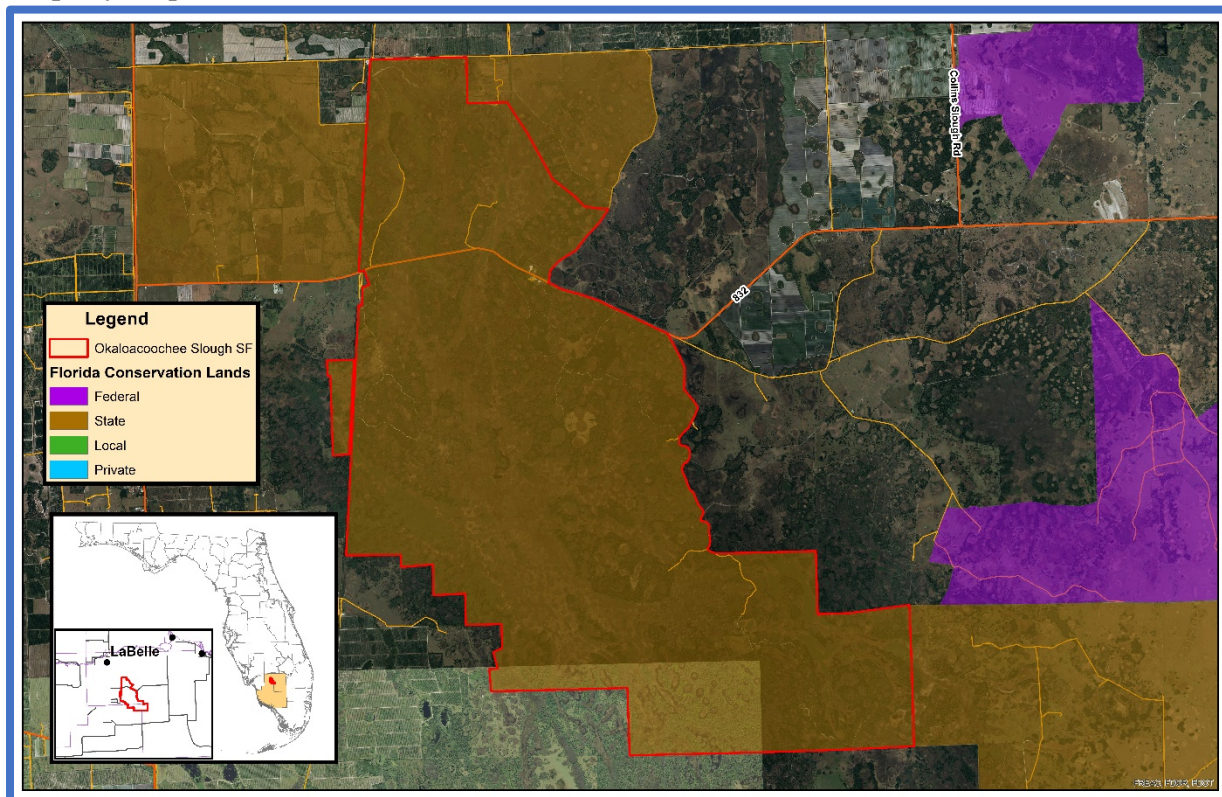
Review Team Members (voting)

- Matthew Hodge, DRP District
- Christal Segura, Local Gov’t.
- Katelyn Horn, FWC
- Tori Gray, DEP District
- Clark Ryals, FFS
- Marie Dessources, SFWMD
- Conservation Org., None
- Private Land Manager, None

Non-Team Members (attending)

- Keith Singleton, DEP/DSL

Property Map



Overview of Land Management Review Results

Is the property managed for purposes that are compatible with conservation, preservation, or recreation?

Yes = 6, No = 0

Are the management practices, including public access, in compliance with the management plan?

Yes = 6, No = 0

Table 1 shows the average scores received for each applicable category of review. Field Review scores refer to the adequacy of management actions in the field, while Management Plan Review scores refer to adequacy of discussion of these topics in the management plan. Scores range from 1 to 5 with 5 signifying excellence. For a more detailed key to the scores, please see Appendix A.

Consensus Commendations for the Managing Agency

The following commendations resulted from discussion and vote of the review team members:

1. The team commends the Florida Forest Service (FFS) for the improved, interpretive and informative signage on the boardwalk and elsewhere in the forest. (6+, 0-)
2. The team commends the FFS staff for the overall level of effort to control and maintain the exotic plant species at the forest. (6+, 0-)
3. The team commends the staff for the condition of the main access roads at the forest. (6+, 0-)

Consensus Recommendations to the Managing Agency

The following recommendations resulted from a discussion and vote of review team members. The next management plan update should include information about how these recommendations have been addressed:

There were no consensus recommendations.

Field Review Checklist Findings

The following items received high scores on the review team checklist, which indicates that management actions exceeded expectations.

1. **Natural communities, specifically mesic flatwoods, wet prairie, basin marsh, depression marsh, slough marsh, strand swamp, dome swamp, mesic hammock, and hydric hammock.**
2. **Listed Species Protection and Preservation, animals and plants in general, and specifically Florida panther.**
3. **Natural resource survey/monitoring resources, specifically fire effects monitoring, other habitat management effects monitoring, and invasive species survey and monitoring.**
4. **Cultural resources, specifically survey and protection/preservation.**
5. **Resource management (prescribed fire), specifically frequency, and quality.**
6. **Restoration, specifically mesic flatwoods restoration.**
7. **Forest management, specifically timber inventory, timber harvesting, reforestation, and site preparation.**
8. **Non-native, invasive, and problem species, specifically prevention and control of plants, and animals, and prevention of pests/pathogens.**

Table 10: Results at a glance.

| Major Land Management Categories | Field Review | Management Plan Review | |
|---|---------------|------------------------|------|
| Natural Communities / Forest Management | 4.50 | 4.38 | |
| Prescribed Fire / Habitat Restoration | 4.33 | 4.39 | |
| Hydrology | 4.06 | 3.32 | |
| Imperiled Species | 4.18 | 4.01 | |
| Exotic / Invasive Species | 4.25 | 4.00 | |
| Cultural Resources | 4.67 | 4.83 | |
| Public Access / Education / Law Enforcement | 4.66 | 4.13 | |
| Infrastructure / Equipment / Staffing | 3.81 | N/A | |
| Color Code (See Appendix A for detail) | | | |
| Excellent | Above Average | Below Average | Poor |

9. Hydrologic/geologic function, specifically roads/culverts, and ditches.
10. Ground water monitoring, specifically for water quantity.
11. Resource protection, specifically boundary survey, gates and fencing, signage, and law enforcement presence.
12. Adjacent property concerns, land use, specifically inholdings and additions.
13. Public access, specifically roads, and parking.
14. Environmental education and outreach, specifically wildlife, invasive species, habitat management activities, interpretive facilities and signs, recreational opportunities, and management of visitor impacts.
15. Management resources, specifically waste disposal, and buildings.

Items Requiring Improvement Actions in the Field

The following items received low scores on the review team checklist, which indicates that management actions noted during the Field Review were not considered sufficient (less than 3.0 score on average). Please note that overall good scores do not preclude specific recommendations by the review team requiring remediation. The management plan update should include information on how these items have been addressed:

The review team scores did not identify items requiring improvement actions in the field.

Items Requiring Improvements in the Management Plan

The following items received low scores on the review team checklist, which indicates that the text noted in the Management Plan Review does not sufficiently address this issue (less than 3.0 score on average). Please note that overall good scores do not preclude specific recommendations by the review team requiring remediation. The next management plan update should address the checklist items identified below:

1. **Surface Water Monitoring, specifically quality, received a below average score. This is an indication that the management plan does not sufficiently address surface water quality monitoring.**
Managing Agency Response: The Florida Forest Service will work with the South Florida Water Management District to plan and implement a surface water quality monitoring plan.
2. **Adjacent Property Concerns, specifically discussion of potential surplus land determination, received a below average score. This is an indication that the management plan does not sufficiently address adjacent property and/or surplus lands.**
Managing Agency Response: The next land management plan update will include a better discussion of adjacent property concerns and potential surplus lands determination. The processes used for determinations will be explained.
3. **Managed area uses, specifically the proposed shooting range, received a below average score. This is an indication that the management plan does not sufficiently address managed area uses.**
Managing Agency Response: No suitable location was found. A shooting range has been determined to be an incompatible use. The shooting range will not be included in the next land management plan update.

John Pennekamp Coral Reef State Park

Managed by: Department of Environmental Protection, Florida Park Service

Acres: 63,839.67

County: Monroe

Purpose(s) for Acquisition: to develop, maintain and utilize this property for state park and outdoor recreational and educational purposes that are compatible with the conservation and protection of the property.

Acquisition Program(s): LATF, P2000/CARL

Original Acquisition Date: 12/3/59

Area Reviewed: Entire Property

Last Management Plan Approval Date: 9/1/04

Review Date: 3/15/21

Agency Manager and Key Staff:

- Paul Rice, Park Manager
- Judy Ferarro, Park Biologist

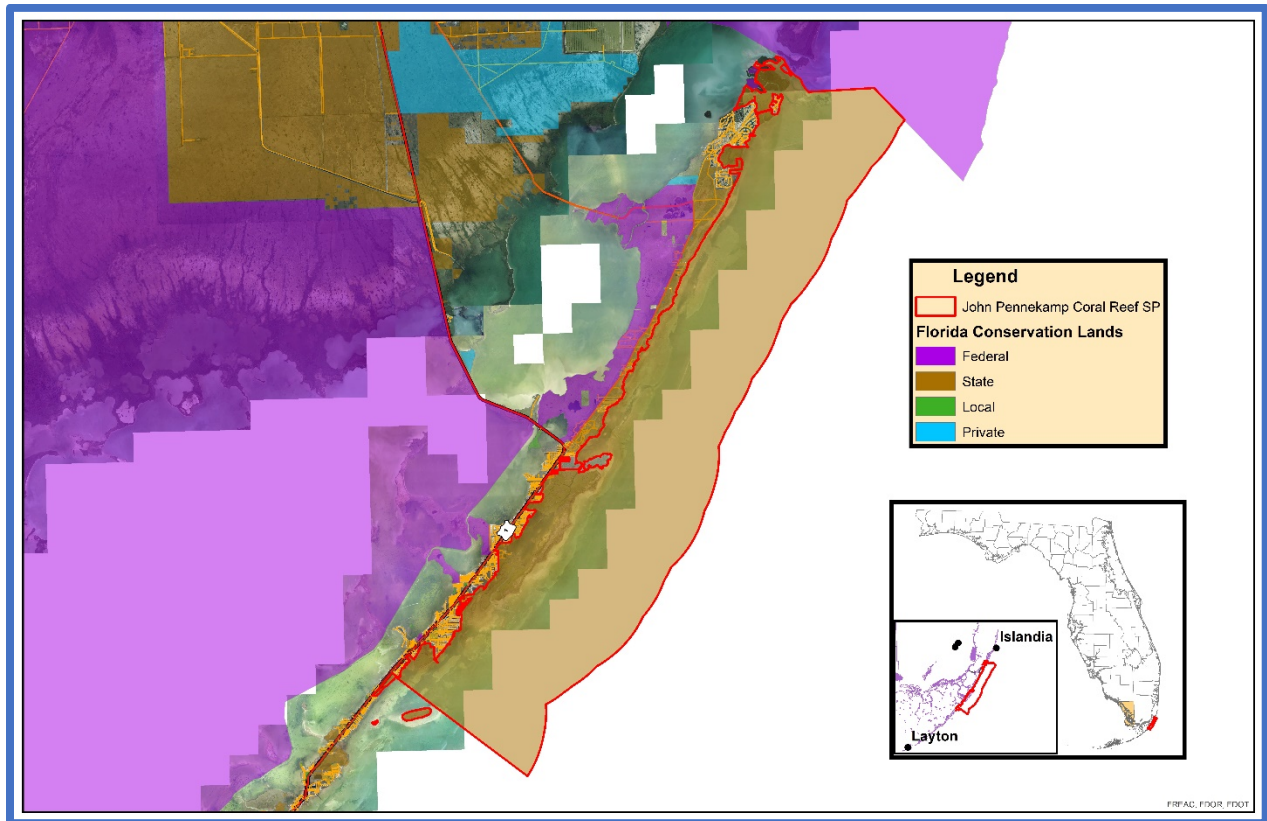
Review Team Members (voting)

- Janice Duquesnel, DRP District
- Mark Torok, FFS
- Jim Duquesnel, Local Gov't.
- Tiffany Howard, SFWMD
- Jeannette Parker, FWC
- Sandra Vardaman, Conservation Org.
- Brian Cumbie, DEP District
- Private Land Manager, None

Non-Team Members (attending)

- Keith Singleton, DEP/DSL

Property Map



Overview of Land Management Review Results

Is the property managed for purposes that are compatible with conservation, preservation, or recreation?

Yes = 6, No = 0

Are the management practices, including public access, in compliance with the management plan?

Yes = 6, No = 0

Table 1 shows the average scores received for each applicable category of review. Field Review scores refer to the adequacy of management actions in the field, while Management Plan Review scores refer to adequacy of discussion of these topics in the management plan. Scores range from 1 to 5 with 5 signifying excellence. For a more detailed key to the scores, please see Appendix A.

Consensus Commendations for the Managing Agency

The following commendations resulted from discussion and vote of the review team members:

There were no consensus commendations.

Consensus Recommendations to the Managing Agency

The following recommendations resulted from a discussion and vote of review team members. The next management plan update should include information about how these recommendations have been addressed:

1. The team recommends and requests that a Fish and Wildlife Commission liaison be assigned to work with park staff to better coordinate park activity. (6+, 0-, 1 abstain)

Managing Agency Response: Disagree. Park staff continue to work closely with current Florida Fish and Wildlife Conservation Commission’s Division of Law Enforcement and other local law enforcement agencies to protect resources as necessary.

2. The team recommends that, with the level of visitation and the with the natural resources, the park needs more staff. (7+, 0-)

Managing Agency Response: Additional staff can only be assigned to this or other park units if they are appropriated by the Legislature or reassigned from other units. Funding is determined annually by the Florida Legislature.

Field Review Checklist Findings

The following items received high scores on the review team checklist, which indicates that management actions exceeded expectations.

1. Natural communities, specifically Keys tidal rock barren, rockland hammock, marine composite and consolidated substrates, marine tidal swamp, marine unconsolidated substrate, and Keys cactus barren.
2. Listed species, listed animal and plant species in general, and specifically Schaus’ swallowtail, cactus species, and mahogany mistletoe.
3. Natural resources survey/monitoring resources; specifically listed species or their habitat monitoring, and invasive species survey and monitoring.

Table 11: Results at a glance.

| Major Land Management Categories | Field Review | Management Plan Review |
|---|---------------|------------------------|
| Natural Communities / Forest Management | 3.98 | 4.55 |
| Prescribed Fire / Habitat Restoration | 3.92 | 4.50 |
| Hydrology | 4.33 | 4.00 |
| Imperiled Species | 4.13 | 4.09 |
| Exotic / Invasive Species | 3.96 | 3.97 |
| Cultural Resources | 4.33 | 4.58 |
| Public Access / Education / Law Enforcement | 4.13 | 4.18 |
| Infrastructure / Equipment / Staffing | 3.31 | N/A |
| Color Code (See Appendix A for detail) | | |
| Excellent | Above Average | Below Average |
| | | Poor |

4. **Cultural resources, specifically cultural resource survey, and protection and preservation.**
5. **Restoration, specifically upland restoration.**
6. **Non-native, invasive, and problem species, specifically prevention and control of plants, and control of animals.**
7. **Hydro-alteration, specifically roads/culverts.**
8. **Resource protection, specifically boundary survey.**
9. **Adjacent property concerns, specifically inholdings and additions.**
10. **Public access, specifically roads, parking, and boat access.**
11. **Environmental education and outreach, specifically wildlife, invasive species, habitat management activities, interpretive facilities and signs, recreational opportunities, and management of visitor impacts.**
12. **Management resources, specifically waste disposal, and sanitary facilities.**

Items Requiring Improvement Actions in the Field

The following items received low scores on the review team checklist, which indicates that management actions noted during the Field Review were not considered sufficient (less than 3.0 score on average). Please note that overall good scores do not preclude specific recommendations by the review team requiring remediation. The management plan update should include information on how these items have been addressed:

1. **The maintenance condition of the Natural Communities, specifically marine coral reef, received a below average score. The review team is asked to evaluate, based on their perspective, what percent of the natural community is in maintenance condition. The scores range from 1 to 5, with 1 being 0-20% in maintenance condition, 2 being 21-40%, 3 being 41-60%, 4 being 61-80% and 5 being 81-100%.**

Managing Agency Response: The Park and staff are currently partnering with other Federal and State agencies and NGO's to monitor and evaluate the health of the submerged resources in the Park, including corals. These partnerships are part of a much larger effort to identify the ongoing stressors to coral health and the development a recovery plan for the species.

2. **Management Resources, specifically buildings, staff, and funding, received below average scores. The review team is asked to evaluate, based on information provided by the managing agency, whether management resources are sufficient.**

Managing Agency Response: The Division will consider these recommendations. Division funding is appropriated annually by the Florida Legislature. This funding is allocated at the Division and District levels in order to best meet annual operational, staffing, and facility needs. Any deemed increase in Division Budget/staffing will follow the established legislative budget request process.

Items Requiring Improvements in the Management Plan

The following items received low scores on the review team checklist, which indicates that the text noted in the Management Plan Review does not sufficiently address this issue (less than 3.0 score on average). Please note that overall good scores do not preclude specific recommendations by the review team requiring remediation. The next management plan update should address the checklist items identified below:

The review team scores did not identify items requiring improvements in the management plan.

Lignumvitae Key Botanical State Park

Managed by: Department of Environmental Protection, Florida Park Service

Acres: 10,817.65

County: Monroe

Purpose(s) for Acquisition: to develop, maintain and utilize this property for state park and outdoor recreational and educational purposes that are compatible with the conservation and protection of the property.

Acquisition Program(s): LATF, P2000/CARL

Original Acquisition Date: 3/2/71

Area Reviewed: Entire Property

Last Management Plan Approval Date: 4/23/12

Review Date: 3/17/21

Agency Manager and Key Staff:

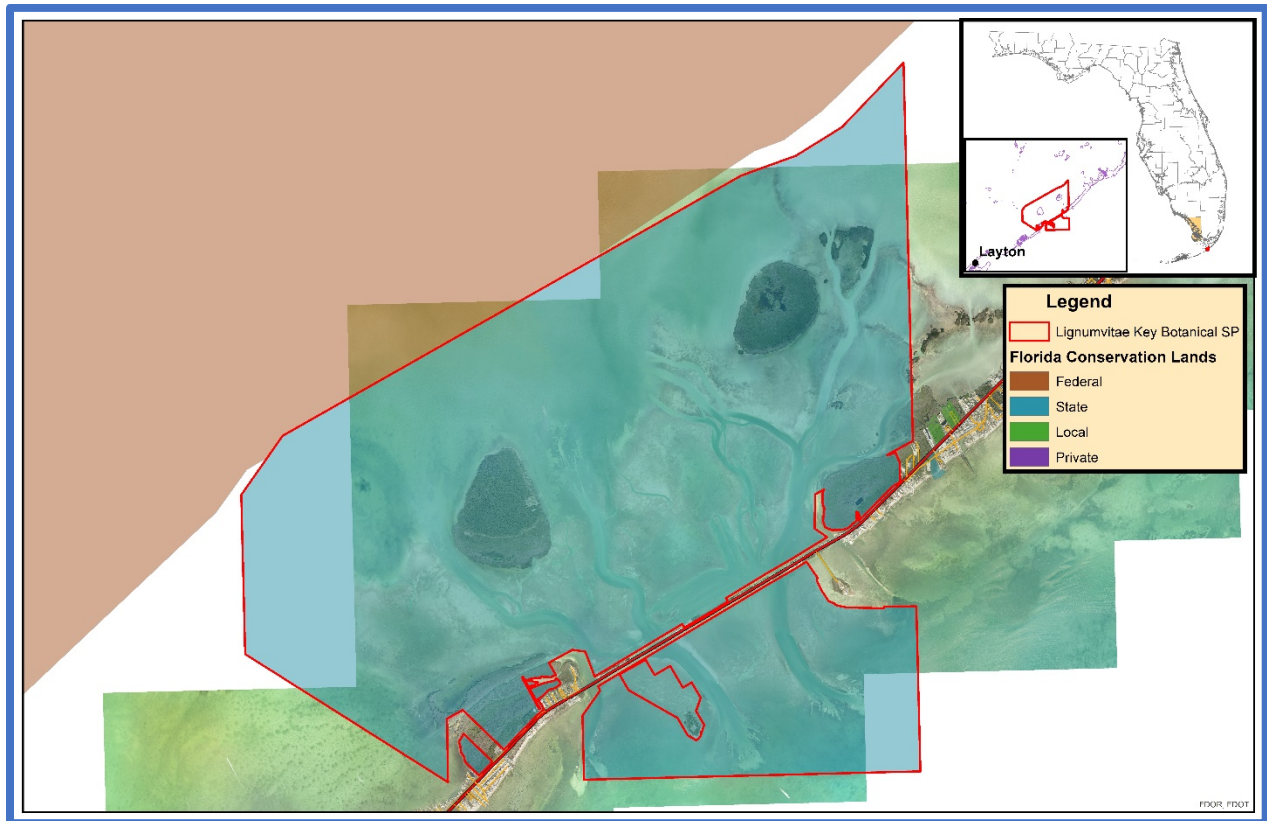
- Lu Dodson, Park Manager
- Becky Schneider, Park Biologist
- Mark Torok, FFS
- Janice Duquesnel, DRP District
- Tiffany Howard, SFWMD
- Sandra Vardaman, Conservation Org.
- Beth Bergh, Local Gov't.
- Marisa Magrino, Private Land Manager
- Jeannette Parker, FWC
- Katie Teyshak, DEP District

Review Team Members (voting)

Non-Team Members (attending)

- Keith Singleton, DEP/DSL

Property Map



Overview of Land Management Review Results

Is the property managed for purposes that are compatible with conservation, preservation, or recreation?

Yes = 8, No = 0

Are the management practices, including public access, in compliance with the management plan?

Yes = 8, No = 0

Table 1 shows the average scores received for each applicable category of review. Field Review scores refer to the adequacy of management actions in the field, while Management Plan Review scores refer to adequacy of discussion of these topics in the management plan. Scores range from 1 to 5 with 5 signifying excellence. For a more detailed key to the scores, please see Appendix A.

Consensus Commendations for the Managing Agency

The following commendations resulted from discussion and vote of the review team members:

1. The review team commends the Division of Recreation and Parks (DRP) for maintaining excellent condition of all natural and cultural resources and restoring submerged resources with extremely limited staff and funding. (8+, 0-)
2. The review team commends the Florida Park Service (FPS) outreach to law enforcement to help them be better educated on the marine resources. (8+, 0-)
3. The review team commends the FPS specifically on their comprehensive efforts in ongoing seagrass restoration. (8+, 0-)
4. The review team commends the park staff for development of interpretive materials. (8+, 0-)
5. The review team commends the park staff for the ongoing exotic plant and animal removals within the park. (8+, 0-)
6. The review team commends the park staff for efforts being made to protect the archaeological and historical resources. (8+, 0-)

Consensus Recommendations to the Managing Agency

The following recommendations resulted from a discussion and vote of review team members. The next management plan update should include information about how these recommendations have been addressed:

1. The team recommends the park acquire a landing craft, i.e., a shallow draft work boat for park operations. (8+, 0-)

Managing Agency Response: The District supports this recommendation. A landing craft would help park staff conduct seagrass restoration, buoy maintenance, and make it easier to move larger equipment and supplies from the land base office to Lignumvitae Key.

2. The team recommends that no plants or outside material be brought onto Lignumvitae Key State Park. (8+, 0-)

Table 12: Results at a glance.

| Major Land Management Categories | Field Review | Management Plan Review |
|---|---------------|------------------------|
| Natural Communities / Forest Management | 4.79 | 4.88 |
| Prescribed Fire / Habitat Restoration | 4.75 | 4.88 |
| Hydrology | N/A | N/A |
| Imperiled Species | 4.55 | 4.70 |
| Exotic / Invasive Species | 4.60 | 4.54 |
| Cultural Resources | 4.75 | 4.81 |
| Public Access / Education / Law Enforcement | 4.32 | 4.56 |
| Infrastructure / Equipment / Staffing | 3.83 | N/A |
| Color Code (See Appendix A for detail) | | |
| Excellent | Above Average | Below Average |
| | | Poor |

Managing Agency Response: Agree. To prevent the spread of the invasive new guinea flatworm and other non-native species, no plants or outside material (i.e. topsoil or mulch) should be brought onto Lignumvitae Key. In addition, park management should take every effort to disinfect equipment that is being transported to the island (such as chippers or UTV's) that could potentially spread invasive species on the island.

3. The team recommends that DRP consider increasing the number of full-time positions to improve management of the cultural and natural resources and increase visitor services. (8+, 0-)

Managing Agency Response: Additional staff can only be assigned to this or other park units if they are appropriated by the Legislature or reassigned from other units. Funding is determined annually by the Florida Legislature.

4. The team recommends that DRP coordinate with FWC to increase law enforcement presence in an effort to better protect both upland and submerged resources. (8+, 0-)

Managing Agency Response: Law enforcement assistance must be obtained through the Florida Fish and Wildlife Conservation Commission's Division of Law Enforcement or from a local law enforcement agency. Park staff will request additional presence to protect resources as necessary.

Field Review Checklist Findings

The following items received high scores on the review team checklist, which indicates that management actions exceeded expectations.

1. **Natural communities, specifically coastal berm, Keys cactus barren, rockland hammock, Keys tidal rock barren, mangrove swamp, marine composite, consolidated, and unconsolidated substrates, and marine seagrass beds.**
2. **Listed species, listed animal and plant species in general, and specifically corals, Florida purple wing, Schaus' swallowtail, and Keys tree cactus.**
3. **Natural resources survey/monitoring resources; specifically sportfish or their habitat monitoring, listed species or their habitat monitoring, and invasive species survey and monitoring.**
4. **Cultural resources, specifically cultural resource survey, and protection and preservation.**
5. **Restoration, specifically seagrass restoration.**
6. **Non-native, invasive, and problem species, specifically prevention and control of plants, animals, and pests/pathogens.**
7. **Resource protection, specifically boundary survey, gates and fencing, and signage.**
8. **Adjacent property concerns, specifically expanding development, encroachments, and inholdings and additions.**
9. **Environmental education and outreach, specifically wildlife, invasive species, habitat management activities, interpretive facilities and signs, recreational opportunities, and management of visitor impacts.**
10. **Management resources, specifically waste disposal, sanitary facilities, buildings, and equipment.**

Items Requiring Improvement Actions in the Field

The following items received low scores on the review team checklist, which indicates that management actions noted during the Field Review were not considered sufficient (less than 3.0 score on average). Please note that overall good scores do not preclude specific recommendations by the review team requiring remediation. The management plan update should include information on how these items have been addressed:

1. **Management Resources, specifically staff, received a below average score. The review team is asked to evaluate, based on information provided by the managing agency, whether management resources are sufficient.**

Managing Agency Response: Additional staff can only be assigned to this or other park units if they are appropriated by the Legislature or reassigned from other units. Funding is determined annually by the Florida Legislature.

Items Requiring Improvements in the Management Plan

The following items received low scores on the review team checklist, which indicates that the text noted in the Management Plan Review does not sufficiently address this issue (less than 3.0 score on average). Please note that overall good scores do not preclude specific recommendations by the review team requiring remediation. The next management plan update should address the checklist items identified below:

The review team scores did not identify items requiring improvements in the management plan.

Dagny Johnson Key Largo Hammock State Park

Managed by: Department of Environmental Protection, Florida Park Service

Acres: 2,805.20

County: Monroe

Purpose(s) for Acquisition: to develop, maintain and utilize this property for state park and outdoor recreational and educational purposes that are compatible with the conservation and protection of the property.

Acquisition Program(s): P2000/CARL

Original Acquisition Date: 7/26/82

Area Reviewed: Entire Property

Last Management Plan Approval Date: 4/19/19

Review Date: 3/18/21

Agency Manager and Key Staff:

- Paul Rice, Park Manager
- Judy Ferarro, Park Biologist

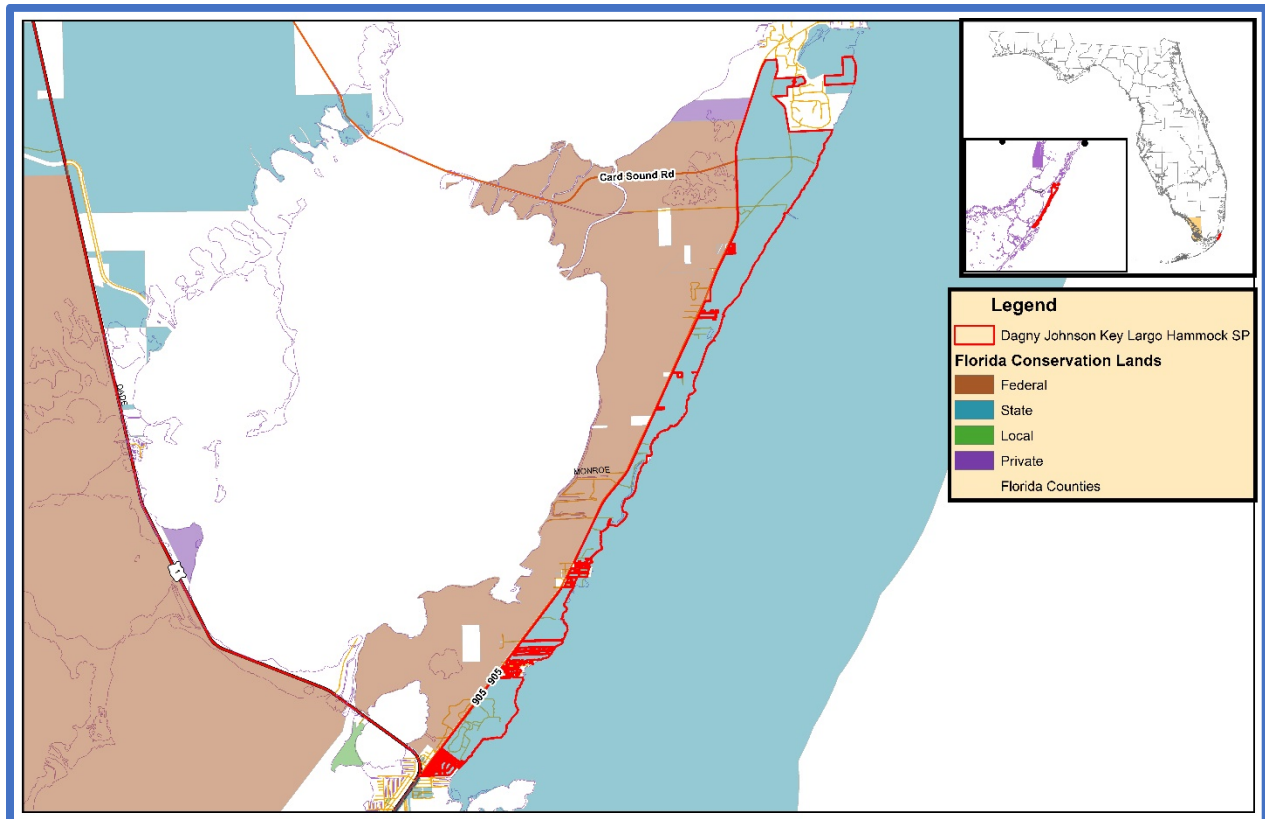
Review Team Members (voting)

- Janice Duquesnel, DRP District
- Jim Duquesnel, Local Gov't.
- Jeannette Parker, FWC
- Beau Daigneault, DEP District
- Mark Torok, FFS
- Christine Stylianos, SFWMD
- Sandra Vardaman, Conservation Org.
- Private Land Manager, None

Non-Team Members (attending)

- Keith Singleton, DEP/DSL

Property Map



Overview of Land Management Review Results

Is the property managed for purposes that are compatible with conservation, preservation, or recreation?

Yes = 7, No = 0

Are the management practices, including public access, in compliance with the management plan?

Yes = 7, No = 0

Table 1 shows the average scores received for each applicable category of review. Field Review scores refer to the adequacy of management actions in the field, while Management Plan Review scores refer to adequacy of discussion of these topics in the management plan. Scores range from 1 to 5 with 5 signifying excellence. For a more detailed key to the scores, please see Appendix A.

Consensus Commendations for the Managing Agency

The following commendations resulted from discussion and vote of the review team members:

1. The team commends the state park staff for their restoration at Fort Bougainville and Carysfort Yacht Club, and continuation of the long-term restoration projects. (7+, 0-)
2. The team commends the staff for their plan to improve ADA access of the main entrance to the park. (7+, 0-)

Consensus Recommendations to the Managing Agency

The following recommendations resulted from a discussion and vote of review team members. The next management plan update should include information about how these recommendations have been addressed:

1. The team recommends the management plan address the Havana cluster vine and climbing vine fern in more detail in the management plan. (7+, 0-)

Managing Agency Response: The Park concurs with the recommendation. The protection and preservation of listed species, particularly Havana clustervine and climbing vine fern, will be more thoroughly addressed in the next management plan update.

2. The team recommends that the management plan include a wish list of research targeted for resource management that this property needs for researchers to choose from. (5+, 1-, 1 abstain)

Managing Agency Response: Disagree. The current plan does identify some research needs. Moreover, a comprehensive list is not feasible for the plan as research needs are fluid and updates to the plan only occur on a 10-year rotation. When the Park is solicited by researchers, our staff work with them to focus their research on current Park needs.

3. The team recommends that the park needs to identify the impacts on native wildlife caused by the New Guinea flatworm. (7+, 0-)

Managing Agency Response: The Park currently works with Florida Fish & Wildlife Conservation Commission (FWC) and their researchers on removal and monitoring efforts for the New Guinea flatworm.

Table 13: Results at a glance.

| Major Land Management Categories | Field Review | Management Plan Review | |
|---|---------------|------------------------|------|
| Natural Communities / Forest Management | 4.33 | 4.58 | |
| Prescribed Fire / Habitat Restoration | 4.92 | 4.60 | |
| Hydrology | 3.83 | 3.77 | |
| Imperiled Species | 4.10 | 4.10 | |
| Exotic / Invasive Species | 3.87 | 4.12 | |
| Cultural Resources | 3.79 | 4.00 | |
| Public Access / Education / Law Enforcement | 3.50 | 3.95 | |
| Infrastructure / Equipment / Staffing | 2.98 | N/A | |
| Color Code (See Appendix A for detail) | | | |
| Excellent | Above Average | Below Average | Poor |

4. The team recommends that staffing levels at Key Largo Hammock State Park be restored to historic levels allocated by the Legislature when the park was established. (6+, 0-, 1 abstain)

Managing Agency Response: Additional staff can only be assigned to this or other park units if they are appropriated by the Legislature or reassigned from other units. Funding is determined annually by the Florida Legislature.

5. The team recommends that park staff stabilize the radar towers before they deteriorate to the point of no return (6+, 0-, 1 abstain)

Managing Agency Response: The Park has and will continue to seek funding for the preservation of these structures which is identified in the current management plan.

Field Review Checklist Findings

The following items received high scores on the review team checklist, which indicates that management actions exceeded expectations.

1. **Natural communities, specifically coastal berm, rockland hammock, and mangrove swamp.**
2. **Listed species, listed animal and plant species in general, and specifically endangered rodents, Schaus' swallowtail, mahogany mistletoe, and semaphore cactus.**
3. **Natural resources survey/monitoring resources; specifically sport fish or their habitat monitoring, listed species or their habitat monitoring, other non-game species or their habitat monitoring, and invasive species survey and monitoring.**
4. **Restoration, specifically uplands and wetlands restoration.**
5. **Non-native, invasive, and problem species, specifically prevention and control of plants, and control of animals.**
6. **Hydro-alteration, specifically roads/culverts.**
7. **Resource protection, specifically boundary survey.**
8. **Public access, specifically roads.**
9. **Environmental education and outreach, specifically recreational opportunities.**

Items Requiring Improvement Actions in the Field

The following items received low scores on the review team checklist, which indicates that management actions noted during the Field Review were not considered sufficient (less than 3.0 score on average). Please note that overall good scores do not preclude specific recommendations by the review team requiring remediation. The management plan update should include information on how these items have been addressed:

1. **Management Resources, specifically sanitary facilities, buildings, and staff, received below average scores. The review team is asked to evaluate, based on information provided by the managing agency, whether management resources are sufficient.**

Managing Agency Response: The Division will consider these recommendations. Division funding is appropriated annually by the Florida Legislature. This funding is allocated at the Division and District levels in order to best meet annual operational, staffing, and facility needs. Any deemed increase in Division Budget/staffing will follow the established legislative budget request process.

Items Requiring Improvements in the Management Plan

The following items received low scores on the review team checklist, which indicates that the text noted in the Management Plan Review does not sufficiently address this issue (less than 3.0 score on average). Please note that overall good scores do not preclude specific recommendations by the review team requiring remediation. The next management plan update should address the checklist items identified below:

1. **Listed Species protection and preservation, specifically climbing vine fern, received a below average score. This is an indication that the management plan does not sufficiently address protection and preservation of listed species.**

Managing Agency Response: The protection and preservation of listed species, particularly climbing vine fern, will be more thoroughly addressed in the next plan update. The current management plan was reviewed by the relevant agencies and was in full compliance with Chapters 253 and 259, F.S., and Chapter 18-2, F.A.C., when it was approved by ARC.

Bald Point State Park

Managed by: Department of Environmental Protection, Florida Park Service

Acres: 4,875.49

County: Franklin

Purpose(s) for Acquisition: to manage the property in such a way as to protect and restore the natural and cultural values of the property and provide the greatest benefit to the citizens of the state.

Acquisition Program(s): P2000/CARL

Original Acquisition Date: 8/30/99

Area Reviewed: Entire Property

Last Management Plan Approval Date: 4/21/06

Review Date: 4/21/21

Agency Manager and Key Staff:

- Kristin Ebersol, Park Manager
- Christopher Whittle, District Biologist
- Summer Waters, District Biologist

Review Team Members (voting)

- Daryl Hatfield, DRP District
- Local Gov't., None
- Mike Sisson, FWC
- Mark Gillman, DEP District
- Ronda Sutphen, FFS
- Tyler MacMillan, NFWFMD
- David Roddenberry, Conservation Org.
- Private Land Manager, None

Non-Team Members (attending)

- Keith Singleton, DEP/DSL
- Deborah Burr, DEP/DSL
- James Parker, DEP/DSL
- Bryan Shoaf, DEP/DSL

Property Map



Overview of Land Management Review Results

Is the property managed for purposes that are compatible with conservation, preservation, or recreation?

Yes = 6, No = 0

Are the management practices, including public access, in compliance with the management plan?

Yes = 6, No = 0

Table 1 shows the average scores received for each applicable category of review. Field Review scores refer to the adequacy of management actions in the field, while Management Plan Review scores refer to adequacy of discussion of these topics in the management plan. Scores range from 1 to 5 with 5 signifying excellence. For a more detailed key to the scores, please see Appendix A.

Consensus Commendations for the Managing Agency

The following commendations resulted from discussion and vote of the review team members:

1. The team commends the state park staff on their ability to apply fire on the landscape despite the challenges with the inholdings and adjacent properties. (6+, 0-)
2. The team commends the park staff for thinking comprehensively about conservation and environmental issues and public uses at the park and managing to accomplish their goals with the resources available. (6+, 0-)
3. The team commends the park staff for their sea turtle restoration project which consists of removal of the old seawall and road. (6+, 0-)

Consensus Recommendations to the Managing Agency

The following recommendations resulted from a discussion and vote of review team members. The next management plan update should include information about how these recommendations have been addressed:

There were no consensus recommendations.

Field Review Checklist Findings

The following items received high scores on the review team checklist, which indicates that management actions exceeded expectations.

1. **Natural communities, specifically beach dune, maritime hammock, scrub, scrubby flatwoods, basin marsh, baygall, depression marsh, wet flatwoods, flatwoods lake/marsh lake, and salt marsh.**
2. **Listed species, listed animal and plant species in general, and specifically sea turtles, shorebirds, gopher tortoise, Godfrey’s blazing star, and yucca gloriosa.**
3. **Natural resources survey/monitoring resources; specifically listed species or their habitat monitoring, fire effects monitoring, other non-game species or their habitat monitoring, and invasive species survey and monitoring.**
4. **Cultural resources, specifically survey and protection/preservation.**
5. **Prescribed fire, specifically area being burned, frequency, and quality.**
6. **Restoration, specifically flatwoods restoration.**

Table 14: Results at a glance.

| Major Land Management Categories | Field Review | Management Plan Review | |
|---|---------------|------------------------|------|
| Natural Communities / Forest Management | 4.76 | 4.67 | |
| Prescribed Fire / Habitat Restoration | 4.72 | 4.72 | |
| Hydrology | 4.45 | 4.37 | |
| Imperiled Species | 4.79 | 4.64 | |
| Exotic / Invasive Species | 4.56 | 4.36 | |
| Cultural Resources | 4.83 | 4.67 | |
| Public Access / Education / Law Enforcement | 4.62 | 4.48 | |
| Infrastructure / Equipment / Staffing | 3.72 | N/A | |
| Color Code (See Appendix A for detail) | | | |
| Excellent | Above Average | Below Average | Poor |

- 7. Forest management, specifically timber inventory, and timber harvesting**
- 8. Non-native, invasive, and problem species, specifically prevention and control of plants, animals, and pests/pathogens.**
- 9. Hydro-alteration, specifically roads/culverts, and ditches.**
- 10. Resource protection, specifically boundary survey, gates and fencing, signage, and law enforcement presence.**
- 11. Adjacent property concerns, specifically expanding development, and inholdings and additions**
- 12. Public access, specifically roads, parking, and boat access.**
- 13. Environmental education and outreach, specifically wildlife, invasive species, habitat management activities, interpretive facilities and signs, recreational opportunities, and management of visitor impacts.**
- 14. Management Resources, specifically waste disposal and sanitary facilities.**

Items Requiring Improvement Actions in the Field

The following items received low scores on the review team checklist, which indicates that management actions noted during the Field Review were not considered sufficient (less than 3.0 score on average). Please note that overall good scores do not preclude specific recommendations by the review team requiring remediation. The management plan update should include information on how these items have been addressed:

The review team scores did not identify items requiring improvement actions in the field.

Items Requiring Improvements in the Management Plan

The following items received low scores on the review team checklist, which indicates that the text noted in the Management Plan Review does not sufficiently address this issue (less than 3.0 score on average). Please note that overall good scores do not preclude specific recommendations by the review team requiring remediation. The next management plan update should address the checklist items identified below:

The review team scores did not identify items requiring improvement actions in the management plan.

Alfred B. Maclay Gardens State Park

Managed by: Department of Environmental Protection - Division of Recreation and Parks.

Acres: 1,169.00

County: Leon

Purpose(s) for Acquisition: The State of Florida (“State”) acquired Alfred B. Maclay Gardens State Park to maintain the property as a public state park.

Acquisition Program(s): CARL/P2000

Original Acquisition Date: 3/31/53

Area Reviewed: Entire Property

Last Management Plan Approval Date: 2/27/14

Review Date: 4/23/21

Agency Manager and Key Staff:

- Stephanie McDonald, Manager
- Christopher Wilson
- Summer Waters
- Kasha Wagner

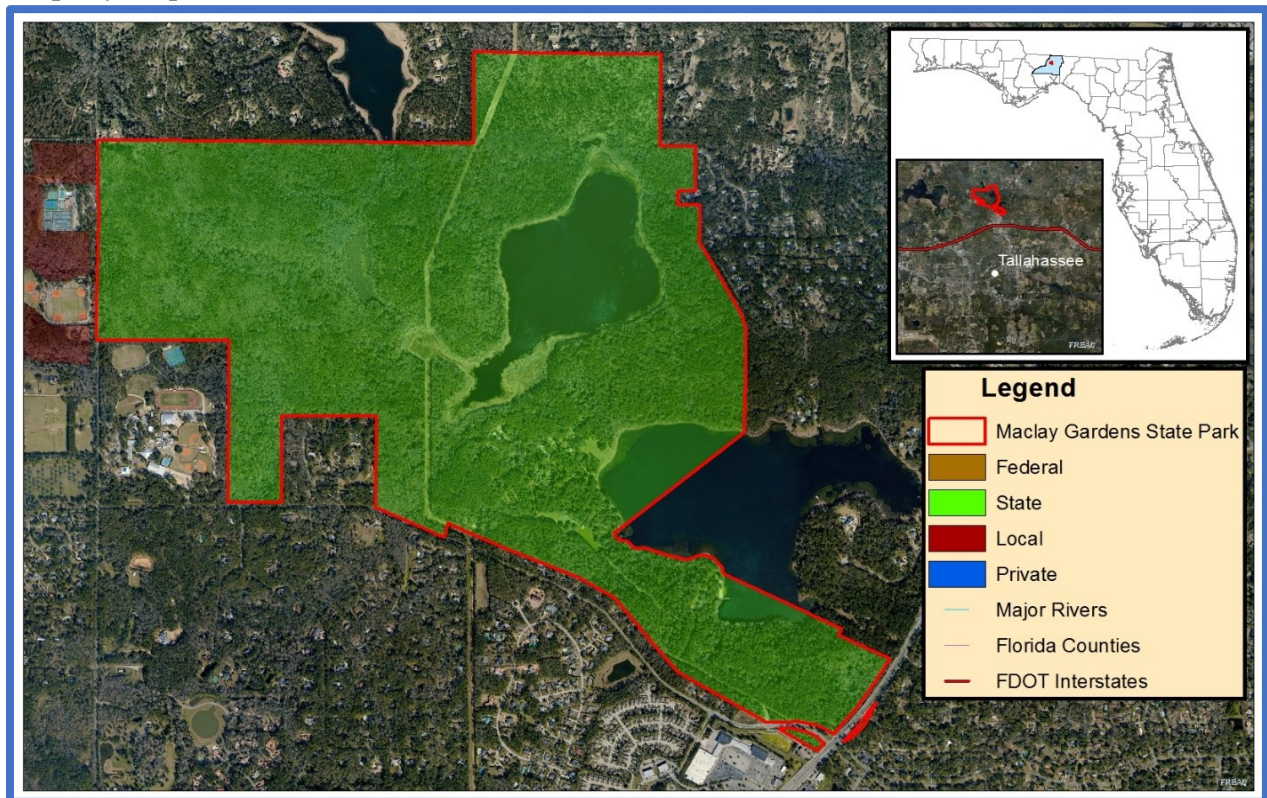
Review Team Members (voting)

- Arthur Stiles, DRP District
- Local Gov’t., None
- Emily Evans, FWC
- Kim Siedl, DEP District
- Ronda Sutphen, FFS
- Tyler MacMillan, NFWFMD
- Rosalyn Kilcollins, Conservation Org.
- Private Land Manager, None

Non-Team Members (attending)

- James Parker, DEP/DSL
- Shelly Wayte, FFS
- Michel Fuller, DEP District

Property Map



Overview of Land Management Review Results

Is the property managed for purposes that are compatible with conservation, preservation, or recreation?

Yes = 6, No = 0

Are the management practices, including public access, in compliance with the management plan?

Yes = 6, No = 0

Table 1 shows the average scores received for each applicable category of review. Field Review scores refer to the adequacy of management actions in the field, while Management Plan Review scores refer to adequacy of discussion of these topics in the management plan. Scores range from 1 to 5 with 5 signifying excellence. For a more detailed key to the scores, please see Appendix A.

Table 15: Results at a glance.

| Major Land Management Categories | Field Review | Management Plan Review |
|---|---------------|------------------------|
| Natural Communities / Forest Management | 4.29 | 4.33 |
| Prescribed Fire / Habitat Restoration | N/A | N/A |
| Hydrology | 4.92 | 4.83 |
| Imperiled Species | 4.83 | 4.78 |
| Exotic / Invasive Species | 4.83 | 4.67 |
| Cultural Resources | 5.00 | 5.00 |
| Public Access / Education / Law Enforcement | 4.92 | 4.73 |
| Infrastructure / Equipment / Staffing | 4.47 | N/A |
| Color Code (See Appendix A for detail) | | |
| Excellent | Above Average | Below Average |
| | | Poor |

Consensus Commendations for the Managing Agency

The following commendations resulted from discussion and vote of the review team members:

1. The team commends DRP for their knowledge and caring for the management of the park. (6+, 0-)
2. The team commends DRP for staff expertise and ability in answering questions during the site visit and review of the management plan. (6+, 0-)
3. The team commends DRP on the management of the gardens and maintaining the historical aspect of the park. (6+, 0-)
4. The team commends DRP for working with volunteers for the removal and management of invasive species. (6+, 0-)

Consensus Recommendations to the Managing Agency

The following recommendations resulted from a discussion and vote of review team members. The next management plan update should include information about how these recommendations have been addressed:

There were no consensus recommendations.

Field Review Checklist Findings

The following items received high scores on the review team checklist, which indicates that management actions exceeded expectations.

1. Natural communities, specifically upland hardwood forest, basin swamp, bottomland forest, clastic upland lake, sinkhole lake, and seepage stream.
2. Listed species, animals and plants in general, and specifically bay starvine, and slender naiad.
3. Natural resource survey/monitoring resources, specifically listed species or their habitat monitoring, other nongame species of their habitat monitoring, other habitat management effects monitoring, and invasive species survey and monitoring.

4. **Cultural Resources, specifically cultural resource survey, and protection and preservation.**
5. **Non-native, invasive, and problem species, specifically prevention and control of plants, animals, and pests/pathogens.**
6. **Hydro-alteration, specifically roads/culverts and ditches.**
7. **Surface Water Monitoring, specifically quality.**
8. **Resource protection, specifically boundary survey, gates and fencing, signage, and law enforcement presence.**
9. **Adjacent property concerns, specifically inholdings/additions.**
10. **Public access, specifically roads, parking, and boat access.**
11. **Environmental education and outreach, specifically wildlife, invasive species, interpretive facilities and signs, recreational opportunities, and management of visitor impacts.**
12. **Management resources, specifically waste disposal, sanitary facilities, buildings and equipment.**

Items Requiring Improvement Actions in the Field

The following items received low scores on the review team checklist, which indicates that management actions noted during the Field Review were not considered sufficient (less than 3.0 score on average). Please note that overall good scores do not preclude specific recommendations by the review team requiring remediation. The management plan update should include information on how these items have been addressed:

The review team scores did not identify items requiring improvement actions in the field.

Items Requiring Improvements in the Management Plan

The following items received low scores on the review team checklist, which indicates that the text noted in the Management Plan Review does not sufficiently address this issue (less than 3.0 score on average). Please note that overall good scores do not preclude specific recommendations by the review team requiring remediation. The next management plan update should address the checklist items identified below:

The review team scores did not identify items requiring improvement actions in the management plan.

Apalachicola River Wildlife and Environmental Area

Managed by: Florida Fish and Wildlife Conservation Commission

Acres: 63,257

County: Franklin and Gulf

Purpose(s) for Acquisition: To protect the floodplain of the lower Apalachicola River.

Acquisition Program(s): EEL, CARL/P2000, Florida Forever

Original Acquisition Date: 1972

Area Reviewed: Entire Property

Last Management Plan Approval Date: 12/2/14

Review Date: 5/12/21

Agency Manager and Key Staff:

- Catherine Ricketts, Manager
- Phil Manor, Regional Biologist
- Clint Peters

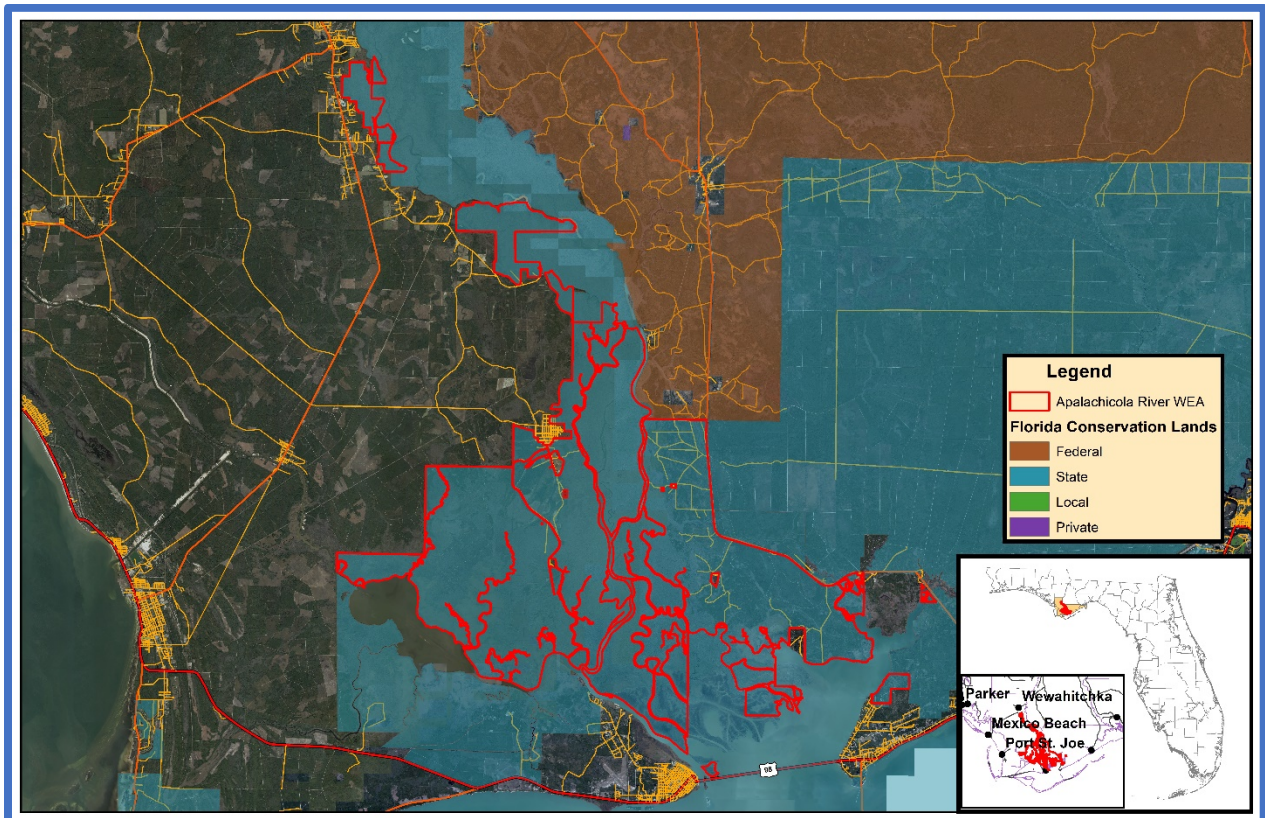
Review Team Members (voting)

- Daryl Hatfield, DRP District
- Ronda Sutphen, FFS
- Mark Curenton, Local Gov't.
- Coakley Taylor, NFWFMD
- Diana Pepe, FWC
- Sandy Tedder, Conservation Org.
- DEP District, None
- Private Land Manager, None

Non-Team Members (attending)

- Keith Singleton, DEP/DSL
- Dylan Haase, FWC
- James Parker, DEP/DSL

Property Map



Overview of Land Management Review Results

Is the property managed for purposes that are compatible with conservation, preservation, or recreation?

Yes = 6, No = 0

Are the management practices, including public access, in compliance with the management plan?

Yes = 6, No = 0

Table 1 shows the average scores received for each applicable category of review. Field Review scores refer to the adequacy of management actions in the field, while Management Plan Review scores refer to adequacy of discussion of these topics in the management plan. Scores range from 1 to 5 with 5 signifying excellence. For a more detailed key to the scores, please see Appendix A.

Consensus Commendations for the Managing Agency

The following commendations resulted from discussion and vote of the review team members:

1. The team commends the manager for the comprehensive approach to habitat management and restoration for wildlife, imperiled plants and the whole natural communities environment. (6+, 0-)

Consensus Recommendations to the Managing Agency

The following recommendations resulted from a discussion and vote of review team members. The next management plan update should include information about how these recommendations have been addressed:

There were no consensus recommendations.

Field Review Checklist Findings

The following items received high scores on the review team checklist, which indicates that management actions exceeded expectations.

1. **Natural communities, specifically alluvial forest, alluvial river, basin swamp, baygall, blackwater stream, bottomland forest, depression marsh, dome swamp, floodplain marsh, floodplain swamp, hydric hammock, mesic flatwoods, mesic hammock, salt marsh, sandhill, scrubby flatwoods, upland hardwood forest, wet flatwoods and wet prairie.**
2. **Listed species, listed animal and plant species in general, and specifically red cockaded woodpeckers, and frosted flatwoods salamander.**
3. **Natural resources survey/monitoring resources; specifically sport fish or their habitat monitoring, listed species or their habitat monitoring, other non-game species or their habitat monitoring, fire effects monitoring, other habitat management effects monitoring, and invasive species survey and monitoring.**
4. **Cultural resources, specifically cultural resource survey, and protection and preservation.**
5. **Prescribed fire, specifically area being burned, frequency and quality.**
6. **Restoration, specifically pine plantation to mesic/wet flatwoods/wet prairie, groundcover restoration (Ruderal site / Saul Creek Unit), hydrology restoration, and ephemeral wetlands.**
7. **Forest management, specifically timber inventory, timber harvesting, reforestation/afforestation and site preparation.**

Table 16: Results at a glance.

| Major Land Management Categories | Field Review | Management Plan Review |
|---|---------------|------------------------|
| Natural Communities / Forest Management | 4.96 | 4.83 |
| Prescribed Fire / Habitat Restoration | 4.86 | 4.81 |
| Hydrology | 4.89 | 4.72 |
| Imperiled Species | 5.00 | 4.96 |
| Exotic / Invasive Species | 4.94 | 4.83 |
| Cultural Resources | 4.92 | 4.83 |
| Public Access / Education / Law Enforcement | 4.91 | 4.78 |
| Infrastructure / Equipment / Staffing | 4.70 | N/A |
| Color Code (See Appendix A for detail) | | |
| Excellent | Above Average | Below Average |
| | | Poor |

- 8. Non-native, invasive, and problem species, specifically prevention and control of plants, animals, and pests/pathogens.**
- 9. Hydro-alteration, specifically roads and culverts, ditches, hydro-period alteration, and water level alteration.**
- 10. Ground water monitoring, specifically quality and quantity.**
- 11. Surface water monitoring, specifically quality and quantity.**
- 12. Resource protection, specifically boundary survey, gates and fencing, signage and law enforcement presence.**
- 13. Adjacent property concerns, specifically inholdings and additions.**
- 14. Public access, specifically roads, parking, and boat access.**
- 15. Environmental education and outreach, specifically wildlife, invasive species, habitat management activities, interpretive facilities and signs, recreational opportunities, and management of visitor impacts.**
- 16. Management resources, specifically waste disposal, sanitary facilities, . buildings, equipment, staff and funding.**

Items Requiring Improvement Actions in the Field

The following items received low scores on the review team checklist, which indicates that management actions noted during the Field Review were not considered sufficient (less than 3.0 score on average). Please note that overall good scores do not preclude specific recommendations by the review team requiring remediation. The management plan update should include information on how these items have been addressed:

The review team scores did not identify items requiring improvement actions in the field.

Items Requiring Improvements in the Management Plan

The following items received low scores on the review team checklist, which indicates that the text noted in the Management Plan Review does not sufficiently address this issue (less than 3.0 score on average). Please note that overall good scores do not preclude specific recommendations by the review team requiring remediation. The next management plan update should address the checklist items identified below:

The review team scores did not identify items requiring improvements in the management plan.

Dr. Julian G. Bruce St. George Island State Park

Managed by: Department of Environmental Protection, Florida Park Service

Acres: 2,024.00

County: Franklin

Purpose(s) for Acquisition: The original property was donated to the Trustees for use for public purpose only.

Acquisition Program(s): LATF, EEL, CARL/P2000

Original Acquisition Date: 4/17/63

Area Reviewed: Entire Property

Last Management Plan Approval Date: 8/19/16

Review Date: 5/14/21

Agency Manager and Key Staff:

- Joshua Hodson, Park Manager
- Christopher Whittle, District Biologist
- Summer Waters, District Biologist

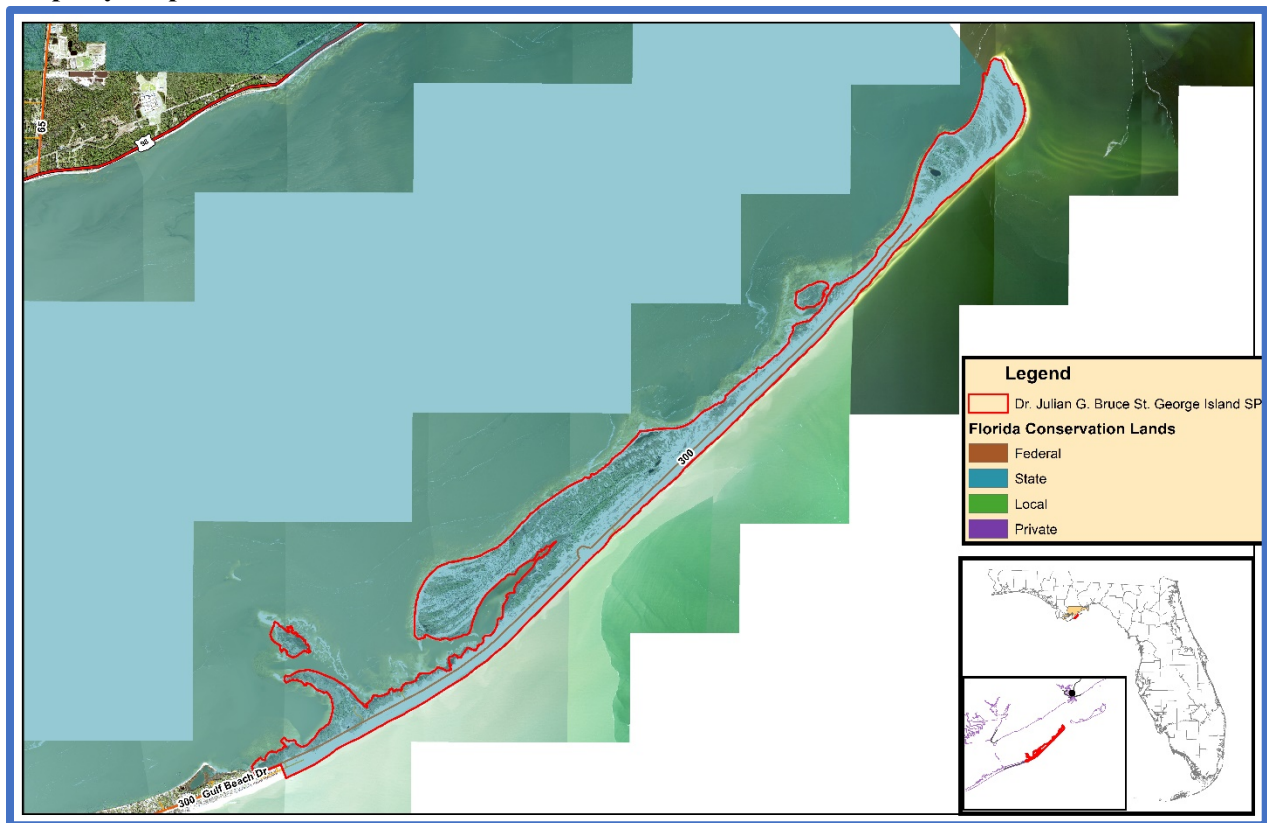
Review Team Members (voting)

- Arthur Stiles, DRP District
- Mark Curenton, Local Gov't.
- Thomas Kuhn, FWC
- DEP District, None
- Ronda Sutphen, FFS
- John Crowe, NFWFMD
- Rebecca Dolan, Conservation Org.
- Private Land Manager, None

Non-Team Members (attending)

- Keith Singleton, DEP/DSL
- Shelly Wayte, FFS

Property Map



Overview of Land Management Review Results

Is the property managed for purposes that are compatible with conservation, preservation, or recreation?

Yes = 6, No = 0

Are the management practices, including public access, in compliance with the management plan?

Yes = 6, No = 0

Table 1 shows the average scores received for each applicable category of review. Field Review scores refer to the adequacy of management actions in the field, while Management Plan Review scores refer to adequacy of discussion of these topics in the management plan. Scores range from 1 to 5 with 5 signifying excellence. For a more detailed key to the scores, please see Appendix A.

Consensus Commendations for the Managing Agency

The following commendations resulted from discussion and vote of the review team members:

1. The team commends the state park staff on the innovative thinking in turning the challenges of Hurricane Michael into opportunities, and adapting the interpretive programs when the old ways were not an option. (6+, 0-)
2. The team commends the park staff for the ability to manage for visitor impacts, such as closing off vehicular traffic to the east end for the protection of habitat of the ground nesting birds. (6+, 0-)
3. The team commends the park staff for their work collaborating with their partners, such as FWC, FNAI, ANERR, and FSU. (6+, 0-)

Consensus Recommendations to the Managing Agency

The following recommendations resulted from a discussion and vote of review team members. The next management plan update should include information about how these recommendations have been addressed:

There were no consensus recommendations.

Field Review Checklist Findings

The following items received high scores on the review team checklist, which indicates that management actions exceeded expectations.

1. **Natural communities, specifically beach dune, coastal grassland, scrubby flatwoods, wet flatwoods, basin marsh, salt marsh, coastal dune lake, estuarine unconsolidated substrate and marine unconsolidated substrate.**
2. **Listed species, listed animal and plant species in general, and specifically shorebirds and sea turtles.**
3. **Natural resources survey/monitoring resources; specifically sport fish or their habitat monitoring, listed species or their habitat monitoring, other non-game species or their habitat monitoring, fire effects monitoring, other habitat management effects monitoring, and invasive species survey and monitoring.**
4. **Cultural resources, specifically survey and protection/preservation.**
5. **Prescribed fire, specifically area being burned, frequency, and quality.**
6. **Non-native, invasive, and problem species, specifically prevention and control of plants, animals, and pests/pathogens.**

Table 17: Results at a glance.

| Major Land Management Categories | Field Review | Management Plan Review |
|---|---------------|------------------------|
| Natural Communities / Forest Management | 4.08 | 4.37 |
| Prescribed Fire / Habitat Restoration | 4.78 | 4.89 |
| Hydrology | 5.00 | 4.92 |
| Imperiled Species | 4.92 | 5.00 |
| Exotic / Invasive Species | 4.94 | 4.94 |
| Cultural Resources | 4.92 | 5.00 |
| Public Access / Education / Law Enforcement | 4.98 | 4.98 |
| Infrastructure / Equipment / Staffing | 4.61 | N/A |
| Color Code (See Appendix A for detail) | | |
| Excellent | Above Average | Below Average |
| | | Poor |

7. **Hydro-alteration, specifically roads/culverts.**
8. **Surface water monitoring, specifically quantity and quantity**
9. **Resource protection, specifically boundary survey, gates and fencing, signage, and law enforcement presence.**
10. **Public access, specifically roads, parking, and boat access.**
11. **Environmental education and outreach, specifically wildlife, invasive species, habitat management activities, interpretive facilities and signs, recreational opportunities, and management of visitor impacts.**
12. **Management Resources, specifically waste disposal and sanitary facilities, buildings, equipment, and staff.**

Items Requiring Improvement Actions in the Field

The following items received low scores on the review team checklist, which indicates that management actions noted during the Field Review were not considered sufficient (less than 3.0 score on average). Please note that overall good scores do not preclude specific recommendations by the review team requiring remediation. The management plan update should include information on how these items have been addressed:

The review team scores did not identify items requiring improvement actions in the field.

Items Requiring Improvements in the Management Plan

The following items received low scores on the review team checklist, which indicates that the text noted in the Management Plan Review does not sufficiently address this issue (less than 3.0 score on average). Please note that overall good scores do not preclude specific recommendations by the review team requiring remediation. The next management plan update should address the checklist items identified below:

The review team scores did not identify items requiring improvement actions in the management plan.

Payne's Prairie Preserve State Park

Managed by: Department of Environmental Protection, Florida Park Service

Acres: 21,654.00

County: Alachua

Purpose(s) for Acquisition: To protect the water resources and endangered and threatened species of the wet prairie/marsh ecosystem.

Acquisition Program(s): LATF, CARL/P2000, Florida Forever **Original Acquisition Date:** 9/29/1970

Area Reviewed: Entire Property

Last Management Plan Approval Date: 12/18/2013

Review Date: 6/2/2021

Agency Manager and Key Staff:

- Donald Forgione, Park Manager
- Keith Morin, Park Biologist
- Heather Goston, Assistant Park Manager

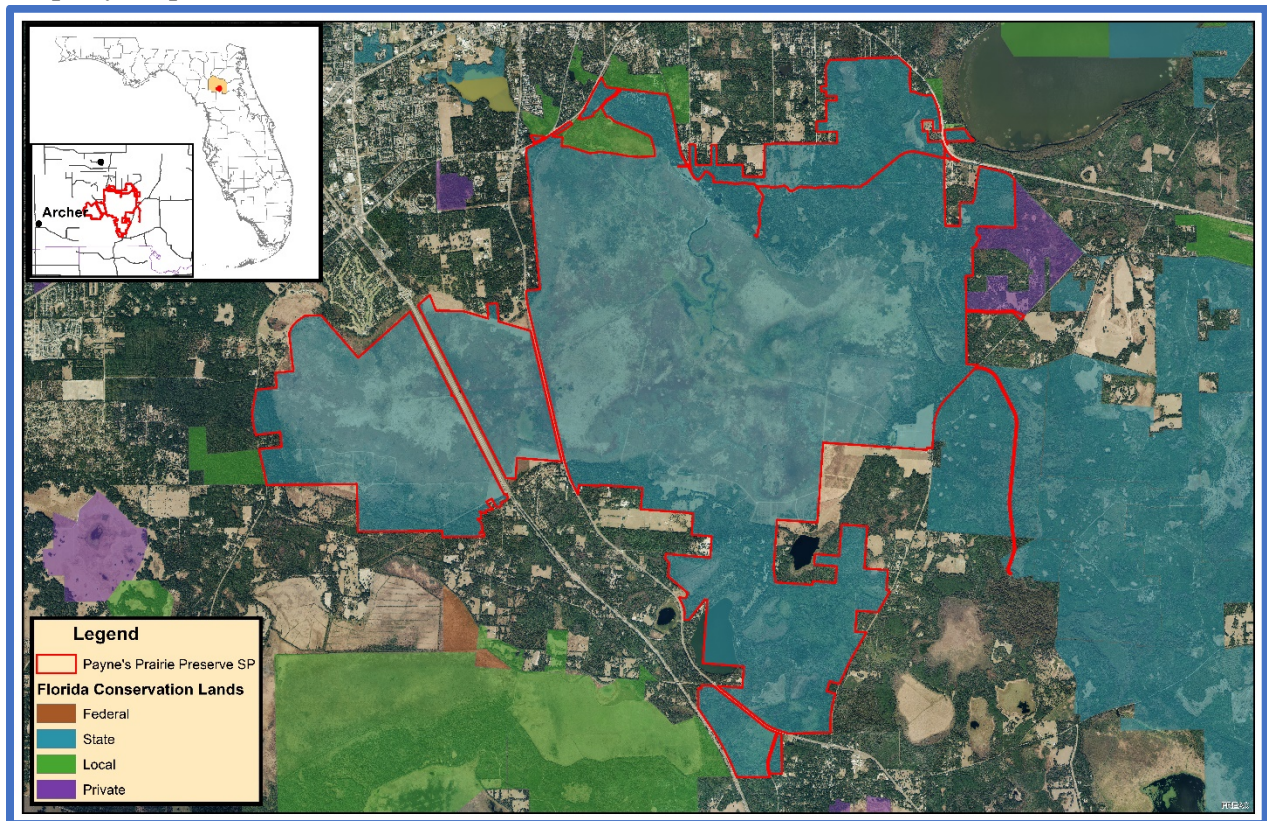
Review Team Members (voting)

- Dan Pearson, DRP District
- Ryan Kennelly, Local Gov't.
- Ginger Feagle, FWC
- Jason Neumann, DEP District
- Shelly Wayte, FFS
- Brent Bachelder, SJRWMD
- Jim Surdick, Conservation Org.
- Grace Howell, Private Land Manager

Non-Team Members (attending)

- Keith Singleton, DEP/DSL

Property Map



Overview of Land Management Review Results

Is the property managed for purposes that are compatible with conservation, preservation, or recreation?

Yes = 8, No = 0

Are the management practices, including public access, in compliance with the management plan?

Yes = 8, No = 0

Table 1 shows the average scores received for each applicable category of review. Field Review scores refer to the adequacy of management actions in the field, while Management Plan Review scores refer to adequacy of discussion of these topics in the management plan. Scores range from 1 to 5 with 5 signifying excellence. For a more detailed key to the scores, please see Appendix A.

Consensus Commendations for the Managing Agency

The following commendations resulted from discussion and vote of the review team members:

1. The team commends the state park staff on consulting subject area experts to inform management decisions. (8+, 0-)
2. The team commends the park staff for working with partners to acquire critical additions adjacent to the park. (8+, 0-)
3. The team commends the park staff for an active fire management program, including use of mechanical and chemical treatments to restore fire into natural communities. (8+, 0-)
4. The team commends the state park staff for adaptive management regarding prioritizing restoration projects as funding becomes available and taking advantage of natural disturbances to improve firelines. (8+, 0-)
5. The team commends the park staff on initiating timber harvest judiciously to manage upland forested natural community restoration. (8+, 0-)
6. The team commends the park staff for partnering with St. Johns River Water Management District and funding partners to replace the Camps Canal water control structure in an effort to improve delivery of water from Camps Canal into Paynes Prairie Basin and Alachua Sink. (8+, 0-)

Consensus Recommendations to the Managing Agency

The following recommendations resulted from a discussion and vote of review team members. The next management plan update should include information about how these recommendations have been addressed:

1. The team recommends that the old livestock fencing be removed within the park. (8+, 0-)

Managing Agency Response: Agree. Funding has been allocated for FY21/22 to remove 12,000 feet of old fence lines within the park. As with many projects at the park, removal of certain fence lines will be contingent on water levels in the prairie basin marsh.

Field Review Checklist Findings

The following items received high scores on the review team checklist, which indicates that management actions exceeded expectations.

Table 18: Results at a glance.

| Major Land Management Categories | Field Review | Management Plan Review | |
|---|---------------|------------------------|------|
| Natural Communities / Forest Management | 4.19 | 3.81 | |
| Prescribed Fire / Habitat Restoration | 3.98 | 4.42 | |
| Hydrology | 4.55 | 4.67 | |
| Imperiled Species | 4.53 | 4.50 | |
| Exotic / Invasive Species | 4.53 | 4.29 | |
| Cultural Resources | 4.69 | 4.75 | |
| Public Access / Education / Law Enforcement | 4.56 | 4.46 | |
| Infrastructure / Equipment / Staffing | 4.31 | N/A | |
| Color Code (See Appendix A for detail) | | | |
| Excellent | Above Average | Below Average | Poor |

1. **Natural communities, specifically limestone outcrop, mesic hammock, sinkhole, upland hardwood forest, xeric hammock, alluvial forest, basin marsh, depression marsh, basin swamp, dome swamp, baygall, bottomland forest, floodplain swamp, hydric hammock, clastic upland lake, marsh lake, sinkhole lake, blackwater stream, seepage stream, spring run and aquatic cave.**
2. **Listed species, listed animal and plant species in general, and specifically gopher tortoise, listed wading bird spp., Florida pine snake, silver buckthorn, Godfrey's swamp privet, brittle maidenhair fern and hooded pitcher plant.**
3. **Natural resources survey/monitoring resources; specifically sport fish or their habitat monitoring, listed species or their habitat monitoring, other non-game species or their habitat monitoring, fire effects monitoring, other habitat management effects monitoring, and invasive species survey and monitoring.**
4. **Cultural resources, specifically survey and protection/preservation.**
5. **Prescribed fire, specifically quality.**
6. **Restoration, specifically Upland pine / upland mixed woodland.**
7. **Forest Management, specifically timber inventory, timber harvesting, and site preparation.**
8. **Non-native, invasive, and problem species, specifically prevention and control of plants, animals, and pests/pathogens.**
9. **Hydro-alteration, specifically roads and culverts, ditches and canals, hydro-period alteration, water level alterations, dams, reservoirs, and other impoundments.**
10. **Ground Water Monitoring, specifically quality and quantity**
11. **Surface water monitoring, specifically quantity and quantity**
12. **Resource protection, specifically boundary survey, gates and fencing, signage, and law enforcement presence.**
13. **Adjacent Property Concerns, specifically expanding development, and inholdings and additions.**
14. **Public access, specifically roads, and parking.**
15. **Environmental education and outreach, specifically wildlife, invasive species, habitat management activities, interpretive facilities and signs, recreational opportunities, and management of visitor impacts.**
16. **Management Resources, specifically waste disposal and sanitary facilities, buildings, equipment, and funding.**

Items Requiring Improvement Actions in the Field

The following items received low scores on the review team checklist, which indicates that management actions noted during the Field Review were not considered sufficient (less than 3.0 score on average). Please note that overall good scores do not preclude specific recommendations by the review team requiring remediation. The management plan update should include information on how these items have been addressed:

1. **The maintenance condition of the natural communities, specifically sandhill, upland mixed woodland, and upland pine, received below average scores. The review team is asked to evaluate, based on their perspective, what percent of the natural community is in maintenance condition. The scores range from 1 to 5, with 1 being 0-20% in maintenance condition, 2 being 21-40%, 3 being 41-60%, 4 being 61-80% and 5 being 81-100%.**

Managing Agency Response: The majority of the sandhill, upland mixed woodland and upland pine areas are in poor condition due to past land use history which included cattle grazing and conversion to improved pasture. Restoration of these degraded sites are being pursued as staff and funding allows and are considered along with the park's many other restoration and management objectives.

Items Requiring Improvements in the Management Plan

The following items received low scores on the review team checklist, which indicates that the text noted in the Management Plan Review does not sufficiently address this issue (less than 3.0 score on average). Please note that overall good scores do not preclude specific recommendations by the review team requiring remediation. The next management plan update should address the checklist items identified below.

- 1. Natural Resources Survey and Monitoring Resources, specifically fire effects monitoring, received a below average score. This is an indication that the management plan does not sufficiently address survey or monitoring.**

Managing Agency Response: Fire effects monitoring will be addressed in greater detail in the next unit management plan revision. The current management plan was reviewed by the relevant agencies and was in full compliance with Chapters 253 and 259, F.S., and Chapter 18-2, F.A.C., when it was approved by ARC.

- 2. Forest Management, specifically timber inventory, and timber harvesting, received below average scores. This is an indication that the management plan does not sufficiently address forest management.**

Managing Agency Response: The Park Service has completed a multi-phased statewide project which included a vegetation inventory of upland forest communities and has created a comprehensive GIS dataset of forest/vegetation for all parks. This data will be utilized to create the timber management component for the next unit management plan revision, and to guide forest management decisions to produce the desired future condition for each natural community. The current management plan was reviewed by the relevant agencies and was in full compliance with Chapters 253 and 259, F.S., and Chapter 18-2, F.A.C. when it was approved by ARC.

Watermelon Pond Wildlife and Environmental Area

Managed by: Florida Fish and Wildlife Conservation Commission

Acres: 1,287.59

County: Alachua

Purpose(s) for Acquisition: Gopher tortoise mitigation park (Section 379.212, FS)

Acquisition Program(s): Florida Forever

Original Acquisition Date: 3/22/07

Area Reviewed: Entire Property

Last Management Plan Approval Date: 4/19/19

Review Date: 6/4/21

Agency Manager and Key Staff:

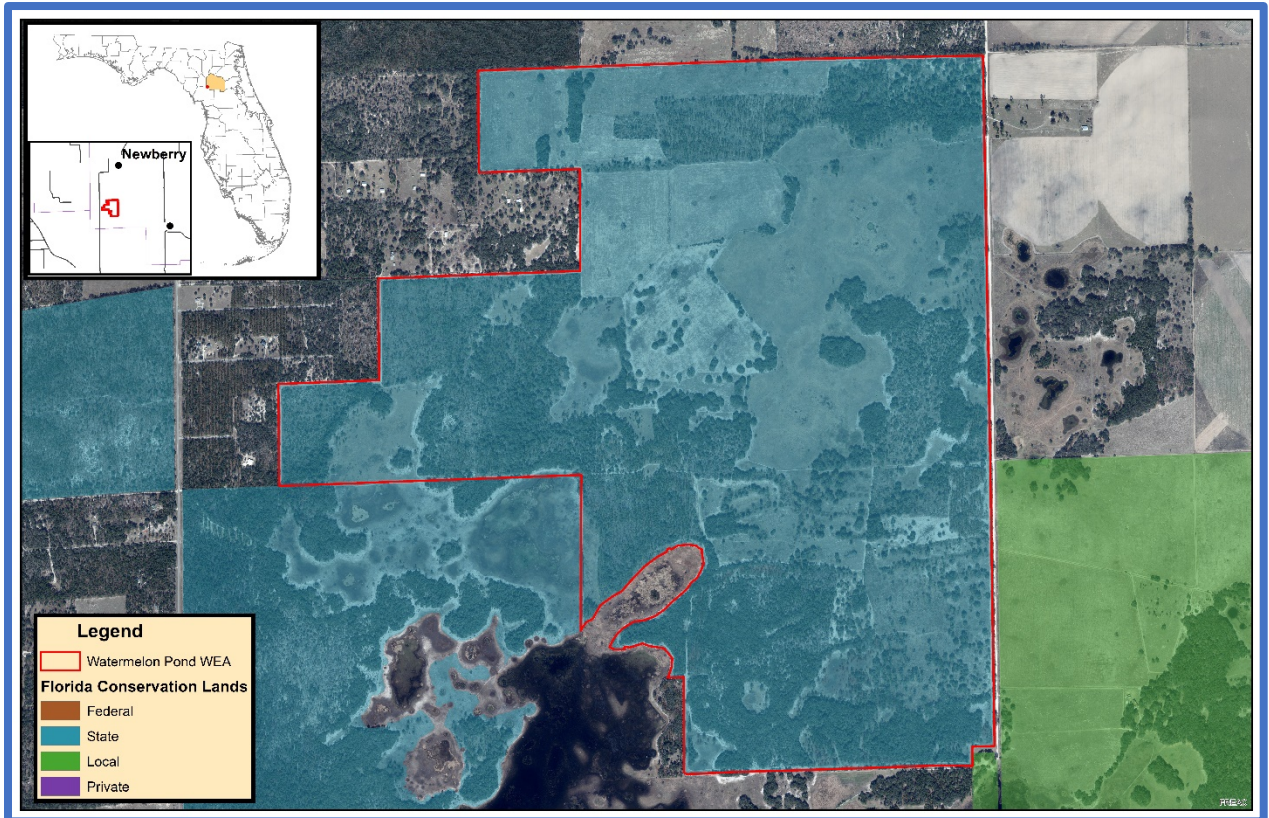
- Mitch Petoskey, Manager
- Sharon Hester, District Biologist
- Rick Owen, DRP District
- Shelly Wayte, FFS
- Emily Uhlmann, Local Gov't.
- Ryan Sims, SRWMD
- Scotland Talley, FWC
- Michael Bubb, Conservation Org.
- Caleb Johnston, DEP District
- Peter NeSmith, Private Land Manager

Review Team Members (voting)

Non-Team Members (attending)

- Keith Singleton, DEP/DSL
- Dylan Haase, FWC

Property Map



Overview of Land Management Review Results
Is the property managed for purposes that are compatible with conservation, preservation, or recreation?

Yes = 8, No = 0

Are the management practices, including public access, in compliance with the management plan?

Yes = 8, No = 0

Table 1 shows the average scores received for each applicable category of review. Field Review scores refer to the adequacy of management actions in the field, while Management Plan Review scores refer to adequacy of discussion of these topics in the management plan. Scores range from 1 to 5 with 5 signifying excellence. For a more detailed key to the scores, please see Appendix A.

Consensus Commendations for the Managing Agency

The following commendations resulted from discussion and vote of the review team members:

1. The team commends the Fish and Wildlife Conservation Commission (FWC) for working with the Fish and Wildlife Research Institute on researching the effectiveness of herbicide use on hardwoods in sandhills and for continuing efforts on restoration sandhill areas. (8+, 0-)
2. The team commends FWC for continuing to get prescribed fire into the fire dominated natural communities (8+, 0-)
3. The team commends FWC for staying on top of the exotic invasive species management (7+, 0-)

Consensus Recommendations to the Managing Agency

The following recommendations resulted from a discussion and vote of review team members. The next management plan update should include information about how these recommendations have been addressed:

1. The team recommends that FWC consider relocating or abandoning any service road/firebreak that bisects or borders wetlands to decrease fragmentation and protect water quality, wildlife habitat and vegetation continuity. (7+, 0-)

Managing Agency Response:

Field Review Checklist Findings

The following items received high scores on the review team checklist, which indicates that management actions exceeded expectations.

1. **Natural communities, specifically basin marsh, depression marsh, sinkhole, and xeric hammock.**
2. **Listed species, listed animal and plant species in general, and specifically Southeastern American kestrel, and gopher tortoise.**
3. **Natural resources survey/monitoring resources; specifically listed species or their habitat monitoring, other non-game species or their habitat monitoring, fire effects monitoring, other habitat management effects monitoring, and invasive species survey and monitoring.**

Table 19: Results at a glance.

| Major Land Management Categories | Field Review | Management Plan Review |
|---|---------------|------------------------|
| Natural Communities / Forest Management | 4.43 | 4.46 |
| Prescribed Fire / Habitat Restoration | 4.04 | 4.40 |
| Hydrology | 4.43 | 4.86 |
| Imperiled Species | 4.49 | 4.58 |
| Exotic / Invasive Species | 4.46 | 4.56 |
| Cultural Resources | 4.63 | 4.63 |
| Public Access / Education / Law Enforcement | 4.71 | 4.69 |
| Infrastructure / Equipment / Staffing | 4.46 | N/A |
| Color Code (See Appendix A for detail) | | |
| Excellent | Above Average | Below Average |
| | | Poor |

- 4. Cultural resources, specifically cultural resource survey, and protection and preservation.**
- 5. Prescribed fire, specifically area being burned, frequency and quality.**
- 6. Forest management, specifically timber inventory, timber harvesting, reforestation/afforestation and site preparation.**
- 7. Non-native, invasive, and problem species, specifically prevention and control of plants, animals, and pests/pathogens.**
- 8. Hydro-alteration, specifically roads and culverts.**
- 9. Resource protection, specifically boundary survey, gates and fencing, signage and law enforcement presence.**
- 10. Adjacent property concerns, specifically expanding development, and inholdings and additions.**
- 11. Public access, specifically parking.**
- 12. Environmental education and outreach, specifically wildlife, invasive species, habitat management activities, interpretive facilities and signs, recreational opportunities, and management of visitor impacts.**
- 13. Management resources, specifically waste disposal, sanitary facilities, buildings, equipment, staff, and funding.**

Items Requiring Improvement Actions in the Field

The following items received low scores on the review team checklist, which indicates that management actions noted during the Field Review were not considered sufficient (less than 3.0 score on average). Please note that overall good scores do not preclude specific recommendations by the review team requiring remediation. The management plan update should include information on how these items have been addressed:

The review team scores did not identify items requiring improvement actions in the field.

Items Requiring Improvements in the Management Plan

The following items received low scores on the review team checklist, which indicates that the text noted in the Management Plan Review does not sufficiently address this issue (less than 3.0 score on average). Please note that overall good scores do not preclude specific recommendations by the review team requiring remediation. The next management plan update should address the checklist items identified below:

The review team scores did not identify items requiring improvements in the management plan.

Appendix A. Scoring System Detail

Explanation of Consensus Commendations:

Often, the exceptional condition of some of the property's attributes impress review team members. In those instances, team members are encouraged to offer positive feedback to the managing agency in the form of a commendation. The teams develop commendations generally by standard consensus processes or by majority vote if they cannot obtain a true consensus.

Explanation of Consensus Recommendations:

Subsection 259.036(2), F.S., specifically states that the managing entity shall consider the findings and recommendations of the land management review. We ask team members to provide general recommendations for improving the management or public access and use of the property. The teams discuss these recommendations and develop consensus recommendations as described above. We provide these recommendations to the managing agency to consider when finalizing the required ten-year management plan update. We encourage the manager to respond directly to these recommendations and include their responses in the final report when received in a timely manner.

Explanation of Field Review Checklist and Scores, and Management Plan Review Checklist and Scores:

We provide team members with a checklist to fill out during the evaluation workshop phase of the Land Management Review. The checklist is the uniform tool used to evaluate both the management actions and condition of the managed area, and the sufficiency of the management plan elements. During the evaluation workshop, team members individually provide scores on each issue on the checklist, from their individual perspective. Team members also base their evaluations on information provided by the managing agency staff as well as other team member discussions. Staff averages these scores to evaluate the overall conditions on the ground, and how the management plan addresses the issues. Team members must score each management issue 1 to 5: 1 being the management practices are clearly insufficient, and 5 being that the management practices are excellent. Members may choose to abstain if they have inadequate expertise or information to make a cardinal numeric choice, as indicated by an "X" on the checklist scores, or they may not provide a vote for other unknown reasons, as indicated by a blank. If a majority of members failed to vote on any issue, that issue is determined to be irrelevant to management of that property or it was inadequately reviewed by the team to make an intelligent choice. In either case staff eliminated the issue from the report to the manager.

Average scores are interpreted as follows:

- Scores 4.0 to 5.0 are *Excellent*
- Scores 3.0 to 3.99 are *Above Average*
- Scores 2.0 to 2.99 are *Below Average*
- Scores 1.0 to 1.99 are considered *Poor*