

Florida Department of Agriculture and Consumer Services, Florida Forest Service

Land Management Plan Amendment
to the
Withlacoochee State Forest Ten-Year Land Management Plan

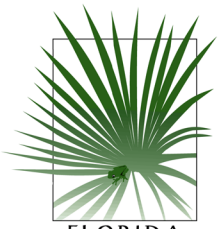
March 2022

The Florida Forest Service (FFS) is requesting ARC approval for a Land Management Plan Amendment for the Withlacoochee State Forest (WSF) Ten-Year Land Management Plan. WSF is an approximately 160,000-acre, multiple-use state forest, located in Hernando, Citrus, Sumter, Lake, and Pasco Counties, Florida. The Board of Trustees of the Internal Improvement Trust Fund of the State of Florida (BOT) hold title to the affected portion of the state forest.

The FFS proposes to construct a pedestrian foot bridge across Devil's Creek on the Richloam Tract. The bridge will allow hikers on the existing Florida National Scenic Trail (FNST) to safely cross the creek. The proposed bridge length is 100 feet long and five (5) feet wide based on the USDA Forest Service engineered plans. This bridge has been requested by public users of the FNST and supported by the Florida Trail Association and United States Forest Service (USFS). As such, it is the first project identified under the Florida National Scenic Trail Challenge Cost-Share Agreement between the FFS and the USFS. The bridge will be constructed by licensed professionals.

FFS staff and a certified archaeological resource monitor (ARM) surveyed the proposed site areas for threatened or endangered species and possible historical and/or archaeological evidence. They concluded no known archeological sites occur in the project areas, as well as no evidence of threatened or endangered species were observed at the project site vicinity.

FFS additionally consulted with the Florida Natural Areas Inventory (FNAI), the Division of Historic Resources (DHR), and Southwest Florida Water Management District (SWFWMD) regarding the proposed activities; there are no known resource conflicts and the SWFWMD will require an Environmental Resource Permit (ERP). FFS staff is proceeding with obtaining the ERP. Consulting agency (FNAI, DHR, SWFWMD) response letters are included with this request, as are other applicable supporting documents.



FLORIDA
Natural Areas
INVENTORY

1018 Thomasville Road
Suite 200-C
Tallahassee, FL 32303
850-224-8207
fax 850-681-9364
www.fnai.org

To: Todd Knapp

From: Dan, Hipes, Senior Field Ecologist, FNAI

Date: January 26, 2022

RE: Proposed Devil's Creek Footbridge, Withlacoochee State Forest

We have reviewed the materials for the proposed construction of the footbridge to cross Devil's Creek within the Richloam Tract of Withlacoochee State Forest. There are no rare species records in the FNAI database for the project site. No resources of concern are expected to be affected by this project. Sounds like a great project that will be appreciated by many who visit the State Forest.

Thank you for the review request.



Florida Resources
and Environmental
Analysis Center

Institute of Science
and Public Affairs

The Florida State University

Tracking Florida's Biodiversity



FLORIDA DEPARTMENT *of* STATE

RON DESANTIS
Governor

LAUREL M. LEE
Secretary of State

Florida Forest Service
Department of Agriculture and Consumer Services
3125 Conner Boulevard
Suite I-266, Mail Stop C-25
Tallahassee, FL 32399-1650

January 28, 2022

Re: DHR No.: 2022-0282
Project: Devil's Creek Footbridge, Withlacoochee State Forest

To Whom It May Concern:

Our office reviewed the referenced project in accordance with Chapter 267, *Florida Statutes*, and implementing state regulations, for possible effects on historic properties listed, or eligible for listing, in the *National Register of Historic Places*, or otherwise of historical, architectural or archaeological value.

It is the opinion of this agency that ground disturbing activities for the above project should be monitored by someone who has completed our Archaeological Resource Management (ARM) training program. Once a project is complete, the monitor should submit the appropriate monitoring forms to this agency. In the event that unmarked human remains are encountered during permitted activities, all work shall stop immediately and the proper authorities notified in accordance with Section 872.05, *Florida Statutes*.

If you have any questions, please contact Jennifer Tobias, Historic Sites Specialist, by email at Jennifer.Tobias@dos.myflorida.com.

Sincerely,

Timothy A. Parsons, Ph.D.
Director, Division of Historical Resources and
State Historic Preservation Officer

Division of Historical Resources
R.A. Gray Building • 500 South Bronough Street • Tallahassee, Florida 32399
850.245.6300 • 850.245.6436 (Fax) • FLHeritage.com





An Equal Opportunity Employer

Southwest Florida Water Management District

2379 Broad Street, Brooksville, Florida 34604-6899

(352) 796-7211 or 1-800-423-1476 (FL only)

WaterMatters.org

Bartow Office

170 Century Boulevard
Bartow, Florida 33830-7700
(863) 534-1448 or
1-800-492-7862 (FL only)

Sarasota Office

78 Sarasota Center Boulevard
Sarasota, Florida 34240-9770
(941) 377-3722 or
1-800-320-3503 (FL only)

Tampa Office

7601 U.S. 301 North (Fort King Highway)
Tampa, Florida 33637-6759
(813) 985-7481 or
1-800-836-0797 (FL only)

- Kelly S. Rice**
Chair, Citrus, Lake, Levy, Sumter
- Joel Schleicher**
Vice Chair, Charlotte, Sarasota
- Michelle Williamson**
Secretary, Hillsborough
- Ed Armstrong**
Treasurer, Pinellas
- Ashley Bell Barnett**
Polk
- Jack Bispham**
Manatee
- John Hall**
Polk
- William Hogarth**
Pinellas
- John Mitten**
Hernando, Marion
- Seth Weightman**
Pasco
- Brian J. Armstrong, P.G.**
Executive Director

January 25, 2022

Todd Knapp
State Lands Supervisor
Florida Forest Service
Florida Department of Agriculture and Consumer Services
3125 Conner Boulevard
Suite I-266, Mail Stop C-25
Tallahassee, Florida 32399-1650

Subject: Withlacoochee State Forest – Devil’s Creek Bridge

Dear Mr. Knapp:

The Southwest Florida Water Management District (District) Land Resources Bureau has reviewed the ground disturbance request for the Withlacoochee State Forest Devil’s Creek Pedestrian Footbridge. The District understands that this request is an amendment to the Withlacoochee State Forest Management Plan. This activity is consistent with land management activities generally approved in management plans and the District’s Land Resources Bureau feels that this bridge is in the public’s interest. As such, the District has no objection to this request relative to this activity not being contemplated in the management plan for the Withlacoochee State Forest.

This project is subject to Environmental Resource Permitting regulated by the District. I have consulted with District Regulatory staff, and they recommend your agency schedule a pre-application meeting to review permitting requirements. During this meeting District staff will provide an overview of the process and necessary documentation required in the permit application. A link is provided below to set up the pre-application meeting. Additionally, there may be local permitting requirements that are not regulated by the District. District staff will be able to direct you to the appropriate county staff, if necessary. Should you have questions feel free to contact me.

<https://www.swfwmd.state.fl.us/business/epermitting/environmental-resource-permit/pre-app-form>

Sincerely,

Chris Reed
Land Management Section Manager
Land Resources Bureau

CR:mp

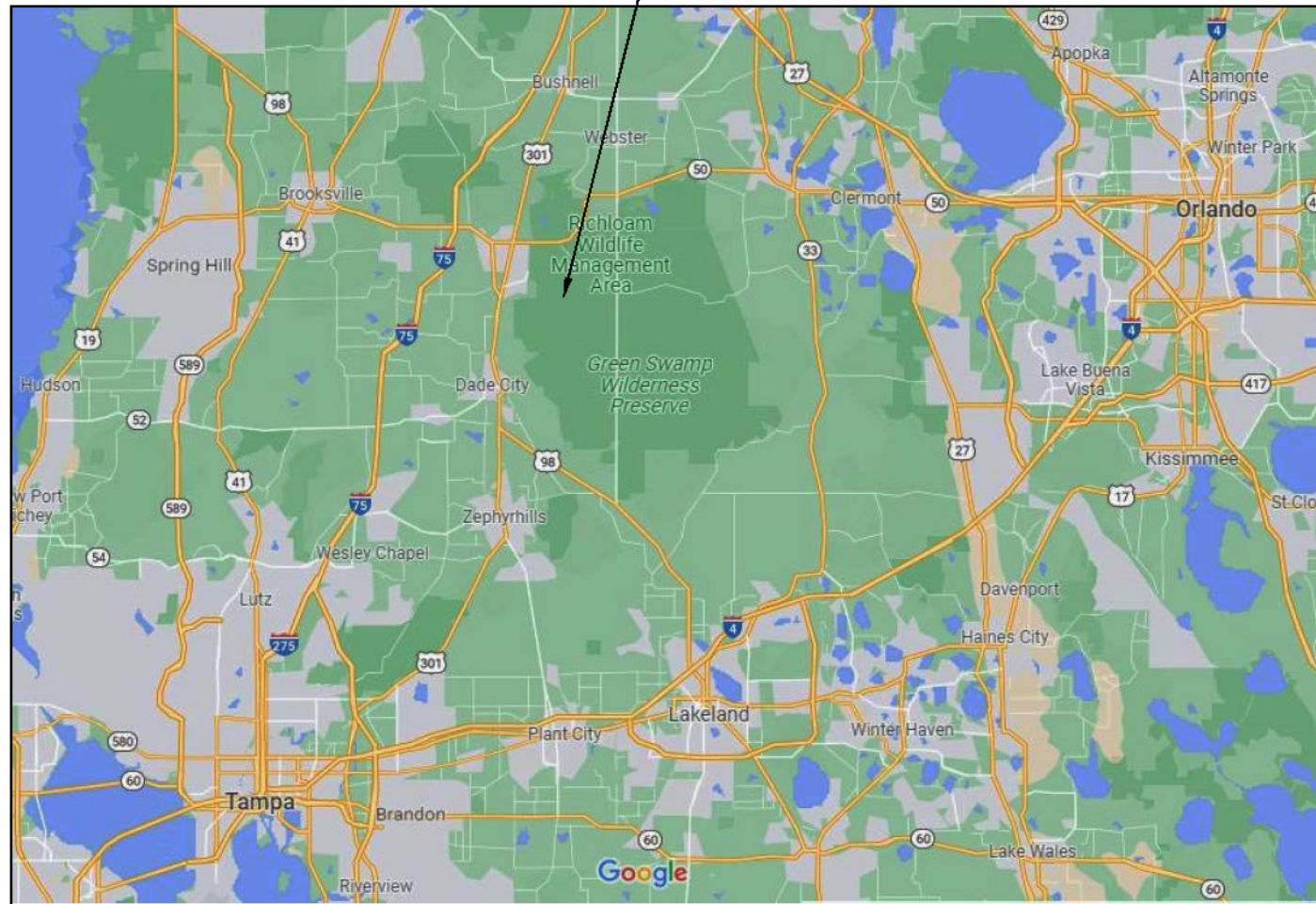
FLORIDA NATIONAL TRAIL DEVILS CREEK BRIDGE

N28°27.02', W82°07.77'



Florida Trail
National Scenic Trail

Location



Sheet Index

- 1.....Cover Sheet
- 2.....Site and Spec Summary
- 3.....Bridge Elevation
- 4.....Bridge Details
- 5.....Rail Details
- 6.....Plan View and Rail Details



Florida Trail
DEVILS CREEK BRIDGE

Cover Sheet

SCALE: SHEET NUMBER:
1 of 6
DATE: 4/8/2016

Specification Summary:

Design Loads: Superstructure: 65 psf pedestrian live load (per FSH 7709.56b, 82.2); rails: 200 lb. lateral force or 50 plf per FSH 7709.56b, 82.4.3.

Soil Design: Soil classification: SC-SM, presumptive load-bearing value is 2000 psf.

H&H analysis: not done, high water based on observations in Jan. 2020.

Lumber:
All lumber shall be full sawn Southern Pine #1 or better for joists, headers, and rail posts; and #2 or better for deck, backing boards, and cross bracings. All sawn lumber shall be treated with CCA water borne preservatives (or other approved by the Engineer) to 2.5 pcf and per AWP Commodity Spec. G, Use Category UC5C,

Piles are Southern Pine meeting ASTM D25 or ASTM 3200, and treated with CCA water borne preservatives to 2.5 pcf and per AWP Commodity Spec. G, Use Category UC5C.

All preservative treated lumber shall be certified by an independent, certified tester to comply with AWP T1-06, Use and Commodity Specification, including retention and penetration. Certification shall be provided prior to construction.

All drilled holes and cuts shall be field treated with three coats of copper naphthanate, 8% copper concentrate.

All steel products are hot dipped galvanized after fabrication per ASTM A153, Class C.

Stong-Drive SDWH TIMBER-HEX HDG are hot dipped galvainize Simpson screws.

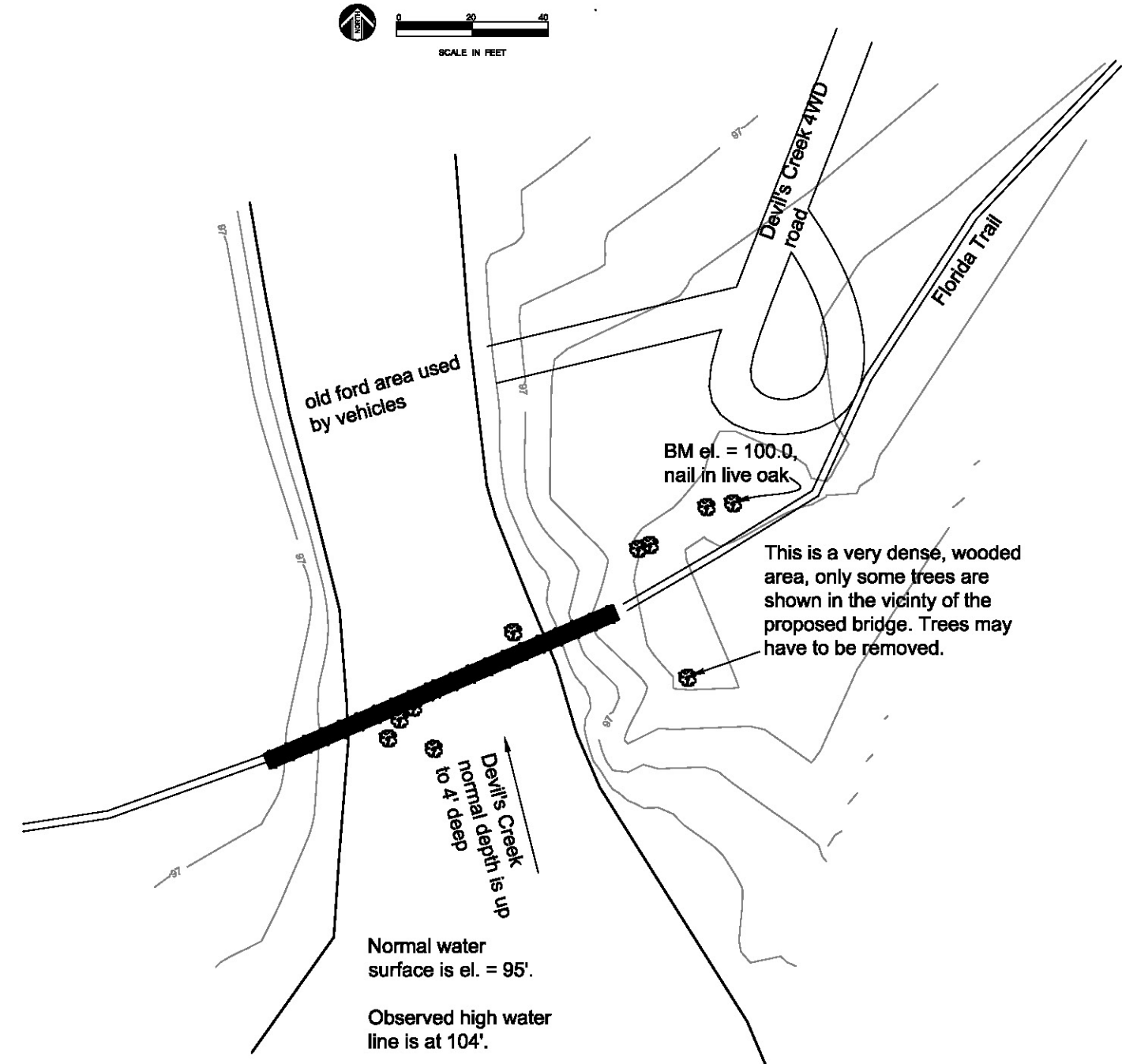
Wire rails are 3/8"Ø x 6 x 7 FC (Poly core) meeting ASTM A475, galvanized Class C. Deadman cables are 1/2"Ø meeting A475 glvanized Class C.

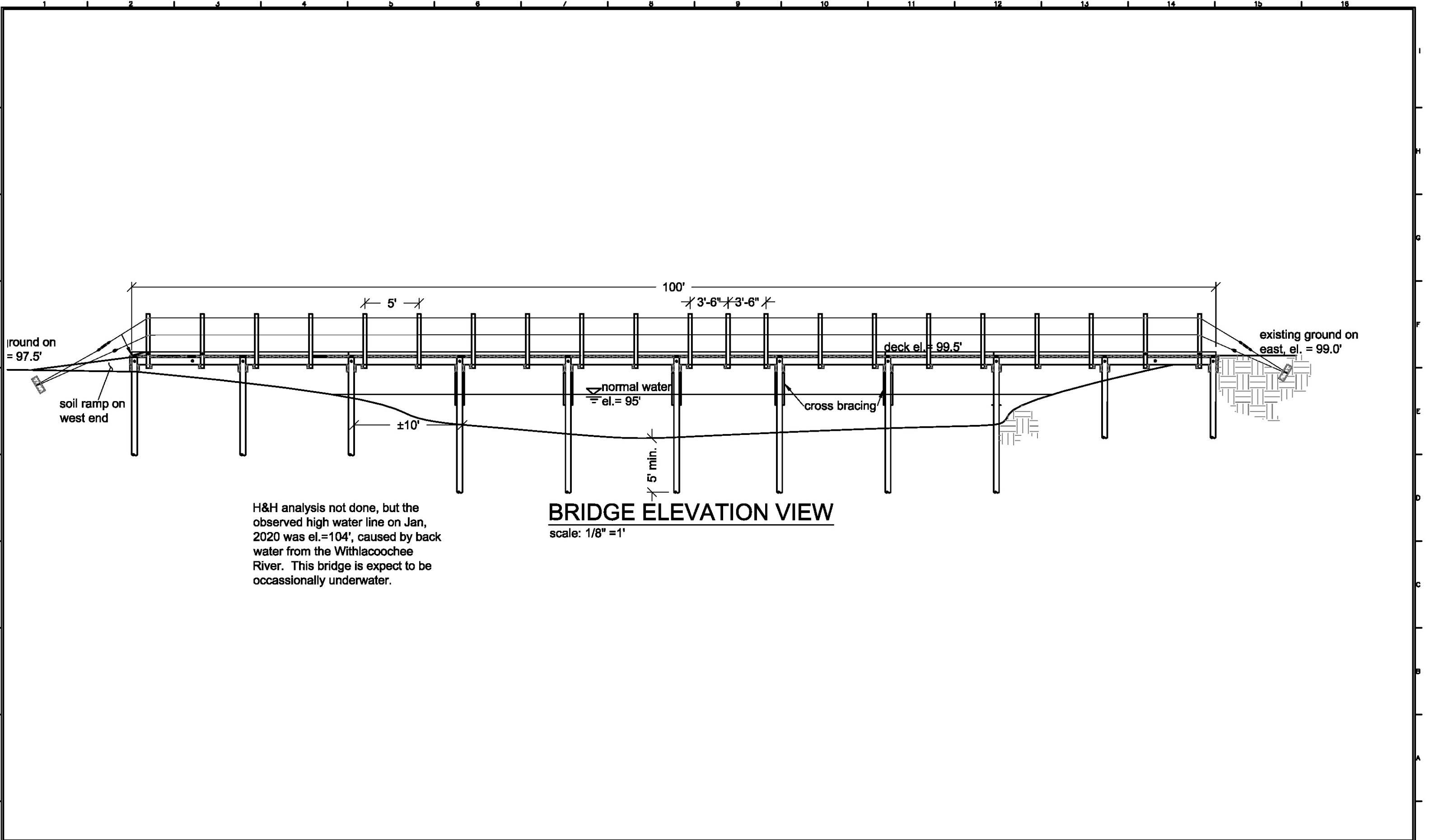
Construction will follow the Standard Specifications for Construction of Roads and Bridges on Federal Highway Projects, FP-14

The Owner and Contractor are responsible for compliance with these plans and specifications.

- Abbreviations:**
 T.B: Timber Bolt, dome head 3.5 times shaft
 M.B.: Machine Bolt, hex head
 E.B.: Eye Bolt
 S.R.: Split Ring
 M.W.: Malleable Washer
 o.s.: one side
 b.s.: both sides
 pc: pieces
 S4S: lumber planed on 4 sides
 Full sawn: unplanned lumber with dimensions matching the nominal dimensions.
 el: elevation
 c-c: center to center
 o.c., on center
 c.y.: cubic yard
 P: plate
 CL: centerline

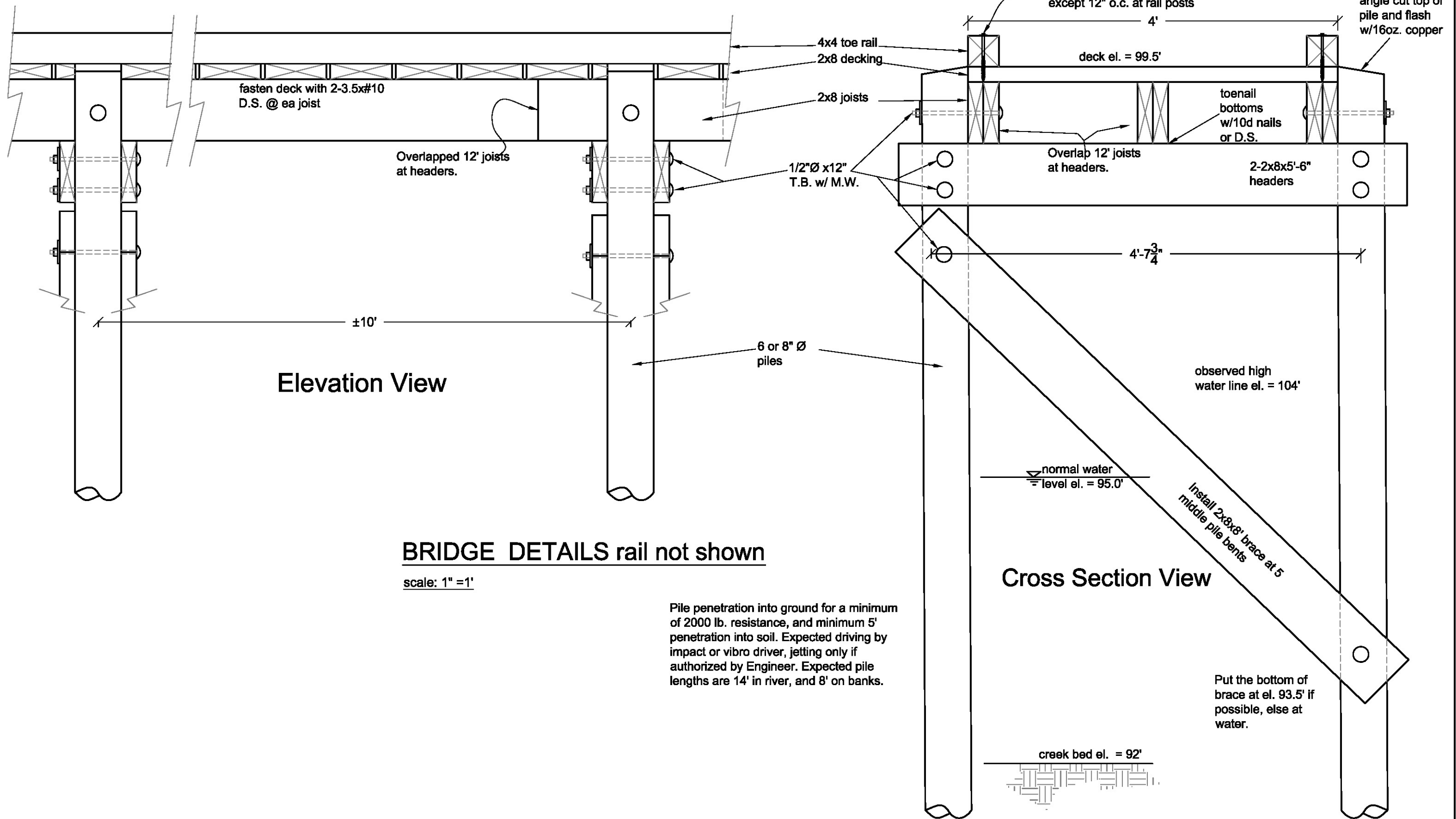
Engineer: Desgin Engineer as indicated on the plans





H&H analysis not done, but the observed high water line on Jan, 2020 was el.=104', caused by back water from the Withlacoochee River. This bridge is expect to be occassionally underwater.

BRIDGE ELEVATION VIEW
scale: 1/8" = 1'



Elevation View

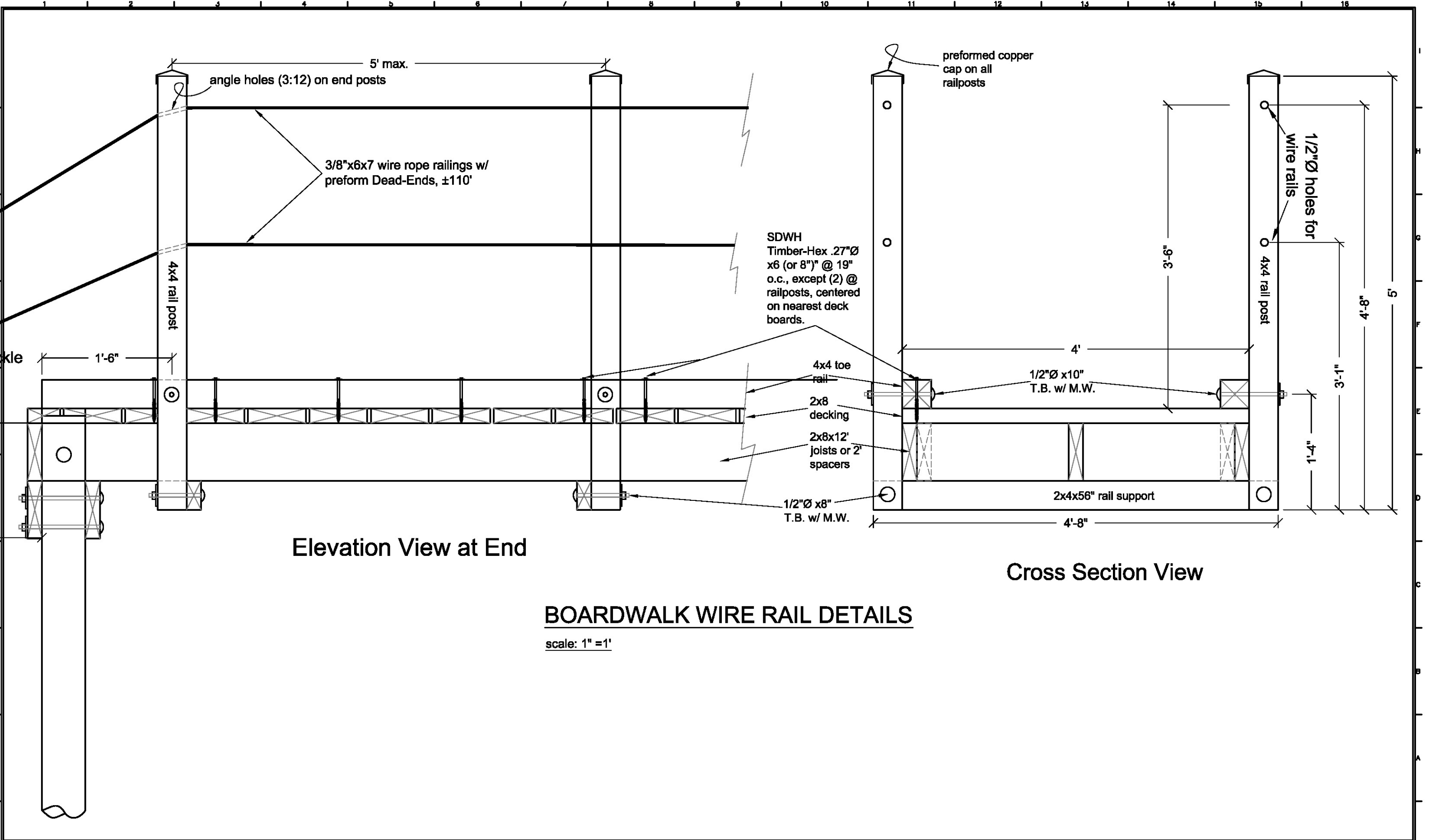
BRIDGE DETAILS rail not shown

scale: 1" = 1'

Pile penetration into ground for a minimum of 2000 lb. resistance, and minimum 5' penetration into soil. Expected driving by impact or vibro driver, jetting only if authorized by Engineer. Expected pile lengths are 14' in river, and 8' on banks.

Cross Section View

creek bed el. = 92'

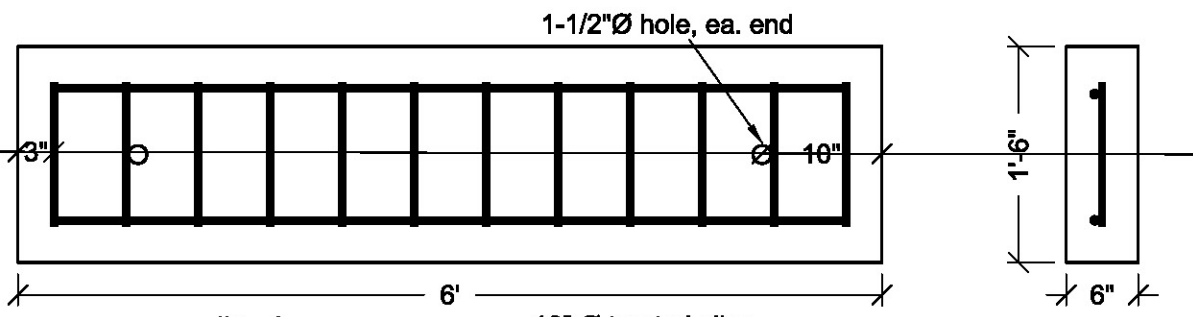
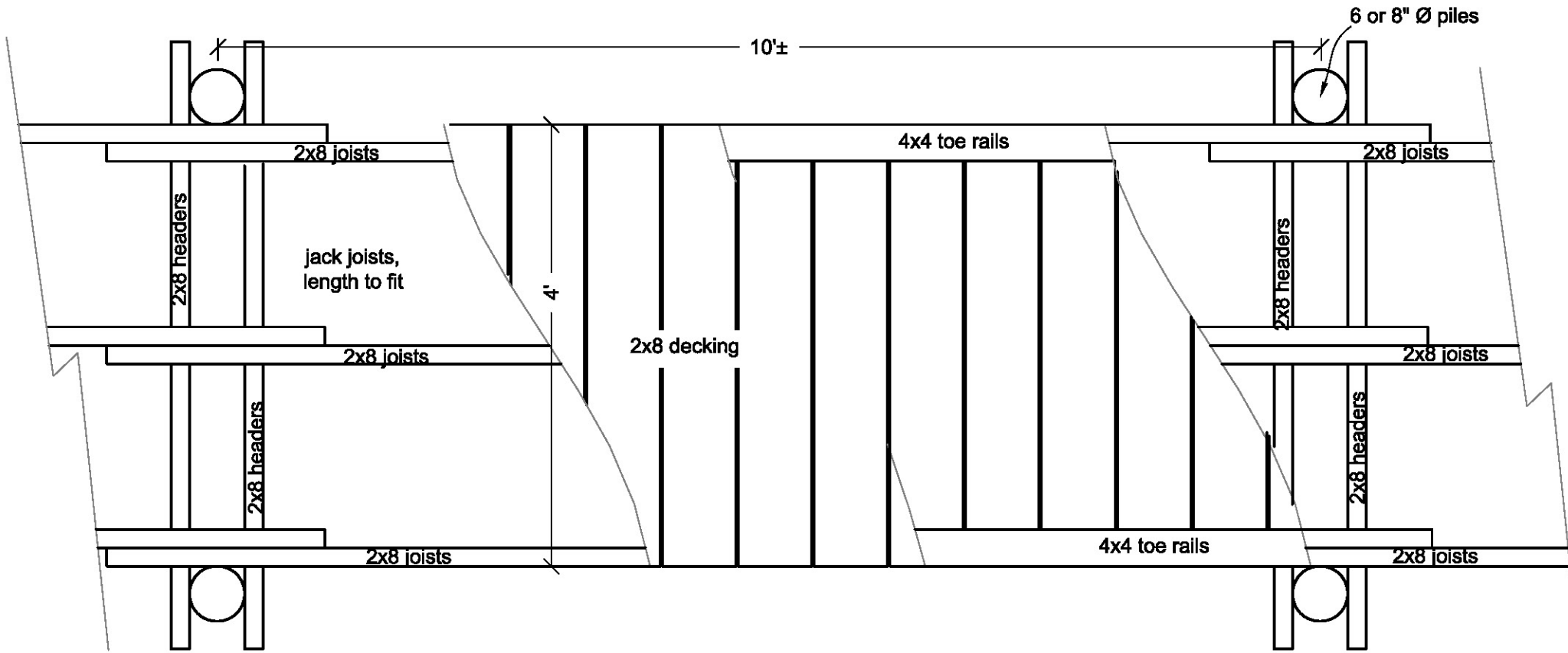


Elevation View at End

Cross Section View

BOARDWALK WIRE RAIL DETAILS

scale: 1" = 1'

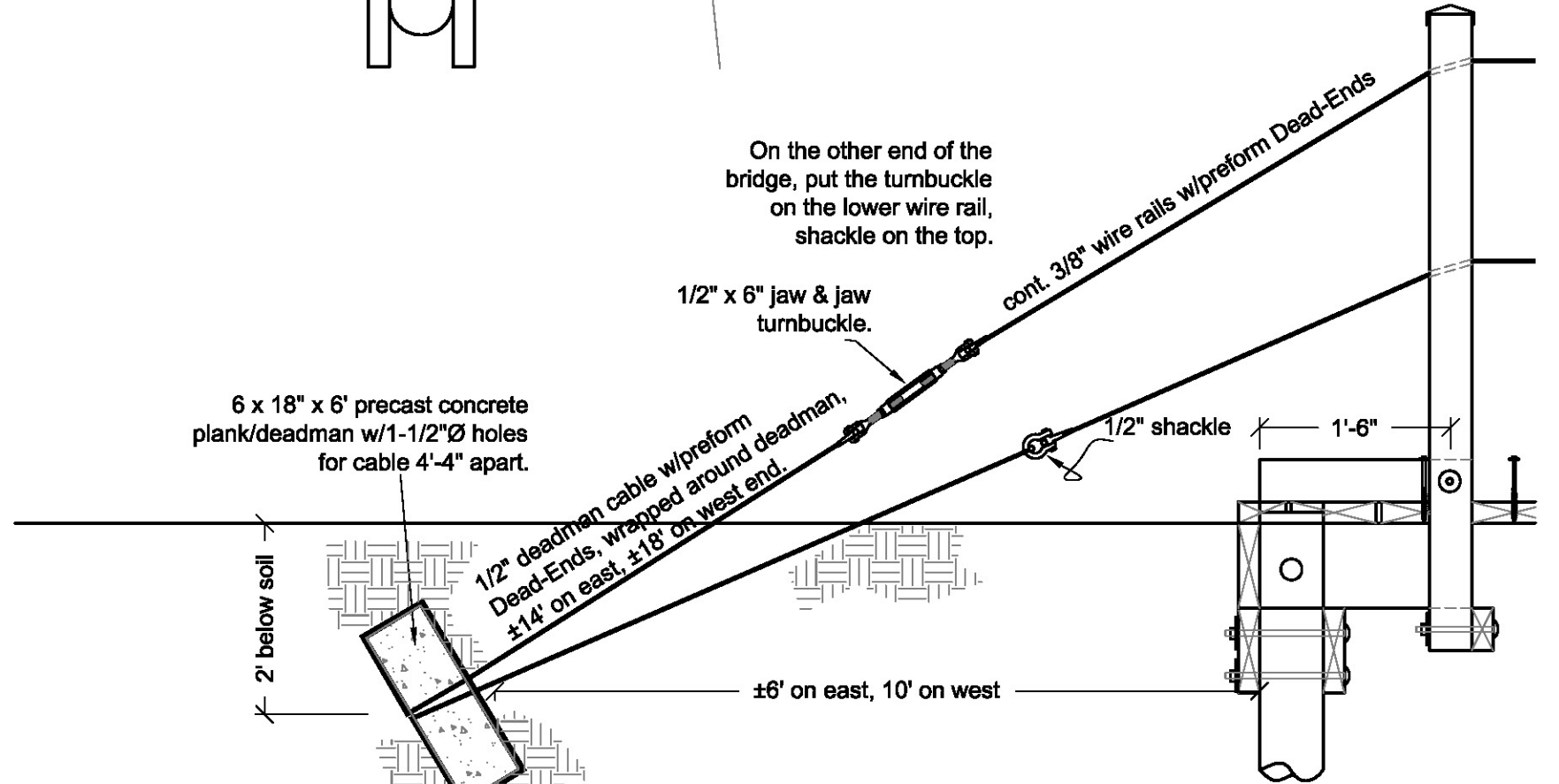


#5 rebar
4,000 psi concrete

10" Ø treated piles
may be substituted

PRECAST CONCRETE DEADMAN 2 pc.

scale: 3/4" = 1'

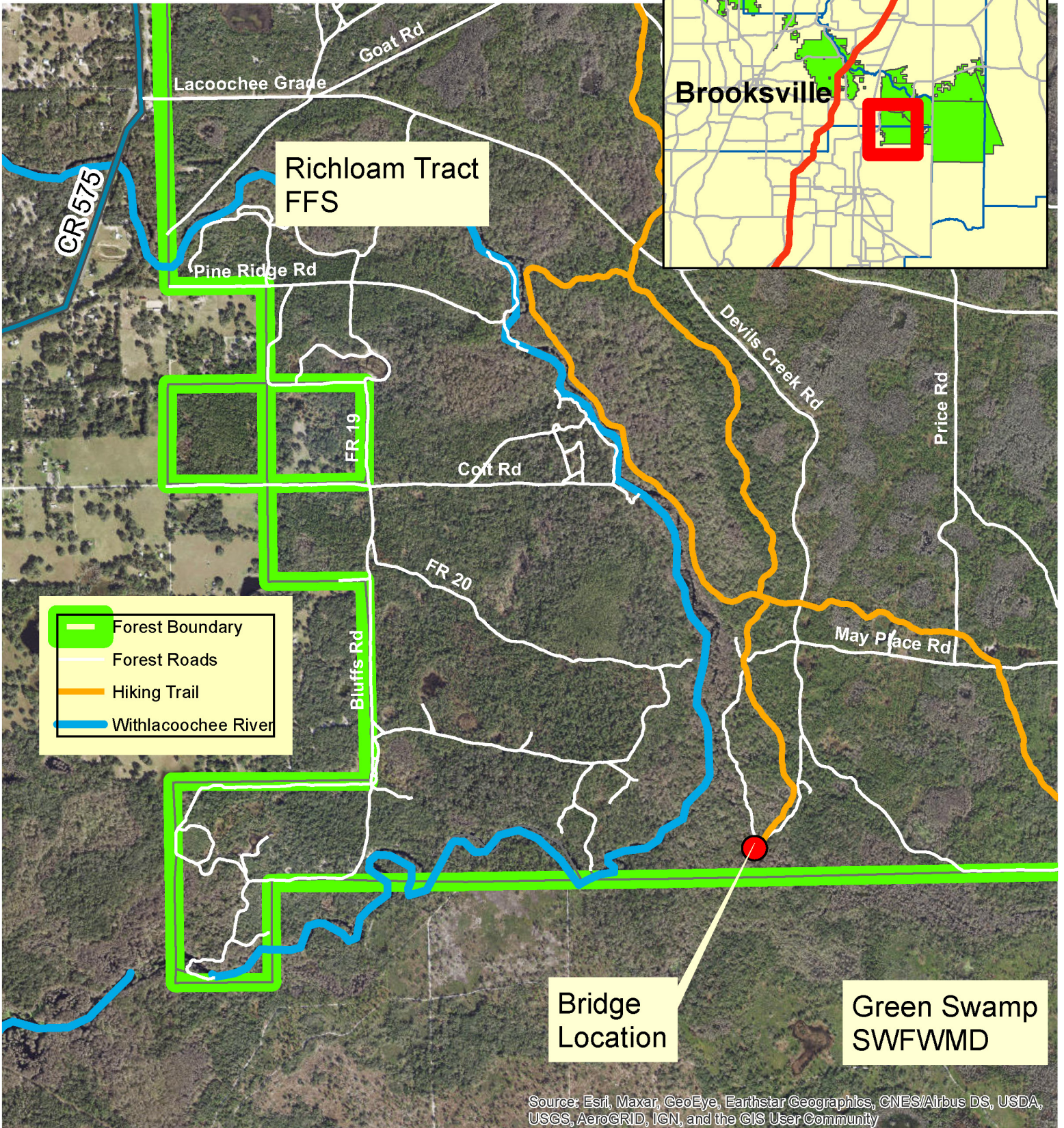


BOARDWALK WIRE RAIL TERMINALS

scale: 3/4" = 1'

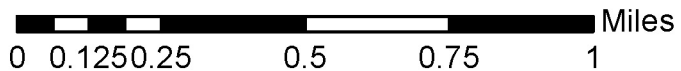


Devil's Creek Bridge Location



Source: Esri, Maxar, GeoEye, Earthstar Geographics, CNES/Airbus DS, USDA, USGS, AeroGRID, IGN, and the GIS User Community

This map is created by Vincent Morris on 11/2/2021 is a product of the Florida Forest Service. No warranties are provided for data therein, its use, or its interpretation.

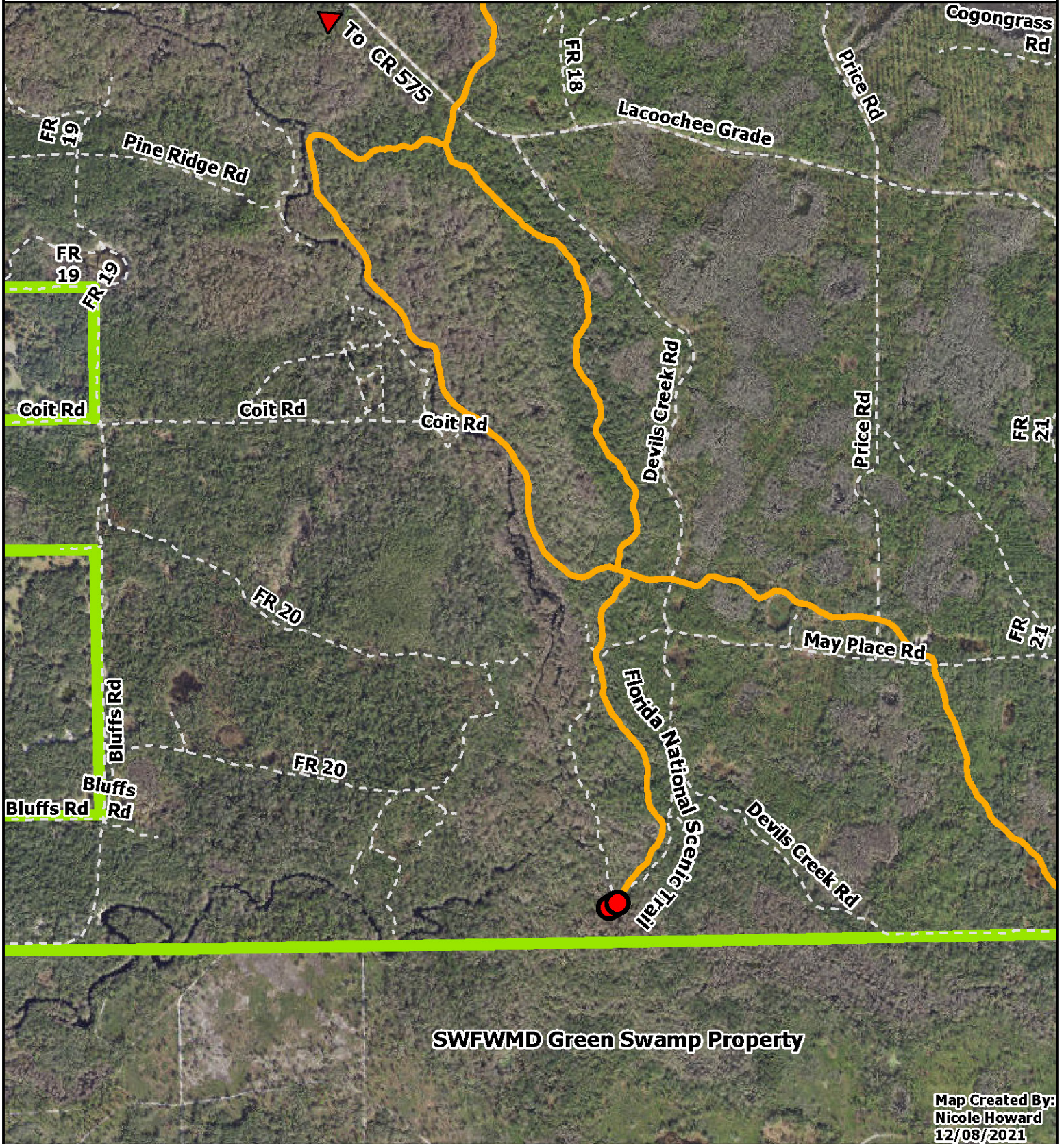




Proposed Devils Creek Bridge Location

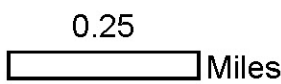
Richloam Tract of the Withlacoochee State Forest

S29, T23S, R22E of Pasco County, Florida



Legend

- Forest Roads
- State Forest Boundary
- WSF_Recreation_Trails
- Devils Creek Bridge



DISCLAIMER

This map is the product of the Florida Division of Forestry. There are no warranties made as to the fitness of this map for any unlisted purpose. Furthermore, no warranties are provided for data therein, its use, or its interpretation.

Map Created By:
Nicole Howard
12/08/2021



Proposed Devils Creek Bridge Location Richloam Tract of the Withlacoochee State Forest S29, T23S, R22E of Pasco County, Florida



SWFWMD Green Swamp Property

State of Florida, **Map Created By:**
Nicole Howard
12/08/2021

Legend

- Forest Roads
- State Forest Boundary
- WSF_Recreation_Trails
- Devils Creek Bridge

0.2
 Miles

DISCLAIMER

This map is the product of the Florida Division of Forestry. There are no warranties made as to the fitness of this map for any unlisted purpose. Furthermore, no warranties are provided for data therein, its use, or its interpretation.

Facing north



Facing west



Facing east



Facing south

