

# COASTAL PARTNERSHIP INITIATIVE

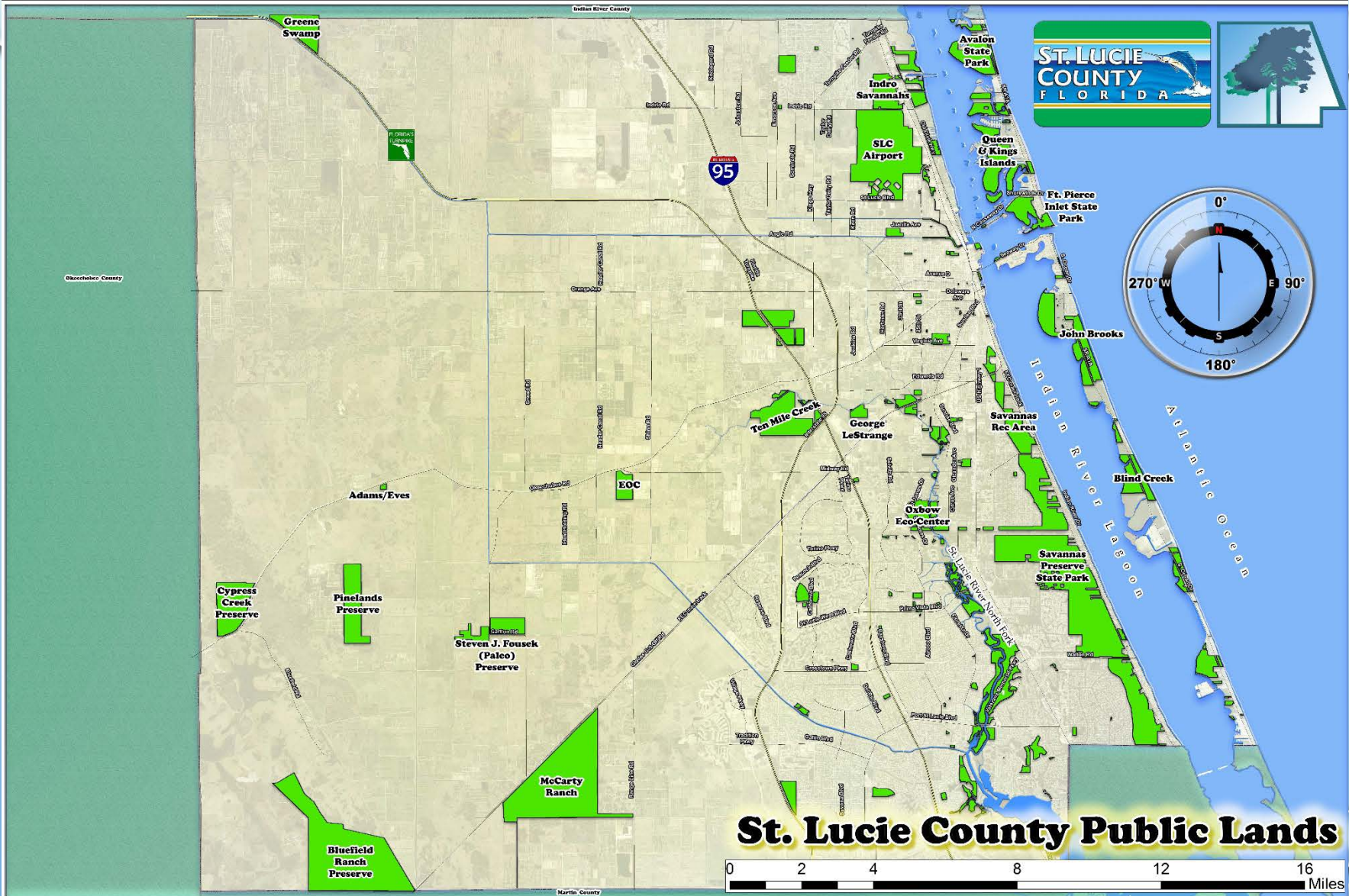
## D.J. WILCOX PRESERVE BOARDWALK

Amy Griffin, Director  
SLC ERD

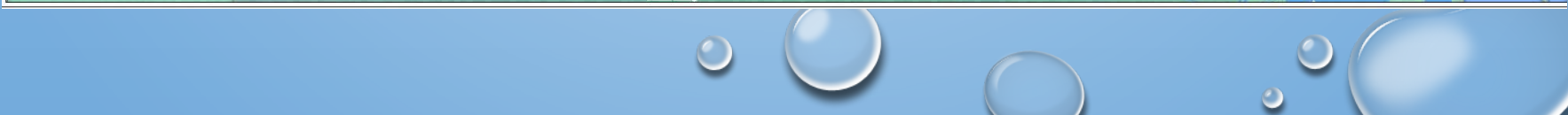


St. Lucie County Preserves





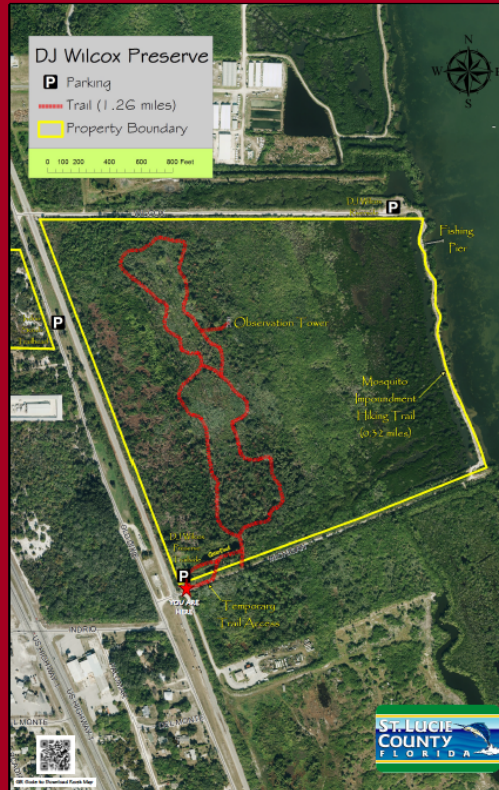
# St. Lucie County Public Lands



# ENVIRONMENTAL RESOURCES DEPARTMENT

- PRESERVE, PROTECT & ENHANCE SLC'S NATURAL RESOURCES
  - ENVIRONMENTAL REGULATIONS DIVISION
    - DEVELOPMENT REVIEW, PERMITS
  - ENVIRONMENTAL EDUCATION & COMMUNITY ENGAGEMENT DIVISION
  - ENVIRONMENTAL LANDS DIVISION
    - 10,000+ ACRES / 70+ MILES OF GW&T'S AND PADDLING TRAILS

# DJ Wilcox Preserve



## Welcome to DJ Wilcox Preserve - Trailside

DJ Wilcox Preserve is a 106-acre site consisting of mixed upland and wetland natural communities including pine flatwoods, oak hammocks, and baygall swamp. In 2003, the County bought this property, which abuts the Indian River Lagoon, through a grant from Florida Communities Trust. The site was named after D. J. Wilcox, past owner of the property and former County Commissioner. Dewey Wilcox was a foreman for the East Coast Development Company (partly owned by Edwin Binney from Crayola fame) that was to create a new town called Indrio during the land boom of the late 1920's. The depression stopped the town from being built and Wilcox purchased much of the land from the company. In the late 1920's Wilcox moved his in-laws, the Aubrecht's, to the property. For more information on the remnants of the Aubrecht homestead (circa 1925) found north of the parking lot scan the QR symbol below or visit [http://www.stlucieco.gov/pdfs/Wilcox\\_Aubrecht\\_Homestead\\_Brochure.pdf](http://www.stlucieco.gov/pdfs/Wilcox_Aubrecht_Homestead_Brochure.pdf).

Acquisition of the site expanded the Indrio North Savannahs Greenway and Trail system, a four-mile-long wildlife corridor and greenway that contains diverse habitats. The corridor provides strategic habitat to birds such as wood storks, bald eagles, Florida scrub jays and black whiskered vireos, and animals such as gopher tortoises, American alligators, and West Indian manatees. In fact, the area is so diverse that the Florida Fish and Wildlife Conservation Commission has categorized it as a "biodiversity hotspot" and priority wetland for wetland species.

DJ Wilcox Preserve borders the Indian River Lagoon, the most ecologically diverse estuary in North America, with more than 4,000 species of plants and animals. Its preservation serves to protect the upland and wetland communities bordering the lagoon (and thus the water quality) but it also provides the public with access to the lagoon.

The D.J. Wilcox Preserve is rich with flora and fauna typical to coastal ecosystems. A one mile interpretive trail has been established on the site that leads hikers through several different habitats including oak hammock, pine flatwoods, and a baygall swamp. Some of the largest slash pines in St. Lucie County exist on the site and provide prime habitat for bald eagles. An observation tower has been erected that allows visitors to view acres of mangrove wetlands which lie east of the trail.

## Restoration efforts

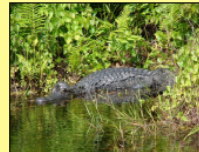
Most of the natural communities in Florida are adapted to fire. DJ Wilcox is no exception. This site relies on periodic fire to recycle plant nutrients and in some cases disperse seeds. Construction of a boardwalk to take hikers along the north side of the gator pond is expected to be complete in 2013. For more information on these practices contact our department or our partner the Florida Forest Service.

## Plants and animals

DJ Wilcox is home to many varieties of plants and wildlife. Commonly seen wildlife include American alligator, brown pelican, osprey, red-shouldered hawk, white ibis, herons, egrets, the endangered wood stork, roseate spoonbills and many more.



Osprey Nests, (see osprey)



American Alligator, *Alligator mississippiensis*



Red-shouldered Hawk, *Buteo lineatus*



DJ Wilcox Trail

## Enjoy

Hiking, nature study, photography, and wildlife viewing. Use DJ Wilcox Preserve at your own risk. Be aware of uneven slippery terrain and trip hazards.

Always be prepared for the Florida heat, sudden thunderstorms/lightning & wildlife.

Call 911 in case of an emergency.

To ensure public safety and environmental protection, the following are not allowed:

- Motorized vehicles;
- Littering/destruction of property;
- Tripping, hunting, feeding, disturbing, or releasing wildlife;
- Removal of plants, animals, archeological or cultural resources.

While visiting the property, please keep pets on a leash.

Pack: water, snacks, sunscreen, insect repellent, a cell phone when venturing onto trails.

This site is open from **Sunrise to Sunset**.

For more information about this conservation area or other lands managed by St. Lucie County Environmental Resources, please scan the below QR symbol or contact us at:

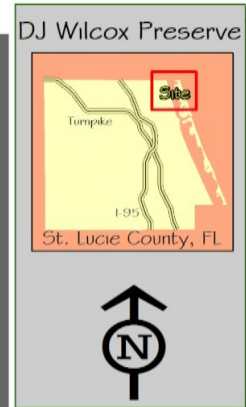
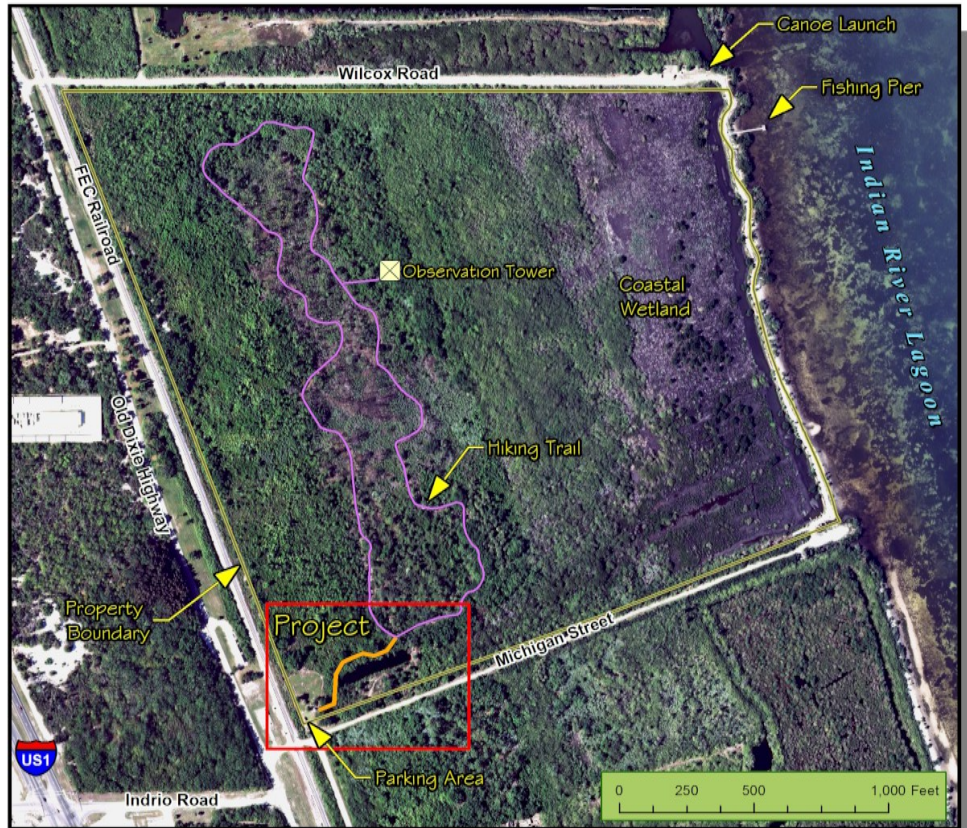
St. Lucie County Environmental Resources  
2300 Virginia Avenue  
Ft. Pierce, FL 34982  
(772) 462-2526



It takes your tax dollars to clean up vandalism and litter on public lands.

Please help keep this area clean — Pack trash out with you!





THIS TO BE AN UNLESS SHOWN ON PLANS BY LUCIE COUNTY THE RIGHT TO MAKE MINOR REVISIONS TO THE BOARDWALK LAYOUT TO TAKE ADVANTAGE OF SITE AVAILITIES.

OR TO COORDINATE CONSTRUCTION ACCESS HAS ALREADY WITH ST. LUCIE COUNTY, PRIOR TO COMMENCEMENT OF CONSTRUCTION.

1 L-2 2 L-2 3 L-2 4 L-2

REFER TO THE DETAILS CONTRACTOR TO PROVIDE STRUCTURAL DRAWINGS FOR CONSTRUCTION OF BOARDWALK (TYP.)

7 L-2

EXISTING TREE TO REMAIN (TYP.) FROM THE SURFACE FOR TREE WITHIN 20' OF UNITS OF CONSTRUCTION.

CONVENTIONAL WETLAND AREA DUE TO HITCHCOCK ALTERATION 87,023.13 SF

7 L-1

REFER TO BOARDWALK LAYOUT CHART FOR CENTERLINE BEARING, ANGLE & NORTHING/EASTING COORDINATES (TYP.)

1 L-3 2 L-3 3 L-3

CONCRETE PAD ELEV. +6.00 REFER TO SHEET L-4 FOR DETAILS

5 L-2

CONCRETE PAD ELEV. +6.0

1 L-3 2 L-3 3 L-3

CONCRETE PAD ELEV. +6.00 REFER TO SHEET L-4 FOR DETAILS

5 L-2

CONCRETE PAD ELEV. +6.0

1 L-3 2 L-3 3 L-3

CONCRETE PAD ELEV. +6.00 REFER TO SHEET L-4 FOR DETAILS

5 L-2

CONCRETE PAD ELEV. +6.0

1 L-3 2 L-3 3 L-3

CONCRETE PAD ELEV. +6.00 REFER TO SHEET L-4 FOR DETAILS

5 L-2

CONCRETE PAD ELEV. +6.0

1 L-3 2 L-3 3 L-3

CONCRETE PAD ELEV. +6.00 REFER TO SHEET L-4 FOR DETAILS

UNITS OF CONSTRUCTION

5 L-4

CONCRETE PAD ELEV. +6.0

8 L-4

HLT POLE (TYP.)

1 L-3 2 L-3 3 L-3

CONCRETE PAD ELEV. +6.00 REFER TO SHEET L-4 FOR DETAILS

EXISTING TOPOGRAPHIC ELEVATIONS (TYP.)

WIDE HARDWOOD 85,893.98 SF

UTLTIAR SHEL 887.17 SF

WIDE HARDWOOD 85,893.98 SF

UTLTIAR SHEL 887.17 SF

WIDE HARDWOOD 85,893.98 SF

UTLTIAR SHEL 887.17 SF

WIDE HARDWOOD 85,893.98 SF

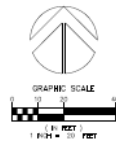
UTLTIAR SHEL 887.17 SF

WIDE HARDWOOD 85,893.98 SF

UTLTIAR SHEL 887.17 SF

WIDE HARDWOOD 85,893.98 SF

UTLTIAR SHEL 887.17 SF



BOARDWALK LAYOUT			BOARDWALK LAYOUT		
NORTHING/EASTING COORDINATES	ANGLE OF BOARDWALK AT CENTERLINE	ELEVATION AT CENTERLINE	NORTHING/EASTING COORDINATES	ANGLE OF BOARDWALK AT CENTERLINE	ELEVATION AT CENTERLINE
1 N 1183300.53	---	+6.00	10 N 1185549.12	418732'01"	+6.00
E 985348.54			E 968190.29		
2 N 1183362.53	419149'3"	+6.00	11 N 1185635.84	417120'34"	+6.00
E 985022.41			E 969200.88		
3 N 1183378.27	418253'50"	+6.00	11A N 1185556.80	---	+6.00
E 985043.33			E 968205.53		
4 N 1183468.67	415327'4"	+6.00	11B N 1185584.35	---	+4.70
E 985045.82			E 968233.53		
5 N 1183445.84	414332'58"	+6.00	12 N 1185668.49	418753'14"	+4.70
E 985037.41			E 968211.77		
6 N 1183500.13	413847'41"	+6.00	12A N 1185573.44	---	+4.70
E 985046.29			E 968241.51		
7 N 1183530.97	415611'16"	+6.00	12B N 1185598.41	---	+4.70
E 985033.04			E 968242.78		
8 N 1183535.85	416548'56"	+6.00	13 N 1185608.89	418212'20"	+3.40
E 985038.58			E 968233.14		
9 N 1183548.52	415748'11"	+6.00	14 N 1185610.72	---	+3.40
E 985051.14			E 968252.05		

TABLE OF BOARDWALK CENTERLINE MEASURED FROM INSIDE ANGLE SEE DIAGRAM (RIGHT)

1 L-1

BOARDWALK LAYOUT CHART

SITE PLAN - 100% PLANS, NOT FOR CONSTRUCTION

**DJ WILCOX PRESERVE**  
ST. LUCIE COUNTY  
FOR: 6



PROJECT NO.	12-00057
SHEET NO.	L-1
DATE	5/21/12
SCALE	AS SHOWN



09/07/2011 1

09/07/2011 1:

09/07/2011

09/07/2011 13:08

09/07/2011 13:08









[https://www.youtube.com/watch?v=q5\\_Rp5Sugls&list=UU5caV\\_d8tOAH3ewx-B1EVqg](https://www.youtube.com/watch?v=q5_Rp5Sugls&list=UU5caV_d8tOAH3ewx-B1EVqg)



