



BLUE-GREEN ALGAL BLOOM WEEKLY UPDATE

Reporting September 20 - September 26, 2019

SUMMARY

There were 11 reported site visits in the past week (9/20 - 9/26), with all 11 site visits resulting in samples collected. Algal bloom conditions were observed by the samplers at four of the sites.

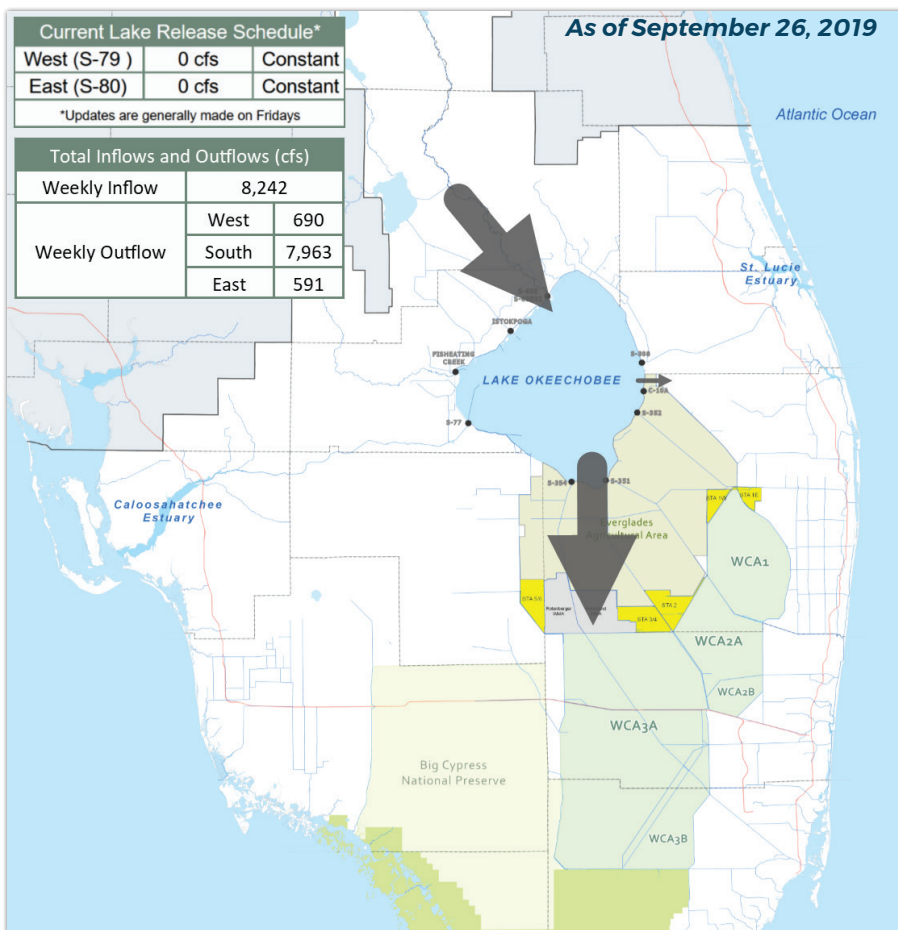
NOAA satellite imagery for Lake Okeechobee from 9/26 shows moderate bloom potential on the western third of the lake, with approximately 30% coverage. Imagery also indicated that estuaries remained free of bloom potential. South Florida Water Management District collected samples at the S79 structure on 9/23 and at the S308C structure on 9/25. There were no dominant species or toxins detected in either sample. Sampling on Lake Okeechobee was postponed until next week due to logistical problems.

Bloom samples were collected from Elevenmile Creek downstream from Mobile Highway as a result of a dog having played in the water at that location and subsequently dying. There was no dominated algal species in the sample and trace levels of total microcystins (1.09 parts per billion) were detected. The Department of Health has issued an advisory for this location.

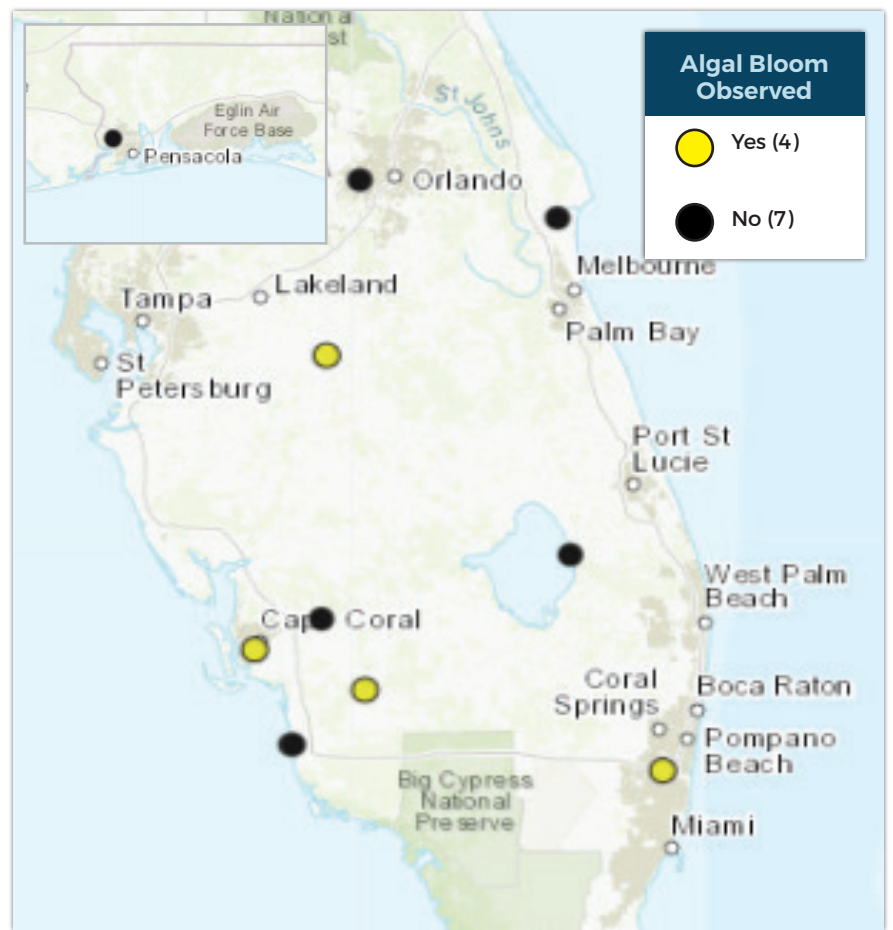
Eight bloom reports were received on DEP's Report Algal Blooms webpage this past week.

This is a high-level summary of the sampling events for the reported week. For all field visit and analytical result details, please refer the complete algal bloom map with data table by clicking the "Field and Lab Details" Quick Link from the Algal Bloom Dashboard. Different types of blue-green algal bloom species can look different and have different impacts. However, regardless of species, many types of blue-green algae can produce toxins that can make you or your pets sick if swallowed or possibly cause skin and/or eye irritation due to contact. We advise to stay out of water where algae is visibly present as specks, mats or water is discolored pea-green, blue-green or brownish-red. Additionally, pets or livestock should not come into contact with the algal bloom-impacted water, or the algal bloom material or fish on the shoreline.

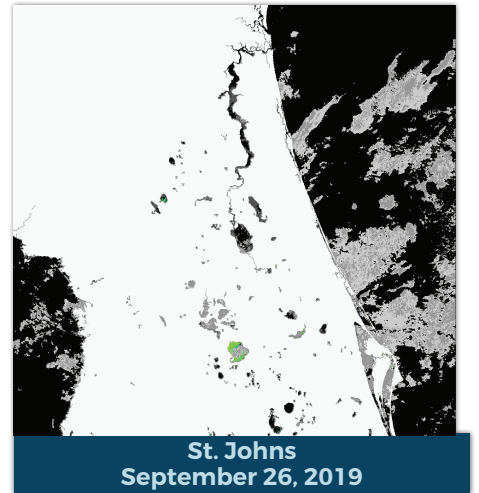
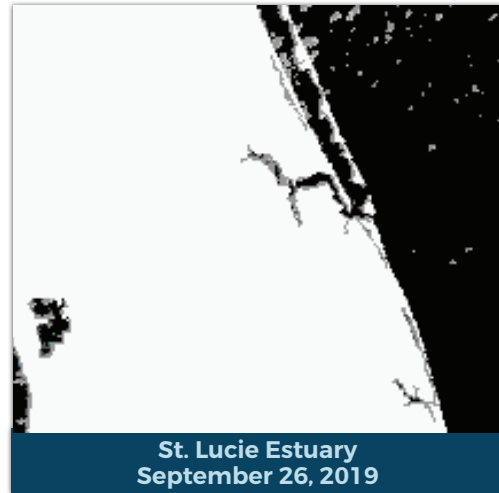
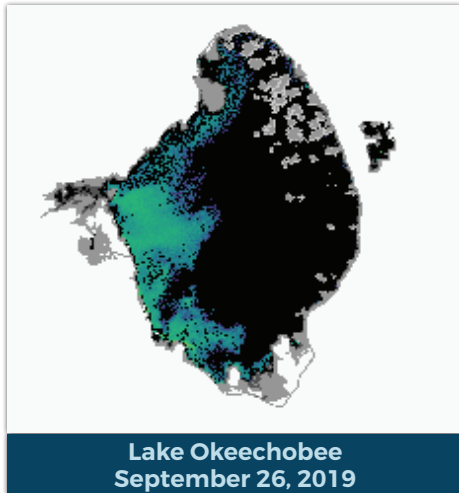
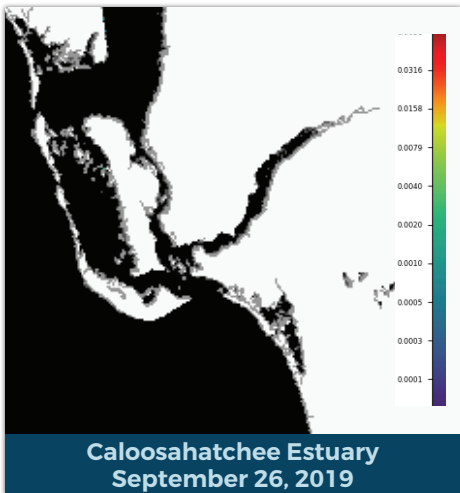
LAKE OKEECHOBEE OUTFLOWS



SITE VISITS FOR BLUE-GREEN ALGAE



Satellite Imagery provided by NOAA - Images are impacted by cloud-cover



REPORTS FROM HOTLINE



REPORT PUBLIC HEALTH ISSUES

HUMAN ILLNESS

Florida Poison Control Centers can be reached 24/7 at 800-222-1222
(DOH provides grant funding to the Florida Poison Control Centers)

OTHER PUBLIC HEALTH CONCERNS

CONTACT DOH
(DOH county office)
FloridaHealth.gov/all-county-locations.html

REPORT ALGAL BLOOMS

SALTWATER BLOOM

- Observe stranded wildlife or a fish kill
- Information about red tide and other saltwater algal blooms

CONTACT FWC
800-636-0511 (fish kills)
888-404-3922 (wildlife Alert)
MyFWC.com/RedTide

FRESHWATER BLOOM

- Observe an algal bloom in a lake or freshwater river
- Information about blue-green algal blooms

CONTACT DEP
855-305-3903
(to report freshwater blooms)
FloridaDEP.gov/AlgalBloom