



Florida Department of Environmental Protection

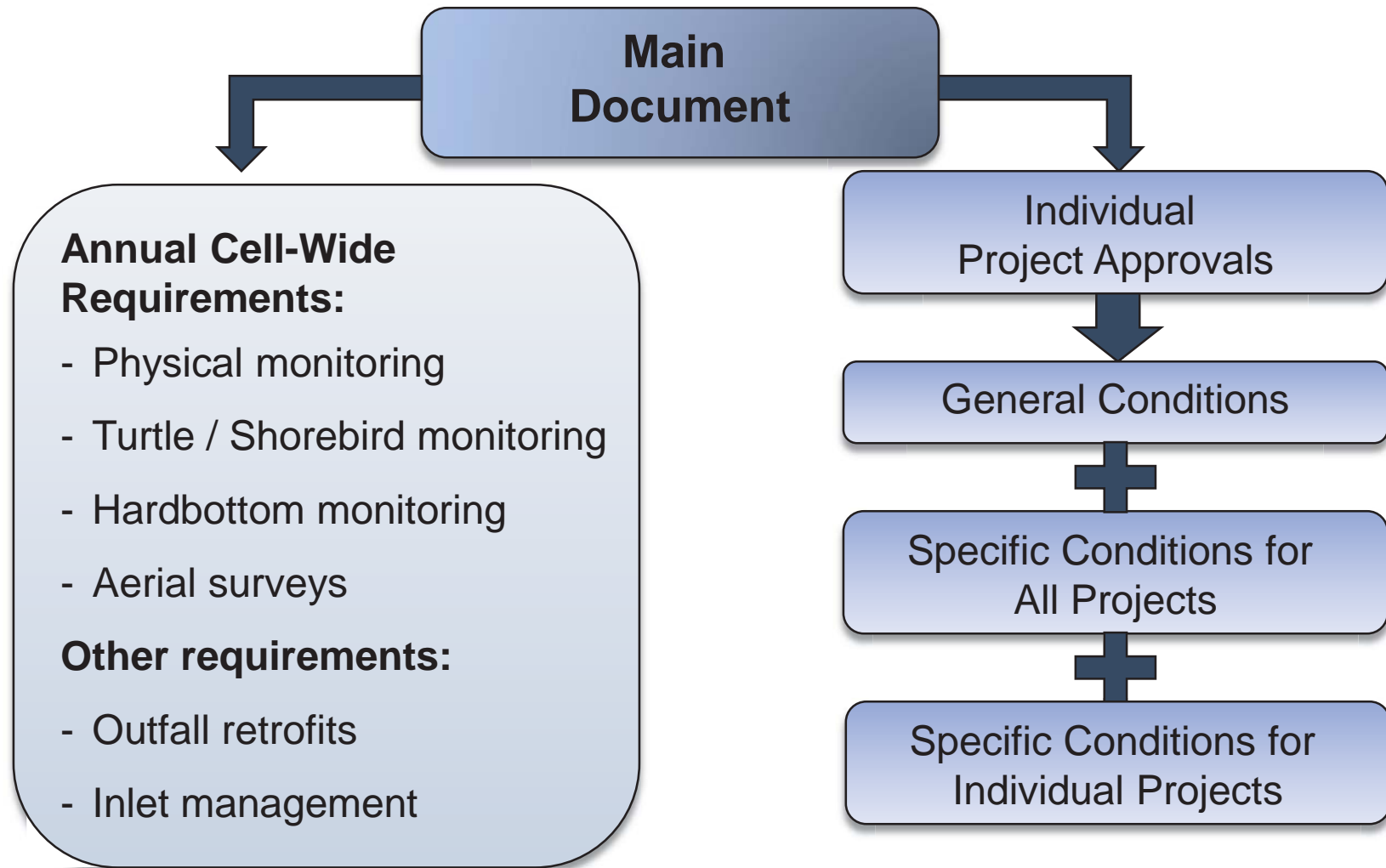
Beach Management Agreement Process Review

**Beaches, Inlets and Ports Program
December 7, 2016**





BMA Processes at Work





IPA Process



Individual Project Approval (IPA)

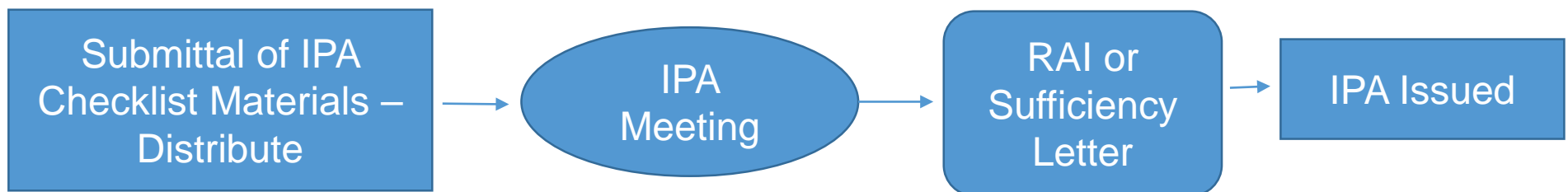
Similar to permitting process but faster and more streamlined

Check List
Appendix F of BMA
In-Water Projects
Dune Restoration

BMA
participants
and
reviewing
agencies

Completeness
cycle

Average
time to
issue
1-3
months





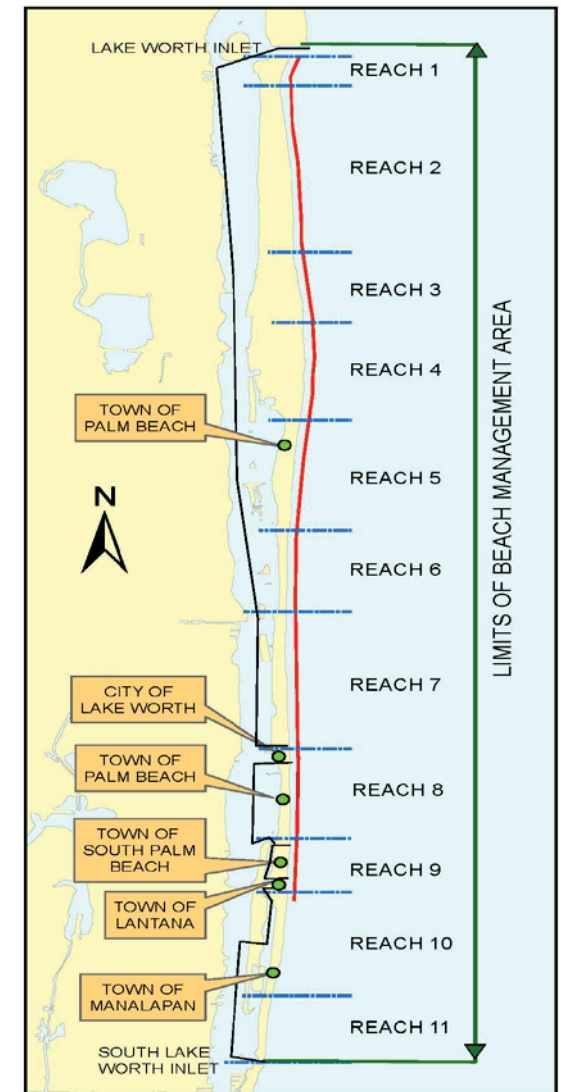
2016 Projects

IPA Requests:

- Dune Project throughout the area
 - Reaches 3 and 8
 - Requested 1/5/16
 - Issued 2/29/2016

Project Construction:

- Phipps Ocean Park Restoration
 - Two offshore BA
 - Nourishment of 1.2 miles shoreline
 - Optional dune feature
 - Optional stockpile
- Dune Restoration – Reaches 3 and 4





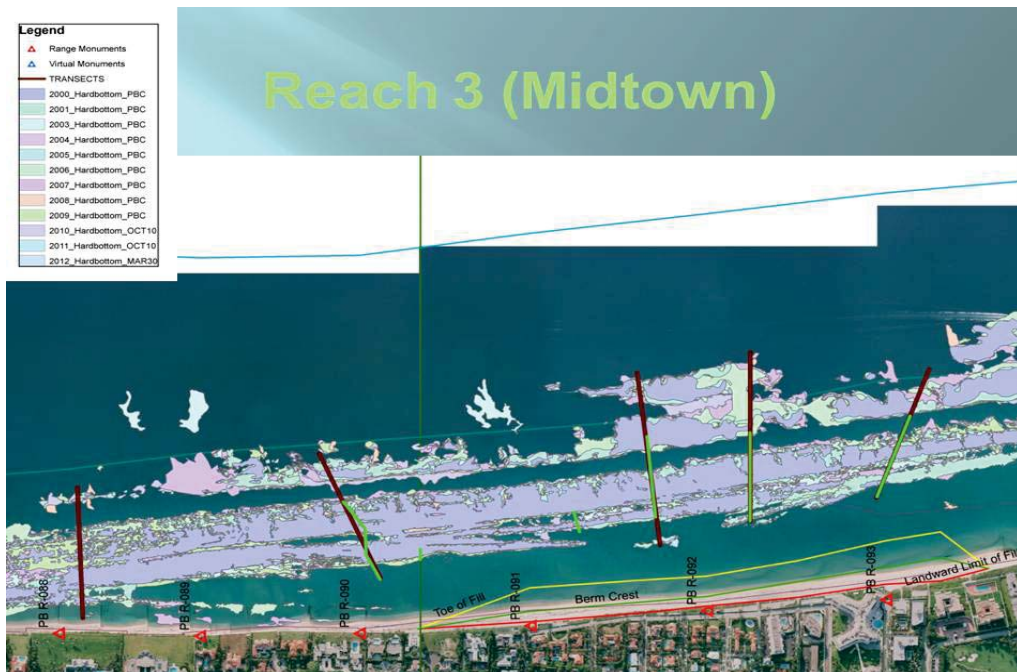
Regulatory Status

- IPA process working well in projects that were well defined and had been constructed previously before BMA issuance
- IPA process for new work/work without federal authorization – challenging
- U.S. Army Corps of Engineers (USACE) issuing separate permits:
 - Require stand alone monitoring plan
 - IPA needed for WQC prior to issuance
 - SPBO is updated to include loggerhead designated critical habitat but not red knott
- Adaptive management underway:
 - Slight project modifications addresses efficiently



Annual Monitoring

- Third cycle completed:
 - Physical Monitoring
 - Hardbottom Monitoring
 - Turtle / Shorebird Monitoring





Better Inlet Management

- Working to rehabilitate groins in area
- Possible increased beach sand placement template to the south for the Lake Worth Inlet maintenance dredging permit
- Continued Bypassing: sand transfer plant





Stormwater Outfall Removal





BMA Processes at Work

Project Approval and Implementation

- *Better interagency coordination*
- *Permitting process flexibility*
- *Expedited permitting*
- *Alternative monitoring and reporting requirements*
- *Coordinated permitting and inspections*
- *Informal resolution of compliance issues*

Annual Requirements / Net Ecosystem Benefits

- *Annual monitoring*
- *Stormwater retrofitting*
- *Better inlet management*





Upcoming BMA News

- Addition of Projects / Modification of BMA:
 - South Palm Beach Island Shoreline Stabilization
 - Expanded placement area of Lake Worth Inlet Maintenance dredged material
- Addition of new regulatory transects
- Updating of conditions and adaptive management
- 5-year hardbottom monitoring review - 2018



Questions / Updates

BMA Website (DEP):

<http://www.dep.state.fl.us/beaches/pb-bma/index.htm>

Department Contact:

Lainie Edwards, Ph.D.

Lainie.Edwards@dep.state.fl.us

850-245-7617