

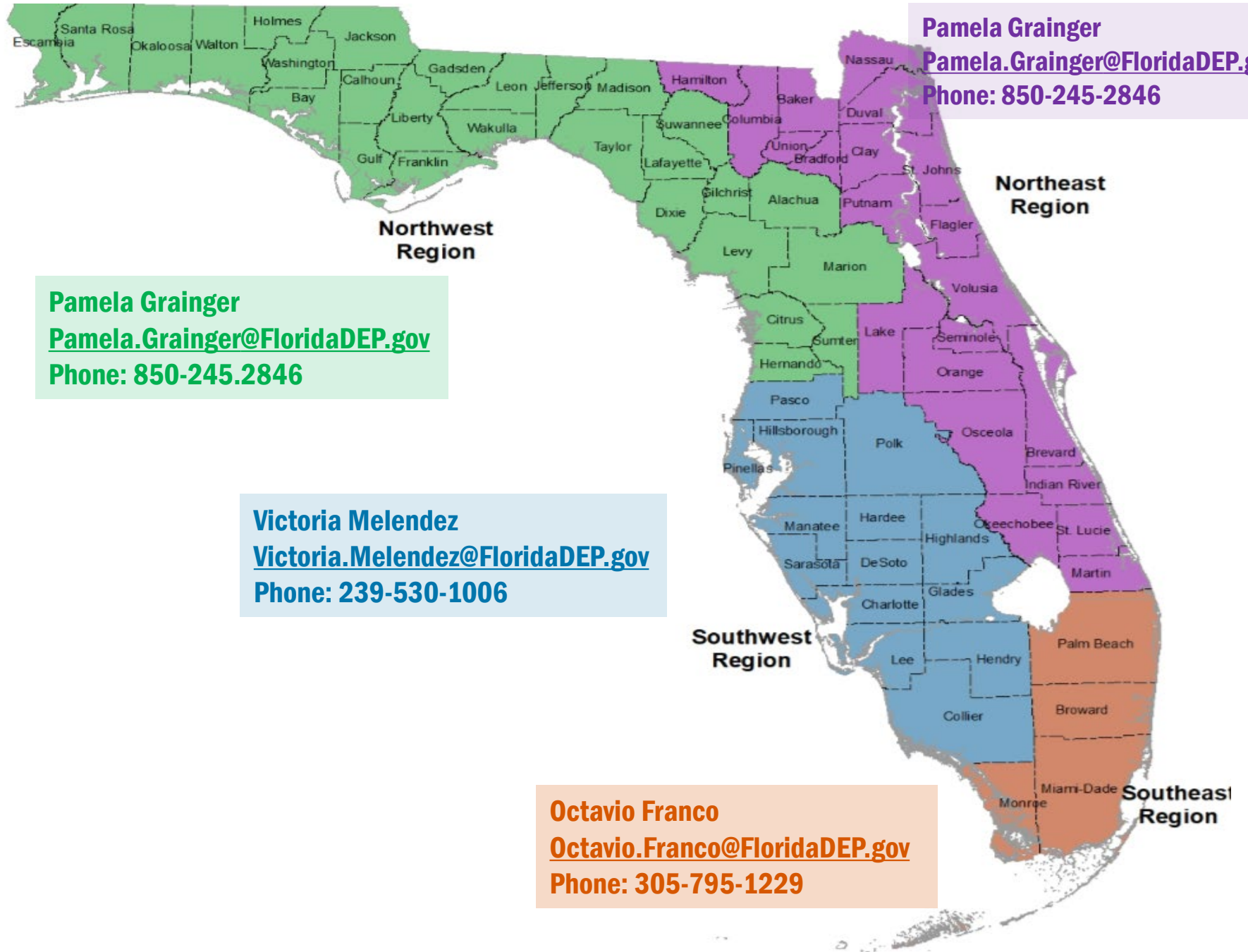


# Designation Process for Clean Marina and Clean & Resilient Marina

**Pamela Grainger, Program Manager**  
**Clean Boating Programs, Tallahassee, Florida**  
**850-245-2846 or [Pamela.Grainger@FloridaDEP.gov](mailto:Pamela.Grainger@FloridaDEP.gov)**



# Our Regional Coordinators



**Pamela Grainger**  
[Pamela.Grainger@FloridaDEP.gov](mailto:Pamela.Grainger@FloridaDEP.gov)  
Phone: 850-245-2846

**Pamela Grainger**  
[Pamela.Grainger@FloridaDEP.gov](mailto:Pamela.Grainger@FloridaDEP.gov)  
Phone: 850-245.2846

**Victoria Melendez**  
[Victoria.Melendez@FloridaDEP.gov](mailto:Victoria.Melendez@FloridaDEP.gov)  
Phone: 239-530-1006

**Octavio Franco**  
[Octavio.Franco@FloridaDEP.gov](mailto:Octavio.Franco@FloridaDEP.gov)  
Phone: 305-795-1229



# What is the Clean Marina Program?

A voluntary designation program that stresses environmental and managerial best management practices (BMPs) that exceed regulatory requirements. Marinas, boatyards and retailers are encouraged to incorporate these BMPs at their facilities to:

- ✓ Reduce pollution and improve waterways.
- ✓ Protect fish and wildlife habitat.
- ✓ Promote environmentally sound practices.

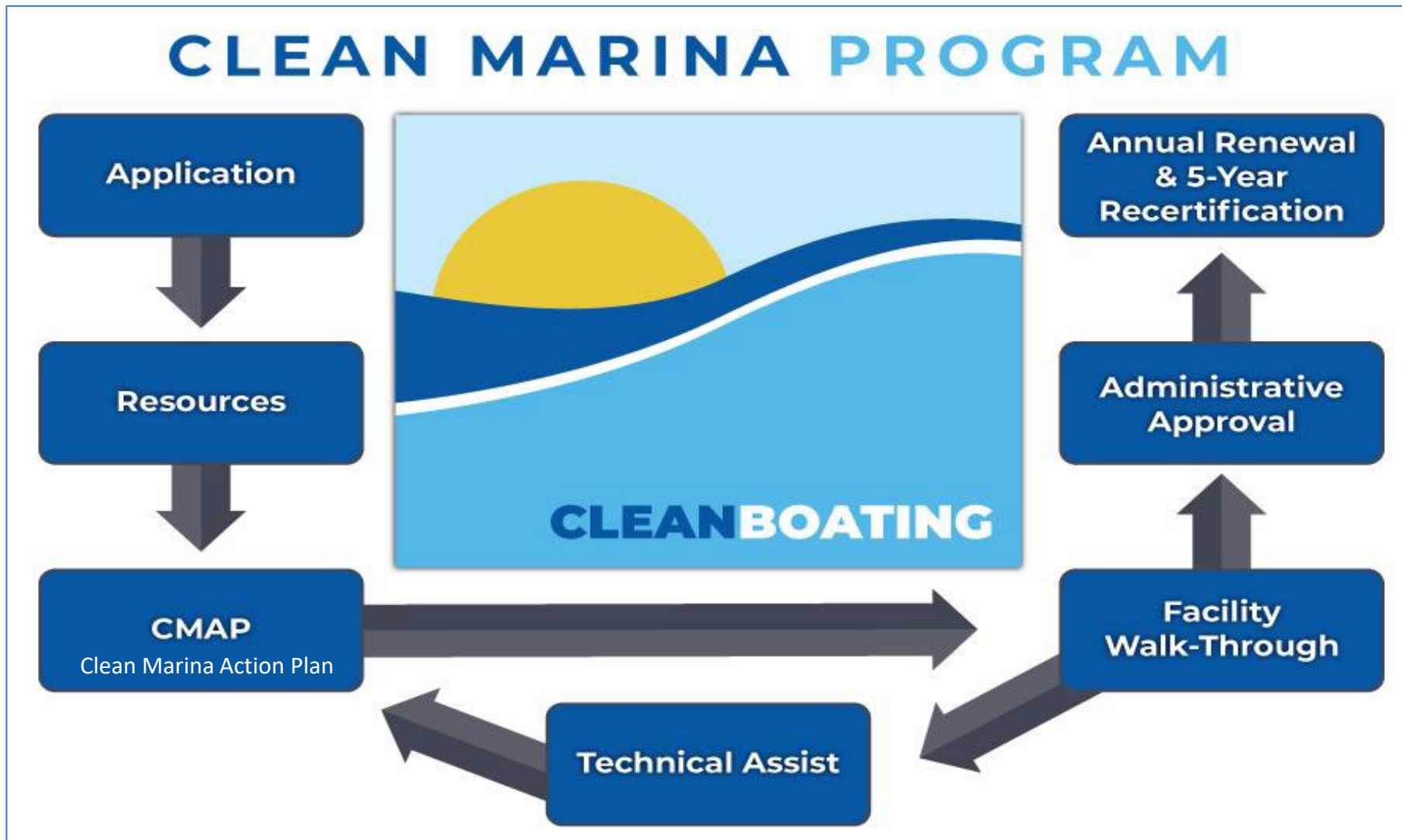


# Benefits to Being Designated

- ✓ State lands discount.
- ✓ Certificate and flag to display.
- ✓ Grant funds for pumpouts.
- ✓ Spill clean-up supplies.
- ✓ Listed on DEP website.
- ✓ Attract and keep customers.
- ✓ Technical assistance.
- ✓ Compliance assistance:
  - Stormwater regulations.
  - Wastewater regulations.
  - Hazardous waste.
  - Storage tanks.



# Designation Process





# Criteria Needed for Designation



## Environmental Management

- Compliance with regulatory requirements.
- Resource personnel and trained marina staff.
- Protects sensitive habitats.
- Initiates and promotes sustainability.



## Environmental Quality

- Marina is clean with no signs of oil sheen, sewage or litter.
- Discharge of raw sewage prohibited.
- Promote eco-friendly cleaners.
- Educate boaters.



## Environmental Services

- Clean restrooms.
- Docks and grounds well-maintained.
- Provide pumpout services.
- Distribute educational materials to boaters.



# Getting Your Facility Designated

## File Review Stage (Lease/Permit )

A department file review or “compliance check” is done to verify permits are current with:

- State Lands.
- Storage tanks.
- Hazardous waste.
- National Pollutant Discharge Eliminations System (NPDES).
- Environmental Resource Permit (ERP).



# Designated Marinas **MUST**

## 100% COMPLIANCE

State Lands

Petroleum Tanks

Hazardous Waste

NPDES

ERP

## IMPLEMENT / SUBMIT

60% of the BMPs

CMP Application

CMAP Checklist

## ACTIVELY MAINTAIN

All Current Permits

5-Year Site Visits

5-Year Renewals





# What is Compliance?

Compliance is verification that all leases, fees, reporting, registrations and permits are current.

- ✓ **State Lands Lease** – Must pass inspection and be current with fees and reporting.
- ✓ **Storage tanks** – Must pass inspection and be current with fees.
- ✓ **Hazardous waste** – Must maintain records for at least three consecutive years.
- ✓ **NPDES** – Must pass inspection and be current with reporting if applicable.
- ✓ **ERP** – For current construction must have valid permit on file.



# Getting Your Facility Designated

## Site Visit Stage – What we look for?

**“Love My Marina”  
Emergency Action Plans**

**Hurricane Preparedness Plans?  
Evacuation Plans?  
Spill Prevention Plans?  
Fire Safety Plans?**

**Do you have a Resource Person?**

**Emergency Plans**



**Spill Kit**



**Containment Boom**



**Fire Extinguishers**



**Clear Docks**



**Clean Water**



# Getting Your Facility Designated

## Site Visit Stage – What we look for?



Tanks



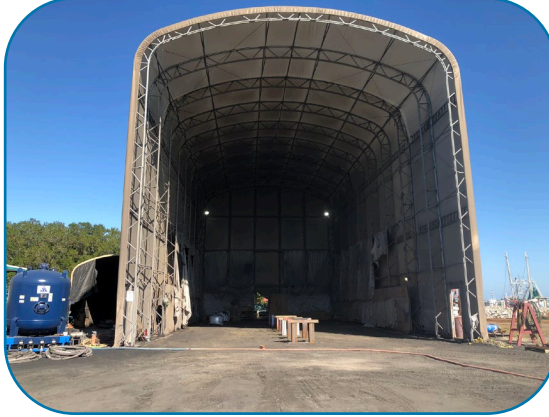
Hazardous Waste



Pressure Wash - Designated Area



Vessel Repairs / Shop Organized



Boat Painting



Sanding



# Getting Your Facility Designated

## Site Visit Stage – What we look for?



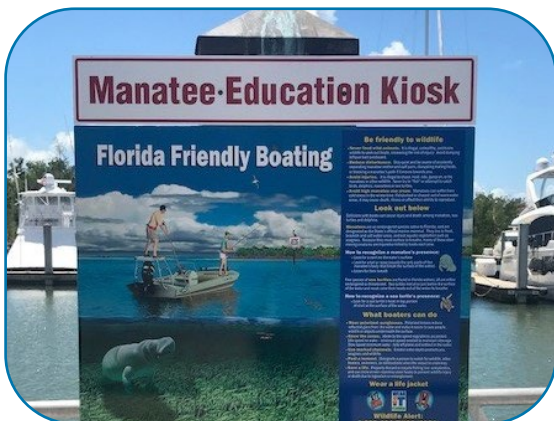
Pumpout Services



Restrooms / Laundry



Boater Education Station



Manatee Signs / Sensitive Habitats



Fish Clean Table w/ signage



Promote the use of Green Cleaners



# Getting Your Facility Designated

## Site Visit Stage – What we look for?



Recycle Bins



Trash Bins with lids



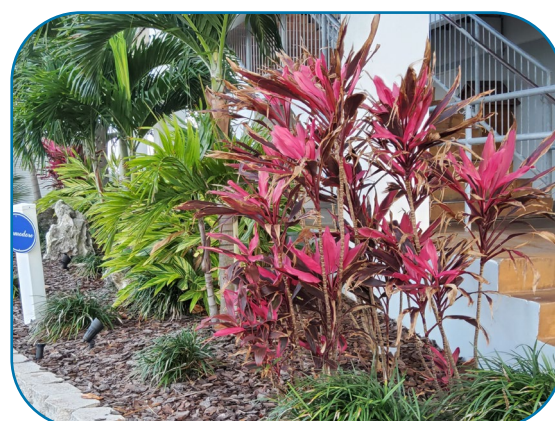
Do No Dispose signs



Pet Waste Station



Monofilament Bin

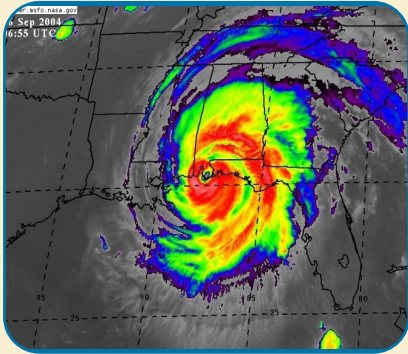


Landscaping



# What are BMPs?

Activities and strategies that help prevent or reduce water pollution. Examples:



## Emergencies

- Hurricane plan.
- Review hurricane procedures with staff.
- Post up-to-date emergency numbers.
- Keep fire extinguishers available.
- Train staff.



## Storage Tanks

- Promote use of fuel guards.
- Provide collection site for used absorbents.
- Inspect tanks regularly.
- Prohibit detergents and emulsifiers on fuel spills.



## Hazardous Waste

- Keep records for three years.
- Keep hazardous waste in drums or containers that are clearly label.
- Do not store large amounts of hazardous materials.



## Fish Waste

- Educate boaters.
- Establish fish-cleaning stations with trash receptacles.
- Encourage boaters to dispose fish guts offshore.



## Sewage

- Install pumpout connections at convenient locations.
- Develop regular inspections.
- Post signage for proper disposal.
- Encourage boaters to use shore-side facilities.



# Clean & Resilient Marina

**Octavio Franco, Clean Boating SE Regional Coordinator**  
**Clean Boating Programs, Miami, Florida**  
**786-798-4519 or [Octavio.Franco@FloridaDEP.gov](mailto:Octavio.Franco@FloridaDEP.gov)**



# What is Clean & Resilient?

The Gulf of Mexico Alliance (GOMA) initiative program complements Clean Marina practices already in place and provides additional recommendations to strengthen local marina's ability to withstand natural and human-made disasters.

**“Resilience is the capacity of human and natural and physical systems to adapt to and recover from change.”**

***Gulf of Mexico Alliance's Coastal Community Resiliency Team***





# Clean & Resilient Goals

To achieve designation, Clean & Resilient Marinas selectively implement a set of criteria designed to:

1. Protect human life and safety.
2. Reduce exposure of structures on water and land to damage.
3. Reduce exposure of boats to damage.
4. Minimize damage to property that cannot be relocated.
5. Resume business operations as quickly as possible.





# Resiliency at Marinas

- Emergency planning.
- Evacuation procedures.
- Design and siting.
- Floating docks.
- Concrete docks.
- Reinforced dry stack.



- Natural shorelines.
- Underground fuel tanks.
- Underground utilities.
- Trained dedicated staff.
- Stormwater management.
- Sewage handling.



# Resilient

## What we look for?



Evacuation Procedures



Emergency Preparedness Team



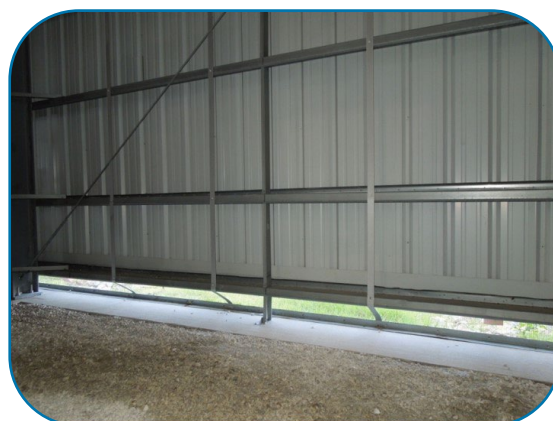
Floating and/or Cement Docks



Pilings - 70 ft & 16 in Diameter



Reinforced Dry Stacks



Vented to Equalize Pressure

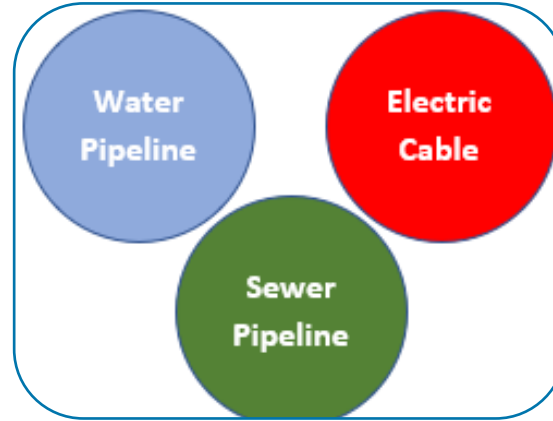


# Resilient

## What we look for?



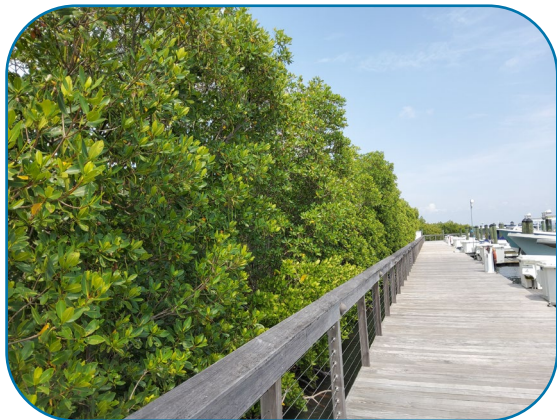
Underground Tanks



Underground Utilities



Buildings Withstand High Winds



Mangroves



Natural Shoreline



Sea Wall with Rocks Break Waves



# Clean & Resilient BMPs



## Marina Siting

- Piers and docks extend into naturally deep waters.
- Fuel tanks are located onshore.
- Dry storage racks are adequately anchored to bear hurricane winds.

## Emergency Preparedness

- Have active emergency preparedness team.
- Boat owners' requirements defined in case of emergency.
- Require boaters to carry insurance.

## Evacuation

- Have active evacuation plan for hurricanes.
- Ability to mobilize large number of boats in short amount of time.
- Established wet slip evacuation procedures.

## Stormwater and Erosion

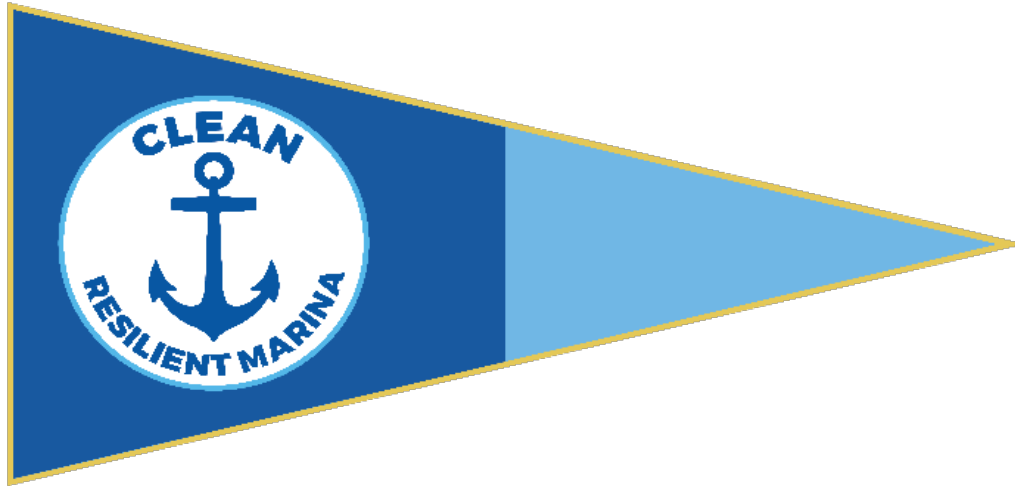
- Stormwater treated for pollutant removal onsite.
- Natural erosion protection is used where possible to limit damage to shoreline.

## Education and Outreach

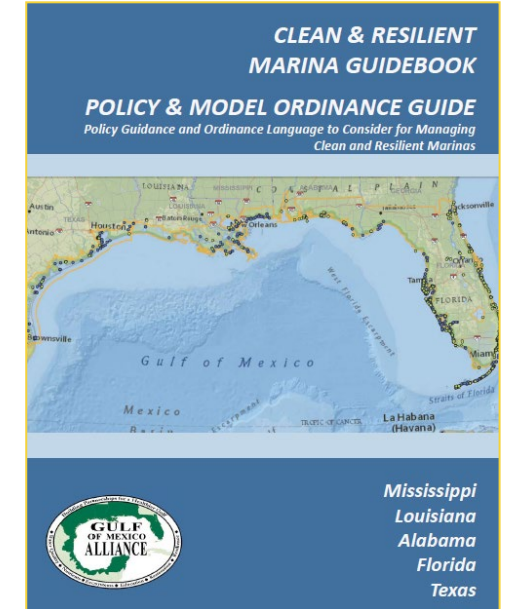
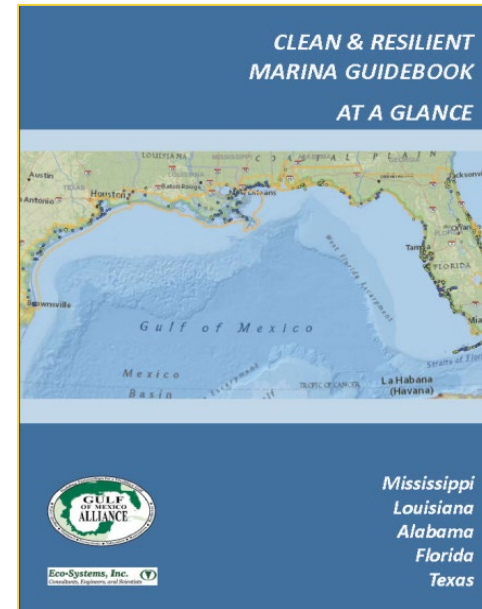
- No-wake zones are clearly defined.
- Provide boaters educational materials on proper boat cleaning.
- Post clearly labeled facility and vicinity maps with evacuation routes.



# Florida Clean & Resilient Marinas



Florida encourages currently designated facilities to add the extra level of resiliency to their certification. We have designed a flag specific for it. The designation process is the same as the Clean Marina. However, the facility must implement additional levels of best management practices. These are listed in Part 3 of our CMAP.

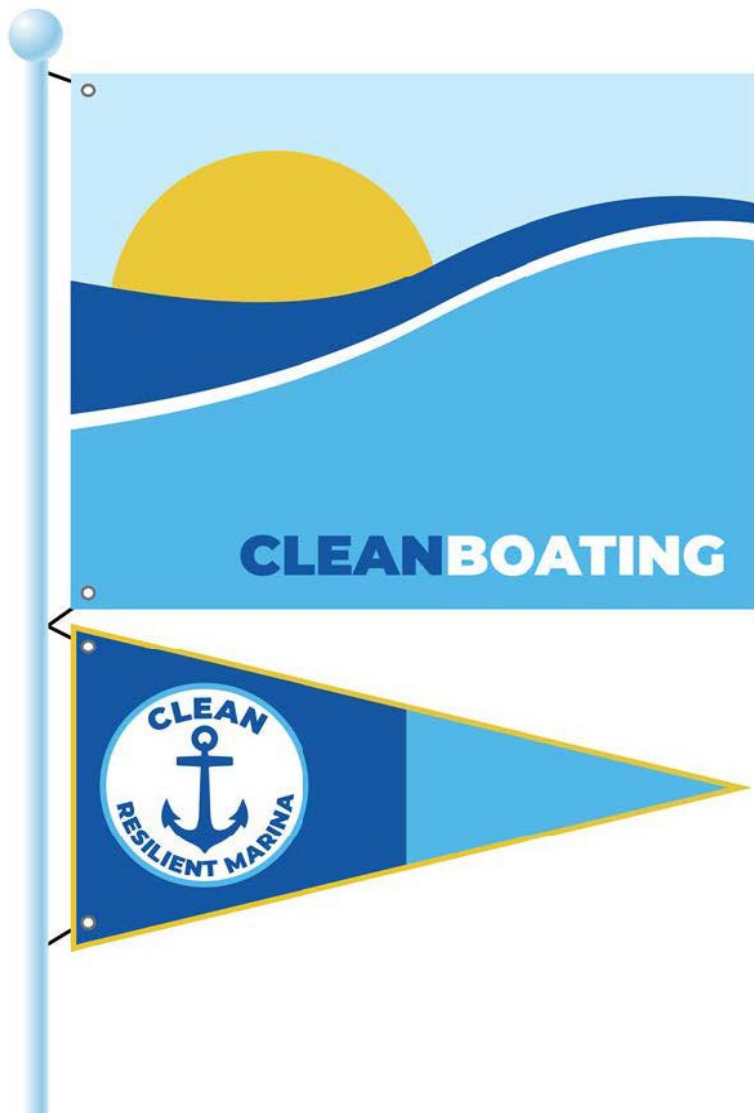


The GOMA team created resilient guidebooks. For a more detailed review of the resilient steps, visit our [website](#):

- Guidebook “At A Glance.”
- Policy Guide.
- Volume I Marina Guidebook.
- Volume II: Appendices.



# Designated Facilities Receive







# Clean Boater Program and Educational Resources

**Victoria Melendez, Clean Boating SW Regional Coordinator**  
**Clean Boating Programs, Fort Myers Beach, Florida**  
**239-530-1006 or [Victoria.Melendez@FloridaDEP.gov](mailto:Victoria.Melendez@FloridaDEP.gov)**





# Boater Education and Outreach

 **Clean Boating Pledge** 

As a participating member of the Florida Clean Boating Program, I pledge to do my part in keeping Florida's waterways clean. I will identify opportunities and implement practices to prevent pollution associated with my boating activities such as fueling, cleaning and washing, sewage management and boat maintenance. I will ensure that all passengers aboard my vessel follow the guidelines and maintain a clean boating environment.

**As a Clean Boater I Pledge To:**

- Dispose of recyclables at marked containers on land. Use a trash bag and keep Florida's waterways free of litter
- Practice proper fueling techniques
- Use pumpout facilities
- Support Florida Clean Marinas, Clean Boatyards and Clean Marine Retailers whenever possible
- Promote clean boating habits and the Clean Boating Program to fellow boaters
- Remember that a clean environment **always** starts with **me**

First Name: \_\_\_\_\_

Last Name: \_\_\_\_\_

Street Address: \_\_\_\_\_  
\_\_\_\_\_

Email Address: \_\_\_\_\_

\_\_\_\_\_  
*Signature*                      *Date*

We provide educational materials and pledge cards to marinas at no cost.

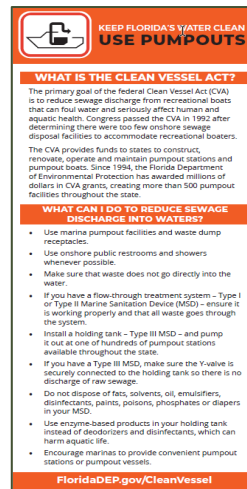
Our Clean Boater Pledge is available online.

[FloridaDEP.gov/CleanBoater](http://FloridaDEP.gov/CleanBoater)



# Boater Education and Outreach

Pledgers receive a drawstring bag, boating habits, decal and rack card to learn about the importance of keeping our waters clean. We send these materials to marinas to hand out to their boaters as well.

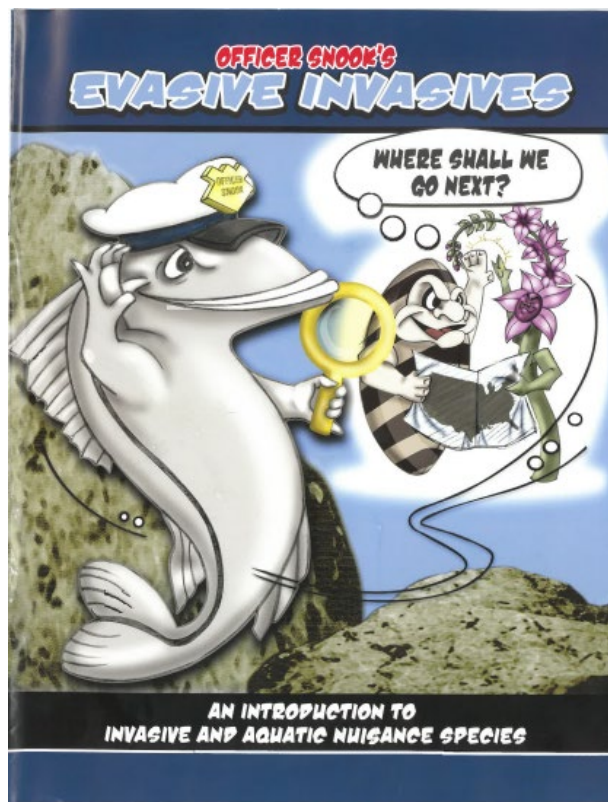




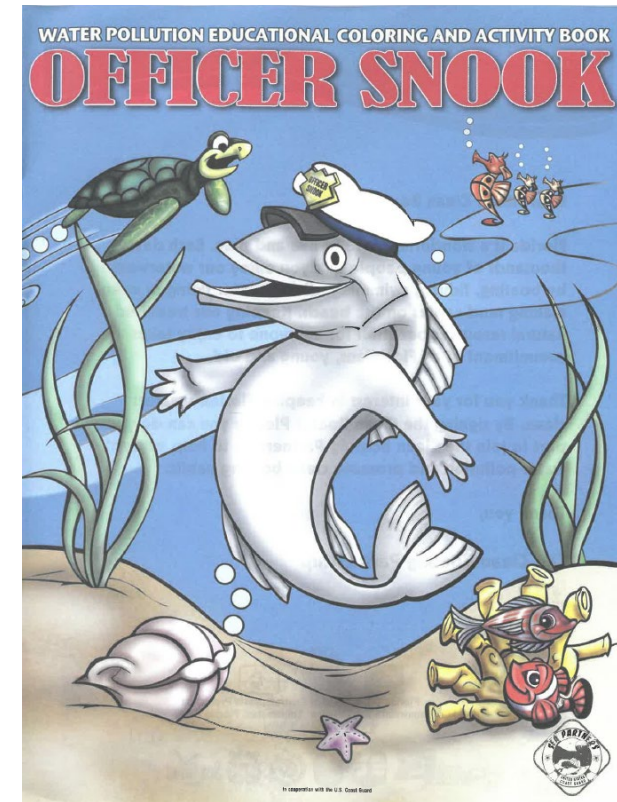
# Educational Books for Youth



Future Boaters



Invasives



Water Pollution



# Educational Resources – *New Signs*

## PROTECT FLORIDA'S WATERWAYS Prevent Petroleum Pollution

- Always monitor fueling operations. Don't top off your tank – fill only to 90%.
- Clean up any spills immediately with rags or other absorbent materials.
- Do not hose off spilled fuel into the water.
- Do not use soap or detergents on spills. This makes the problem worse and violates federal law.
- Equip your vessel with fuel/air separators and whistling vents.
- Fuel your boat on the upland whenever possible.



Report spills to the State Watch Office  
at 800-320-0519

*It's against federal law to discharge any amount of fuel,  
oil or other petroleum product into U.S. waters.*



[FloridaDEP.gov/CleanBoater](http://FloridaDEP.gov/CleanBoater) · [FloridaDEP.gov/CleanMarina](http://FloridaDEP.gov/CleanMarina)

## PROTECT FLORIDA'S WATERWAYS Practice Clean Boating Habits

### ENGINE & BILGES

- Keep engines tuned and in good working condition.
- Recycle or dispose of used oil, fuel, oil filters and batteries in marina collection waste containers or your nearest recycling center.
- Maintain a clean, dry bilge. Use absorbent bilge pads to soak up oil and fuel.
- Do not discharge bilge water if there is sheen in it.

### PAINT, VARNISH & CHEMICALS

- Keep unnecessary chemicals off dock when not in use.
- Always mix paint and epoxy over a tarp.
- Purchase paint or chemicals only in quantities needed for a specific project.
- Dispose of chemicals at local hazardous waste collection sites.
- Do not store fuels or solvents on docks or finger piers.

### SEWAGE

- Use onshore pumpout facilities and waste dump receptacles to reduce or eliminate the discharge of sewage into waters.
- Do not discharge any sewage – even treated sewage – while moored in the marina. Never discharge untreated sewage into U.S. territory waters.
- Follow the instructions when using and maintaining a marine sanitation device.
- Whenever possible, use restrooms and showers provided on land.

### SOLID WASTE DISPOSAL

- Limit the amount of packaging and plastic you take aboard.
- Recycle aluminum, plastic, paper, glass, cardboard and monofilament line, and properly dispose of any fishing gear you can safely retrieve from the water.
- Do not discard cigarette butts over the side.
- Do not throw fish waste into the water near the marina basin.

All hazardous waste must be disposed of properly.  
Contact marina management for nearest recycling  
and disposal locations.



[FloridaDEP.gov/CleanBoater](http://FloridaDEP.gov/CleanBoater) · [FloridaDEP.gov/CleanMarina](http://FloridaDEP.gov/CleanMarina)

## PROTECT FLORIDA'S WATERWAYS Keep Boat Bilges Clean

- Never drain engine oil into the bilge.
- Repair engines and tank leaks immediately. Faulty equipment can damage marine habitats.
- Disable automatic bilge pumps while completing repairs.
- Use bilge socks or other absorbent material to ensure all oil is removed from bilge before discharging.
- Bilge water can transport plant and animal species to areas where they don't belong. Do not release plants, fish or animals into a waterbody unless they came from that waterbody.
- Use nontoxic products whenever possible to help protect human health and the environment.



[FloridaDEP.gov/CleanBoater](http://FloridaDEP.gov/CleanBoater) · [FloridaDEP.gov/CleanMarina](http://FloridaDEP.gov/CleanMarina)



# Marine Debris



We distribute marine debris bags to get the boating public more involved in assisting with picking up marine debris.

Boaters and divers remove trash along the beach or on the coastal floor.



# Environmental Spill Materials



Spill Kits



Bilge Socks



Containment Boom

Resources are provided to marinas to help protect the water and be prepared for an accidental spill.



**Thank you!**

**Pamela Grainger, 850-245-2846**

**Octavio Franco, 786-798-4519**

**Victoria Melendez, 239-530-1006**