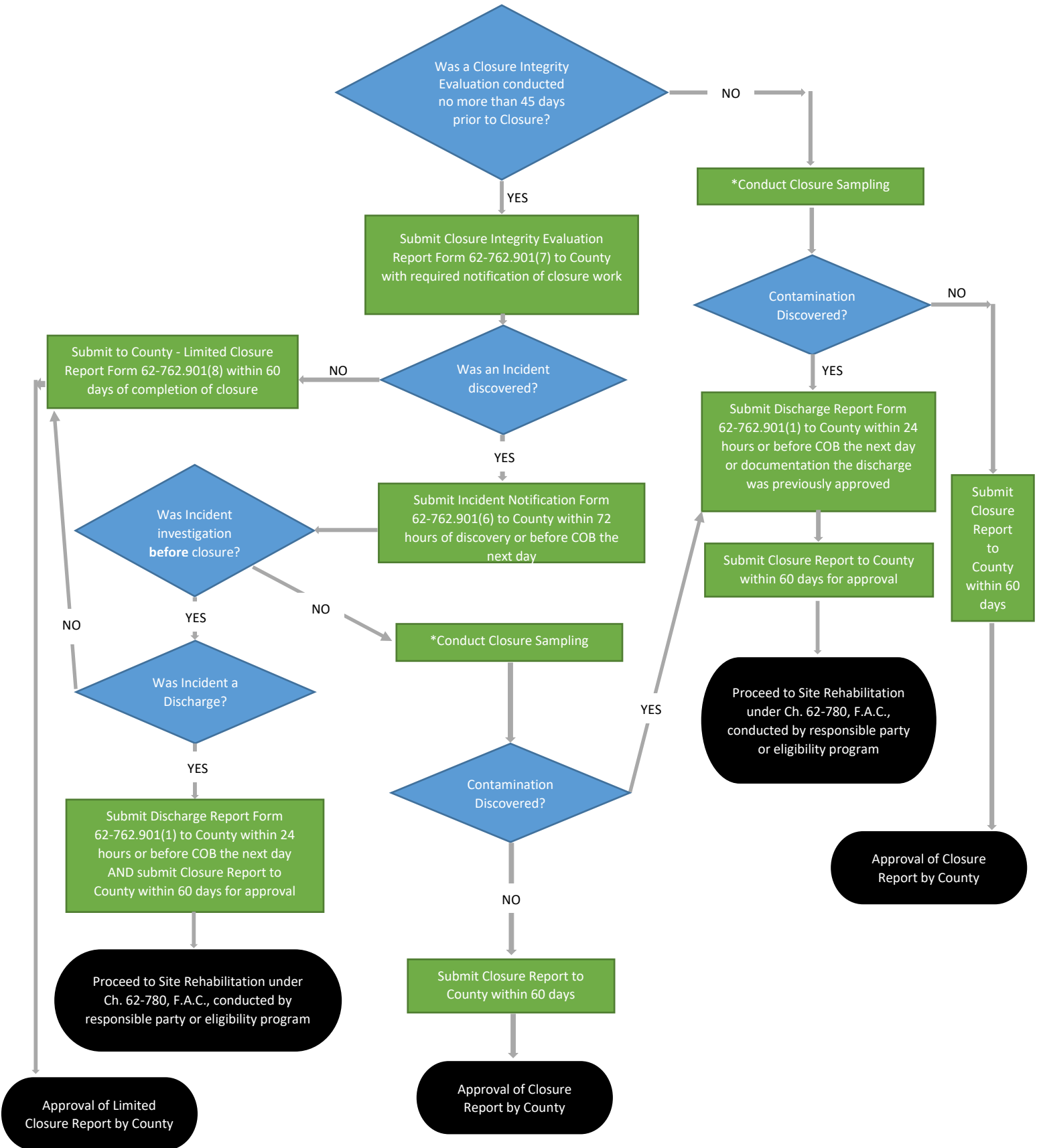


# Closure of Aboveground Storage Tank Systems and System Components

## CLOSURE INTEGRITY EVALUATION / SAMPLING PROCESS (Tanks and/or Components in Contact with the Soil)



\*Conduct Closure Sampling means investigation required in accordance with the guidance document – *Instructions for Conducting Sampling During Aboveground Storage Tank Closure, April 2016 Edition.*