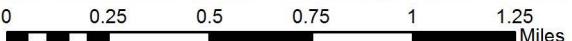


HCC FIRE TRAINING FACILITY
5610 E COLUMBUS DR
TAMPA, FL 33619



PFAS Sample Results

- ★ >HAL
- ★ >1/2 HAL
- >1/4 HAL
- <1/4 HAL
- ▲ BDL
- ⊙ No Sample for this Analysis

Wells PFAS Level

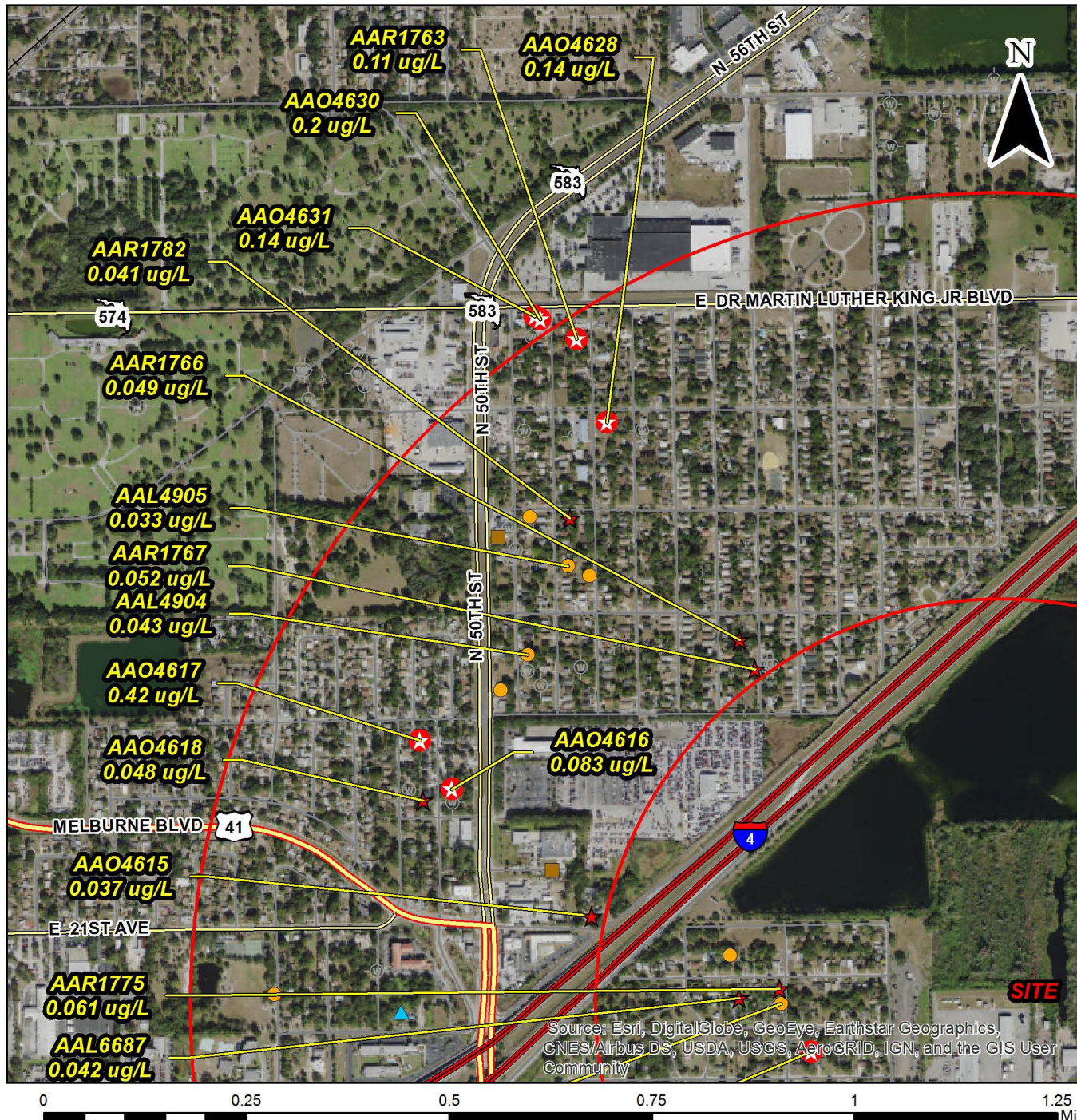
- 25 >HAL
- 23 >1/2 HAL
- 12 >1/4 HAL
- 11 <1/4 HAL
- 4 Below Detection



Florida Department of Health
Bureau of Environmental Health

Disclaimer
This product is for reference purposes only and is not to be construed as a legal document. Any reliance on the information contained herein is at the user's own risk. The Florida Department of Health and its agents assume no responsibility for any use of the information contained herein or any loss resulting therefrom.

HCC FIRE TRAINING FACILITY
5610 E COLUMBUS DR
TAMPA, FL 33619



PFAS Sample Results

- ★ >HAL
- ★ >1/2 HAL
- >1/4 HAL
- <1/4 HAL
- ▲ BDL
- ⊖ No Sample for this Analysis

Wells PFAS Level

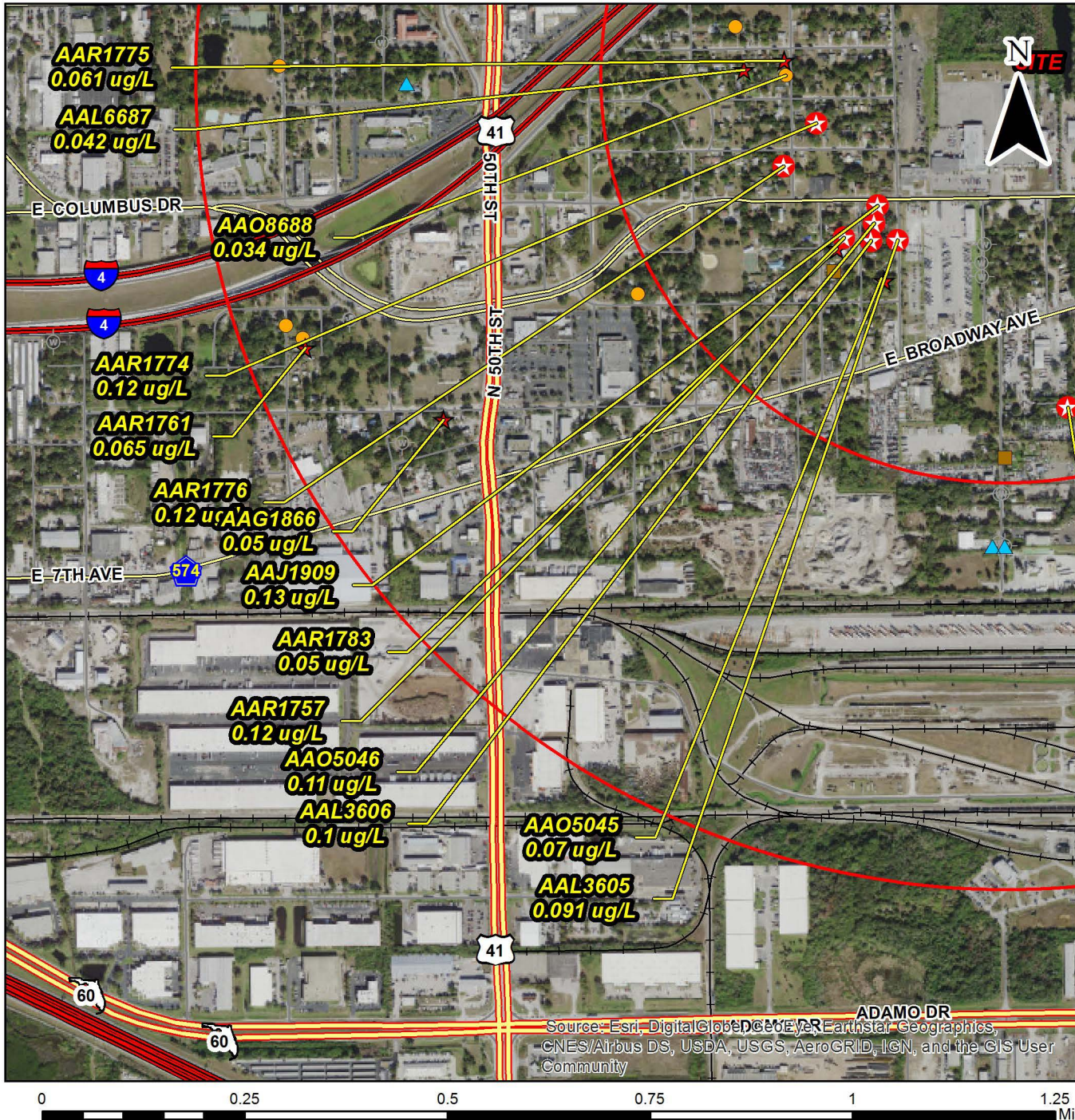
Wells	PFAS Level
25	>HAL
23	>1/2 HAL
12	>1/4 HAL
11	<1/4 HAL
4	Below Detection



Florida
Department of Health
Bureau of
Environmental Health

Disclaimer
This product is for reference purposes only and is not to be construed as a legal document. Any reliance on the information contained herein is at the user's own risk. The Florida Department of Health and its agents assume no responsibility for any use of the information contained herein or any loss resulting therefrom.

HCC FIRE TRAINING FACILITY
5610 E COLUMBUS DR
TAMPA, FL 33619



PFAS Sample Results

- ★ >HAL
- ★ >1/2 HAL
- >1/4 HAL
- <1/4 HAL
- ▲ BDL
- ⊖ No Sample for this Analysis

Wells PFAS Level

Wells	PFAS Level
25	>HAL
23	>1/2 HAL
12	>1/4 HAL
11	<1/4 HAL
4	Below Detection









**Florida Department of Health
 Bureau of Environmental Health**

Disclaimer
 This product is for reference purposes only and is not to be construed as a legal document. Any reliance on the information contained herein is at the user's own risk. The Florida Department of Health and its agents assume no responsibility for any use of the information contained herein or any loss resulting therefrom.

Date: 10/11/2019

HCC FIRE TRAINING FACILITY
5610 E COLUMBUS DR
TAMPA, FL 33619

PFAS Sample Results

-  >HAL
-  >1/2 HAL
-  >1/4 HAL
-  <1/4 HAL
-  BDL
-  No Sample for this Analysis

Wells PFAS Level

- 25 >HAL
- 23 >1/2 HAL
- 12 >1/4 HAL
- 11 <1/4 HAL
- 4 Below Detection



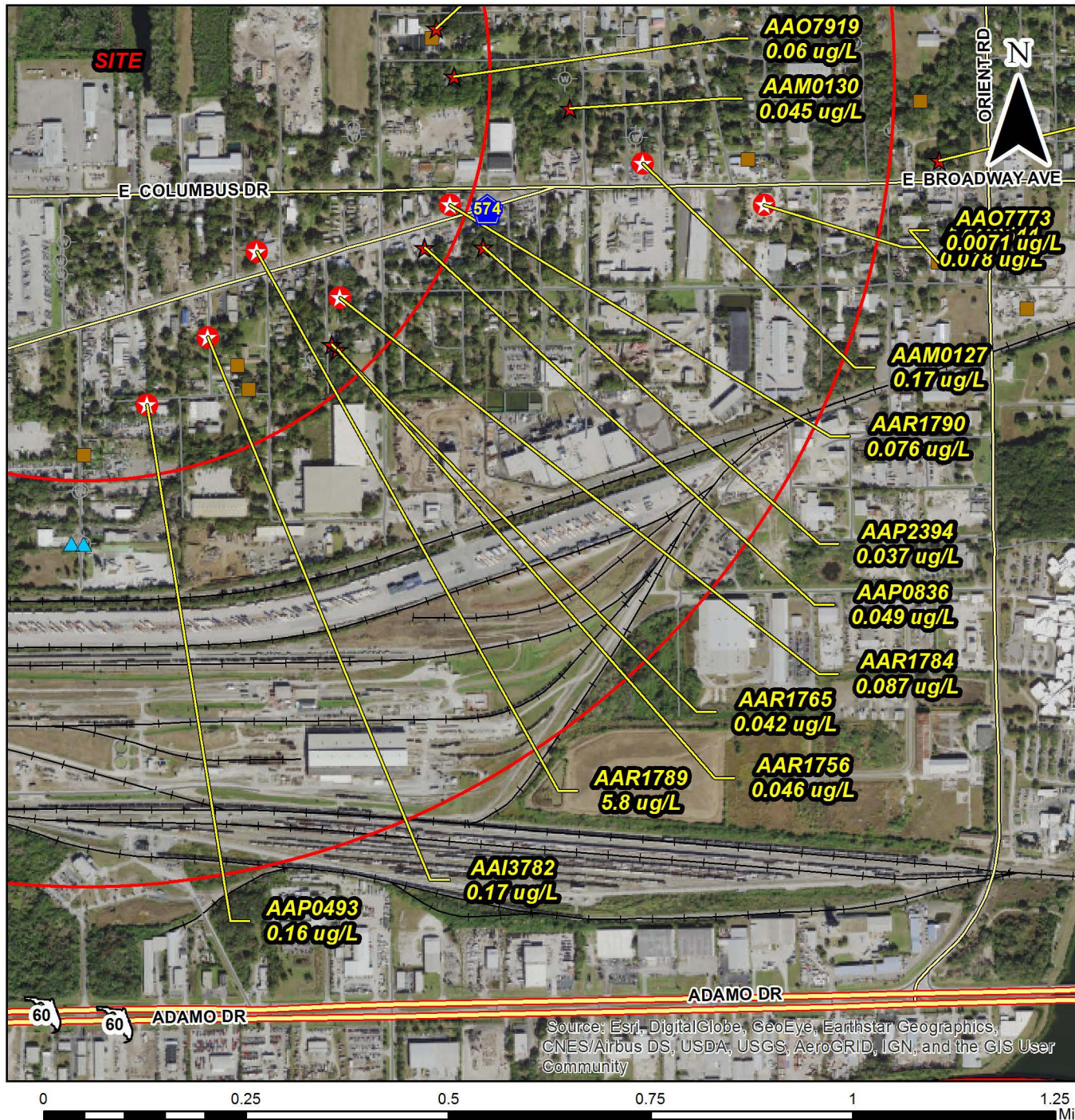
Florida
Department of Health
Bureau of
Environmental Health

Disclaimer

This product is for reference purposes only and is not to be construed as a legal document. Any reliance on the information contained herein is at the user's own risk. The Florida Department of Health and its agents assume no responsibility for any use of the information contained herein or any loss resulting therefrom.



HCC FIRE TRAINING FACILITY
5610 E COLUMBUS DR
TAMPA, FL 33619



PFAS Sample Results

- ★ >HAL
- ★ >1/2 HAL
- >1/4 HAL
- <1/4 HAL
- ▲ BDL
- ⊖ No Sample for this Analysis

Wells PFAS Level

Wells	PFAS Level
25	>HAL
23	>1/2 HAL
12	>1/4 HAL
11	<1/4 HAL
4	Below Detection



Florida
Department of Health
Bureau of
Environmental Health

Disclaimer
This product is for reference purposes only and is not to be construed as a legal document. Any reliance on the information contained herein is at the user's own risk. The Florida Department of Health and its agents assume no responsibility for any use of the information contained herein or any loss resulting therefrom.

Date: 10/11/2019