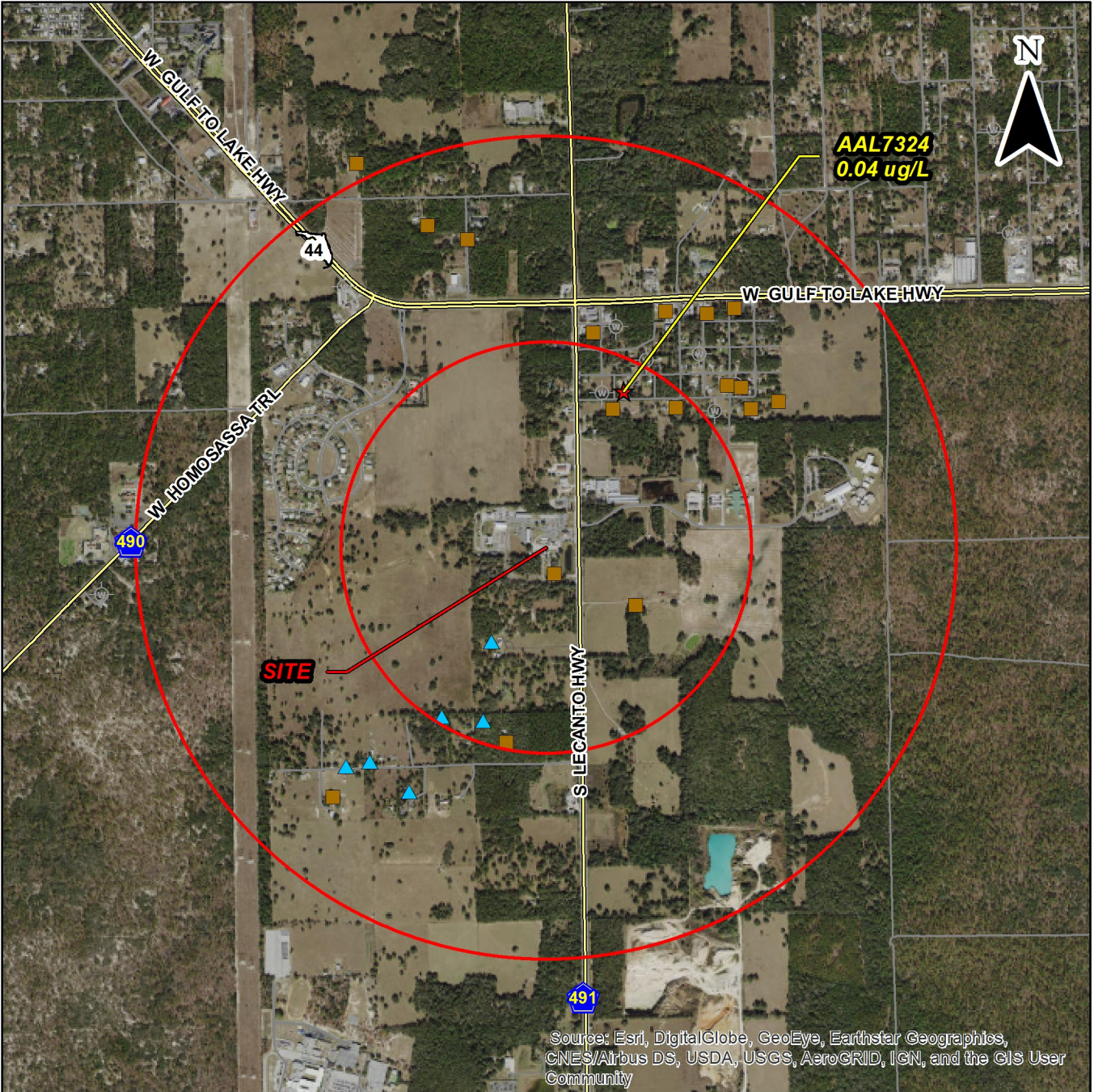


# CITRUS COUNTY FIRE TRAINING CENTER



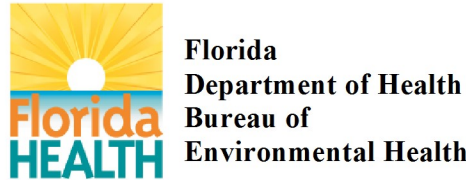
## PFAS Sample Results

- ★ >HAL
- ★ >1/2 HAL
- >1/4 HAL
- <1/4 HAL
- ▲ BDL
- ⊗ No Sample for this Analysis

Note: Unless otherwise specified, DEP's SIS will sample the City of Zephyrhills wells.

### Wells PFAS Level

0	>HAL
1	>1/2 HAL
0	>1/4 HAL
17	<1/4 HAL
7	Below Detection



Source: Esri, DigitalGlobe, GeoEye, Earthstar Geographics, CNES/Airbus DS, USDA, USGS, AeroGRID, IGN, and the GIS User Community

Disclaimer  
This product is for reference purposes only and is not to be construed as a legal document. Any reliance on the information contained herein is at the user's own risk. The Florida Department of Health and its agents assume no responsibility for any use of the information contained herein or any loss resulting therefrom.