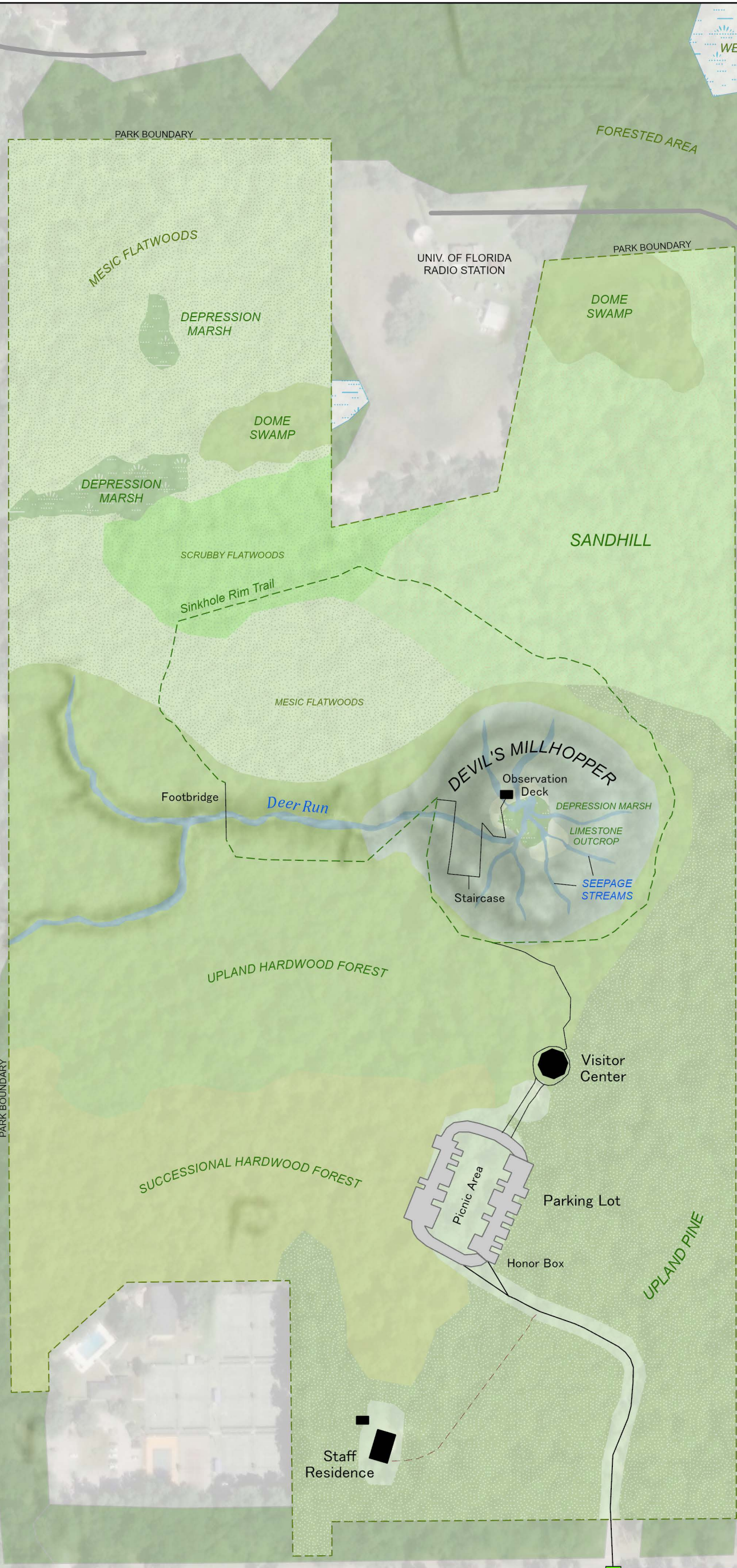


- PARK FEATURES**
-  Park Boundary
 -  Structures
 -  Paved Park Roads
 -  Unpaved Park Road
 -  Parking Lot
 -  Walkways
 -  Hiking Trails



NW 52nd TERR

PRIVATE DRIVE

TO SAN FELASCO HAMMOCK PRESERVE STATE PARK

NW 53rd AVE

(MILLHOPPER ROAD)

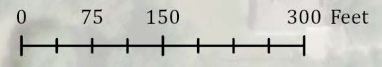
TO GAINESVILLE

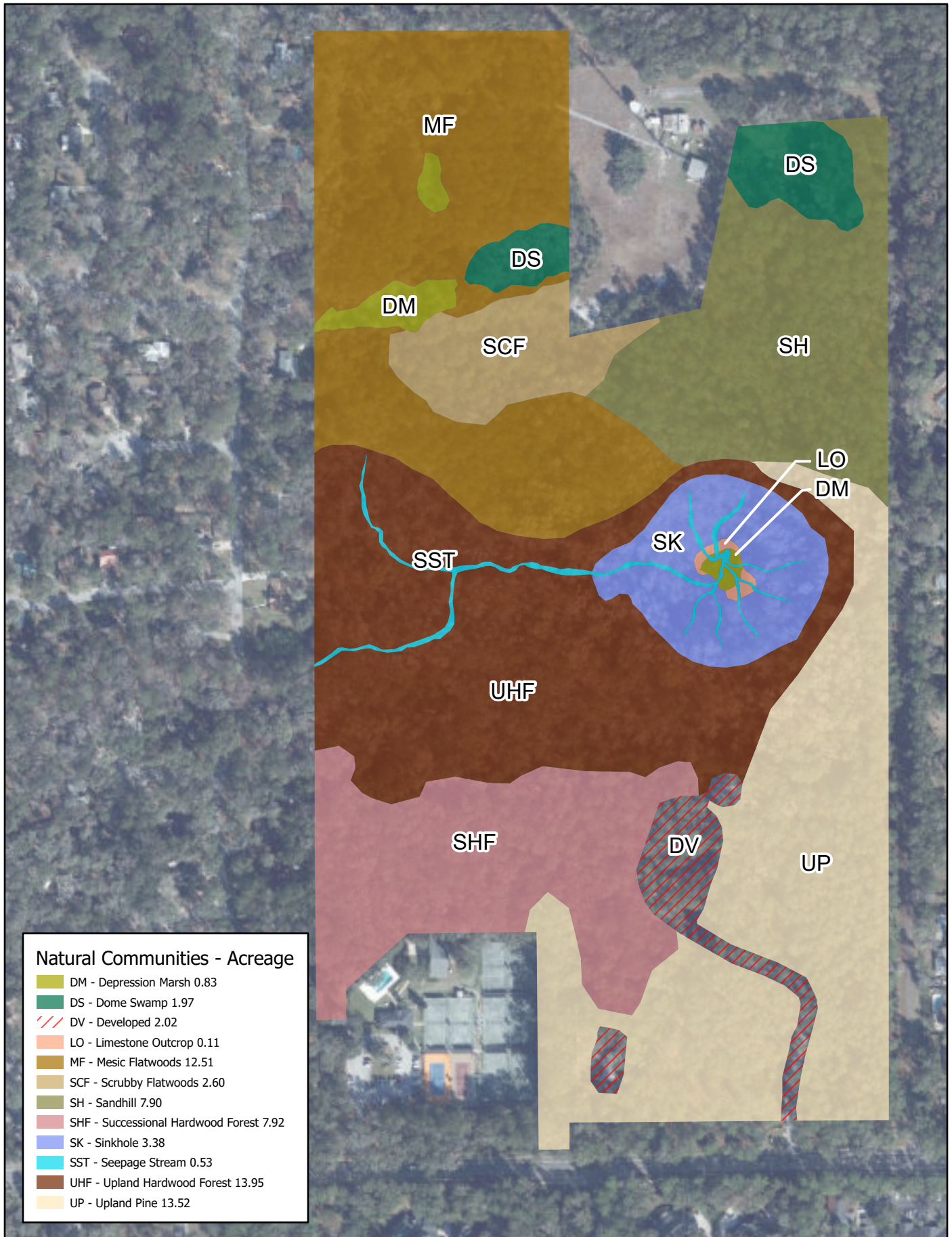
PARK ENTRANCE



DEVIL'S MILLHOPPER GEOLOGICAL STATE PARK

ALACHUA COUNTY, FLORIDA

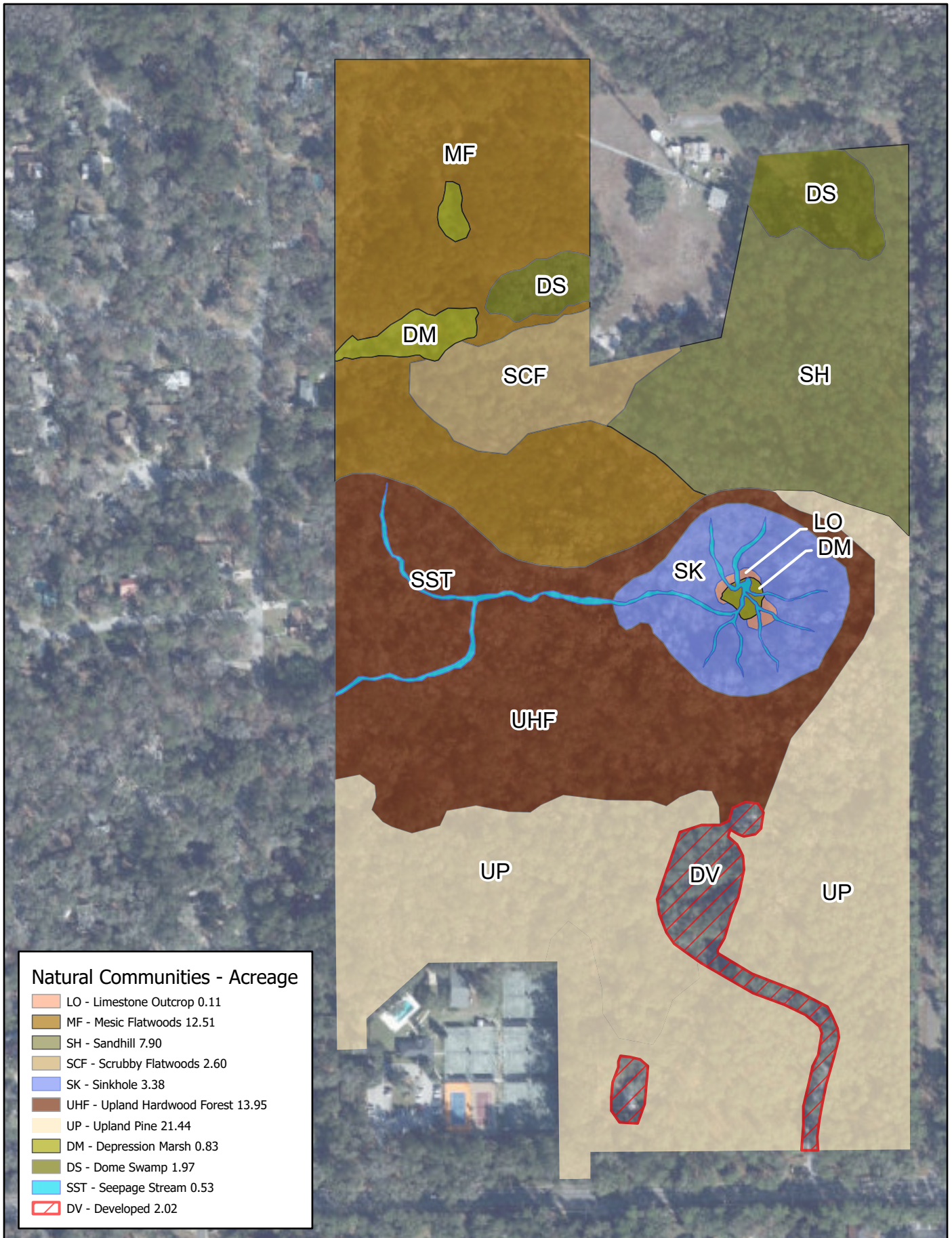




DEVIL'S MILLHOPPER GEOLOGICAL STATE PARK
Natural Communities - Existing Conditions



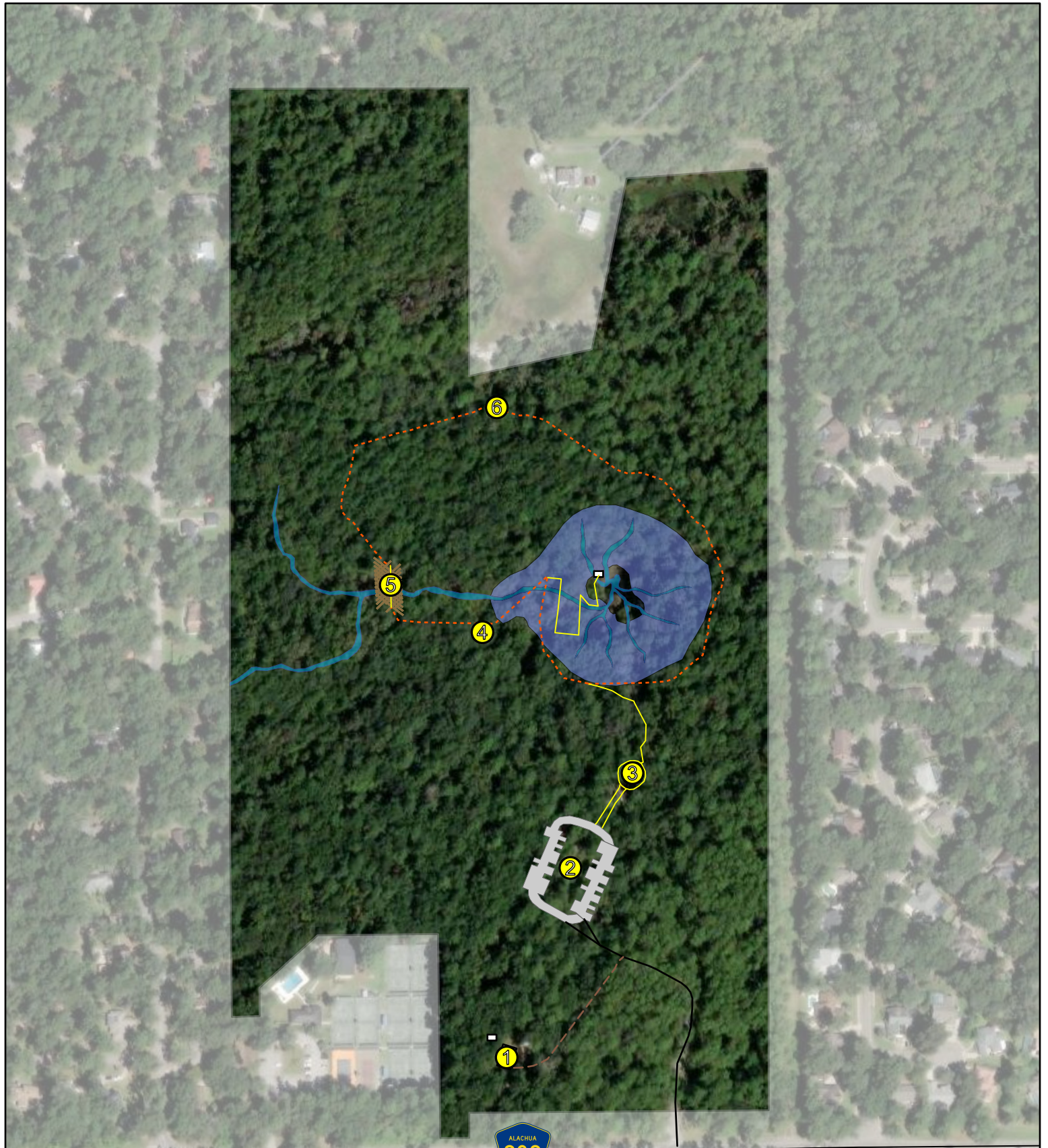
This graphical representation is provided for informational purposes and should not be considered authoritative for navigational, engineering, legal, and other uses.



DEVIL'S MILLHOPPER GEOLOGICAL STATE PARK
Natural Communities - Desired Future Conditions



This graphical representation is provided for informational purposes and should not be considered authoritative for navigational, engineering, legal, and other uses.



- Proposals
- Structures
- Parking Lot
- Millhopper Sink
- Deer Run Creek
- Bridges
- Hiking Trail
- Walkways
- Paved Park Roads
- Unpaved Park Roads

- 1** Support Area - Provide sewer connections.
- 2** Parking Area - Reconfigure and repave parking lot. Remove picnic infrastructure from parking area.
- 3** Visitor Center - Update interpretive panels. Increase restroom capacity and provide sewer connections. Redesign roof or consider structure replacement.
- 4** Picnic Area - Relocate picnic infrastructure here.
- 5** Sinkhole Rim Trail - Install informative signage and revegetate unauthorized entry points. Improve viewshed from adjacent tower. Consider conducting a hydrological study. Consider partnering with the Deer Run neighborhood to reduce stormwater runoff.
- 6** Deer Run Creek's Footbridge - Replace the footbridge.



Devil's Millhopper Geological State Park

Conceptual Land Use Plan

