

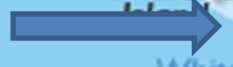
EVERGLADES CITY

Florida Trail Town Proposal





Everglades City



Where is
Everglades City ?



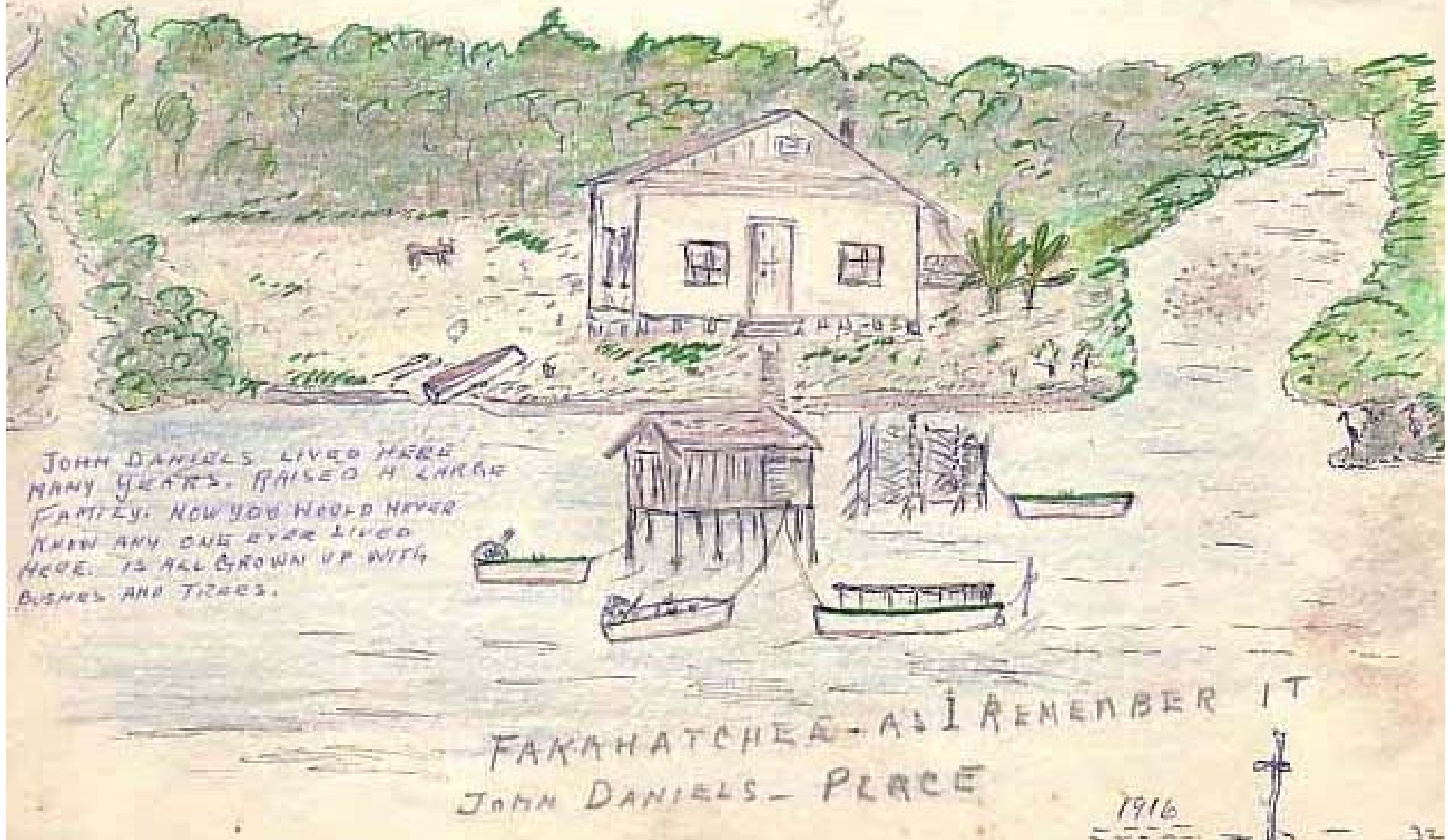
Everglades





The site of Everglades City was inhabited by Native Americans thousands of years ago.

Early pioneer Rob Storter documented life on the water in the late 1800s and early 1900s in his book "Cracker in the Glades".



EVERGLADES CITY STATISTICS

- **Local population: 426 year round Median Age: 51**
1,500 seasonal (estimate)
- **Size: 1.18 square miles**
- **Number of Hotels: 6 Restaurants: 7**
- **Central hub for 7 national / state parks with miles of trails on land and water:**

	<u>Acres</u>	<u>Annual Visitors</u>
• Big Cypress	720,566	1,200,000
• Everglades Nat'l Park	1,542,526	1,000,000
• Fakahatchee Strand	77,701	128,000
• Collier-Seminole	7,271	
• Picayune Strand	73,715	
• 10,000 Islands Nat'l Wildlife	35,000	
• FL Panther Nat'l Wildlife	26,400	












National Park Service
U.S. Department of the Interior



Everglades National Park

Gulf Coast

Segment 13 of the CT Rookery Bay to Everglades City

-  Drinking Water
-  Camping
-  Kayak Launch
-  Shower Facility
-  Restroom
-  Restaurant
-  Grocery Store
-  Point of Interest
-  Hotel / Motel

Florida Circumnavigational
Saltwater Paddling Trail
Segment 13

Rookery Bay / Ten Thousand Islands

**Everglades
City**



Segment 14: Everglades / Florida Bay

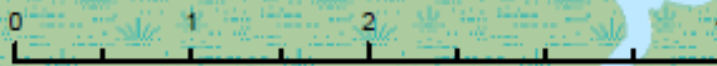
Everglades City



**Segment 14
of the
Florida CT
Everglades City
to
Florida Bay**

Rabbit Key Campsite B

A	N: 25.8455 W: -81.3873				
B	N: 25.7517 W: -81.3740				



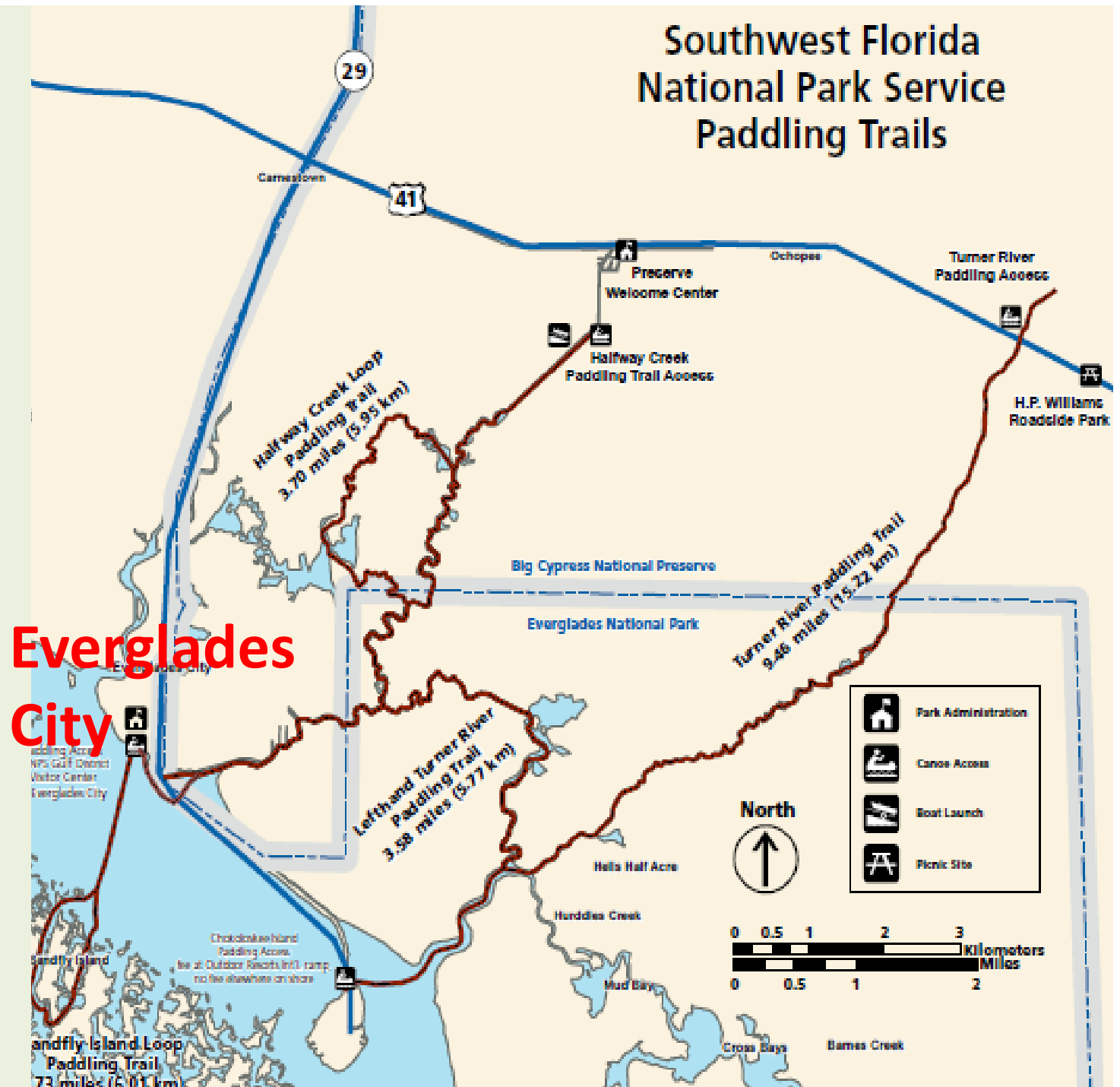
Kayak/Canoe
Ramp to the
Wilderness
Waterway Trail
99 miles to
Flamingo

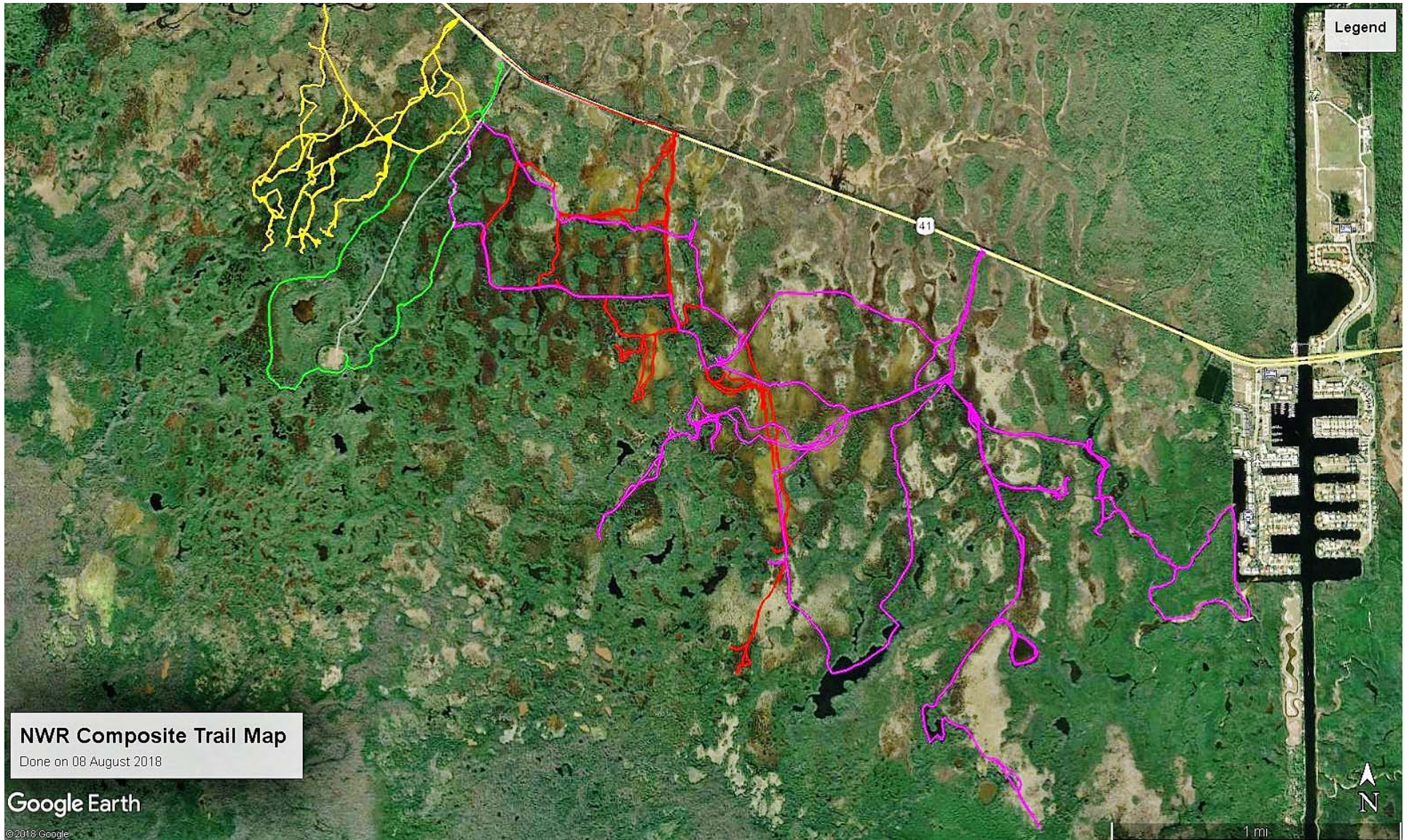




Short Paddling Trails from Everglades City

- Halfway Creek Loop (3.7 miles)
- Lefthand Turner (3.58 mi)
- Sandfly Island (5 mi loop)





Paddling Trails in the National Wildlife Refuge



Fakahatchee Strand Preserve East River Paddle Trail

The East River Paddle Trail launch is tucked away on an unmarked dirt drive off US Hwy 41, five miles west of State Road 29, on the south side of the road.

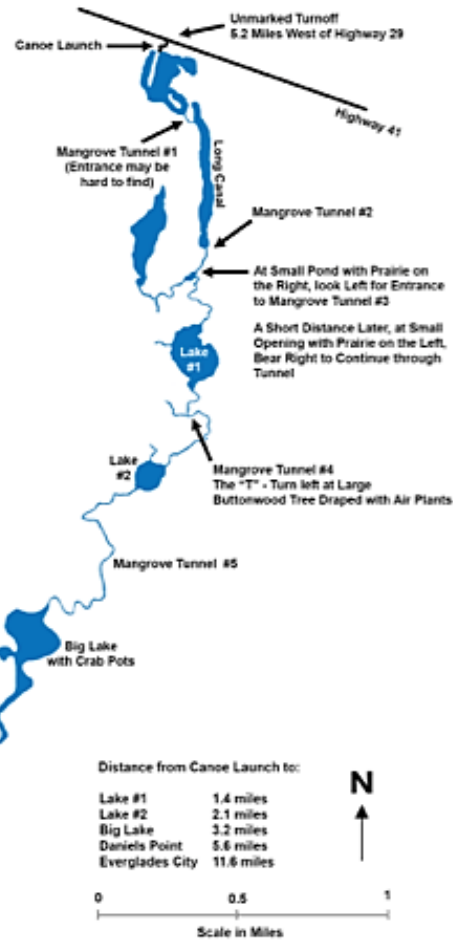
The River is primarily brackish water and a tidal responsive creek that flows southwest to the Fakahatchee Bay and the 10,000 Islands. It is a beautiful and varied creek, passing through a succession of small lakes and canopied mangrove tunnels before widening into a tidal river. The mangrove tunnels are particularly beautiful, becoming larger and more majestic with each passing mile. Alligators may be seen in the river's upper section, as well as a variety of birds.

The route is not marked, although paddlers may encounter flagging tape, spray paint and other unofficial aids. Do not rely on these markers, as they can be found on and off the route.

Required Daily Entrance Fees:

\$3.00 Per Motorized Vehicle

\$2.00 Per Person and Each additional Passenger over 8



Please remember: **LEAVE NO TRACE** of your visit.

Padding time to Big Lake and back from the Canoe Launch is 4 - 6 hours.



Fakahatchee Strand East River Paddling Trail 11.6 miles to Everglades City

Collier County Paradise Blueway Everglades City to Goodland

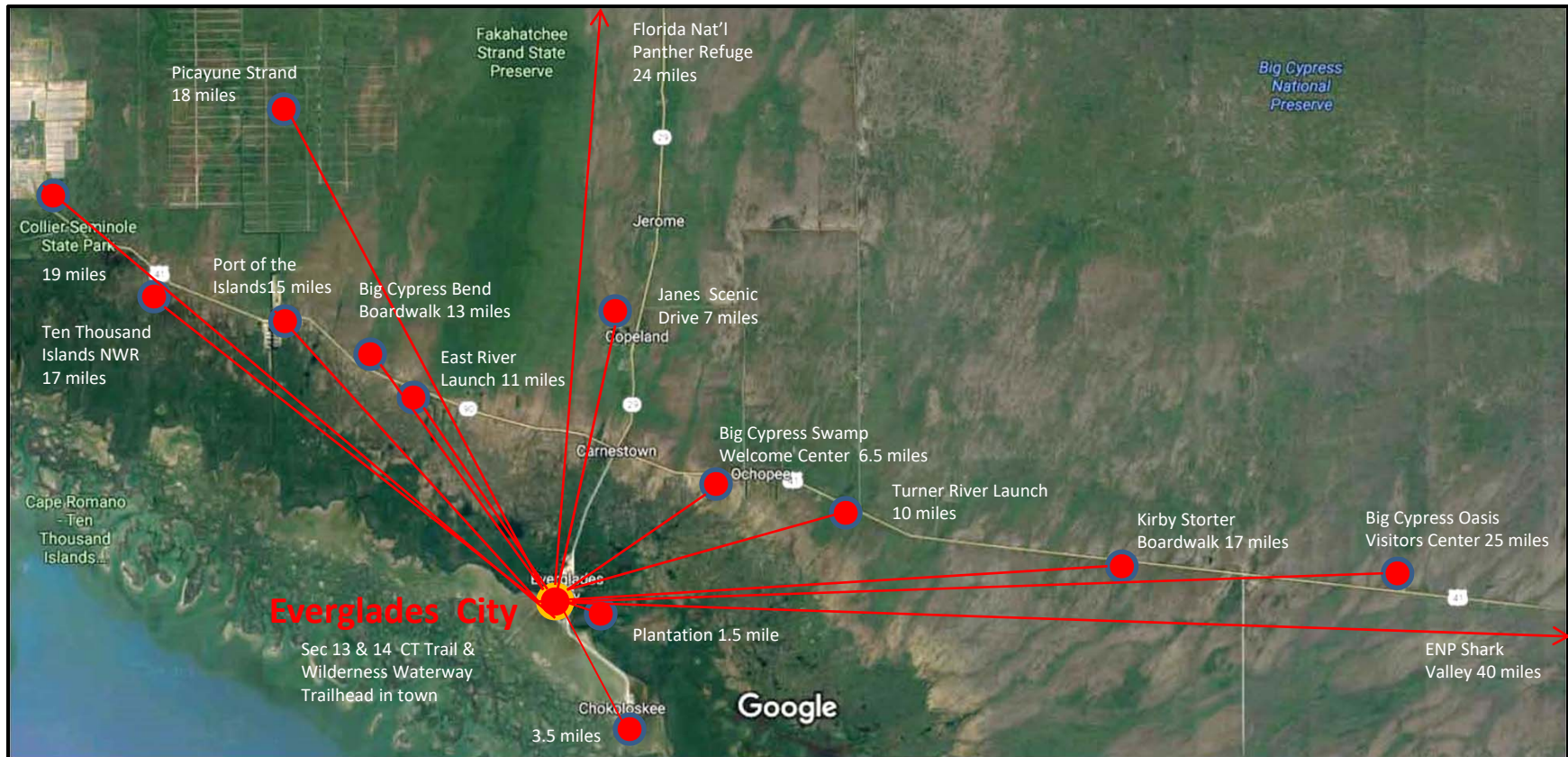
Everglades
City



- Legend**
- Everglades City to Goodland
 - Goodland-Coon Key Loop
 - Collier-Seminole State Park-Blackwater River
 - Port of the Islands to Panther Key
 - Everglades City to Sandfly Island
 - Chokoloskee to Rabbit Key
 - Turner River
 - Road



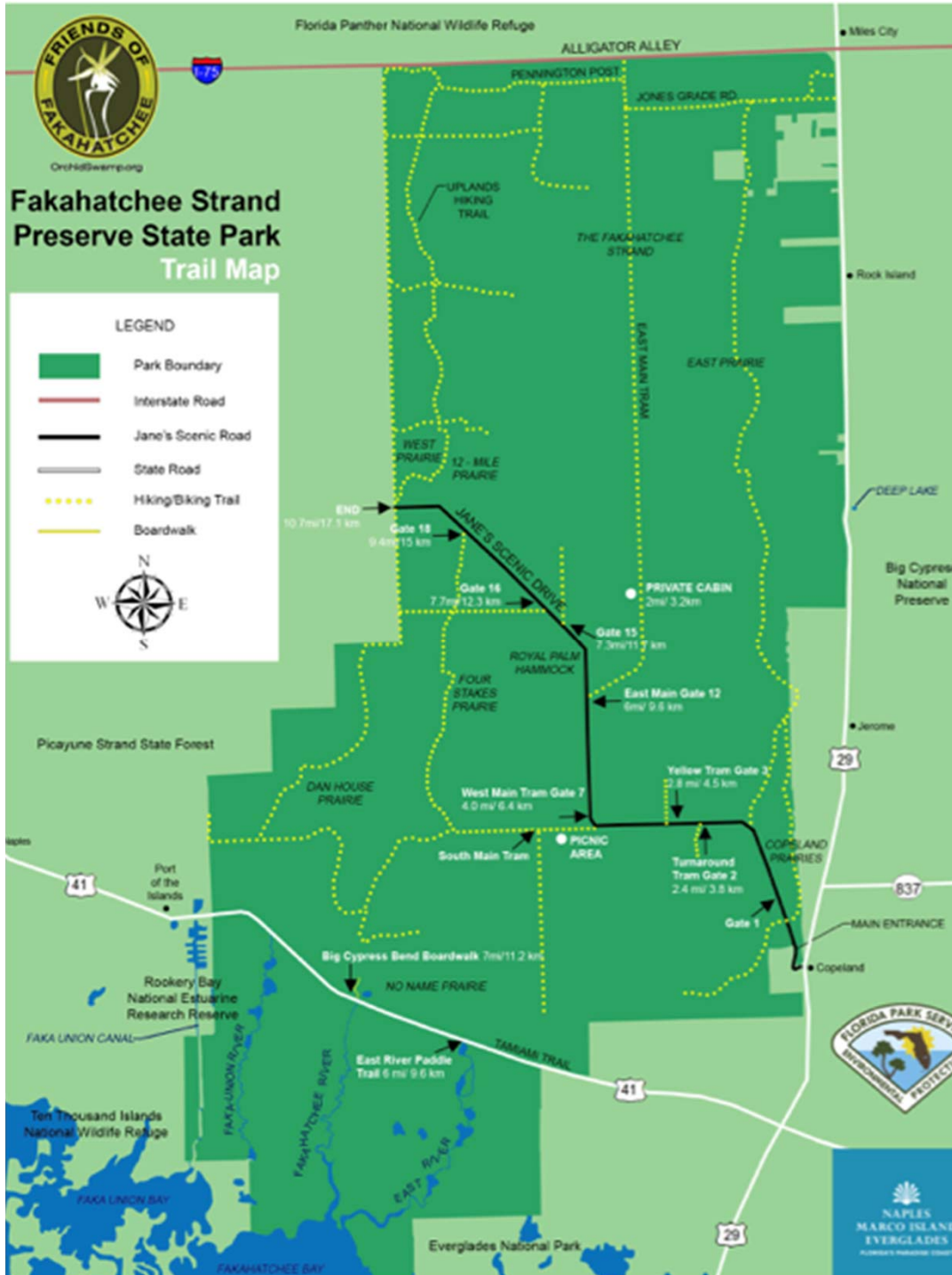
0 0.5 1 2 3 4 Miles



EVERGLADES CITY IS THE HUB
Other destinations are the SPOKES

Historic Buildings in Downtown Everglades City



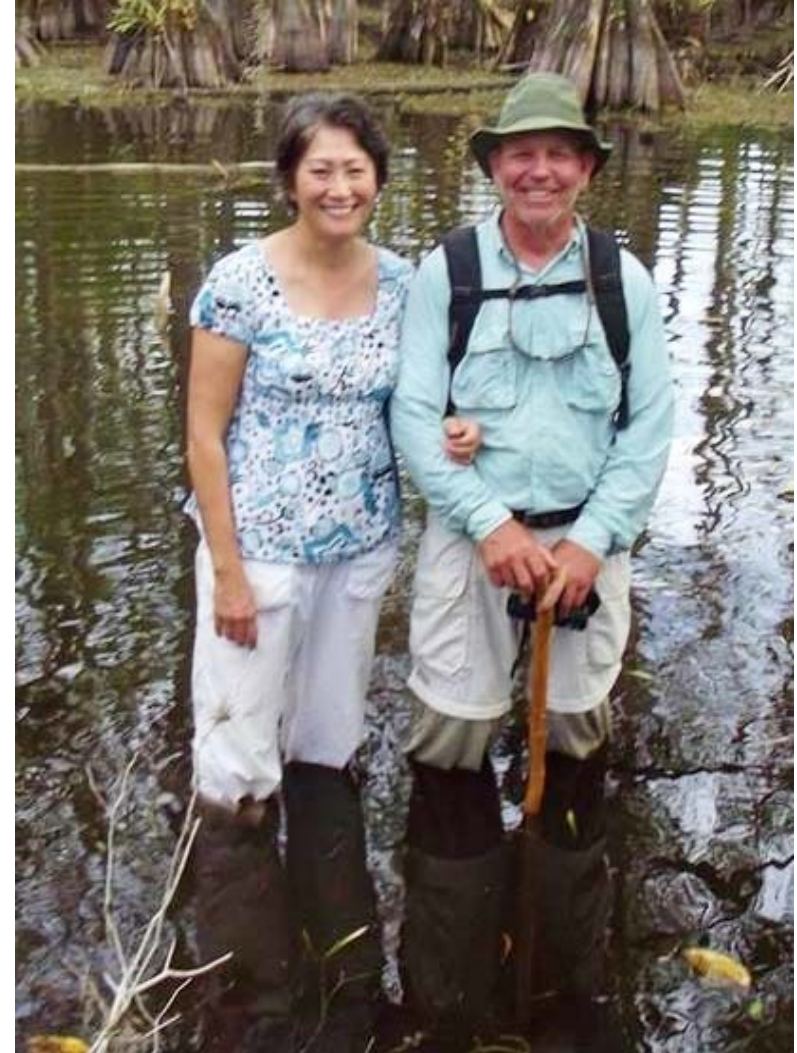


HIKING / BIKING TRAILS

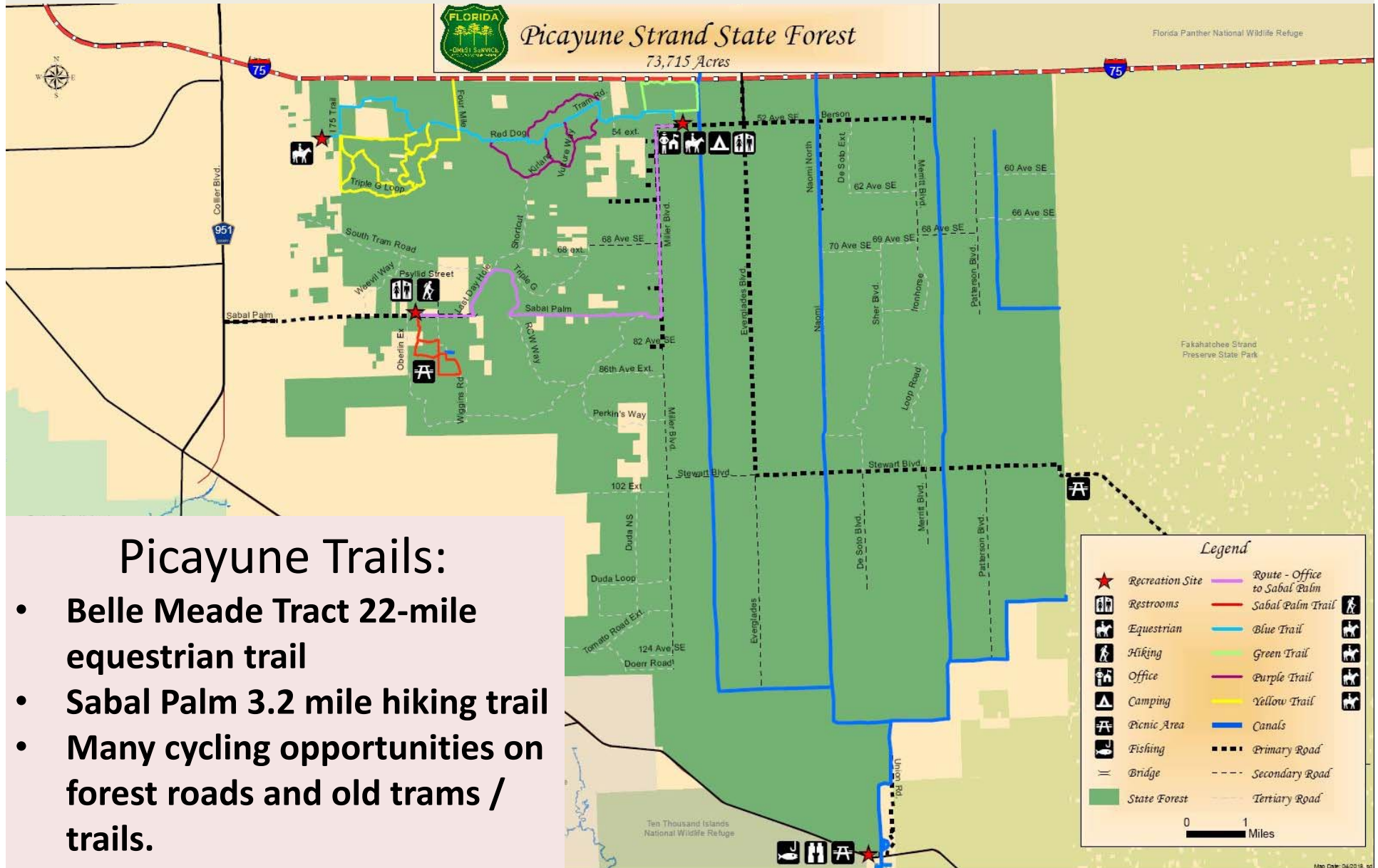
Fakahatchee Strand

- Big Cypress Bend Boardwalk (1.2 miles)
- Janes Scenic Drive (11 mi)
- West Main Gate 7 (3 mi)
- East Main Gate 12 (2.6 mi)

Hiking Opportunities



Picayune Strand State Forest



Collier Seminole Hiking Trails

**Collier-Seminole Hiking Trail
Collier-Seminole State Park**

25.9897, -81.5786

Trail route ©FloridaHikes.com,
Florida DEP
Map background
©Thunderforest, Caltopo,
OpenStreetMap contributors,
USGS / USDA



**Hiking Trail
6.5 mile Loop**

**Biking/Hiking Trail
3.4 miles**



Ten Thousand Islands Marsh Trail

2.4 mile loop





Florida Panther National Wildlife Refuge Hiking Trails:

- Panther Trail 1.3 mi
- Memorial Trail .3 mi

Everglades and Big Cypress

National Park Service
U.S. Department of the Interior

Everglades and Big Cypress



EVERGLADES NATIONAL PARK AND BIG CYPRESS NATIONAL PRESERVE

T A M I A M I T R A I L T R I A T H L O N



TOUR THE GLADES
Private Wildlife Tours

104
BUCKNER AVE S

LOCAL MAPS & INFORMATION

HIKING TRAILS

Local Maps & Information at Kayak Tour Shop
Everglades City

WELCOME



Gator Bike Rack at Museum of the Everglades

Biking Opportunities



Everglades McLeod Community Park



Bike Rentals at Airpark





Welcome to Historic
CHOKOLOSKEE

EVERGLADES SOCIETY FOR HISTORIC PRESERVATION, 2016

CHARTERS

MUSEUM

ECO TOURS

RESTAURANTS

MARINAS

MOTELS / RV PARKS

Chokoloskee
Historic Site
Store &
Museum
and Boat
Launch





GUIDED ECO TOURS
PHOTO TOURS

BIRDING

NATURE TOURS

KAYAK SHOP



Everglades
Area Tours
Guided ECO Adven

205 095 0





**Bike Rack at Chokoloskee
Post Office / Havana Café**

New Bridge between
Chokoloskee
& Everglades City with
Separated Bicycle/
Pedestrian Pathway



Everglades City Services

**Collier County Sheriff's Office
in City Hall**

**EMS and Fire Station
behind City Hall**



LODGING



Five out of Seven Restaurants are on the Water with Docks



**TRIAD
SEAFOOD
Cafe & Market
WATERFRONT
DINING
OPEN 7 DAYS
239-695-2662
STONE
CRABS**

ACTION PLAN TIMETABLE

Recently completed:

- Beautification of community park by the Lions Club – Phase I
- Establishment of a City Bike/Ped Committee
- Bike Rental Shop opened
- Website development to expand on paddling opportunities
- Meetings with Greater Naples Chamber of Commerce and Executive Director of the Collier County Tourist Development Council to coordinate marketing plans
- Business Rack Card Holder for Visitor Information in City Hall (Trail Town Committee project)



Everglades City Newspaper and Website



www.swflgo.com



The MULLET RAPPER

What's Happening in the Everglades & 10,000 Islands

NOVEMBER 17, 2018 - NOVEMBER 30, 2018

TIDE TABLE &
RESTAURANTS
PAGE 11



Happy Thanksgiving, Everyone!



© 2018, K Bee Marketing

P O Box 134, Everglades City, FL, 34139

Volume X • Issue # 325

City Council Approves 5 Year Moratorium on New Airboat Licenses Move Protects Existing Businesses, Caps Number of Boats Leaving City Limits
The Everglades City Council passed an ordinance restricting the number of airboat business licenses to 6, with each having a maximum of 200 seats, for a 5 year term. The ordinance was passed after a public hearing held by attending Council members, Tim Smith and Parker Oglesby. Council member Tim Smith was not in attendance, but enough to form a quorum.

The ordinance is a way to protect the dangers of too many airboats. Florida boat accidents, and the ordinance will help stem the tide of accidents which increases the chances of accidents.

Residents living with residents who live on or near the water are not affected. The ordinance is a hot topic of discussion. The City held a public hearing before drafting the ordinance and approved it.

Mayor Roberto explained the ordinance to amend the city code to make any changes. Without any other changes, the ordinance remains in effect.



Veterans Honored With Memorial Plaque at Everglades City Hall On Veterans Day



A memorial plaque, donated by the Everglades Society for Historic Preservation honoring those who have served our country, was unveiled on Veterans Day Sunday, November 11th in front of Everglades City Hall.

Pastor Bob Wallace seen below in his Navy Whites, led the small gathering in prayer and the singing of "God Bless America."



The Everglades Society for Historic Preservation (ESHPP, Inc.) is a 501(c)(3) not-for-profit corporation whose focus is to raise awareness of our unique history and of the wealth of historic buildings in our area. ESHPP's mission is to preserve historic sites, structures, documents, artifacts and memories within the Everglades area.

The Society was founded at the end of 2004. The areas of interest include Everglades City, Plantation Island, Chokoloskee, Ochopee, Copeland & Lee Cypress, and Jerome. Members include local residents, seasonal visitors, and admirers of our heritage from other parts of Florida or further afield. If you would like information about ESHPP, contact Marya Repko at 239-695-2905.



72-Hours to Key West Bike Ride by Patty Huff

This year marked the 9th Annual 72-Hours to Key West Bike Ride. When this bike ride was organized to benefit the Tiny Hands Foundation (www.tinyhandsfoundation.org), there were only nine bicyclists who participated.

On the morning of November 2, a group of 67 cyclists left Ft Myers Beach and traveled through the Everglades along the Tamiami Trail to spend the first night at the Miccosukee Resort.



The following day they cycled down the new multi-use pathway alongside Krome Avenue, finishing the day in Marathon before completing the tour in Key West on Sunday.

Experienced bicyclists who are used to cycling next to automobiles enjoy the long distance rides through south Florida, appreciating the beauty of the Everglades where they will see a variety of birds, wildlife, vistas and cultural / historic sites along the Tamiami Trail that can't be found anywhere else in our state.

If you are interested in learning more about cycling events in the Everglades, visit www.evergladesrogg.org/events. Brochures are available all around town highlighting Hiking/Biking/Paddling the Everglades.

Photos: Top: Riders stop at the Big Cypress Swamp welcome center. Bottom: Riders cycle along the Tamiami Trail.

RAPPER TABLE OF CONTENTS			
Events, etc.	p. 3	Local News	p. 8
History of Thanksgiving	p. 4	Charles Sobczak	p. 9
School News	p. 5	Capt. Raffield	P. 9
Free Bike Tours	p. 6	Regional News, Local Extra	p.10
My Slice	p. 7	Tide Table	p.11
Recipe & Puzzle	p. 7	Obituary	p.11
Poetry Street	p. 8	Classifieds	p.12
FEATURE: HISTORY OF THANKSGIVING, P. 4			

If you have news, photos, announcements, or articles ... email us at: mulletrapper@gmail.com or call us at: 954-662-7003.

ACTION PLAN TIMETABLE

6 months to 1 year:

- Decorative Bike Rack and Bike Repair Station at the community park (Phase II)
- Map of the city with a list of businesses to be located at the community park (Trail Town Committee project)
- New updated map at the kiosk approaching Everglades City (Everglades Society for Historic Preservation project)
- New street lights for the entire town (FEMA grant approved to replace of lights destroyed by Hurricane Irma)
- Bicycle Repair Shop
- Encourage businesses to landscape their entry areas



ACTION PLAN TIMETABLE

1 to 3 years:

- Conduct Visitor Survey – length of stay, activities participated, type of accommodations needed, how much \$ per day spent, what other options would they like to see
- New signage for the Circumnavigational Trail at the ENP Visitor Center ramp
- Chamber of Commerce re-activated
- Develop a Streetscape Master Plan to restore main boulevards with appropriate native trees
- Develop local bike / ped routes and network
- Master Plan for the City
- Coordinate w/ Parks re connections, programs & visitation



ACTION PLAN TIMETABLE

3 to 5 years

- New Businesses currently unavailable: Laundromat, barbershop, machine shop, plumbing, electrical, carpentry, dock repair, appliance repair, cleaning services
- Chokoloskee Causeway – opportunity to create a linear park and connect to Chokoloskee cultural assets
Add shade trees, sabal palms, picnic tables, benches at bridge, beach & kayak launch areas.
Consider widening the separated path
- Add Public Art to public spaces such as McLeod Park – showcase local artists & students
- Business Façade improvements



ACTION PLAN TIMETABLE

3 to 5 years (continued)

- Signage and wayfinding improvements – encourage consistent local character
- More sidewalks for connectivity between businesses and hotels/restaurants/museum in the center of town and at the north end between school and residential area
- Work with the school / businesses to develop more economic opportunities for the young people to stay in the community

5 to 10 years

- Infrastructure – Elevate roads, repair seawalls, prepare for climate change
- Coordinate with RTC for connection to Immokalee



Everglades City Marketing Material

*Historic
Everglades City
Florida*



For more information, visit *The Mullet Rapper* online or pick up a copy around town

<https://swflgo.com/>

©2019 The Mullet Rapper



*Everglades Area
EVENTS*

**Winter
2018/2019**

For more information, see
The MULLET RAPPER
www.swflgo.com/events

© 2018, Mullet Rapper
updated 12/3/18

**Everglades City
Chokoloskee**
Cycle Tour



**Friends of the
River of Grass Greenway**

FROGG, a non-profit organization, is committed to establishing the safe use by the general public of US41 across the Everglades between Naples and Miami, focusing on safety and environmental education and stewardship for those hiking, walking, and cycling through south Florida and the Everglades.

www.evergladesrogg.org

© 2017 Friends of the River of Grass Greenway (FROGG)

*Hiking/Cycling
and Paddling
the Everglades*



*Amenities along the
Tamiami Trail
U.S. 41
between
Naples and Miami*



For more information, visit website
Friends of the River of Grass Greenway
<https://www.evergladesROGG.org>

© 2018 Friends of the River of Grass Greenway (FROGG)



Everglades City
“Gateway to the Everglades”
Stay & Play & Explore