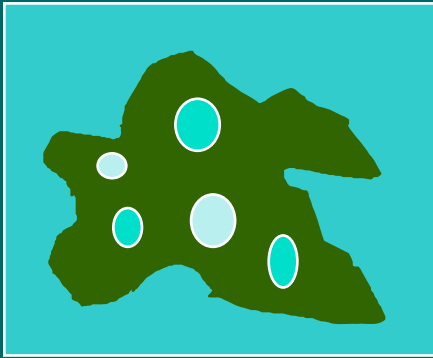


# FEGN Update Goals and Objectives

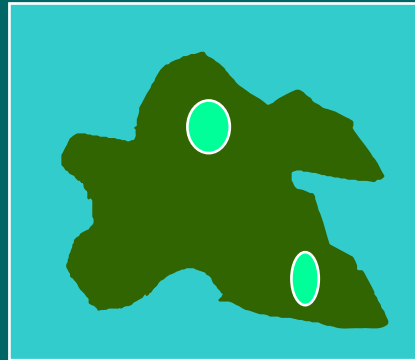
- Update the FEGN to identify a functionally connected statewide ecological network of public and private conservation lands that incorporates new and updated GIS data.
- Ensure the FEGN maximizes protection of high priority natural communities and species identified in the Florida State Wildlife Action Plan.
- Address climate change impacts to maximize the potential of Florida's native biodiversity to functionally respond to sea-level rise and other environmental changes.

# Key Analysis Steps

---



Step 1 - Identify:  
Areas of Ecological Significance



Step 2 - Select:  
Ecological Hubs

Step 3 - Delineate:  
Landscape Linkages



# PEA Data Layers

Landscape Species Habitat (Crested caracara, Florida sandhill crane, Short-tailed hawk, Swallow-tailed kite, Sherman's fox squirrel, Big Cypress fox squirrel)

USFWS Florida panther conservation zones

University of Tennessee USFWS panther habitat

Florida black bear habitat quality model

Florida black bear Population Priority Conservation Areas

FNAI Rare Matrix-Landscape Natural Communities (sandhill, flatwoods, dry prairie, upland hardwood forest, upland pine)

Integrated Habitat Network

Existing conservation lands

FWC Strategic Habitat  
Conservation Areas (SHCA)

FNAI Rare Species Habitat

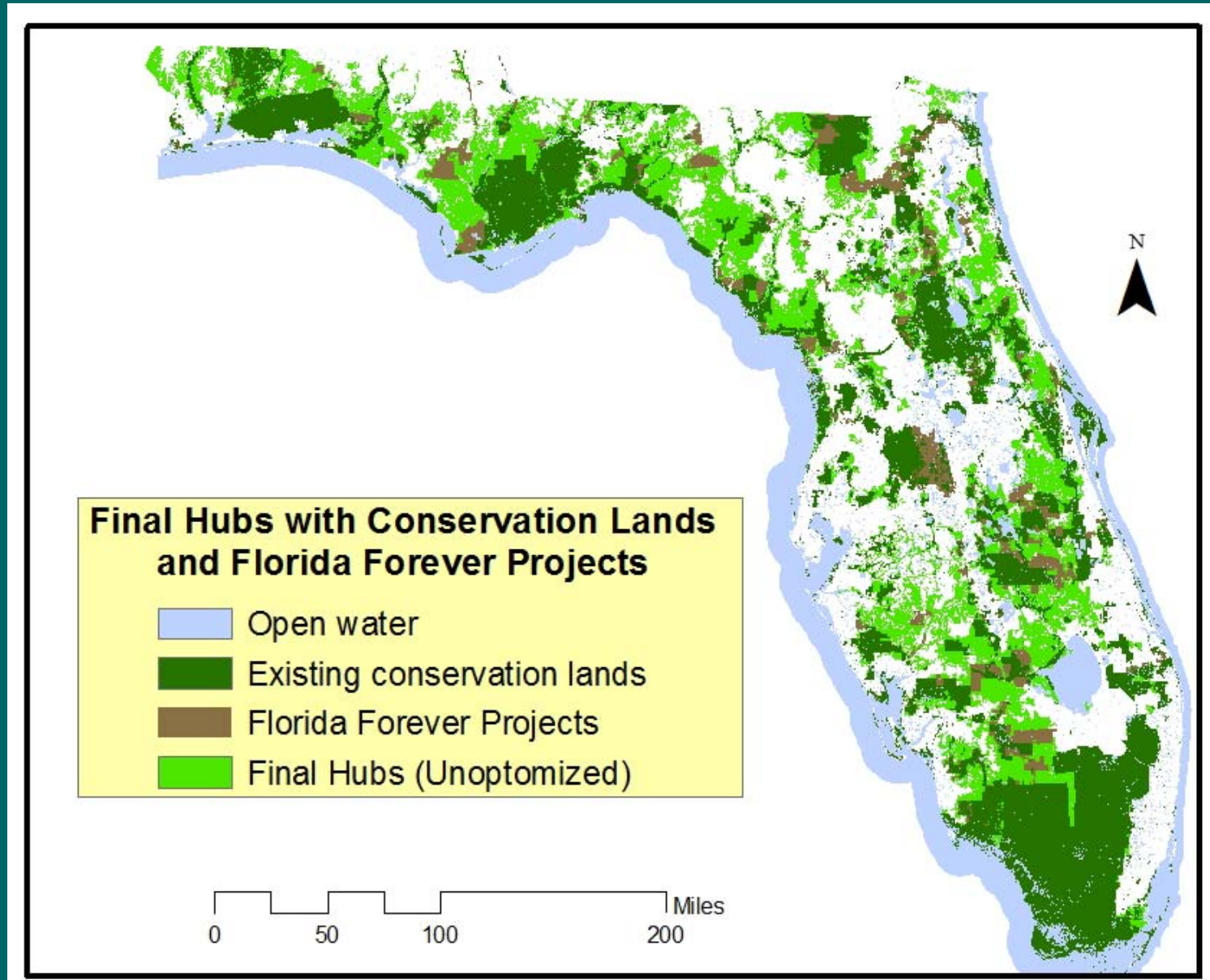
FNAI Rare Natural Communities

FNAI Functional Wetlands

FNAI Potential Natural Areas

Coastal Barrier Resources Act Lands

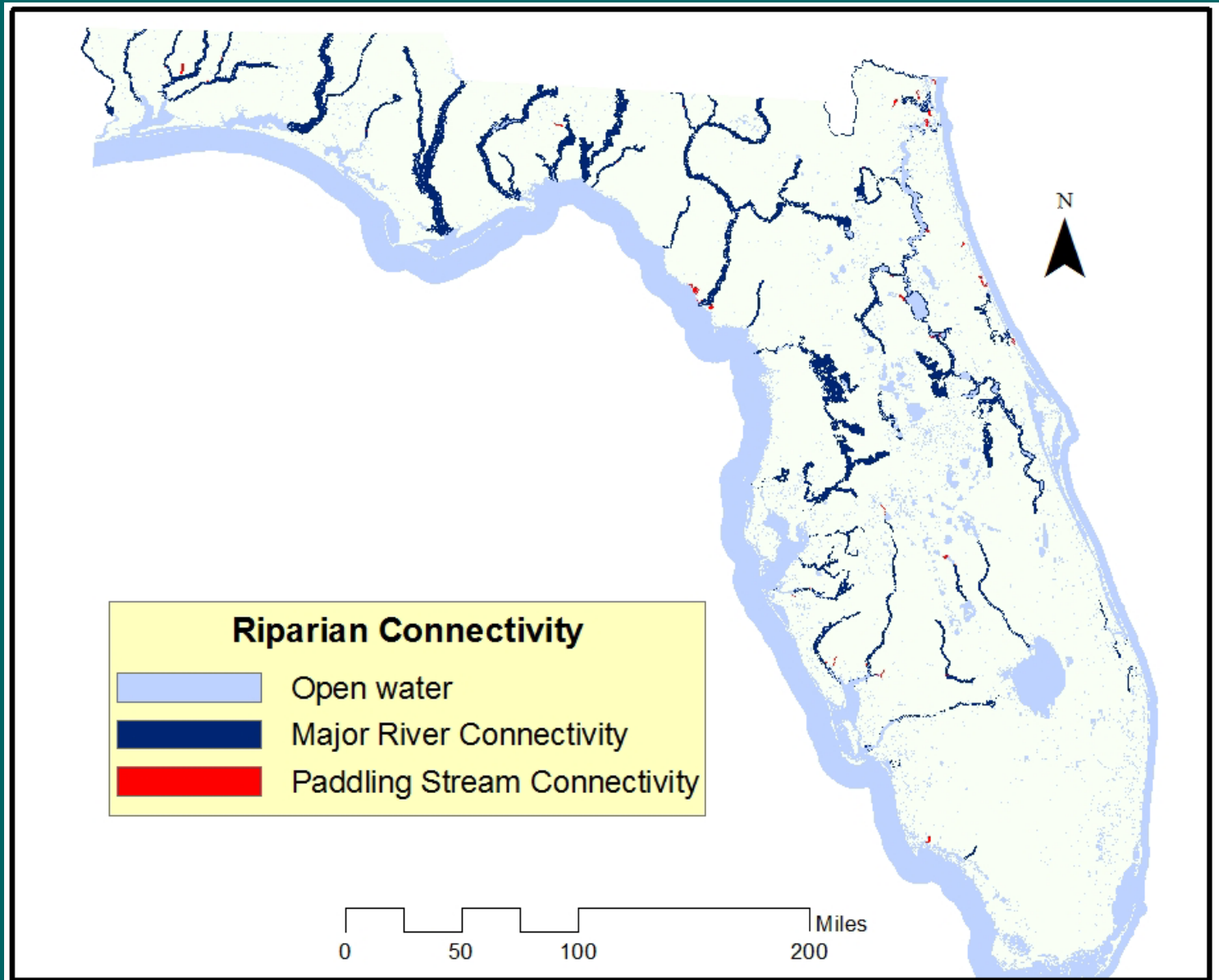
# FEGN Update Hubs



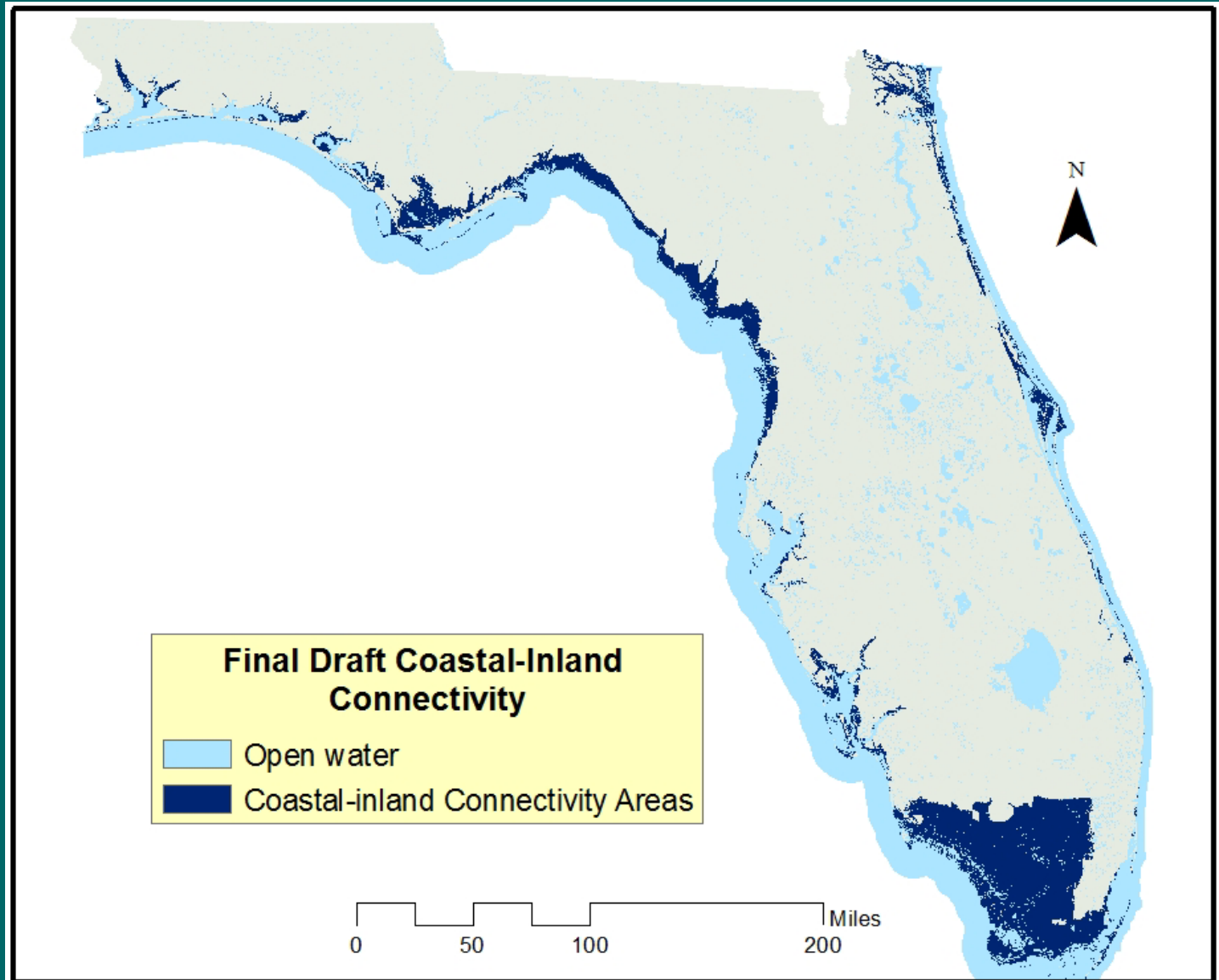
# Connectivity Analyses

- Major river/riparian connectivity/buffer analysis
- Coastal to inland connectivity analysis
- Xeric habitat connectivity analysis
- Florida panther and Florida black bear habitat and connectivity analyses
- General landscape connectivity analysis

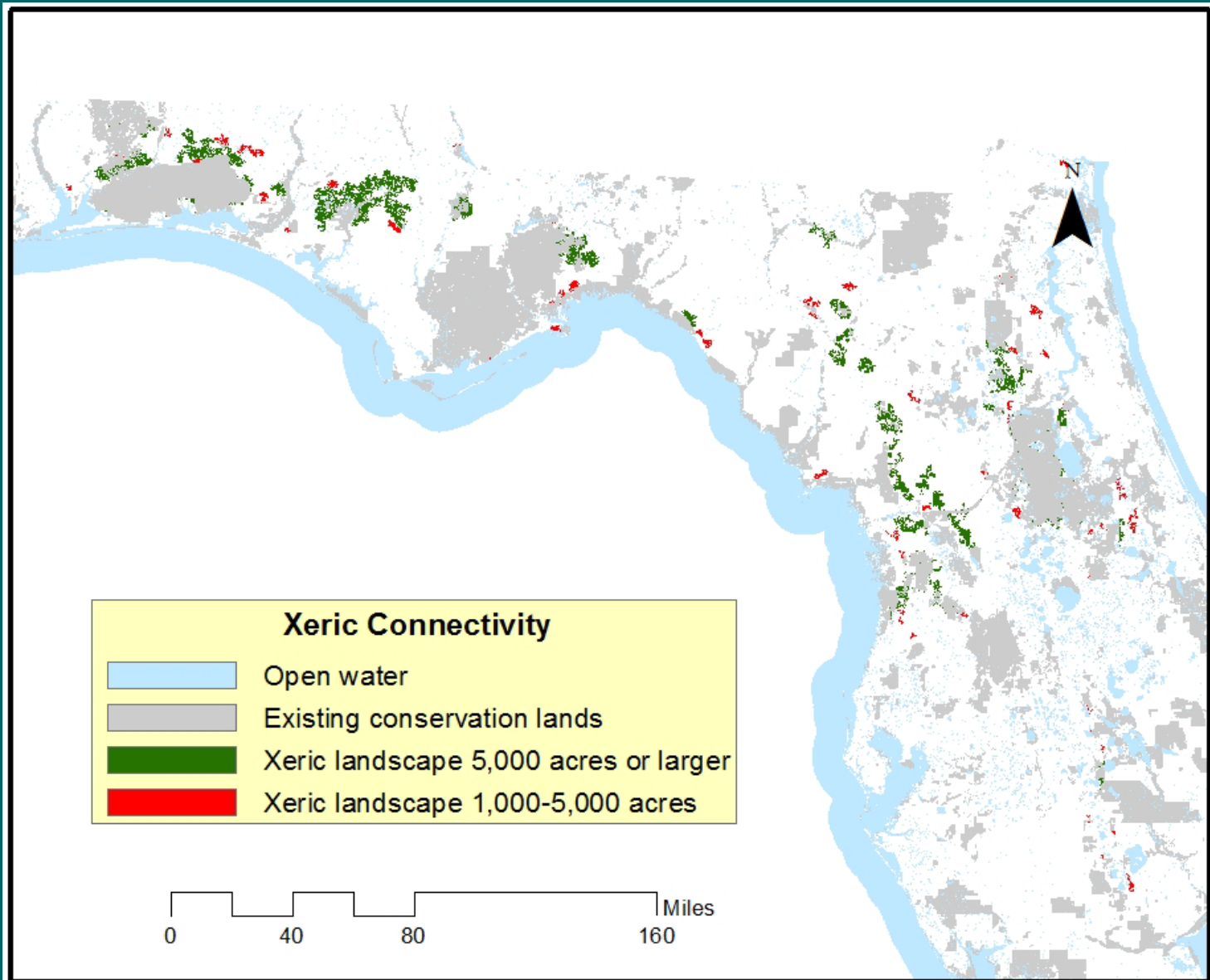
# Riparian Connectivity



# Coastal-Inland Connectivity

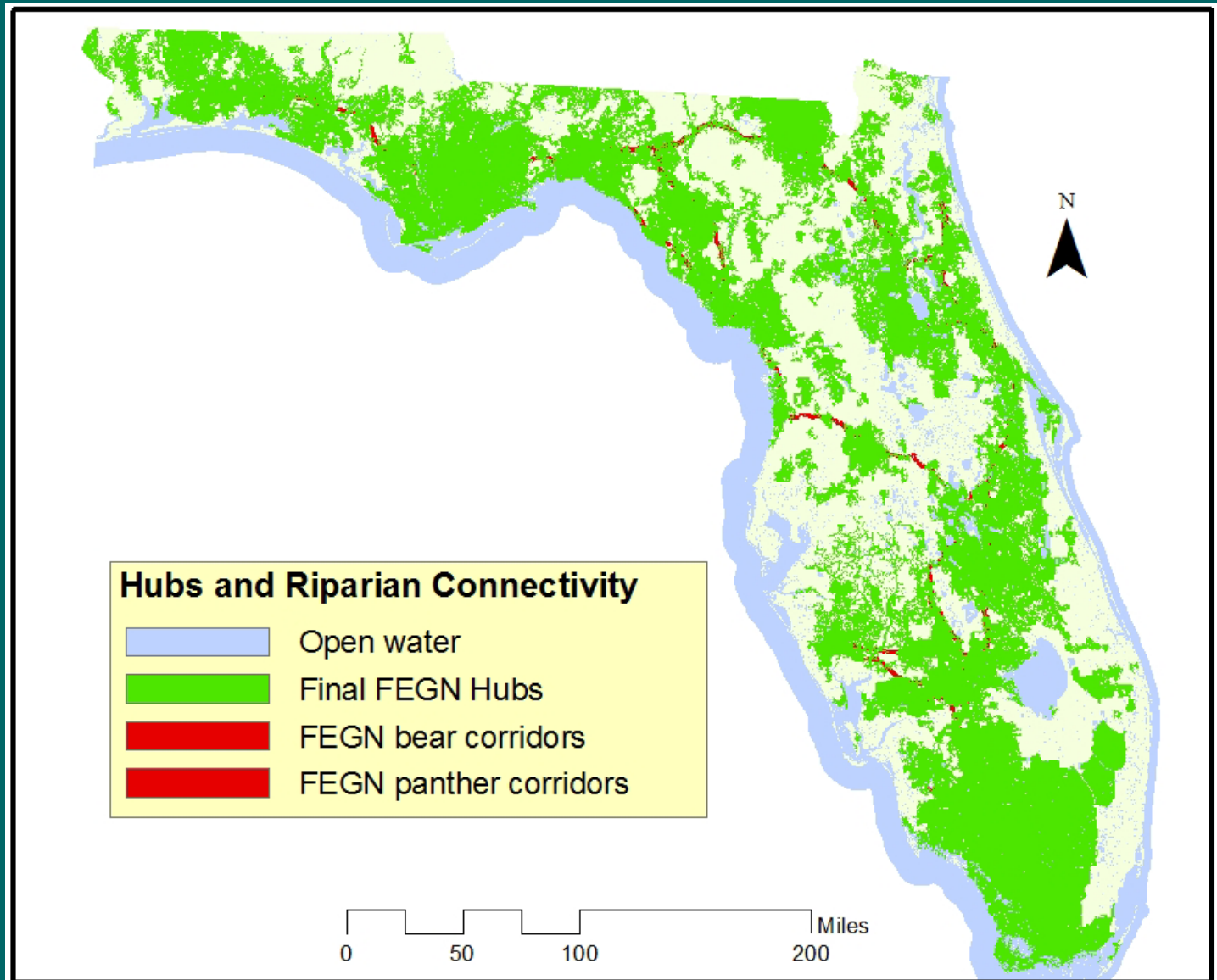


# Xeric Habitat Connectivity

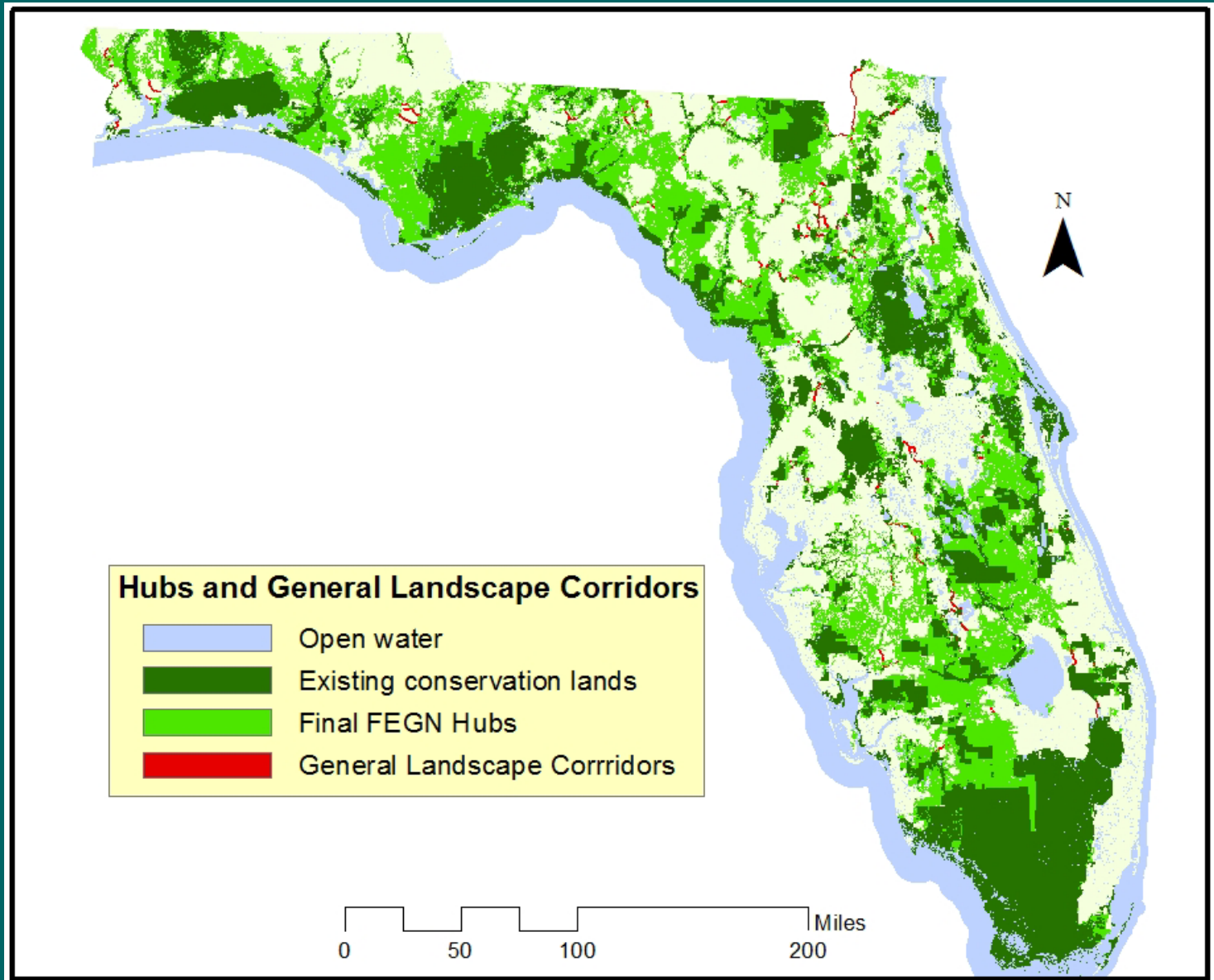




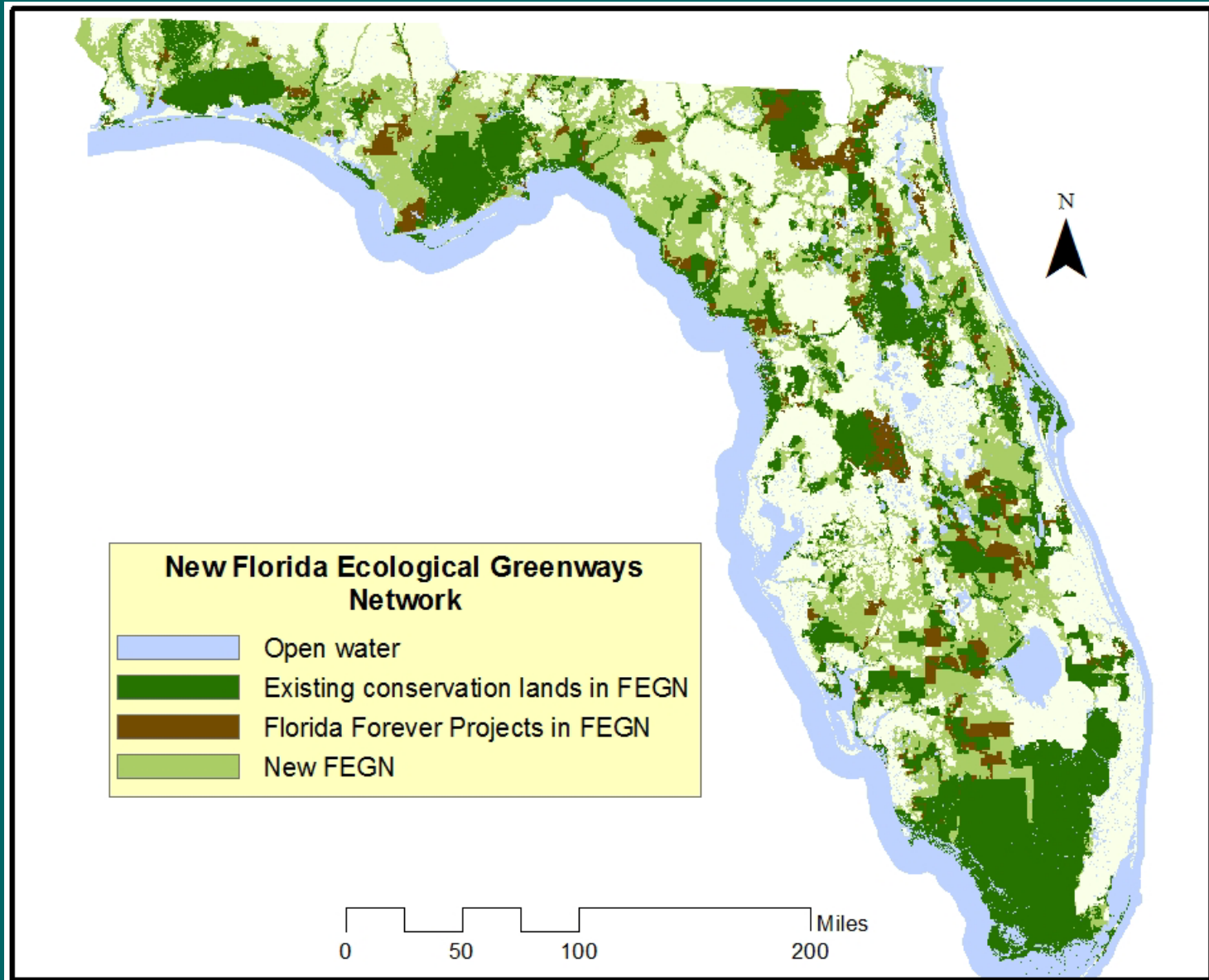
# Bear/Panther Corridors and Hubs



# General Landscape Connectivity



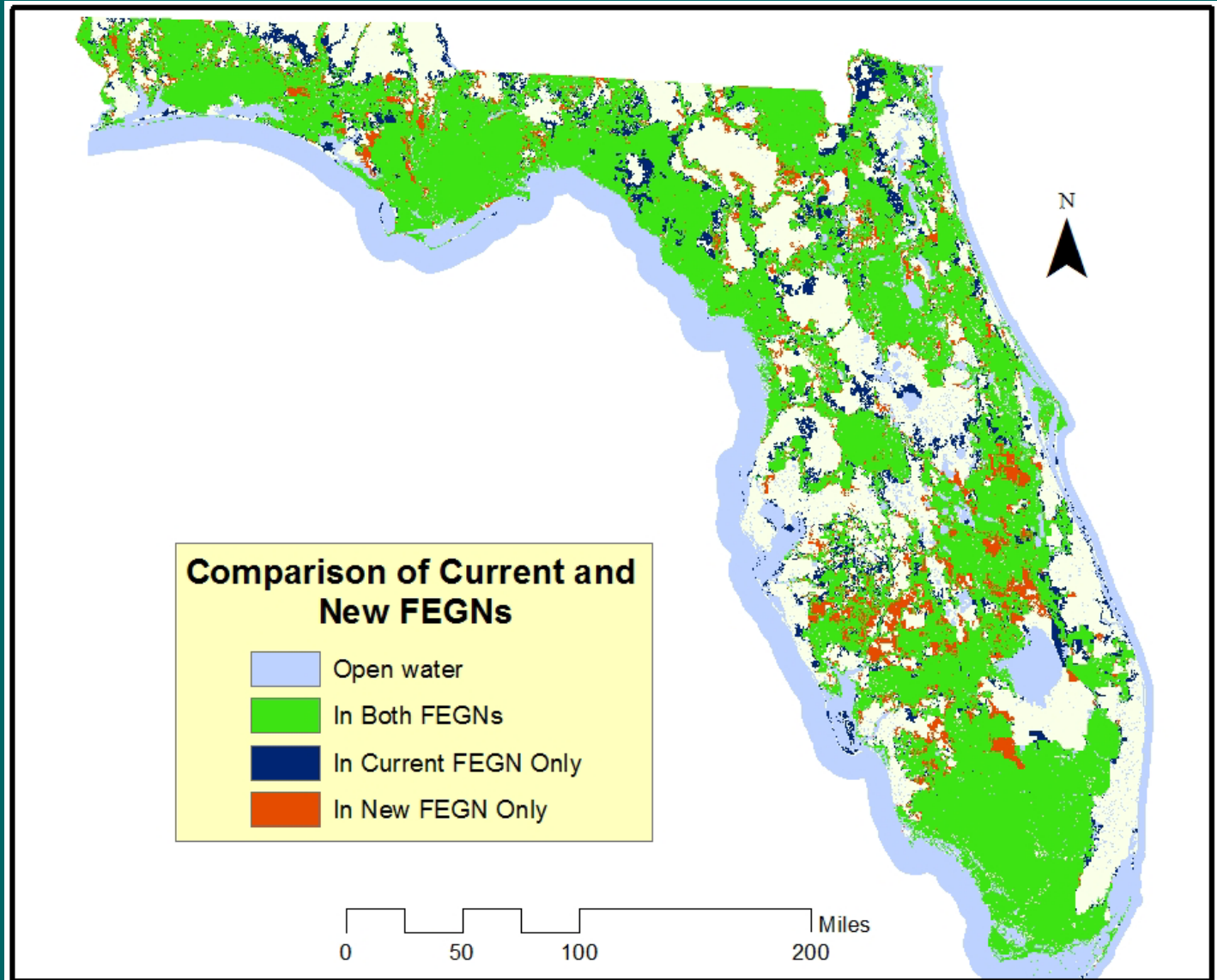
# Updated FEGN



# FEGN Land/Water Category Stats

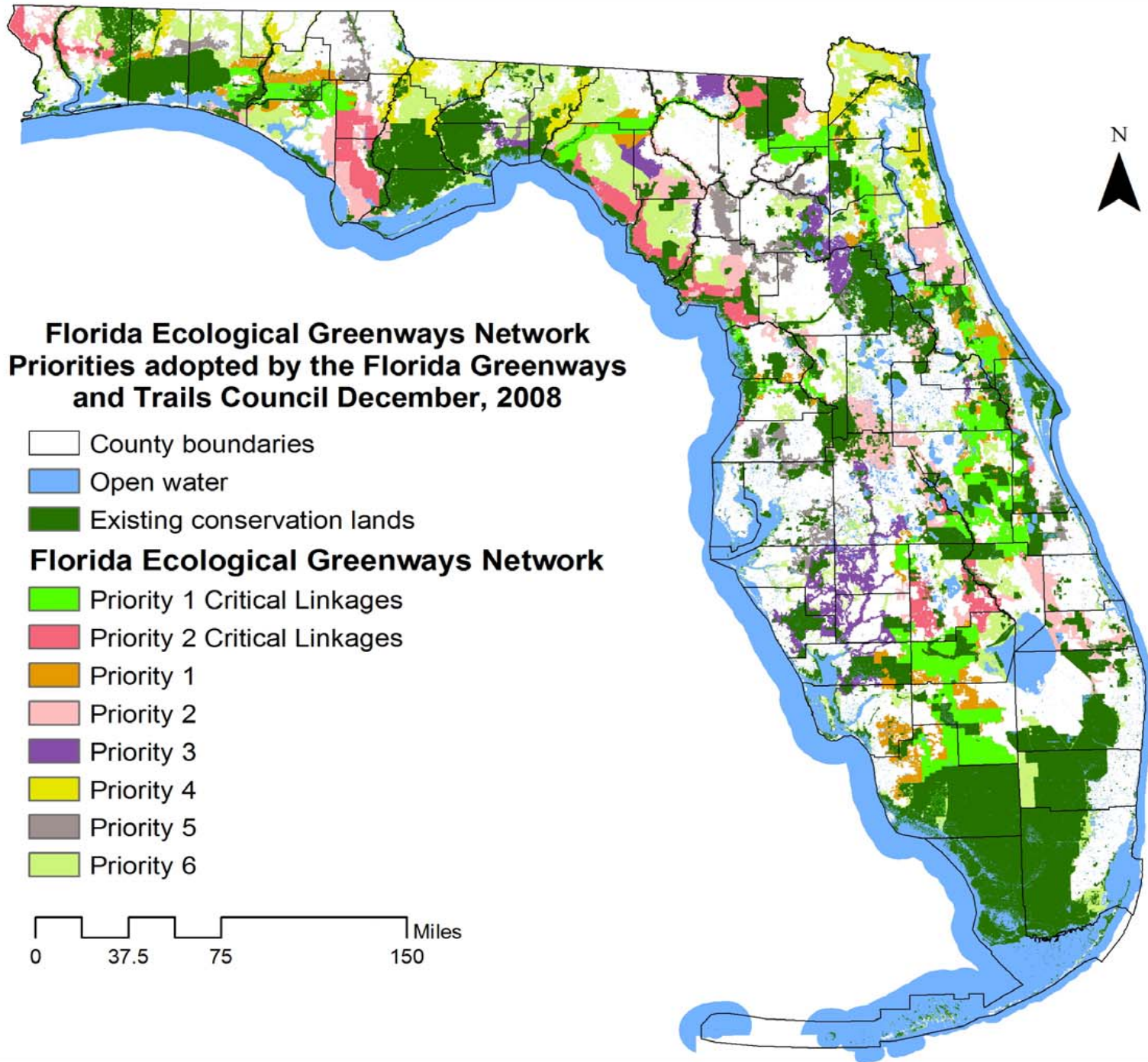
Land Use Category	Acres
Open Water	2,072,653
Existing Conservation Lands	9,706,439
Florida Forever Projects	1,822,274
Other Private Wetlands	2,963,792
Other Private Land	6,542,589
Total Acres	23,107,747

# Current and New Draft FEGN Comparison

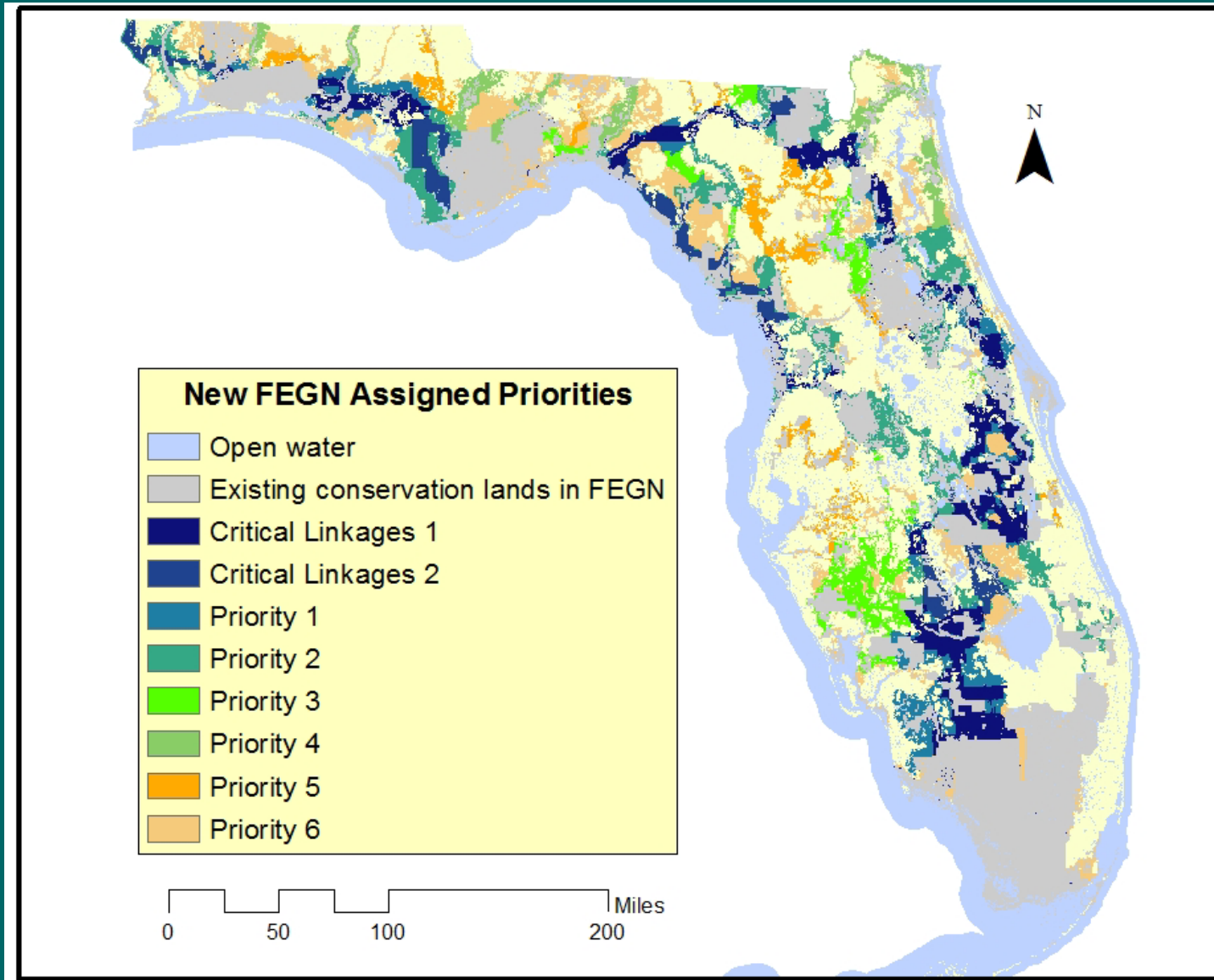


# Current and New FEGN Comparison (terrestrial only)

<b>Description</b>	<b>Acres</b>
In Both	19,030,153
In New FEGN Only	2,192,800
In Current FEGN Only	2,522,786



# Assigned Prioritization to New FEGN Base Boundary

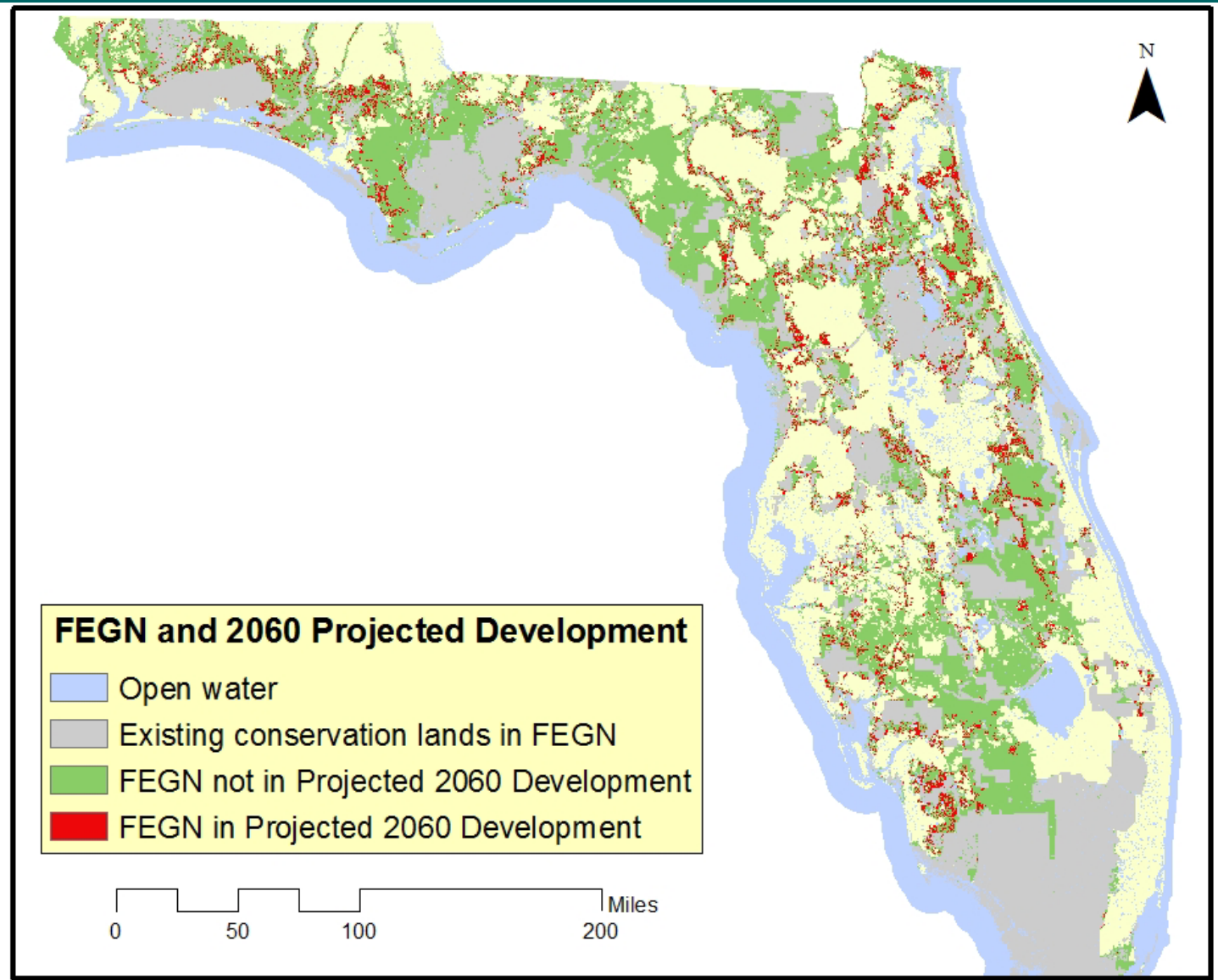




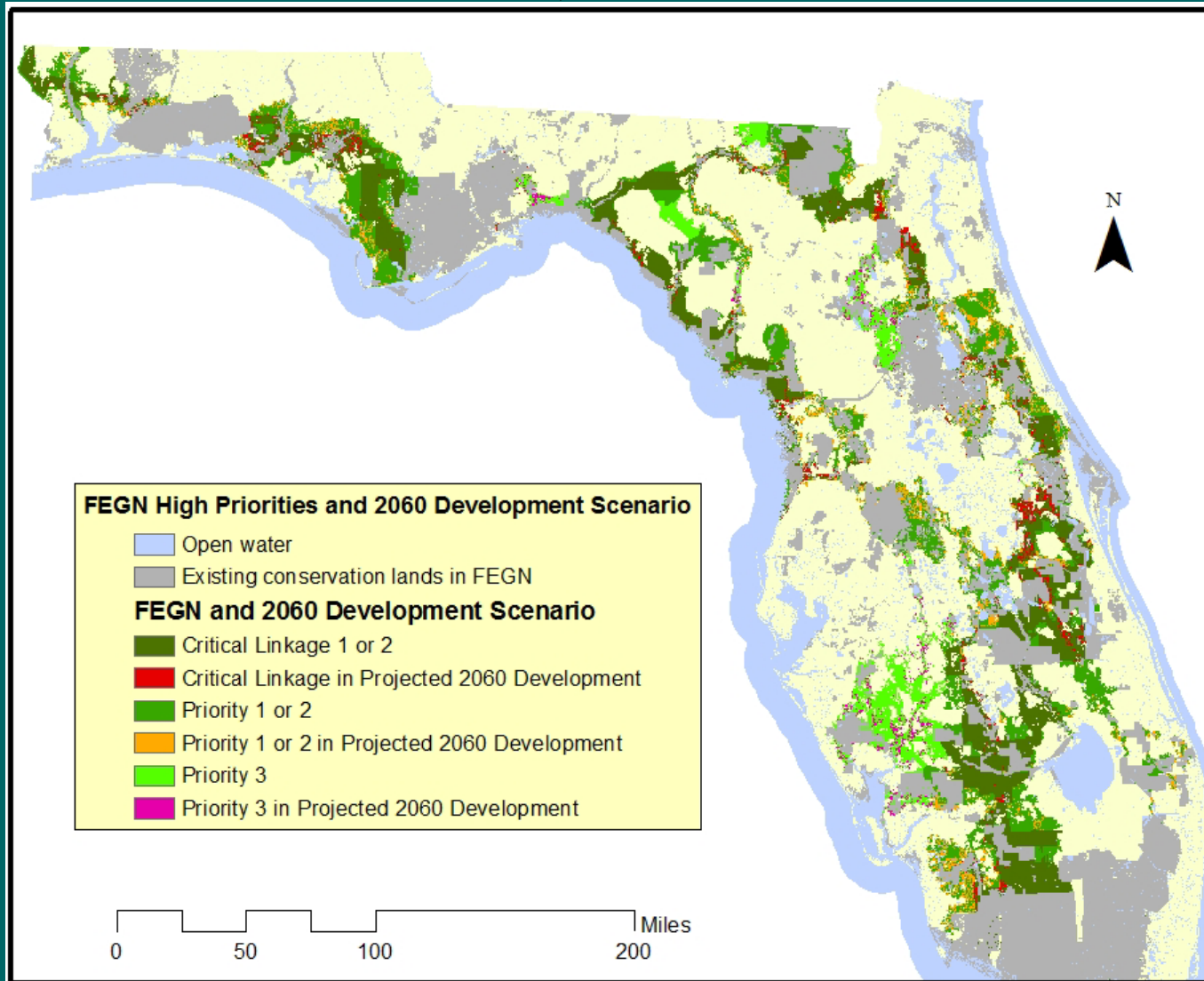
# Prioritization Considerations: Future Development and Sea Level Rise

- Based on past FEGN prioritization work and the goals of the FEGN Update project, we used three primary considerations for any alterations to existing FEGN priorities:
  - A new 2060 development projection from Zwick and Carr (UF) updated for the concurrent statewide SLR impact assessment project.
  - Comparison of the new FEGN and assigned priorities to Lidar-based DEM sea level rise projections.
  - Consideration of merging Critical Linkages P1 and Critical Linkages P2 and the P1 and P2 classes to create six priority classes instead of the current eight classes.

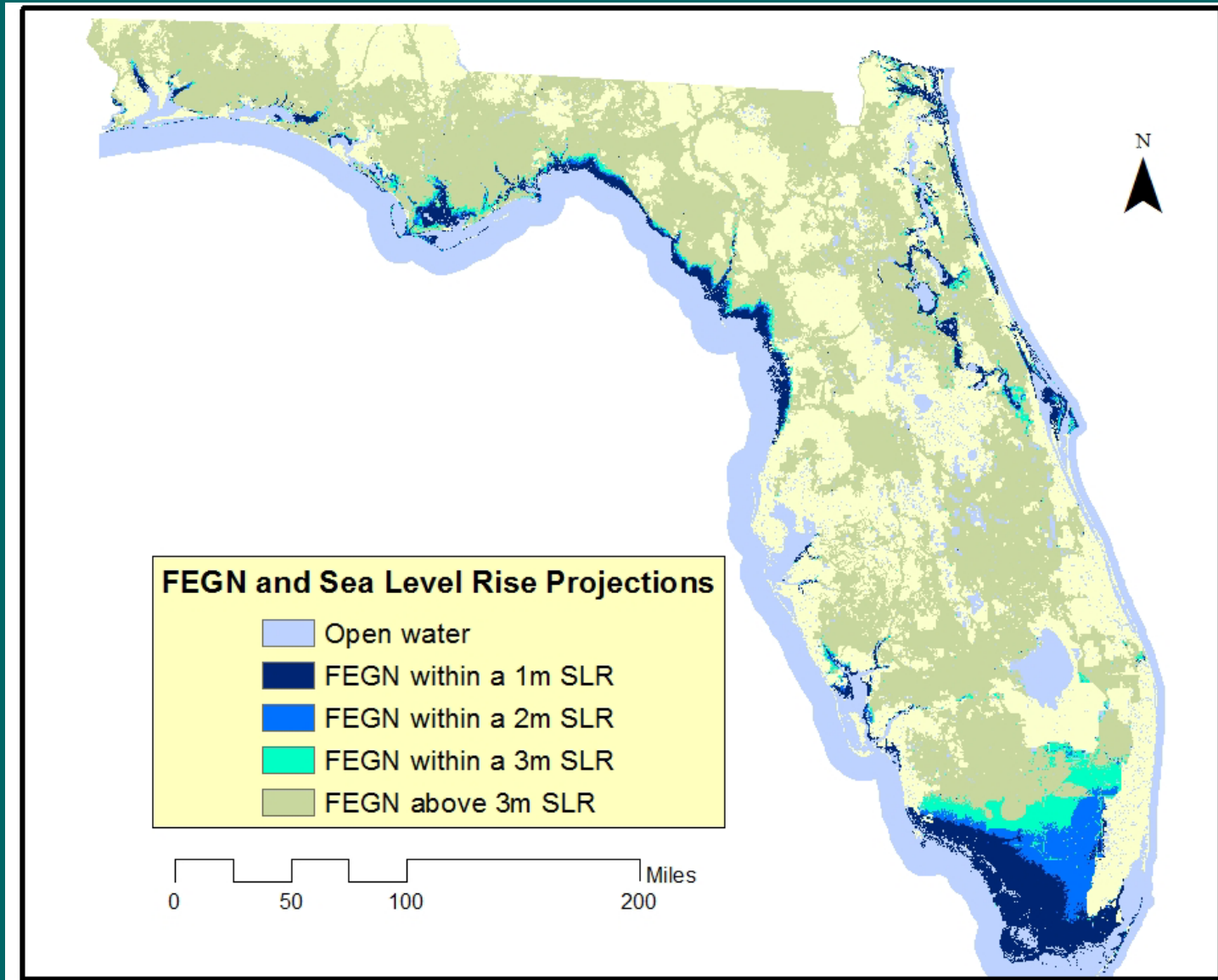
# Prioritization Considerations: FEGN and 2060 Growth Projection



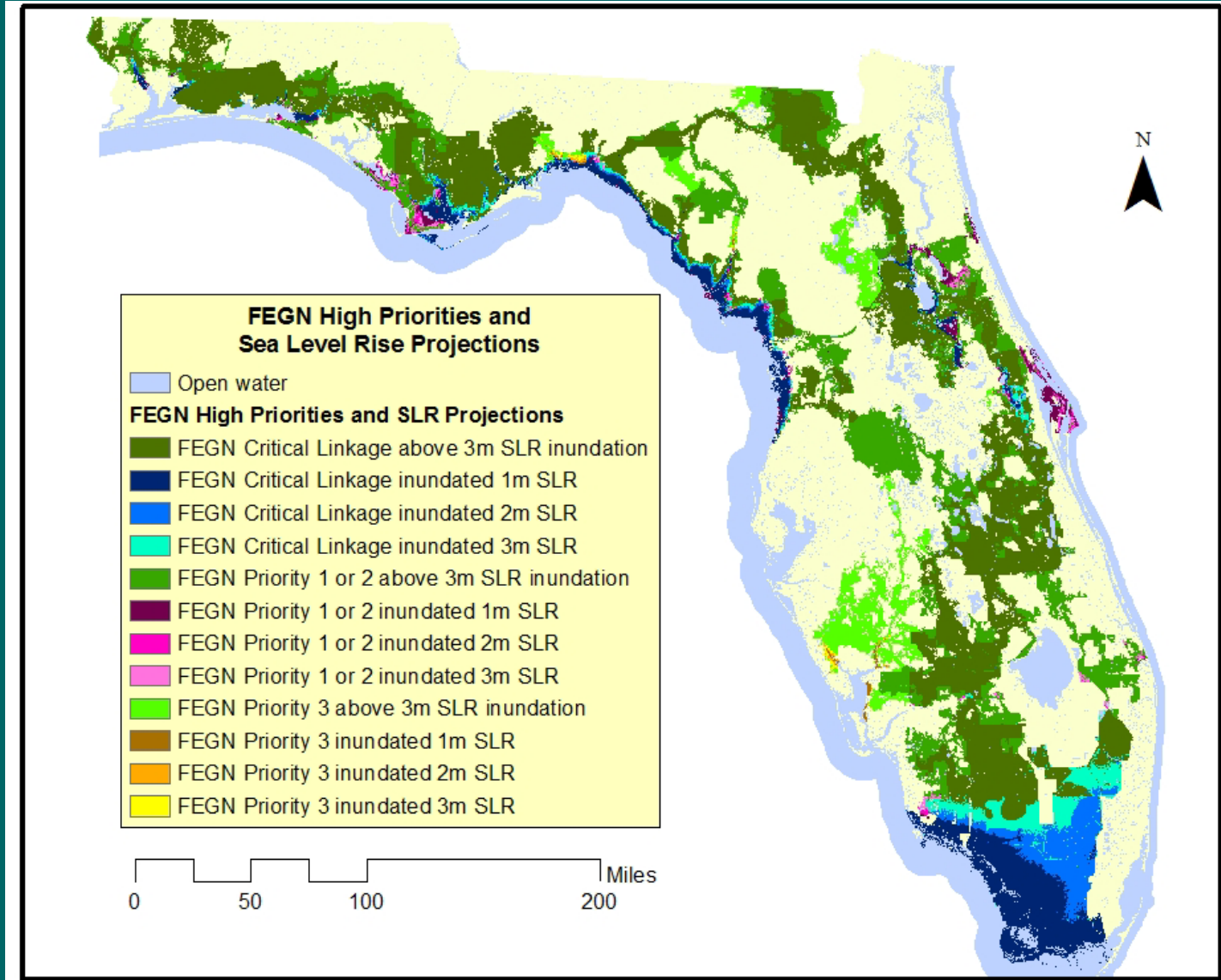
# Prioritization Considerations: FEGN High Priorities and 2060 Growth Projection



# Prioritization Considerations: FEGN and Sea Level Rise



# Prioritization Considerations: FEGN High Priorities and Sea Level Rise

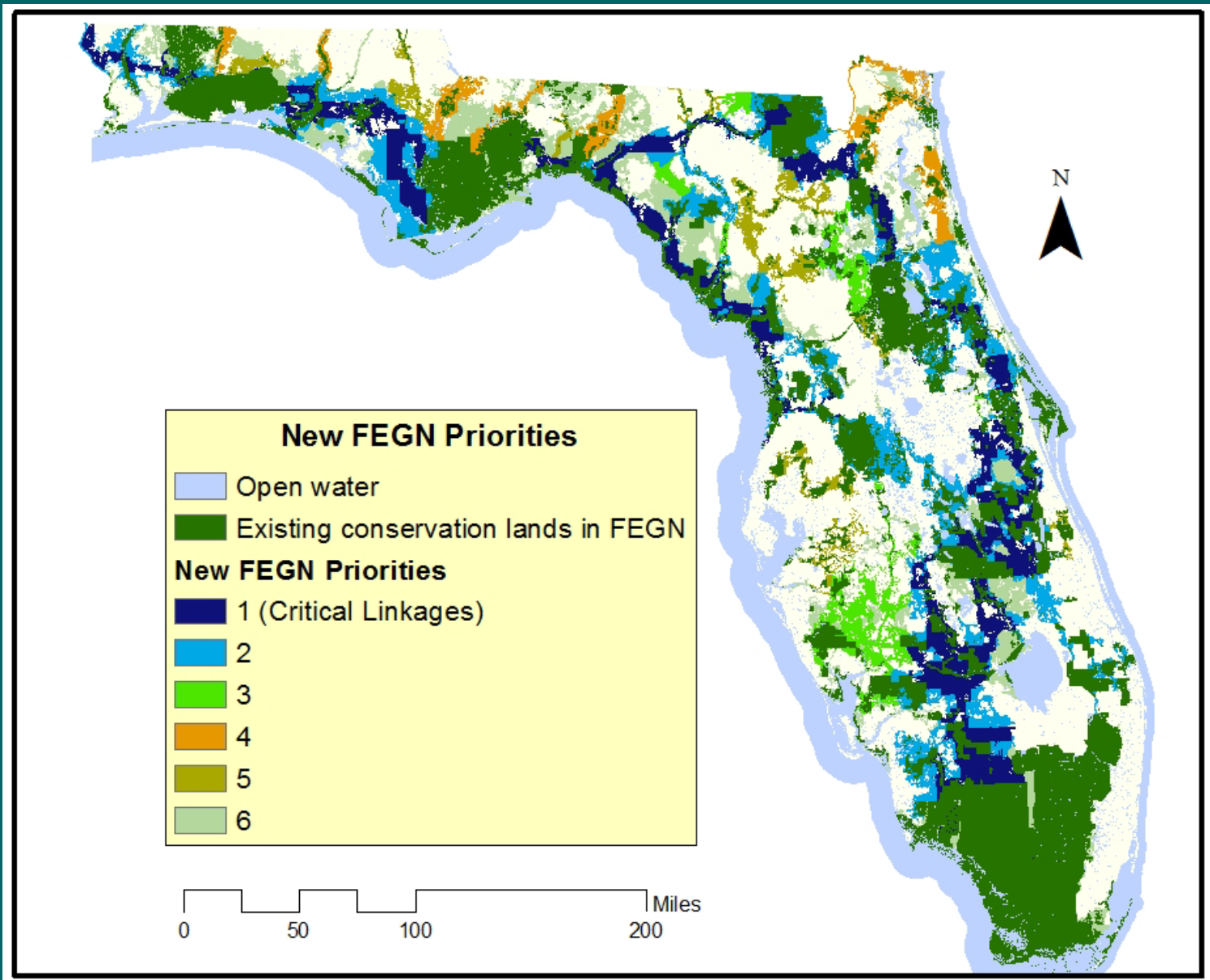


# Potential FEGN Prioritization Edits

Proposed edits to the FEGN priorities include:

- 1) Consider merging Critical Linkages P1 and Critical Linkages P2 and the P1 and P2 classes to create six priority classes instead of the current eight classes.
- 2) Expand the St. Marks Critical Linkage to address SLR south of Tallahassee.
- 3) Consider Critical Linkage or at least P3 status for corridor that circles Tallahassee to the north (to serve as an alternate for St. Marks Critical Linkage).
- 4) Expand Coastal Big Bend Critical Linkage and consider elevating priority of inland Big Bend corridor to address SLR.
- 5) Consider expanding Critical Linkage around strategic areas of the St. Johns River to address potential sea level rise impacts.
- 6) Peace River from P3 to Critical Linkage to provide an additional option to connect south and north Florida.
- 7) Kissimmee to Green Swamp (Four Corners) corridor from P1 to Critical Linkage to provide an additional option to connect south and north Florida.
- 8) Consider assigning higher priority to south to north corridors within north Florida that connect to areas of conservation significance in Georgia and Alabama.

# FEGN Update Prioritization



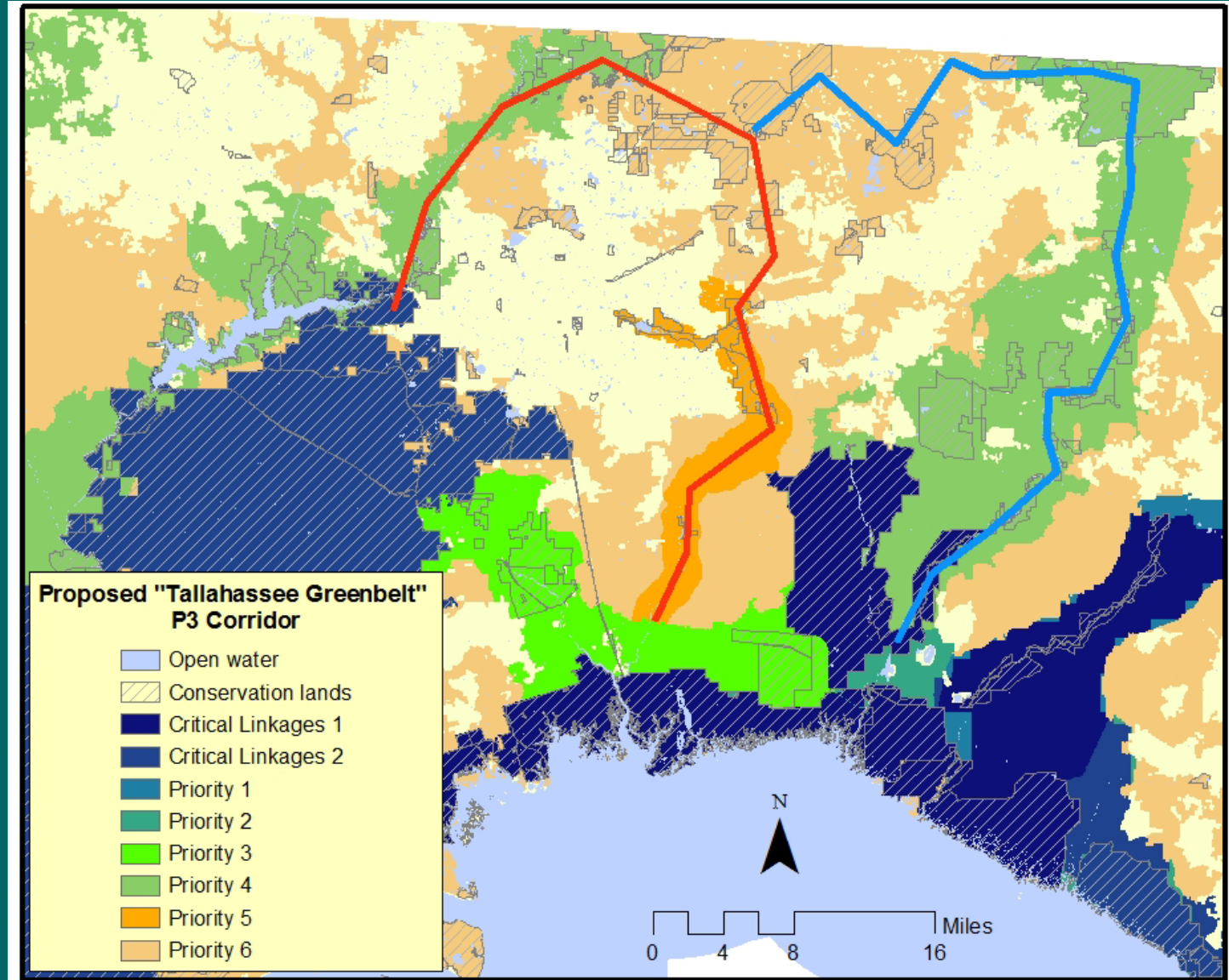
# FEGN High Priority Stats

Land Use Category	FEGN Priority Level	Acres
Open Water	Priority 1 (Critical Linkage)	1,078,086
Existing Conservation Lands	Priority 1 (Critical Linkage)	7,278,356
Florida Forever Projects	Priority 1 (Critical Linkage)	939,537
Other Private Wetlands	Priority 1 (Critical Linkage)	669,474
Other Private Land	Priority 1 (Critical Linkage)	1,465,675
Open Water	Priority 2	266,906
Existing Conservation Lands	Priority 2	1,102,105
Florida Forever Projects	Priority 2	450,427
Other Private Wetlands	Priority 2	769,167
Other Private Land	Priority 2	1,799,252



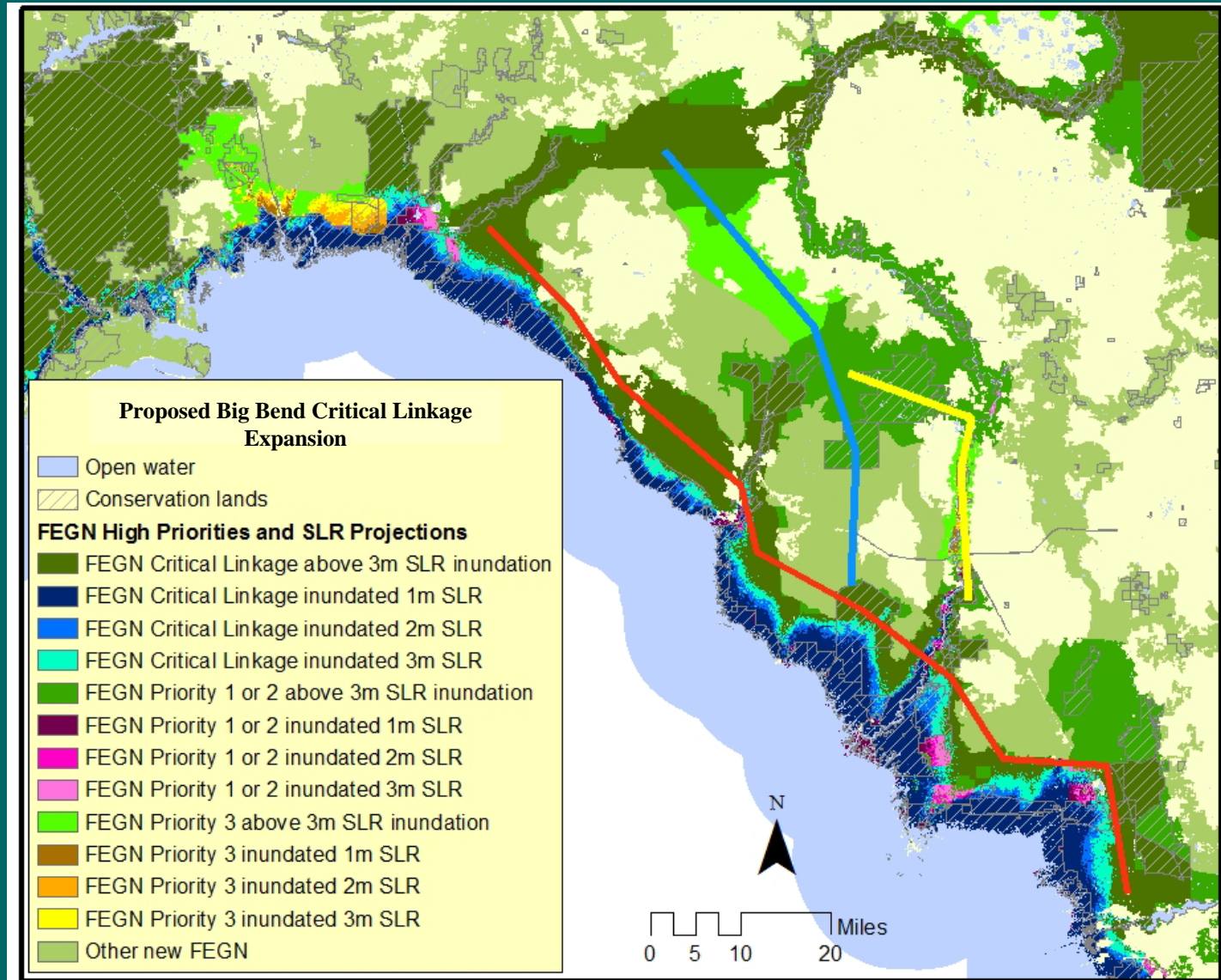
# Proposed Tallahassee Greenbelt P3 Corridor

St. Marks  
River option  
in red; Aucilla  
River option  
in blue



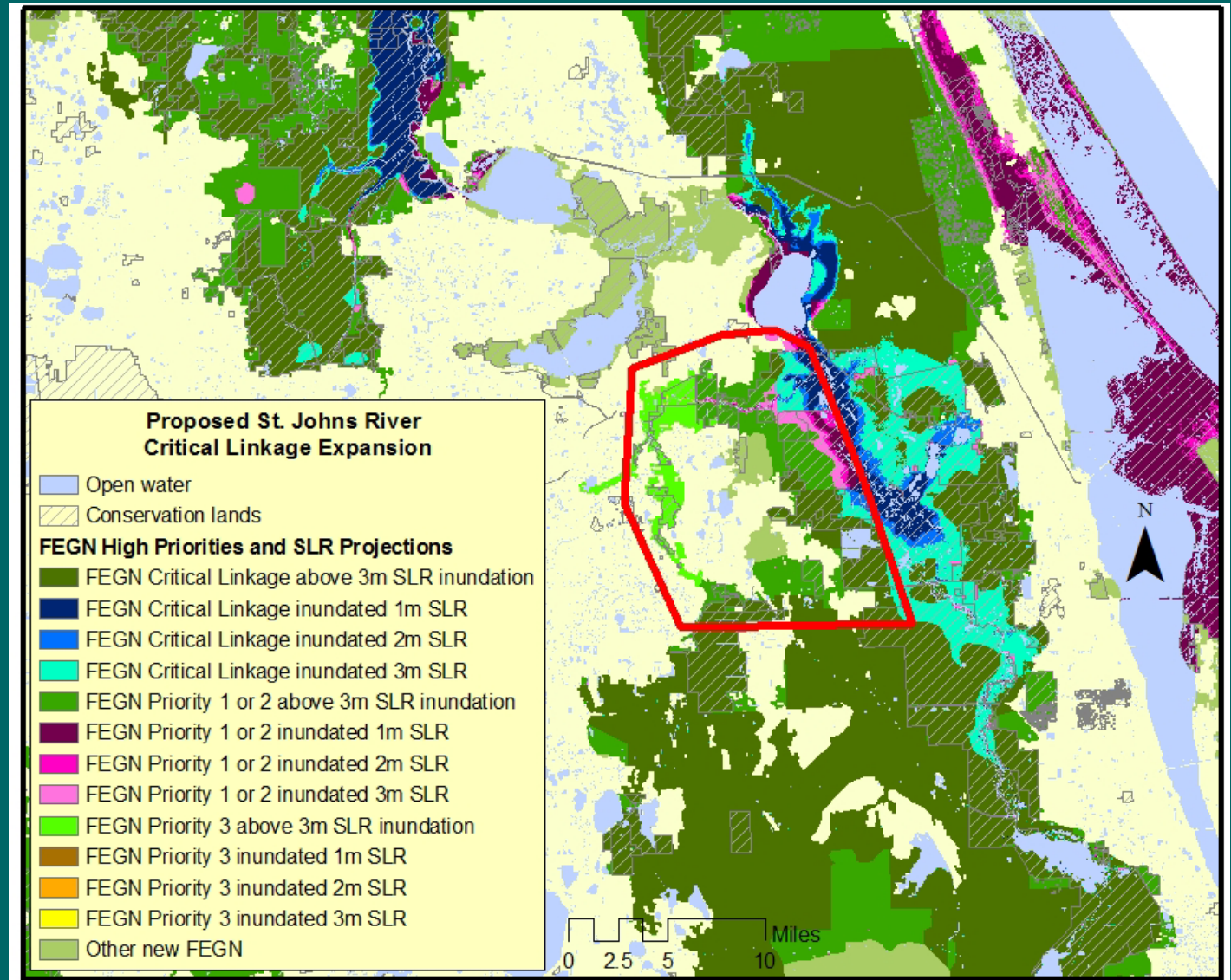
# Proposed Big Bend Critical Linkage Expansion

Coastal expansion  
option in red;  
Interior Critical  
Linkage option  
in blue; Suwannee  
River corridor  
option in yellow



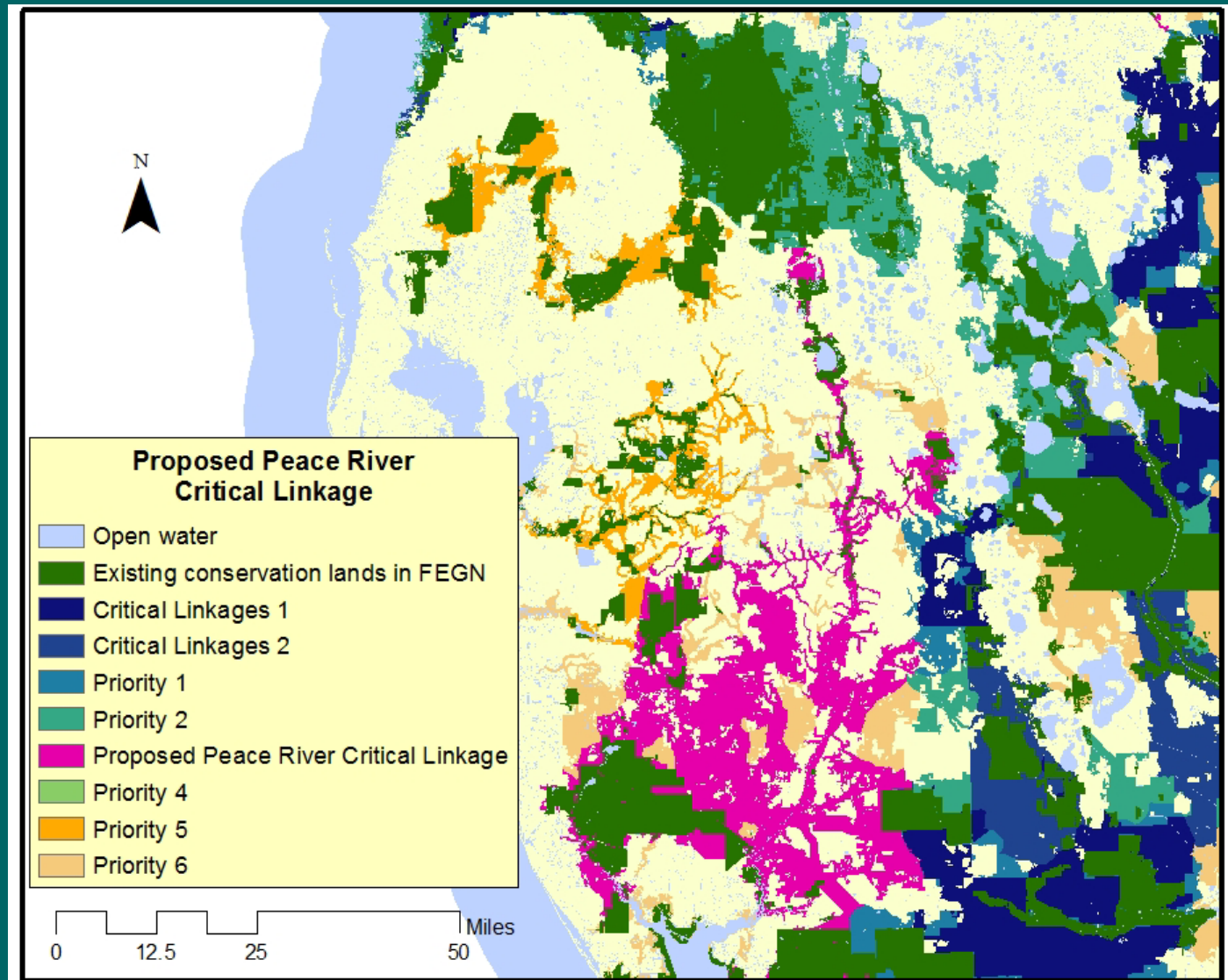
# Proposed Middle St. Johns River Critical Linkage Expansion

Potential area  
of expansion of  
the middle St.  
Johns River  
portion of this  
Critical Linkage  
in red



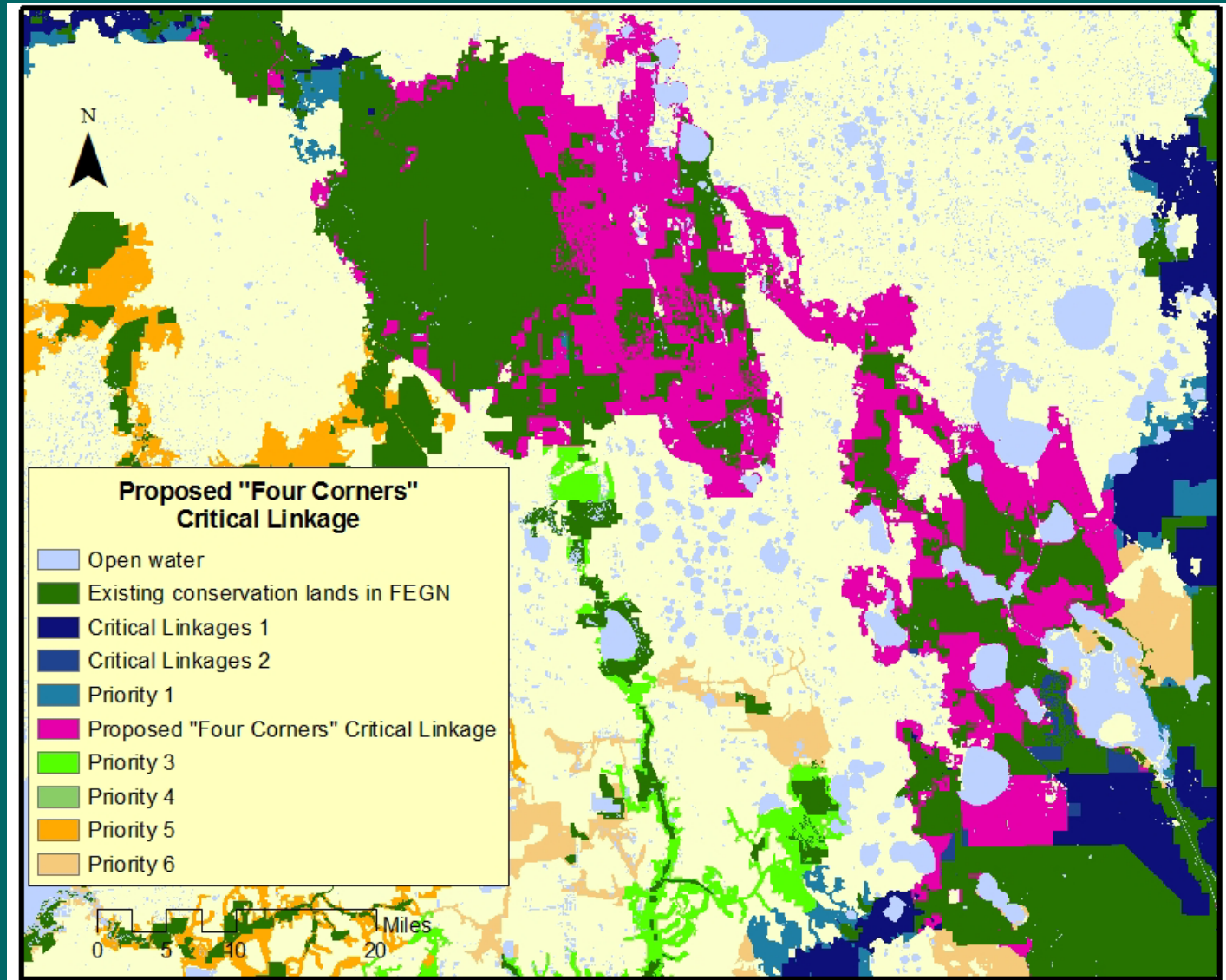
# Proposed Peace River Corridor Critical Linkage

Potential Peace  
River Critical  
Linkage in pink  
though some of  
the “fringe” areas  
would likely not  
be included.



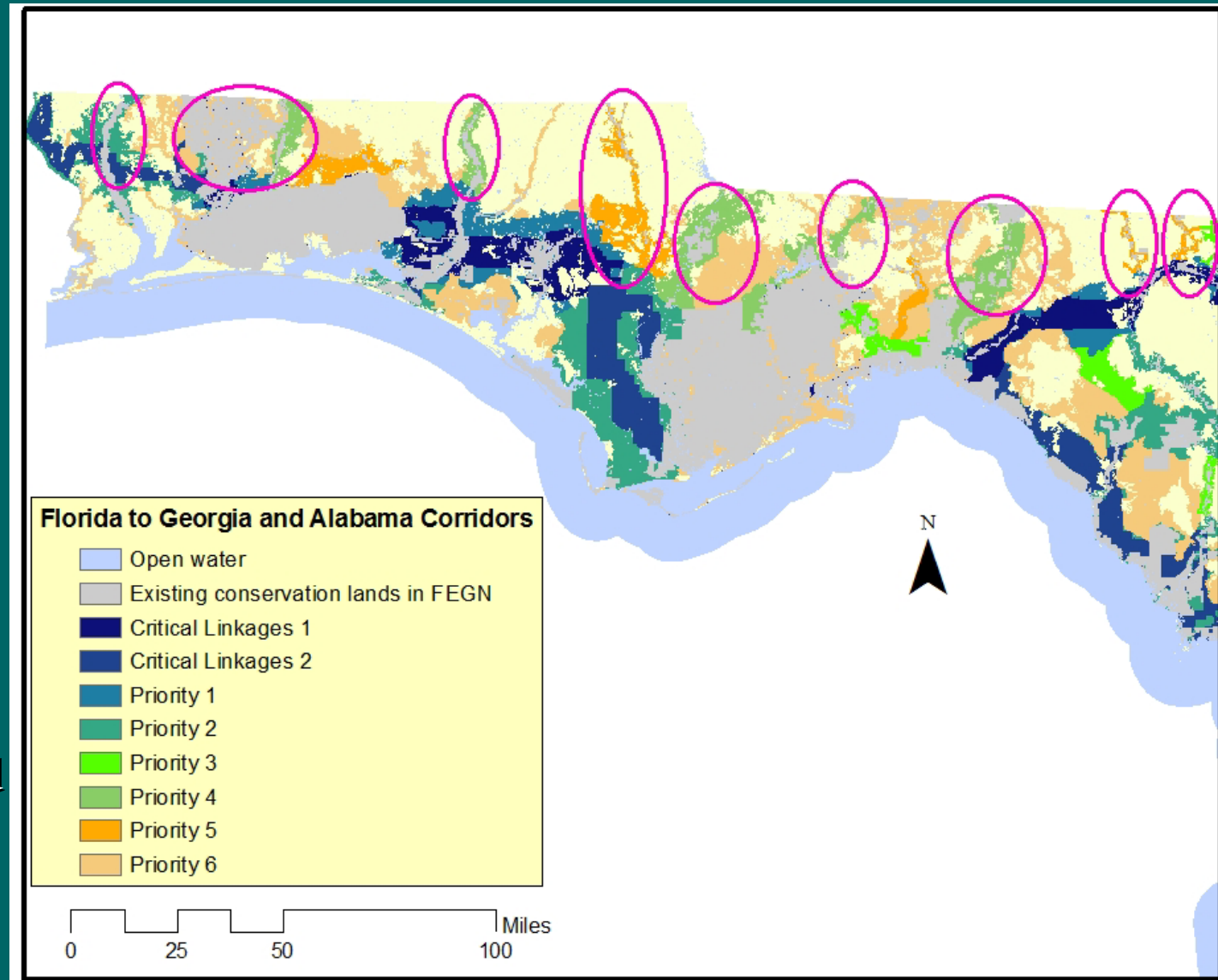
# Proposed “Four Corners” Critical Linkage

Potential Four Corners Critical Linkage in pink though some of the “fringe” areas would likely not be included.



# Proposed Florida to Georgia and Alabama Corridors

Potential Florida to Alabama or Georgia corridor options in pink; St. Mary's River in northeast Florida is another option not depicted on this map.



# FEGN Update Prioritization

