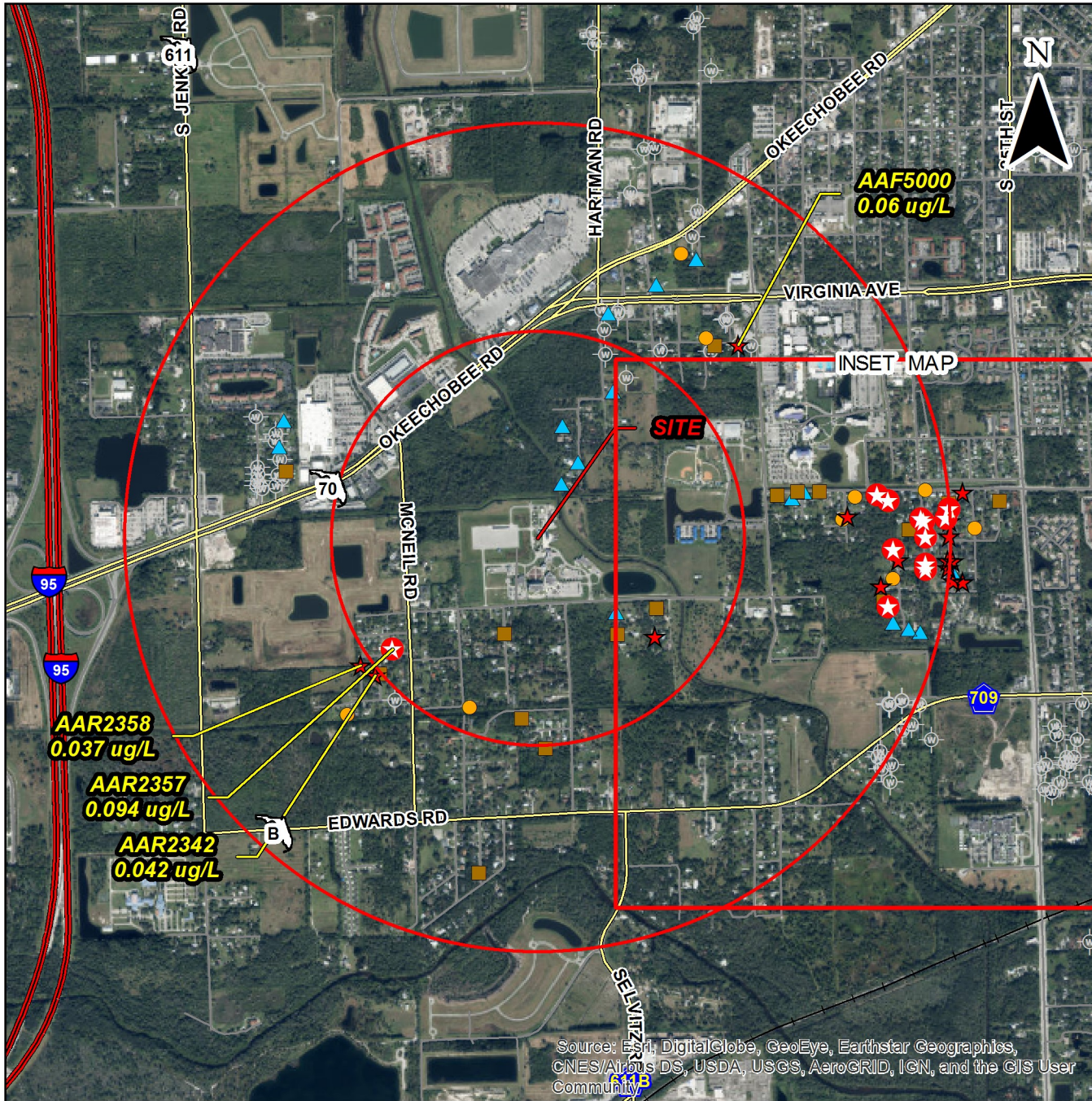


**INDIAN RIVER STATE  
COLLEGE FIRE  
TRAINING  
4600 KIRBY LOOP RD  
FORT PIERCE, FL 34981**



**PFAS SAMPLE RESULTS**

**TOTAL PFOA + PFOS**

- ★ >HAL
- ★ >1/2 HAL
- >1/4 HAL
- <1/4 HAL
- ▲ BDL
- ⊙ No Sample for this Analysis

**Wells PFAS Level**

- 12 >HAL
- 15 >1/2 HAL
- 10 >1/4 HAL
- 17 <1/4 HAL
- 16 Below Detection



**Florida  
Department of Health  
Bureau of  
Environmental Health**

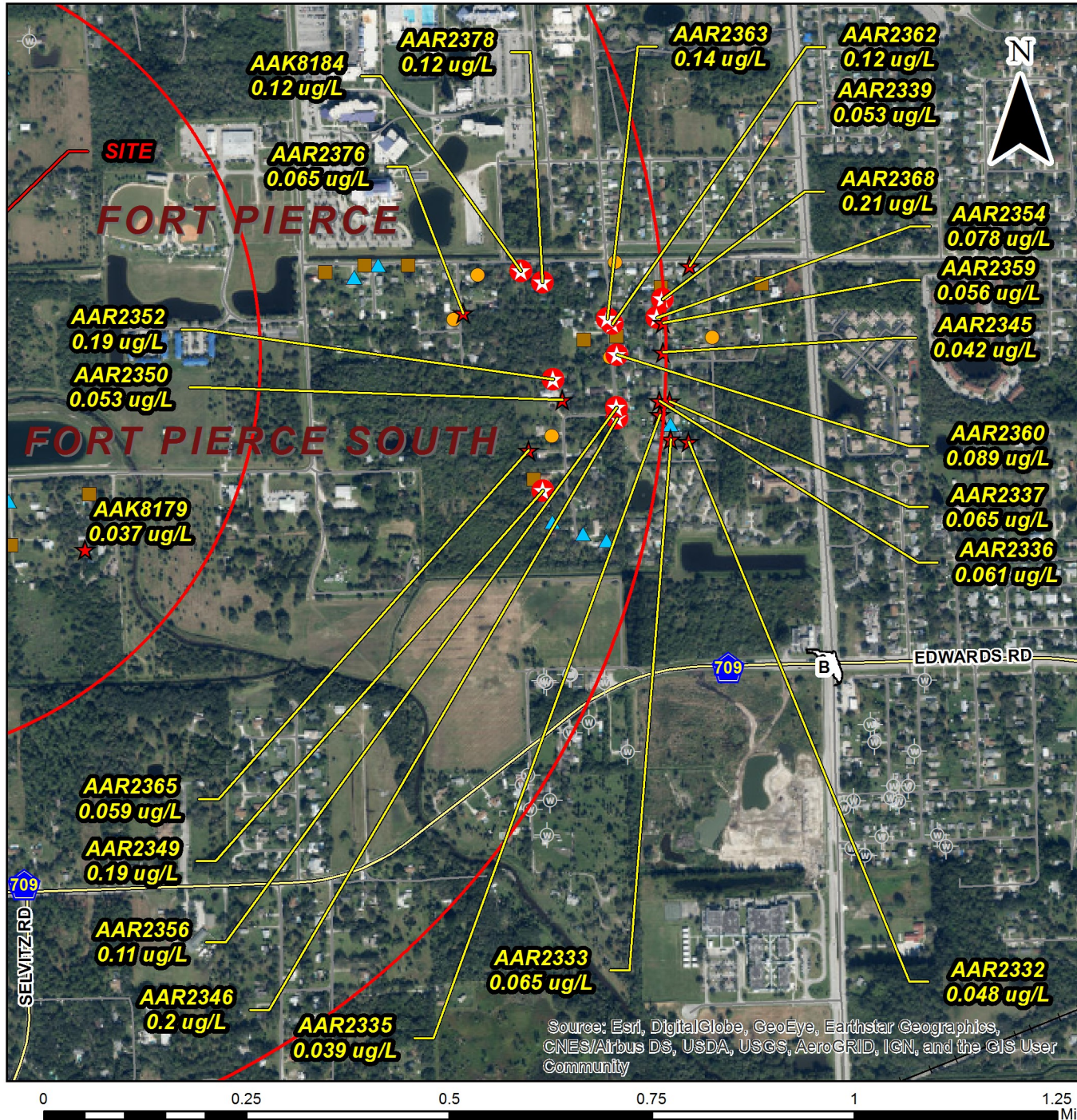
Source: Esri, DigitalGlobe, GeoEye, Earthstar Geographics, CNES/Airbus DS, USDA, USGS, AeroGRID, IGN, and the GIS User Community

Disclaimer  
This product is for reference purposes only and is not to be construed as a legal document. Any reliance on the information contained herein is at the user's own risk. The Florida Department of Health and its agents assume no responsibility for any use of the information contained herein or any loss resulting therefrom.

Date: 4/10/2020



**INDIAN RIVER STATE  
COLLEGE FIRE  
TRAINING  
4600 KIRBY LOOP RD  
FORT PIERCE, FL 34981**



**PFAS SAMPLE RESULTS**

**TOTAL PFOA + PFOS**

- ★ >HAL
- ★ >1/2 HAL
- >1/4 HAL
- <1/4 HAL
- ▲ BDL
- ⊙ No Sample for this Analysis

**Wells PFAS Level**

- 12 >HAL
- 15 >1/2 HAL
- 10 >1/4 HAL
- 17 <1/4 HAL
- 16 Below Detection



**Florida  
Department of Health  
Bureau of  
Environmental Health**

Disclaimer  
This product is for reference purposes only and is not to be construed as a legal document. Any reliance on the information contained herein is at the user's own risk. The Florida Department of Health and its agents assume no responsibility for any use of the information contained herein or any loss resulting therefrom.

Date: 4/10/2020