

Perdido Pitcher Plant Prairie

Critical Natural Lands

Escambia County

<i>Year Added to Priority List</i>	1995
<i>Project Acres</i>	6,880
<i>Acquired Acres</i>	4,654
<i>Cost of Acquired Acres</i>	\$27,378,939
<i>Remaining Project Acres</i>	2,226
<i>2023 Assessed Value of Remaining Acres</i>	\$37,124,222

Purpose for State Acquisition

The Perdido Pitcher Plant Prairie project will conserve some of the last remnants of a landscape of wet grassy prairies, pine flatwoods and swamps found in the western Panhandle and unique to the northern Gulf Coast. The project will protect important habitat for imperiled pitcher plants, protect the water quality of Perdido Bay and Big Lagoon and provide the public with opportunities to learn about this unique ecosystem. Acquisition of the project is also essential to the U.S. Navy's base-buffering initiative.

General Description

The project covers a large undeveloped area where low ridges of ancient dune lines alternate with slightly lower intervening swales. The project also includes over 2 miles of frontage on Perdido Bay. The wet prairies in the area are some of the last examples of one of the most diverse plant communities in the Southeast U.S. They support one of the largest stands of white-topped pitcher plants in Florida, along with almost 100 other plant species. The prairies have intact ecotones of basin swamp, scrub, sandhill and mesic flatwood communities. The large expanses of flatwoods and basin swamps on the site provide habitat for many species. However, the site's uplands are vulnerable to development, particularly in the Tarkiln Bayou area. No archaeological sites are known in the project.

FNAI Element Occurrence Summary

<u>FNAI Elements</u>	<u>Score</u>
<i>Wherry's redblower pitcherplant</i>	G3T1?/S3
Escambia crayfish	G2/S1S2
<i>large-leaved jointweed</i>	G3/S3

Public Use

The project is designated for use as a state park, providing opportunities for swimming, fishing, boating, camping, hiking and nature appreciation.



Acquisition Planning

1994

On December 7, 1994, the Land Acquisition Advisory Council added the Perdido Pitcher Plant Prairie project to the Conservation and Recreational Lands Priority List. The fee-simple acquisition proposal, sponsored by Florida Natural Areas Inventory, consisted of approximately 5,515 acres, multiple owners and had a taxable value of \$3,210,940.

1998

On October 15, 1998, the Land Acquisition Advisory Council redefined the essential parcels.

On December 3, 1998, the Land Acquisition Advisory Council approved a fee-simple 385-acre addition to the project boundary. It was sponsored by the Friends of the Prairie group, consisted of 23 owners and had a taxable value of \$380,371.

2010

In April 2010, the Acquisition and Restoration Council approved a 658-acre reduction to the project boundary due to residential/commercial/infrastructure development.

2011

On December 9, 2011, the Acquisition and Restoration Council placed the project in the Critical Natural Lands category.

2023

In 2023, DEP acquired, in fee, 23.85 acres in Escambia County from Pleasant Gove Investments LLC.

Coordination

The Nature Conservancy, was an intermediary in the project, is considered a partner as well as the Northwest Florida Water Management District.

Management Policy Statement

The primary management goals of the Perdido Pitcher Plant Prairie project are to conserve and protect environmentally unique and irreplaceable lands that contain native flora and fauna representing a natural area unique to, or scarce within, a region of the state; to conserve and protect significant habitat for native and imperiled species; and to conserve, protect, manage or restore important ecosystems and landscapes to enhance or protect significant natural resources which local or state regulatory programs cannot adequately protect. Secondary goals are to provide areas, including recreational trails, for natural-resource-based recreation and to preserve significant archaeological or historical sites.

Manager(s)

The Division of Recreation and Parks is the recommended manager. Lands acquired within the project boundary are being managed as Tarkiln Bayou Preserve State Park.

Management Prospectus

Qualifications for State Designation

The project will enhance the protection of rare and sensitive resources. The project will also contribute to providing the public with natural resource-based activities and critical open space.





Conditions Affecting Intensity of Management

The Perdido Pitcher Plant Prairie project is a high-need management area requiring intensive resource management and protection. Depending on the nature and extent of public use, there may be additional needs for management of activities and facilities.

Management Implementation, Public Access, Site Security and Protection of Infrastructure

Within the first year after acquisition, management activities will concentrate on site security, natural and cultural resource protection, and development of a plan for long-term public use and resource management consistent with the stated goals and objectives of the approved Perdido Pitcher Plant Prairie Project Assessment.

Revenue-generating Potential

No significant revenue is expected to be generated initially. After the initial acquisition, it will likely be several years before any significant public-use facilities are developed. The amount of any future revenue generated would depend on the nature and extent of public use and facilities.

Cooperators in Management Activities

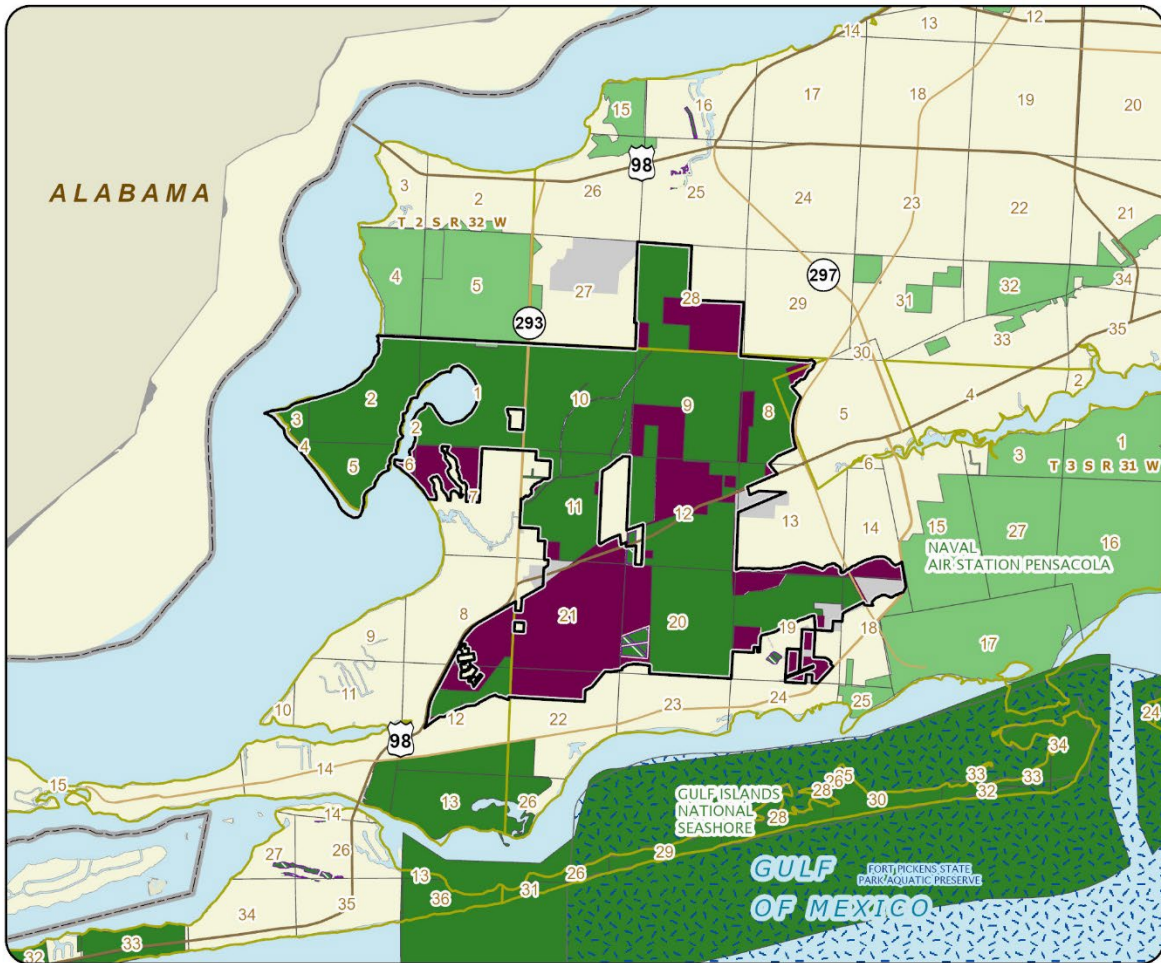
No other agencies are recommended for management of the project.

Management Cost Summary

<u>DRP</u>	<u>Startup</u>	<u>Recurring</u>
Source of Funds	CARL	CARL
Salary	\$50,515	\$50,515
OPS	\$10,000	\$10,000
Expense	\$61,307	\$61,307
OCO	\$106,000	\$1,000
FCO	\$178,000	\$0
TOTAL	\$405,822	\$122,822

Source: Management Prospectus as originally submitted





PERDIDO PITCHER PLANT PRAIRIE

ESCAMBIA COUNTY

