

Pumpkin Hill Creek

Partnerships and Regional Incentives

Duval County

| | |
|---|---------------|
| <i>Year Added to Priority List</i> | 1994 |
| <i>Project Acres</i> | 24,880 |
| <i>Acquired Acres</i> | 18,440 |
| <i>Cost of Acquired Acres</i> | \$15,668,766 |
| <i>Remaining Project Acres</i> | 6,440 |
| <i>2023 Assessed Value of Remaining Acres</i> | \$281,807,420 |

Purpose for State Acquisition

The Pumpkin Hill Creek project will protect one of the larger areas of natural uplands left in Duval County and will enhance water quality and protection for the Nassau and St. Johns rivers. The project will support the foundation of an important fishery, protect wading bird rookeries, and provide the public with opportunities for resource-based recreation such as fishing, hunting, hiking and canoeing.

General Description

As a remnant of relatively intact natural communities in the urban landscape of Duval County, the Pumpkin Hill Creek project will protect upland buffers to the Nassau River-St. Johns River Marshes Aquatic Preserve. The aquatic preserve (an Outstanding Florida Water) supports a significant commercial and recreational fishery. Besides sandhill, scrubby flatwoods, wet flatwoods and salt marsh, the project contains high quality maritime hammock. It also provides habitat for several rare species and contains two colonial wading bird rookeries, one of which is used by the federally endangered wood stork. Manatees frequent both the St. Johns and Nassau rivers and move into tidal creeks (such as Hill Creek and Clapboard Creek) adjacent to the project. The cultural resource value of the project is high, as the project contains 14 archaeological sites including the ruins of the early 19th century Fitzpatrick Plantation house.



FNAI Element Occurrence Summary

| <u>FNAI Elements</u> | <u>Score</u> |
|--------------------------------|---------------------|
| Striped newt | G2G3/S2 |
| Piping plover | G3/S2 |
| Gopher tortoise | G3/S3 |
| Bird Rookery | G5/SNRB |
| <i>pondspice</i> | G3?/S2 |
| Worthington's marsh wren | G5T3/S2 |
| Macgillivray's seaside sparrow | G4T3/S2 |
| Wood stork | G4/S2 |
| Roseate spoonbill | G5/S2 |
| Atlantic salt marsh mink | G5T3/S3 |
| Least tern | G4/S3 |
| Bald eagle | G5/S3 |

Public Use

The project is designated as a buffer preserve.

Acquisition Planning

1983

In 1983, Duval Audubon Society acquired Cedar Point Sanctuary (7.69 acres).

1993

On December 9, 1993, the Land Acquisition Advisory Council added the Pumpkin Hill Creek project to the Conservation and Recreational Lands Priority List. The fee-simple acquisition (sponsored by the city of Jacksonville and St. Johns River Water Management District) was approximately 6,292 acres consisting of 25 parcels, 12 owners and a taxable value of \$9,383,700. Essential parcels included North Shore (acquired by The Nature Conservancy using Cedar Bay Cogeneration Project mitigation funds), Verdie Forest and Penland (acquired jointly with the St. Johns River Water Management District), and Tison and Birchfield (acquired by the St. Johns River Water Management District).

1996

On May 2, 1996, the city of Jacksonville acquired 352 acres to create Cedar Point Preserve.

1997

On March 14, 1997, the Land Acquisition Advisory Council approved a fee-simple, 635-acre addition (Sample Swamp property) to the project boundary. It was sponsored by the city of Jacksonville and consisted of multiple owners and parcels and a taxable value of \$995,638.

1998

On October 15, 1998, the Land Acquisition and Management Advisory Council designated an additional 1,419 acres as essential including Sample Swamp, City National, Beasley, Wingate and two small connecting parcels.

2000

On October 17, 2000, the Acquisition and Restoration Council approved a fee-simple, 18,995-acre addition to the project boundary. The addition, sponsored by the city of Jacksonville, The Nature Conservancy and





the Office of Resilience and Coastal Protection, consisted of 93 owners, 176 parcels and a taxable value of \$7,624,669.

2002

On December 13, 2002, the North Florida Land Trust acquired Pescatello Island (25.12 acres).

On December 27, 2002, the Timucuan Trails Parks Foundation (formerly Preservation North Florida, Inc.) acquired Starratt Road (207.1 acres).

2003

On January 6, 2003, Duval County/city of Jacksonville acquired Betz Tiger Point Preserve (548 acres), of which 517 acres are within the project boundary.

On February 7, 2003, the Acquisition and Restoration Council approved a fee-simple, 73-acre addition to the project boundary. It was sponsored by The Nature Conservancy and consisted of three owners, five parcels and a taxable value of \$399,726.

On December 5, 2003, the Acquisition and Restoration Council moved the project to Group A of the 2004 Florida Forever Priority List.

2004

On December 3, 2004, the Acquisition and Restoration Council removed 658.3 acres that consisted of four parcels with a taxable value of \$541,781 from the project boundary. The project was moved to Group B of the 2005 Florida Forever Priority List.

2005

On December 9, 2005, the Acquisition and Restoration Council moved the project to Group A of the 2006 Florida Forever Priority List.

2006

On August 11, 2006, the Acquisition and Restoration Council approved a fee-simple, 713-acre addition to the project boundary. It was sponsored by the Division of Recreation and Parks in coordination with the city of Jacksonville Preservation Project and consisted of 41 ownerships, 50 parcels and a taxable value of \$4,180,827. The Division of Recreation and Parks will manage the addition except for 24.75 acres in Component 11, owned by Hughes, which will be managed by the city of Jacksonville. The parcels have been designated as essential.

2011

On December 9, 2011, the Acquisition and Restoration Council placed the project in the Partnerships and Regional Incentives category.

On December 20, 2011, the North Florida Land Trust acquired 7.14 acres and created Big Talbot Island Preserve.

2012

On December 13, 2012, the North Florida Land Trust acquired 442.67 acres in Big Talbot Island Preserve.

2013

On June 3, 2013, the city of Jacksonville acquired Seaton Creek Historic Preserve (857.88 acres), of which 186 acres are within the project boundary.





On September 9, 2013, the North Florida Land Trust acquired Noble Enge Jr. Preserve (410.76 acres) as a donation.

2014

On April 11, 2014, the Acquisition and Restoration Council removed 888.46 acres from the project boundary.

2015

On March 26, 2015, the North Florida Land Trust acquired 1.23 acres in Big Talbot Island Preserve.

On December 21, 2015, the North Florida Land Trust acquired Nassau River Marshes Preserve (2,586.44 acres), of which 1,163.51 acres are within the project boundary.

2016

On March 3, 2016, the North Florida Land Trust acquired 6.5 acres and created Bogey Creek Preserve.

On April 22, 2016, the North Florida Land Trust acquired 598.51 acres in Big Talbot Island Preserve.

On December 5, 2016, the North Florida Land Trust acquired 6.43 acres in Big Talbot Island Preserve.

2017

On October 5, 2017, the North Florida Land Trust acquired 62.5 acres in Bogey Creek Preserve.

2022

In 2022, DEP acquired, in fee, 239.83 acres from The Trust for Public Land that will be managed as part of Pumpkin Hill Creek Preserve State Park.

2023

In October 2023, the Acquisition and Restoration Council added two parcels totaling approximately 129 acres in Nassau County to the project boundary.

Coordination

The Nature Conservancy is an intermediary in the project. Resolutions in support of the project include the St. Johns River Water Management District, who is in support of a shared acquisition. The St. Johns River Water Management District, Office of Resilience and Coastal Protection, Florida Communities Trust and city of Jacksonville are acquisition partners.

Management Policy Statement

The primary goals of management of the Pumpkin Hill Creek project are to conserve, protect, manage, and/or restore important ecosystems to enhance or protect significant surface water, coastal, recreational, timber, fish or wildlife resources; to provide areas, including recreational trails, for natural resource-based recreation; and to preserve significant archaeological or historical sites.

Manager(s)

The Division of Recreation and Parks, St. Johns River Water Management District, city of Jacksonville and federal government all manage lands within the project boundary.





Management Prospectus

Qualifications for State Designation

The Pumpkin Hill Creek project includes uplands centrally located in the Nassau River-St. Johns River Marshes Aquatic Preserve. The project qualifies as a state buffer preserve because it will protect uplands important to the hydrology of the sensitive tidal marshes of the aquatic preserve.

Conditions Affecting Intensity of Management

The Pumpkin Hill Creek project generally includes lands that are low need tracts, requiring basic resource management and protection.

Management Implementation, Public Access, Site Security and Protection of Infrastructure

Long-range plans for the project will generally be directed toward restoring disturbed areas to (or close to) their original conditions, as well as protecting rare and imperiled species. An all-season burning program will use existing roads, black lines, foam lines and natural breaks to contain fires whenever possible. Infrastructure will be in disturbed areas and will be the minimum needed for management and public access.

Revenue-generating Potential

Portions of the project are composed of manageable pinelands that could be used to help offset operational costs. Any estimate of the revenue from the harvest of these pinelands depends upon a detailed assessment of the value of the timber and upon the amount of harvesting that is consistent with protection of natural resources on the project. No revenue is expected to be generated for some years.

Cooperators in Management Activities

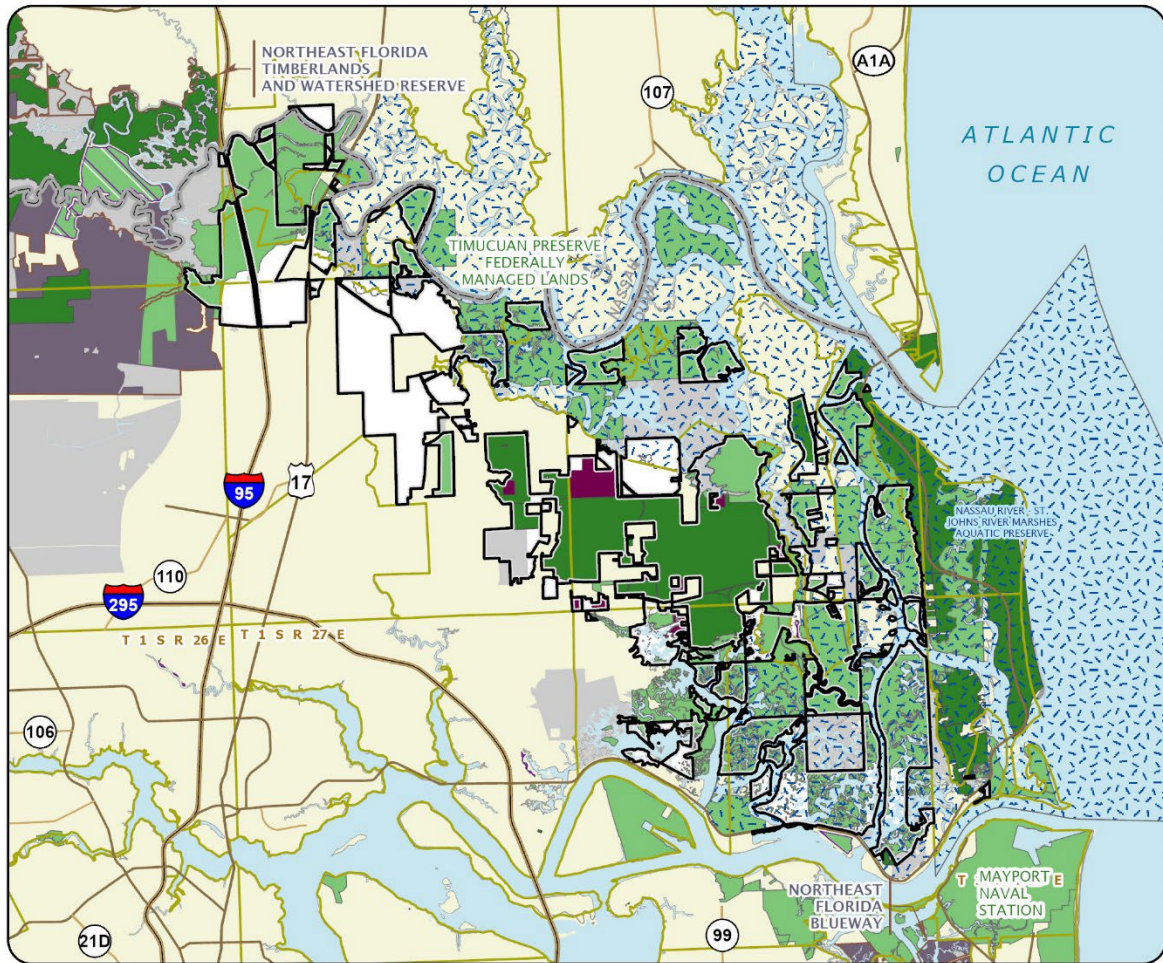
The St. Johns River Water Management District will cooperate in managing the project.

Management Cost Summary

| DRP | Startup | Recurring |
|-----------------|--------------|--------------|
| Source of Funds | CARL/LATF | not provided |
| Salary | \$62,079.65 | not provided |
| OPS | \$28,631.85 | not provided |
| Expense | \$24,762.68 | not provided |
| OCO | \$0.00 | not provided |
| Special | \$0.00 | not provided |
| FCO | \$50,000.00 | not provided |
| TOTAL | \$165,474.18 | not provided |

Source: Management Prospectus as originally submitted





PUMPKIN HILL CREEK

DUVAL COUNTY

