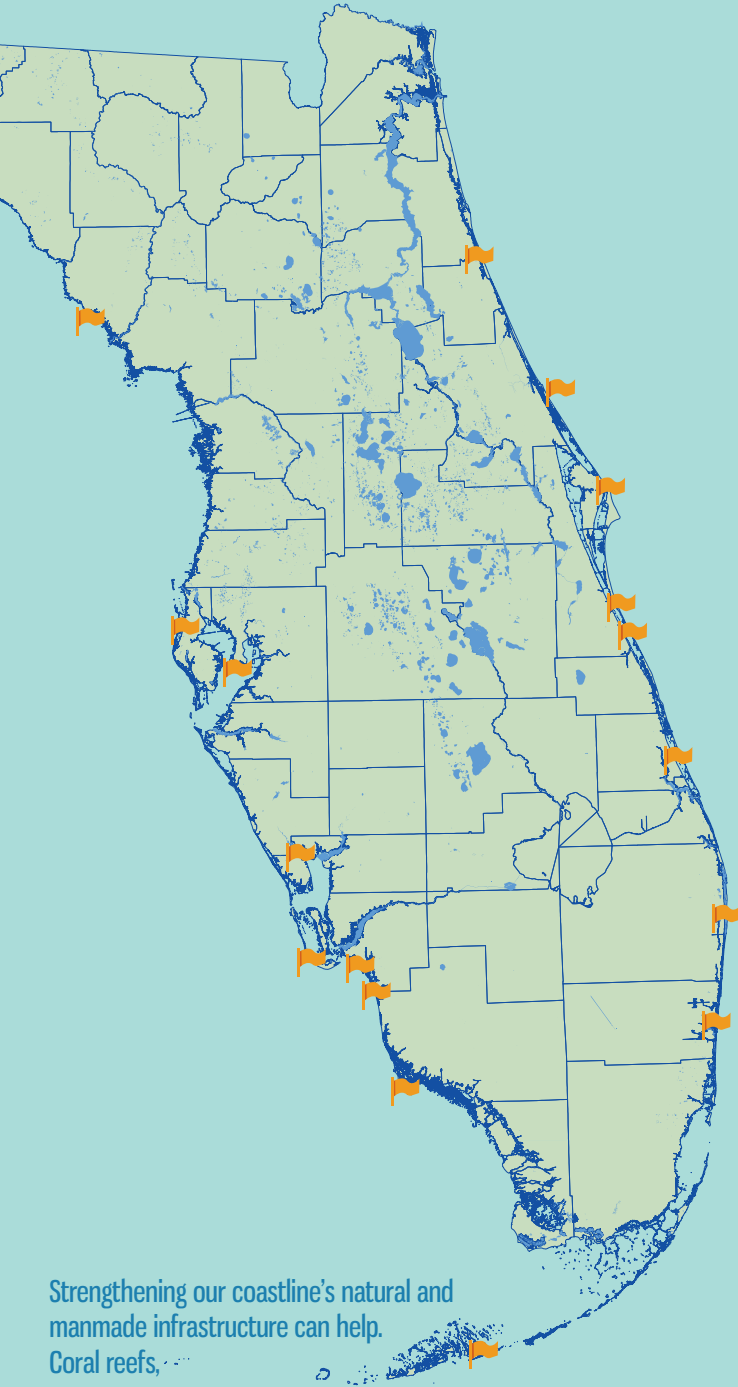


 =site of resilience-building project



Strengthening our coastline's natural and manmade infrastructure can help. Coral reefs, mangroves, oyster reefs and marshes are our first lines of defense.

Funding for all highlighted projects was provided by DEP in partnership with NOAA and the Florida Coastal Management Program.

## OUR VISION

Florida's coastal communities are resilient and prepared for the effects of rising sea levels, including coastal flooding, erosion, and ecosystem changes.

The Florida Department of Environmental Protection's Florida Coastal Office is committed to marshalling resources to prepare Florida's communities and habitats for changes resulting from sea level rise. Our history of protecting, preserving, and restoring habitats has set the stage for this continuing effort.

For more information about past and current projects, funding opportunities, technical assistance and speaker availability contact:

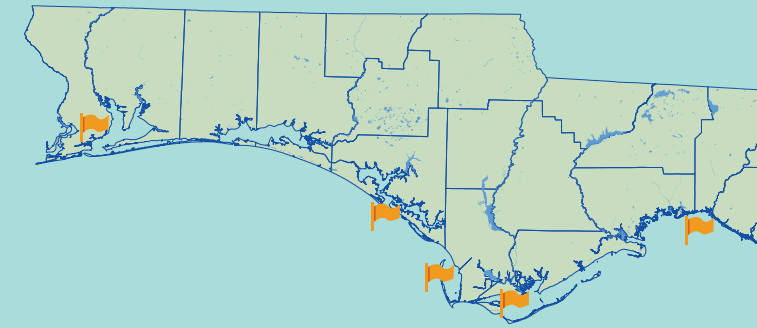
Florida Coastal Office  
FloridaCoasts@FloridaDEP.gov  
(850)245-2094  
3900 Commonwealth Blvd. MS 235  
Tallahassee, FL 32399-3000



# Florida Resilient Coastlines Program



Synergizing community resilience planning and natural resource protection tools and funding to prepare Florida's coastline for the effects of climate change, especially rising sea levels.

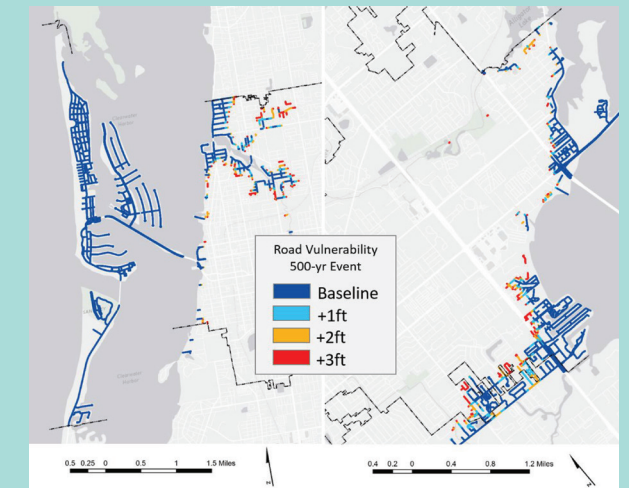


## PROJECT HIGHLIGHT INFORMATION

The Cities of Clearwater and St. Augustine and Escambia County were chosen as pilot communities to assess vulnerabilities to projected increases in coastal flooding and develop strategies to make affected areas more resilient. They received assistance from the Community Resiliency Initiative (CRI), a partnership between DEP and the Department of Economic Opportunity, with funding from NOAA and the Florida Coastal Management Program.

A guidebook for adaptation planning in Florida will be the next product from the CRI, available summer 2018.

Sea level rise is affecting Florida communities, especially along the coast. DEP is committed to continuing our efforts to help ensure collaboration among our coastal communities to help them address the increasingly complex effects of sea level rise, including tidal "sunny day" flooding, habitat shifts, and erosion.



Part of Clearwater's vulnerability assessment was to identify roads likely to flood during various rain events combined with sea level rise.

# FLORIDA RESILIENT COASTLINES PROGRAM



Illustration by Dawn Witherington

DEP is committed to continued collaboration with federal, state and local agencies to ensure Florida's coastal communities are resilient and prepared for the effects of climate change, especially rising sea levels.

Florida Resource	1 Watershed	2 Water Supply	3 Underground Tanks	4 Aquatic Vegetation	5 Shoreline	6 Marinas	7 Cultural	8 Coastal Infrastructure	9 Beaches	10 Coral Reefs	11 Fisheries	12 Ocean Energy Resources
Issues/Threats	Saltwater Intrusion; Stormwater Runoff	Reduced Water Quantity	Inundation & Leaking	Scarring & Health	Loss of Habitat and/or Infrastructure from Erosion	Reduced Water Quality from Runoff, Inundation/Leaking Tanks	Intrinsic Value	Tidal Flooding, Storm Surge	Erosion	Disease, Bleaching, Damage	Habitat Loss	Impacts to Natural Resources
Benefits of Resilience	Maintain or Improve Water Quality	Community & Natural Area Water Needs	Pollution Prevention	Protection of Fisheries; Wave Attenuation	Maintain Habitat & Infrastructure; Use of Habitat for Flood Mitigation; Wave/Wind Attenuation	Faster Rebound from Flooding/ Storms	Protection of Tourism Assets & Heritage	Protection of Infrastructure & Tourism Assets	Protection of Tourism Assets & Habitats; Wave Attenuation	Protection of Tourism Assets & Habitats; Wave Attenuation	Protection of Economically Important Species	Protection of Tourism Assets & Habitats

- Synergizing community resilience planning and natural resource protection tools.
- Providing funding and technical assistance to prepare Florida's coastal communities for sea level rise.
- Continuing to promote and ensure a coordinated approach to sea level rise planning among state, regional and local agencies.