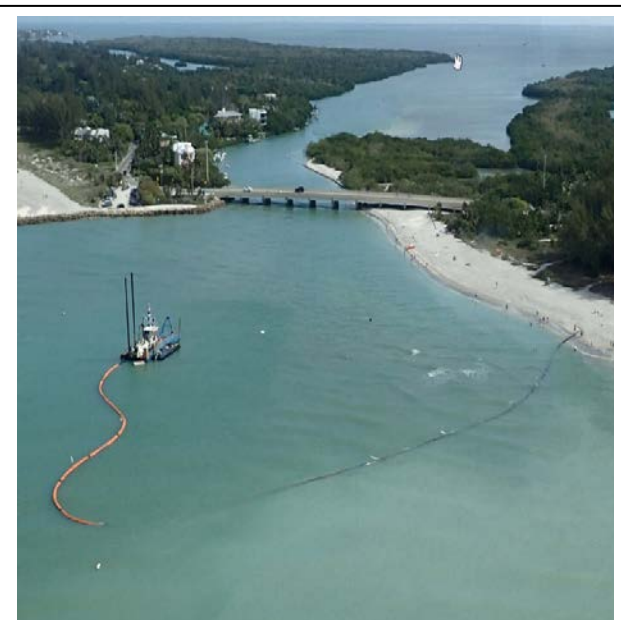


# Florida Beach Management Program

## Long Range Budget Plan for 2018– 2028



*Construction of the 2017 Sunny Isles - Dade County Shore Protection Project.  
Photo courtesy of the U.S. Army Corps of Engineers.*



*Construction of the 2017 Blind Pass Beach Nourishment.  
Photo courtesy of DEP.*

The Beach and Shore Preservation Act [Section 161.091, Florida Statutes (F.S.)] charges the Florida Department of Environmental Protection (DEP) with developing and implementing a comprehensive, long-range statewide beach management plan. In fulfilling that responsibility, DEP has developed, in coordination with local sponsors and the U.S. Army Corps of Engineers (Corps), a Strategic Beach Management Plan (Strategic Plan), Long Range Budget Plan (Budget Plan) and prioritized list of specific beach erosion control projects for FY 2018-19, called the Local Government Funding Request (LGFR).

DEP developed the Strategic Plan to meet the intent of Section 161.091(2), F.S., to recommend actions that address the critically eroded shoreline on the Atlantic Ocean, Gulf of Mexico and Straits of Florida. The Strategic Plan divides the state into regions and sub-regions based upon geology and sand movement in order to promote regional solutions and cost effectiveness. Local governments may choose to become project sponsors and request state cost-sharing to implement projects consistent with the Strategic Plan.







The Budget Plan projects the 10-year planning needs for federal, state and local governments necessary to implement the Strategic Plan. The information contained within is based primarily upon formal projections for funding furnished to DEP from local sponsors. Federal costs have been estimated for planning purposes and are not verified by the Corps. The Budget Plan is divided into the same regions as the Strategic Plan. A map of the regions is presented on Page 2. A summary table of the projects by region is presented in the "Regional Summaries" section. The individual projects follow in their respective regional groupings, beginning with the Northeast Atlantic Coast and ending with the Panhandle Coast.

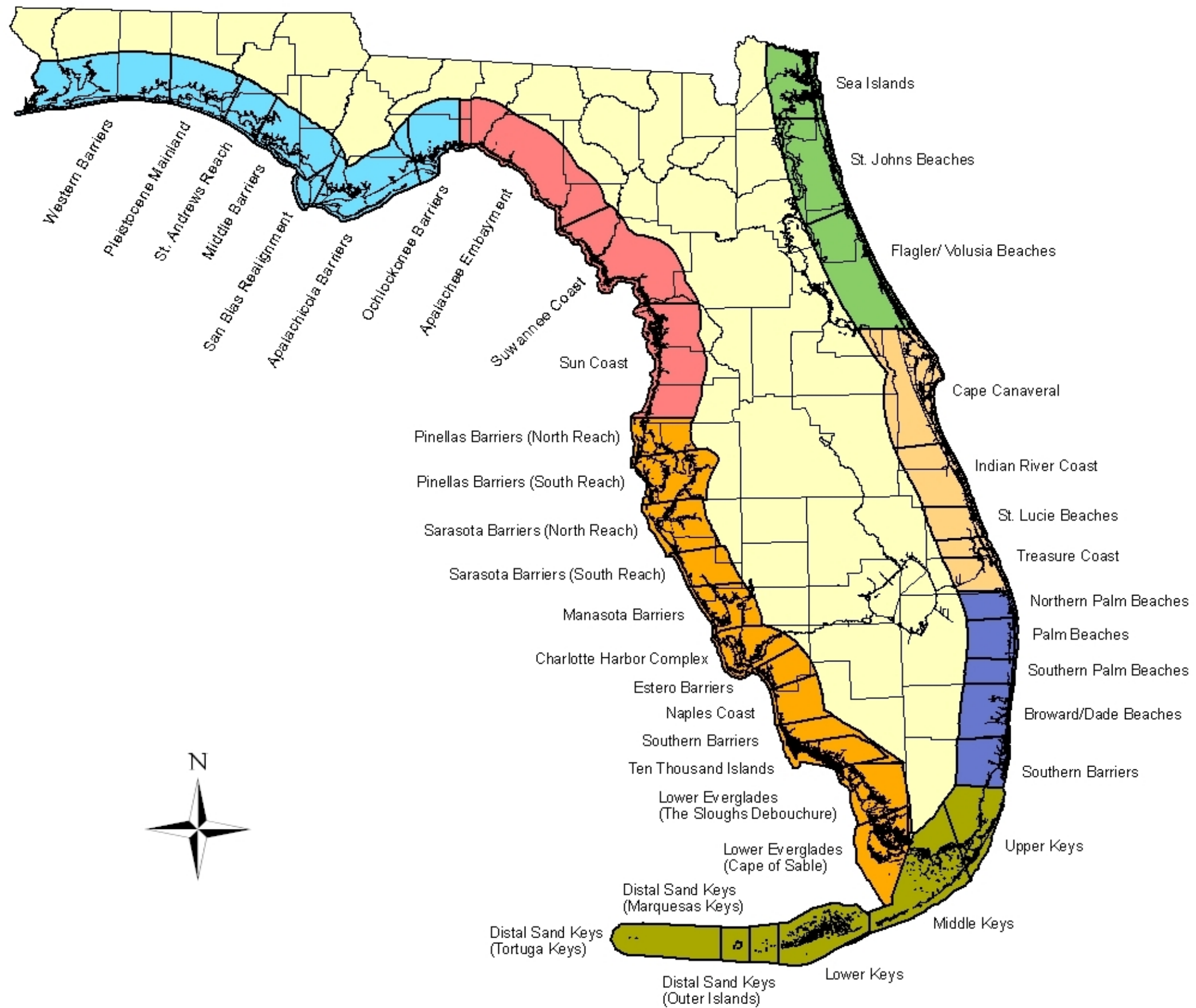
The first year of the Budget Plan summarizes DEPs LGFR submitted to the Florida Legislature for funding consideration in FY 2018-19. The first five years of each budget projects the estimated costs of the planned phase. Years 6 through 10 indicate the anticipated project phase only, as project costs are difficult to estimate more than five years in advance. Funding estimates for FY 2019-20 and beyond are subject to revision by the local sponsor and revalidation by DEP to reflect changes in project scope, cost estimates, project eligibility and availability of state, local and federal funds. Beach management projects require time to plan, design, finance, construct, monitor and maintain. The Budget Plan provides a statewide view of the many individual project efforts. It is used to encourage cooperation and coordination among the local, state and federal entities and organizations involved in managing Florida beaches.

**Division of Water Restoration Assistance**

# Statewide Regions and Sub-Regions

## REGIONS

-  Northeast Atlantic Coast
-  Central Atlantic Coast
-  Southeast Atlantic Coast
-  Florida Keys
-  Southwest Gulf Coast
-  Big Bend Gulf Coast
-  Panhandle Gulf Coast



FLORIDA DEPARTMENT OF ENVIRONMENTAL PROTECTION  
 Division of Water Restoration Assistance  
 FY 2018-2028 Long Range Budget Plan

Regional Summaries (in thousands of dollars)

<b>Northeast Atlantic Coast</b>																
Project	Federal FY 18/19	State FY 18/19	Local FY 18/19	Federal FY 19/20	State FY 19/20	Local FY 19/20	Federal FY 20/21	State FY 20/21	Local FY 20/21	Federal FY 21/22	State FY 21/22	Local FY 21/22	Federal FY 22/23	State FY 22/23	Local FY 22/23	TOTAL
Feasibility	0.0	200.0	200.0	0.0	0.0	0.0	0.0	0.0	0.0	0.0	0.0	0.0	0.0	0.0	0.0	400.0
Design	310.9	245.3	921.8	0.0	150.0	50.0	0.0	0.0	0.0	0.0	15.9	18.1	0.0	0.0	0.0	1,712.0
Construction	12,063.9	2,729.5	3,091.5	5,131.8	8,868.4	12,444.8	0.0	1,875.0	625.0	0.0	22.2	32.8	9,240.0	2,715.0	3,080.0	61,919.9
Monitoring	0.0	4.1	6.2	79.1	239.6	316.4	79.1	106.1	134.9	0.0	267.2	251.6	0.0	111.8	149.0	1,745.1
<b>Subtotal</b>	<b>12,374.8</b>	<b>3,178.9</b>	<b>4,219.5</b>	<b>5,210.9</b>	<b>9,258.0</b>	<b>12,811.2</b>	<b>79.1</b>	<b>1,981.1</b>	<b>759.9</b>	<b>0.0</b>	<b>305.3</b>	<b>302.5</b>	<b>9,240.0</b>	<b>2,826.8</b>	<b>3,229.0</b>	<b>65,777.0</b>
<b>Central Atlantic Coast</b>																
Project	Federal FY 18/19	State FY 18/19	Local FY 18/19	Federal FY 19/20	State FY 19/20	Local FY 19/20	Federal FY 20/21	State FY 20/21	Local FY 20/21	Federal FY 21/22	State FY 21/22	Local FY 21/22	Federal FY 22/23	State FY 22/23	Local FY 22/23	TOTAL
Feasibility	0.0	87.5	87.5	0.0	0.0	0.0	0.0	0.0	0.0	0.0	0.0	0.0	0.0	100.0	100.0	375.0
Design	0.0	355.3	435.8	0.0	90.0	30.0	0.0	150.0	150.0	0.0	325.0	225.0	200.0	234.5	11.5	2,207.1
Construction	24,036.4	14,407.6	9,529.8	23,535.6	3,755.1	9,349.4	4,862.0	13,906.5	6,681.5	15,552.0	3,659.0	3,369.0	0.0	249.2	110.8	133,003.9
Monitoring	0.0	506.5	413.5	0.0	1,576.1	1,447.9	0.0	1,481.5	1,561.0	0.0	1,472.6	1,392.4	337.5	1,067.3	767.2	12,023.5
<b>Subtotal</b>	<b>24,036.4</b>	<b>15,356.9</b>	<b>10,466.6</b>	<b>23,535.6</b>	<b>5,421.2</b>	<b>10,827.3</b>	<b>4,862.0</b>	<b>15,538.0</b>	<b>8,392.5</b>	<b>15,552.0</b>	<b>5,456.6</b>	<b>4,986.4</b>	<b>537.5</b>	<b>1,651.0</b>	<b>989.5</b>	<b>147,609.5</b>
<b>Southeast Atlantic Coast</b>																
Project	Federal FY 18/19	State FY 18/19	Local FY 18/19	Federal FY 19/20	State FY 19/20	Local FY 19/20	Federal FY 20/21	State FY 20/21	Local FY 20/21	Federal FY 21/22	State FY 21/22	Local FY 21/22	Federal FY 22/23	State FY 22/23	Local FY 22/23	TOTAL
Feasibility	0.0	333.6	335.3	0.0	0.0	0.0	0.0	0.0	0.0	0.0	0.0	0.0	0.0	0.0	0.0	668.9
Design	1,068.4	769.8	818.5	450.2	224.9	224.8	94.7	114.1	146.2	69.0	96.0	110.0	115.1	59.4	65.5	4,426.6
Construction	5,770.1	32,508.8	34,938.3	14,072.3	10,197.4	10,748.6	6,448.7	8,637.1	9,413.5	19,599.0	22,128.0	22,941.5	0.0	4,989.5	7,624.4	210,017.2
Monitoring	313.6	528.5	372.1	927.3	1,353.0	1,205.5	779.9	1,314.9	1,082.5	783.6	1,586.9	1,428.2	301.4	1,463.6	1,133.5	14,574.4
<b>Subtotal</b>	<b>7,152.1</b>	<b>34,140.7</b>	<b>36,464.2</b>	<b>15,449.8</b>	<b>11,775.3</b>	<b>12,178.9</b>	<b>7,323.3</b>	<b>10,066.1</b>	<b>10,642.2</b>	<b>20,451.6</b>	<b>23,810.9</b>	<b>24,479.7</b>	<b>416.5</b>	<b>6,512.5</b>	<b>8,823.4</b>	<b>229,687.1</b>
<b>Florida Keys</b>																
Project	Federal FY 18/19	State FY 18/19	Local FY 18/19	Federal FY 19/20	State FY 19/20	Local FY 19/20	Federal FY 20/21	State FY 20/21	Local FY 20/21	Federal FY 21/22	State FY 21/22	Local FY 21/22	Federal FY 22/23	State FY 22/23	Local FY 22/23	TOTAL
Feasibility	0.0	0.0	0.0	0.0	0.0	0.0	0.0	0.0	0.0	0.0	0.0	0.0	0.0	0.0	0.0	0.0
Design	0.0	0.0	0.0	0.0	0.0	0.0	0.0	0.0	0.0	0.0	0.0	0.0	0.0	0.0	0.0	0.0
Construction	0.0	0.0	0.0	0.0	5.0	5.0	0.0	355.0	355.0	0.0	5.0	5.0	0.0	5.0	5.0	740.0
Monitoring	0.0	0.0	0.0	0.0	37.7	37.7	0.0	37.7	37.7	0.0	137.7	137.7	0.0	25.2	25.2	476.6
<b>Subtotal</b>	<b>0.0</b>	<b>0.0</b>	<b>0.0</b>	<b>0.0</b>	<b>42.7</b>	<b>42.7</b>	<b>0.0</b>	<b>392.7</b>	<b>392.7</b>	<b>0.0</b>	<b>142.7</b>	<b>142.7</b>	<b>0.0</b>	<b>30.2</b>	<b>30.2</b>	<b>1,216.6</b>
<b>Southwest Gulf Coast</b>																
Project	Federal FY 18/19	State FY 18/19	Local FY 18/19	Federal FY 19/20	State FY 19/20	Local FY 19/20	Federal FY 20/21	State FY 20/21	Local FY 20/21	Federal FY 21/22	State FY 21/22	Local FY 21/22	Federal FY 22/23	State FY 22/23	Local FY 22/23	TOTAL
Feasibility	0.0	233.5	127.8	0.0	42.1	14.0	0.0	0.0	0.0	0.0	0.0	0.0	0.0	0.0	0.0	417.4
Design	0.0	297.5	272.5	0.0	653.0	907.7	461.5	499.0	563.5	461.5	258.0	232.5	310.0	95.0	95.0	5,106.7
Construction	0.0	1,331.3	443.7	1,040.5	33,069.6	49,699.9	0.0	8,343.2	19,319.8	14,513.7	14,391.6	30,795.7	0.0	295.5	133.3	173,377.8
Monitoring	0.0	82.6	117.4	63.5	916.1	1,228.0	55.9	1,348.3	1,742.4	67.1	1,058.5	1,522.2	68.9	968.6	1,363.6	10,603.1
<b>Subtotal</b>	<b>0.0</b>	<b>1,944.9</b>	<b>961.4</b>	<b>1,104.0</b>	<b>34,680.8</b>	<b>51,849.6</b>	<b>517.4</b>	<b>10,190.5</b>	<b>21,625.7</b>	<b>15,042.3</b>	<b>15,708.1</b>	<b>32,550.4</b>	<b>378.9</b>	<b>1,359.1</b>	<b>1,591.9</b>	<b>189,505.0</b>
<b>Panhandle Gulf Coast</b>																
Project	Federal FY 18/19	State FY 18/19	Local FY 18/19	Federal FY 19/20	State FY 19/20	Local FY 19/20	Federal FY 20/21	State FY 20/21	Local FY 20/21	Federal FY 21/22	State FY 21/22	Local FY 21/22	Federal FY 22/23	State FY 22/23	Local FY 22/23	TOTAL
Feasibility	0.0	413.1	158.4	0.0	0.0	0.0	0.0	0.0	0.0	0.0	0.0	0.0	0.0	0.0	0.0	571.5
Design	0.0	113.1	185.2	0.0	71.6	88.4	0.0	71.6	88.4	0.0	171.6	188.4	0.0	0.0	0.0	978.3
Construction	0.0	949.3	1,566.0	1,000.0	2,552.2	3,787.8	22,400.0	6,754.1	11,095.9	0.0	111.9	138.1	0.0	0.0	0.0	50,355.3
Monitoring	0.0	401.2	594.8	84.0	321.4	561.8	84.0	402.2	698.8	84.0	419.6	752.6	0.0	347.3	628.2	5,379.9
<b>Subtotal</b>	<b>0.0</b>	<b>1,876.7</b>	<b>2,504.4</b>	<b>1,084.0</b>	<b>2,945.2</b>	<b>4,438.0</b>	<b>22,484.0</b>	<b>7,227.9</b>	<b>11,883.1</b>	<b>84.0</b>	<b>703.1</b>	<b>1,079.1</b>	<b>0.0</b>	<b>347.3</b>	<b>628.2</b>	<b>57,285.0</b>
<b>Statewide Projects</b>																
Project	Federal FY 18/19	State FY 18/19	Local FY 18/19	Federal FY 19/20	State FY 19/20	Local FY 19/20	Federal FY 20/21	State FY 20/21	Local FY 20/21	Federal FY 21/22	State FY 21/22	Local FY 21/22	Federal FY 22/23	State FY 22/23	Local FY 22/23	TOTAL
Feasibility	0.0	0.0	0.0	0.0	250.0	0.0	0.0	0.0	0.0	0.0	250.0	0.0	0.0	0.0	0.0	500.0
Design	0.0	0.0	0.0	0.0	0.0	0.0	0.0	0.0	0.0	0.0	0.0	0.0	0.0	0.0	0.0	0.0
Construction	0.0	0.0	0.0	0.0	0.0	0.0	0.0	0.0	0.0	0.0	0.0	0.0	0.0	0.0	0.0	0.0
Monitoring	0.0	250.0	0.0	0.0	0.0	0.0	0.0	250.0	0.0	0.0	0.0	0.0	0.0	250.0	0.0	750.0
<b>Subtotal</b>	<b>0.0</b>	<b>250.0</b>	<b>0.0</b>	<b>0.0</b>	<b>250.0</b>	<b>0.0</b>	<b>0.0</b>	<b>250.0</b>	<b>0.0</b>	<b>0.0</b>	<b>250.0</b>	<b>0.0</b>	<b>0.0</b>	<b>250.0</b>	<b>0.0</b>	<b>1,250.0</b>
<b>TOTAL</b>	<b>43,563.3</b>	<b>56,748.1</b>	<b>54,616.1</b>	<b>46,384.3</b>	<b>64,373.2</b>	<b>92,147.7</b>	<b>35,265.8</b>	<b>45,646.3</b>	<b>53,696.0</b>	<b>51,129.9</b>	<b>46,376.6</b>	<b>63,540.8</b>	<b>10,572.9</b>	<b>12,976.9</b>	<b>15,292.2</b>	<b>692,330.2</b>
FY TOTAL (Federal, State, Local)			<b>154,927.5</b>			<b>202,905.2</b>			<b>134,608.1</b>			<b>161,047.3</b>			<b>38,842.0</b>	<b>692,330.2</b>



FLORIDA DEPARTMENT OF ENVIRONMENTAL PROTECTION  
 Division of Water Restoration Assistance  
 FY 2018-2028 Long Range Budget Plan

Northeast Atlantic Coast (in thousands of dollars)

<b>Sea Islands - St. Marys River to Duval/St. Johns County Line</b>																					
DEP, Division of Recreation and Parks																					
Fort Clinch Inlet Sand Management (R1-R9) - No information available.																					
Project	Federal FY 18/19	State FY 18/19	Local FY 18/19	Federal FY 19/20	State FY 19/20	Local FY 19/20	Federal FY 20/21	State FY 20/21	Local FY 20/21	Federal FY 21/22	State FY 21/22	Local FY 21/22	Federal FY 22/23	State FY 22/23	Local FY 22/23	TOTAL	FY 23/24	FY 24/25	FY 25/26	FY 26/27	FY 27/28
Feasibility	0.0	0.0	0.0	0.0	0.0	0.0	0.0	0.0	0.0	0.0	0.0	0.0	0.0	0.0	0.0	0.0					
Design	0.0	0.0	0.0	0.0	0.0	0.0	0.0	0.0	0.0	0.0	0.0	0.0	0.0	0.0	0.0	0.0					
Construction	0.0	0.0	0.0	0.0	0.0	0.0	0.0	0.0	0.0	0.0	0.0	0.0	0.0	0.0	0.0	0.0					
Monitoring	0.0	0.0	0.0	0.0	0.0	0.0	0.0	0.0	0.0	0.0	0.0	0.0	0.0	0.0	0.0	0.0					
<b>Subtotal</b>	<b>0.0</b>	<b>0.0</b>	<b>0.0</b>	<b>0.0</b>	<b>0.0</b>	<b>0.0</b>	<b>0.0</b>	<b>0.0</b>	<b>0.0</b>	<b>0.0</b>	<b>0.0</b>	<b>0.0</b>	<b>0.0</b>	<b>0.0</b>	<b>0.0</b>	<b>0.0</b>					
<b>City of Fernandina Beach</b>																					
<b>Nassau County Shore Protection Project (R11-R34)</b>																					
Project	Federal FY 18/19	State FY 18/19	Local FY 18/19	Federal FY 19/20	State FY 19/20	Local FY 19/20	Federal FY 20/21	State FY 20/21	Local FY 20/21	Federal FY 21/22	State FY 21/22	Local FY 21/22	Federal FY 22/23	State FY 22/23	Local FY 22/23	TOTAL	FY 23/24	FY 24/25	FY 25/26	FY 26/27	FY 27/28
Feasibility	0.0	0.0	0.0	0.0	0.0	0.0	0.0	0.0	0.0	0.0	0.0	0.0	0.0	0.0	0.0	0.0					
Design	0.0	0.0	0.0	0.0	0.0	0.0	0.0	0.0	0.0	0.0	0.0	0.0	0.0	0.0	0.0	0.0					
Construction	0.0	0.0	0.0	0.0	0.0	0.0	0.0	0.0	0.0	0.0	0.0	0.0	0.0	0.0	0.0	0.0					
Monitoring	0.0	0.0	0.0	79.1	39.9	46.0	79.1	19.0	22.0	0.0	0.0	0.0	0.0	0.0	0.0	0.0					
<b>Subtotal</b>	<b>0.0</b>	<b>0.0</b>	<b>0.0</b>	<b>79.1</b>	<b>39.9</b>	<b>46.0</b>	<b>79.1</b>	<b>19.0</b>	<b>22.0</b>	<b>0.0</b>	<b>0.0</b>	<b>0.0</b>	<b>0.0</b>	<b>0.0</b>	<b>0.0</b>	<b>0.0</b>					
<b>Nassau County</b>																					
<b>South Amelia Island Beach Nourishment (R60-R79)</b>																					
Project	Federal FY 18/19	State FY 18/19	Local FY 18/19	Federal FY 19/20	State FY 19/20	Local FY 19/20	Federal FY 20/21	State FY 20/21	Local FY 20/21	Federal FY 21/22	State FY 21/22	Local FY 21/22	Federal FY 22/23	State FY 22/23	Local FY 22/23	TOTAL	FY 23/24	FY 24/25	FY 25/26	FY 26/27	FY 27/28
Feasibility	0.0	0.0	0.0	0.0	0.0	0.0	0.0	0.0	0.0	0.0	0.0	0.0	0.0	0.0	0.0	0.0					
Design	33.9	97.3	143.8	0.0	0.0	0.0	0.0	0.0	0.0	0.0	0.0	0.0	0.0	0.0	0.0	275.0					
Construction	0.0	0.0	0.0	0.0	7,486.8	11,063.2	0.0	0.0	0.0	0.0	22.2	32.8	0.0	14.1	20.9	18,640.0					
Monitoring	0.0	4.1	6.2	0.0	72.7	112.4	0.0	0.0	0.0	0.0	64.1	94.7	0.0	64.9	95.9	515.0					
<b>Subtotal</b>	<b>33.9</b>	<b>101.4</b>	<b>150.0</b>	<b>0.0</b>	<b>7,559.5</b>	<b>11,175.6</b>	<b>0.0</b>	<b>0.0</b>	<b>0.0</b>	<b>0.0</b>	<b>86.3</b>	<b>127.5</b>	<b>0.0</b>	<b>79.0</b>	<b>116.8</b>	<b>19,430.0</b>					
<b>City of Jacksonville</b>																					
<b>Duval County Shore Protection Project (R31-R80)</b>																					
Project	Federal FY 18/19	State FY 18/19	Local FY 18/19	Federal FY 19/20	State FY 19/20	Local FY 19/20	Federal FY 20/21	State FY 20/21	Local FY 20/21	Federal FY 21/22	State FY 21/22	Local FY 21/22	Federal FY 22/23	State FY 22/23	Local FY 22/23	TOTAL	FY 23/24	FY 24/25	FY 25/26	FY 26/27	FY 27/28
Feasibility	0.0	0.0	0.0	0.0	0.0	0.0	0.0	0.0	0.0	0.0	0.0	0.0	0.0	0.0	0.0	0.0					
Design	0.0	0.0	0.0	0.0	0.0	0.0	0.0	0.0	0.0	0.0	15.9	18.1	0.0	0.0	0.0	34.0					
Construction	12,063.9	2,729.5	3,091.5	0.0	0.0	0.0	0.0	0.0	0.0	0.0	0.0	0.0	9,240.0	2,700.9	3,059.1	32,884.9					
Monitoring	0.0	0.0	0.0	0.0	39.9	45.1	0.0	0.0	0.0	0.0	28.1	31.9	0.0	46.9	53.1	245.0					
<b>Subtotal</b>	<b>12,063.9</b>	<b>2,729.5</b>	<b>3,091.5</b>	<b>0.0</b>	<b>39.9</b>	<b>45.1</b>	<b>0.0</b>	<b>0.0</b>	<b>0.0</b>	<b>0.0</b>	<b>44.0</b>	<b>50.0</b>	<b>9,240.0</b>	<b>2,747.8</b>	<b>3,112.2</b>	<b>33,163.9</b>					
<b>St. Johns Beaches - Duval/St. Johns County Line to Flagler County R15</b>																					
<b>St. Johns County</b>																					
<b>South Ponte Vedra/Vilano Beach Federal Design (R84-R94, R109-R117, R197-R209)</b>																					
Project	Federal FY 18/19	State FY 18/19	Local FY 18/19	Federal FY 19/20	State FY 19/20	Local FY 19/20	Federal FY 20/21	State FY 20/21	Local FY 20/21	Federal FY 21/22	State FY 21/22	Local FY 21/22	Federal FY 22/23	State FY 22/23	Local FY 22/23	TOTAL	FY 23/24	FY 24/25	FY 25/26	FY 26/27	FY 27/28
Feasibility	0.0	0.0	0.0	0.0	0.0	0.0	0.0	0.0	0.0	0.0	0.0	0.0	0.0	0.0	0.0	0.0					
Design	277.0	148.0	778.0	0.0	0.0	0.0	0.0	0.0	0.0	0.0	0.0	0.0	0.0	0.0	0.0	1,203.0					
Construction	0.0	0.0	0.0	0.0	0.0	0.0	0.0	0.0	0.0	0.0	0.0	0.0	0.0	0.0	0.0	0.0					
Monitoring	0.0	0.0	0.0	0.0	0.0	0.0	0.0	0.0	0.0	0.0	0.0	0.0	0.0	0.0	0.0	0.0					
<b>Subtotal</b>	<b>277.0</b>	<b>148.0</b>	<b>778.0</b>	<b>0.0</b>	<b>0.0</b>	<b>0.0</b>	<b>0.0</b>	<b>0.0</b>	<b>0.0</b>	<b>0.0</b>	<b>0.0</b>	<b>0.0</b>	<b>0.0</b>	<b>0.0</b>	<b>0.0</b>	<b>1,203.0</b>					
<b>St. Johns County</b>																					
<b>St. Augustine IMP Implementation</b>																					
Project	Federal FY 18/19	State FY 18/19	Local FY 18/19	Federal FY 19/20	State FY 19/20	Local FY 19/20	Federal FY 20/21	State FY 20/21	Local FY 20/21	Federal FY 21/22	State FY 21/22	Local FY 21/22	Federal FY 22/23	State FY 22/23	Local FY 22/23	TOTAL	FY 23/24	FY 24/25	FY 25/26	FY 26/27	FY 27/28
Feasibility	0.0	0.0	0.0	0.0	0.0	0.0	0.0	0.0	0.0	0.0	0.0	0.0	0.0	0.0	0.0	0.0					
Design	0.0	0.0	0.0	0.0	0.0	0.0	0.0	0.0	0.0	0.0	0.0	0.0	0.0	0.0	0.0	0.0					
Construction	0.0	0.0	0.0	6,000.0	1,000.0	1,000.0	0.0	0.0	0.0	0.0	0.0	0.0	0.0	0.0	0.0	8,000.0					
Monitoring	0.0	0.0	0.0	0.0	0.0	0.0	0.0	50.0	50.0	0.0	50.0	50.0	0.0	0.0	0.0	200.0					
<b>Subtotal</b>	<b>0.0</b>	<b>0.0</b>	<b>0.0</b>	<b>6,000.0</b>	<b>1,000.0</b>	<b>1,000.0</b>	<b>0.0</b>	<b>50.0</b>	<b>50.0</b>	<b>0.0</b>	<b>50.0</b>	<b>50.0</b>	<b>0.0</b>	<b>0.0</b>	<b>0.0</b>	<b>8,200.0</b>					

FLORIDA DEPARTMENT OF ENVIRONMENTAL PROTECTION  
 Division of Water Restoration Assistance  
 FY 2018-2028 Long Range Budget Plan

Northeast Atlantic Coast (in thousands of dollars)

St. Johns County																						
St. Johns County Shore Protection Project (R137-R151)																						
Project	Federal FY 18/19	State FY 18/19	Local FY 18/19	Federal FY 19/20	State FY 19/20	Local FY 19/20	Federal FY 20/21	State FY 20/21	Local FY 20/21	Federal FY 21/22	State FY 21/22	Local FY 21/22	Federal FY 22/23	State FY 22/23	Local FY 22/23	TOTAL	FY 23/24	FY 24/25	FY 25/26	FY 26/27	FY 27/28	
Feasibility	0.0	0.0	0.0	0.0	0.0	0.0	0.0	0.0	0.0	0.0	0.0	0.0	0.0	0.0	0.0	0.0	0.0					
Design	0.0	0.0	0.0	0.0	0.0	0.0	0.0	0.0	0.0	0.0	0.0	0.0	0.0	0.0	0.0	0.0	0.0					
Construction	0.0	0.0	0.0	0.0	0.0	0.0	0.0	0.0	0.0	0.0	0.0	0.0	0.0	0.0	0.0	0.0	0.0					
Monitoring	0.0	0.0	0.0	0.0	87.1	112.9	0.0	87.1	112.9	0.0	0.0	0.0	0.0	0.0	0.0	0.0	400.0	M	M	M		
<b>Subtotal</b>	<b>0.0</b>	<b>0.0</b>	<b>0.0</b>	<b>0.0</b>	<b>87.1</b>	<b>112.9</b>	<b>0.0</b>	<b>87.1</b>	<b>112.9</b>	<b>0.0</b>	<b>0.0</b>	<b>0.0</b>	<b>0.0</b>	<b>0.0</b>	<b>0.0</b>	<b>0.0</b>	<b>400.0</b>					
Flagler/ Volusia Beaches - Flagler County R15 to Volusia/Brevard County Line																						
Flagler County																						
Flagler County Beach Restoration (R1-R101)																						
Project	Federal FY 18/19	State FY 18/19	Local FY 18/19	Federal FY 19/20	State FY 19/20	Local FY 19/20	Federal FY 20/21	State FY 20/21	Local FY 20/21	Federal FY 21/22	State FY 21/22	Local FY 21/22	Federal FY 22/23	State FY 22/23	Local FY 22/23	TOTAL	FY 23/24	FY 24/25	FY 25/26	FY 26/27	FY 27/28	
Feasibility	0.0	0.0	0.0	0.0	0.0	0.0	0.0	0.0	0.0	0.0	0.0	0.0	0.0	0.0	0.0	0.0	0.0					
Design	0.0	0.0	0.0	0.0	0.0	0.0	0.0	0.0	0.0	0.0	0.0	0.0	0.0	0.0	0.0	0.0	0.0					
Construction	0.0	0.0	0.0	5,131.8	1,381.6	1,381.6	0.0	0.0	0.0	0.0	0.0	0.0	0.0	0.0	0.0	7,895.0						
Monitoring	0.0	0.0	0.0	0.0	0.0	0.0	0.0	0.0	0.0	0.0	100.0	100.0	0.0	0.0	0.0	200.0			M		M	
<b>Subtotal</b>	<b>0.0</b>	<b>0.0</b>	<b>0.0</b>	<b>5,131.8</b>	<b>1,381.6</b>	<b>1,381.6</b>	<b>0.0</b>	<b>0.0</b>	<b>0.0</b>	<b>0.0</b>	<b>100.0</b>	<b>100.0</b>	<b>0.0</b>	<b>0.0</b>	<b>0.0</b>	<b>8,095.0</b>						
Volusia County																						
Volusia County Feasibility Study (R1-R148, R150-T208)																						
Project	Federal FY 18/19	State FY 18/19	Local FY 18/19	Federal FY 19/20	State FY 19/20	Local FY 19/20	Federal FY 20/21	State FY 20/21	Local FY 20/21	Federal FY 21/22	State FY 21/22	Local FY 21/22	Federal FY 22/23	State FY 22/23	Local FY 22/23	TOTAL	FY 23/24	FY 24/25	FY 25/26	FY 26/27	FY 27/28	
Feasibility	0.0	0.0	0.0	0.0	0.0	0.0	0.0	0.0	0.0	0.0	0.0	0.0	0.0	0.0	0.0	0.0	0.0					
Design	0.0	200.0	200.0	0.0	0.0	0.0	0.0	0.0	0.0	0.0	0.0	0.0	0.0	0.0	0.0	400.0						
Construction	0.0	0.0	0.0	0.0	0.0	0.0	0.0	0.0	0.0	0.0	0.0	0.0	0.0	0.0	0.0	0.0	0.0	C				
Monitoring	0.0	0.0	0.0	0.0	0.0	0.0	0.0	0.0	0.0	0.0	0.0	0.0	0.0	0.0	0.0	0.0	0.0		M	M	M	
<b>Subtotal</b>	<b>0.0</b>	<b>200.0</b>	<b>200.0</b>	<b>0.0</b>	<b>0.0</b>	<b>0.0</b>	<b>0.0</b>	<b>0.0</b>	<b>0.0</b>	<b>0.0</b>	<b>0.0</b>	<b>0.0</b>	<b>0.0</b>	<b>0.0</b>	<b>0.0</b>	<b>400.0</b>						
Volusia County																						
Ponce de Leon IMP Implementation (R130-R165)																						
Project	Federal FY 18/19	State FY 18/19	Local FY 18/19	Federal FY 19/20	State FY 19/20	Local FY 19/20	Federal FY 20/21	State FY 20/21	Local FY 20/21	Federal FY 21/22	State FY 21/22	Local FY 21/22	Federal FY 22/23	State FY 22/23	Local FY 22/23	TOTAL	FY 23/24	FY 24/25	FY 25/26	FY 26/27	FY 27/28	
Feasibility	0.0	0.0	0.0	0.0	0.0	0.0	0.0	0.0	0.0	0.0	0.0	0.0	0.0	0.0	0.0	0.0	0.0					
Design	0.0	0.0	0.0	0.0	150.0	50.0	0.0	0.0	0.0	0.0	0.0	0.0	0.0	0.0	0.0	200.0						
Construction	0.0	0.0	0.0	0.0	0.0	0.0	0.0	1,875.0	625.0	0.0	0.0	0.0	0.0	0.0	0.0	2,500.0						
Monitoring	0.0	0.0	0.0	0.0	0.0	0.0	0.0	0.0	0.0	0.0	75.0	25.0	0.0	0.0	0.0	100.0	M	M		M		
<b>Subtotal</b>	<b>0.0</b>	<b>0.0</b>	<b>0.0</b>	<b>0.0</b>	<b>150.0</b>	<b>50.0</b>	<b>0.0</b>	<b>1,875.0</b>	<b>625.0</b>	<b>0.0</b>	<b>75.0</b>	<b>25.0</b>	<b>0.0</b>	<b>0.0</b>	<b>0.0</b>	<b>2,800.0</b>						
<b>TOTAL</b>	<b>12,374.8</b>	<b>3,178.9</b>	<b>4,219.5</b>	<b>5,210.9</b>	<b>9,258.0</b>	<b>12,811.2</b>	<b>79.1</b>	<b>1,981.1</b>	<b>759.9</b>	<b>0.0</b>	<b>305.3</b>	<b>302.5</b>	<b>9,240.0</b>	<b>2,826.8</b>	<b>3,229.0</b>	<b>65,777.0</b>						
FY TOTAL (Federal, State, Local)			<b>19,773.2</b>			<b>27,280.1</b>			<b>2,820.1</b>			<b>607.8</b>			<b>15,295.8</b>	<b>65,777.0</b>						

FLORIDA DEPARTMENT OF ENVIRONMENTAL PROTECTION

Division of Water Restoration Assistance

FY 2018-2028 Long Range Budget Plan

Central Atlantic Coast (in thousands of dollars)

<b>Cape Canaveral - Volusia/Brevard County Line to Brevard County R162</b>																						
<b>Canaveral Port Authority</b>																						
<b>Port Canaveral IMP Implementation (R1-R20)</b>																						
Project	Federal FY 18/19	State FY 18/19	Local FY 18/19	Federal FY 19/20	State FY 19/20	Local FY 19/20	Federal FY 20/21	State FY 20/21	Local FY 20/21	Federal FY 21/22	State FY 21/22	Local FY 21/22	Federal FY 22/23	State FY 22/23	Local FY 22/23	TOTAL	FY 23/24	FY 24/25	FY 25/26	FY 26/27	FY 27/28	
Feasibility	0.0	0.0	0.0	0.0	0.0	0.0	0.0	0.0	0.0	0.0	0.0	0.0	0.0	0.0	0.0	0.0	0.0					
Design	0.0	0.0	0.0	0.0	0.0	0.0	0.0	0.0	0.0	0.0	0.0	0.0	200.0	34.5	11.5	246.0						
Construction	0.0	0.0	0.0	0.0	0.0	0.0	0.0	0.0	0.0	0.0	0.0	0.0	0.0	0.0	0.0	0.0		C				
Monitoring	0.0	0.0	0.0	0.0	75.0	25.0	0.0	97.5	32.5	0.0	0.0	0.0	0.0	49.5	16.5	296.0	M	M	M	M	M	
<b>Subtotal</b>	<b>0.0</b>	<b>0.0</b>	<b>0.0</b>	<b>0.0</b>	<b>75.0</b>	<b>25.0</b>	<b>0.0</b>	<b>97.5</b>	<b>32.5</b>	<b>0.0</b>	<b>0.0</b>	<b>0.0</b>	<b>200.0</b>	<b>84.0</b>	<b>28.0</b>	<b>542.0</b>						
<b>Brevard County</b>																						
<b>North and South Reaches/ Brevard County Shore Protection Project (R1-R54.5, R118.3-R139)</b>																						
Project	Federal FY 18/19	State FY 18/19	Local FY 18/19	Federal FY 19/20	State FY 19/20	Local FY 19/20	Federal FY 20/21	State FY 20/21	Local FY 20/21	Federal FY 21/22	State FY 21/22	Local FY 21/22	Federal FY 22/23	State FY 22/23	Local FY 22/23	TOTAL	FY 23/24	FY 24/25	FY 25/26	FY 26/27	FY 27/28	
Feasibility	0.0	0.0	0.0	0.0	0.0	0.0	0.0	0.0	0.0	0.0	0.0	0.0	0.0	0.0	0.0	0.0	0.0					
Design	0.0	0.0	0.0	0.0	0.0	0.0	0.0	0.0	0.0	0.0	0.0	0.0	0.0	0.0	0.0	0.0	0.0					
Construction	0.0	517.2	532.8	0.0	0.0	0.0	0.0	0.0	0.0	0.0	0.0	0.0	0.0	0.0	0.0	1,050.0	C					
Monitoring	0.0	0.0	0.0	0.0	221.7	228.3	0.0	309.1	318.4	0.0	123.2	126.8	0.0	123.2	126.8	1,577.5		M	M	M	M	
<b>Subtotal</b>	<b>0.0</b>	<b>517.2</b>	<b>532.8</b>	<b>0.0</b>	<b>221.7</b>	<b>228.3</b>	<b>0.0</b>	<b>309.1</b>	<b>318.4</b>	<b>0.0</b>	<b>123.2</b>	<b>126.8</b>	<b>0.0</b>	<b>123.2</b>	<b>126.8</b>	<b>2,627.5</b>						
<b>Brevard County</b>																						
<b>Mid-Reach Segment/ Brevard County Shore Protection Project (R75.4-R118.3)</b>																						
Project	Federal FY 18/19	State FY 18/19	Local FY 18/19	Federal FY 19/20	State FY 19/20	Local FY 19/20	Federal FY 20/21	State FY 20/21	Local FY 20/21	Federal FY 21/22	State FY 21/22	Local FY 21/22	Federal FY 22/23	State FY 22/23	Local FY 22/23	TOTAL	FY 23/24	FY 24/25	FY 25/26	FY 26/27	FY 27/28	
Feasibility	0.0	0.0	0.0	0.0	0.0	0.0	0.0	0.0	0.0	0.0	0.0	0.0	0.0	0.0	0.0	0.0	0.0					
Design	0.0	0.0	0.0	0.0	0.0	0.0	0.0	0.0	0.0	0.0	0.0	0.0	0.0	0.0	0.0	0.0	0.0					
Construction	0.0	300.0	300.0	0.0	300.0	300.0	4,862.0	3,069.0	3,069.0	0.0	0.0	0.0	0.0	0.0	0.0	12,200.0	C				C	
Monitoring	0.0	0.0	0.0	0.0	0.0	0.0	0.0	300.0	300.0	0.0	300.0	300.0	0.0	300.0	300.0	1,800.0	M	M	M	M	M	
<b>Subtotal</b>	<b>0.0</b>	<b>300.0</b>	<b>300.0</b>	<b>0.0</b>	<b>300.0</b>	<b>300.0</b>	<b>4,862.0</b>	<b>3,369.0</b>	<b>3,369.0</b>	<b>0.0</b>	<b>300.0</b>	<b>300.0</b>	<b>0.0</b>	<b>300.0</b>	<b>300.0</b>	<b>14,000.0</b>						
<b>Indian River Coast - Brevard County R162 to Indian River/St. Lucie County Line</b>																						
<b>Sebastian Inlet Tax District</b>																						
<b>Sebastian IMP Implementation (R3-R17)</b>																						
Project	Federal FY 18/19	State FY 18/19	Local FY 18/19	Federal FY 19/20	State FY 19/20	Local FY 19/20	Federal FY 20/21	State FY 20/21	Local FY 20/21	Federal FY 21/22	State FY 21/22	Local FY 21/22	Federal FY 22/23	State FY 22/23	Local FY 22/23	TOTAL	FY 23/24	FY 24/25	FY 25/26	FY 26/27	FY 27/28	
Feasibility	0.0	0.0	0.0	0.0	0.0	0.0	0.0	0.0	0.0	0.0	0.0	0.0	0.0	0.0	0.0	0.0	0.0					
Design	0.0	0.0	0.0	0.0	90.0	30.0	0.0	0.0	0.0	0.0	0.0	0.0	0.0	0.0	0.0	120.0						
Construction	0.0	0.0	0.0	0.0	0.0	0.0	0.0	3,000.0	1,000.0	0.0	435.0	145.0	0.0	0.0	0.0	4,580.0		C	C			
Monitoring	0.0	0.0	0.0	0.0	153.0	51.0	0.0	153.0	51.0	0.0	153.0	51.0	0.0	153.0	51.0	816.0	M	M	M	M	M	
<b>Subtotal</b>	<b>0.0</b>	<b>0.0</b>	<b>0.0</b>	<b>0.0</b>	<b>243.0</b>	<b>81.0</b>	<b>0.0</b>	<b>3,153.0</b>	<b>1,051.0</b>	<b>0.0</b>	<b>588.0</b>	<b>196.0</b>	<b>0.0</b>	<b>153.0</b>	<b>51.0</b>	<b>5,516.0</b>						
<b>Indian River County</b>																						
<b>Ambersand Beach Nourishment (R3.5-R17)</b>																						
Project	Federal FY 18/19	State FY 18/19	Local FY 18/19	Federal FY 19/20	State FY 19/20	Local FY 19/20	Federal FY 20/21	State FY 20/21	Local FY 20/21	Federal FY 21/22	State FY 21/22	Local FY 21/22	Federal FY 22/23	State FY 22/23	Local FY 22/23	TOTAL	FY 23/24	FY 24/25	FY 25/26	FY 26/27	FY 27/28	
Feasibility	0.0	0.0	0.0	0.0	0.0	0.0	0.0	0.0	0.0	0.0	0.0	0.0	0.0	0.0	0.0	0.0	0.0					
Design	0.0	0.0	0.0	0.0	0.0	0.0	0.0	0.0	0.0	0.0	0.0	0.0	0.0	0.0	0.0	0.0	0.0					
Construction	0.0	0.0	0.0	0.0	0.0	0.0	0.0	0.0	0.0	0.0	0.0	0.0	0.0	0.0	0.0	0.0	0.0					
Monitoring	0.0	0.0	0.0	0.0	0.0	0.0	0.0	0.0	0.0	0.0	0.0	0.0	0.0	0.0	0.0	0.0	0.0					
<b>Subtotal</b>	<b>0.0</b>	<b>0.0</b>	<b>0.0</b>	<b>0.0</b>	<b>0.0</b>	<b>0.0</b>	<b>0.0</b>	<b>0.0</b>	<b>0.0</b>	<b>0.0</b>	<b>0.0</b>	<b>0.0</b>	<b>0.0</b>	<b>0.0</b>	<b>0.0</b>	<b>0.0</b>	<b>0.0</b>					
<b>Indian River County</b>																						
<b>Wabasso Beach Restoration (R20-R55)</b>																						
Project	Federal FY 18/19	State FY 18/19	Local FY 18/19	Federal FY 19/20	State FY 19/20	Local FY 19/20	Federal FY 20/21	State FY 20/21	Local FY 20/21	Federal FY 21/22	State FY 21/22	Local FY 21/22	Federal FY 22/23	State FY 22/23	Local FY 22/23	TOTAL	FY 23/24	FY 24/25	FY 25/26	FY 26/27	FY 27/28	
Feasibility	0.0	0.0	0.0	0.0	0.0	0.0	0.0	0.0	0.0	0.0	0.0	0.0	0.0	100.0	100.0	200.0						
Design	0.0	0.0	0.0	0.0	0.0	0.0	0.0	0.0	0.0	0.0	0.0	0.0	0.0	0.0	0.0	0.0	D					
Construction	0.0	0.0	0.0	0.0	0.0	0.0	0.0	0.0	0.0	0.0	0.0	0.0	0.0	0.0	0.0	0.0		C				
Monitoring	0.0	0.0	0.0	0.0	150.0	150.0	0.0	150.0	150.0	0.0	150.0	150.0	0.0	0.0	0.0	900.0	M				M	
<b>Subtotal</b>	<b>0.0</b>	<b>0.0</b>	<b>0.0</b>	<b>0.0</b>	<b>150.0</b>	<b>150.0</b>	<b>0.0</b>	<b>150.0</b>	<b>150.0</b>	<b>0.0</b>	<b>150.0</b>	<b>150.0</b>	<b>0.0</b>	<b>100.0</b>	<b>100.0</b>	<b>1,100.0</b>						
<b>Indian River County</b>																						
<b>Vero Beach Feasibility Study (R74-R86)</b>																						
Project	Federal FY 18/19	State FY 18/19	Local FY 18/19	Federal FY 19/20	State FY 19/20	Local FY 19/20	Federal FY 20/21	State FY 20/21	Local FY 20/21	Federal FY 21/22	State FY 21/22	Local FY 21/22	Federal FY 22/23	State FY 22/23	Local FY 22/23	TOTAL	FY 23/24	FY 24/25	FY 25/26	FY 26/27	FY 27/28	
Feasibility	0.0	87.5	87.5	0.0	0.0	0.0	0.0	0.0	0.0	0.0	0.0	0.0	0.0	0.0	0.0	175.0						
Design	0.0	233.2	266.8	0.0	0.0	0.0	0.0	0.0	0.0	0.0	0.0	0.0	0.0	0.0	0.0	500.0				D		
Construction	938.9	1,428.0	1,633.1	8,268.8	980.9	4,250.4	0.0	0.0	0.0	0.0	0.0	0.0	0.0	0.0	0.0	17,500.1						
Monitoring	0.0	0.0	0.0	0.0	39.4	170.6	0.0	39.4	170.6	0.0	39.4	170.6	0.0	28.1	121.9	780.0	M	M		M	C	
<b>Subtotal</b>	<b>938.9</b>	<b>1,748.7</b>	<b>1,987.4</b>	<b>8,268.8</b>	<b>1,020.3</b>	<b>4,421.0</b>	<b>0.0</b>	<b>39.4</b>	<b>170.6</b>	<b>0.0</b>	<b>39.4</b>	<b>170.6</b>	<b>0.0</b>	<b>28.1</b>	<b>121.9</b>	<b>18,955.1</b>						

FLORIDA DEPARTMENT OF ENVIRONMENTAL PROTECTION

Division of Water Restoration Assistance

FY 2018-2028 Long Range Budget Plan

Central Atlantic Coast (in thousands of dollars)

<b>St. Lucie Beaches - Indian River/St. Lucie County Line to St. Lucie County R81</b>																						
<b>St. Lucie County</b>																						
<b>Fort Pierce IMP Implementation (R28-R47)</b>																						
Project	Federal FY 18/19	State FY 18/19	Local FY 18/19	Federal FY 19/20	State FY 19/20	Local FY 19/20	Federal FY 20/21	State FY 20/21	Local FY 20/21	Federal FY 21/22	State FY 21/22	Local FY 21/22	Federal FY 22/23	State FY 22/23	Local FY 22/23	TOTAL	FY 23/24	FY 24/25	FY 25/26	FY 26/27	FY 27/28	
Feasibility	0.0	0.0	0.0	0.0	0.0	0.0	0.0	0.0	0.0	0.0	0.0	0.0	0.0	0.0	0.0	0.0	0.0					
Design	0.0	0.0	0.0	0.0	0.0	0.0	0.0	0.0	0.0	0.0	150.0	50.0	0.0	0.0	0.0	200.0	D	D	D	D	D	
Construction	0.0	680.0	226.0	0.0	0.0	0.0	0.0	0.0	0.0	0.0	0.0	0.0	0.0	7.5	2.5	916.0	C		C		C	
Monitoring	0.0	0.0	0.0	0.0	38.0	13.0	0.0	38.0	13.0	0.0	38.0	13.0	0.0	1.0	1.0	155.0	M	M	M	M	M	
<b>Subtotal</b>	<b>0.0</b>	<b>680.0</b>	<b>226.0</b>	<b>0.0</b>	<b>38.0</b>	<b>13.0</b>	<b>0.0</b>	<b>38.0</b>	<b>13.0</b>	<b>0.0</b>	<b>188.0</b>	<b>63.0</b>	<b>0.0</b>	<b>8.5</b>	<b>3.5</b>	<b>1,271.0</b>						
<b>St. Lucie County</b>																						
<b>Fort Pierce Shore Protection Project (R34-R41)</b>																						
Project	Federal FY 18/19	State FY 18/19	Local FY 18/19	Federal FY 19/20	State FY 19/20	Local FY 19/20	Federal FY 20/21	State FY 20/21	Local FY 20/21	Federal FY 21/22	State FY 21/22	Local FY 21/22	Federal FY 22/23	State FY 22/23	Local FY 22/23	TOTAL	FY 23/24	FY 24/25	FY 25/26	FY 26/27	FY 27/28	
Feasibility	0.0	0.0	0.0	0.0	0.0	0.0	0.0	0.0	0.0	0.0	0.0	0.0	0.0	0.0	0.0	0.0	0.0					
Design	0.0	0.0	0.0	0.0	0.0	0.0	0.0	150.0	150.0	0.0	100.0	100.0	0.0	0.0	0.0	500.0	D	D	D	D	D	
Construction	369.0	53.0	53.0	6,998.0	1,021.0	1,021.0	0.0	0.0	0.0	15,552.0	2,224.0	2,224.0	0.0	0.0	0.0	29,515.0	C		C		C	
Monitoring	0.0	130.0	130.0	0.0	130.0	130.0	0.0	130.0	130.0	0.0	50.0	50.0	0.0	150.0	150.0	1,180.0	M	M	M	M	M	
<b>Subtotal</b>	<b>369.0</b>	<b>183.0</b>	<b>183.0</b>	<b>6,998.0</b>	<b>1,151.0</b>	<b>1,151.0</b>	<b>0.0</b>	<b>280.0</b>	<b>280.0</b>	<b>15,552.0</b>	<b>2,374.0</b>	<b>2,374.0</b>	<b>0.0</b>	<b>150.0</b>	<b>150.0</b>	<b>31,195.0</b>						
<b>St. Lucie County</b>																						
<b>South St. Lucie County Beach Restoration (R88.5-R90.3, R98-R115)</b>																						
Project	Federal FY 18/19	State FY 18/19	Local FY 18/19	Federal FY 19/20	State FY 19/20	Local FY 19/20	Federal FY 20/21	State FY 20/21	Local FY 20/21	Federal FY 21/22	State FY 21/22	Local FY 21/22	Federal FY 22/23	State FY 22/23	Local FY 22/23	TOTAL	FY 23/24	FY 24/25	FY 25/26	FY 26/27	FY 27/28	
Feasibility	0.0	0.0	0.0	0.0	0.0	0.0	0.0	0.0	0.0	0.0	0.0	0.0	0.0	0.0	0.0	0.0	0.0					
Design	0.0	0.0	0.0	0.0	0.0	0.0	0.0	0.0	0.0	0.0	0.0	0.0	0.0	200.0	0.0	200.0	0.0					
Construction	0.0	0.0	0.0	0.0	0.0	0.0	0.0	0.0	0.0	0.0	0.0	0.0	0.0	200.0	0.0	200.0	0.0					
Monitoring	0.0	0.0	0.0	0.0	17.0	22.0	0.0	0.0	0.0	0.0	17.0	23.0	0.0	0.0	0.0	79.0	M	M	M		M	
<b>Subtotal</b>	<b>0.0</b>	<b>0.0</b>	<b>0.0</b>	<b>0.0</b>	<b>17.0</b>	<b>22.0</b>	<b>0.0</b>	<b>0.0</b>	<b>0.0</b>	<b>0.0</b>	<b>17.0</b>	<b>23.0</b>	<b>0.0</b>	<b>400.0</b>	<b>0.0</b>	<b>479.0</b>						
<b>Treasure Coast - St. Lucie County R81 to Martin County R126</b>																						
<b>Martin County</b>																						
<b>Martin County Shore Protection Project (R1-R25.6)</b>																						
Project	Federal FY 18/19	State FY 18/19	Local FY 18/19	Federal FY 19/20	State FY 19/20	Local FY 19/20	Federal FY 20/21	State FY 20/21	Local FY 20/21	Federal FY 21/22	State FY 21/22	Local FY 21/22	Federal FY 22/23	State FY 22/23	Local FY 22/23	TOTAL	FY 23/24	FY 24/25	FY 25/26	FY 26/27	FY 27/28	
Feasibility	0.0	0.0	0.0	0.0	0.0	0.0	0.0	0.0	0.0	0.0	0.0	0.0	0.0	0.0	0.0	0.0	0.0					
Design	0.0	114.5	135.5	0.0	0.0	0.0	0.0	0.0	0.0	0.0	0.0	0.0	0.0	0.0	0.0	250.0	D					
Construction	7,100.0	3,336.9	3,949.0	0.0	0.0	0.0	0.0	0.0	0.0	0.0	0.0	0.0	0.0	0.0	0.0	14,385.9		C	C			
Monitoring	0.0	0.0	0.0	0.0	206.1	243.9	0.0	206.1	243.9	0.0	206.1	243.9	0.0	0.0	0.0	1,350.0				M		
<b>Subtotal</b>	<b>7,100.0</b>	<b>3,451.4</b>	<b>4,084.5</b>	<b>0.0</b>	<b>206.1</b>	<b>243.9</b>	<b>0.0</b>	<b>206.1</b>	<b>243.9</b>	<b>0.0</b>	<b>206.1</b>	<b>243.9</b>	<b>0.0</b>	<b>0.0</b>	<b>0.0</b>	<b>15,985.9</b>						
<b>Martin County</b>																						
<b>Bathtub Beach Restoration (R34.8-R35.5)</b>																						
Project	Federal FY 18/19	State FY 18/19	Local FY 18/19	Federal FY 19/20	State FY 19/20	Local FY 19/20	Federal FY 20/21	State FY 20/21	Local FY 20/21	Federal FY 21/22	State FY 21/22	Local FY 21/22	Federal FY 22/23	State FY 22/23	Local FY 22/23	TOTAL	FY 23/24	FY 24/25	FY 25/26	FY 26/27	FY 27/28	
Feasibility	0.0	0.0	0.0	0.0	0.0	0.0	0.0	0.0	0.0	0.0	0.0	0.0	0.0	0.0	0.0	0.0	0.0					
Design	0.0	0.0	0.0	0.0	0.0	0.0	0.0	0.0	0.0	0.0	0.0	0.0	0.0	0.0	0.0	0.0	0.0					
Construction	0.0	0.0	0.0	0.0	0.0	0.0	0.0	0.0	0.0	0.0	0.0	0.0	0.0	0.0	0.0	0.0	0.0					
Monitoring	0.0	0.0	0.0	0.0	0.0	0.0	0.0	0.0	0.0	0.0	0.0	0.0	0.0	0.0	0.0	0.0	0.0					
<b>Subtotal</b>	<b>0.0</b>	<b>0.0</b>	<b>0.0</b>	<b>0.0</b>	<b>0.0</b>	<b>0.0</b>	<b>0.0</b>	<b>0.0</b>	<b>0.0</b>	<b>0.0</b>	<b>0.0</b>	<b>0.0</b>	<b>0.0</b>	<b>0.0</b>	<b>0.0</b>	<b>0.0</b>	<b>0.0</b>					
<b>Martin County</b>																						
<b>Bathtub Beach/ Sailfish Point Beach Nourishment (R34.8-R38.5)</b>																						
Project	Federal FY 18/19	State FY 18/19	Local FY 18/19	Federal FY 19/20	State FY 19/20	Local FY 19/20	Federal FY 20/21	State FY 20/21	Local FY 20/21	Federal FY 21/22	State FY 21/22	Local FY 21/22	Federal FY 22/23	State FY 22/23	Local FY 22/23	TOTAL	FY 23/24	FY 24/25	FY 25/26	FY 26/27	FY 27/28	
Feasibility	0.0	0.0	0.0	0.0	0.0	0.0	0.0	0.0	0.0	0.0	0.0	0.0	0.0	0.0	0.0	0.0	0.0					
Design	0.0	0.0	0.0	0.0	0.0	0.0	0.0	0.0	0.0	0.0	75.0	75.0	0.0	0.0	0.0	150.0						
Construction	0.0	0.0	0.0	0.0	0.0	0.0	0.0	0.0	0.0	0.0	1,000.0	1,000.0	0.0	0.0	0.0	2,000.0						
Monitoring	0.0	0.0	0.0	0.0	150.0	150.0	0.0	0.0	0.0	0.0	0.0	0.0	0.0	150.0	0.0	450.0		M		M	M	
<b>Subtotal</b>	<b>0.0</b>	<b>0.0</b>	<b>0.0</b>	<b>0.0</b>	<b>150.0</b>	<b>150.0</b>	<b>0.0</b>	<b>0.0</b>	<b>0.0</b>	<b>0.0</b>	<b>1,075.0</b>	<b>1,075.0</b>	<b>0.0</b>	<b>150.0</b>	<b>0.0</b>	<b>2,600.0</b>						
<b>Martin County</b>																						
<b>St. Lucie IMP Implementation (R45-R75)</b>																						
Project	Federal FY 18/19	State FY 18/19	Local FY 18/19	Federal FY 19/20	State FY 19/20	Local FY 19/20	Federal FY 20/21	State FY 20/21	Local FY 20/21	Federal FY 21/22	State FY 21/22	Local FY 21/22	Federal FY 22/23	State FY 22/23	Local FY 22/23	TOTAL	FY 23/24	FY 24/25	FY 25/26	FY 26/27	FY 27/28	
Feasibility	0.0	0.0	0.0	0.0	0.0	0.0	0.0	0.0	0.0	0.0	0.0	0.0	0.0	0.0	0.0	0.0	0.0					
Design	0.0	0.0	0.0	0.0	0.0	0.0	0.0	0.0	0.0	0.0	0.0	0.0	0.0	0.0	0.0	0.0	0.0					
Construction	15,628.5	8,058.4	2,686.1	0.0	0.0	0.0	0.0	7,837.5	2,612.5	0.0	0.0	0.0	0.0	0.0	0.0	36,823.0	C			C		
Monitoring	0.0	337.5	112.5	0.0	337.5	112.5	0.0	0.0	0.0	0.0	337.5	112.5	337.5	112.5	0.0	1,800.0		M	M		M	
<b>Subtotal</b>	<b>15,628.5</b>	<b>8,395.9</b>	<b>2,798.6</b>	<b>0.0</b>	<b>337.5</b>	<b>112.5</b>	<b>0.0</b>	<b>7,837.5</b>	<b>2,612.5</b>	<b>0.0</b>	<b>337.5</b>	<b>112.5</b>	<b>337.5</b>	<b>112.5</b>	<b>0.0</b>	<b>38,623.0</b>						

FLORIDA DEPARTMENT OF ENVIRONMENTAL PROTECTION  
 Division of Water Restoration Assistance  
 FY 2018-2028 Long Range Budget Plan

Central Atlantic Coast (in thousands of dollars)

Town of Jupiter Island																					
Jupiter Island Beach Nourishment (R75-R111)																					
Project	Federal FY 18/19	State FY 18/19	Local FY 18/19	Federal FY 19/20	State FY 19/20	Local FY 19/20	Federal FY 20/21	State FY 20/21	Local FY 20/21	Federal FY 21/22	State FY 21/22	Local FY 21/22	Federal FY 22/23	State FY 22/23	Local FY 22/23	TOTAL	FY 23/24	FY 24/25	FY 25/26	FY 26/27	FY 27/28
Feasibility	0.0	0.0	0.0	0.0	0.0	0.0	0.0	0.0	0.0	0.0	0.0	0.0	0.0	0.0	0.0	0.0					
Design	0.0	7.6	33.5	0.0	0.0	0.0	0.0	0.0	0.0	0.0	0.0	0.0	0.0	0.0	0.0	41.1					
Construction	0.0	34.1	149.8	8,268.8	1,453.2	3,778.0	0.0	0.0	0.0	0.0	0.0	0.0	0.0	41.7	108.3	13,833.9		C			
Monitoring	0.0	39.0	171.0	0.0	58.4	151.6	0.0	58.4	151.6	0.0	58.4	151.6	0.0	0.0	0.0	840.0	M	M	M	M	M
<b>Subtotal</b>	<b>0.0</b>	<b>80.7</b>	<b>354.3</b>	<b>8,268.8</b>	<b>1,511.6</b>	<b>3,929.6</b>	<b>0.0</b>	<b>58.4</b>	<b>151.6</b>	<b>0.0</b>	<b>58.4</b>	<b>151.6</b>	<b>0.0</b>	<b>41.7</b>	<b>108.3</b>	<b>14,715.0</b>					
<b>TOTAL</b>	<b>24,036.4</b>	<b>15,356.9</b>	<b>10,466.6</b>	<b>23,535.6</b>	<b>5,421.2</b>	<b>10,827.3</b>	<b>4,862.0</b>	<b>15,538.0</b>	<b>8,392.5</b>	<b>15,552.0</b>	<b>5,456.6</b>	<b>4,986.4</b>	<b>537.5</b>	<b>1,651.0</b>	<b>989.5</b>	<b>147,609.5</b>					
FY TOTAL (Federal, State, Local)			<b>49,859.9</b>			<b>39,784.1</b>			<b>28,792.5</b>			<b>25,995.0</b>			<b>3,178.0</b>	<b>147,609.5</b>					



FLORIDA DEPARTMENT OF ENVIRONMENTAL PROTECTION

Division of Water Restoration Assistance

FY 2018-2028 Long Range Budget Plan

Southeast Atlantic Coast (in thousands of dollars)

<b>Northern Palm Beaches - Martin County R126 to Palm Beach County R70</b>																						
<b>Palm Beach County</b>																						
<b>Coral Cove Park Dune Nourishment (R5-R8)</b>																						
Project	Federal FY 18/19	State FY 18/19	Local FY 18/19	Federal FY 19/20	State FY 19/20	Local FY 19/20	Federal FY 20/21	State FY 20/21	Local FY 20/21	Federal FY 21/22	State FY 21/22	Local FY 21/22	Federal FY 22/23	State FY 22/23	Local FY 22/23	TOTAL	FY 23/24	FY 24/25	FY 25/26	FY 26/27	FY 27/28	
Feasibility	0.0	0.0	0.0	0.0	0.0	0.0	0.0	0.0	0.0	0.0	0.0	0.0	0.0	0.0	0.0	0.0	0.0					
Design	0.0	0.0	0.0	0.0	0.0	0.0	0.0	0.0	0.0	0.0	0.0	0.0	0.0	0.0	0.0	0.0	0.0					
Construction	0.0	400.0	400.0	0.0	0.0	0.0	0.0	0.0	0.0	0.0	0.0	0.0	0.0	425.0	425.0	1,650.0					C	
Monitoring	0.0	0.0	0.0	0.0	25.0	25.0	0.0	5.0	5.0	0.0	5.0	5.0	0.0	0.0	0.0	70.0	M	M	M			M
<b>Subtotal</b>	<b>0.0</b>	<b>400.0</b>	<b>400.0</b>	<b>0.0</b>	<b>25.0</b>	<b>25.0</b>	<b>0.0</b>	<b>5.0</b>	<b>5.0</b>	<b>0.0</b>	<b>5.0</b>	<b>5.0</b>	<b>0.0</b>	<b>425.0</b>	<b>425.0</b>	<b>1,720.0</b>						
<b>Jupiter Inlet District</b>																						
<b>Jupiter IMP Implementation (R12-R17) - Standard O&amp;M is not eligible for cost-sharing, but the inlet may have components in the future that are eligible for cost sharing.</b>																						
Project	Federal FY 18/19	State FY 18/19	Local FY 18/19	Federal FY 19/20	State FY 19/20	Local FY 19/20	Federal FY 20/21	State FY 20/21	Local FY 20/21	Federal FY 21/22	State FY 21/22	Local FY 21/22	Federal FY 22/23	State FY 22/23	Local FY 22/23	TOTAL	FY 23/24	FY 24/25	FY 25/26	FY 26/27	FY 27/28	
Feasibility	0.0	0.0	0.0	0.0	0.0	0.0	0.0	0.0	0.0	0.0	0.0	0.0	0.0	0.0	0.0	0.0	0.0					
Design	0.0	0.0	0.0	0.0	0.0	0.0	0.0	0.0	0.0	0.0	0.0	0.0	0.0	0.0	0.0	0.0	0.0					
Construction	0.0	0.0	0.0	0.0	0.0	0.0	0.0	0.0	0.0	0.0	0.0	0.0	0.0	0.0	0.0	0.0	0.0					
Monitoring	0.0	0.0	0.0	0.0	0.0	0.0	0.0	0.0	0.0	0.0	0.0	0.0	0.0	0.0	0.0	0.0	0.0					
<b>Subtotal</b>	<b>0.0</b>	<b>0.0</b>	<b>0.0</b>	<b>0.0</b>	<b>0.0</b>	<b>0.0</b>	<b>0.0</b>	<b>0.0</b>	<b>0.0</b>	<b>0.0</b>	<b>0.0</b>	<b>0.0</b>	<b>0.0</b>	<b>0.0</b>	<b>0.0</b>	<b>0.0</b>	<b>0.0</b>					
<b>Palm Beach County</b>																						
<b>Jupiter/Carlin Segment/ Palm Beach County Shore Protection Project (R13-R19)</b>																						
Project	Federal FY 18/19	State FY 18/19	Local FY 18/19	Federal FY 19/20	State FY 19/20	Local FY 19/20	Federal FY 20/21	State FY 20/21	Local FY 20/21	Federal FY 21/22	State FY 21/22	Local FY 21/22	Federal FY 22/23	State FY 22/23	Local FY 22/23	TOTAL	FY 23/24	FY 24/25	FY 25/26	FY 26/27	FY 27/28	
Feasibility	0.0	0.0	0.0	0.0	0.0	0.0	0.0	0.0	0.0	0.0	0.0	0.0	0.0	0.0	0.0	0.0	0.0					
Design	0.0	0.0	0.0	0.0	0.0	0.0	0.0	0.0	0.0	0.0	0.0	0.0	0.0	0.0	0.0	0.0	0.0					
Construction	0.0	7,300.0	7,300.0	0.0	0.0	0.0	0.0	0.0	0.0	0.0	0.0	0.0	0.0	0.0	0.0	14,600.0					D	
Monitoring	0.0	0.0	0.0	0.0	0.0	0.0	0.0	100.0	100.0	0.0	100.0	100.0	0.0	100.0	100.0	600.0	M	M	M			M
<b>Subtotal</b>	<b>0.0</b>	<b>7,300.0</b>	<b>7,300.0</b>	<b>0.0</b>	<b>0.0</b>	<b>0.0</b>	<b>0.0</b>	<b>100.0</b>	<b>100.0</b>	<b>0.0</b>	<b>100.0</b>	<b>100.0</b>	<b>0.0</b>	<b>100.0</b>	<b>100.0</b>	<b>15,200.0</b>						
<b>Palm Beach County</b>																						
<b>South Jupiter Beach Feasibility Study</b>																						
Project	Federal FY 18/19	State FY 18/19	Local FY 18/19	Federal FY 19/20	State FY 19/20	Local FY 19/20	Federal FY 20/21	State FY 20/21	Local FY 20/21	Federal FY 21/22	State FY 21/22	Local FY 21/22	Federal FY 22/23	State FY 22/23	Local FY 22/23	TOTAL	FY 23/24	FY 24/25	FY 25/26	FY 26/27	FY 27/28	
Feasibility	0.0	83.3	83.3	0.0	0.0	0.0	0.0	0.0	0.0	0.0	0.0	0.0	0.0	0.0	0.0	166.6						
Design	0.0	0.0	0.0	0.0	50.0	50.0	0.0	0.0	0.0	0.0	0.0	0.0	0.0	0.0	0.0	100.0						
Construction	0.0	0.0	0.0	0.0	0.0	0.0	0.0	2,700.0	2,700.0	0.0	0.0	0.0	0.0	0.0	0.0	5,400.0						
Monitoring	0.0	0.0	0.0	0.0	0.0	0.0	0.0	0.0	0.0	0.0	100.0	100.0	0.0	100.0	100.0	400.0			M			M
<b>Subtotal</b>	<b>0.0</b>	<b>83.3</b>	<b>83.3</b>	<b>0.0</b>	<b>50.0</b>	<b>50.0</b>	<b>0.0</b>	<b>2,700.0</b>	<b>2,700.0</b>	<b>0.0</b>	<b>100.0</b>	<b>100.0</b>	<b>0.0</b>	<b>100.0</b>	<b>100.0</b>	<b>6,066.6</b>						
<b>Palm Beach County</b>																						
<b>Juno Beach Nourishment (R26-R38)</b>																						
Project	Federal FY 18/19	State FY 18/19	Local FY 18/19	Federal FY 19/20	State FY 19/20	Local FY 19/20	Federal FY 20/21	State FY 20/21	Local FY 20/21	Federal FY 21/22	State FY 21/22	Local FY 21/22	Federal FY 22/23	State FY 22/23	Local FY 22/23	TOTAL	FY 23/24	FY 24/25	FY 25/26	FY 26/27	FY 27/28	
Feasibility	0.0	0.0	0.0	0.0	0.0	0.0	0.0	0.0	0.0	0.0	0.0	0.0	0.0	0.0	0.0	0.0	0.0					
Design	75.0	137.5	137.5	0.0	0.0	0.0	0.0	0.0	0.0	0.0	0.0	0.0	0.0	0.0	0.0	350.0						
Construction	0.0	7,300.0	7,300.0	0.0	0.0	0.0	0.0	0.0	0.0	0.0	0.0	0.0	0.0	0.0	0.0	14,600.0						
Monitoring	0.0	0.0	0.0	0.0	0.0	0.0	0.0	100.0	100.0	0.0	100.0	100.0	0.0	100.0	100.0	600.0	M	M	M			M
<b>Subtotal</b>	<b>75.0</b>	<b>7,437.5</b>	<b>7,437.5</b>	<b>0.0</b>	<b>0.0</b>	<b>0.0</b>	<b>0.0</b>	<b>100.0</b>	<b>100.0</b>	<b>0.0</b>	<b>100.0</b>	<b>100.0</b>	<b>0.0</b>	<b>100.0</b>	<b>100.0</b>	<b>15,550.0</b>						
<b>Palm Beach County</b>																						
<b>Singer Island Shore Protection Project (R60.5-R69)</b>																						
Project	Federal FY 18/19	State FY 18/19	Local FY 18/19	Federal FY 19/20	State FY 19/20	Local FY 19/20	Federal FY 20/21	State FY 20/21	Local FY 20/21	Federal FY 21/22	State FY 21/22	Local FY 21/22	Federal FY 22/23	State FY 22/23	Local FY 22/23	TOTAL	FY 23/24	FY 24/25	FY 25/26	FY 26/27	FY 27/28	
Feasibility	0.0	0.0	0.0	0.0	0.0	0.0	0.0	0.0	0.0	0.0	0.0	0.0	0.0	0.0	0.0	0.0	0.0					
Design	0.0	0.0	0.0	0.0	0.0	0.0	0.0	0.0	0.0	0.0	0.0	0.0	0.0	0.0	0.0	0.0	0.0					
Construction	0.0	537.9	962.1	0.0	0.0	0.0	0.0	537.9	962.1	0.0	0.0	0.0	0.0	537.9	962.1	4,500.0			C			C
Monitoring	0.0	0.0	0.0	0.0	43.0	77.0	0.0	0.0	0.0	0.0	43.0	77.0	0.0	0.0	0.0	240.0	M			M		M
<b>Subtotal</b>	<b>0.0</b>	<b>537.9</b>	<b>962.1</b>	<b>0.0</b>	<b>43.0</b>	<b>77.0</b>	<b>0.0</b>	<b>537.9</b>	<b>962.1</b>	<b>0.0</b>	<b>43.0</b>	<b>77.0</b>	<b>0.0</b>	<b>537.9</b>	<b>962.1</b>	<b>4,740.0</b>						

FLORIDA DEPARTMENT OF ENVIRONMENTAL PROTECTION

Division of Water Restoration Assistance

FY 2018-2028 Long Range Budget Plan

Southeast Atlantic Coast (in thousands of dollars)

<b>Palm Beaches - Palm Beach County R70 to Palm Beach County R170</b>																						
<b>Town of Palm Beach</b>																						
<b>Lake Worth IMP Implementation (R76-R78.5)</b>																						
Project	Federal FY 18/19	State FY 18/19	Local FY 18/19	Federal FY 19/20	State FY 19/20	Local FY 19/20	Federal FY 20/21	State FY 20/21	Local FY 20/21	Federal FY 21/22	State FY 21/22	Local FY 21/22	Federal FY 22/23	State FY 22/23	Local FY 22/23	TOTAL	FY 23/24	FY 24/25	FY 25/26	FY 26/27	FY 27/28	
Feasibility	0.0	0.0	0.0	0.0	0.0	0.0	0.0	0.0	0.0	0.0	0.0	0.0	0.0	0.0	0.0	0.0	0.0					
Design	0.0	0.0	0.0	0.0	0.0	0.0	0.0	0.0	0.0	0.0	0.0	0.0	0.0	0.0	0.0	0.0	0.0					
Construction	0.0	0.0	0.0	0.0	0.0	0.0	0.0	0.0	0.0	0.0	0.0	0.0	0.0	0.0	0.0	0.0	0.0					
Monitoring	0.0	207.7	69.3	0.0	213.0	71.0	0.0	219.0	73.0	0.0	223.6	74.4	0.0	390.6	130.4	1,672.0	M	M	M	M	M	
<b>Subtotal</b>	<b>0.0</b>	<b>207.7</b>	<b>69.3</b>	<b>0.0</b>	<b>213.0</b>	<b>71.0</b>	<b>0.0</b>	<b>219.0</b>	<b>73.0</b>	<b>0.0</b>	<b>223.6</b>	<b>74.4</b>	<b>0.0</b>	<b>390.6</b>	<b>130.4</b>	<b>1,672.0</b>						
<b>Town of Palm Beach</b>																						
<b>Mid-Town Beach Nourishment (R90.5-R101.4)</b>																						
Project	Federal FY 18/19	State FY 18/19	Local FY 18/19	Federal FY 19/20	State FY 19/20	Local FY 19/20	Federal FY 20/21	State FY 20/21	Local FY 20/21	Federal FY 21/22	State FY 21/22	Local FY 21/22	Federal FY 22/23	State FY 22/23	Local FY 22/23	TOTAL	FY 23/24	FY 24/25	FY 25/26	FY 26/27	FY 27/28	
Feasibility	0.0	0.0	0.0	0.0	0.0	0.0	0.0	0.0	0.0	0.0	0.0	0.0	0.0	0.0	0.0	0.0	0.0					
Design	0.0	0.0	0.0	0.0	0.0	0.0	0.0	41.0	59.0	0.0	0.0	0.0	0.0	0.0	0.0	100.0						
Construction	0.0	538.1	776.0	0.0	0.0	0.0	0.0	0.0	0.0	0.0	7,309.6	10,540.4	0.0	0.0	0.0	19,164.1						
Monitoring	0.0	34.0	49.0	0.0	34.4	49.6	0.0	34.8	50.2	0.0	35.6	51.4	0.0	36.0	52.0	427.0	M	M	M	M	M	
<b>Subtotal</b>	<b>0.0</b>	<b>572.1</b>	<b>825.0</b>	<b>0.0</b>	<b>34.4</b>	<b>49.6</b>	<b>0.0</b>	<b>75.8</b>	<b>109.2</b>	<b>0.0</b>	<b>7,345.2</b>	<b>10,591.8</b>	<b>0.0</b>	<b>36.0</b>	<b>52.0</b>	<b>19,691.1</b>						
<b>Town of Palm Beach</b>																						
<b>Phipps Ocean Park Beach Nourishment (R118.7-R126)</b>																						
Project	Federal FY 18/19	State FY 18/19	Local FY 18/19	Federal FY 19/20	State FY 19/20	Local FY 19/20	Federal FY 20/21	State FY 20/21	Local FY 20/21	Federal FY 21/22	State FY 21/22	Local FY 21/22	Federal FY 22/23	State FY 22/23	Local FY 22/23	TOTAL	FY 23/24	FY 24/25	FY 25/26	FY 26/27	FY 27/28	
Feasibility	0.0	0.0	0.0	0.0	0.0	0.0	0.0	0.0	0.0	0.0	0.0	0.0	0.0	0.0	0.0	0.0	0.0					
Design	0.0	0.0	0.0	0.0	0.0	0.0	0.0	0.0	0.0	0.0	0.0	0.0	0.0	0.0	0.0	0.0	0.0					
Construction	0.0	7,410.0	11,590.0	0.0	0.0	0.0	0.0	0.0	0.0	0.0	0.0	0.0	0.0	0.0	0.0	19,000.0		C				
Monitoring	0.0	27.7	43.3	0.0	28.1	43.9	0.0	28.5	44.5	0.0	28.9	45.1	0.0	29.3	45.7	365.0	M	M	M	M	M	
<b>Subtotal</b>	<b>0.0</b>	<b>7,437.7</b>	<b>11,633.3</b>	<b>0.0</b>	<b>28.1</b>	<b>43.9</b>	<b>0.0</b>	<b>28.5</b>	<b>44.5</b>	<b>0.0</b>	<b>28.9</b>	<b>45.1</b>	<b>0.0</b>	<b>29.3</b>	<b>45.7</b>	<b>19,365.0</b>						
<b>Palm Beach County</b>																						
<b>Southern Palm Beach Island Restoration (R128-R138)</b>																						
Project	Federal FY 18/19	State FY 18/19	Local FY 18/19	Federal FY 19/20	State FY 19/20	Local FY 19/20	Federal FY 20/21	State FY 20/21	Local FY 20/21	Federal FY 21/22	State FY 21/22	Local FY 21/22	Federal FY 22/23	State FY 22/23	Local FY 22/23	TOTAL	FY 23/24	FY 24/25	FY 25/26	FY 26/27	FY 27/28	
Feasibility	0.0	225.0	225.0	0.0	0.0	0.0	0.0	0.0	0.0	0.0	0.0	0.0	0.0	0.0	0.0	450.0						
Design	0.0	188.0	212.0	0.0	0.0	0.0	0.0	0.0	0.0	0.0	0.0	0.0	0.0	0.0	0.0	400.0						
Construction	0.0	0.0	0.0	0.0	4,888.0	5,512.0	0.0	0.0	0.0	0.0	2,091.5	2,358.5	0.0	0.0	0.0	14,850.0		C			C	
Monitoring	0.0	0.0	0.0	0.0	94.0	106.0	0.0	94.0	106.0	0.0	94.0	106.0	0.0	94.0	106.0	800.0	M	M	M	M	M	
<b>Subtotal</b>	<b>0.0</b>	<b>413.0</b>	<b>437.0</b>	<b>0.0</b>	<b>4,982.0</b>	<b>5,618.0</b>	<b>0.0</b>	<b>94.0</b>	<b>106.0</b>	<b>0.0</b>	<b>2,185.5</b>	<b>2,464.5</b>	<b>0.0</b>	<b>94.0</b>	<b>106.0</b>	<b>16,500.0</b>						
<b>Palm Beach County</b>																						
<b>Central Palm Beach County Erosion Control Project (R134-R138.5)</b>																						
Project	Federal FY 18/19	State FY 18/19	Local FY 18/19	Federal FY 19/20	State FY 19/20	Local FY 19/20	Federal FY 20/21	State FY 20/21	Local FY 20/21	Federal FY 21/22	State FY 21/22	Local FY 21/22	Federal FY 22/23	State FY 22/23	Local FY 22/23	TOTAL	FY 23/24	FY 24/25	FY 25/26	FY 26/27	FY 27/28	
Feasibility	0.0	0.0	0.0	0.0	0.0	0.0	0.0	0.0	0.0	0.0	0.0	0.0	0.0	0.0	0.0	0.0	0.0					
Design	0.0	0.0	0.0	0.0	0.0	0.0	0.0	0.0	0.0	0.0	0.0	0.0	0.0	0.0	0.0	0.0	0.0					
Construction	0.0	0.0	0.0	0.0	0.0	0.0	0.0	0.0	0.0	0.0	0.0	0.0	0.0	0.0	0.0	0.0	0.0					
Monitoring	0.0	0.0	0.0	0.0	0.0	0.0	0.0	0.0	0.0	0.0	0.0	0.0	0.0	0.0	0.0	0.0	0.0					
<b>Subtotal</b>	<b>0.0</b>	<b>0.0</b>	<b>0.0</b>	<b>0.0</b>	<b>0.0</b>	<b>0.0</b>	<b>0.0</b>	<b>0.0</b>	<b>0.0</b>	<b>0.0</b>	<b>0.0</b>	<b>0.0</b>	<b>0.0</b>	<b>0.0</b>	<b>0.0</b>	<b>0.0</b>	<b>0.0</b>					
<b>Palm Beach County</b>																						
<b>South Lake Worth IMP Implementation (R152-R153)</b>																						
Project	Federal FY 18/19	State FY 18/19	Local FY 18/19	Federal FY 19/20	State FY 19/20	Local FY 19/20	Federal FY 20/21	State FY 20/21	Local FY 20/21	Federal FY 21/22	State FY 21/22	Local FY 21/22	Federal FY 22/23	State FY 22/23	Local FY 22/23	TOTAL	FY 23/24	FY 24/25	FY 25/26	FY 26/27	FY 27/28	
Feasibility	0.0	0.0	0.0	0.0	0.0	0.0	0.0	0.0	0.0	0.0	0.0	0.0	0.0	0.0	0.0	0.0	0.0					
Design	0.0	0.0	0.0	0.0	0.0	0.0	0.0	0.0	0.0	0.0	0.0	0.0	0.0	0.0	0.0	0.0	0.0					
Construction	0.0	0.0	0.0	0.0	0.0	0.0	0.0	750.0	250.0	0.0	0.0	0.0	0.0	0.0	0.0	1,000.0				C		
Monitoring	0.0	120.0	40.0	0.0	90.0	30.0	0.0	112.5	37.5	0.0	112.5	37.5	0.0	112.5	37.5	730.0	M	M	M	M	M	
<b>Subtotal</b>	<b>0.0</b>	<b>120.0</b>	<b>40.0</b>	<b>0.0</b>	<b>90.0</b>	<b>30.0</b>	<b>0.0</b>	<b>862.5</b>	<b>287.5</b>	<b>0.0</b>	<b>112.5</b>	<b>37.5</b>	<b>0.0</b>	<b>112.5</b>	<b>37.5</b>	<b>1,730.0</b>						
<b>Palm Beach County</b>																						
<b>Ocean Ridge Segment/ Palm Beach County Shore Protection Project (R152-R159)</b>																						
Project	Federal FY 18/19	State FY 18/19	Local FY 18/19	Federal FY 19/20	State FY 19/20	Local FY 19/20	Federal FY 20/21	State FY 20/21	Local FY 20/21	Federal FY 21/22	State FY 21/22	Local FY 21/22	Federal FY 22/23	State FY 22/23	Local FY 22/23	TOTAL	FY 23/24	FY 24/25	FY 25/26	FY 26/27	FY 27/28	
Feasibility	0.0	0.0	0.0	0.0	0.0	0.0	0.0	0.0	0.0	0.0	0.0	0.0	0.0	0.0	0.0	0.0	0.0					
Design	194.8	102.6	102.6	48.7	25.7	25.6	48.7	25.7	25.6	0.0	0.0	0.0	0.0	0.0	0.0	600.0						
Construction	0.0	0.0	0.0	0.0	0.0	0.0	0.0	0.0	0.0	8,279.0	4,360.5	4,360.5	0.0	0.0	0.0	17,000.0				C		
Monitoring	0.0	0.0	0.0	0.0	100.0	100.0	0.0	100.0	100.0	0.0	100.0	100.0	0.0	100.0	100.0	800.0	M	M	M		M	
<b>Subtotal</b>	<b>194.8</b>	<b>102.6</b>	<b>102.6</b>	<b>48.7</b>	<b>125.7</b>	<b>125.6</b>	<b>48.7</b>	<b>125.7</b>	<b>125.6</b>	<b>8,279.0</b>	<b>4,460.5</b>	<b>4,460.5</b>	<b>0.0</b>	<b>100.0</b>	<b>100.0</b>	<b>18,400.0</b>						

FLORIDA DEPARTMENT OF ENVIRONMENTAL PROTECTION

Division of Water Restoration Assistance

FY 2018-2028 Long Range Budget Plan

Southeast Atlantic Coast (in thousands of dollars)

<b>Southern Palm Beaches - Palm Beach County R170 to Palm Beach/Broward County Line</b>																					
<b>City of Delray Beach</b>																					
<b>Delray Beach Segment/ Palm Beach County Shore Protection Project (R175-R188)</b>																					
Project	Federal FY 18/19	State FY 18/19	Local FY 18/19	Federal FY 19/20	State FY 19/20	Local FY 19/20	Federal FY 20/21	State FY 20/21	Local FY 20/21	Federal FY 21/22	State FY 21/22	Local FY 21/22	Federal FY 22/23	State FY 22/23	Local FY 22/23	TOTAL	FY 23/24	FY 24/25	FY 25/26	FY 26/27	FY 27/28
Feasibility	0.0	0.0	0.0	0.0	0.0	0.0	0.0	0.0	0.0	0.0	0.0	0.0	0.0	0.0	0.0	0.0					
Design	704.1	272.9	273.0	56.3	21.8	21.8	0.0	0.0	0.0	0.0	0.0	0.0	0.0	0.0	0.0	1,349.9					
Construction	0.0	0.0	0.0	14.0	5.5	5.5	6,448.7	2,499.6	2,499.6	0.0	0.0	0.0	0.0	0.0	0.0	11,472.9					
Monitoring	69.1	26.8	26.8	71.2	27.6	27.6	73.3	28.5	28.5	75.5	29.3	29.3	77.8	30.2	30.1	651.6	M	M	M	M	M
<b>Subtotal</b>	<b>773.2</b>	<b>299.7</b>	<b>299.8</b>	<b>141.5</b>	<b>54.9</b>	<b>54.9</b>	<b>6,522.0</b>	<b>2,528.1</b>	<b>2,528.1</b>	<b>75.5</b>	<b>29.3</b>	<b>29.3</b>	<b>77.8</b>	<b>30.2</b>	<b>30.1</b>	<b>13,474.4</b>					
<b>City of Boca Raton</b>																					
<b>North Boca Raton Segment/ Palm Beach County Shore Protection Project (R205-R212)</b>																					
Project	Federal FY 18/19	State FY 18/19	Local FY 18/19	Federal FY 19/20	State FY 19/20	Local FY 19/20	Federal FY 20/21	State FY 20/21	Local FY 20/21	Federal FY 21/22	State FY 21/22	Local FY 21/22	Federal FY 22/23	State FY 22/23	Local FY 22/23	TOTAL	FY 23/24	FY 24/25	FY 25/26	FY 26/27	FY 27/28
Feasibility	0.0	0.0	0.0	0.0	0.0	0.0	0.0	0.0	0.0	0.0	0.0	0.0	0.0	0.0	0.0	0.0					
Design	34.5	12.7	12.8	345.2	127.4	127.4	46.0	17.0	17.0	69.0	25.5	25.5	115.1	42.5	42.4	1,060.0	D				
Construction	0.0	0.0	0.0	0.0	0.0	0.0	0.0	0.0	0.0	0.0	0.0	0.0	0.0	0.0	0.0	0.0					
Monitoring	0.0	0.0	0.0	0.0	57.5	57.5	0.0	0.0	0.0	0.0	62.5	62.5	0.0	0.0	0.0	240.0		M	M	M	M
<b>Subtotal</b>	<b>34.5</b>	<b>12.7</b>	<b>12.8</b>	<b>345.2</b>	<b>184.9</b>	<b>184.9</b>	<b>46.0</b>	<b>17.0</b>	<b>17.0</b>	<b>69.0</b>	<b>88.0</b>	<b>88.0</b>	<b>115.1</b>	<b>42.5</b>	<b>42.4</b>	<b>1,300.0</b>					
<b>City of Boca Raton</b>																					
<b>Central Boca Raton Beach Nourishment (R216-R222.9)</b>																					
Project	Federal FY 18/19	State FY 18/19	Local FY 18/19	Federal FY 19/20	State FY 19/20	Local FY 19/20	Federal FY 20/21	State FY 20/21	Local FY 20/21	Federal FY 21/22	State FY 21/22	Local FY 21/22	Federal FY 22/23	State FY 22/23	Local FY 22/23	TOTAL	FY 23/24	FY 24/25	FY 25/26	FY 26/27	FY 27/28
Feasibility	0.0	0.0	0.0	0.0	0.0	0.0	0.0	0.0	0.0	0.0	0.0	0.0	0.0	0.0	0.0	0.0					
Design	0.0	0.0	0.0	0.0	0.0	0.0	0.0	16.9	23.1	0.0	16.9	23.1	0.0	16.9	23.1	120.0	D				
Construction	0.0	0.0	0.0	0.0	0.0	0.0	0.0	0.0	0.0	0.0	0.0	0.0	0.0	0.0	0.0	0.0			C		
Monitoring	0.0	14.8	20.2	0.0	26.5	36.0	0.0	0.0	0.0	0.0	30.7	41.8	0.0	0.0	0.0	170.0		M	M	M	M
<b>Subtotal</b>	<b>0.0</b>	<b>14.8</b>	<b>20.2</b>	<b>0.0</b>	<b>26.5</b>	<b>36.0</b>	<b>0.0</b>	<b>16.9</b>	<b>23.1</b>	<b>0.0</b>	<b>47.6</b>	<b>64.9</b>	<b>0.0</b>	<b>16.9</b>	<b>23.1</b>	<b>290.0</b>					
<b>City of Boca Raton</b>																					
<b>South Boca Raton Beach Nourishment (R223.3-R227.9)</b>																					
Project	Federal FY 18/19	State FY 18/19	Local FY 18/19	Federal FY 19/20	State FY 19/20	Local FY 19/20	Federal FY 20/21	State FY 20/21	Local FY 20/21	Federal FY 21/22	State FY 21/22	Local FY 21/22	Federal FY 22/23	State FY 22/23	Local FY 22/23	TOTAL	FY 23/24	FY 24/25	FY 25/26	FY 26/27	FY 27/28
Feasibility	0.0	0.0	0.0	0.0	0.0	0.0	0.0	0.0	0.0	0.0	0.0	0.0	0.0	0.0	0.0	0.0					
Design	0.0	19.3	30.7	0.0	0.0	0.0	0.0	13.5	21.5	0.0	34.8	55.2	0.0	0.0	0.0	175.0			D	D	
Construction	0.0	940.7	1,493.3	0.0	0.0	0.0	0.0	0.0	0.0	0.0	0.0	0.0	0.0	3,903.7	6,196.4	12,534.1					
Monitoring	0.0	0.0	0.0	0.0	58.0	92.0	0.0	0.0	0.0	0.0	61.8	98.2	0.0	63.8	101.2	475.0	M			M	M
<b>Subtotal</b>	<b>0.0</b>	<b>960.0</b>	<b>1,524.0</b>	<b>0.0</b>	<b>58.0</b>	<b>92.0</b>	<b>0.0</b>	<b>13.5</b>	<b>21.5</b>	<b>0.0</b>	<b>96.6</b>	<b>153.4</b>	<b>0.0</b>	<b>3,967.5</b>	<b>6,297.6</b>	<b>13,184.1</b>					
<b>City of Boca Raton</b>																					
<b>Boca Raton IMP Implementation (R223-R226)</b>																					
Project	Federal FY 18/19	State FY 18/19	Local FY 18/19	Federal FY 19/20	State FY 19/20	Local FY 19/20	Federal FY 20/21	State FY 20/21	Local FY 20/21	Federal FY 21/22	State FY 21/22	Local FY 21/22	Federal FY 22/23	State FY 22/23	Local FY 22/23	TOTAL	FY 23/24	FY 24/25	FY 25/26	FY 26/27	FY 27/28
Feasibility	0.0	0.0	0.0	0.0	0.0	0.0	0.0	0.0	0.0	0.0	0.0	0.0	0.0	0.0	0.0	0.0					
Design	0.0	11.2	3.8	0.0	0.0	0.0	0.0	0.0	0.0	0.0	18.8	6.2	0.0	0.0	0.0	40.0			D		
Construction	0.0	105.0	35.0	0.0	109.2	36.4	0.0	113.6	37.8	0.0	118.1	39.4	0.0	122.9	40.9	758.3	C	C	C	C	C
Monitoring	0.0	16.4	5.4	0.0	16.9	5.6	0.0	17.4	5.8	0.0	17.9	6.0	0.0	18.5	6.1	116.0	M	M	M	M	M
<b>Subtotal</b>	<b>0.0</b>	<b>132.6</b>	<b>44.2</b>	<b>0.0</b>	<b>126.1</b>	<b>42.0</b>	<b>0.0</b>	<b>131.0</b>	<b>43.6</b>	<b>0.0</b>	<b>154.8</b>	<b>51.6</b>	<b>0.0</b>	<b>141.4</b>	<b>47.0</b>	<b>914.3</b>					
<b>Broward/Dade Beaches - Palm Beach/Broward County Line to Government Cut</b>																					
<b>City of Deerfield Beach</b>																					
<b>Segment I/ Broward County Shore Protection Project (R1-R25) - No information available.</b>																					
Project	Federal FY 18/19	State FY 18/19	Local FY 18/19	Federal FY 19/20	State FY 19/20	Local FY 19/20	Federal FY 20/21	State FY 20/21	Local FY 20/21	Federal FY 21/22	State FY 21/22	Local FY 21/22	Federal FY 22/23	State FY 22/23	Local FY 22/23	TOTAL	FY 23/24	FY 24/25	FY 25/26	FY 26/27	FY 27/28
Feasibility	0.0	0.0	0.0	0.0	0.0	0.0	0.0	0.0	0.0	0.0	0.0	0.0	0.0	0.0	0.0	0.0					
Design	0.0	0.0	0.0	0.0	0.0	0.0	0.0	0.0	0.0	0.0	0.0	0.0	0.0	0.0	0.0	0.0					
Construction	0.0	0.0	0.0	0.0	0.0	0.0	0.0	0.0	0.0	0.0	0.0	0.0	0.0	0.0	0.0	0.0					
Monitoring	0.0	0.0	0.0	0.0	0.0	0.0	0.0	0.0	0.0	0.0	0.0	0.0	0.0	0.0	0.0	0.0					
<b>Subtotal</b>	<b>0.0</b>	<b>0.0</b>	<b>0.0</b>	<b>0.0</b>	<b>0.0</b>	<b>0.0</b>	<b>0.0</b>	<b>0.0</b>	<b>0.0</b>	<b>0.0</b>	<b>0.0</b>	<b>0.0</b>	<b>0.0</b>	<b>0.0</b>	<b>0.0</b>	<b>0.0</b>					

FLORIDA DEPARTMENT OF ENVIRONMENTAL PROTECTION

Division of Water Restoration Assistance

FY 2018-2028 Long Range Budget Plan

Southeast Atlantic Coast (in thousands of dollars)

Town of Hillsboro Beach																						
Hillsboro Beach Nourishment (R6-R12)																						
Project	Federal FY 18/19	State FY 18/19	Local FY 18/19	Federal FY 19/20	State FY 19/20	Local FY 19/20	Federal FY 20/21	State FY 20/21	Local FY 20/21	Federal FY 21/22	State FY 21/22	Local FY 21/22	Federal FY 22/23	State FY 22/23	Local FY 22/23	TOTAL	FY 23/24	FY 24/25	FY 25/26	FY 26/27	FY 27/28	
Feasibility	0.0	0.0	0.0	0.0	0.0	0.0	0.0	0.0	0.0	0.0	0.0	0.0	0.0	0.0	0.0	0.0	0.0					
Design	60.0	0.5	19.5	0.0	0.0	0.0	0.0	0.0	0.0	0.0	0.0	0.0	0.0	0.0	0.0	0.0	0.0					
Construction	1,242.1	15.3	598.7	0.0	0.0	0.0	0.0	0.0	0.0	0.0	0.0	0.0	0.0	0.0	0.0	0.0	0.0					
Monitoring	0.0	0.0	0.0	0.0	0.0	0.0	41.7	0.4	13.7	42.5	0.4	13.8	0.0	0.0	0.0	0.0	0.0					
<b>Subtotal</b>	<b>1,302.1</b>	<b>15.8</b>	<b>618.2</b>	<b>0.0</b>	<b>0.0</b>	<b>0.0</b>	<b>41.7</b>	<b>0.4</b>	<b>13.7</b>	<b>42.5</b>	<b>0.4</b>	<b>13.8</b>	<b>0.0</b>	<b>0.0</b>	<b>0.0</b>	<b>0.0</b>	<b>0.0</b>					
Broward County																						
Segment II/ Broward County Shore Protection Project (R25-R72)																						
Project	Federal FY 18/19	State FY 18/19	Local FY 18/19	Federal FY 19/20	State FY 19/20	Local FY 19/20	Federal FY 20/21	State FY 20/21	Local FY 20/21	Federal FY 21/22	State FY 21/22	Local FY 21/22	Federal FY 22/23	State FY 22/23	Local FY 22/23	TOTAL	FY 23/24	FY 24/25	FY 25/26	FY 26/27	FY 27/28	
Feasibility	0.0	0.0	0.0	0.0	0.0	0.0	0.0	0.0	0.0	0.0	0.0	0.0	0.0	0.0	0.0	0.0	0.0					
Design	0.0	0.0	0.0	0.0	0.0	0.0	0.0	0.0	0.0	0.0	0.0	0.0	0.0	0.0	0.0	0.0	0.0					
Construction	0.0	0.0	0.0	0.0	0.0	0.0	0.0	2,036.0	2,964.0	0.0	0.0	0.0	0.0	0.0	0.0	0.0	0.0					
Monitoring	244.5	81.1	118.1	218.9	72.6	105.7	222.9	73.9	107.7	223.6	74.2	108.0	223.6	74.2	108.0	0.0	0.0					
<b>Subtotal</b>	<b>244.5</b>	<b>81.1</b>	<b>118.1</b>	<b>218.9</b>	<b>72.6</b>	<b>105.7</b>	<b>222.9</b>	<b>2,109.9</b>	<b>3,071.7</b>	<b>223.6</b>	<b>74.2</b>	<b>108.0</b>	<b>223.6</b>	<b>74.2</b>	<b>108.0</b>	<b>0.0</b>	<b>0.0</b>					
City of Pompano Beach																						
Pompano Beach Dune Construction (R32-R35.1) - No information available.																						
Feasibility	0.0	0.0	0.0	0.0	0.0	0.0	0.0	0.0	0.0	0.0	0.0	0.0	0.0	0.0	0.0	0.0	0.0					
Design	0.0	0.0	0.0	0.0	0.0	0.0	0.0	0.0	0.0	0.0	0.0	0.0	0.0	0.0	0.0	0.0	0.0					
Construction	0.0	0.0	0.0	0.0	0.0	0.0	0.0	0.0	0.0	0.0	0.0	0.0	0.0	0.0	0.0	0.0	0.0					
Monitoring	0.0	0.0	0.0	0.0	0.0	0.0	0.0	0.0	0.0	0.0	0.0	0.0	0.0	0.0	0.0	0.0	0.0					
<b>Subtotal</b>	<b>0.0</b>	<b>0.0</b>	<b>0.0</b>	<b>0.0</b>	<b>0.0</b>	<b>0.0</b>	<b>0.0</b>	<b>0.0</b>	<b>0.0</b>	<b>0.0</b>	<b>0.0</b>	<b>0.0</b>	<b>0.0</b>	<b>0.0</b>	<b>0.0</b>	<b>0.0</b>	<b>0.0</b>					
Broward County																						
Port Everglades IMP Implementation (R85-R86)																						
Project	Federal FY 18/19	State FY 18/19	Local FY 18/19	Federal FY 19/20	State FY 19/20	Local FY 19/20	Federal FY 20/21	State FY 20/21	Local FY 20/21	Federal FY 21/22	State FY 21/22	Local FY 21/22	Federal FY 22/23	State FY 22/23	Local FY 22/23	TOTAL	FY 23/24	FY 24/25	FY 25/26	FY 26/27	FY 27/28	
Feasibility	0.0	0.0	0.0	0.0	0.0	0.0	0.0	0.0	0.0	0.0	0.0	0.0	0.0	0.0	0.0	0.0	0.0					
Design	0.0	0.0	0.0	0.0	0.0	0.0	0.0	0.0	0.0	0.0	0.0	0.0	0.0	0.0	0.0	0.0	0.0					
Construction	0.0	5,297.7	1,765.9	0.0	0.0	0.0	0.0	0.0	0.0	0.0	3,525.0	1,175.0	0.0	0.0	0.0	0.0	0.0			C		C
Monitoring	0.0	0.0	0.0	0.0	135.2	45.0	0.0	139.1	46.4	0.0	143.0	47.7	0.0	147.0	49.0	0.0	0.0	M	M	M	M	M
<b>Subtotal</b>	<b>0.0</b>	<b>5,297.7</b>	<b>1,765.9</b>	<b>0.0</b>	<b>135.2</b>	<b>45.0</b>	<b>0.0</b>	<b>139.1</b>	<b>46.4</b>	<b>0.0</b>	<b>3,668.0</b>	<b>1,222.7</b>	<b>0.0</b>	<b>147.0</b>	<b>49.0</b>	<b>0.0</b>	<b>0.0</b>					
Broward County																						
Segment III/ Broward County Shore Protection Project (R86-R128)																						
Project	Federal FY 18/19	State FY 18/19	Local FY 18/19	Federal FY 19/20	State FY 19/20	Local FY 19/20	Federal FY 20/21	State FY 20/21	Local FY 20/21	Federal FY 21/22	State FY 21/22	Local FY 21/22	Federal FY 22/23	State FY 22/23	Local FY 22/23	TOTAL	FY 23/24	FY 24/25	FY 25/26	FY 26/27	FY 27/28	
Feasibility	0.0	0.0	0.0	0.0	0.0	0.0	0.0	0.0	0.0	0.0	0.0	0.0	0.0	0.0	0.0	0.0	0.0					
Design	0.0	0.0	0.0	0.0	0.0	0.0	0.0	0.0	0.0	0.0	0.0	0.0	0.0	0.0	0.0	0.0	0.0					
Construction	0.0	0.0	0.0	14,058.3	4,994.7	4,994.7	0.0	0.0	0.0	0.0	0.0	0.0	0.0	0.0	0.0	0.0	0.0					
Monitoring	0.0	0.0	0.0	637.2	226.4	226.4	442.0	157.0	157.0	442.0	157.0	157.0	0.0	0.0	0.0	0.0	0.0			M		M
<b>Subtotal</b>	<b>0.0</b>	<b>0.0</b>	<b>0.0</b>	<b>14,695.5</b>	<b>5,221.1</b>	<b>5,221.1</b>	<b>442.0</b>	<b>157.0</b>	<b>157.0</b>	<b>442.0</b>	<b>157.0</b>	<b>157.0</b>	<b>0.0</b>	<b>0.0</b>	<b>0.0</b>	<b>0.0</b>	<b>0.0</b>					
City of Hollywood																						
Hollywood Beach Nourishment (R120-R123) - No information available.																						
Feasibility	0.0	0.0	0.0	0.0	0.0	0.0	0.0	0.0	0.0	0.0	0.0	0.0	0.0	0.0	0.0	0.0	0.0					
Design	0.0	0.0	0.0	0.0	0.0	0.0	0.0	0.0	0.0	0.0	0.0	0.0	0.0	0.0	0.0	0.0	0.0					
Construction	0.0	0.0	0.0	0.0	0.0	0.0	0.0	0.0	0.0	0.0	0.0	0.0	0.0	0.0	0.0	0.0	0.0					
Monitoring	0.0	0.0	0.0	0.0	0.0	0.0	0.0	0.0	0.0	0.0	0.0	0.0	0.0	0.0	0.0	0.0	0.0					
<b>Subtotal</b>	<b>0.0</b>	<b>0.0</b>	<b>0.0</b>	<b>0.0</b>	<b>0.0</b>	<b>0.0</b>	<b>0.0</b>	<b>0.0</b>	<b>0.0</b>	<b>0.0</b>	<b>0.0</b>	<b>0.0</b>	<b>0.0</b>	<b>0.0</b>	<b>0.0</b>	<b>0.0</b>	<b>0.0</b>					
City of Hallandale																						
Hallandale Beach Nourishment (R124-R128) - No information available.																						
Feasibility	0.0	0.0	0.0	0.0	0.0	0.0	0.0	0.0	0.0	0.0	0.0	0.0	0.0	0.0	0.0	0.0	0.0					
Design	0.0	0.0	0.0	0.0	0.0	0.0	0.0	0.0	0.0	0.0	0.0	0.0	0.0	0.0	0.0	0.0	0.0					
Construction	0.0	0.0	0.0	0.0	0.0	0.0	0.0	0.0	0.0	0.0	0.0	0.0	0.0	0.0	0.0	0.0	0.0					
Monitoring	0.0	0.0	0.0	0.0	0.0	0.0	0.0	0.0	0.0	0.0	0.0	0.0	0.0	0.0	0.0	0.0	0.0					
<b>Subtotal</b>	<b>0.0</b>	<b>0.0</b>	<b>0.0</b>	<b>0.0</b>	<b>0.0</b>	<b>0.0</b>	<b>0.0</b>	<b>0.0</b>	<b>0.0</b>	<b>0.0</b>	<b>0.0</b>	<b>0.0</b>	<b>0.0</b>	<b>0.0</b>	<b>0.0</b>	<b>0.0</b>	<b>0.0</b>					

FLORIDA DEPARTMENT OF ENVIRONMENTAL PROTECTION

Division of Water Restoration Assistance

FY 2018-2028 Long Range Budget Plan

Southeast Atlantic Coast (in thousands of dollars)

Miami-Dade County																						
Dade County Shore Protection Project (R6-R74)																						
Project	Federal FY 18/19	State FY 18/19	Local FY 18/19	Federal FY 19/20	State FY 19/20	Local FY 19/20	Federal FY 20/21	State FY 20/21	Local FY 20/21	Federal FY 21/22	State FY 21/22	Local FY 21/22	Federal FY 22/23	State FY 22/23	Local FY 22/23	TOTAL	FY 23/24	FY 24/25	FY 25/26	FY 26/27	FY 27/28	
Feasibility	0.0	0.0	0.0	0.0	0.0	0.0	0.0	0.0	0.0	0.0	0.0	0.0	0.0	0.0	0.0	0.0	0.0					
Design	0.0	0.0	0.0	0.0	0.0	0.0	0.0	0.0	0.0	0.0	0.0	0.0	0.0	0.0	0.0	0.0	0.0					
Construction	4,528.0	1,803.5	1,803.5	0.0	200.0	200.0	0.0	0.0	0.0	11,320.0	4,340.0	4,340.0	0.0	0.0	0.0	28,535.0		C			C	
Monitoring	0.0	0.0	0.0	0.0	67.5	67.5	0.0	67.5	67.5	0.0	67.5	67.5	0.0	67.5	67.5	540.0	M	M	M	M	M	
<b>Subtotal</b>	<b>4,528.0</b>	<b>1,803.5</b>	<b>1,803.5</b>	<b>0.0</b>	<b>267.5</b>	<b>267.5</b>	<b>0.0</b>	<b>67.5</b>	<b>67.5</b>	<b>11,320.0</b>	<b>4,407.5</b>	<b>4,407.5</b>	<b>0.0</b>	<b>67.5</b>	<b>67.5</b>	<b>29,075.0</b>						
Miami-Dade County																						
Bakers-Haulover Inlet IMP Study (R26-R27)																						
Project	Federal FY 18/19	State FY 18/19	Local FY 18/19	Federal FY 19/20	State FY 19/20	Local FY 19/20	Federal FY 20/21	State FY 20/21	Local FY 20/21	Federal FY 21/22	State FY 21/22	Local FY 21/22	Federal FY 22/23	State FY 22/23	Local FY 22/23	TOTAL	FY 23/24	FY 24/25	FY 25/26	FY 26/27	FY 27/28	
Feasibility	0.0	0.0	0.0	0.0	0.0	0.0	0.0	0.0	0.0	0.0	0.0	0.0	0.0	0.0	0.0	0.0	0.0					
Design	0.0	0.0	0.0	0.0	0.0	0.0	0.0	0.0	0.0	0.0	0.0	0.0	0.0	0.0	0.0	0.0	0.0					
Construction	0.0	0.0	0.0	0.0	0.0	0.0	0.0	0.0	0.0	0.0	383.3	127.7	0.0	0.0	0.0	511.0				C		
Monitoring	0.0	0.0	0.0	0.0	0.0	0.0	0.0	0.0	0.0	0.0	0.0	0.0	0.0	0.0	0.0	0.0	0.0					
<b>Subtotal</b>	<b>0.0</b>	<b>0.0</b>	<b>0.0</b>	<b>0.0</b>	<b>0.0</b>	<b>0.0</b>	<b>0.0</b>	<b>0.0</b>	<b>0.0</b>	<b>0.0</b>	<b>383.3</b>	<b>127.7</b>	<b>0.0</b>	<b>0.0</b>	<b>0.0</b>	<b>511.0</b>						
Southern Barriers - Government Cut to Cape Florida																						
Village of Key Biscayne																						
Key Biscayne Beach Nourishment (R101-R108)																						
Project	Federal FY 18/19	State FY 18/19	Local FY 18/19	Federal FY 19/20	State FY 19/20	Local FY 19/20	Federal FY 20/21	State FY 20/21	Local FY 20/21	Federal FY 21/22	State FY 21/22	Local FY 21/22	Federal FY 22/23	State FY 22/23	Local FY 22/23	TOTAL	FY 23/24	FY 24/25	FY 25/26	FY 26/27	FY 27/28	
Feasibility	0.0	25.3	27.0	0.0	0.0	0.0	0.0	0.0	0.0	0.0	0.0	0.0	0.0	0.0	0.0	52.3						
Design	0.0	25.1	26.6	0.0	0.0	0.0	0.0	0.0	0.0	0.0	0.0	0.0	0.0	0.0	0.0	51.7						
Construction	0.0	860.6	913.8	0.0	0.0	0.0	0.0	0.0	0.0	0.0	0.0	0.0	0.0	0.0	0.0	1,774.4						
Monitoring	0.0	0.0	0.0	0.0	37.3	39.7	0.0	37.3	39.7	0.0	0.0	0.0	0.0	0.0	0.0	154.1						
<b>Subtotal</b>	<b>0.0</b>	<b>911.0</b>	<b>967.4</b>	<b>0.0</b>	<b>37.3</b>	<b>39.7</b>	<b>0.0</b>	<b>37.3</b>	<b>39.7</b>	<b>0.0</b>	<b>0.0</b>	<b>0.0</b>	<b>0.0</b>	<b>0.0</b>	<b>0.0</b>	<b>2,032.5</b>						
<b>TOTAL</b>	<b>7,152.1</b>	<b>34,140.7</b>	<b>36,464.2</b>	<b>15,449.8</b>	<b>11,725.3</b>	<b>12,128.9</b>	<b>7,323.3</b>	<b>7,366.1</b>	<b>7,942.2</b>	<b>20,451.6</b>	<b>23,710.9</b>	<b>24,379.7</b>	<b>416.5</b>	<b>6,412.5</b>	<b>8,723.4</b>	<b>223,620.5</b>						
FY TOTAL (Federal, State, Local)			<b>77,757.0</b>			<b>39,304.0</b>			<b>22,631.5</b>			<b>68,542.1</b>			<b>15,552.4</b>	<b>223,787.1</b>						



FLORIDA DEPARTMENT OF ENVIRONMENTAL PROTECTION

Division of Water Restoration Assistance

FY 2018-2028 Long Range Budget Plan

Florida Keys (in thousands of dollars)

<b>Middle Keys</b>																					
<b>City of Marathon</b>																					
<b>Marathon Beaches Nourishment</b>																					
Project	Federal FY 18/19	State FY 18/19	Local FY 18/19	Federal FY 19/20	State FY 19/20	Local FY 19/20	Federal FY 20/21	State FY 20/21	Local FY 20/21	Federal FY 21/22	State FY 21/22	Local FY 21/22	Federal FY 22/23	State FY 22/23	Local FY 22/23	TOTAL	FY 23/24	FY 24/25	FY 25/26	FY 26/27	FY 27/28
Feasibility	0.0	0.0	0.0	0.0	0.0	0.0	0.0	0.0	0.0	0.0	0.0	0.0	0.0	0.0	0.0	0.0					
Design	0.0	0.0	0.0	0.0	0.0	0.0	0.0	0.0	0.0	0.0	0.0	0.0	0.0	0.0	0.0	0.0					
Construction	0.0	0.0	0.0	0.0	5.0	5.0	0.0	5.0	5.0	0.0	5.0	5.0	0.0	5.0	5.0	40.0	C	C	C	C	C
Monitoring	0.0	0.0	0.0	0.0	10.0	10.0	0.0	10.0	10.0	0.0	10.0	10.0	0.0	10.0	10.0	80.0	M	M	M	M	M
<b>Subtotal</b>	<b>0.0</b>	<b>0.0</b>	<b>0.0</b>	<b>0.0</b>	<b>15.0</b>	<b>15.0</b>	<b>0.0</b>	<b>15.0</b>	<b>15.0</b>	<b>0.0</b>	<b>15.0</b>	<b>15.0</b>	<b>0.0</b>	<b>15.0</b>	<b>15.0</b>	<b>120.0</b>					
<b>Lower Keys - Pigeon Key to Key West Ship Channel</b>																					
<b>City of Key West</b>																					
<b>Rest Beach Nourishment</b>																					
Project	Federal FY 18/19	State FY 18/19	Local FY 18/19	Federal FY 19/20	State FY 19/20	Local FY 19/20	Federal FY 20/21	State FY 20/21	Local FY 20/21	Federal FY 21/22	State FY 21/22	Local FY 21/22	Federal FY 22/23	State FY 22/23	Local FY 22/23	TOTAL	FY 23/24	FY 24/25	FY 25/26	FY 26/27	FY 27/28
Feasibility	0.0	0.0	0.0	0.0	0.0	0.0	0.0	0.0	0.0	0.0	0.0	0.0	0.0	0.0	0.0	0.0					
Design	0.0	0.0	0.0	0.0	0.0	0.0	0.0	0.0	0.0	0.0	0.0	0.0	0.0	0.0	0.0	0.0					
Construction	0.0	0.0	0.0	0.0	0.0	0.0	0.0	0.0	0.0	0.0	0.0	0.0	0.0	0.0	0.0	0.0					
Monitoring	0.0	0.0	0.0	0.0	15.2	15.2	0.0	15.2	15.2	0.0	15.2	15.2	0.0	15.2	15.2	121.6		M		M	
<b>Subtotal</b>	<b>0.0</b>	<b>0.0</b>	<b>0.0</b>	<b>0.0</b>	<b>15.2</b>	<b>15.2</b>	<b>0.0</b>	<b>15.2</b>	<b>15.2</b>	<b>0.0</b>	<b>15.2</b>	<b>15.2</b>	<b>0.0</b>	<b>15.2</b>	<b>15.2</b>	<b>121.6</b>					
<b>Monroe County</b>																					
<b>Higgs Beach Restoration</b>																					
Project	Federal FY 18/19	State FY 18/19	Local FY 18/19	Federal FY 19/20	State FY 19/20	Local FY 19/20	Federal FY 20/21	State FY 20/21	Local FY 20/21	Federal FY 21/22	State FY 21/22	Local FY 21/22	Federal FY 22/23	State FY 22/23	Local FY 22/23	TOTAL	FY 23/24	FY 24/25	FY 25/26	FY 26/27	FY 27/28
Feasibility	0.0	0.0	0.0	0.0	0.0	0.0	0.0	0.0	0.0	0.0	0.0	0.0	0.0	0.0	0.0	0.0					
Design	0.0	0.0	0.0	0.0	0.0	0.0	0.0	0.0	0.0	0.0	0.0	0.0	0.0	0.0	0.0	0.0					
Construction	0.0	0.0	0.0	0.0	0.0	0.0	0.0	0.0	0.0	0.0	0.0	0.0	0.0	0.0	0.0	0.0					
Monitoring	0.0	0.0	0.0	0.0	12.5	12.5	0.0	12.5	12.5	0.0	12.5	12.5	0.0	0.0	0.0	75.0					
<b>Subtotal</b>	<b>0.0</b>	<b>0.0</b>	<b>0.0</b>	<b>0.0</b>	<b>12.5</b>	<b>12.5</b>	<b>0.0</b>	<b>12.5</b>	<b>12.5</b>	<b>0.0</b>	<b>12.5</b>	<b>12.5</b>	<b>0.0</b>	<b>0.0</b>	<b>0.0</b>	<b>75.0</b>					
<b>City of Key West</b>																					
<b>Smathers Beach Nourishment</b>																					
Project	Federal FY 18/19	State FY 18/19	Local FY 18/19	Federal FY 19/20	State FY 19/20	Local FY 19/20	Federal FY 20/21	State FY 20/21	Local FY 20/21	Federal FY 21/22	State FY 21/22	Local FY 21/22	Federal FY 22/23	State FY 22/23	Local FY 22/23	TOTAL	FY 23/24	FY 24/25	FY 25/26	FY 26/27	FY 27/28
Feasibility	0.0	0.0	0.0	0.0	0.0	0.0	0.0	0.0	0.0	0.0	0.0	0.0	0.0	0.0	0.0	0.0					
Design	0.0	0.0	0.0	0.0	0.0	0.0	0.0	0.0	0.0	0.0	0.0	0.0	0.0	0.0	0.0	0.0					
Construction	0.0	0.0	0.0	0.0	0.0	0.0	0.0	350.0	350.0	0.0	0.0	0.0	0.0	0.0	0.0	700.0					
Monitoring	0.0	0.0	0.0	0.0	0.0	0.0	0.0	0.0	0.0	0.0	100.0	100.0	0.0	0.0	0.0	200.0					
<b>Subtotal</b>	<b>0.0</b>	<b>0.0</b>	<b>0.0</b>	<b>0.0</b>	<b>0.0</b>	<b>0.0</b>	<b>0.0</b>	<b>350.0</b>	<b>350.0</b>	<b>0.0</b>	<b>100.0</b>	<b>100.0</b>	<b>0.0</b>	<b>0.0</b>	<b>0.0</b>	<b>900.0</b>					
<b>DEP, Division of Recreation and Parks</b>																					
<b>Fort Zachary Taylor Beach Restoration - No information available.</b>																					
Project	Federal FY 18/19	State FY 18/19	Local FY 18/19	Federal FY 19/20	State FY 19/20	Local FY 19/20	Federal FY 20/21	State FY 20/21	Local FY 20/21	Federal FY 21/22	State FY 21/22	Local FY 21/22	Federal FY 22/23	State FY 22/23	Local FY 22/23	TOTAL	FY 23/24	FY 24/25	FY 25/26	FY 26/27	FY 27/28
Feasibility	0.0	0.0	0.0	0.0	0.0	0.0	0.0	0.0	0.0	0.0	0.0	0.0	0.0	0.0	0.0	0.0					
Design	0.0	0.0	0.0	0.0	0.0	0.0	0.0	0.0	0.0	0.0	0.0	0.0	0.0	0.0	0.0	0.0					
Construction	0.0	0.0	0.0	0.0	0.0	0.0	0.0	0.0	0.0	0.0	0.0	0.0	0.0	0.0	0.0	0.0					
Monitoring	0.0	0.0	0.0	0.0	0.0	0.0	0.0	0.0	0.0	0.0	0.0	0.0	0.0	0.0	0.0	0.0					
<b>Subtotal</b>	<b>0.0</b>	<b>0.0</b>	<b>0.0</b>	<b>0.0</b>	<b>0.0</b>	<b>0.0</b>	<b>0.0</b>	<b>0.0</b>	<b>0.0</b>	<b>0.0</b>	<b>0.0</b>	<b>0.0</b>	<b>0.0</b>	<b>0.0</b>	<b>0.0</b>	<b>0.0</b>					
<b>TOTAL</b>	<b>0.0</b>	<b>0.0</b>	<b>0.0</b>	<b>0.0</b>	<b>42.7</b>	<b>42.7</b>	<b>0.0</b>	<b>392.7</b>	<b>392.7</b>	<b>0.0</b>	<b>142.7</b>	<b>142.7</b>	<b>0.0</b>	<b>30.2</b>	<b>30.2</b>	<b>1,216.6</b>					
FY TOTAL (Federal, State, Local)			<b>0.0</b>			<b>85.4</b>			<b>785.4</b>			<b>285.4</b>			<b>60.4</b>	<b>1,216.6</b>					

FLORIDA DEPARTMENT OF ENVIRONMENTAL PROTECTION  
 Division of Water Restoration Assistance  
 FY 2018-2028 Long Range Budget Plan

Southwest Gulf Coast (in thousands of dollars)

<b>Pinellas Barriers (South Reach) - Anclote Key to Southwest Channel</b>																					
Pinellas County and DEP, Division of Recreation and Parks Honeymoon Island Beach Restoration (R6-R12) - No information available.																					
Project	Federal FY 18/19	State FY 18/19	Local FY 18/19	Federal FY 19/20	State FY 19/20	Local FY 19/20	Federal FY 20/21	State FY 20/21	Local FY 20/21	Federal FY 21/22	State FY 21/22	Local FY 21/22	Federal FY 22/23	State FY 22/23	Local FY 22/23	TOTAL	FY 23/24	FY 24/25	FY 25/26	FY 26/27	FY 27/28
Feasibility	0.0	0.0	0.0	0.0	0.0	0.0	0.0	0.0	0.0	0.0	0.0	0.0	0.0	0.0	0.0	0.0					
Design	0.0	0.0	0.0	0.0	0.0	0.0	0.0	0.0	0.0	0.0	0.0	0.0	0.0	0.0	0.0	0.0					
Construction	0.0	0.0	0.0	0.0	0.0	0.0	0.0	0.0	0.0	0.0	0.0	0.0	0.0	0.0	0.0	0.0					
Monitoring	0.0	0.0	0.0	0.0	0.0	0.0	0.0	0.0	0.0	0.0	0.0	0.0	0.0	0.0	0.0	0.0					
<b>Subtotal</b>	<b>0.0</b>	<b>0.0</b>	<b>0.0</b>	<b>0.0</b>	<b>0.0</b>	<b>0.0</b>	<b>0.0</b>	<b>0.0</b>	<b>0.0</b>	<b>0.0</b>	<b>0.0</b>	<b>0.0</b>	<b>0.0</b>	<b>0.0</b>	<b>0.0</b>	<b>0.0</b>					
<b>Pinellas County</b>																					
<b>Sand Key Segment/ Pinellas County Shore Protection Project (R56-R66, R71-R108.5)</b>																					
Project	Federal FY 18/19	State FY 18/19	Local FY 18/19	Federal FY 19/20	State FY 19/20	Local FY 19/20	Federal FY 20/21	State FY 20/21	Local FY 20/21	Federal FY 21/22	State FY 21/22	Local FY 21/22	Federal FY 22/23	State FY 22/23	Local FY 22/23	TOTAL	FY 23/24	FY 24/25	FY 25/26	FY 26/27	FY 27/28
Feasibility	0.0	0.0	0.0	0.0	0.0	0.0	0.0	0.0	0.0	0.0	0.0	0.0	0.0	0.0	0.0	0.0					
Design	0.0	0.0	0.0	0.0	0.0	0.0	0.0	0.0	0.0	0.0	0.0	0.0	0.0	0.0	0.0	0.0			D		
Construction	0.0	0.0	0.0	0.0	0.0	0.0	0.0	0.0	0.0	0.0	0.0	0.0	0.0	0.0	0.0	0.0			C		
Monitoring	0.0	0.0	0.0	0.0	35.0	35.0	0.0	0.0	0.0	0.0	35.0	35.0	0.0	0.0	0.0	140.0	M			M	M
<b>Subtotal</b>	<b>0.0</b>	<b>0.0</b>	<b>0.0</b>	<b>0.0</b>	<b>35.0</b>	<b>35.0</b>	<b>0.0</b>	<b>0.0</b>	<b>0.0</b>	<b>0.0</b>	<b>35.0</b>	<b>35.0</b>	<b>0.0</b>	<b>0.0</b>	<b>0.0</b>	<b>140.0</b>					
<b>Pinellas County</b>																					
<b>Treasure Island Segment/ Pinellas County Shore Protection Project (R126-R128.2, R136-R141.4)</b>																					
Project	Federal FY 18/19	State FY 18/19	Local FY 18/19	Federal FY 19/20	State FY 19/20	Local FY 19/20	Federal FY 20/21	State FY 20/21	Local FY 20/21	Federal FY 21/22	State FY 21/22	Local FY 21/22	Federal FY 22/23	State FY 22/23	Local FY 22/23	TOTAL	FY 23/24	FY 24/25	FY 25/26	FY 26/27	FY 27/28
Feasibility	0.0	0.0	0.0	0.0	0.0	0.0	0.0	0.0	0.0	0.0	0.0	0.0	0.0	0.0	0.0	0.0					
Design	0.0	0.0	0.0	0.0	0.0	0.0	0.0	0.0	0.0	0.0	0.0	0.0	0.0	0.0	0.0	0.0					
Construction	0.0	0.0	0.0	0.0	0.0	0.0	0.0	0.0	0.0	6,960.0	2,520.0	2,520.0	0.0	0.0	0.0	12,000.0			C		
Monitoring	0.0	0.0	0.0	0.0	10.0	10.0	0.0	0.0	0.0	0.0	10.0	10.0	0.0	10.0	10.0	60.0	M	M		M	M
<b>Subtotal</b>	<b>0.0</b>	<b>0.0</b>	<b>0.0</b>	<b>0.0</b>	<b>10.0</b>	<b>10.0</b>	<b>0.0</b>	<b>0.0</b>	<b>0.0</b>	<b>6,960.0</b>	<b>2,530.0</b>	<b>2,530.0</b>	<b>0.0</b>	<b>10.0</b>	<b>10.0</b>	<b>12,060.0</b>					
<b>Pinellas County</b>																					
<b>Long Key Segment/ Pinellas County Shore Protection Project (Upham Structures and Long Key Federal Nourishment) (R144-R148, R160-R165)</b>																					
Project	Federal FY 18/19	State FY 18/19	Local FY 18/19	Federal FY 19/20	State FY 19/20	Local FY 19/20	Federal FY 20/21	State FY 20/21	Local FY 20/21	Federal FY 21/22	State FY 21/22	Local FY 21/22	Federal FY 22/23	State FY 22/23	Local FY 22/23	TOTAL	FY 23/24	FY 24/25	FY 25/26	FY 26/27	FY 27/28
Feasibility	0.0	0.0	0.0	0.0	0.0	0.0	0.0	0.0	0.0	0.0	0.0	0.0	0.0	0.0	0.0	0.0					
Design	0.0	0.0	0.0	0.0	0.0	0.0	0.0	0.0	0.0	0.0	0.0	0.0	0.0	0.0	0.0	0.0					
Construction	0.0	0.0	0.0	0.0	0.0	0.0	0.0	0.0	0.0	0.0	0.0	0.0	0.0	0.0	0.0	0.0					
Monitoring	0.0	0.0	0.0	0.0	0.0	0.0	0.0	24.0	24.0	0.0	0.0	0.0	0.0	24.0	24.0	96.0	M		M		M
<b>Subtotal</b>	<b>0.0</b>	<b>0.0</b>	<b>0.0</b>	<b>0.0</b>	<b>0.0</b>	<b>0.0</b>	<b>0.0</b>	<b>24.0</b>	<b>24.0</b>	<b>0.0</b>	<b>0.0</b>	<b>0.0</b>	<b>0.0</b>	<b>24.0</b>	<b>24.0</b>	<b>96.0</b>					
<b>Pinellas County</b>																					
<b>Pass-a-Grille Pass IMP Project (R166-R168) - No information available.</b>																					
Project	Federal FY 18/19	State FY 18/19	Local FY 18/19	Federal FY 19/20	State FY 19/20	Local FY 19/20	Federal FY 20/21	State FY 20/21	Local FY 20/21	Federal FY 21/22	State FY 21/22	Local FY 21/22	Federal FY 22/23	State FY 22/23	Local FY 22/23	TOTAL	FY 23/24	FY 24/25	FY 25/26	FY 26/27	FY 27/28
Feasibility	0.0	0.0	0.0	0.0	0.0	0.0	0.0	0.0	0.0	0.0	0.0	0.0	0.0	0.0	0.0	0.0					
Design	0.0	0.0	0.0	0.0	0.0	0.0	0.0	0.0	0.0	0.0	0.0	0.0	0.0	0.0	0.0	0.0					
Construction	0.0	0.0	0.0	0.0	0.0	0.0	0.0	0.0	0.0	0.0	0.0	0.0	0.0	0.0	0.0	0.0					
Monitoring	0.0	0.0	0.0	0.0	0.0	0.0	0.0	0.0	0.0	0.0	0.0	0.0	0.0	0.0	0.0	0.0					
<b>Subtotal</b>	<b>0.0</b>	<b>0.0</b>	<b>0.0</b>	<b>0.0</b>	<b>0.0</b>	<b>0.0</b>	<b>0.0</b>	<b>0.0</b>	<b>0.0</b>	<b>0.0</b>	<b>0.0</b>	<b>0.0</b>	<b>0.0</b>	<b>0.0</b>	<b>0.0</b>	<b>0.0</b>					
<b>Sarasota Barriers (North Reach) - Southwest Channel to Sarasota County R45</b>																					
<b>Manatee County</b>																					
<b>Anna Maria Island Segment/ Manatee County Shore Protection Project (federal and non-federal components) and Passage Key IMP Study (R1-R10, R12-R41.3)</b>																					
Project	Federal FY 18/19	State FY 18/19	Local FY 18/19	Federal FY 19/20	State FY 19/20	Local FY 19/20	Federal FY 20/21	State FY 20/21	Local FY 20/21	Federal FY 21/22	State FY 21/22	Local FY 21/22	Federal FY 22/23	State FY 22/23	Local FY 22/23	TOTAL	FY 23/24	FY 24/25	FY 25/26	FY 26/27	FY 27/28
Feasibility	0.0	75.0	75.0	0.0	0.0	0.0	0.0	0.0	0.0	0.0	0.0	0.0	0.0	0.0	0.0	150.0					
Design	0.0	0.0	0.0	0.0	50.0	50.0	0.0	0.0	0.0	0.0	0.0	0.0	0.0	0.0	0.0	100.0					
Construction	0.0	0.0	0.0	0.0	0.0	0.0	0.0	2,880.0	2,880.0	7,553.7	3,773.2	3,773.1	0.0	0.0	0.0	20,860.0					C
Monitoring	0.0	0.0	0.0	63.5	63.7	63.7	0.0	271.3	271.3	67.1	142.9	143.0	68.9	228.5	228.5	1,612.4	M	M	M	M	M
<b>Subtotal</b>	<b>0.0</b>	<b>75.0</b>	<b>75.0</b>	<b>63.5</b>	<b>113.7</b>	<b>113.7</b>	<b>0.0</b>	<b>3,151.3</b>	<b>3,151.3</b>	<b>7,620.8</b>	<b>3,916.1</b>	<b>3,916.1</b>	<b>68.9</b>	<b>228.5</b>	<b>228.5</b>	<b>22,722.4</b>					

FLORIDA DEPARTMENT OF ENVIRONMENTAL PROTECTION  
 Division of Water Restoration Assistance  
 FY 2018-2028 Long Range Budget Plan

Southwest Gulf Coast (in thousands of dollars)

West Coast Inland Navigation District/Manatee County/Town of Longboat Key																					
Longboat Pass IMP Implementation (R41)																					
Project	Federal FY 18/19	State FY 18/19	Local FY 18/19	Federal FY 19/20	State FY 19/20	Local FY 19/20	Federal FY 20/21	State FY 20/21	Local FY 20/21	Federal FY 21/22	State FY 21/22	Local FY 21/22	Federal FY 22/23	State FY 22/23	Local FY 22/23	TOTAL	FY 23/24	FY 24/25	FY 25/26	FY 26/27	FY 27/28
Feasibility	0.0	0.0	0.0	0.0	0.0	0.0	0.0	0.0	0.0	0.0	0.0	0.0	0.0	0.0	0.0	0.0					
Design	0.0	0.0	0.0	0.0	0.0	0.0	0.0	0.0	0.0	0.0	0.0	0.0	0.0	0.0	0.0	0.0					
Construction	0.0	0.0	0.0	0.0	3,450.0	1,150.0	0.0	0.0	0.0	0.0	0.0	0.0	0.0	0.0	0.0	0.0	4,600.0				
Monitoring	0.0	0.0	0.0	0.0	0.0	0.0	0.0	0.0	0.0	0.0	0.0	0.0	0.0	0.0	0.0	0.0					
<b>Subtotal</b>	<b>0.0</b>	<b>0.0</b>	<b>0.0</b>	<b>0.0</b>	<b>3,450.0</b>	<b>1,150.0</b>	<b>0.0</b>	<b>0.0</b>	<b>0.0</b>	<b>0.0</b>	<b>0.0</b>	<b>0.0</b>	<b>0.0</b>	<b>0.0</b>	<b>0.0</b>	<b>0.0</b>	<b>4,600.0</b>			M	M
Town of Longboat Key																					
Longboat Key Beach Nourishment (R42-R67.5)																					
Project	Federal FY 18/19	State FY 18/19	Local FY 18/19	Federal FY 19/20	State FY 19/20	Local FY 19/20	Federal FY 20/21	State FY 20/21	Local FY 20/21	Federal FY 21/22	State FY 21/22	Local FY 21/22	Federal FY 22/23	State FY 22/23	Local FY 22/23	TOTAL	FY 23/24	FY 24/25	FY 25/26	FY 26/27	FY 27/28
Feasibility	0.0	0.0	0.0	0.0	0.0	0.0	0.0	0.0	0.0	0.0	0.0	0.0	0.0	0.0	0.0	0.0					
Design	0.0	0.0	0.0	0.0	102.6	347.4	0.0	27.4	92.6	0.0	0.0	0.0	0.0	0.0	0.0	0.0	570.0	D			D
Construction	0.0	0.0	0.0	0.0	1,678.6	5,686.4	0.0	4,785.9	16,214.1	0.0	22.8	77.2	0.0	11.4	38.6	28,515.0					
Monitoring	0.0	0.0	0.0	0.0	48.2	223.4	0.0	54.7	185.3	0.0	107.1	362.8	0.0	69.5	235.5	1,286.5	M	M	M	M	M
<b>Subtotal</b>	<b>0.0</b>	<b>0.0</b>	<b>0.0</b>	<b>0.0</b>	<b>1,829.4</b>	<b>6,257.2</b>	<b>0.0</b>	<b>4,868.0</b>	<b>16,492.0</b>	<b>0.0</b>	<b>129.9</b>	<b>440.0</b>	<b>0.0</b>	<b>80.9</b>	<b>274.1</b>	<b>30,371.5</b>					
City of Sarasota																					
Lido Key Segment/ Sarasota County Shore Protection Project (R35-R44)																					
Project	Federal FY 18/19	State FY 18/19	Local FY 18/19	Federal FY 19/20	State FY 19/20	Local FY 19/20	Federal FY 20/21	State FY 20/21	Local FY 20/21	Federal FY 21/22	State FY 21/22	Local FY 21/22	Federal FY 22/23	State FY 22/23	Local FY 22/23	TOTAL	FY 23/24	FY 24/25	FY 25/26	FY 26/27	FY 27/28
Feasibility	0.0	0.0	0.0	0.0	0.0	0.0	0.0	0.0	0.0	0.0	0.0	0.0	0.0	0.0	0.0	0.0					
Design	0.0	0.0	0.0	0.0	0.0	0.0	0.0	0.0	0.0	0.0	0.0	0.0	310.0	95.0	95.0	500.0					D
Construction	0.0	0.0	0.0	0.0	0.0	0.0	0.0	0.0	0.0	0.0	0.0	0.0	0.0	0.0	0.0	0.0	C				
Monitoring	0.0	0.0	0.0	0.0	200.0	200.0	0.0	200.0	200.0	0.0	200.0	200.0	0.0	0.0	0.0	1,200.0		M	M	M	
<b>Subtotal</b>	<b>0.0</b>	<b>0.0</b>	<b>0.0</b>	<b>0.0</b>	<b>200.0</b>	<b>200.0</b>	<b>0.0</b>	<b>200.0</b>	<b>200.0</b>	<b>0.0</b>	<b>200.0</b>	<b>200.0</b>	<b>310.0</b>	<b>95.0</b>	<b>95.0</b>	<b>1,700.0</b>					
Sarasota Barriers (South Reach) - Sarasota County R45 to R143																					
West Coast Inland Navigation District																					
Southwest Gulf Coast Regional Inlet Study (R67-R77)																					
Project	Federal FY 18/19	State FY 18/19	Local FY 18/19	Federal FY 19/20	State FY 19/20	Local FY 19/20	Federal FY 20/21	State FY 20/21	Local FY 20/21	Federal FY 21/22	State FY 21/22	Local FY 21/22	Federal FY 22/23	State FY 22/23	Local FY 22/23	TOTAL	FY 23/24	FY 24/25	FY 25/26	FY 26/27	FY 27/28
Feasibility	0.0	0.0	0.0	0.0	0.0	0.0	0.0	0.0	0.0	0.0	0.0	0.0	0.0	0.0	0.0	0.0					
Design	0.0	0.0	0.0	0.0	75.0	25.0	0.0	75.0	25.0	0.0	0.0	0.0	0.0	0.0	0.0	200.0					
Construction	0.0	0.0	0.0	0.0	0.0	0.0	0.0	0.0	0.0	0.0	0.0	0.0	0.0	0.0	0.0	0.0					
Monitoring	0.0	0.0	0.0	0.0	0.0	0.0	0.0	0.0	0.0	0.0	0.0	0.0	0.0	0.0	0.0	0.0					
<b>Subtotal</b>	<b>0.0</b>	<b>0.0</b>	<b>0.0</b>	<b>0.0</b>	<b>75.0</b>	<b>25.0</b>	<b>0.0</b>	<b>75.0</b>	<b>25.0</b>	<b>0.0</b>	<b>0.0</b>	<b>0.0</b>	<b>0.0</b>	<b>0.0</b>	<b>0.0</b>	<b>200.0</b>					
Sarasota County																					
South Siesta Key Beach Nourishment (R67-R77)																					
Project	Federal FY 18/19	State FY 18/19	Local FY 18/19	Federal FY 19/20	State FY 19/20	Local FY 19/20	Federal FY 20/21	State FY 20/21	Local FY 20/21	Federal FY 21/22	State FY 21/22	Local FY 21/22	Federal FY 22/23	State FY 22/23	Local FY 22/23	TOTAL	FY 23/24	FY 24/25	FY 25/26	FY 26/27	FY 27/28
Feasibility	0.0	0.0	0.0	0.0	0.0	0.0	0.0	0.0	0.0	0.0	0.0	0.0	0.0	0.0	0.0	0.0					
Design	0.0	0.0	0.0	0.0	0.0	0.0	0.0	0.0	0.0	0.0	0.0	0.0	0.0	0.0	0.0	0.0	D		C		
Construction	0.0	0.0	0.0	0.0	0.0	0.0	0.0	0.0	0.0	0.0	0.0	0.0	0.0	0.0	0.0	0.0					
Monitoring	0.0	82.6	117.4	0.0	62.0	88.0	0.0	62.0	88.0	0.0	62.0	88.0	0.0	62.0	88.0	800.0	M			M	
<b>Subtotal</b>	<b>0.0</b>	<b>82.6</b>	<b>117.4</b>	<b>0.0</b>	<b>62.0</b>	<b>88.0</b>	<b>0.0</b>	<b>62.0</b>	<b>88.0</b>	<b>0.0</b>	<b>62.0</b>	<b>88.0</b>	<b>0.0</b>	<b>62.0</b>	<b>88.0</b>	<b>800.0</b>					
West Coast Inland Navigation District																					
Venice IMP Implementation (R114-R115)																					
Project	Federal FY 18/19	State FY 18/19	Local FY 18/19	Federal FY 19/20	State FY 19/20	Local FY 19/20	Federal FY 20/21	State FY 20/21	Local FY 20/21	Federal FY 21/22	State FY 21/22	Local FY 21/22	Federal FY 22/23	State FY 22/23	Local FY 22/23	TOTAL	FY 23/24	FY 24/25	FY 25/26	FY 26/27	FY 27/28
Feasibility	0.0	0.0	0.0	0.0	0.0	0.0	0.0	0.0	0.0	0.0	0.0	0.0	0.0	0.0	0.0	0.0					
Design	0.0	0.0	0.0	0.0	0.0	0.0	0.0	15.0	5.0	0.0	20.2	6.8	0.0	0.0	0.0	47.0					
Construction	0.0	0.0	0.0	0.0	0.0	0.0	0.0	0.0	0.0	0.0	0.0	0.0	0.0	0.0	0.0	0.0					
Monitoring	0.0	0.0	0.0	0.0	7.5	2.5	0.0	7.5	2.5	0.0	0.0	0.0	0.0	0.0	0.0	20.0	M	M	M		
<b>Subtotal</b>	<b>0.0</b>	<b>0.0</b>	<b>0.0</b>	<b>0.0</b>	<b>7.5</b>	<b>2.5</b>	<b>0.0</b>	<b>22.5</b>	<b>7.5</b>	<b>0.0</b>	<b>20.2</b>	<b>6.8</b>	<b>0.0</b>	<b>0.0</b>	<b>0.0</b>	<b>67.0</b>					
City of Venice																					
Venice Beach Segment/ Sarasota County Shore Protection Project (R116-R133)																					
Project	Federal FY 18/19	State FY 18/19	Local FY 18/19	Federal FY 19/20	State FY 19/20	Local FY 19/20	Federal FY 20/21	State FY 20/21	Local FY 20/21	Federal FY 21/22	State FY 21/22	Local FY 21/22	Federal FY 22/23	State FY 22/23	Local FY 22/23	TOTAL	FY 23/24	FY 24/25	FY 25/26	FY 26/27	FY 27/28
Feasibility	0.0	0.0	0.0	0.0	0.0	0.0	0.0	0.0	0.0	0.0	0.0	0.0	0.0	0.0	0.0	0.0					
Design	0.0	0.0	0.0	0.0	0.0	0.0	0.0	0.0	0.0	0.0	0.0	0.0	0.0	0.0	0.0	0.0					
Construction	0.0	0.0	0.0	0.0	0.0	0.0	0.0	0.0	0.0	0.0	0.0	0.0	0.0	0.0	0.0	0.0	C				
Monitoring	0.0	0.0	0.0	0.0	0.0	0.0	0.0	140.0	159.0	0.0	0.0	0.0	0.0	0.0	0.0	299.0		M	M	M	
<b>Subtotal</b>	<b>0.0</b>	<b>0.0</b>	<b>0.0</b>	<b>0.0</b>	<b>0.0</b>	<b>0.0</b>	<b>0.0</b>	<b>140.0</b>	<b>159.0</b>	<b>0.0</b>	<b>0.0</b>	<b>0.0</b>	<b>0.0</b>	<b>0.0</b>	<b>0.0</b>	<b>299.0</b>					

FLORIDA DEPARTMENT OF ENVIRONMENTAL PROTECTION

Division of Water Restoration Assistance

FY 2018-2028 Long Range Budget Plan

Southwest Gulf Coast (in thousands of dollars)

<b>Manasota Barriers - Sarasota County R143 to Gasparilla Pass</b>																						
Charlotte County																						
Charlotte County Beach Restoration (R9.1-R17, R28-R39)																						
Project	Federal FY 18/19	State FY 18/19	Local FY 18/19	Federal FY 19/20	State FY 19/20	Local FY 19/20	Federal FY 20/21	State FY 20/21	Local FY 20/21	Federal FY 21/22	State FY 21/22	Local FY 21/22	Federal FY 22/23	State FY 22/23	Local FY 22/23	TOTAL	FY 23/24	FY 24/25	FY 25/26	FY 26/27	FY 27/28	
Feasibility	0.0	0.0	0.0	0.0	0.0	0.0	0.0	0.0	0.0	0.0	0.0	0.0	0.0	0.0	0.0	0.0	0.0					
Design	0.0	0.0	0.0	0.0	0.0	0.0	0.0	13.3	20.7	0.0	0.0	0.0	0.0	0.0	0.0	0.0	34.0			D		
Construction	0.0	0.0	0.0	1,040.5	11,019.3	17,235.2	0.0	0.0	0.0	0.0	1,384.1	2,164.9	0.0	0.0	0.0	32,844.0				C		
Monitoring	0.0	0.0	0.0	0.0	65.5	102.5	0.0	137.7	215.3	0.0	72.2	112.8	0.0	142.7	223.3	1,072.0	M	M			M	M
<b>Subtotal</b>	<b>0.0</b>	<b>0.0</b>	<b>0.0</b>	<b>1,040.5</b>	<b>11,084.8</b>	<b>17,337.7</b>	<b>0.0</b>	<b>151.0</b>	<b>236.0</b>	<b>0.0</b>	<b>1,456.3</b>	<b>2,277.7</b>	<b>0.0</b>	<b>142.7</b>	<b>223.3</b>	<b>33,950.0</b>						
Charlotte County																						
Stump Pass IMP Study																						
Project	Federal FY 18/19	State FY 18/19	Local FY 18/19	Federal FY 19/20	State FY 19/20	Local FY 19/20	Federal FY 20/21	State FY 20/21	Local FY 20/21	Federal FY 21/22	State FY 21/22	Local FY 21/22	Federal FY 22/23	State FY 22/23	Local FY 22/23	TOTAL	FY 23/24	FY 24/25	FY 25/26	FY 26/27	FY 27/28	
Feasibility	0.0	0.0	0.0	0.0	0.0	0.0	0.0	0.0	0.0	0.0	0.0	0.0	0.0	0.0	0.0	0.0	0.0					
Design	0.0	0.0	0.0	0.0	0.0	0.0	0.0	0.0	0.0	0.0	0.0	0.0	0.0	0.0	0.0	0.0	0.0					
Construction	0.0	0.0	0.0	0.0	0.0	0.0	0.0	0.0	0.0	0.0	0.0	0.0	0.0	0.0	0.0	0.0	0.0					
Monitoring	0.0	0.0	0.0	0.0	0.0	0.0	0.0	0.0	0.0	0.0	0.0	0.0	0.0	0.0	0.0	0.0	0.0					
<b>Subtotal</b>	<b>0.0</b>	<b>0.0</b>	<b>0.0</b>	<b>0.0</b>	<b>0.0</b>	<b>0.0</b>	<b>0.0</b>	<b>0.0</b>	<b>0.0</b>	<b>0.0</b>	<b>0.0</b>	<b>0.0</b>	<b>0.0</b>	<b>0.0</b>	<b>0.0</b>	<b>0.0</b>	<b>0.0</b>					
<b>Charlotte Harbor Complex - Gasparilla Pass to San Carlos Bay Entrance</b>																						
Lee County																						
Gasparilla Island Segment/ Lee County Shore Protection Project (R10-R26)																						
Project	Federal FY 18/19	State FY 18/19	Local FY 18/19	Federal FY 19/20	State FY 19/20	Local FY 19/20	Federal FY 20/21	State FY 20/21	Local FY 20/21	Federal FY 21/22	State FY 21/22	Local FY 21/22	Federal FY 22/23	State FY 22/23	Local FY 22/23	TOTAL	FY 23/24	FY 24/25	FY 25/26	FY 26/27	FY 27/28	
Feasibility	0.0	0.0	0.0	0.0	0.0	0.0	0.0	0.0	0.0	0.0	0.0	0.0	0.0	0.0	0.0	0.0	0.0					
Design	0.0	0.0	0.0	0.0	0.0	0.0	461.5	162.8	200.7	461.5	162.8	200.7	0.0	0.0	0.0	1,650.0						
Construction	0.0	0.0	0.0	0.0	0.0	0.0	0.0	0.0	0.0	0.0	0.0	0.0	0.0	0.0	0.0	0.0						
Monitoring	0.0	0.0	0.0	0.0	0.0	0.0	55.9	19.7	24.3	0.0	0.0	0.0	0.0	0.0	0.0	99.9		M	M	M		
<b>Subtotal</b>	<b>0.0</b>	<b>0.0</b>	<b>0.0</b>	<b>0.0</b>	<b>0.0</b>	<b>0.0</b>	<b>517.4</b>	<b>182.5</b>	<b>225.0</b>	<b>461.5</b>	<b>162.8</b>	<b>200.7</b>	<b>0.0</b>	<b>0.0</b>	<b>0.0</b>	<b>1,749.9</b>						
DEP, Division of Recreation and Parks																						
Gasparilla Island State Park Shore Stabilization Project (R24-R26)																						
Project	Federal FY 18/19	State FY 18/19	Local FY 18/19	Federal FY 19/20	State FY 19/20	Local FY 19/20	Federal FY 20/21	State FY 20/21	Local FY 20/21	Federal FY 21/22	State FY 21/22	Local FY 21/22	Federal FY 22/23	State FY 22/23	Local FY 22/23	TOTAL	FY 23/24	FY 24/25	FY 25/26	FY 26/27	FY 27/28	
Feasibility	0.0	0.0	0.0	0.0	0.0	0.0	0.0	0.0	0.0	0.0	0.0	0.0	0.0	0.0	0.0	0.0	0.0					
Design	0.0	0.0	0.0	0.0	0.0	0.0	0.0	0.0	0.0	0.0	0.0	0.0	0.0	0.0	0.0	0.0	0.0					
Construction	0.0	0.0	0.0	0.0	0.0	0.0	0.0	0.0	0.0	0.0	0.0	0.0	0.0	0.0	0.0	0.0	0.0					
Monitoring	0.0	0.0	0.0	0.0	0.0	0.0	0.0	0.0	0.0	0.0	0.0	0.0	0.0	0.0	0.0	0.0	0.0					
<b>Subtotal</b>	<b>0.0</b>	<b>0.0</b>	<b>0.0</b>	<b>0.0</b>	<b>0.0</b>	<b>0.0</b>	<b>0.0</b>	<b>0.0</b>	<b>0.0</b>	<b>0.0</b>	<b>0.0</b>	<b>0.0</b>	<b>0.0</b>	<b>0.0</b>	<b>0.0</b>	<b>0.0</b>	<b>0.0</b>					
Captiva Erosion Prevention District																						
Redfish Pass Inlet Management Study (R82-R83) - No information available.																						
Project	Federal FY 18/19	State FY 18/19	Local FY 18/19	Federal FY 19/20	State FY 19/20	Local FY 19/20	Federal FY 20/21	State FY 20/21	Local FY 20/21	Federal FY 21/22	State FY 21/22	Local FY 21/22	Federal FY 22/23	State FY 22/23	Local FY 22/23	TOTAL	FY 23/24	FY 24/25	FY 25/26	FY 26/27	FY 27/28	
Feasibility	0.0	0.0	0.0	0.0	0.0	0.0	0.0	0.0	0.0	0.0	0.0	0.0	0.0	0.0	0.0	0.0	0.0					
Design	0.0	0.0	0.0	0.0	0.0	0.0	0.0	0.0	0.0	0.0	0.0	0.0	0.0	0.0	0.0	0.0	0.0					
Construction	0.0	0.0	0.0	0.0	0.0	0.0	0.0	0.0	0.0	0.0	0.0	0.0	0.0	0.0	0.0	0.0	0.0					
Monitoring	0.0	0.0	0.0	0.0	0.0	0.0	0.0	0.0	0.0	0.0	0.0	0.0	0.0	0.0	0.0	0.0	0.0					
<b>Subtotal</b>	<b>0.0</b>	<b>0.0</b>	<b>0.0</b>	<b>0.0</b>	<b>0.0</b>	<b>0.0</b>	<b>0.0</b>	<b>0.0</b>	<b>0.0</b>	<b>0.0</b>	<b>0.0</b>	<b>0.0</b>	<b>0.0</b>	<b>0.0</b>	<b>0.0</b>	<b>0.0</b>	<b>0.0</b>					
Captiva Erosion Prevention District																						
Captiva/Sanibel Island Beach Nourishment (R84-R118)																						
Project	Federal FY 18/19	State FY 18/19	Local FY 18/19	Federal FY 19/20	State FY 19/20	Local FY 19/20	Federal FY 20/21	State FY 20/21	Local FY 20/21	Federal FY 21/22	State FY 21/22	Local FY 21/22	Federal FY 22/23	State FY 22/23	Local FY 22/23	TOTAL	FY 23/24	FY 24/25	FY 25/26	FY 26/27	FY 27/28	
Feasibility	0.0	0.0	0.0	0.0	0.0	0.0	0.0	0.0	0.0	0.0	0.0	0.0	0.0	0.0	0.0	0.0	0.0					
Design	0.0	0.0	0.0	0.0	28.1	121.9	0.0	18.7	81.3	0.0	0.0	0.0	0.0	0.0	0.0	250.0						
Construction	0.0	0.0	0.0	0.0	0.0	0.0	0.0	0.0	0.0	0.0	4,677.5	20,322.5	0.0	0.0	0.0	25,000.0						
Monitoring	0.0	0.0	0.0	0.0	0.0	0.0	0.0	17.0	74.0	0.0	17.6	76.4	0.0	18.1	78.9	282.0	M	M	M		M	
<b>Subtotal</b>	<b>0.0</b>	<b>0.0</b>	<b>0.0</b>	<b>0.0</b>	<b>28.1</b>	<b>121.9</b>	<b>0.0</b>	<b>35.7</b>	<b>155.3</b>	<b>0.0</b>	<b>4,695.1</b>	<b>20,398.9</b>	<b>0.0</b>	<b>18.1</b>	<b>78.9</b>	<b>25,532.0</b>						

FLORIDA DEPARTMENT OF ENVIRONMENTAL PROTECTION

Division of Water Restoration Assistance

FY 2018-2028 Long Range Budget Plan

Southwest Gulf Coast (in thousands of dollars)

Lee County																					
Blind Pass Eco-zone Restoration (R109-R114)																					
Project	Federal FY 18/19	State FY 18/19	Local FY 18/19	Federal FY 19/20	State FY 19/20	Local FY 19/20	Federal FY 20/21	State FY 20/21	Local FY 20/21	Federal FY 21/22	State FY 21/22	Local FY 21/22	Federal FY 22/23	State FY 22/23	Local FY 22/23	TOTAL	FY 23/24	FY 24/25	FY 25/26	FY 26/27	FY 27/28
Feasibility	0.0	0.0	0.0	0.0	0.0	0.0	0.0	0.0	0.0	0.0	0.0	0.0	0.0	0.0	0.0	0.0					
Design	0.0	0.0	0.0	0.0	0.0	0.0	0.0	0.0	0.0	0.0	0.0	0.0	0.0	0.0	0.0	0.0					
Construction	0.0	0.0	0.0	0.0	0.0	0.0	0.0	0.0	0.0	0.0	0.0	0.0	0.0	0.0	0.0	0.0					
Monitoring	0.0	0.0	0.0	0.0	28.0	28.0	0.0	26.0	26.0	0.0	0.0	0.0	0.0	0.0	0.0	0.0					
<b>Subtotal</b>	<b>0.0</b>	<b>0.0</b>	<b>0.0</b>	<b>0.0</b>	<b>28.0</b>	<b>28.0</b>	<b>0.0</b>	<b>26.0</b>	<b>26.0</b>	<b>0.0</b>	<b>0.0</b>	<b>0.0</b>	<b>0.0</b>	<b>0.0</b>	<b>0.0</b>	<b>0.0</b>					
Lee County																					
Blind Pass IMP Study (R99-120) - No information available.																					
Project	Federal FY 18/19	State FY 18/19	Local FY 18/19	Federal FY 19/20	State FY 19/20	Local FY 19/20	Federal FY 20/21	State FY 20/21	Local FY 20/21	Federal FY 21/22	State FY 21/22	Local FY 21/22	Federal FY 22/23	State FY 22/23	Local FY 22/23	TOTAL	FY 23/24	FY 24/25	FY 25/26	FY 26/27	FY 27/28
Feasibility	0.0	0.0	0.0	0.0	0.0	0.0	0.0	0.0	0.0	0.0	0.0	0.0	0.0	0.0	0.0	0.0					
Design	0.0	0.0	0.0	0.0	0.0	0.0	0.0	0.0	0.0	0.0	0.0	0.0	0.0	0.0	0.0	0.0					
Construction	0.0	0.0	0.0	0.0	0.0	0.0	0.0	0.0	0.0	0.0	0.0	0.0	0.0	0.0	0.0	0.0					
Monitoring	0.0	0.0	0.0	0.0	0.0	0.0	0.0	0.0	0.0	0.0	0.0	0.0	0.0	0.0	0.0	0.0					
<b>Subtotal</b>	<b>0.0</b>	<b>0.0</b>	<b>0.0</b>	<b>0.0</b>	<b>0.0</b>	<b>0.0</b>	<b>0.0</b>	<b>0.0</b>	<b>0.0</b>	<b>0.0</b>	<b>0.0</b>	<b>0.0</b>	<b>0.0</b>	<b>0.0</b>	<b>0.0</b>	<b>0.0</b>					
Estero Barriers - San Carlos Bay Entrance to Lee/Collier County Line																					
Lee County																					
Estero Island Segment/ Lee County Shore Protection Project (R175-R196.5)																					
Project	Federal FY 18/19	State FY 18/19	Local FY 18/19	Federal FY 19/20	State FY 19/20	Local FY 19/20	Federal FY 20/21	State FY 20/21	Local FY 20/21	Federal FY 21/22	State FY 21/22	Local FY 21/22	Federal FY 22/23	State FY 22/23	Local FY 22/23	TOTAL	FY 23/24	FY 24/25	FY 25/26	FY 26/27	FY 27/28
Feasibility	0.0	0.0	0.0	0.0	0.0	0.0	0.0	0.0	0.0	0.0	0.0	0.0	0.0	0.0	0.0	0.0					
Design	0.0	0.0	0.0	0.0	0.0	0.0	0.0	0.0	0.0	0.0	0.0	0.0	0.0	0.0	0.0	0.0					
Construction	0.0	0.0	0.0	0.0	0.0	0.0	0.0	0.0	0.0	0.0	0.0	0.0	0.0	0.0	0.0	0.0					
Monitoring	0.0	0.0	0.0	0.0	0.0	0.0	0.0	16.0	16.0	0.0	0.0	0.0	0.0	0.0	0.0	0.0					
<b>Subtotal</b>	<b>0.0</b>	<b>0.0</b>	<b>0.0</b>	<b>0.0</b>	<b>0.0</b>	<b>0.0</b>	<b>0.0</b>	<b>16.0</b>	<b>16.0</b>	<b>0.0</b>	<b>0.0</b>	<b>0.0</b>	<b>0.0</b>	<b>0.0</b>	<b>0.0</b>	<b>0.0</b>					
Lee County																					
Big Carlos Pass IMP Study (R210-R211)																					
Project	Federal FY 18/19	State FY 18/19	Local FY 18/19	Federal FY 19/20	State FY 19/20	Local FY 19/20	Federal FY 20/21	State FY 20/21	Local FY 20/21	Federal FY 21/22	State FY 21/22	Local FY 21/22	Federal FY 22/23	State FY 22/23	Local FY 22/23	TOTAL	FY 23/24	FY 24/25	FY 25/26	FY 26/27	FY 27/28
Feasibility	0.0	0.0	0.0	0.0	0.0	0.0	0.0	0.0	0.0	0.0	0.0	0.0	0.0	0.0	0.0	0.0					
Design	0.0	0.0	0.0	0.0	0.0	0.0	0.0	0.0	0.0	0.0	0.0	0.0	0.0	0.0	0.0	0.0					
Construction	0.0	0.0	0.0	0.0	0.0	0.0	0.0	677.3	225.7	0.0	0.0	0.0	0.0	0.0	0.0	903.0			C		
Monitoring	0.0	0.0	0.0	0.0	18.7	6.3	0.0	0.0	0.0	0.0	18.8	6.2	0.0	18.8	6.2	75.0				M	M
<b>Subtotal</b>	<b>0.0</b>	<b>0.0</b>	<b>0.0</b>	<b>0.0</b>	<b>18.7</b>	<b>6.3</b>	<b>0.0</b>	<b>677.3</b>	<b>225.7</b>	<b>0.0</b>	<b>18.8</b>	<b>6.2</b>	<b>0.0</b>	<b>18.8</b>	<b>6.2</b>	<b>978.0</b>					
Lee County																					
Lovers Key Beach Nourishment (R214.5-R220.5)																					
Project	Federal FY 18/19	State FY 18/19	Local FY 18/19	Federal FY 19/20	State FY 19/20	Local FY 19/20	Federal FY 20/21	State FY 20/21	Local FY 20/21	Federal FY 21/22	State FY 21/22	Local FY 21/22	Federal FY 22/23	State FY 22/23	Local FY 22/23	TOTAL	FY 23/24	FY 24/25	FY 25/26	FY 26/27	FY 27/28
Feasibility	0.0	0.0	0.0	0.0	0.0	0.0	0.0	0.0	0.0	0.0	0.0	0.0	0.0	0.0	0.0	0.0					
Design	0.0	260.0	260.0	0.0	0.0	0.0	0.0	0.0	0.0	0.0	0.0	0.0	0.0	0.0	0.0	520.0					
Construction	0.0	0.0	0.0	0.0	0.0	0.0	0.0	0.0	0.0	0.0	0.0	0.0	0.0	0.0	0.0	0.0			C		
Monitoring	0.0	0.0	0.0	0.0	0.0	0.0	0.0	0.0	0.0	0.0	0.0	0.0	0.0	0.0	0.0	0.0				M	M
<b>Subtotal</b>	<b>0.0</b>	<b>260.0</b>	<b>260.0</b>	<b>0.0</b>	<b>0.0</b>	<b>0.0</b>	<b>0.0</b>	<b>0.0</b>	<b>0.0</b>	<b>0.0</b>	<b>0.0</b>	<b>0.0</b>	<b>0.0</b>	<b>0.0</b>	<b>0.0</b>	<b>520.0</b>					
Lee County																					
Estero Bay Regional Inlet Management Study (R209-R227)																					
Project	Federal FY 18/19	State FY 18/19	Local FY 18/19	Federal FY 19/20	State FY 19/20	Local FY 19/20	Federal FY 20/21	State FY 20/21	Local FY 20/21	Federal FY 21/22	State FY 21/22	Local FY 21/22	Federal FY 22/23	State FY 22/23	Local FY 22/23	TOTAL	FY 23/24	FY 24/25	FY 25/26	FY 26/27	FY 27/28
Feasibility	0.0	158.5	52.8	0.0	42.1	14.0	0.0	0.0	0.0	0.0	0.0	0.0	0.0	0.0	0.0	267.4					
Design	0.0	0.0	0.0	0.0	195.5	65.2	0.0	75.0	25.0	0.0	75.0	25.0	0.0	0.0	0.0	460.7					D
Construction	0.0	0.0	0.0	0.0	0.0	0.0	0.0	0.0	0.0	0.0	0.0	0.0	0.0	0.0	0.0	0.0					C
Monitoring	0.0	0.0	0.0	0.0	0.0	0.0	0.0	0.0	0.0	0.0	0.0	0.0	0.0	0.0	0.0	0.0				M	M
<b>Subtotal</b>	<b>0.0</b>	<b>158.5</b>	<b>52.8</b>	<b>0.0</b>	<b>237.6</b>	<b>79.2</b>	<b>0.0</b>	<b>75.0</b>	<b>25.0</b>	<b>0.0</b>	<b>75.0</b>	<b>25.0</b>	<b>0.0</b>	<b>0.0</b>	<b>0.0</b>	<b>728.1</b>					



FLORIDA DEPARTMENT OF ENVIRONMENTAL PROTECTION

Division of Water Restoration Assistance

FY 2018-2028 Long Range Budget Plan

Southwest Gulf Coast (in thousands of dollars)

Lee County																					
Bonita Beach Nourishment (R226-R230)																					
Project	Federal FY 18/19	State FY 18/19	Local FY 18/19	Federal FY 19/20	State FY 19/20	Local FY 19/20	Federal FY 20/21	State FY 20/21	Local FY 20/21	Federal FY 21/22	State FY 21/22	Local FY 21/22	Federal FY 22/23	State FY 22/23	Local FY 22/23	TOTAL	FY 23/24	FY 24/25	FY 25/26	FY 26/27	FY 27/28
Feasibility	0.0	0.0	0.0	0.0	0.0	0.0	0.0	0.0	0.0	0.0	0.0	0.0	0.0	0.0	0.0	0.0					
Design	0.0	0.0	0.0	0.0	0.0	0.0	0.0	55.5	94.5	0.0	0.0	0.0	0.0	0.0	0.0	0.0					
Construction	0.0	0.0	0.0	0.0	0.0	0.0	0.0	0.0	0.0	0.0	925.0	1,575.0	0.0	0.0	0.0	0.0					
Monitoring	0.0	0.0	0.0	0.0	12.3	20.9	0.0	0.0	0.0	0.0	13.0	22.2	0.0	0.0	0.0	0.0					
<b>Subtotal</b>	<b>0.0</b>	<b>0.0</b>	<b>0.0</b>	<b>0.0</b>	<b>12.3</b>	<b>20.9</b>	<b>0.0</b>	<b>55.5</b>	<b>94.5</b>	<b>0.0</b>	<b>938.0</b>	<b>1,597.2</b>	<b>0.0</b>	<b>0.0</b>	<b>0.0</b>	<b>2,718.4</b>					

Naples Coast - Lee/Collier County Line to R111																					
Collier County																					
Wiggins Pass Inlet Management Study																					
Project	Federal FY 18/19	State FY 18/19	Local FY 18/19	Federal FY 19/20	State FY 19/20	Local FY 19/20	Federal FY 20/21	State FY 20/21	Local FY 20/21	Federal FY 21/22	State FY 21/22	Local FY 21/22	Federal FY 22/23	State FY 22/23	Local FY 22/23	TOTAL	FY 23/24	FY 24/25	FY 25/26	FY 26/27	FY 27/28
Feasibility	0.0	0.0	0.0	0.0	0.0	0.0	0.0	0.0	0.0	0.0	0.0	0.0	0.0	0.0	0.0	0.0					
Design	0.0	37.5	12.5	0.0	0.0	0.0	0.0	56.3	18.7	0.0	0.0	0.0	0.0	0.0	0.0	0.0					
Construction	0.0	1,331.3	443.7	0.0	262.5	87.5	0.0	0.0	0.0	0.0	1,089.0	363.0	0.0	284.1	94.7	3,955.8		C		C	
Monitoring	0.0	0.0	0.0	0.0	114.8	38.2	0.0	117.0	39.0	0.0	119.4	39.7	0.0	126.7	42.2	637.0	M				M
<b>Subtotal</b>	<b>0.0</b>	<b>1,368.8</b>	<b>456.2</b>	<b>0.0</b>	<b>377.3</b>	<b>125.7</b>	<b>0.0</b>	<b>173.3</b>	<b>57.7</b>	<b>0.0</b>	<b>1,208.4</b>	<b>402.7</b>	<b>0.0</b>	<b>410.8</b>	<b>136.9</b>	<b>4,717.8</b>					

Collier County																					
Collier County Beach Nourishment (R21-R37, R43-R55, R58-R79)																					
Project	Federal FY 18/19	State FY 18/19	Local FY 18/19	Federal FY 19/20	State FY 19/20	Local FY 19/20	Federal FY 20/21	State FY 20/21	Local FY 20/21	Federal FY 21/22	State FY 21/22	Local FY 21/22	Federal FY 22/23	State FY 22/23	Local FY 22/23	TOTAL	FY 23/24	FY 24/25	FY 25/26	FY 26/27	FY 27/28
Feasibility	0.0	0.0	0.0	0.0	0.0	0.0	0.0	0.0	0.0	0.0	0.0	0.0	0.0	0.0	0.0	0.0					
Design	0.0	0.0	0.0	0.0	201.8	298.2	0.0	0.0	0.0	0.0	0.0	0.0	0.0	0.0	0.0	500.0					
Construction	0.0	0.0	0.0	0.0	16,099.6	23,800.4	0.0	0.0	0.0	0.0	0.0	0.0	0.0	0.0	0.0	39,900.0				C	
Monitoring	0.0	0.0	0.0	0.0	226.4	334.6	0.0	230.9	341.3	0.0	235.5	348.2	0.0	245.2	355.1	2,317.2	M	M	M	M	M
<b>Subtotal</b>	<b>0.0</b>	<b>0.0</b>	<b>0.0</b>	<b>0.0</b>	<b>16,527.8</b>	<b>24,433.2</b>	<b>0.0</b>	<b>230.9</b>	<b>341.3</b>	<b>0.0</b>	<b>235.5</b>	<b>348.2</b>	<b>0.0</b>	<b>245.2</b>	<b>355.1</b>	<b>42,717.2</b>					

Southern Barriers - Collier County R111 to Cape Romano																					
Collier County																					
Marco Island Beach Nourishment (R143-R148)																					
Project	Federal FY 18/19	State FY 18/19	Local FY 18/19	Federal FY 19/20	State FY 19/20	Local FY 19/20	Federal FY 20/21	State FY 20/21	Local FY 20/21	Federal FY 21/22	State FY 21/22	Local FY 21/22	Federal FY 22/23	State FY 22/23	Local FY 22/23	TOTAL	FY 23/24	FY 24/25	FY 25/26	FY 26/27	FY 27/28
Feasibility	0.0	0.0	0.0	0.0	0.0	0.0	0.0	0.0	0.0	0.0	0.0	0.0	0.0	0.0	0.0	0.0					
Design	0.0	0.0	0.0	0.0	0.0	0.0	0.0	0.0	0.0	0.0	0.0	0.0	0.0	0.0	0.0	0.0				D	
Construction	0.0	0.0	0.0	0.0	559.6	1,740.4	0.0	0.0	0.0	0.0	0.0	0.0	0.0	0.0	0.0	2,300.0				C	
Monitoring	0.0	0.0	0.0	0.0	24.0	74.9	0.0	24.5	76.4	0.0	25.0	77.9	0.0	23.1	71.9	397.7	M	M		M	M
<b>Subtotal</b>	<b>0.0</b>	<b>0.0</b>	<b>0.0</b>	<b>0.0</b>	<b>583.6</b>	<b>1,815.3</b>	<b>0.0</b>	<b>24.5</b>	<b>76.4</b>	<b>0.0</b>	<b>25.0</b>	<b>77.9</b>	<b>0.0</b>	<b>23.1</b>	<b>71.9</b>	<b>2,697.7</b>					

<b>TOTAL</b>	<b>0.0</b>	<b>1,526.4</b>	<b>648.6</b>	<b>1,104.0</b>	<b>34,443.2</b>	<b>51,770.4</b>	<b>517.4</b>	<b>10,115.5</b>	<b>21,600.7</b>	<b>15,042.3</b>	<b>15,633.1</b>	<b>32,525.4</b>	<b>378.9</b>	<b>1,359.1</b>	<b>1,591.9</b>	<b>188,256.9</b>					
FY TOTAL (Federal, State, Local)			<b>2,175.0</b>			<b>87,317.6</b>			<b>32,233.6</b>			<b>63,200.8</b>			<b>3,329.9</b>	<b>188,256.9</b>					

FLORIDA DEPARTMENT OF ENVIRONMENTAL PROTECTION  
 Division of Water Restoration Assistance  
 FY 2018-2028 Long Range Budget Plan

Panhandle Gulf Coast (in thousands of dollars)

<b>Western Barriers - Florida/Alabama Border to Okaloosa/Walton County Line</b>																						
<b>Escambia County</b>																						
<b>Perdido Key Beach Restoration (R1-R34)</b>																						
Project	Federal FY 18/19	State FY 18/19	Local FY 18/19	Federal FY 19/20	State FY 19/20	Local FY 19/20	Federal FY 20/21	State FY 20/21	Local FY 20/21	Federal FY 21/22	State FY 21/22	Local FY 21/22	Federal FY 22/23	State FY 22/23	Local FY 22/23	TOTAL	FY 23/24	FY 24/25	FY 25/26	FY 26/27	FY 27/28	
Feasibility	0.0	0.0	0.0	0.0	0.0	0.0	0.0	0.0	0.0	0.0	0.0	0.0	0.0	0.0	0.0	0.0	0.0					
Design	0.0	0.0	0.0	0.0	0.0	0.0	0.0	0.0	0.0	0.0	0.0	0.0	0.0	0.0	0.0	0.0	0.0		D	D		
Construction	0.0	0.0	0.0	0.0	0.0	0.0	0.0	0.0	0.0	0.0	0.0	0.0	0.0	0.0	0.0	0.0	0.0				C	
Monitoring	0.0	0.0	0.0	0.0	0.0	0.0	0.0	56.5	114.5	0.0	61.0	123.5	0.0	11.3	143.2	510.0	M	M	M	M	M	
<b>Subtotal</b>	<b>0.0</b>	<b>0.0</b>	<b>0.0</b>	<b>0.0</b>	<b>0.0</b>	<b>0.0</b>	<b>0.0</b>	<b>56.5</b>	<b>114.5</b>	<b>0.0</b>	<b>61.0</b>	<b>123.5</b>	<b>0.0</b>	<b>11.3</b>	<b>143.2</b>	<b>510.0</b>						
<b>Escambia County</b>																						
<b>Pensacola Pass Inlet Management Study (R67-R68)</b>																						
Project	Federal FY 18/19	State FY 18/19	Local FY 18/19	Federal FY 19/20	State FY 19/20	Local FY 19/20	Federal FY 20/21	State FY 20/21	Local FY 20/21	Federal FY 21/22	State FY 21/22	Local FY 21/22	Federal FY 22/23	State FY 22/23	Local FY 22/23	TOTAL	FY 23/24	FY 24/25	FY 25/26	FY 26/27	FY 27/28	
Feasibility	0.0	311.2	103.8	0.0	0.0	0.0	0.0	0.0	0.0	0.0	0.0	0.0	0.0	0.0	0.0	415.0						
Design	0.0	0.0	0.0	0.0	0.0	0.0	0.0	0.0	0.0	0.0	0.0	0.0	0.0	0.0	0.0	0.0						
Construction	0.0	0.0	0.0	0.0	0.0	0.0	0.0	0.0	0.0	0.0	0.0	0.0	0.0	0.0	0.0	0.0						
Monitoring	0.0	0.0	0.0	0.0	0.0	0.0	0.0	0.0	0.0	0.0	0.0	0.0	0.0	0.0	0.0	0.0						
<b>Subtotal</b>	<b>0.0</b>	<b>311.2</b>	<b>103.8</b>	<b>0.0</b>	<b>0.0</b>	<b>0.0</b>	<b>0.0</b>	<b>0.0</b>	<b>0.0</b>	<b>0.0</b>	<b>0.0</b>	<b>0.0</b>	<b>0.0</b>	<b>0.0</b>	<b>0.0</b>	<b>415.0</b>						
<b>Santa Rosa Island Authority</b>																						
<b>Pensacola Beach Nourishment (R107-R151)</b>																						
Project	Federal FY 18/19	State FY 18/19	Local FY 18/19	Federal FY 19/20	State FY 19/20	Local FY 19/20	Federal FY 20/21	State FY 20/21	Local FY 20/21	Federal FY 21/22	State FY 21/22	Local FY 21/22	Federal FY 22/23	State FY 22/23	Local FY 22/23	TOTAL	FY 23/24	FY 24/25	FY 25/26	FY 26/27	FY 27/28	
Feasibility	0.0	0.0	0.0	0.0	0.0	0.0	0.0	0.0	0.0	0.0	0.0	0.0	0.0	0.0	0.0	0.0						
Design	0.0	0.0	0.0	0.0	0.0	0.0	0.0	0.0	0.0	0.0	100.0	100.0	0.0	0.0	0.0	200.0		D				
Construction	0.0	0.0	0.0	0.0	0.0	0.0	0.0	0.0	0.0	0.0	0.0	0.0	0.0	0.0	0.0	0.0			C			
Monitoring	0.0	100.5	100.5	0.0	24.5	24.5	0.0	82.0	82.0	0.0	24.5	24.5	0.0	83.0	83.0	629.0	M	M	M	M	M	
<b>Subtotal</b>	<b>0.0</b>	<b>100.5</b>	<b>100.5</b>	<b>0.0</b>	<b>24.5</b>	<b>24.5</b>	<b>0.0</b>	<b>82.0</b>	<b>82.0</b>	<b>0.0</b>	<b>124.5</b>	<b>124.5</b>	<b>0.0</b>	<b>83.0</b>	<b>83.0</b>	<b>829.0</b>						
<b>Santa Rosa County</b>																						
<b>Navarre Beach Nourishment (R192.5-R213.5)</b>																						
Project	Federal FY 18/19	State FY 18/19	Local FY 18/19	Federal FY 19/20	State FY 19/20	Local FY 19/20	Federal FY 20/21	State FY 20/21	Local FY 20/21	Federal FY 21/22	State FY 21/22	Local FY 21/22	Federal FY 22/23	State FY 22/23	Local FY 22/23	TOTAL	FY 23/24	FY 24/25	FY 25/26	FY 26/27	FY 27/28	
Feasibility	0.0	0.0	0.0	0.0	0.0	0.0	0.0	0.0	0.0	0.0	0.0	0.0	0.0	0.0	0.0	0.0						
Design	0.0	0.0	0.0	0.0	0.0	0.0	0.0	0.0	0.0	0.0	0.0	0.0	0.0	0.0	0.0	0.0				D		
Construction	0.0	0.0	0.0	0.0	0.0	0.0	0.0	0.0	0.0	0.0	0.0	0.0	0.0	0.0	0.0	0.0					C	
Monitoring	0.0	0.0	0.0	0.0	51.6	51.6	0.0	0.0	0.0	0.0	21.4	21.3	0.0	0.0	0.0	145.9		M		M	M	
<b>Subtotal</b>	<b>0.0</b>	<b>0.0</b>	<b>0.0</b>	<b>0.0</b>	<b>51.6</b>	<b>51.6</b>	<b>0.0</b>	<b>0.0</b>	<b>0.0</b>	<b>0.0</b>	<b>21.4</b>	<b>21.3</b>	<b>0.0</b>	<b>0.0</b>	<b>0.0</b>	<b>145.9</b>						
<b>Okaloosa County</b>																						
<b>Ft. Walton Beach/Okaloosa Island Restoration (R1-R15) - No information available.</b>																						
Project	Federal FY 18/19	State FY 18/19	Local FY 18/19	Federal FY 19/20	State FY 19/20	Local FY 19/20	Federal FY 20/21	State FY 20/21	Local FY 20/21	Federal FY 21/22	State FY 21/22	Local FY 21/22	Federal FY 22/23	State FY 22/23	Local FY 22/23	TOTAL	FY 23/24	FY 24/25	FY 25/26	FY 26/27	FY 27/28	
Feasibility	0.0	0.0	0.0	0.0	0.0	0.0	0.0	0.0	0.0	0.0	0.0	0.0	0.0	0.0	0.0	0.0						
Design	0.0	0.0	0.0	0.0	0.0	0.0	0.0	0.0	0.0	0.0	0.0	0.0	0.0	0.0	0.0	0.0						
Construction	0.0	0.0	0.0	0.0	0.0	0.0	0.0	0.0	0.0	0.0	0.0	0.0	0.0	0.0	0.0	0.0						
Monitoring	0.0	0.0	0.0	0.0	0.0	0.0	0.0	0.0	0.0	0.0	0.0	0.0	0.0	0.0	0.0	0.0						
<b>Subtotal</b>	<b>0.0</b>	<b>0.0</b>	<b>0.0</b>	<b>0.0</b>	<b>0.0</b>	<b>0.0</b>	<b>0.0</b>	<b>0.0</b>	<b>0.0</b>	<b>0.0</b>	<b>0.0</b>	<b>0.0</b>	<b>0.0</b>	<b>0.0</b>	<b>0.0</b>	<b>0.0</b>						
<b>Okaloosa County</b>																						
<b>East Pass Inlet Management Study</b>																						
Project	Federal FY 18/19	State FY 18/19	Local FY 18/19	Federal FY 19/20	State FY 19/20	Local FY 19/20	Federal FY 20/21	State FY 20/21	Local FY 20/21	Federal FY 21/22	State FY 21/22	Local FY 21/22	Federal FY 22/23	State FY 22/23	Local FY 22/23	TOTAL	FY 23/24	FY 24/25	FY 25/26	FY 26/27	FY 27/28	
Feasibility	0.0	71.0	23.7	0.0	0.0	0.0	0.0	0.0	0.0	0.0	0.0	0.0	0.0	0.0	0.0	0.0						
Design	0.0	0.0	0.0	0.0	0.0	0.0	0.0	0.0	0.0	0.0	0.0	0.0	0.0	0.0	0.0	0.0						
Construction	0.0	0.0	0.0	1,000.0	500.0	500.0	0.0	0.0	0.0	0.0	0.0	0.0	0.0	0.0	0.0	0.0						
Monitoring	0.0	0.0	0.0	0.0	0.0	0.0	0.0	20.0	20.0	0.0	20.0	20.0	0.0	20.0	20.0	0.0						
<b>Subtotal</b>	<b>0.0</b>	<b>71.0</b>	<b>23.7</b>	<b>1,000.0</b>	<b>500.0</b>	<b>500.0</b>	<b>0.0</b>	<b>20.0</b>	<b>20.0</b>	<b>0.0</b>	<b>20.0</b>	<b>20.0</b>	<b>0.0</b>	<b>20.0</b>	<b>20.0</b>	<b>2,214.7</b>						
<b>Pleistocene Mainland - Okaloosa/Walton County Line to Walton/Bay County Line</b>																						
<b>Okaloosa County</b>																						
<b>Western Destin Beach Restoration (R17-R25.5) - No information available.</b>																						
Project	Federal FY 18/19	State FY 18/19	Local FY 18/19	Federal FY 19/20	State FY 19/20	Local FY 19/20	Federal FY 20/21	State FY 20/21	Local FY 20/21	Federal FY 21/22	State FY 21/22	Local FY 21/22	Federal FY 22/23	State FY 22/23	Local FY 22/23	TOTAL	FY 23/24	FY 24/25	FY 25/26	FY 26/27	FY 27/28	
Feasibility	0.0	0.0	0.0	0.0	0.0	0.0	0.0	0.0	0.0	0.0	0.0	0.0	0.0	0.0	0.0	0.0						
Design	0.0	0.0	0.0	0.0	0.0	0.0	0.0	0.0	0.0	0.0	0.0	0.0	0.0	0.0	0.0	0.0						
Construction	0.0	0.0	0.0	0.0	0.0	0.0	0.0	0.0	0.0	0.0	0.0	0.0	0.0	0.0	0.0	0.0						
Monitoring	0.0	0.0	0.0	0.0	0.0	0.0	0.0	0.0	0.0	0.0	0.0	0.0	0.0	0.0	0.0	0.0						
<b>Subtotal</b>	<b>0.0</b>	<b>0.0</b>	<b>0.0</b>	<b>0.0</b>	<b>0.0</b>	<b>0.0</b>	<b>0.0</b>	<b>0.0</b>	<b>0.0</b>	<b>0.0</b>	<b>0.0</b>	<b>0.0</b>	<b>0.0</b>	<b>0.0</b>	<b>0.0</b>	<b>0.0</b>						

FLORIDA DEPARTMENT OF ENVIRONMENTAL PROTECTION  
 Division of Water Restoration Assistance  
 FY 2018-2028 Long Range Budget Plan

Panhandle Gulf Coast (in thousands of dollars)

City of Destin																						
Destin/Walton Beach Restoration (Destin) (R39-R50) - No information available.																						
Project	Federal FY 18/19	State FY 18/19	Local FY 18/19	Federal FY 19/20	State FY 19/20	Local FY 19/20	Federal FY 20/21	State FY 20/21	Local FY 20/21	Federal FY 21/22	State FY 21/22	Local FY 21/22	Federal FY 22/23	State FY 22/23	Local FY 22/23	TOTAL	FY 23/24	FY 24/25	FY 25/26	FY 26/27	FY 27/28	
Feasibility	0.0	0.0	0.0	0.0	0.0	0.0	0.0	0.0	0.0	0.0	0.0	0.0	0.0	0.0	0.0	0.0	0.0					
Design	0.0	0.0	0.0	0.0	0.0	0.0	0.0	0.0	0.0	0.0	0.0	0.0	0.0	0.0	0.0	0.0	0.0					
Construction	0.0	0.0	0.0	0.0	0.0	0.0	0.0	0.0	0.0	0.0	0.0	0.0	0.0	0.0	0.0	0.0	0.0					
Monitoring	0.0	0.0	0.0	0.0	0.0	0.0	0.0	0.0	0.0	0.0	0.0	0.0	0.0	0.0	0.0	0.0	0.0					
<b>Subtotal</b>	<b>0.0</b>	<b>0.0</b>	<b>0.0</b>	<b>0.0</b>	<b>0.0</b>	<b>0.0</b>	<b>0.0</b>	<b>0.0</b>	<b>0.0</b>	<b>0.0</b>	<b>0.0</b>	<b>0.0</b>	<b>0.0</b>	<b>0.0</b>	<b>0.0</b>	<b>0.0</b>	<b>0.0</b>					
Walton County																						
Walton County Beach Nourishment (R1-R23.5)																						
Project	Federal FY 18/19	State FY 18/19	Local FY 18/19	Federal FY 19/20	State FY 19/20	Local FY 19/20	Federal FY 20/21	State FY 20/21	Local FY 20/21	Federal FY 21/22	State FY 21/22	Local FY 21/22	Federal FY 22/23	State FY 22/23	Local FY 22/23	TOTAL	FY 23/24	FY 24/25	FY 25/26	FY 26/27	FY 27/28	
Feasibility	0.0	0.0	0.0	0.0	0.0	0.0	0.0	0.0	0.0	0.0	0.0	0.0	0.0	0.0	0.0	0.0	0.0					
Design	0.0	0.0	0.0	0.0	0.0	0.0	0.0	0.0	0.0	0.0	0.0	0.0	0.0	0.0	0.0	0.0	0.0		D	D		
Construction	0.0	0.0	0.0	0.0	0.0	0.0	0.0	0.0	0.0	0.0	0.0	0.0	0.0	0.0	0.0	0.0	0.0				C	
Monitoring	0.0	0.0	0.0	84.0	50.3	165.7	84.0	50.3	165.7	84.0	50.3	165.7	0.0	0.0	0.0	0.0	900.0	M				
<b>Subtotal</b>	<b>0.0</b>	<b>0.0</b>	<b>0.0</b>	<b>84.0</b>	<b>50.3</b>	<b>165.7</b>	<b>84.0</b>	<b>50.3</b>	<b>165.7</b>	<b>84.0</b>	<b>50.3</b>	<b>165.7</b>	<b>0.0</b>	<b>0.0</b>	<b>0.0</b>	<b>0.0</b>	<b>900.0</b>					
Walton County																						
Walton County Hurricane and Storm Damage Reduction Project (R1-R127) - No information available.																						
Project	Federal FY 18/19	State FY 18/19	Local FY 18/19	Federal FY 19/20	State FY 19/20	Local FY 19/20	Federal FY 20/21	State FY 20/21	Local FY 20/21	Federal FY 21/22	State FY 21/22	Local FY 21/22	Federal FY 22/23	State FY 22/23	Local FY 22/23	TOTAL	FY 23/24	FY 24/25	FY 25/26	FY 26/27	FY 27/28	
Feasibility	0.0	0.0	0.0	0.0	0.0	0.0	0.0	0.0	0.0	0.0	0.0	0.0	0.0	0.0	0.0	0.0	0.0					
Design	0.0	0.0	0.0	0.0	0.0	0.0	0.0	0.0	0.0	0.0	0.0	0.0	0.0	0.0	0.0	0.0	0.0					
Construction	0.0	0.0	0.0	0.0	0.0	0.0	0.0	0.0	0.0	0.0	0.0	0.0	0.0	0.0	0.0	0.0	0.0					
Monitoring	0.0	0.0	0.0	0.0	0.0	0.0	0.0	0.0	0.0	0.0	0.0	0.0	0.0	0.0	0.0	0.0	0.0					
<b>Subtotal</b>	<b>0.0</b>	<b>0.0</b>	<b>0.0</b>	<b>0.0</b>	<b>0.0</b>	<b>0.0</b>	<b>0.0</b>	<b>0.0</b>	<b>0.0</b>	<b>0.0</b>	<b>0.0</b>	<b>0.0</b>	<b>0.0</b>	<b>0.0</b>	<b>0.0</b>	<b>0.0</b>	<b>0.0</b>					
St. Andrews Reach - Walton/Bay County Line to Bay County R105																						
Bay County																						
Panama City Beaches Shore Protection Project (R1-R91)																						
Project	Federal FY 18/19	State FY 18/19	Local FY 18/19	Federal FY 19/20	State FY 19/20	Local FY 19/20	Federal FY 20/21	State FY 20/21	Local FY 20/21	Federal FY 21/22	State FY 21/22	Local FY 21/22	Federal FY 22/23	State FY 22/23	Local FY 22/23	TOTAL	FY 23/24	FY 24/25	FY 25/26	FY 26/27	FY 27/28	
Feasibility	0.0	0.0	0.0	0.0	0.0	0.0	0.0	0.0	0.0	0.0	0.0	0.0	0.0	0.0	0.0	0.0	0.0					
Design	0.0	37.1	61.2	0.0	0.0	0.0	0.0	0.0	0.0	0.0	0.0	0.0	0.0	0.0	0.0	98.3					D	
Construction	0.0	949.3	1,566.0	0.0	0.0	0.0	22,400.0	6,642.2	10,957.8	0.0	0.0	0.0	0.0	0.0	0.0	42,515.3					C	
Monitoring	0.0	205.7	339.3	0.0	100.0	165.0	0.0	60.4	99.6	0.0	109.4	180.6	0.0	100.0	165.0	1,525.0	M	M	M	M	M	
<b>Subtotal</b>	<b>0.0</b>	<b>1,192.1</b>	<b>1,966.5</b>	<b>0.0</b>	<b>100.0</b>	<b>165.0</b>	<b>22,400.0</b>	<b>6,702.6</b>	<b>11,057.4</b>	<b>0.0</b>	<b>109.4</b>	<b>180.6</b>	<b>0.0</b>	<b>100.0</b>	<b>165.0</b>	<b>44,138.6</b>						
DEP, Division of Recreation and Parks																						
St. Andrews IMP Implementation (R97)																						
Project	Federal FY 18/19	State FY 18/19	Local FY 18/19	Federal FY 19/20	State FY 19/20	Local FY 19/20	Federal FY 20/21	State FY 20/21	Local FY 20/21	Federal FY 21/22	State FY 21/22	Local FY 21/22	Federal FY 22/23	State FY 22/23	Local FY 22/23	TOTAL	FY 23/24	FY 24/25	FY 25/26	FY 26/27	FY 27/28	
Feasibility	0.0	0.0	0.0	0.0	0.0	0.0	0.0	0.0	0.0	0.0	0.0	0.0	0.0	0.0	0.0	0.0	0.0					
Design	0.0	0.0	0.0	0.0	0.0	0.0	0.0	0.0	0.0	0.0	0.0	0.0	0.0	0.0	0.0	0.0	0.0					
Construction	0.0	0.0	0.0	0.0	0.0	0.0	0.0	0.0	0.0	0.0	0.0	0.0	0.0	0.0	0.0	0.0	0.0					
Monitoring	0.0	0.0	0.0	0.0	0.0	0.0	0.0	0.0	0.0	0.0	0.0	0.0	0.0	0.0	0.0	0.0	0.0					
<b>Subtotal</b>	<b>0.0</b>	<b>0.0</b>	<b>0.0</b>	<b>0.0</b>	<b>0.0</b>	<b>0.0</b>	<b>0.0</b>	<b>0.0</b>	<b>0.0</b>	<b>0.0</b>	<b>0.0</b>	<b>0.0</b>	<b>0.0</b>	<b>0.0</b>	<b>0.0</b>	<b>0.0</b>	<b>0.0</b>					
Middle Barriers - Bay County R105 to Gulf County R31																						
Bay County																						
Mexico Beach Feasibility Study (R132-R138)																						
Project	Federal FY 18/19	State FY 18/19	Local FY 18/19	Federal FY 19/20	State FY 19/20	Local FY 19/20	Federal FY 20/21	State FY 20/21	Local FY 20/21	Federal FY 21/22	State FY 21/22	Local FY 21/22	Federal FY 22/23	State FY 22/23	Local FY 22/23	TOTAL	FY 23/24	FY 24/25	FY 25/26	FY 26/27	FY 27/28	
Feasibility	0.0	30.9	30.9	0.0	0.0	0.0	0.0	0.0	0.0	0.0	0.0	0.0	0.0	0.0	0.0	61.8						
Design	0.0	0.0	0.0	0.0	0.0	0.0	0.0	0.0	0.0	0.0	0.0	0.0	0.0	0.0	0.0	0.0	0.0					
Construction	0.0	0.0	0.0	0.0	40.3	49.7	0.0	0.0	0.0	0.0	0.0	0.0	0.0	0.0	0.0	90.0						
Monitoring	0.0	0.0	0.0	0.0	0.0	0.0	0.0	0.0	0.0	0.0	0.0	0.0	0.0	0.0	0.0	0.0	0.0					
<b>Subtotal</b>	<b>0.0</b>	<b>30.9</b>	<b>30.9</b>	<b>0.0</b>	<b>40.3</b>	<b>49.7</b>	<b>0.0</b>	<b>0.0</b>	<b>0.0</b>	<b>0.0</b>	<b>0.0</b>	<b>0.0</b>	<b>0.0</b>	<b>0.0</b>	<b>0.0</b>	<b>151.8</b>						

FLORIDA DEPARTMENT OF ENVIRONMENTAL PROTECTION  
 Division of Water Restoration Assistance  
 FY 2018-2028 Long Range Budget Plan

Panhandle Gulf Coast (in thousands of dollars)

City of Mexico Beach																						
Mexico Beach IMP Implementation (R132-R138)																						
Project	Federal FY 18/19	State FY 18/19	Local FY 18/19	Federal FY 19/20	State FY 19/20	Local FY 19/20	Federal FY 20/21	State FY 20/21	Local FY 20/21	Federal FY 21/22	State FY 21/22	Local FY 21/22	Federal FY 22/23	State FY 22/23	Local FY 22/23	TOTAL	FY 23/24	FY 24/25	FY 25/26	FY 26/27	FY 27/28	
Feasibility	0.0	0.0	0.0	0.0	0.0	0.0	0.0	0.0	0.0	0.0	0.0	0.0	0.0	0.0	0.0	0.0	0.0					
Design	0.0	0.0	0.0	0.0	71.6	88.4	0.0	71.6	88.4	0.0	71.6	88.4	0.0	0.0	0.0	0.0	480.0					
Construction	0.0	0.0	0.0	0.0	111.9	138.1	0.0	111.9	138.1	0.0	111.9	138.1	0.0	0.0	0.0	0.0	750.0	C	C	C	C	0
Monitoring	0.0	0.0	0.0	0.0	0.0	0.0	0.0	0.0	0.0	0.0	0.0	0.0	0.0	0.0	0.0	0.0	0.0	M	M	M	M	
<b>Subtotal</b>	<b>0.0</b>	<b>0.0</b>	<b>0.0</b>	<b>0.0</b>	<b>183.5</b>	<b>226.5</b>	<b>0.0</b>	<b>183.5</b>	<b>226.5</b>	<b>0.0</b>	<b>183.5</b>	<b>226.5</b>	<b>0.0</b>	<b>0.0</b>	<b>0.0</b>	<b>0.0</b>	<b>1230.0</b>					
San Blas Realignment																						
Gulf County																						
St. Joseph Peninsula Beach Nourishment (R69-R105.5)																						
Project	Federal FY 18/19	State FY 18/19	Local FY 18/19	Federal FY 19/20	State FY 19/20	Local FY 19/20	Federal FY 20/21	State FY 20/21	Local FY 20/21	Federal FY 21/22	State FY 21/22	Local FY 21/22	Federal FY 22/23	State FY 22/23	Local FY 22/23	TOTAL	FY 23/24	FY 24/25	FY 25/26	FY 26/27	FY 27/28	
Feasibility	0.0	0.0	0.0	0.0	0.0	0.0	0.0	0.0	0.0	0.0	0.0	0.0	0.0	0.0	0.0	0.0	0.0					
Design	0.0	76.0	124.0	0.0	0.0	0.0	0.0	0.0	0.0	0.0	0.0	0.0	0.0	0.0	0.0	0.0	200.0					
Construction	0.0	0.0	0.0	0.0	1,900.0	3,100.0	0.0	0.0	0.0	0.0	0.0	0.0	0.0	0.0	0.0	0.0	5,000.0		C			
Monitoring	0.0	95.0	155.0	0.0	95.0	155.0	0.0	133.0	217.0	0.0	133.0	217.0	0.0	133.0	217.0	1,550.0	M	M	M	M	M	
<b>Subtotal</b>	<b>0.0</b>	<b>171.0</b>	<b>279.0</b>	<b>0.0</b>	<b>1,995.0</b>	<b>3,255.0</b>	<b>0.0</b>	<b>133.0</b>	<b>217.0</b>	<b>0.0</b>	<b>133.0</b>	<b>217.0</b>	<b>0.0</b>	<b>133.0</b>	<b>217.0</b>	<b>6,750.0</b>						
<b>TOTAL</b>	<b>0.0</b>	<b>1,494.5</b>	<b>2,376.9</b>	<b>84.0</b>	<b>2,445.2</b>	<b>3,938.0</b>	<b>22,484.0</b>	<b>7,207.9</b>	<b>11,863.1</b>	<b>84.0</b>	<b>683.1</b>	<b>1,059.1</b>	<b>0.0</b>	<b>327.3</b>	<b>608.2</b>	<b>54,655.3</b>						
FY TOTAL (Federal, State, Local)			<b>3,871.4</b>			<b>6,467.2</b>			<b>41,555.0</b>			<b>1,826.2</b>			<b>935.5</b>	<b>54,655.3</b>						

Statewide Projects (in thousands of dollars)

**Statewide - Florida/Alabama Border to St. Marys River**

DEP Inlet Management (Sediment Budget Analysis and Inventory) and Southeast Florida Regional Sediment Management																
Project	Federal FY 18/19	State FY 18/19	Local FY 18/19	Federal FY 19/20	State FY 19/20	Local FY 19/20	Federal FY 20/21	State FY 20/21	Local FY 20/21	Federal FY 21/22	State FY 21/22	Local FY 21/22	Federal FY 22/23	State FY 22/23	Local FY 22/23	TOTAL
Feasibility	0.0	0.0	0.0	0.0	250.0	0.0	0.0	0.0	0.0	0.0	250.0	0.0	0.0	0.0	0.0	500.0
Design	0.0	0.0	0.0	0.0	0.0	0.0	0.0	0.0	0.0	0.0	0.0	0.0	0.0	0.0	0.0	0.0
Construction	0.0	0.0	0.0	0.0	0.0	0.0	0.0	0.0	0.0	0.0	0.0	0.0	0.0	0.0	0.0	0.0
Monitoring	0.0	0.0	0.0	0.0	0.0	0.0	0.0	0.0	0.0	0.0	0.0	0.0	0.0	0.0	0.0	0.0
<b>Subtotal</b>	<b>0.0</b>	<b>0.0</b>	<b>0.0</b>	<b>0.0</b>	<b>250.0</b>	<b>0.0</b>	<b>0.0</b>	<b>0.0</b>	<b>0.0</b>	<b>0.0</b>	<b>250.0</b>	<b>0.0</b>	<b>0.0</b>	<b>0.0</b>	<b>0.0</b>	<b>500.0</b>
DEP Regional Monitoring																
Project	Federal FY 18/19	State FY 18/19	Local FY 18/19	Federal FY 19/20	State FY 19/20	Local FY 19/20	Federal FY 20/21	State FY 20/21	Local FY 20/21	Federal FY 21/22	State FY 21/22	Local FY 21/22	Federal FY 22/23	State FY 22/23	Local FY 22/23	TOTAL
Feasibility	0.0	0.0	0.0	0.0	0.0	0.0	0.0	0.0	0.0	0.0	0.0	0.0	0.0	0.0	0.0	0.0
Design	0.0	0.0	0.0	0.0	0.0	0.0	0.0	0.0	0.0	0.0	0.0	0.0	0.0	0.0	0.0	0.0
Construction	0.0	0.0	0.0	0.0	0.0	0.0	0.0	0.0	0.0	0.0	0.0	0.0	0.0	0.0	0.0	0.0
Monitoring	0.0	250.0	0.0	0.0	0.0	0.0	0.0	250.0	0.0	0.0	0.0	0.0	0.0	250.0	0.0	750.0
<b>Subtotal</b>	<b>0.0</b>	<b>250.0</b>	<b>0.0</b>	<b>0.0</b>	<b>0.0</b>	<b>0.0</b>	<b>0.0</b>	<b>250.0</b>	<b>0.0</b>	<b>0.0</b>	<b>0.0</b>	<b>0.0</b>	<b>0.0</b>	<b>250.0</b>	<b>0.0</b>	<b>750.0</b>
<b>TOTAL</b>	<b>0.0</b>	<b>250.0</b>	<b>0.0</b>	<b>0.0</b>	<b>250.0</b>	<b>0.0</b>	<b>0.0</b>	<b>250.0</b>	<b>0.0</b>	<b>0.0</b>	<b>250.0</b>	<b>0.0</b>	<b>0.0</b>	<b>250.0</b>	<b>0.0</b>	<b>1,250.0</b>
FY TOTAL (Federal, State, Local)			<b>250.0</b>			<b>250.0</b>			<b>250.0</b>			<b>250.0</b>			<b>250.0</b>	<b>1,250.0</b>