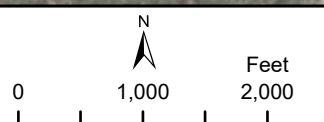


**Natural Communities (in Acres)**

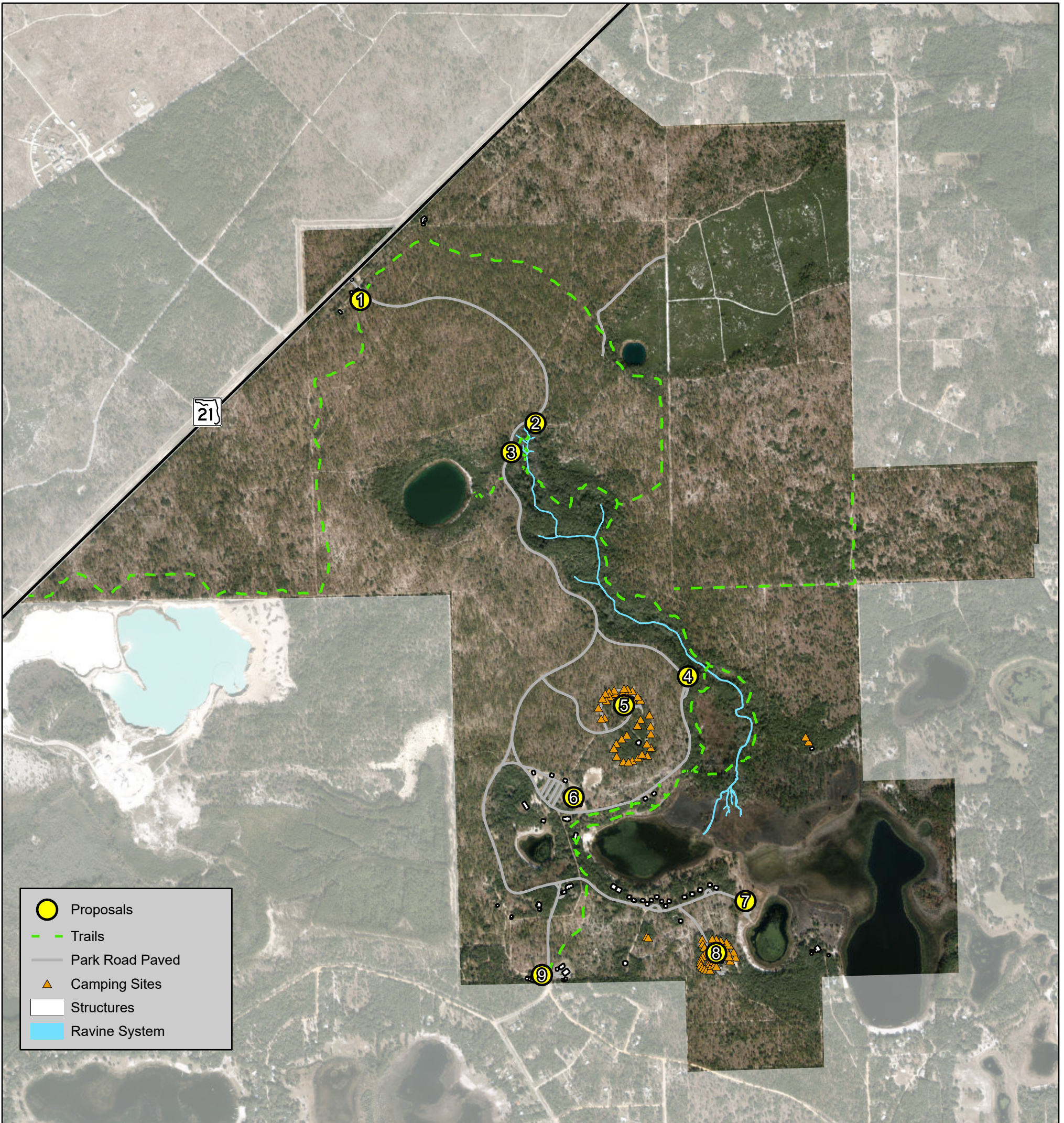
- BG - Baygall 22.96
- BM - Basin Marsh 79.63
- DM - Depression Marsh 0.56
- DV - Developed 65.90
- MF - Mesic Flatwoods 23.28
- RU - Ruderal 0.38
- SC - Scrub 134.35
- SH - Sandhill 1910.04
- SHB - Shrub Bog 0.99
- SKLK - Sinkhole Lake 23.75
- SPF - Slope Forest 46.35
- SSL - Seepage Slope 26.94
- SST - Seepage Stream 1.83
- XH - Xeric Hammock 28.90



**MIKE ROESS GOLDHEAD BRANCH STATE PARK**  
**Natural Communities - Existing Conditions**



This graphical representation is provided for informational purposes and should not be considered authoritative for navigational, engineering, legal, and other uses.



	Proposals
	Trails
	Park Road Paved
	Camping Sites
	Structures
	Ravine System

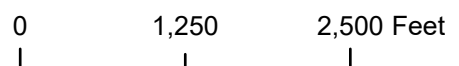
- 1** Park Entrance - Reconfigure park entrance for better functionality and relocate administration building to support area.
- 2** Ravine Overlook - No longer permit parking at overlook, and develop footpath parallel to park drive starting near the parking area at Devil's Washbasin for guests to walk to overlook area. Add interpretation.
- 3** Ravine Trailhead - Develop ADA overlook and pathway. Continue needed maintenance on concrete stairs as needed.
- 4** Mill Site Trailhead - Develop boardwalk or footpath from parking area to mitigate erosion issues. Replace metal bridge with a CCC replica footbridge. Update interpretation within kiosks
- 5** Sandhill and Turkey Oak Campground - Upgrade utilities within each site.
- 6** Lake Johnson Day Use Area - Replace recreation hall with a larger footprint, maintain all CCC structures, remove limestone pavilions. Add bathroom and new wayfinding and interpretive panels.
- 7** Big Lake Johnson Boat Ramp - Remove boat ramp as it is no longer in use and to prevent unauthorized access to lake edge. Develop nature trail from newly developed cul- du- sac, add interpretation to nature trail
- 8** Lakeview Campground - Realign the campground loop to allow for expansion of each campsites. Relocate the interpretive amphitheater to Lake Johnson Day Use Area.
- 9** Support Area - Construct new Sign Shop building and new administration building. Maintain the four CCC era buildings with coordination with the Division of Historical Resources. Create volunteer sites, add lumber shed.

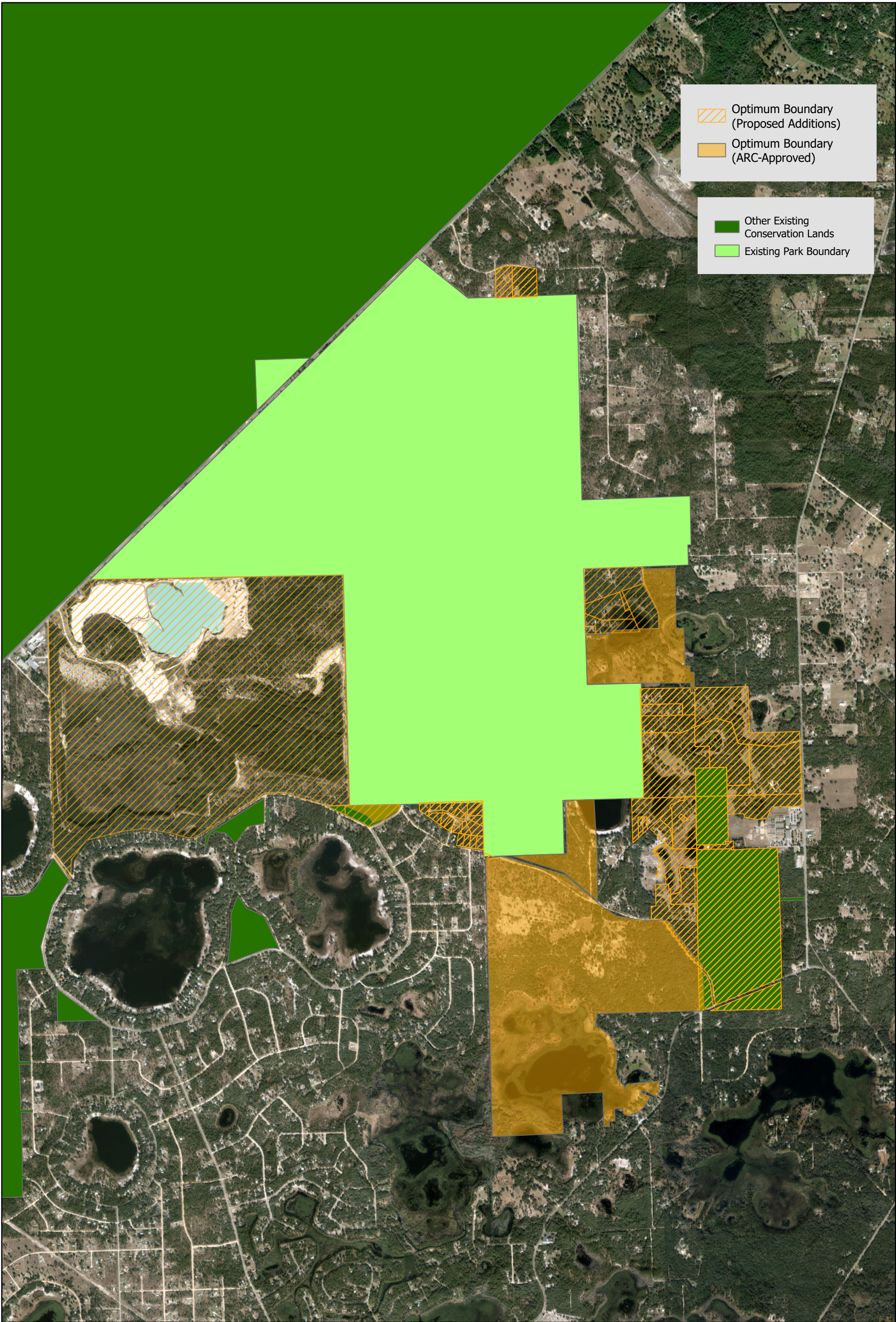
State of Florida, Maxar


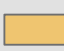




# Mike Roess Gold Head Branch State Park

Conceptual Land Use Plan





 Optimum Boundary  
 (Proposed Additions)  
 Optimum Boundary  
 (ARC-Approved)

 Other Existing  
 Conservation Lands  
 Existing Park Boundary



**Mike Roess Gold Head Branch State Park**  
 Optimum Boundary Map

0 2,000 4,000 Feet

