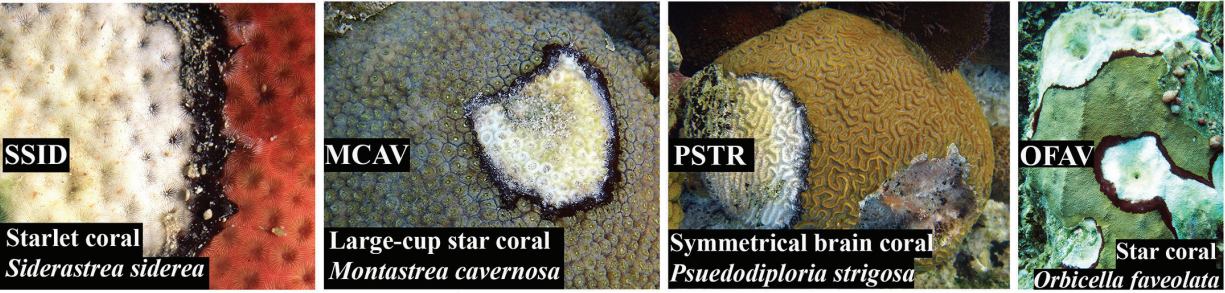
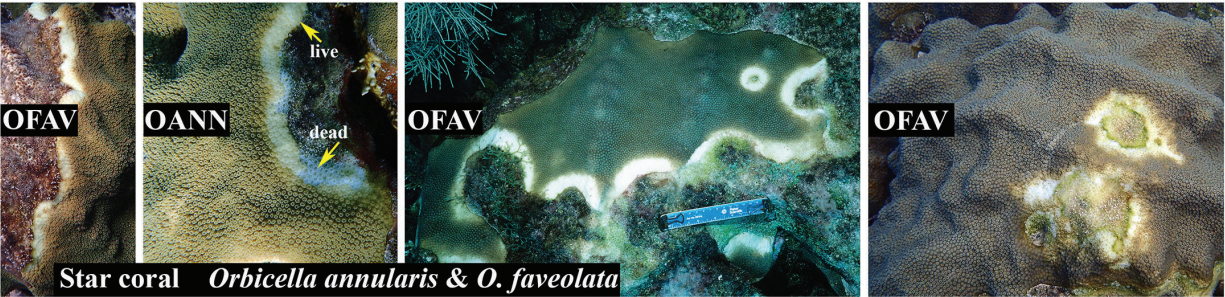


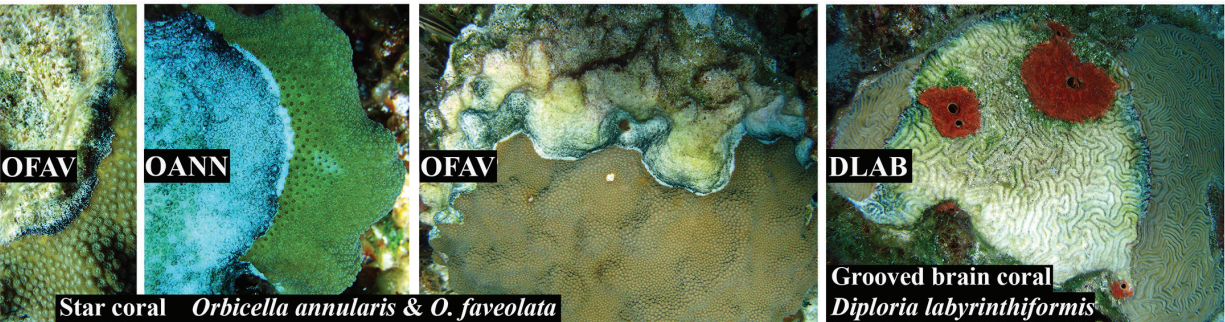
Other Coral Diseases



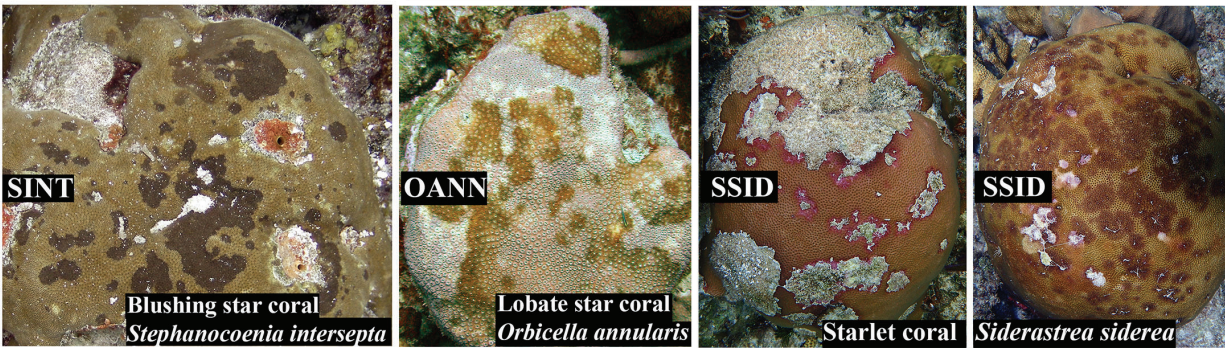
black band disease (BBD)



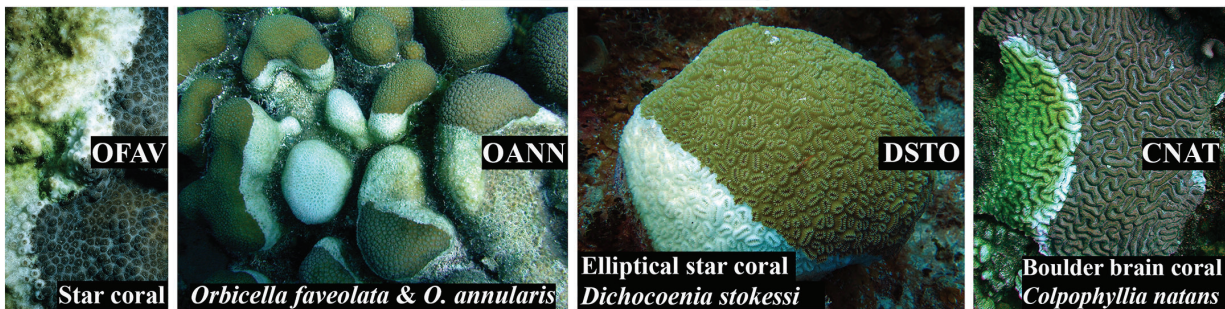
yellow blotch disease (YBD)



Caribbean ciliate infection (CCI)



dark spots disease (DSD)

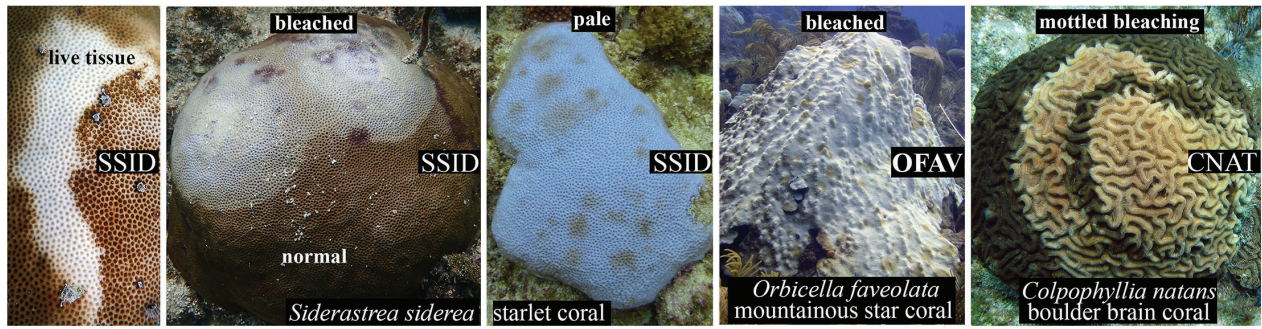


white plague (WP)

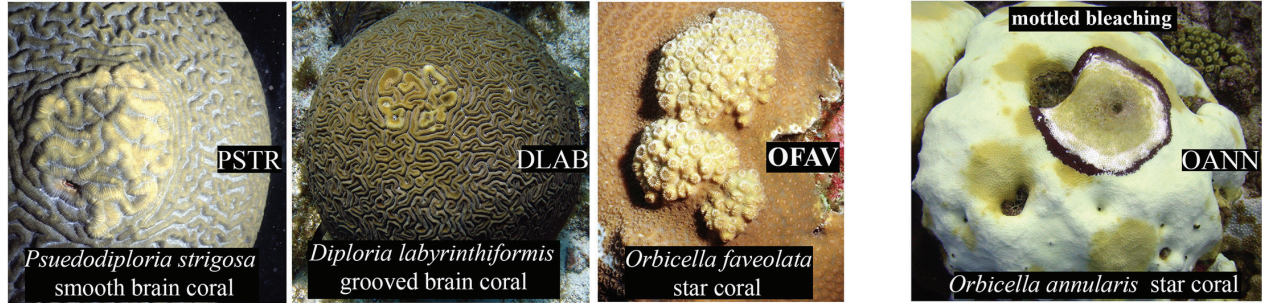
Andrew Bruckner, FKNMS



Other Conditions Affecting Corals

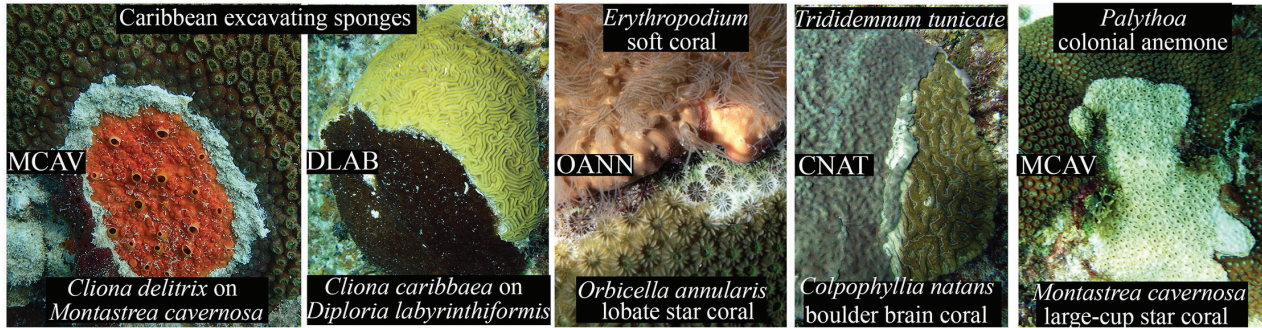


different stages of coral bleaching

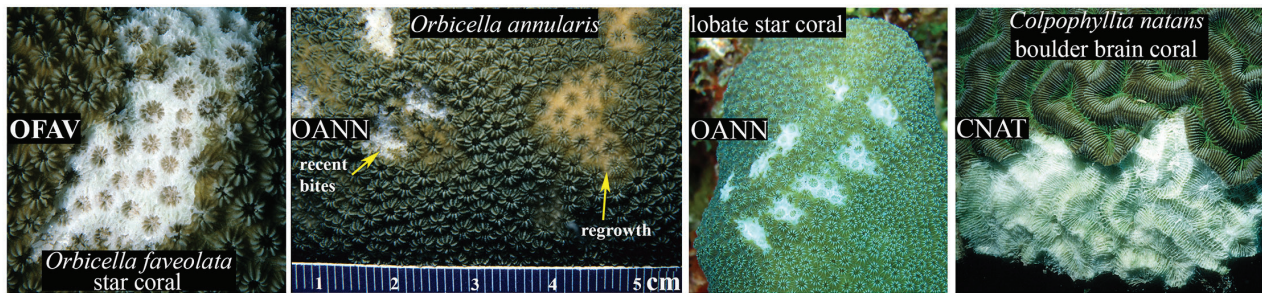


growth anomalies

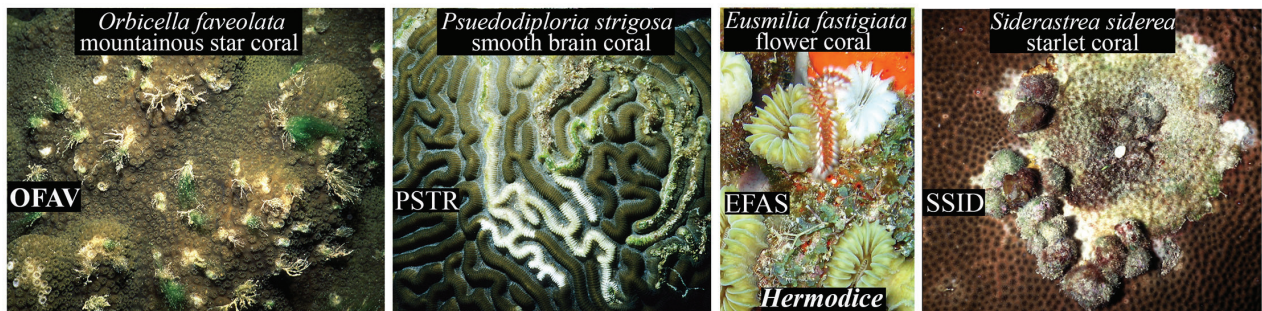
bleaching & black band disease



Overgrowth by clionid sponges, soft coral, tunicate and colonial anemone



Sparisoma viride stoplight parrotfish predation



Stegastes planifrons damsselfish ridge mortality

Hermodice fireworm predation

Coralliophila snail predation

