



DEP Information Portal



What is the Information Portal?

- **The Florida Department of Environmental Protection's Electronic Document Search Portal.**
- **Online tool to retrieve permitting and compliance records.**



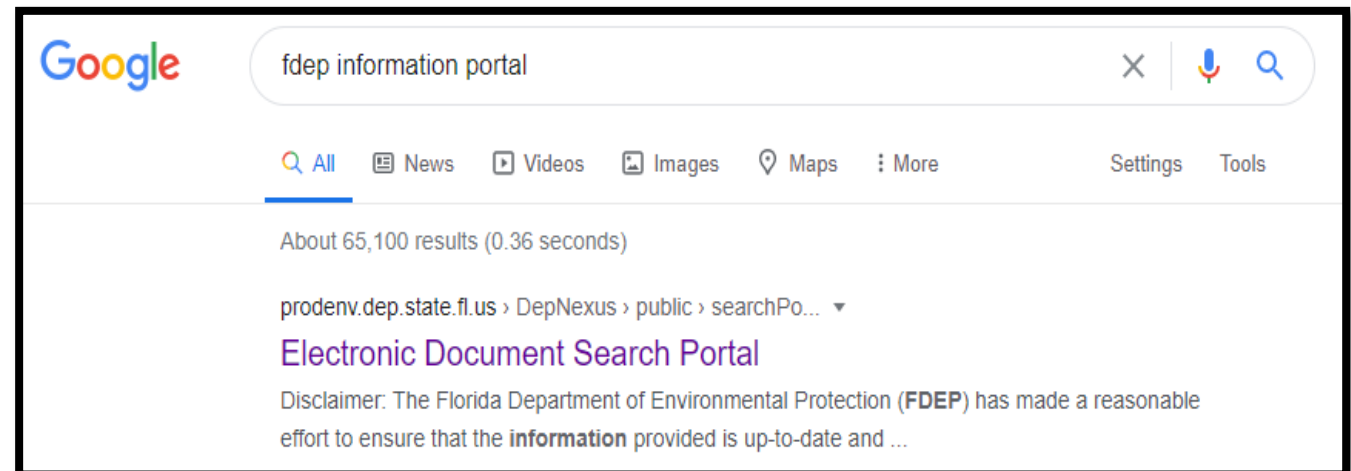
How to Access the Information Portal

Online tool can be reached at:

<https://prodenv.dep.state.fl.us/DepNexus/public/searchPortal>

OR:

Perform a search on  the internet





Searching DEP Records

- **Search for sites across program boundaries.**
- **Open documents without having to go to OCULUS.**
- **No need to know a site number to locate and view documents.**
- **Results include documents, facility data, permitting data and maps.**



Facility and Document Search Screen

- Search using the Facility Site Search or Document Search.
- Most searches are done using facility/site information.
- Searches can always be modified.
- Searches work best with minimal information (e.g., search for “Smith” instead of “John Smith”).

The screenshot displays the 'INFORMATION PORTAL' interface for 'Facility and Document Search'. The page is divided into two main sections: 'Facility Search' and 'Document Search'. Both sections include search criteria fields, hints, and a 'Change Order' button. The 'Facility Search' section includes fields for Facility/Site ID, Facility Name, Facility Address, City, Regulatory District, and County. The 'Document Search' section includes fields for Division (Air, Water, Waste), Document Type, Document Date, Date Received, Document Subject, Facility ID, Permit/Application Number, Regulatory District, and County. The 'Nexus Enterprise Solutions' logo is visible in the top right corner.

Facility Search

Facility/Site Search

Enter at least one search criterion below to access facility-related information and documents.

Hints: If you don't receive the results expected (e.g. no documents, no result), use different search criteria (e.g. Facility Name & County).
You can use the wild card '%' to help expand your search results.

Facility/Site ID:

Facility Name:

Facility Address:

City:

Regulatory District:

County:

Show All Facilities Without Documents Facilities With Documents

Sort Order

1. Facility/Site ID
2. Facility Name
3. Facility Address

Document Search

Enter at least one search criterion to generate a list of documents.

Hints: If you don't receive the results expected (e.g. no documents, no result), use different search criteria (e.g. Facility Name & County).
You can use the wild card '%' to help expand your search results.

Division: Air Water Waste

Document Type: Taxonomy

Document Date: From: To:

Date Received: From: To:

Document Subject:

Facility ID:

Permit/Application Number:

Regulatory District:

County:

Sort Order

1. Document Date
2. Document Type
3. Document Subject



Facility/Site Search Screen

- Search fields are Facility/Site ID, Facility/Site Name, Facility/Site address, City, Regulatory District and County.
- Adjust how the results are ordered to easily find the desired site.
- County property IDs may be entered in the database as part of the facility name, especially for single-family projects.

Facility and Document Search

Facility/Site Search

Enter at least one search criterion below to access facility-related information and documents.

Hints: If you don't receive the results expected (e.g. no documents, no result), use different search criteria (e.g. Facility Name & County).

You can use the wild card '%' to help expand your search results.

Facility/Site ID:

Facility Name:

Facility Address:

City:

Regulatory District:

County:

Show All Facilities Without Documents Facilities With Documents

Search Sort Order

Selectable:

- Facility/Site ID
- Facility Name
- Facility Address
- City
- County
- Regulatory District

Selected:

Sort Order

1. Facility/Site ID
2. Facility Name
3. Facility Address

Change order gives more option to search



Facility/Site Search Screen

- **Facility Name Search Tip:**
 - Use a “%” wildcard rather than spaces to achieve better search results (e.g., “%The%Orlando%Sentinel%” instead of “The Orlando Sentinel”).

Facility and Document Search

Facility/Site Search

Enter at least one search criterion below to access facility-related information and documents.

Hints: If you don't receive the results expected (e.g. no documents, no result), use different search criteria (e.g. Facility Name & County).

You can use the wild card '%' to help expand your search results.

Facility/Site ID:

Facility Name:

Facility Address:

City:

Regulatory District:

County:

Show All Facilities Without Documents Facilities With Documents



Search Results By Facility Name

Facilities Search Results

Criteria selected:

Facility Name = %the%orlando%sentinel%

Searching For = Search all facilities

For additional information, select the hyperlinks under "Data Links" where available.

- D - Provides a list of electronic documents associated with the facility.
- F - Provides a facility summary report.
- P - Provides facility-related permit information.
- M - Provides a GIS map focused on the facility.
- Q - Provides a contact for user questions and quality control.

Records on this page = 1 of 1

Your search returned these facilities:

Facility/Site Id	Facility Name	District	County	Address	City	Program	Facility Type	Data Links
AIR_0950172	THE ORLANDO SENTINEL	CD	ORANGE	633 N Orange Ave	ORLANDO	AIR	AIR	D F P M Q



Facility/Site Search Screen

- **Address Search Tip:**
 - **Use a “%” wildcard rather than spaces to achieve better search results (e.g., “%633%Orange%” instead of “633 N Orange Ave”)**

Facility and Document Search

Facility/Site Search

Enter at least one search criterion below to access facility-related information and documents.

Hints: If you don't receive the results expected (e.g. no documents, no result), use different search criteria (e.g. Facility Name & County).

You can use the wild card '%' to help expand your search results.

Facility/Site ID:

Facility Name:

Facility Address:

City:

Regulatory District:

County:

Show All Facilities Without Documents Facilities With Documents

Submit

Clear All



Search Results By Address



INFORMATION PORTAL

Nexus

Enterprise Solutions

[Search Home](#) » [Facilities Search Results](#)

Facilities Search Results

Criteria selected:

Address = %633%Orange

Searching For = Search all facilities

For additional information, select the hyperlinks under "Data Links" where available.

D - Provides a list of electronic documents associated with the facility.

F - Provides a facility summary report.

P - Provides facility-related permit information.

M - Provides a GIS map focused on the facility.

Q - Provides a contact for user questions and quality control.

Records on this page = 13 of 13

Your search returned these facilities:

Facility/Site Id	Facility Name	District	County	Address	City	Program	Facility Type	Data Links
SQG_201274	ORLANDO SENTINEL COMMUNICATIONS CO	N/A	ORANGE	633 ORANGE AVE	ORLANDO	HW	HW	Q
SQG_154924	LPM AUTO SALES	N/A	ORANGE	6337 ORANGE AVE	ORLANDO	HW	HW	Q
FLR000045369	Recreational Warehouse	CD	Orange	6333 N Orange Blossom Trl Ste 201	Orlando	HW	HW	D F M Q
FLD004081964	Orlando Sentinel Communications	CD	Orange	633 N Orange Ave	Orlando	HW	HW	D F M Q
ERIC_5870	NORTHERN DOWNTOWN ORLANDO - PART B	CD	ORANGE	633 N ORANGE AVE	ORLANDO	WC-ERIC	WC-ERIC	D Q
ERIC_5869	NORTHERN DOWNTOWN ORLANDO PART A-1900	CD	ORANGE	633 N ORANGE AVE	ORLANDO	WC-ERIC	WC-ERIC	D Q
COM_164403	ORLANDO SENTINEL, NORTHERN DOWNTOWN TCE	CD	ORANGE	633 N ORANGE AVE	ORLANDO	WC	WC-RP	F M Q
AIR_0950172	THE ORLANDO SENTINEL	CD	ORANGE	633 N Orange Ave	ORLANDO	AIR	AIR	D F M Q
9817276	ORTHOMERICA PRODUCTS INC	CD	ORANGE	6333 N ORANGE BLOSSOM TRL	ORLANDO	TK	TK	D F M Q
9802540	ORLANDO SENTINEL COMMUNICATIONS	CD	ORANGE	633 N ORANGE AVE	ORLANDO	TK	TK	D F M Q
9200478	ORLANDO SENTINEL-PARKING LOT	CD	ORANGE	633 N ORANGE AVE	ORLANDO	TK	TK	D F M Q
207-2	Northern Downtown Orlando	CD	Orange	633 North Orange Avenue	ORLANDO	WC	WC-SIS	M Q
207-1	Northern Downtown Orlando	CD	Orange	633 North Orange Avenue	ORLANDO	WC	WC-SIS	M Q

- All available addresses with 633 Orange.



Understanding Search Results

Your search returned these facilities:

Facility/Site Id	Facility Name	District	County	Address	City	Program	Facility Type	Data Links
SQG_201274	ORLANDO SENTINEL COMMUNICATIONS CO	N/A	ORANGE	633 ORANGE AVE	ORLANDO	HW	HW	Q
SQG_154924	LPM AUTO SALES	N/A	ORANGE	6337 ORANGE AVE	ORLANDO	HW	HW	Q
FLR000045369	Recreational Warehouse	CD	Orange	6333 N Orange Blossom Trl Ste 201	Orlando	HW	HW	D F M Q
FLD004081964	Orlando Sentinel Communications	CD	Orange	633 N Orange Ave	Orlando	HW	HW	D F M Q
ERIC_5870	NORTHERN DOWNTOWN ORLANDO - PART B	CD	ORANGE	633 N ORANGE AVE	ORLANDO	WC-ERIC	WC-ERIC	D Q
ERIC_5869	NORTHERN DOWNTOWN ORLANDO PART A-1900	CD	ORANGE	633 N ORANGE AVE	ORLANDO	WC-ERIC	WC-ERIC	D Q
COM_164403	ORLANDO SENTINEL, NORTHERN DOWNTOWN TCE	CD	ORANGE	633 N ORANGE AVE	ORLANDO	WC	WC-RP	F M Q
AIR_0950172	THE ORLANDO SENTINEL	CD	ORANGE	633 N Orange Ave	ORLANDO	AIR	AIR	D F P M Q
9817276	ORTHOMERICA PRODUCTS INC	CD	ORANGE	6333 N ORANGE BLOSSOM TRL	ORLANDO	TK	TK	D F M Q
9802540	ORLANDO SENTINEL COMMUNICATIONS	CD	ORANGE	633 N ORANGE AVE	ORLANDO	TK	TK	D F M Q
9200478	ORLANDO SENTINEL-PARKING LOT	CD	ORANGE	633 N ORANGE AVE	ORLANDO	TK	TK	D F M Q
207-2	Northern Downtown Orlando	CD	Orange	633 North Orange Avenue	ORLANDO	WC	WC-SIS	M Q
207-1	Northern Downtown Orlando	CD	Orange	633 North Orange Avenue	ORLANDO	WC	WC-SIS	M Q

- The search result includes the DEP facility/site ID number, facility name, district, county, address, city, program and facility type.
- The results cannot be sorted or reprioritized by these titles after the search is done. However, the user may copy and paste the results into an Excel spreadsheet if desired.
- Use the Find tool in your browser to find a key word or phrase if the list of results are lengthy.



Understanding Hyperlinks

Data Links are at the far right

- Results will include links to information obtained from DEP's various databases.
- Click on the "D" link on the results page to see a list of documents related to your search which have been saved into DEP's online database called OCULUS.

Your search returned these facilities:

Facility/Site Id	Facility Name	District	County	Address	City	Program	Facility Type	Data Links
SQG_201274	ORLANDO SENTINEL COMMUNICATIONS CO	N/A	ORANGE	633 ORANGE AVE	ORLANDO	HW	HW	Q
SQG_154924	LPM AUTO SALES	N/A	ORANGE	6337 ORANGE AVE	ORLANDO	HW	HW	Q
FLR00045369	Recreational Warehouse	CD	Orange	6333 N Orange Blossom Trl Ste 201	Orlando	HW	HW	D F M Q
FLD004081964	Orlando Sentinel Communications	CD	Orange	633 N Orange Ave	Orlando	HW	HW	D F M Q
ERIC_5870	NORTHERN DOWNTOWN ORLANDO - PART B	CD	ORANGE	633 N ORANGE AVE	ORLANDO	WC-ERIC	WC-ERIC	D Q
ERIC_5869	NORTHERN DOWNTOWN ORLANDO PART A-1900	CD	ORANGE	633 N ORANGE AVE	ORLANDO	WC-ERIC	WC-ERIC	D Q
COM_164403	ORLANDO SENTINEL, NORTHERN DOWNTOWN TCE	CD	ORANGE	633 N ORANGE AVE	ORLANDO	WC	WC-RP	F M Q
AIR_0950172	THE ORLANDO SENTINEL	CD	ORANGE	633 N Orange Ave	ORLANDO	AIR	AIR	D F P M Q
9817276	ORTHOMERICA PRODUCTS INC	CD	ORANGE	6333 N ORANGE BLOSSOM TRL	ORLANDO	TK	TK	D F M Q
9802540	ORLANDO SENTINEL COMMUNICATIONS	CD	ORANGE	633 N ORANGE AVE	ORLANDO	TK	TK	D F M Q
9200478	ORLANDO SENTINEL-PARKING LOT	CD	ORANGE	633 N ORANGE AVE	ORLANDO	TK	TK	D F M Q
207-2	Northern Downtown Orlando	CD	Orange	633 North Orange Avenue	ORLANDO	WC	WC-SIS	M Q
207-1	Northern Downtown Orlando	CD	Orange	633 North Orange Avenue	ORLANDO	WC	WC-SIS	M Q

For additional information, select the hyperlinks under "Data Links" where available.

- D - Provides a list of electronic documents associated with the facility.
- F - Provides a facility summary report.
- P - Provides facility-related permit information.
- M - Provides a GIS map focused on the facility.
- Q - Provides a contact for user questions and quality control.

Facility Type	Data Links
HW	Q
HW	Q
HW	D F M Q
HW	D F M Q
WC-ERIC	D Q
WC-ERIC	D Q
WC-RP	F M Q
AIR	D F P M Q
TK	D F M Q
TK	D F M Q
TK	D F M Q
WC-SIS	M Q
WC-SIS	M Q



Search Results In OCULUS

INFORMATION PORTAL **Nexus**
Enterprise Solutions

Criteria selected:
 Facility ID = AIR_0950172
 Facility Details:
 Program = AIR
 Facility Name = THE ORLANDO SENTINEL
 Address = 633 N Orange Ave
 City = ORLANDO
 District/County = CD / ORANGE

Records on this page = 23 of 23

Your search returned these documents available online from DEP's unrestricted EDMS catalogs:
 Click on the [View](#) link below to open a specific document.

[Export CSV Data](#)

Document Date	Document Type	Document Subject	Permit / Application Number	File Type and Size	View
09-05-2018	SITE PHOTOS	FACILITY PRESSES PHOTOS.	/	.pdf - 529.2 KB	
09-05-2018	INSPECTION RELATED	DRIVE BY INSPECTION.	/	.pdf - 18.5 KB	
05-17-2017	NONCOMPLIANCE RELATED	FRV CHECKLIST	/	.pdf - 101.2 KB	
04-14-2017	PERMIT - FINAL	FINAL PERMIT	0950172007AO / 0950172007	.pdf - 907.8 KB	
04-14-2017	OUTGOING CORRESPONDENCE	SIGNATURE RECIPIENT INFORMATION	/ 0950172007	.pdf - 448.5 KB	
04-12-2017	INCOMING CORRESPONDENCE	RESPONSE TO COMPLIANCE ASSISTANCE OFFER.	/	.pdf - 63.1 KB	
04-12-2017	COMPLETENESS REVIEW RELATED	COMPLETENESS REVIEW NOTES	/ 0950172007	.pdf - 41.6 KB	
04-07-2017	OUTGOING CORRESPONDENCE	COMPLIANCE ASSISTANCE OFFER 04-07-2017	/	.pdf - 317.7 KB	
03-30-2017	PERMIT APPLICATION RELATED	APPLICATION	/ 0950172007	.pdf - 2.6 MB	
04-19-2016	INSPECTION RELATED	FINAL DRAFT INSPECTION FORM COMPLETE	/	.pdf - 55.2 KB	
04-14-2016	INSPECTION RELATED	ANNUAL RECORDKEEPING.	/	.pdf - 320.1 KB	
04-17-2015	INSPECTION RELATED	FINAL DRAFT INSPECTION FORM	/	.pdf - 44.6 KB	
04-14-2015	INSPECTION RELATED	ANNUAL RECORDS INSPECTION.	/	.pdf - 2.5 MB	
04-12-2012	REVIEW COMMENTS	OCEPD - 0950172-006-AO - INTEROFFICE MEMO - FINAL AIR OPERATION PERMIT	/	.pdf - 191.1 KB	
04-12-2012	PERMIT - FINAL	0950172 - 006-AO - FINAL AIR OPERATION PERMIT	/	.pdf - 7.0 MB	
04-12-2012	PERMIT - FINAL	0950172 - 006-AO	/	.pdf - 7.0 MB	
09-12-2011	REVIEW COMMENTS	OCEPD 0950172-005-AC - INTEROFFICE MEMO - FINAL - FACILITY-WIDE CONSTRUCTION PERMIT	0950172005AC / 0950172005	.pdf - 18.2 KB	
09-12-2011	PERMIT - FINAL	FAC ID 0950172 - 005-AC - FINAL PERMIT	/	.pdf - 1.3 MB	
09-12-2011	PERMIT - FINAL	0950172-005-AC - FINAL - FACILITY-WIDE CONSTRUCTION PERMIT	0950172005AC / 0950172005	.pdf - 1.3 MB	
08-15-2011	REVIEW COMMENTS	OCEPD 0950172-005-AC - INTEROFFICE MEMO - DRAFT - FACILITY-WIDE CONSTRUCTION PERMIT	0950172005AC / 0950172005	.pdf - 19.5 KB	
08-15-2011	PERMIT - DRAFT RELATED	0950172-005-AC - DRAFT - FACILITY-WIDE CONSTRUCTION PERMIT	0950172005AC / 0950172005	.pdf - 2.1 MB	
09-16-1996	PERMIT - FINAL	PERMIT 0950172	/	.pdf - 14.2 MB	
04-16-1996	PERMIT APPLICATION RELATED	AIR CONSTRUCTION MANDATE	/	.pdf - 160.1 MB	

APPLICATION FOR NON-TITLE V AIR PERMIT RENEWAL
 See Instructions for Form No. 62-210.900(4)

I. APPLICATION INFORMATION

Identification of Facility

1. Facility Owner/Company Name: Orlando Sentinel Communications, LLC	
2. Site Name: The Orlando Sentinel	
3. Facility Identification Number: 0950172	4. Facility Status Code: Active

Application Contact

1. Name and Title of Application Contact: Frank Grandinette EHS / Press Director
2. Application Contact Mailing Address:

Click on the red arrow to the view document

Note: The OCULUS system is another DEP online database open for public access and tutorial is available on access and use.



Document Details

Export CSV Data

File Type and Size	View
.pdf - 529.2 KB	▶
.pdf - 18.5 KB	▶
.pdf - 101.2 KB	▶
.pdf - 907.8 KB	▶
.pdf - 448.5 KB	▶
.pdf - 63.1 KB	▶
.pdf - 41.6 KB	▶
.pdf - 317.7 KB	▶
.pdf - 2.6 MB	▶
.pdf - 55.2 KB	▶
.pdf - 320.1 KB	▶
.pdf - 44.6 KB	▶
.pdf - 2.5 MB	▶
.pdf - 191.1 KB	▶
.pdf - 7.0 MB	▶
.pdf - 7.0 MB	▶
.pdf - 18.2 KB	▶
.pdf - 1.3 MB	▶
.pdf - 1.3 MB	▶
.pdf - 19.5 KB	▶
.pdf - 2.1 MB	▶
.pdf - 14.2 MB	▶
.pdf - 169.1 MB	▶

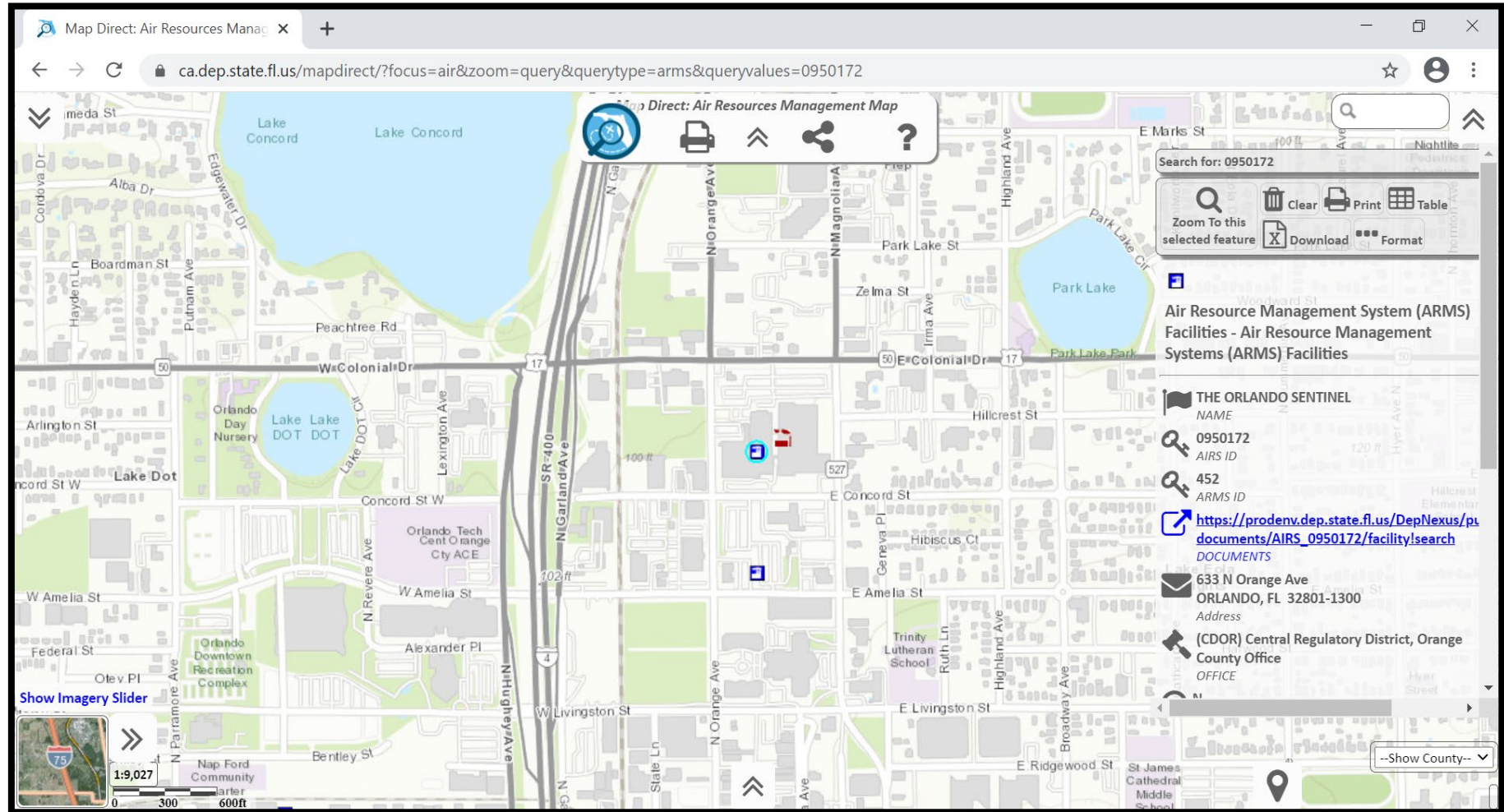
Tips:

- Most documents will be in a PDF format, but occasionally a document will appear in another format.
- Save the document list to an excel spreadsheet by clicking on the “Export CSV Data” button.
- If the document size is large, it may take some time for the document to open. Going to OCULUS directly to locate and open documents could take less time in some cases.



Geographic Location

- Click on the “M” link to go to Map Direct, DEP’s online GIS mapping system, to see the location of the project site.
- Tip – using Chrome, Firefox or Edge browsers will give you better results.



Note: The Map Direct system is another DEP online database open for public access and tutorial is available on access and use



Document Search Screen

By Division and Facility ID Number:

Document Search

Enter at least one search criterion to generate a list of documents.

Hints: If you don't receive the results expected (e.g. no documents, no result), use different search criteria (e.g. Facility Name & County).

You can use the wild card '%' to help expand your search results.

Division: Air Water Waste

Document Type: Taxonomy

Document Date: From: To:

Date Received: From: To:

Document Subject:

Facility ID:

Permit/Application Number:

Regulatory District: ▼

County: ▼

Sort Order

1. Document Date
2. Document Type
3. Document Subject

“Change Order” provides more search options.



Understanding Search Results

- The search result includes the program, DEP facility/site ID number, facility/site name, and document type.

Search Home » Document Search Results

Document Search Results

Criteria selected:
 AIR = true
 Facility ID = AIR_0950172
 District = CD
 County = Orange

Records on this page = 23 of 23

Your search returned these documents available online from DEP's unrestricted EDMS catalogs:
 Click on the View link below to open a specific document.

Clicking on the looking glass gives the option to review document dates, address, subject etc., before viewing.

Program	Facility/Site ID	Facility/Site Name	Document Type	Details
AIR	AIR_0950172	THE ORLANDO SENTINEL	SITE PHOTOS	
AIR	AIR_0950172	THE ORLANDO SENTINEL	INSPECTION RELATED	
AIR	AIR_0950172	THE ORLANDO SENTINEL	NONCOMPLIANCE RELATED	
AIR	AIR_0950172	THE ORLANDO SENTINEL	PERMIT - FINAL	
AIR	AIR_0950172	THE ORLANDO SENTINEL	OUTGOING CORRESPONDENCE	
AIR	AIR_0950172	THE ORLANDO SENTINEL	INCOMING CORRESPONDENCE	
AIR	AIR_0950172	THE ORLANDO SENTINEL	COMPLETENESS REVIEW RELATED	
AIR	AIR_0950172	THE ORLANDO SENTINEL	OUTGOING CORRESPONDENCE	
AIR	AIR_0950172	THE ORLANDO SENTINEL	PERMIT APPLICATION RELATED	
AIR	AIR_0950172	THE ORLANDO SENTINEL	INSPECTION RELATED	
AIR	AIR_0950172	THE ORLANDO SENTINEL	INSPECTION RELATED	
AIR	AIR_0950172	THE ORLANDO SENTINEL	INSPECTION RELATED	
AIR	AIR_0950172	THE ORLANDO SENTINEL	INSPECTION RELATED	
AIR	AIR_0950172	THE ORLANDO SENTINEL	REVIEW COMMENTS	
AIR	AIR_0950172	THE ORLANDO SENTINEL	PERMIT - FINAL	
AIR	AIR_0950172	THE ORLANDO SENTINEL	PERMIT - FINAL	
AIR	AIR_0950172	THE ORLANDO SENTINEL	REVIEW COMMENTS	
AIR	AIR_0950172	THE ORLANDO SENTINEL	PERMIT - FINAL	
AIR	AIR_0950172	THE ORLANDO SENTINEL	PERMIT - FINAL	
AIR	AIR_0950172	THE ORLANDO SENTINEL	REVIEW COMMENTS	
AIR	AIR_0950172	THE ORLANDO SENTINEL	PERMIT - DRAFT RELATED	
AIR	AIR_0950172	THE ORLANDO SENTINEL	PERMIT - FINAL	
AIR	AIR_0950172	THE ORLANDO SENTINEL	PERMIT APPLICATION RELATED	

Permit Number: 0950172007AO
 Application Number: 0950172007
 Document Date: 04-14-2017
 Date Received: 04-14-2017
 Facility/Site Address: 633 N Orange Ave
 City: ORLANDO
 District/County: CD / ORANGE
 Subject: FINAL PERMIT
 File Type and Size: pdf - 907.8 KB

Export CSV Data



Understanding Search Results

Search Home » Document Search Results

Document Search Results

Criteria selected:
 AIR = true
 Facility ID = AIR_0950172
 District = CD
 County = Orange

Records on this page = 23 of 23

Your search returned these documents available online from DEP's unrestricted EDMS catalogs:
 Click on the View link below to open a specific document.

Program	Facility/Site ID	Facility/Site Name	Document Type	View	More Details
AIR	AIR_0950172	THE ORLANDO SENTINEL	SITE PHOTOS		
AIR	AIR_0950172	THE ORLANDO SENTINEL	INSPECTION RELATED		
AIR	AIR_0950172	THE ORLANDO SENTINEL	NONCOMPLIANCE RELATED		
AIR	AIR_0950172	THE ORLANDO SENTINEL	PERMIT - FINAL		
AIR	AIR_0950172	THE ORLANDO SENTINEL	OUTGOING CORRESPONDENCE		
AIR	AIR_0950172	THE ORLANDO SENTINEL	INCOMING CORRESPONDENCE		
AIR	AIR_0950172	THE ORLANDO SENTINEL	COMPLETENESS REVIEW RELATED		
AIR	AIR_0950172	THE ORLANDO SENTINEL	OUTGOING CORRESPONDENCE		
AIR	AIR_0950172	THE ORLANDO SENTINEL	PERMIT APPLICATION RELATED		
AIR	AIR_0950172	THE ORLANDO SENTINEL	INSPECTION RELATED		
AIR	AIR_0950172	THE ORLANDO SENTINEL	INSPECTION RELATED		
AIR	AIR_0950172	THE ORLANDO SENTINEL	INSPECTION RELATED		
AIR	AIR_0950172	THE ORLANDO SENTINEL	INSPECTION RELATED		
AIR	AIR_0950172	THE ORLANDO SENTINEL	REVIEW COMMENTS		
AIR	AIR_0950172	THE ORLANDO SENTINEL	PERMIT - FINAL		
AIR	AIR_0950172	THE ORLANDO SENTINEL	PERMIT - FINAL		
AIR	AIR_0950172	THE ORLANDO SENTINEL	REVIEW COMMENTS		
AIR	AIR_0950172	THE ORLANDO SENTINEL	PERMIT - FINAL		
AIR	AIR_0950172	THE ORLANDO SENTINEL	PERMIT - FINAL		
AIR	AIR_0950172	THE ORLANDO SENTINEL	PERMIT - FINAL		
AIR	AIR_0950172	THE ORLANDO SENTINEL	REVIEW COMMENTS		
AIR	AIR_0950172	THE ORLANDO SENTINEL	PERMIT - DRAFT RELATED		
AIR	AIR_0950172	THE ORLANDO SENTINEL	PERMIT - FINAL		
AIR	AIR_0950172	THE ORLANDO SENTINEL	PERMIT APPLICATION RELATED		

[Export CSV Data](#)



ENVIRONMENTAL PROTECTION DIVISION
 Lori Cunniff, CEP, CHMM, Deputy Director
 Community, Environmental and Development Services Department
 3165 McCrory Place, Suite 200
 Orlando, FL 32803
 407-836-1400 • Fax 407-836-1499
 www.ocfl.net

CERTIFIED MAIL: 91 7108 2133 3939 2120 1087

PERMITTEE

Orlando Sentinel Communications, LLC Air Permit No. 0950172-007-AO
 633 N. Orange Ave. Air Operation Permit
 Orlando, FL 32801-1300

Authorized Representative: Orlando Sentinel
 Frank Grandinette, EHS/Press Director Orange County, Florida

PROJECT

This is the final air operation permit, which authorizes the operation of Orlando Sentinel, which is a Newspaper: Publishing, or Publishing and Printing facility (Standard Industrial Classification No. 2711). This project renews Permit No. 0950172-006-AO. The facility is located in Orange County at 633 N. Orange Ave. in Orlando, Florida. The Latitude / Longitude coordinates are: 28° 33' 06" North / 81° 22' 42" West. The UTM coordinates are Zone 17, 462.99 kilometers (km) East, and 3,158.37 km North.

Click on the red arrow to the view document



Feedback Link and Disclaimer

- The “F” and “P” links access DEP’s internal application tracking databases and are not accessible to the public at this time.
- Choosing the “Q” link allows the user to provide feedback and submit questions to DEP.
- Search results can be limited by the structure of historical database operating systems, historic protocols of data entry and typographical errors.

DEP includes the following disclaimer:

The Florida Department of Environmental Protection (FDEP) makes every reasonable effort to ensure that all information provided is current and comprehensive. However, the accuracy and completeness of the data cannot be guaranteed. If you believe additional items might exist; you may search for any specific or missing information by searching the database provided here.



Questions or Need Additional Assistance?

South District
239-344-5600

SouthDistrict@FloridaDEP.gov

Southeast District
561-681-6600

Southeast.District@FloridaDEP.gov