

ITEM 6:

Consider whether an approximately 1.61-acre, 20-foot wide, private underground wastewater force main within Rainbow Springs State Park and the Marjorie Harris Carr Cross Florida Greenway State Recreation and Conservation Area, is consistent with the Board of Trustees' Linear Facilities Policy.

LOCATION:

Marion County

Section 30 / Township 16S / Range 19E

APPLICANT:

Florida Government Utility Authority

DSL STAFF REMARKS:

This request is a component of the Applicant's project that is intended to remove a failing package plant and reroute wastewater from the to-be-abandoned package plant to the local City of Dunnellon wastewater treatment facility. The Applicant is requesting the easement to construct, operate and maintain an underground wastewater force main. The new force main, installed by open cut trench, will tie into the existing force main near the Rio Vista master lift station and extend eastward then southward and tie into the new force main on CR 484.

The Rainbow Springs State Park and the Marjorie Harris Carr Cross Florida Greenway State Recreation and Conservation Area (Parks) are managed by the Division of Recreation and Parks (DRP) under Lease numbers 3900 and 4013 respectively, and were acquired by the BOT in 1992 by final judgment and is designated for conservation and recreation purposes. DRP provided a letter of no objection on June 14, 2022.

The Division of Historical Resources reviewed the project and requested the easement include a special condition requiring the Applicant to have a professional cultural resources assessment survey conducted on the requested easement area and obtain a 1A-32 permit prior to construction.

Avoidance:

Alternate locations for the requested easement were explored by the Applicant who determined there were no other alternative routes available.

Minimizing Impacts:

Impacts to the Parks are minimal. This project is intended to improve water quality in the Rainbow Springs first magnitude springs recharge basin, as well as its surface waters and improving the water quality in the aquifer, Rainbow River and Lake Rousseau by reducing nutrient loading by taking the off-line, defunct package plant and sending wastewater to a municipal wastewater treatment facility. There are no imperiled or listed species within the requested easement area.

Compensation:

An easement fee will be paid by the Applicant based on the appraised market value and to satisfy the additional compensation per the BOT's linear facilities policy, the Applicant will provide wastewater connections to a central sewer system for the benefit of the Rainbow Springs State Park campground.

DSL STAFF RECOMMENDATION:

Approve the easement.

ARC RECOMMENDATION:

APPROVE

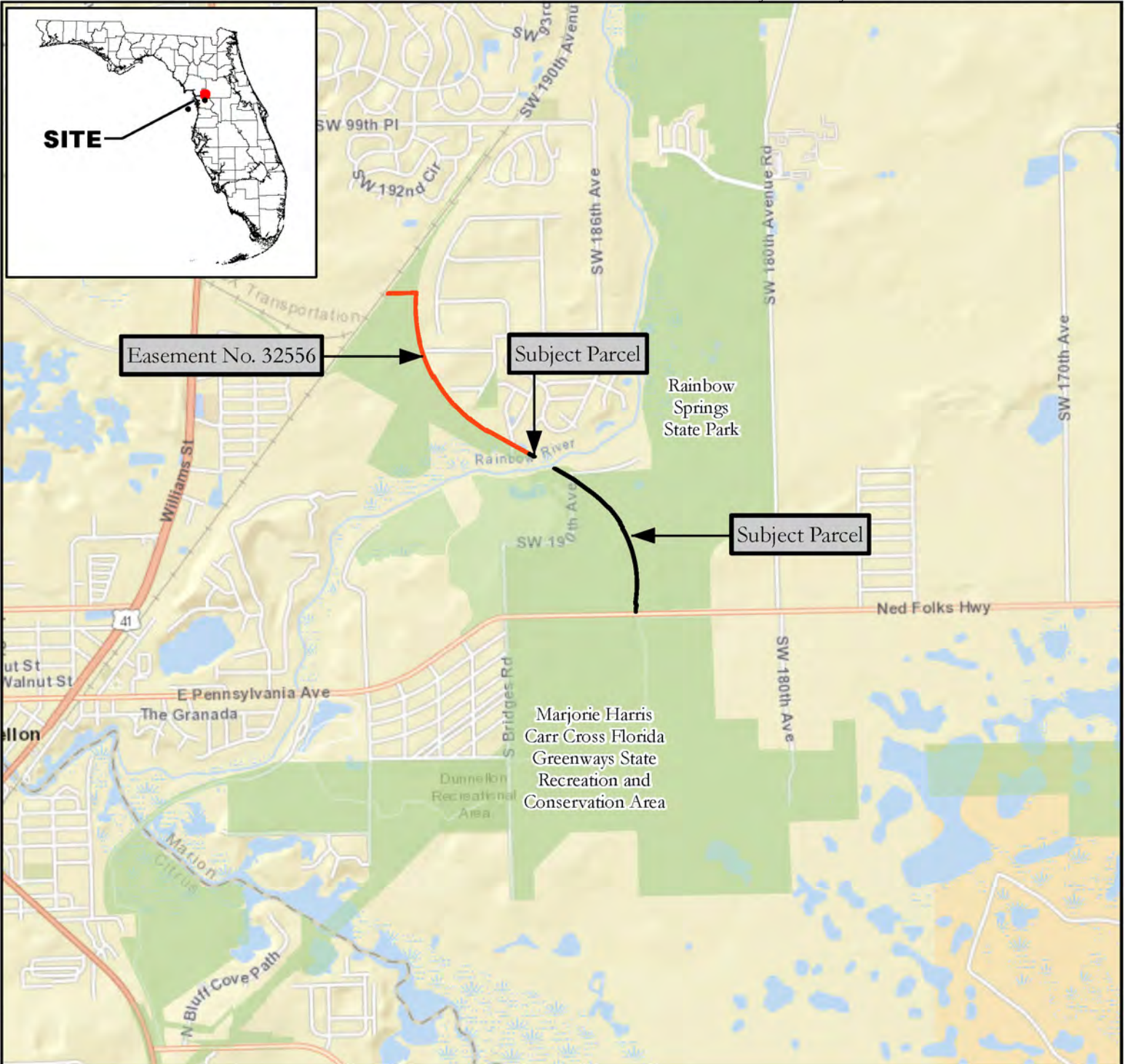
APPROVE WITH MODIFICATIONS: _____

DEFER

WITHDRAW

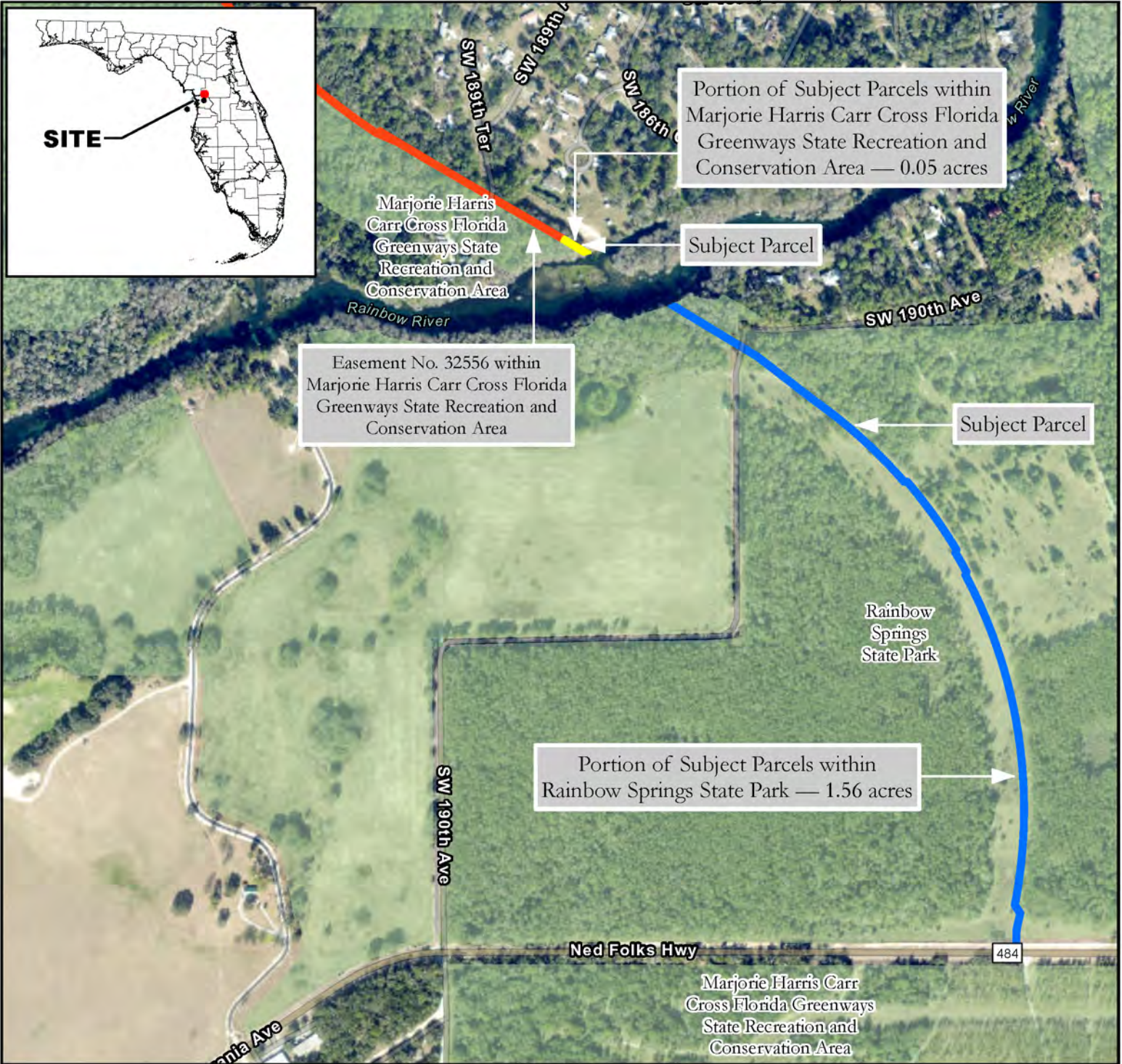
NOT APPROVE

OTHER _____

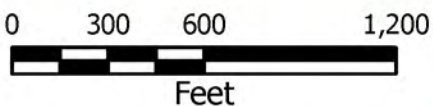


Easement No. 33480

Marion County, Florida



- Portion of Subject Parcels within Cross Florida Greenways
- Portion of Subject Parcels within Rainbow Springs State Park
- Easement No. 32556 within Cross Florida Greenways
- State Managed Conservation Lands



Easement No. 33480

Marion County, Florida

In re Florida Government Utility Authority Easement No. 33480
**SKETCH OF DESCRIPTION FOR:
 FLORIDA GOVERNMENTAL UTILITY AUTHORITY**

**SHEET 1 OF 3 ONE IS NOT COMPLETE
 WITHOUT THE OTHER**

**SEE SHEET 2 OF 3 FOR DESCRIPTION
 SEE SHEET 3 OF 3 FOR SKETCH OF DESCRIPTION**

NOTES:

1. DATE OF SKETCH: JULY 13, 2022
2. SUBJECT TO RIGHTS OF WAY, RESTRICTIONS, EASEMENTS AND RESERVATIONS OF RECORD.
3. PUBLIC RECORDS NOT SEARCHED BY R.M. BARRINEAU & ASSOCIATES, INC.
4. BEARINGS AND STATE PLANE COORDINATES ARE BASED ON FLORIDA WEST GRID NAD-83 (CORS96)(EPOCH:2002.0000), BASED ON TRIMBLE VIRTUAL REFERENCE STATION NETWORK.
5. ADDITIONS OR DELETIONS TO SURVEY MAPS BY OTHER THAN THE SIGNING PARTY OR PARTIES IS PROHIBITED WITHOUT WRITTEN CONSENT OF THE SIGNING PARTY OR PARTIES.
6. THIS SKETCH HAS BEEN PREPARED FOR THE EXCLUSIVE BENEFIT OF THE PARTY(IES) NAMED HEREON, AND SHALL NOT BE DUPLICATED OR RELIED UPON BY ANY OTHER INDIVIDUAL OR ENTITY WITHOUT AUTHORIZATION FROM R.M. BARRINEAU & ASSOCIATES, INC.

***NOTE* ~ THIS IS NOT A SURVEY!**

SURVEYOR'S CERTIFICATION:

I HEREBY CERTIFY THAT THE SKETCH REPRESENTED HEREON MEETS THE STANDARDS OF PRACTICE AS SET FORTH BY THE FLORIDA BOARD OF PROFESSIONAL SURVEYORS AND MAPPERS IN CHAPTER 5J-17.050-052, FLORIDA ADMINISTRATIVE CODE, PURSUANT TO SECTION 472.027, FLORIDA STATUTES.

7/13/2022

SIGNATURE DATE



TRAVIS P. BARRINEAU, P.S.M. - LS 6897
 OF R.M. BARRINEAU & ASSOCIATES, INC.

TRAVIS@RMBARRINEAU.COM

NOT VALID WITHOUT THE SIGNATURE AND THE ORIGINAL RAISED SEAL OF A FLORIDA LICENSED SURVEYOR AND MAPPER



R.M. BARRINEAU
AND ASSOCIATES
 PROFESSIONAL SURVEYORS & MAPPERS
 Oakhurst Professional Park + 1309 S.E. 25th Loop+Suite 103+Ocala, FLORIDA 34471
 PHONE (352) 622-3133 + FAX (352) 389-3771 + www.rmBarrineau.com
 REGINALD M. BARRINEAU, P.S.M. - FOUNDER + CERTIFICATE OF AUTHORIZATION NO. LB 5091
 TRAVIS P. BARRINEAU, P.S.M. - LS 6897

August 2022 ARC Meeting

DRAWN:	T.P.B	J.O.# 20196
REVISED:		DWG.# 20196 SK_R EASE
CHECKED:	T.P.B.	NORTH
APPROVED:	T.P.B.	REF:
SCALE: 1" = 100'		COPYRIGHT © JULY 2022

In re: Florida Government Utility Authority Easement No. 33480
**SKETCH OF DESCRIPTION FOR:
 FLORIDA GOVERNMENTAL UTILITY AUTHORITY**

DESCRIPTION:

A PORTION OF THE N.W. 1/4 SECTION 30, TOWNSHIP 16 SOUTH, RANGE 19 EAST MARION COUNTY, FLORIDA BEING MORE PARTICULARLY DESCRIBED AS FOLLOWS:

COMMENCE AT THE S.E. CORNER OF THE S.W. 1/4 OF THE N.W 1/4 OF SAID SECTION 30; THENCE ALONG THE SOUTH BOUNDARY OF THE N.W. 1/4 OF SAID SECTION 30, S.88°33'05"W., A DISTANCE OF 58.21 FEET; THENCE DEPARTING SAID SOUTH BOUNDARY, N.58°50'01"W., A DISTANCE 671.10 FEET TO A POINT ON THE NORTHERLY EDGE OF WATER (AS OF DECEMBER 18, 2020) OF THE RAINBOW RIVER, SAID POINT ALSO BEING THE POINT OF BEGINNING. THENCE ALONG THE NORTHERLY EDGE OF WATER OF SAID RAINBOW RIVER, S.75°56'15"W., A DISTANCE OF 28.17 FEET; THENCE DEPARTING SAID NORTHERLY EDGE OF WATER, N.58°50'01"W., A DISTANCE OF 109.31 FEET: THENCE N.30°12'36"E., A DISTANCE OF 20.00 FEET; THENCE S.58°50'01"E., A DISTANCE OF 129.48 FEET TO THE POINT OF BEGINNING.

APPROVED
 By Jorge G. Alonso at 1:31 pm, Jul 14, 2022

**SHEET 2 OF 3
 ONE IS NOT COMPLETE WITHOUT THE OTHER
 SEE SHEET 1 OF 3 FOR NOTES & CERTIFICATION
 SEE SHEET 3 OF 3 FOR SKETCH OF DESCRIPTION**

***NOTE* ~ THIS IS NOT A SURVEY!**

LEGEND UNLESS OTHERWISE NOTED

☉ = CENTERLINE OF RIGHT OF WAY

R/W = RIGHT OF WAY LINE

O.R. = OFFICIAL RECORDS OF MARION COUNTY

C.B. = CHORD BEARING

—|— = BROKEN LINE; NOT DRAWN TO SCALE



R.M. BARRINEAU
AND ASSOCIATES
 PROFESSIONAL SURVEYORS & MAPPERS
 Oakhurst Professional Park • 1309 S.E. 25th Loop+Suite 103+Ocala, FLORIDA 34471
 PHONE (352) 622-3133 • FAX (352) 389-3771 • www.rmBarrineau.com

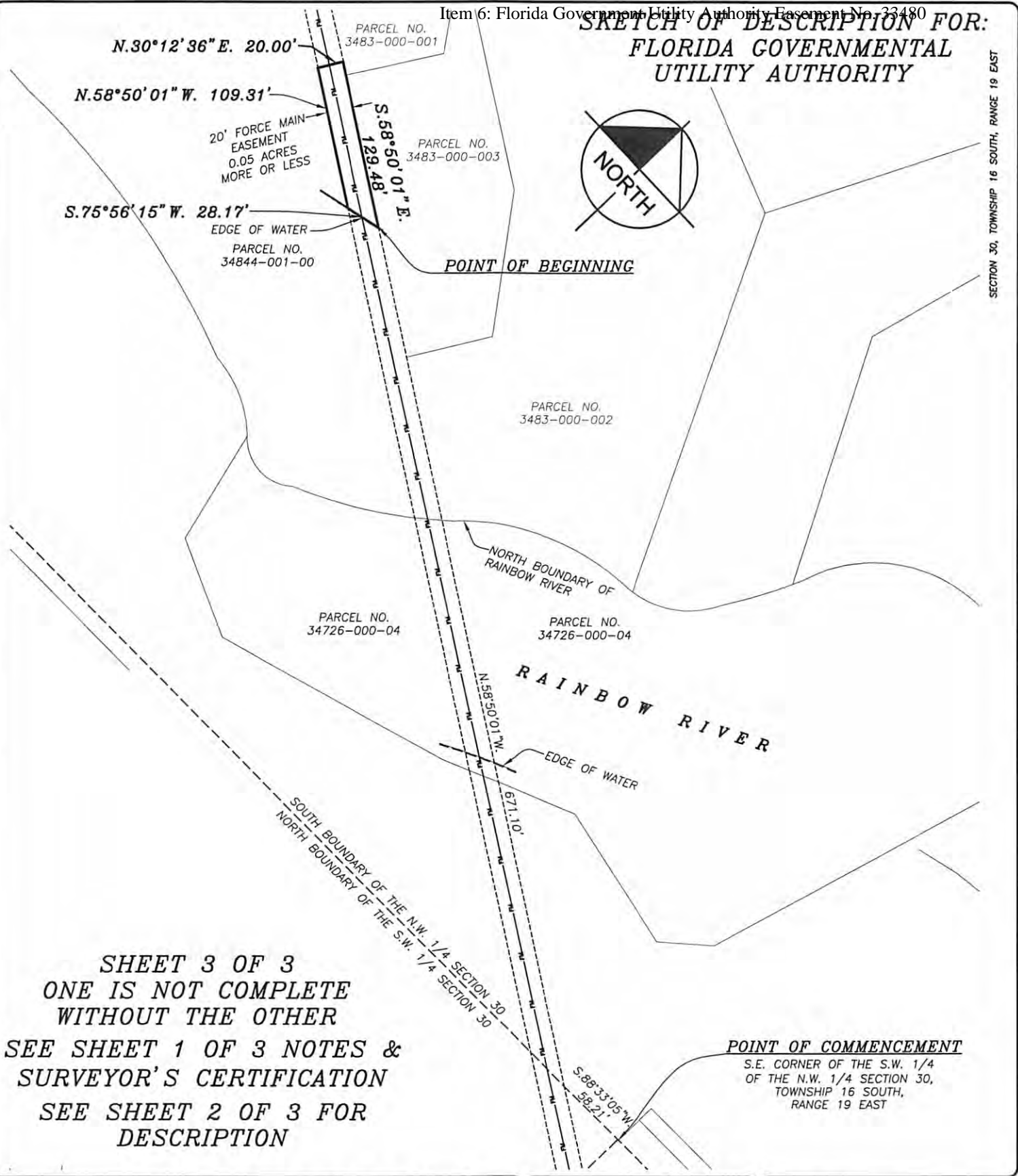
REGINALD M. BARRINEAU, P.S.M. - FOUNDER • CERTIFICATE OF AUTHORIZATION NO. LB 6091
 TRAVIS P. BARRINEAU, P.S.M. - LG 6097

August 2022 ARC Meeting

DRAWN:	T.P.B.	J.O.# 20196
REVISED:		DWG.# 20196 SK_R EASE
CHECKED:	T.P.B.	NORTH
APPROVED:	T.P.B.	
SCALE: 1" = 100'		COPYRIGHT © JULY, 2022

**SKETCH OF DESCRIPTION FOR:
FLORIDA GOVERNMENTAL
UTILITY AUTHORITY**

SECTION 30, TOWNSHIP 16 SOUTH, RANGE 19 EAST



**SHEET 3 OF 3
ONE IS NOT COMPLETE
WITHOUT THE OTHER
SEE SHEET 1 OF 3 NOTES &
SURVEYOR'S CERTIFICATION
SEE SHEET 2 OF 3 FOR
DESCRIPTION**



R.M. BARRINEAU
AND ASSOCIATES
PROFESSIONAL SURVEYORS & MAPPERS
Oakhurst Professional Park + 1309 S.E. 25th Loop+Suite 103+Ocala, FLORIDA 34471
PHONE (352) 622-3133 + FAX (352) 369-3771 + www.rmBarrineau.com

REGINALD M. BARRINEAU, P.S.M. - FOUNDER + CERTIFICATE OF AUTHORIZATION NO. LB 5091
TRAVIS P. BARRINEAU, P.S.M. - LS 8897
MINORITY BUSINESS ENTERPRISE



DRAWN:	T.P.B.	J.O.# 20196
REVISED:		DWG.# 20196 SK_R EASE
CHECKED:	T.P.B.	NORTH
APPROVED:	T.P.B.	
SCALE: 1" = 100'		COPYRIGHT July 2022

In re Florida Government Utility Authority Easement No. 33480
**SKETCH OF DESCRIPTION FOR:
 FLORIDA GOVERNMENTAL UTILITY AUTHORITY**

**SHEET 1 OF 7
 ONE IS NOT COMPLETE WITHOUT THE OTHER**

**SEE SHEET 2-3 OF 7 FOR DESCRIPTION
 SEE SHEET 4-7 OF 7 FOR SKETCH OF DESCRIPTION**

NOTES:

1. DATE OF SKETCH: JULY 14, 2022
2. SUBJECT TO RIGHTS OF WAY, RESTRICTIONS, EASEMENTS AND RESERVATIONS OF RECORD.
3. PUBLIC RECORDS NOT SEARCHED BY R.M. BARRINEAU & ASSOCIATES, INC.
4. BEARINGS AND STATE PLANE COORDINATES ARE BASED ON FLORIDA WEST GRID NAD-83 (CORS96)(EPOCH:2002.0000), BASED ON TRIMBLE VIRTUAL REFERENCE STATION NETWORK.
5. ADDITIONS OR DELETIONS TO SURVEY MAPS BY OTHER THAN THE SIGNING PARTY OR PARTIES IS PROHIBITED WITHOUT WRITTEN CONSENT OF THE SIGNING PARTY OR PARTIES.
6. THIS SKETCH HAS BEEN PREPARED FOR THE EXCLUSIVE BENEFIT OF THE PARTY(IES) NAMED HEREON, AND SHALL NOT BE DUPLICATED OR RELIED UPON BY ANY OTHER INDIVIDUAL OR ENTITY WITHOUT AUTHORIZATION FROM R.M. BARRINEAU & ASSOCIATES, INC.

***NOTE* ~ THIS IS NOT A SURVEY!**

SURVEYOR'S CERTIFICATION:

I HEREBY CERTIFY THAT THE SKETCH REPRESENTED HEREON MEETS THE STANDARDS OF PRACTICE AS SET FORTH BY THE FLORIDA BOARD OF PROFESSIONAL SURVEYORS AND MAPPERS IN CHAPTER 5J-17.050-052, FLORIDA ADMINISTRATIVE CODE, PURSUANT TO SECTION 472.027, FLORIDA STATUTES.

7/14/2022

SIGNATURE DATE



TRAVIS P. BARRINEAU, P.S.M. - LS 6897
 OF R.M. BARRINEAU & ASSOCIATES, INC.

TRAVIS@RMBARRINEAU.COM

NOT VALID WITHOUT THE SIGNATURE AND THE ORIGINAL RAISED SEAL OF A FLORIDA LICENSED SURVEYOR AND MAPPER



R.M. BARRINEAU
AND ASSOCIATES
 PROFESSIONAL SURVEYORS & MAPPERS
 Oakhurst Professional Park + 1309 S.E. 25th Loop+Suite 103+Ocala, FLORIDA 34471
 PHONE (352) 622-3133 + FAX (352) 369-3771 + www.rmBarrineau.com
 REGINALD M. BARRINEAU, P.S.M. - FOUNDER + CERTIFICATE OF AUTHORIZATION NO. LB 5091
 TRAVIS P. BARRINEAU, P.S.M. - LS 6897

August 2022 ARC Meeting

DRAWN:	T.P.B	J.O.# 21096
REVISED:		DWG.# 21096 SK_R EASE
CHECKED:	T.P.B.	SOUTH EASEMENT
APPROVED:	T.P.B.	REF:
SCALE: 1" = 100'		COPYRIGHT © JULY, 2022

**SKETCH OF DESCRIPTION FOR:
FLORIDA GOVERNMENTAL UTILITY AUTHORITY**

DESCRIPTION:

A PORTION OF THE N.E. 1/4 OF THE N.W. 1/4 OF SECTION 31, TOWNSHIP 16 SOUTH, RANGE 19 EAST AND A PORTION OF THE S.W. 1/4 AND THE N.W. 1/4 OF SECTION 30, TOWNSHIP 16 SOUTH, RANGE 19 EAST MARION COUNTY, FLORIDA BEING MORE PARTICULARLY DESCRIBED AS FOLLOWS:

COMMENCE AT THE S.E. CORNER OF THE S.W. 1/4 OF SAID SECTION 30; THENCE ALONG THE SOUTH BOUNDARY OF THE S.W. 1/4 OF SAID SECTION 30, S.88°48'14"W., A DISTANCE OF 97.95 FEET TO THE POINT OF BEGINNING; THENCE DEPARTING SAID SOUTH BOUNDARY, S.01°48'10"W., A DISTANCE OF 11.93 FEET TO A POINT ON THE NORTH RIGHT OF WAY LINE OF S.W HIGHWAY NO. 484 (RIGHT OF WAY WIDTH VARIES); THENCE ALONG SAID NORTH RIGHT OF WAY LINE, N.89°58'50"W., A DISTANCE OF 20.01 FEET; THENCE DEPARTING SAID NORTH RIGHT OF WAY LINE, N.01°48'10"E., A DISTANCE OF 61.05 FEET TO THE POINT OF CURVATURE OF A CURVE, CONCAVE WESTERLY, HAVING A RADIUS OF 2163.68 FEET, A CENTRAL ANGLE OF 01°45'51" AND A CHORD BEARING AND DISTANCE OF N.12°51'48"E., 66.62 FEET; THENCE NORTHEASTERLY ALONG THE ARC OF SAID CURVE, A DISTANCE OF 66.62 FEET TO THE END OF SAID CURVE; THENCE N.33°06'44"W., A DISTANCE OF 42.66 FEET TO THE POINT OF CURVATURE OF A CURVE, CONCAVE WESTERLY, HAVING A RADIUS OF 2133.67 FEET, A CENTRAL ANGLE OF 39°22'15" AND A CHORD BEARING AND A DISTANCE OF N.08°30'46"W., 1437.48 FEET; THENCE NORTHWESTERLY ALONG THE ARC OF SAID CURVE, A DISTANCE OF 1466.16 FEET TO THE END OF SAID CURVE; THENCE N.16°47'05"E., A DISTANCE OF 14.11 FEET TO THE POINT OF CURVATURE OF A CURVE, CONCAVE SOUTHWESTERLY, HAVING A RADIUS OF 2143.68 FEET, A CENTRAL ANGLE OF 02°32'49" AND A CHORD BEARING AND DISTANCE OF N.29°44'18"W., 95.29 FEET; THENCE NORTHWESTERLY ALONG THE ARC OF SAID CURVE, A DISTANCE OF 95.29 FEET TO THE END OF SAID CURVE; THENCE N.17°17'16"E., A DISTANCE OF 13.37 FEET TO THE POINT OF CURVATURE OF A CURVE CONCAVE SOUTHWESTERLY, HAVING A RADIUS OF 2155.22 FEET, A CENTRAL ANGLE OF 09°19'53" AND A CHORD BEARING AND DISTANCE OF N.35°54'56"W., 350.61 FEET; THENCE NORTHWESTERLY ALONG THE ARC OF SAID CURVE, A DISTANCE OF 351.00 FEET TO THE END OF SAID CURVE; THENCE N.86°22'36"W., A DISTANCE OF 14.00 FEET TO THE POINT OF CURVATURE OF A CURVE, CONCAVE SOUTHWESTERLY, HAVING A RADIUS OF 2143.71 FEET, A CENTRAL ANGLE OF 13°56'26" AND A CHORD BEARING AND DISTANCE OF N.47°49'03"W., 520.30 FEET; THENCE NORTHWESTERLY ALONG THE ARC OF SAID CURVE, A DISTANCE OF 521.59 FEET TO THE END OF SAID CURVE;

SHEET 2 OF 7

ONE IS NOT COMPLETE WITHOUT THE OTHER

SEE SHEET 1 OF 7 FOR NOTES & CERTIFICATION

SEE SHEET 4-7 OF 7 FOR SKETCH OF DESCRIPTION



R.M. BARRINEAU
AND ASSOCIATES
 PROFESSIONAL SURVEYORS & MAPPERS
 Oakhurst Professional Park + 1309 S.E. 25th Loop+Suite 103+Ocala, FLORIDA 34471
 PHONE (352) 622-3133 + FAX (352) 369-3771 + www.rmBarrineau.com
 REGINALD M. BARRINEAU, P.S.M.- FOUNDER + CERTIFICATE OF AUTHORIZATION NO. LB 5081
 TRAVIS P. BARRINEAU, P.S.M. - LS 6897



August 2022 ARC Meeting

DRAWN:	T.P.B.	J.O.# 20196
REVISED:		DWG.# 20196 SK_R EASE
CHECKED:	T.P.B.	SOUTH EASEMENT
APPROVED:	T.P.B.	
SCALE: 1" = 100'		Page 9 of 24 COPYRIGHT © JULY, 2022

In the Public Interest, Florida Governmental Utility Authority Easement No. 33480

SKETCH OF DESCRIPTION FOR: FLORIDA GOVERNMENTAL UTILITY AUTHORITY

DESCRIPTION: (CONTINUED)

THENCE N.52°20'47"W. A DISTANCE OF 313.01 FEET; THENCE N.58°50'01"W., A DISTANCE OF 445.38 FEET TO THE SOUTHERLY EDGE OF WATER (AS OF DECEMBER 18, 2020) OF THE RAINBOW RIVER; THENCE ALONG SAID SOUTHERLY EDGE OF WATER, N.63°59'28"E., A DISTANCE OF 23.80 FEET; THENCE DEPARTING SAID SOUTHERLY EDGE OF WATER, S.58°50'01"E., A DISTANCE OF 433.62 FEET; THENCE S.52°20'47"E., A DISTANCE OF 313.72 FEET TO THE POINT OF CURVATURE OF A CURVE, CONCAVE SOUTHWESTERLY, HAVING A RADIUS OF 2163.71 FEET, A CENTRAL ANGLE OF 13°42'24" AND A CHORD BEARING AND DISTANCE OF S.47°55'23"E., 516.38 FEET; THENCE SOUTHEASTERLY ALONG THE ARC OF SAID CURVE, A DISTANCE OF 517.62 FEET TO THE END OF SAID CURVE; THENCE S.86°22'36"E., A DISTANCE OF 14.05 FEET TO THE POINT OF CURVATURE OF A CURVE, CONCAVE SOUTHWESTERLY, HAVING A RADIUS OF 2175.22 FEET, A CENTRAL ANGLE OF 09°47'32" AND A CHORD BEARING AND DISTANCE OF S.35°54'29"E., 371.30 FEET; THENCE SOUTHEASTERLY ALONG THE ARC OF SAID CURVE, A DISTANCE OF 371.76 FEET TO THE END OF SAID CURVE; THENCE S.17°17'16"W., A DISTANCE 13.42 FEET TO THE POINT OF CURVATURE OF A CURVE, CONCAVE SOUTHWESTERLY, HAVING A RADIUS OF 2163.68 FEET, A CENTRAL ANGLE OF 02°31'49" AND CHORD BEARING AND DISTANCE OF S.29°30'32"E., 95.54 FEET; THENCE SOUTHEASTERLY ALONG THE ARC OF SAID CURVE, A DISTANCE OF 95.55 FEET TO THE END OF SAID CURVE; THENCE S.16°47'05"W., A DISTANCE OF 14.17 FEET TO THE POINT OF CURVATURE OF A CURVE, CONCAVE WESTERLY, HAVING A RADIUS OF 2153.67 FEET, A CENTRAL ANGLE OF 38°56'00" AND A CHORD BEARING AND DISTANCE OF S.08°30'39"E., 1435.46 FEET; THENCE SOUTHEASTERLY ALONG THE ARC OF SAID CURVE, A DISTANCE OF 1463.45 FEET TO THE END OF SAID CURVE; THENCE S.33°06'44"E., A DISTANCE OF 42.82 FEET TO A POINT ON THE EAST BOUNDARY OF LANDS DESCRIBED IN OFFICIAL RECORDS BOOK 3774, PAGE 49 OF THE PUBLIC RECORDS OF MARION COUNTY, FLORIDA SAID POINT ALSO BEING ON A CURVE, CONCAVE WESTERLY, HAVING A RADIUS OF 2183.68 FEET; A CENTRAL ANGLE OF 01°55'39" AND A CHORD BEARING AND DISTANCE OF S.12°43'36"W., 73.46 FEET; THENCE SOUTHEASTERLY ALONG SAID EAST BOUNDARY AND THE ARC OF SAID CURVE, A DISTANCE OF 73.46 FEET TO THE END OF SAID CURVE. THENCE DEPARTING SAID EAST BOUNDARY, S.01°48'10"W., A DISTANCE OF 46.41 FEET TO THE POINT OF BEGINNING.

BSM APPROVED

By: J.A. Date: 04/14/2022

SHEET 3 OF 7
ONE IS NOT COMPLETE WITHOUT THE OTHER
SEE SHEET 1 OF 7 FOR NOTES & CERTIFICATION
SEE SHEET 4-7 OF 7 FOR SKETCH OF DESCRIPTION



R.M. BARRINEAU
AND ASSOCIATES
 PROFESSIONAL SURVEYORS & MAPPERS
 Oakhurst Professional Park + 1309 S.E. 25th Loop+Suite 103+Ocala, FLORIDA 34471
 PHONE (352) 622-3133 + FAX (352) 389-3771 + www.rmBarrineau.com
 REGINALD M. BARRINEAU, P.S.M. - FOUNDER + CERTIFICATE OF AUTHORIZATION NO. LB 6091
 TRAVIS P. BARRINEAU, P.S.M. - LB 6697

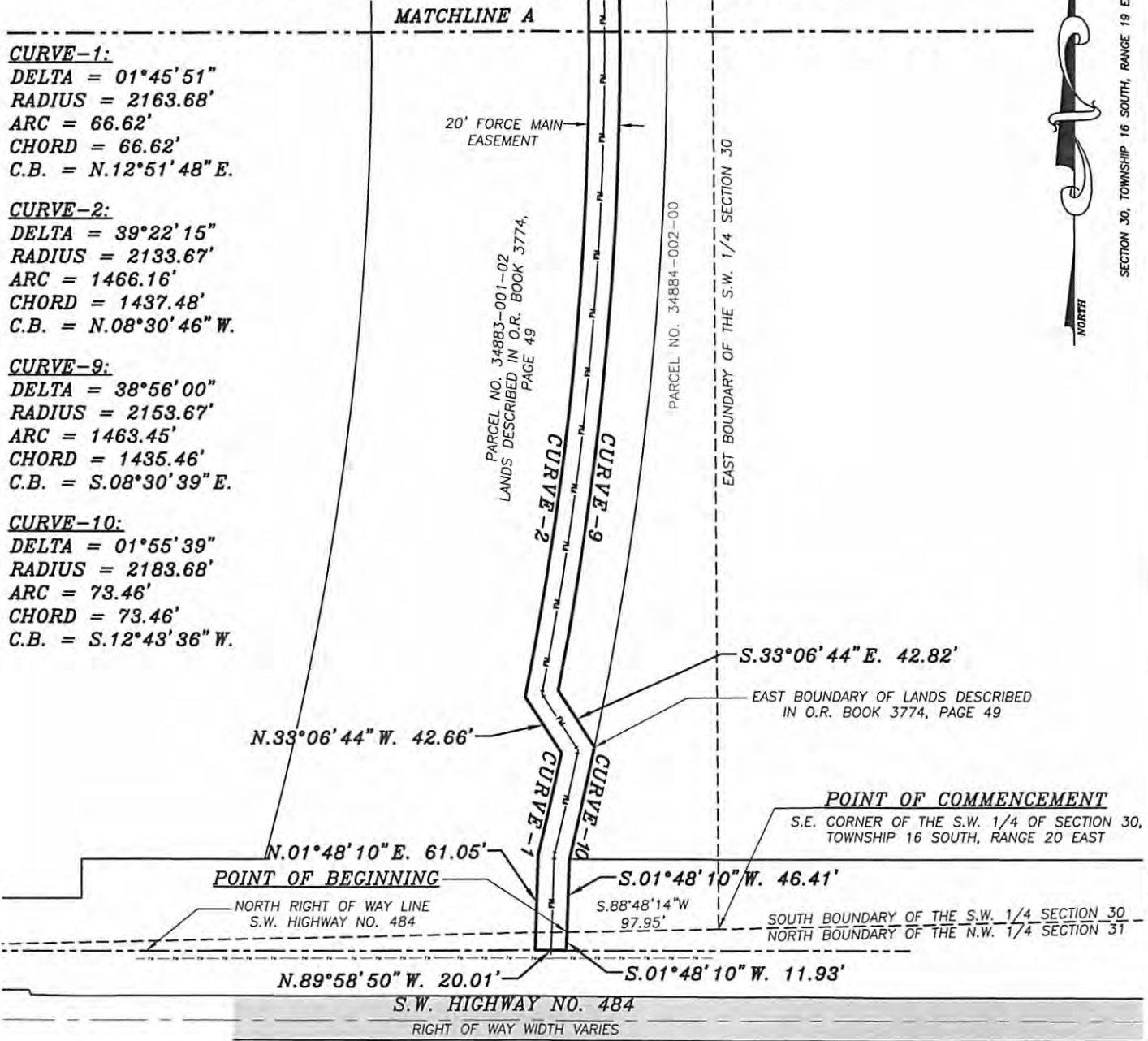
August 2022 ARC Meeting

DRAWN:	T.P.B.	J.O.# 20196
REVISED:		DWG.# 20196 SK_R EASE
CHECKED:	T.P.B.	SOUTH EASEMENT
APPROVED:	T.P.B.	
SCALE: 1" = 100'		COPYRIGHT © JULY, 2022

FLORIDA GOVERNMENTAL UTILITY AUTHORITY EASEMENT No. 33480
**SKETCH OF DESCRIPTION FOR:
 FLORIDA GOVERNMENTAL UTILITY AUTHORITY**

SECTION 30, TOWNSHIP 16 SOUTH, RANGE 19 EAST

NORTH



CURVE-1:
 DELTA = 01°45'51"
 RADIUS = 2163.68'
 ARC = 66.62'
 CHORD = 66.62'
 C.B. = N.12°51'48" E.

CURVE-2:
 DELTA = 39°22'15"
 RADIUS = 2133.67'
 ARC = 1466.16'
 CHORD = 1437.48'
 C.B. = N.08°30'46" W.

CURVE-9:
 DELTA = 38°56'00"
 RADIUS = 2153.67'
 ARC = 1463.45'
 CHORD = 1435.46'
 C.B. = S.08°30'39" E.

CURVE-10:
 DELTA = 01°55'39"
 RADIUS = 2183.68'
 ARC = 73.46'
 CHORD = 73.46'
 C.B. = S.12°43'36" W.

***NOTE* ~ THIS IS NOT A SURVEY!**

- LEGEND** UNLESS OTHERWISE NOTED
- ⊕ = CENTERLINE OF RIGHT OF WAY
 - R/W = RIGHT OF WAY LINE
 - O.R. = OFFICIAL RECORDS OF MARION COUNTY
 - C.B. = CHORD BEARING
 - = BROKEN LINE; NOT DRAWN TO SCALE

**SHEET 4 OF 7
 ONE IS NOT COMPLETE
 WITHOUT THE OTHER
 SEE SHEET 1 OF 7 NOTES &
 SURVEYOR'S CERTIFICATION
 SEE SHEET 2-3 OF 7 FOR
 DESCRIPTION**

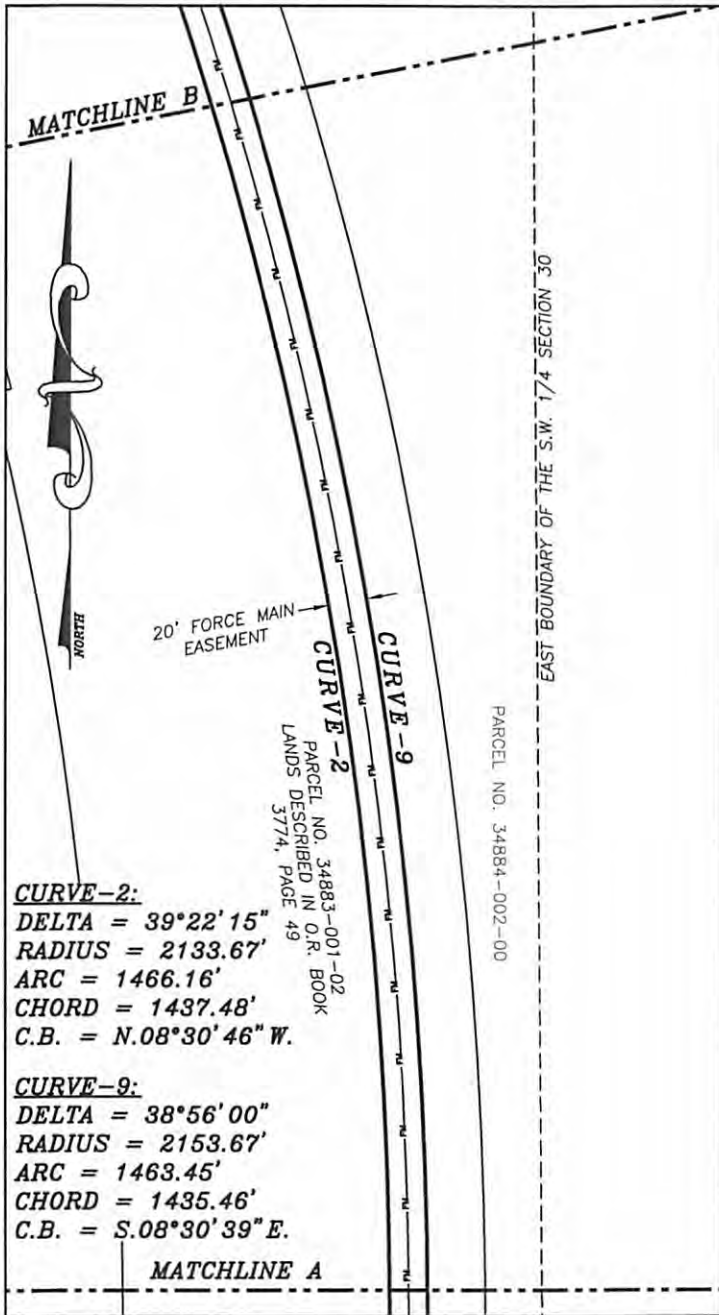
R.M. BARRINEAU
AND ASSOCIATES
 PROFESSIONAL SURVEYORS & MAPPERS
 Oakhurst Professional Park + 1309 S.E. 25th Loop+Suite 103+Ocala, FLORIDA 34471
 PHONE (352) 622-3133 + FAX (352) 369-3771 + www.rmBarrineau.com

REGINALD M. BARRINEAU, P.S.M.- FOUNDER + CERTIFICATE OF AUTHORIZATION NO. LB 5091
 TRAVIS P. BARRINEAU, P.S.M. - LS 8897
 MINORITY BUSINESS ENTERPRISE

August 2022 ARC Meeting

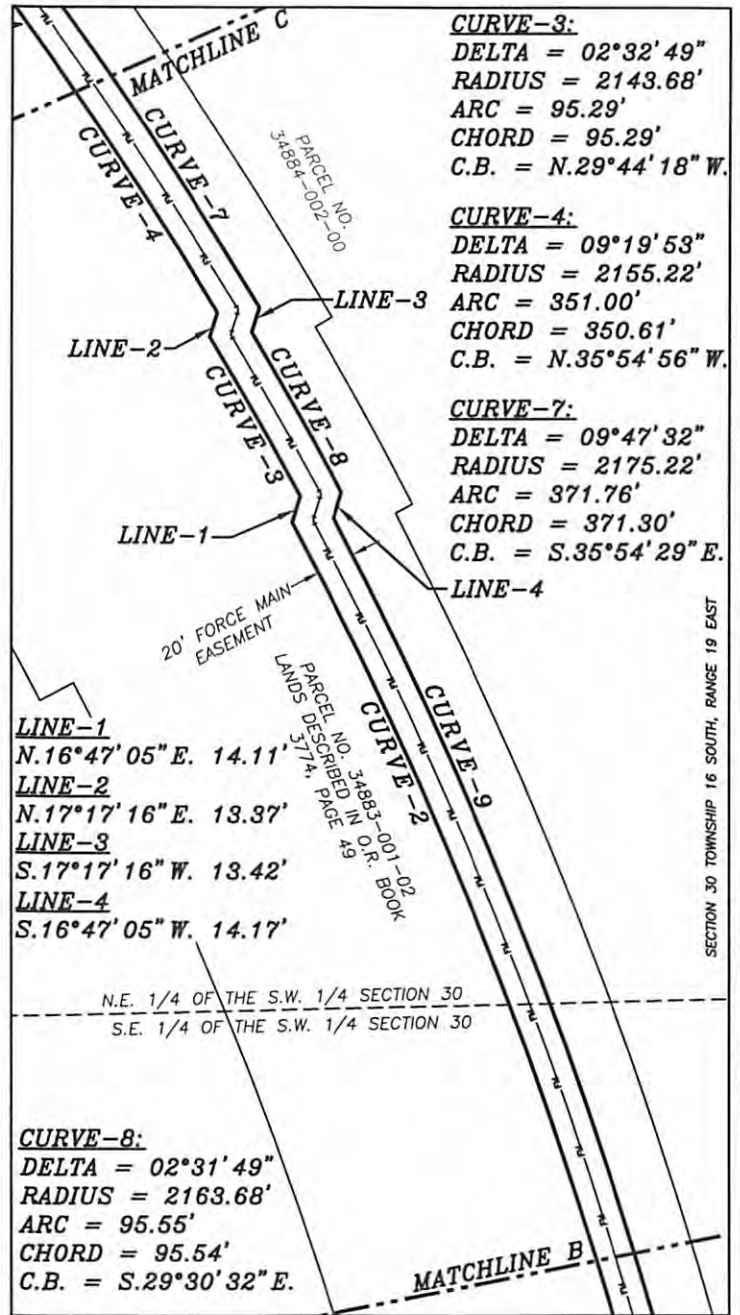
DRAWN:	T.P.B.	J.O.# 20196
REVISED:		DWG.# 20196 SK_R EASE
CHECKED:	T.P.B.	SOUTH EASEMENT
APPROVED:	T.P.B.	
SCALE: 1" = 100'		COPYRIGHT © 2022

SKETCH OF DESCRIPTION FOR:
FLORIDA GOVERNMENTAL UTILITY AUTHORITY



CURVE-2:
 DELTA = 39°22'15"
 RADIUS = 2133.67'
 ARC = 1466.16'
 CHORD = 1437.48'
 C.B. = N.08°30'46" W.

CURVE-9:
 DELTA = 38°56'00"
 RADIUS = 2153.67'
 ARC = 1463.45'
 CHORD = 1435.46'
 C.B. = S.08°30'39" E.



LINE-1
 N.16°47'05" E. 14.11'
LINE-2
 N.17°17'16" E. 13.37'
LINE-3
 S.17°17'16" W. 13.42'
LINE-4
 S.16°47'05" W. 14.17'

CURVE-8:
 DELTA = 02°31'49"
 RADIUS = 2163.68'
 ARC = 95.55'
 CHORD = 95.54'
 C.B. = S.29°30'32" E.

CURVE-3:
 DELTA = 02°32'49"
 RADIUS = 2143.68'
 ARC = 95.29'
 CHORD = 95.29'
 C.B. = N.29°44'18" W.

CURVE-4:
 DELTA = 09°19'53"
 RADIUS = 2155.22'
 ARC = 351.00'
 CHORD = 350.61'
 C.B. = N.35°54'56" W.

CURVE-7:
 DELTA = 09°47'32"
 RADIUS = 2175.22'
 ARC = 371.76'
 CHORD = 371.30'
 C.B. = S.35°54'29" E.

***NOTE* ~ THIS IS NOT A SURVEY!**

LEGEND UNLESS OTHERWISE NOTED

⊕ = CENTERLINE OF RIGHT OF WAY

R/W = RIGHT OF WAY LINE

O.R. = OFFICIAL RECORDS OF MARION COUNTY

C.B. = CHORD BEARING

— = BROKEN LINE; NOT DRAWN TO SCALE

SHEET 5 OF 7
ONE IS NOT COMPLETE
WITHOUT THE OTHER

SEE SHEET 1 OF 7 NOTES &
SURVEYOR'S CERTIFICATION
SEE SHEET 2-3 OF 7 FOR
DESCRIPTION

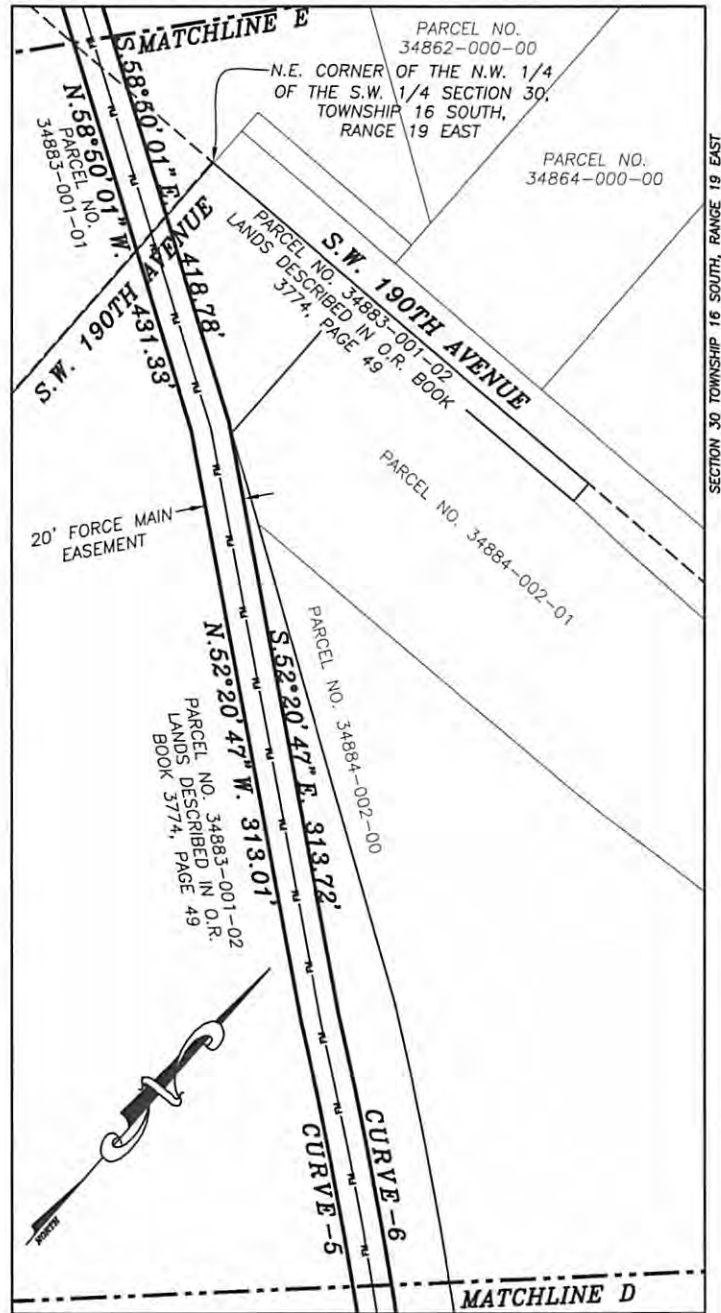
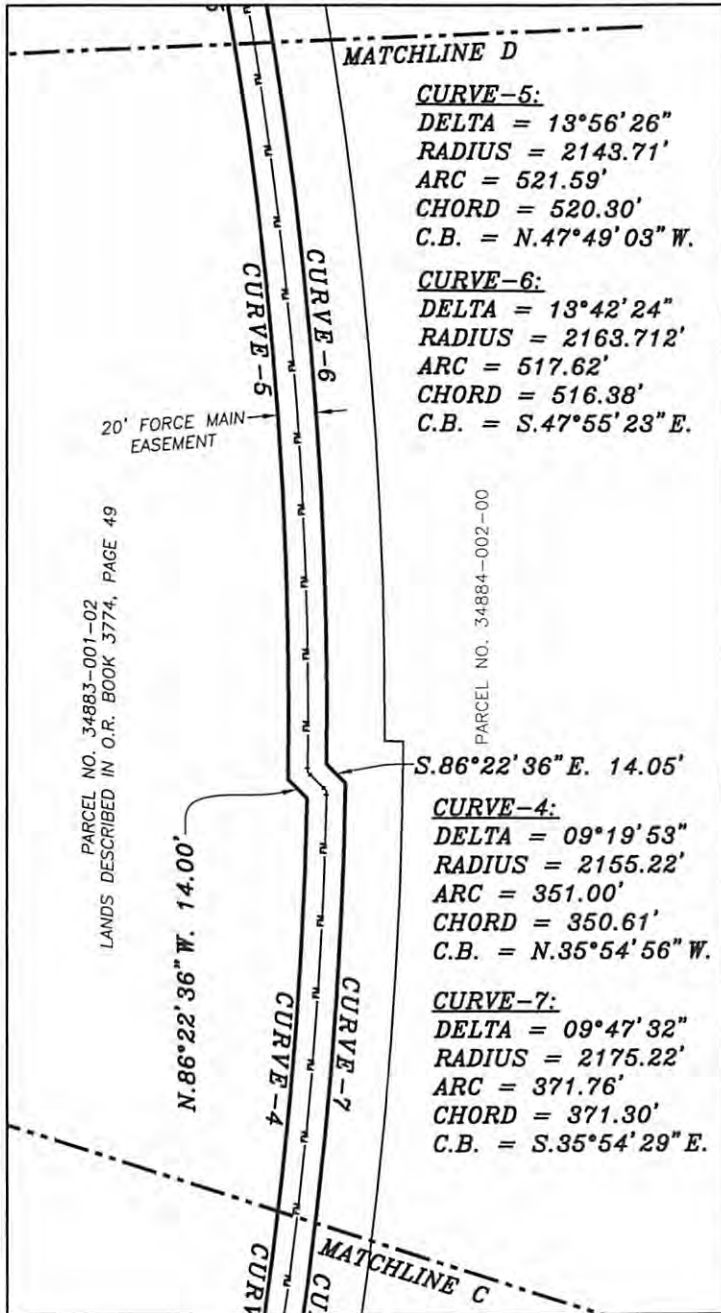


R.M. BARRINEAU
AND ASSOCIATES
 PROFESSIONAL SURVEYORS & MAPPERS
 Oakhurst Professional Park + 1309 S.E. 25th Loop+Suite 103+Ocala, FLORIDA 34471
 PHONE (352) 622-3133 + FAX (352) 369-3771 + www.rmBarrineau.com
 REGINALD M. BARRINEAU, P.S.M.- FOUNDER + CERTIFICATE OF AUTHORIZATION NO. LB 5091
 TRAVIS P. BARRINEAU, P.S.M. - LS 8687



DRAWN:	T.P.B.	J.O.# 20196
REVISED:		DWG.# 20196 SK_R EASE
CHECKED:	T.P.B.	SOUTH EASEMENT
APPROVED:	T.P.B.	

FLORIDA GOVERNMENTAL UTILITY AUTHORITY EASEMENT No. 33480
SKETCH OF DESCRIPTION FOR:
FLORIDA GOVERNMENTAL UTILITY AUTHORITY



***NOTE* ~ THIS IS NOT A SURVEY!**

LEGEND UNLESS OTHERWISE NOTED

⊕ = CENTERLINE OF RIGHT OF WAY

R/W = RIGHT OF WAY LINE

O.R. = OFFICIAL RECORDS OF MARION COUNTY

C.B. = CHORD BEARING

— = BROKEN LINE; NOT DRAWN TO SCALE

**SHEET 6 OF 7
 ONE IS NOT COMPLETE
 WITHOUT THE OTHER**

**SEE SHEET 1 OF 7 NOTES &
 SURVEYOR'S CERTIFICATION
 SEE SHEET 2-3 OF 7 FOR
 DESCRIPTION**



R.M. BARRINEAU
AND ASSOCIATES
 PROFESSIONAL SURVEYORS & MAPPERS
 Oakhurst Professional Park + 1309 S.E. 25th Loop+Suite 103+Ocala, FLORIDA 34471
 PHONE (352) 622-3133 + FAX (352) 369-3771 + www.rmBarrineau.com
 REGINALD M. BARRINEAU, P.S.M. - FOUNDER + CERTIFICATE OF AUTHORIZATION NO. LB 5091
 TRAVIS P. BARRINEAU, P.S.M. - LS 6897

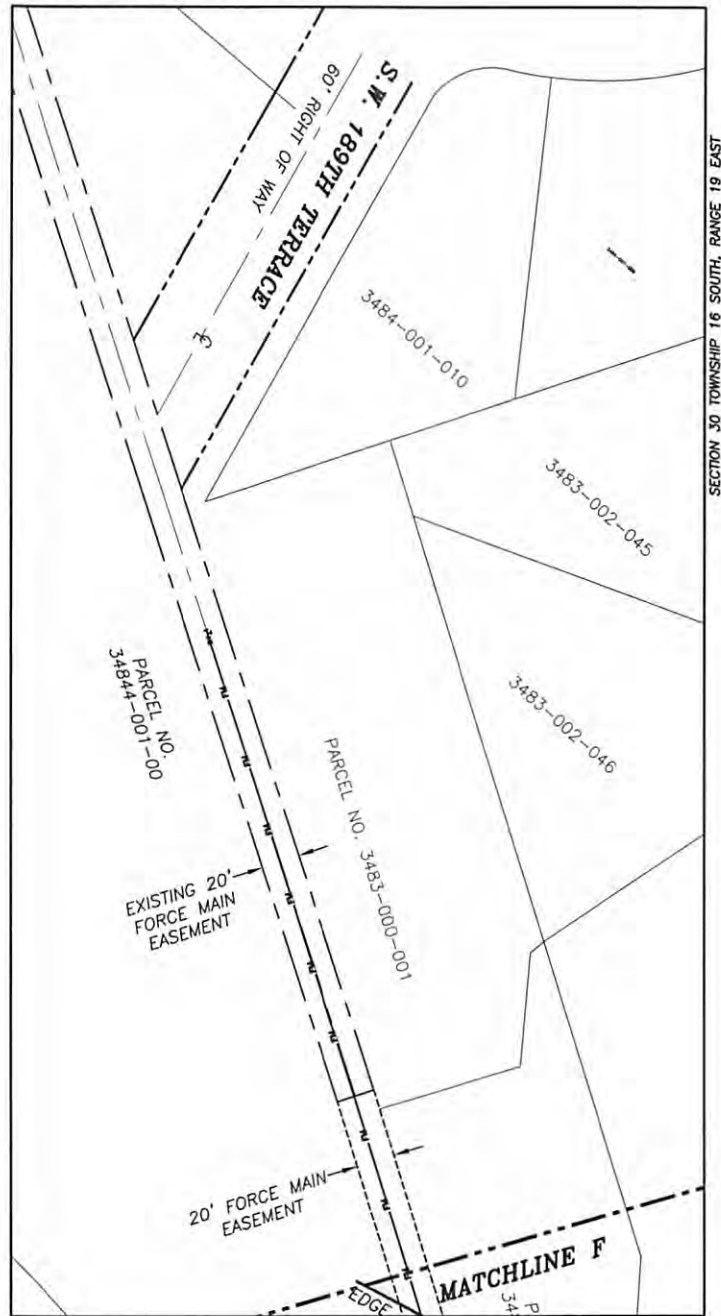
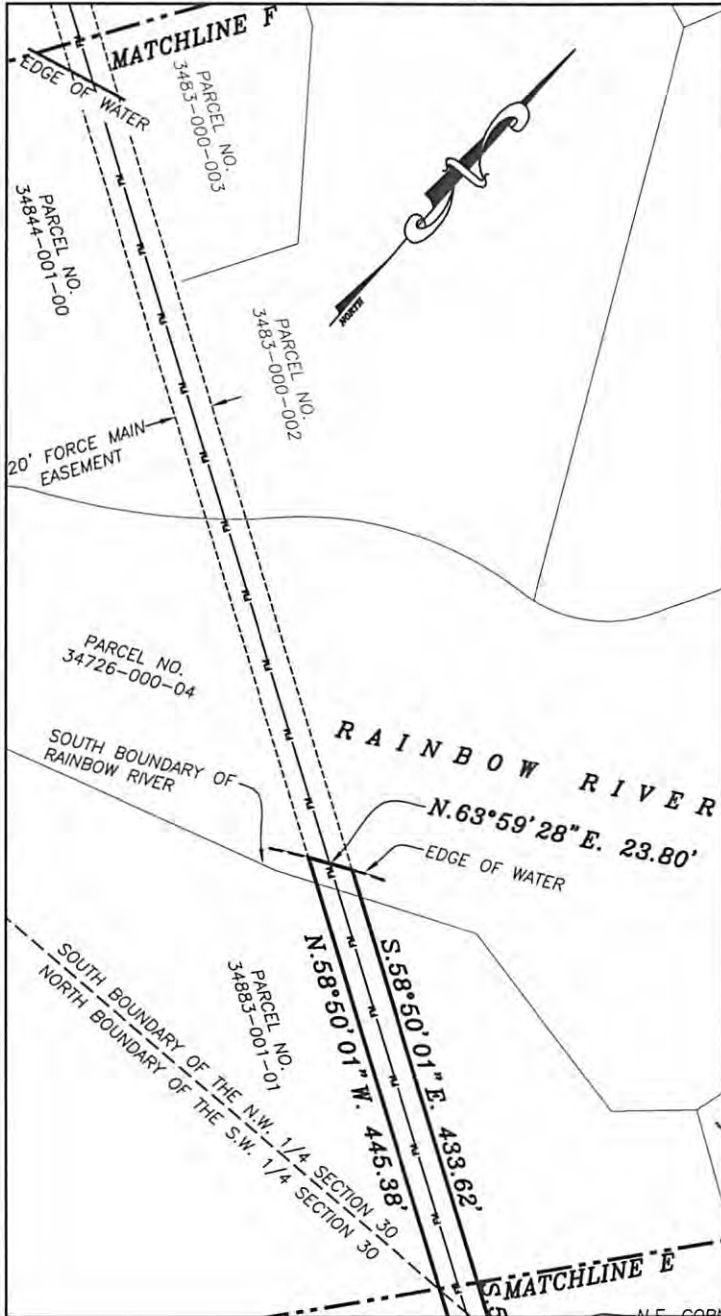


DRAWN:	T.P.B.	J.O.# 20196
REVISED:		DWG.# 20196 SK_R EASE
CHECKED:	T.P.B.	SOUTH EASEMENT
APPROVED:	T.P.B.	

SCALE: 1" = 100'

COPYRIGHT © JULY, 2022

Top of Florida Government Utility Authority Easement No. 33480
**SKETCH OF DESCRIPTION FOR:
 FLORIDA GOVERNMENTAL UTILITY AUTHORITY**



SECTION 30 TOWNSHIP 16 SOUTH, RANGE 19 EAST

***NOTE* ~ THIS IS NOT A SURVEY!**

LEGEND UNLESS OTHERWISE NOTED

- ☐ = CENTERLINE OF RIGHT OF WAY
- R/W = RIGHT OF WAY LINE
- O.R. = OFFICIAL RECORDS OF MARION COUNTY
- C.B. = CHORD BEARING
- = BROKEN LINE; NOT DRAWN TO SCALE

**SHEET 7 OF 7
 ONE IS NOT COMPLETE
 WITHOUT THE OTHER**

**SEE SHEET 1 OF 7 NOTES &
 SURVEYOR'S CERTIFICATION
 SEE SHEET 2-3 OF 7 FOR
 DESCRIPTION**



R.M. BARRINEAU
AND ASSOCIATES
 PROFESSIONAL SURVEYORS & MAPPERS
 Oakhurst Professional Park + 1309 S.E. 25th Loop+Suite 103+Ocala, FLORIDA 34471
 PHONE (352) 622-3133 + FAX (352) 369-3771 + www.rmBarrineau.com
REGINALD M. BARRINEAU, P.S.M.- FOUNDER + CERTIFICATE OF AUTHORIZATION NO. LB 5091
 TRAVIS P. BARRINEAU, P.S.M. - LS 6897
 MINORITY BUSINESS ENTERPRISE

August 2022 ARC Meeting

DRAWN:	T.P.B.	J.O.# 20196
REVISED:		DWG.# 20196 SK_R EASE
CHECKED:	T.P.B.	SOUTH EASEMENT
APPROVED:	T.P.B.	
SCALE: 1" = 100'		Page 4 of 24 COPYRIGHT © 2022



FLORIDA DEPARTMENT OF Environmental Protection

Marjory Stoneman Douglas Building
3900 Commonwealth Boulevard
Tallahassee, FL 32399

Ron DeSantis
Governor

Jeanette Nuñez
Lt. Governor

Shawn Hamilton
Secretary

June 23, 2022

Florida Governmental Utility Authority
Attn: John Carlson
280 Wekiva Springs Road, Suite 2070
Longwood, FL 32779-6026
jcarlson@govmserv.com

Re: Easement for Underground Utilities (Lease 3900 and Lease 4013)

Dear Mr. Carlson,

The Division of Recreation and Parks (DRP), leaseholder of the Rainbow Springs State Park (Park) and the Marjorie Harris Carr Cross Florida Greenways State Recreation and Conservation Area (Park), has reviewed the Florida Governmental Utility Authority's (FGUA) request for a 20' utility easement, to construct, operate, and maintain a wastewater force main. DRP has determined that this project will be a benefit to the Park's aquifer, and therefore has no objection to the proposed easement as depicted in **Exhibit "A"**, attached, and subject to the special conditions as listed in **Exhibit "B"**, attached.

In an effort to offset impacts, and to fulfill the Net Positive Benefit (NPB) obligation, as depicted in **Exhibit "C"** attached, FGUA agrees to the following under a separate authorization with DRP and the Board of Trustees (BOT):

- a. FGUA will provide wastewater connections to FGUA's central sewer system for the benefit of the Rainbow Springs State Park campground.
- b. FGUA will provide Engineering, design, and construction of the Rainbow Springs State Park campground wastewater connections to FGUA's central sewer system.
- c. All construction warranties are to be transferred and assigned to DRP. The assignment shall be evidenced by a separate written agreement, subject to applicable Governmental Law and the construction agreement entered into between FGUA and its contractor.

Florida Governmental Utility Authority

Attn: John Carlson

RE: Easement for Underground Utilities (Lease 3900 and Lease 4013)

June 23, 2022

Page 2

- d. FGUA will notify the Park Manager four weeks in advance if construction activities at Rainbow Springs State Park campground will disrupt the use of the campground for more than a single 8-hour workday.

You may reach me at (850) 245-3084 or via email at Brian.Fugate@FloridaDep.gov if you have any questions.

Sincerely,

Brian Fugate
Digitally signed by Brian
Fugate
Date: 2022.06.23
14:52:46 -04'00'

Brian Fugate, Chief
Office of Park Planning
Division of Recreation and Parks

BF:dp

Attachments (3)

Cc: Clif Maxwell, Bureau of Parks, District 2, Chief
Robert Yero, Bureau of Parks, District 3, Chief
Larry Steed, Park Manager, Rainbow Springs State Park
Mickey Thomason, Park Manager, Cross Florida Greenway

EXHIBIT "A"

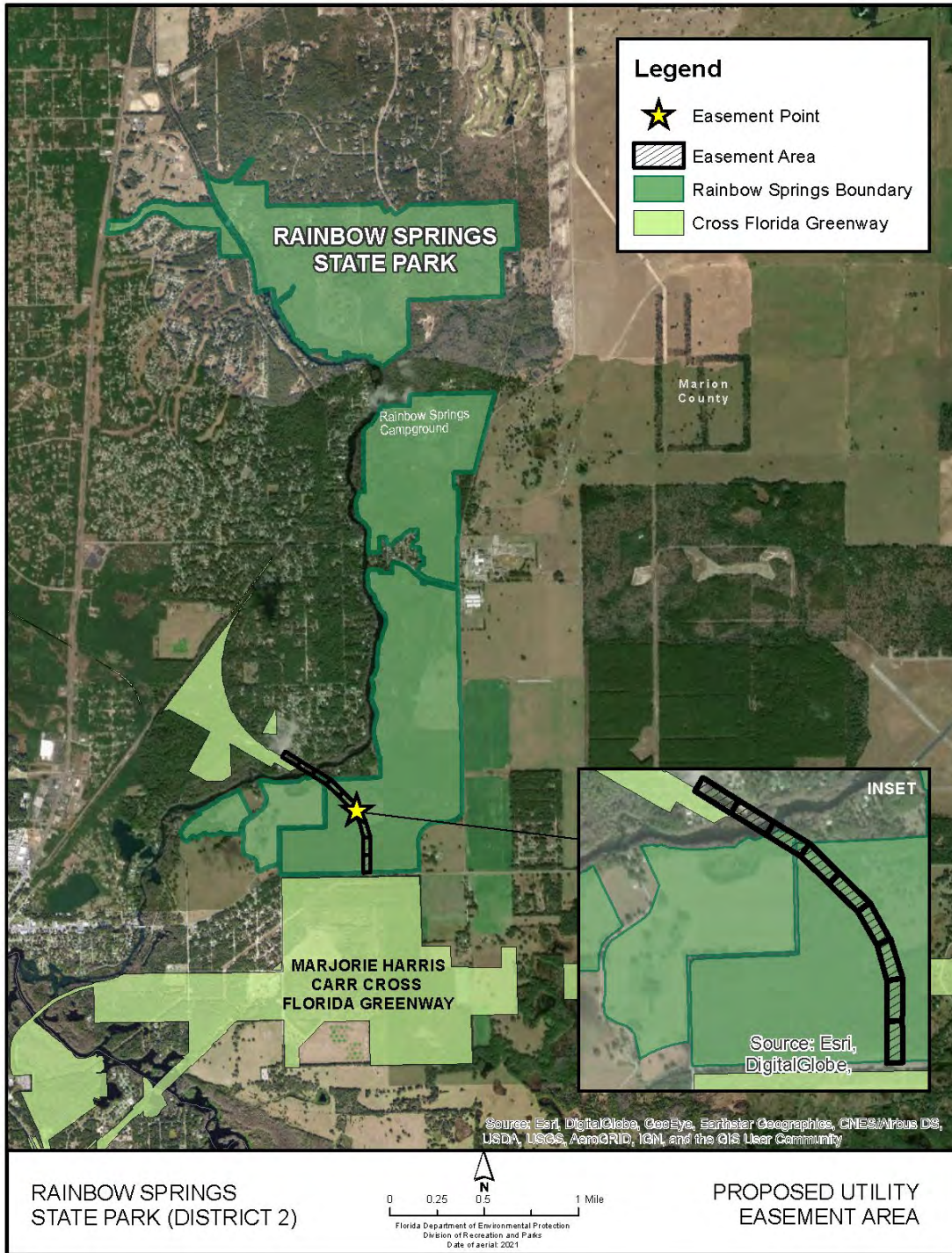


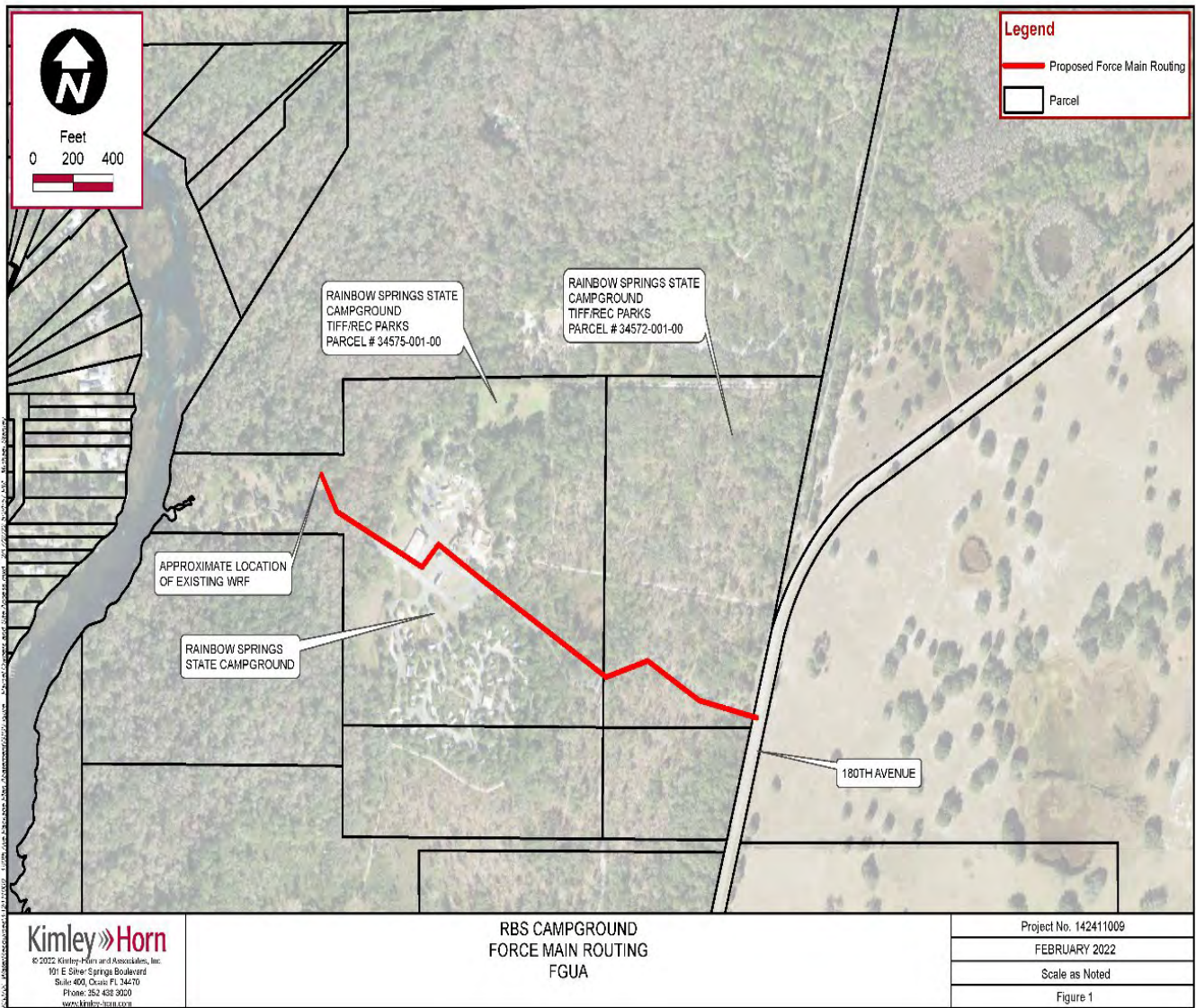
EXHIBIT "B"

Special Conditions for Marjorie Harris Carr Cross Florida Greenways State Recreation and Conservation Area and Rainbow Springs State Park

- A. GRANTEE shall notify and coordinate with the Managing Agency's (DRP) park managers (Manager or Managers) of the Rainbow Springs State Park and the Marjorie Harris Carr Cross Florida Greenways State Recreation and Conservation Area (Park or Parks) (2) two weeks in advance prior to entry for construction. The Manager of Rainbow Springs State Park can be reached by calling phone number (352) 427-7374 and the Manager for the Marjorie Harris Carr Cross Florida Greenways State Recreation and Conservation Area can be reached by calling phone number (352) 236-7143.
- B. Each Manager reserves the right to hold an onsite pre-construction meeting prior to GRANTEE entering the Park. Further, each Manager may require periodic onsite meetings thereafter during construction.
- C. GRANTEE shall access each Park at the access points designated by the Managers.
- D. GRANTEE shall post signs notifying Park visitors of construction activities.
- E. GRANTEE shall contact the State of Florida Department of State, Division of Historical Resources (DHR) to determine if a certified archaeological monitor is required to be on-site for all ground-disturbing activities. Further, the GRANTEE shall provide written confirmation to each Manager that the determination from DHR has been obtained. Should an on-site monitor be required, GRANTEE shall provide one at its sole cost and expense. DHR may be contacted directly at (850) 245-6333. Additionally, if any artifacts, human remains, or historic materials are discovered during the work process, all work must cease, and each Manager must be notified immediately.
- F. GRANTEE shall ensure that all stationary and mechanized equipment entering either Park is clean and does not contain any soil, plant, or animal remains in an effort to help prevent the spread of exotic or invasive species. Each Manager may be responsible for inspecting all equipment prior to entry and deny access for equipment that has not been sufficiently cleaned. For complete decontamination guidelines visit: <https://www.floridainvasives.org/resources.cfm>
- G. GRANTEE at its sole cost and expense, shall repair all damages to the Parks that is a direct result of its project activities. This may include, but not be limited to, natural vegetation (trees, grasses, groundcover vegetation).
- H. GRANTEE shall not negatively impact any state or federally listed plant or animal species. In order to protect the endangered gopher tortoise and other species, GRANTEE shall obtain the necessary permits from the Florida Fish and Wildlife Commission before the survey work can begin. Any individual gopher tortoise or any other wildlife (including all types of snakes) encountered during the survey work, must not be killed, removed, or otherwise intentionally harassed. Additionally, any gopher tortoise found injured, harmed, disoriented, or out of its burrow should be avoided and its location reported immediately to the Park Manager.
- I. GRANTEE shall not begin construction until final construction plans have been approved in writing by DRP.
- J. Should water connectivity become available in the future, GRANTEE shall seek approval of the Manager before construction of water connections in the easement area takes place.
- K. GRANTEE shall fulfill Net Positive Benefit within one year after this easement is issued.

EXHIBIT "C"

Net Positive Benefit Rainbow Springs State Park Campgrounds





FLORIDA DEPARTMENT of STATE

RON DESANTIS
Governor

CORD BYRD
Secretary of State

Florida Department of Environmental Protection
Bureau of Public Land Administration
3900 Commonwealth Blvd.
Tallahassee, FL 32399-3000

June 7, 2022

Re: DHR No.: 2022-3129
Project: 45226 Easement 33480 - Florida Gov. Utility Authority

To Whom It May Concern:

Our office reviewed the referenced project in accordance with Chapter 267, *Florida Statutes*, and implementing state regulations, for possible effects on historic properties listed, or eligible for listing, in the *National Register of Historic Places*, or otherwise of historical, architectural or archaeological value.

A review of the Florida Master Site File indicates that the project area has not been surveyed for archaeological properties. Since conditions in the area are favorable for the presence of these kinds of resources and due to the nature of the project, we recommend that the project area be subjected to a professional cultural resources assessment survey. The resultant survey report should conform to the provisions of Chapter 1A-46, *Florida Administrative Code*, and should be sent to our office upon completion. The report will help us complete the review process and provide comments or recommendations to the permitting agency in a timely fashion.

The Division of Historical Resources cannot endorse specific archaeological or historic preservation consultants. However, the American Cultural Resources Association maintains a listing of professional consultants at www.acra-crm.org, and the Register of Professional Archaeologists maintains a membership directory at www.rpanet.org. The Division encourages checking references and recent work history.

In addition, because the project will occur on state lands, it will require a 1A-32 permit. The consultant should contact Brandon Ackermann at the Bureau of Archaeological Research (Brandon.Ackermann@DOS.myflorida.com or 850-245-6334). For further information see link <https://dos.myflorida.com/historical/archaeology/public-lands/research-permits/>.

Division of Historical Resources
R.A. Gray Building • 500 South Bronough Street • Tallahassee, Florida 32399
850.245.6300 • 850.245.6436 (Fax) • FLHeritage.com



If you have any questions, please contact Jennifer Tobias, Historic Sites Specialist, by email at Jennifer.Tobias@dos.myflorida.com.

Sincerely,

Handwritten signature in blue ink that reads "Kelly L. Chase" with "For" written below it.

Timothy A. Parsons, Ph.D.
Director, Division of Historical Resources and
State Historic Preservation Officer



FLORIDA DEPARTMENT OF Environmental Protection

Marjory Stoneman Douglas Building
3900 Commonwealth Boulevard
Tallahassee, FL 32399

Ron DeSantis
Governor

Jeanette Nuñez
Lt. Governor

Shawn Hamilton
Secretary

Acquisition and Restoration Council (ARC) Questionnaire

Complete the following and return to Angel Granger, Land Administration Manager, Office of Park Planning, Division of Recreation and Parks at Angel.Granger@FloridaDep.gov
You may attach additional sheets if needed.

Date 05/17/2022

Name of Park/Trail Marjorie H. Carr Cross Florida Greenway

Lease Number 4013

Project Name FGUA Wastewater Forcemain and Watermain Easement

1. Description of when and under what program or fund the parcel under consideration was acquired (EEL, LATF, CARL, P-2000, Florida Forever, etc.) or donated.

Property was transferred back to the state after de-authorization of the former Cross Florida Barge Canal Project in 1992.

2. Description of the purpose for the parcel's acquisition (P-2000 or Florida Forever goals and criteria or similar purpose descriptions) or donation and any restrictions or conditions of use that apply to the parcel, if any.

Property was transferred back to the state for establishment and management as a mega linear recreational and conservation corridor. Property is subject to federal government oversight via the USACOE in Section 16 460 TT Federal Code.

3. Description of the current level of public recreational use or public access of the parcel.

The portion of the property intended for the requested project easement is not used by the public. It is a vegetated ruderal wetlands area between two fences.

4. Description of the natural resources, land cover, vegetation, habitat, or natural community, if any, that are currently present on the parcel.

Natural resources in the area are comprised of river floodplain species such as bald cypress, red maple, and mixed herbaceous ground cover.

5. Description and list of the imperiled and other wildlife species, if any, that occur on or use the parcel.

No imperiled or listed species are present based upon a site visit and location of property between two linear fences, a paved parking area on one side, and a paved roadway bisection in the area surrounded by residential development.

6. Description and list of historical or archaeological resources, if any, that occur or have the potential of occurring on the site.

Property being located in a wetland surrounded by residential development has limited archaeological resource potential. No known listed sites are located in this area. The Division of Historical Resources has requested the applicant have a professional cultural resources assessment survey conducted.

7. Formal alternative siting analysis that includes a description and assessment of other potential alternative sites and why they are not feasible or practicable alternatives.

Based upon meeting with FGUA staff and their consultants, the high-density residential areas surrounding this site have limited their options other than to this proposed property.

8. Assessment of the impacts the proposed alternative use will have on the natural/historical/archaeological/recreational resources, if any, as well as on the current public use and purpose for the site or parcel.

Placement of the new pipe to reroute wastewater for treatment at the City of Dunnellon wastewater treatment facility and is for public use and purpose for the site or parcel.

9. Assessment of the potential impacts on the larger area of conservation lands the parcel is located within (park, wildlife management area, forest trail, etc.) and on any surrounding conservation lands, if any.

Potential impacts on the overall Cross Florida Greenway are very minimal due to directional boring, open trench cut and placement of the pipe. Overall benefits include: Reducing nutrient loading via taking off line the now defunct package plant and sending to a municipal wastewater treatment facility. Improved water quality in the Rainbow River and Lake Rousseau.

10. Assessment of how the proposed package of consideration and net positive benefit for the requested alternative use of the parcel, such as the generally standard requirement for replacement land (depending on the parcel's size), will offset the impacts and benefit the larger area of conservation lands (park, forest, wildlife management area, trail system, etc.) the parcel is within and particularly how it will offset the impacts or benefit the natural/historical/archaeological resources, habitat, and public recreational uses of the public conservation area the parcel is located within.

Review and subsequent approval of this project is intended to improve water quality in the Rainbow Springs first magnitude springs recharge basin, as well as its surface waters. This project is intended to remove a failing package plant and reroute the wastewater from the to-be-abandoned package plant to the local City of Dunnellon wastewater treatment facility. This will provide significant long-term benefits to water quality in the OFW Rainbow River and Springs systems, as well as Lake Rousseau, downstream from the Rainbow River.

Name and Title of Person Completing Form Mickey Thomason Park Manager

Email Address Mickey.Thomason@FloridaDep.gov

Telephone Number (352) 236-7143

State of Florida Department of Environmental Protection