

ITEM 8:

Consider a 10-year update to the Lake Talquin State Park Management Plan (Lease No. 2537)

LOCATION:

Leon County

DSL STAFF REMARKS:

Background

Lake Talquin State Park (LTSP) is located in Leon County just 15 miles west of Tallahassee. Access to the park is from State Highway 20 via Jack Vause Landing Road. LTSP was initially acquired on December 15, 1970, by donation to the Board of Trustees of the Internal Improvement Trust Fund (Trustees) from Florida Power Corporation. Currently the park comprises 425.78 acres. The Trustees hold fee simple title to the park and on June 8, 1971, the Trustees leased (lease number 2537) the property to DRP under a 99-year lease. LTSP is designated single use to provide public outdoor recreation and conservation.

The purpose of LTSP is to protect one of the last natural stretches of bluff running along the high banks near Hwy 20 to Coe Landing near Hwy 90.

Management Plan Overview

The Florida Natural Areas Inventory (FNAI) has identified four distinct natural community types at LTSP. They also identified sixteen altered landcover type. The predominant natural communities are upland hardwood forest and slope forest. Five species of imperiled plants and eleven species of imperiled animals have been identified at LTSP.

The Division of Historical Resources (DHR) maintains a Master Site File that documents many of Florida's archaeological and historical features. A review of information obtained from the Florida Master Site File (FMSF) disclosed only one archaeological site within the park.

Recreational opportunities at LTSP include hiking, birding, canoeing, kayaking, fishing, picnicking, wildlife viewing and tours. Visitors can enjoy a 1.1-mile walk on the interpretive trails past many ravine systems to a bluff with a picturesque view that overlooks Lake Talquin. Visitors can enjoy the 650-foot-long boardwalk along the edge of Lake Talquin while fishing for various freshwater fish species. A large picnic pavilion and BBQ grill offers a peaceful place to eat lunch or rent out for larger events.

The Florida Legislature requires that all land management plans include long and short-term (ST) goals. These goals must be measurable objectives, and ST goals must be achievable within a two-year planning period. Pursuant to changes to Section 253.034, F.S., the Division of State Lands tracks the status of short-term goals in each land management plan approved since July 1, 2016. The short-term goals from this management plan are included as part of this item.

While the 10-year management plan serves as the basic statement of policy and future direction for each park, a number of annual work plans provide more specific guidance for DRP staff to accomplish many of the resource management goals and objectives of the park. Where such detailed planning is appropriate to the character and scale of the park's natural resources, annual work plans are developed for prescribed fire management, exotic plant management and imperiled species management. Annual or longer-term work plans are developed for natural community restoration and hydrological restoration.

Public Involvement

DRP solicited public input by conducting a public workshop on November 12, 2019. The purpose was to present the management plan to the public. On Wednesday November 13, 2019, an advisory Group meeting was held. The purpose of this meeting was to provide the Advisory Group members the opportunity to review and discuss the management plan.

New recreational opportunities and facilities have been proposed that are appropriate for this park and consistent with the DRP mission, these include:

- Construct observation deck and fishing platform.
- Enhance boater access and improve boat ramp.
- Repair fishing boardwalk.
- Add Shop and Residence to support area.

Surplus Lands

The evaluation by the DRP determined that no portion of the LTSP is recommended for a potential surplus designation.

State Land Management Review Team

This property has not been subject to a recent review by an inter-agency land management review team.

DSL STAFF RECOMMENDATION:

Approve the management plan.

ARC RECOMMENDATION:

APPROVE

APPROVE WITH MODIFICATIONS: _____

DEFER

WITHDRAW

NOT APPROVE

OTHER:

Lake Talquin State Park
Land management plan short term goals

Goal (ST)	Details of Goal	Objective	Details of Objective	Measure
II	Protect water quality and quantity, restore hydrology to the extent feasible, and maintain the restored condition.	A	Conduct / obtain an assessment of hydrological needs.	Assessment conducted.
III	Restore and maintain the natural communities / habitats.	B	Conduct habitat / natural community improvement activities on 4 acres of sandhill.	Number acres improved or underway.
VII	Provide public access and recreational opportunities.	B	Expand the park's recreational carrying capacity by 45 users.	Number recreation / visitor.
VIII	Develop and maintain the capital facilities and infrastructure necessary to meet the goals and objectives of this management plan.	E	Continue to implement the park's transitional plan to ensure facilities are accessible in accordance with the American with Disabilities Act of 1990.	Plan implemented.

Source: Florida DEP, Office of Environmental Services, Revised Sept_2019_MWE.

Lake Talquin State Park

Lead Agency: Department of Environmental Protection
Division of Recreation and Parks

Common Name of Property: Lake Talquin State Park

Location: Leon County

Direct Economic Impact: FY 17-18 14,775 visitors \$1.24 million and 17 jobs added to local economy

Acreage: 425.78 Acres

Acreage Breakdown

Natural Communities	Acres
Sandhill	4.16
Slope Forest	195.29
Upland Hardwood Forest	225.01
Seepage Stream	1.36

Lease/Management Agreement Number(s): 2537

Use: Single Use

Management Responsibilities

Agency: Dept. of Environmental Protection, Division of Recreation and Parks

Responsibility: Public Outdoor Recreation and Conservation

Designated Land Use: Public outdoor recreation and conservation is the designated single use of the property

Sublease: None

Encumbrances: See Addendum 1 for details

Type of Acquisition(s): See Addendum 1 for details

Unique Features

Overview: Lake Talquin State Park is located in Leon County just 15 miles west of Tallahassee. Access to the park is from State Highway 20 via Jack Vause Landing Road. Lake Talquin State Park was initially acquired on December 15, 1970 by donation to the Board of Trustees of the Internal Improvement Trust Fund (Trustees) from the Florida Power Corporation. Currently, the park comprises 425.78 acres. The Board of Trustees of the Internal Improvement Trust Fund (Trustees) hold fee simple title to the park

Lake Talquin State Park

and on June 8, 1971, the Trustees leased (Lease Number 2537) the property to DRP under a 99-year lease.

Natural: Lake Talquin State Park is an interesting park with a colorful history. The park is all that's left of the once 20,000+ acre Lake Talquin State Recreation Area, with the remaining upland tracts transferring to the Florida Division of Forestry. While small in size, the park is significant in several big ways. It protects one of the last natural stretches of bluff running along the high banks of the Ochlockonee River from Jackson Bluff near Hwy 20 to Cole Landing near Hwy 90. Beech/magnolia forests, Appalachian flora, clear seepage streams, and some of the most commanding views in Florida are among the gems the park has to offer. It has remained a special place all these years because it has remained minimally developed.

Archaeological/Historical: FMSF LE2128 is the park's only recorded archaeological site. The site was identified during archaeological survey prior to the installation of a new septic tank drain field for the day use restroom facility. Test pits recovered chert flakes indicative of tool maintenance and manufacture activities. While no culturally diagnostic artifacts were recovered, the nature of the chert materials and immediacy of surrounding freshwater resources suggest that further testing (above the 100 foot contour) would yield evidence of Weeden Island occupation.

Management Goals, Objectives and Actions

Measurable objectives and actions have been identified for each of the Division's management goals for Lake Talquin [State Park](#). Please refer to the Implementation Schedule and Cost Estimates in the Implementation Component of this plan for a consolidated spreadsheet of the recommended actions, measures of progress, target year for completion and estimated costs to fulfill the management goals and objectives of this park.

While, the Division of Recreation and Parks utilizes the ten-year management plan to serve as the basic statement of policy and future direction for each park, a number of annual work plans provide more specific guidance for Division staff to accomplish many of the resource management goals and objectives of the park. Where such detailed planning is appropriate to the character and scale of the park's natural resources, annual work plans are developed for prescribed fire management, exotic plant management and imperiled species management. Annual or longer-term work plans are developed for natural community restoration and hydrological restoration.

The work plans provide the Division with crucial flexibility in its efforts to generate and implement adaptive resource management practices in the state park system. The work plans are reviewed and updated annually. Through this process, the Division's resource management strategies are systematically evaluated to determine their effectiveness. The process and the information collected is used to refine techniques, methodologies and strategies, and ensures that each park's prescribed management actions are monitored and

Lake Talquin State Park

reported as required by Chapters 253.034 and 259.037, Florida Statutes. The goals, objectives and actions identified in this management plan will serve as the basis for developing annual work plans for the park. Since the plan is based on conditions that exist at the time the plan is developed, the annual work plans will provide the flexibility needed to adapt to future conditions as they change during the ten-year management planning cycle. As the park's annual work plans are implemented through the ten-year cycle, it may become necessary to adjust the management plan's priority schedules and cost estimates to reflect these changing conditions.

Natural Resource Management

Hydrological Management

Goal: Protect water quality and quantity in the park, restore hydrology to the extent feasible and maintain the restored condition.

- *Objective A: Conduct/obtain an assessment of the park's hydrological restoration needs.*

Natural Communities Management

Goal: Restore and maintain the natural communities/habitats of the park.

- *Objective A: Within 10 years, have 4 acres of the park maintained within optimum fire return interval.*
- *Objective B: Conduct natural community/habitat improvement activities on 4 acres of sandhill.*

Imperiled Species Management

Goal: Maintain, improve or restore imperiled species populations and habitats in the park.

- *Objective A: Update baseline imperiled species occurrence inventory lists for plants and animals.*
- *Objective B: Monitor and document 1 selected imperiled animal species.*
- *Objective C: Monitor and document 3 imperiled plant species in the park.*

Exotic Species Management

Goal: Remove exotic and invasive plants and animals from the park and conduct needed maintenance control.

- *Objective A: Annually treat 2 acres of exotic plant species in the park.*

Cultural Resource Management

Cultural Resource Management

Goal: Protect, preserve and maintain the cultural resources of the park.

Lake Talquin State Park

- Objective A: Assess and evaluate 1 of 1 recorded cultural resources in the park.
- Objective B: Compile reliable documentation for all recorded historic and archaeological resources.
- Maintain 1 of 1 recorded cultural sites in good condition.

Ten-Year Implementation Schedule and Cost Estimates: See Future Objectives Section, pages 12-20.

Acquisition Needs/Acreage: Two parcels of land that total approximately 12 acres have been identified to complete the optimum boundary for the park. The parcels are on the corner of Jack Vause Landing Road and SR 20 and have been identified due to the parcel's ability to improve the public access, allow a reconfigured entrance road, and allow better signage to notify motorists and visitors of the park's entrance.

Surplus Lands/Acreage: No lands are considered surplus to the needs of the park.

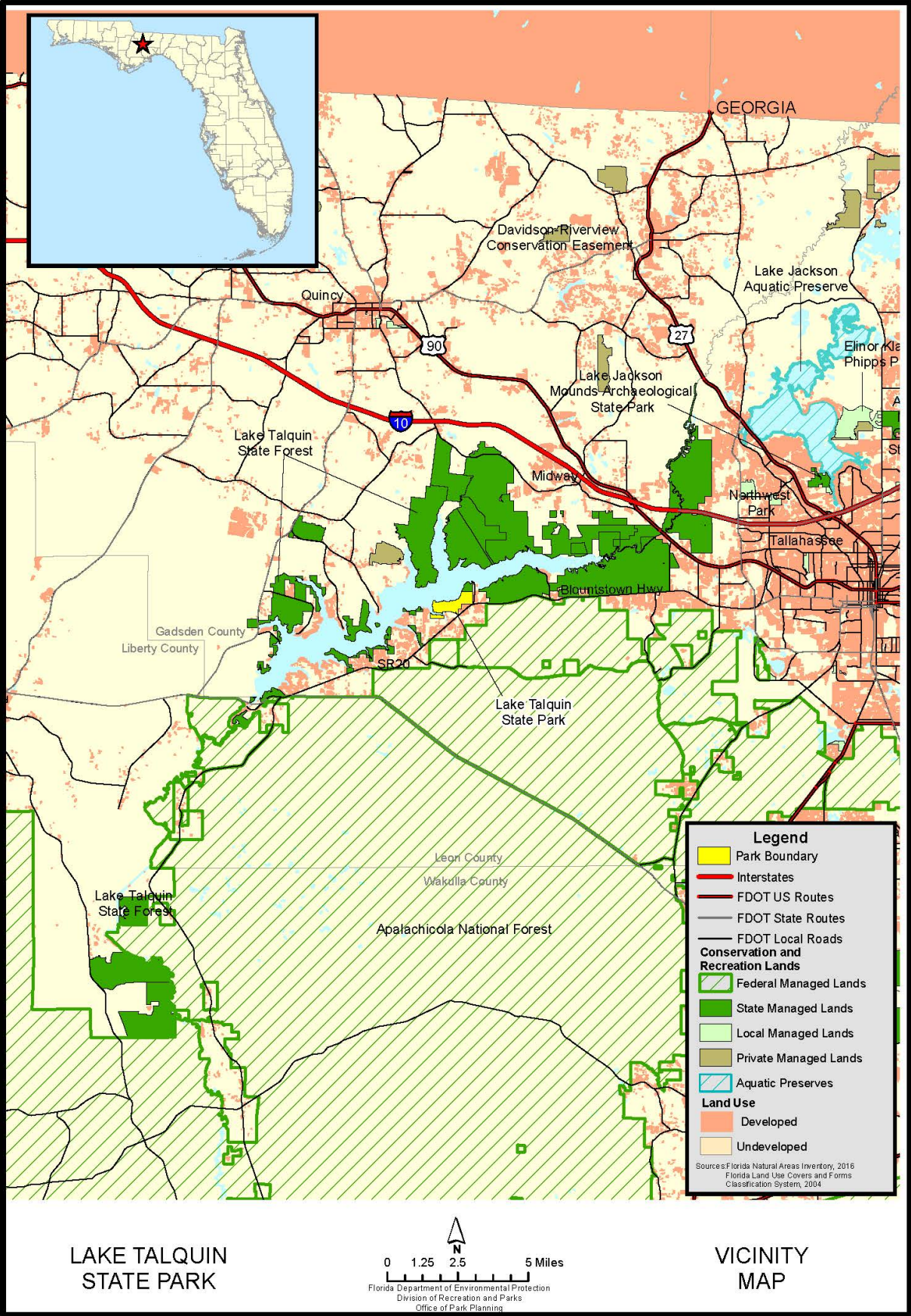
Public Involvement: DRP solicited public input by conducting a public workshop on Tuesday, November 12, 2019. The purpose was to present the management plan to the public. On Wednesday, November 13, 2019, an Advisory Group meeting was held. The purpose of this meeting was to provide the Advisory Group members the opportunity to review and discuss the management plan (see Addendum 2).

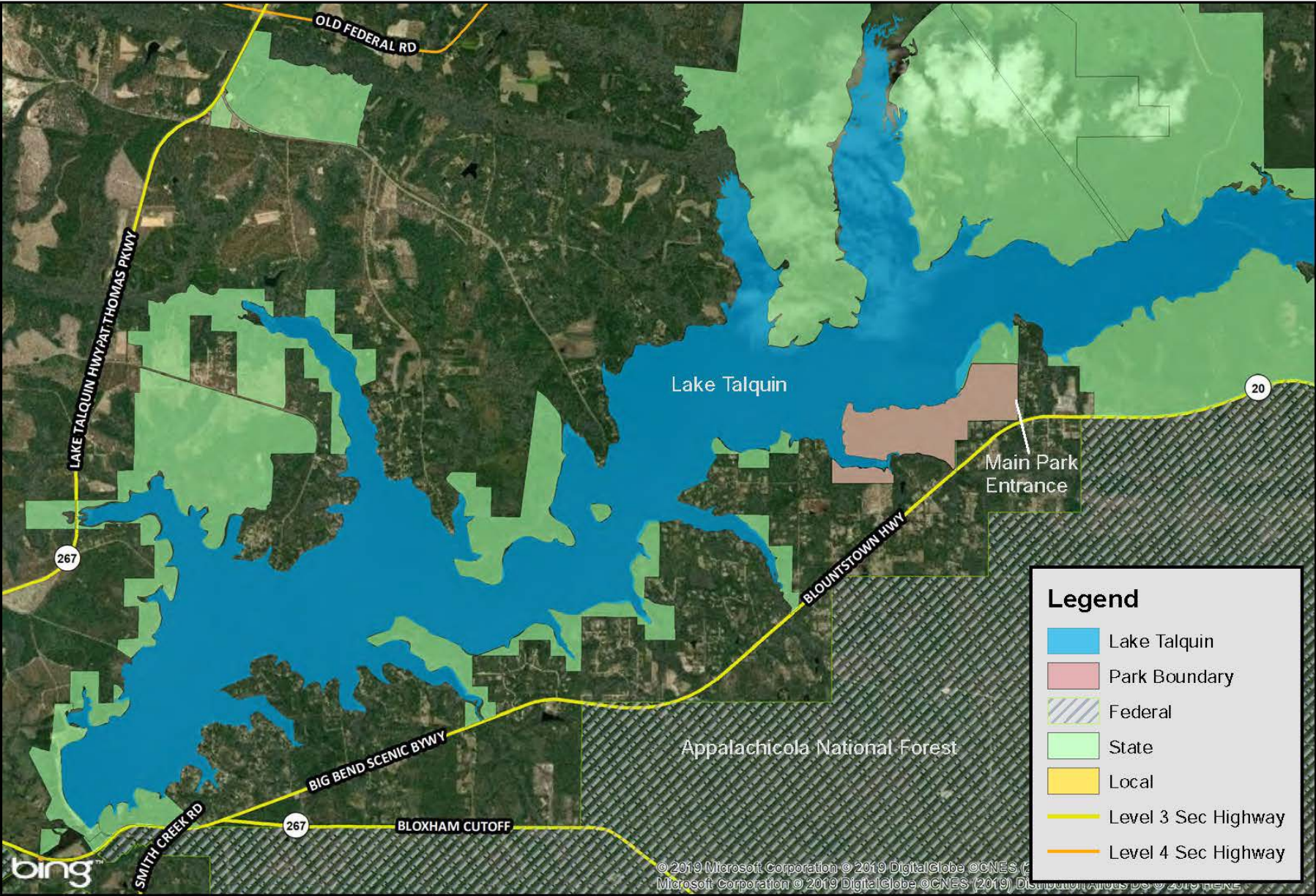
Summary of Significant Changes in the Management Plan Update

New recreational opportunities and facilities have been proposed that are appropriate for this park and consistent with the DRP mission. These include:

- Construct Observation Deck
- Enhance Boater Access
- Repair Fishing Boardwalk
- Improve Boat Ramp and Construct Fishing Platform
- Add Shop and Residence to Support Area

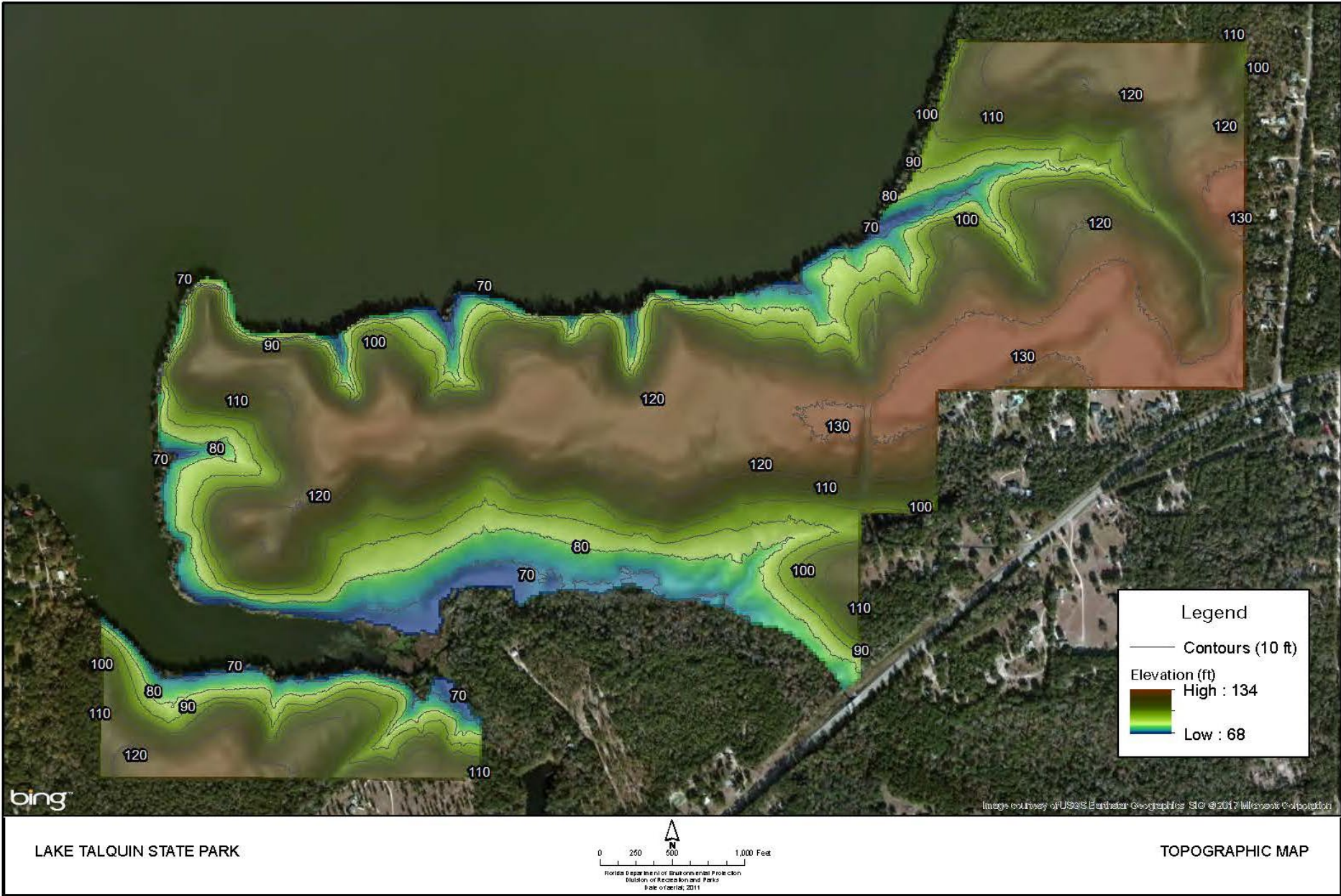
-

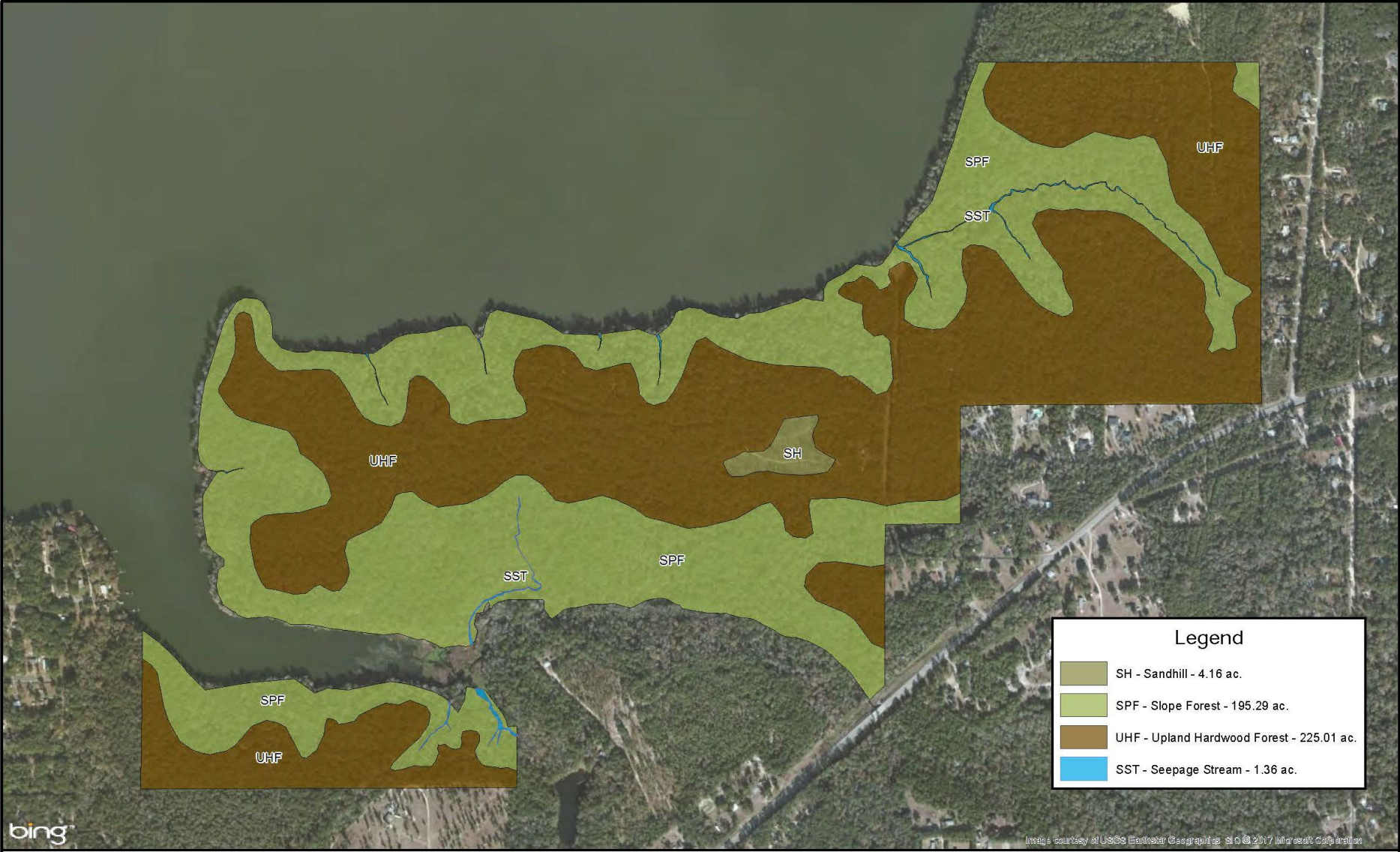




LAKE TALQUIN STATE PARK

REFERENCE MAP

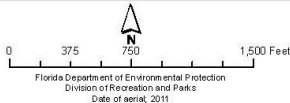




bing

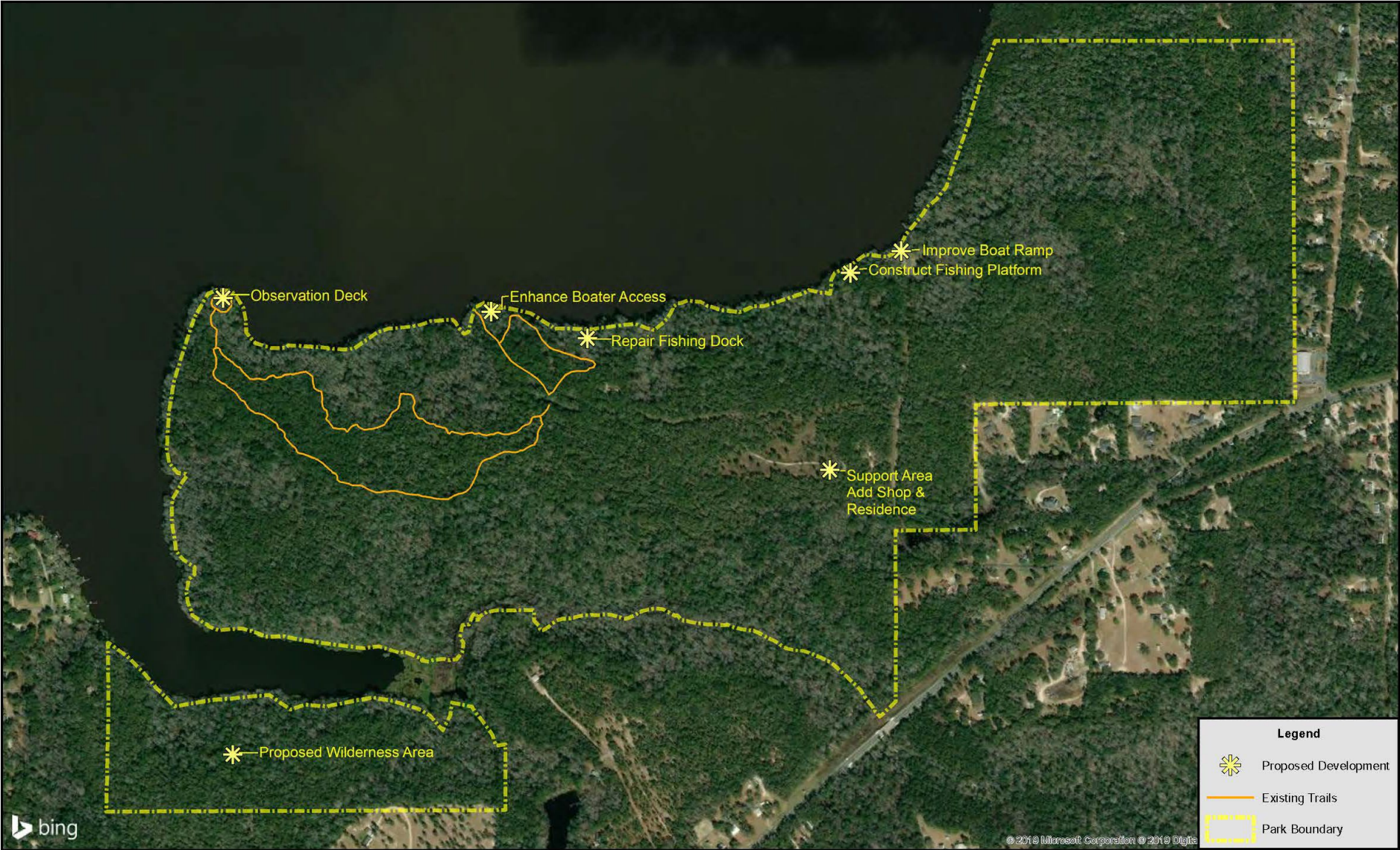
Images courtesy of USGS Earthstar Geographic S.I.D. © 2017 Microsoft Corporation

LAKE TALQUIN STATE PARK

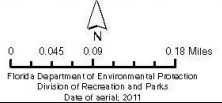


NATURAL COMMUNITIES MAP





LAKE TALQUIN STATE PARK



CONCEPTUAL LAND USE PLAN

