

ITEM 11:

Vote on whether to amend the Strategic Managed Area Lands List Florida Forever Project Boundary for the FWC to add one parcel totaling approximately 158 acres in Charlotte County with a tax assessed market value of \$604,350 and remove one property totaling approximately 40 acres in Taylor County.

LOCATION:

Charlotte and Taylor counties

DSL STAFF REMARKS:

The FWC Ennis Property amendment proposed by the Florida Fish and Wildlife Conservation Commission (FWC) adds one parcel in Charlotte County totaling approximately 158 acres to the Strategic Managed Area Lands List (SMALL) Florida Forever project. The proposal consists of one parcel owned by Gary Ennis with a tax assessed market value of \$604,350.

According to the 2018 ARC-approved SMALL Florida Forever project, “Once a strategic parcel is acquired or recommended by the identifying agency for removal from the project, the agency may submit a boundary amendment application to add another owners’ parcel in its place. This will ensure that ten parcels remain on each agency’s list.” FWC currently has ten parcels in this project, and FWC has asked that the parcels of another landowner (Bay View, LLC.) be removed from the SMALL project due to impasse. The proposed amendment will ensure that the FWC has 10 parcels on the SMALL list.

Fred C. Babcock – Cecil M. Webb Wildlife Management Area (BWWMA):

The Ennis property is the largest inholding within the BWWMA boundary and is proposed for fee simple acquisition. The landowners have been contacted and are willing sellers. The FWC has confirmed that the property would be managed as part of the BWWMA. The Ennis property is former dry prairie that has been heavily roller chopped and converted to pasture. A large population of the rare beautiful pawpaw (*Deeringothamnus pulchellus*), a plant endemic to Charlotte and Lee counties and listed as endangered is documented in the vicinity of this property. The Ennis property does not contain any structures but reportedly contains several early stage pine rosin pits; remnant features from Florida’s historic turpentine industry. If acquired, the site will allow for the effective use of prescribed fire, reduce wildfire risk, and protect imperiled species habitat within the BWWMA.

Boundary Amendment Criteria:

The proposal meets the criteria to be submitted as a boundary amendment. The parcel totals less than 1,000 acres, has a tax assessed value of less than \$2 million, and is less than 10% of the size of the overall project to which it is being added. The proposal area should be designated as essential.

Project History:

In October 2018, ARC approved the SMALL project. Sponsored by the DEP Division of Recreation and Parks, the DEP Office of Greenways and Trails, the DACS Florida Forest Service, and the Florida Fish and Wildlife Conservation Commission, SMALL is a collection of single ownerships statewide that would augment or improve management of existing state-managed conservation lands, if acquired. The parcels included have been identified as part of the

optimum management boundary within the approved management plans of the respective managed area. None of these parcels are located within the boundary of another Florida Forever project on the priority list.

The SMALL project includes over 11,898 acres with 11,572 acres remaining and is ranked number eight in the Critical Natural Lands category on the 2021 Florida Forever Priority List. The tax assessed value for the remaining acres to be acquired in this project per property appraiser information (2019) is \$51,010,162.

FNAI Review:

According to the Florida Natural Areas Inventory (FNAI), Florida Forever Measures Evaluation 100% of the Ennis property contributes to FNAI Habitat Conservation Priorities, Ecological Greenways, Under-represented Natural Communities, Surface Water Protection, Aquifer Recharge and Sustainable Forestry.

STAFF RECOMMENDATION:

Vote on the proposed boundary amendment.

ARC RECOMMENDATION:

Project	DHR	FFS	Lynetta Griner	FWC	Bill Palmer	Elva Peppers	DEP	Selected
Strategic Managed Areas Lands List FWC: add Ennis Property; remove Bay View, LLC.								



To: Deborah Burr, DEP/OES
From: Dale R. Jackson, FNAI
Date: March 9, 2021
Subject: Proposed boundary modification (addition) to Florida Forever BOT
Project: **Strategic Managed Areas Lands List (SMALL)** –
Babcock/Webb Wildlife Management Area: Ennis property, Charlotte
County

The major goals of the Strategic Managed Areas Lands List Florida Forever (FF) Project are to enhance protection of natural resources on existing public lands and to facilitate their management. Addition of the Ennis property to Babcock/Webb Wildlife Management Area is intended to meet these goals.

The proposed addition is a 158-acre (163.75 GIS acres) inholding in the Fred C. Babcock-Cecil M. Webb Wildlife Management Area in central Charlotte County. The proposal is a flat parcel 34 feet in elevation. Nearly the entire site (ca. 98%) appears to be roller-chopped (and potentially clearcut) mesic flatwoods and dry prairie converted to cattle pasture (the FFME below still recognizes these as natural communities, but ground-truthing is needed to determine if this is appropriate). One small block of mesic flatwoods (3.4 ac.) abuts the northern boundary, and a few scattered trees stand in a patch along the southern boundary. The site supports no visible structures and is crossed fully by two unpaved roads (north-south and east-west).

The FNAI database contains records of three rare species on site – beautiful pawpaw (*Deeringnothamnus pulchellus*, G1S1, E, E; many plants documented in 2017), gopher tortoise (*Gopherus polyphemus*, G3S3, C, ST; one documented in 2017), and Florida black bear (*Ursus americanus floridanus*, G5T4/S4, N, N; considered common regionally by the Florida Fish and Wildlife Conservation Commission). Other species may utilize the site, particularly in the future with more ecosystem-based management.

The Florida Forever Measures Evaluation (FFME) at the end of this memo is based on the Florida Forever Conservation Needs Assessment developed by FNAI. The data used in that analysis represent a standardized, statewide perspective of natural community distributions based primarily on data from the Cooperative Land Cover Map. The proposed addition contributes substantially to protection of Ecological Greenways, Under-represented Natural Communities (97% dry prairie, 3% mesic/wet flatwoods, though these have been disturbed), Surface Water Protection, and Aquifer Recharge.

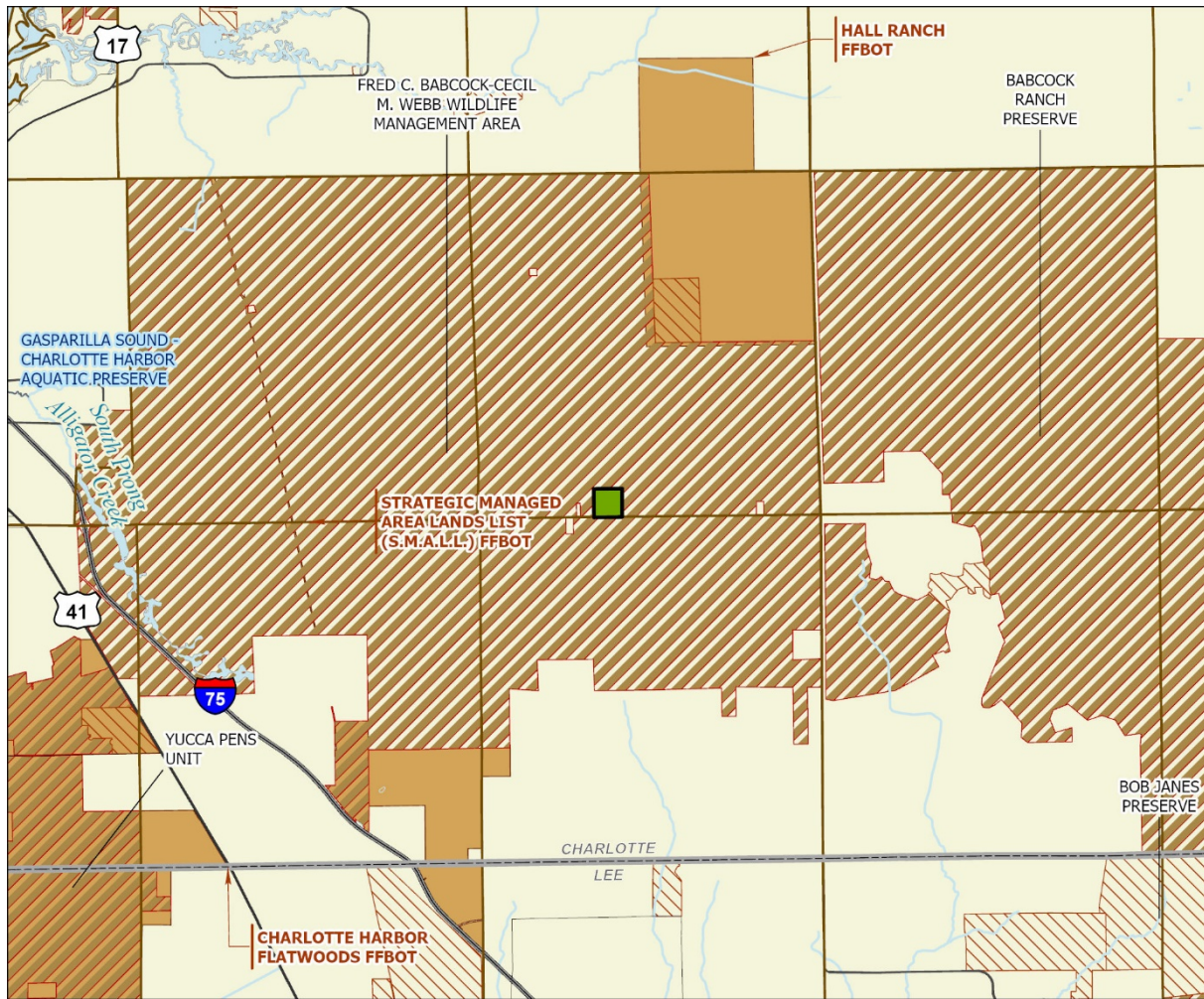
S.M.A.L.L. Addition (Ennis): Florida Forever Measure Evaluation 20210305

GIS ACRES = 163.75

MEASURES	Resource Acres ^a	% of project
B1: Strategic Habitat Conservation Areas		
Priority 1	0.00	0%
Priority 2	9.84	6%
Priority 3	0.00	0%
Priority 4	0.22	< 1%
Priority 5	0.00	0%
Total Acres	10.06	6%
B2: FNAI Habitat Conservation Priorities		
Priority 1	3.28	2%
Priority 2	0.00	0%
Priority 3	5.17	3%
Priority 4	60.49	37%
Priority 5	93.91	58%
Priority 6	0.00	0%
Total Acres	162.85	100%
B3: Ecological Greenways		
Priority 1	0.00	0%
Priority 2	9.62	6%
Priority 3	0.00	0%
Priority 4	0.00	0%
Priority 5	153.23	94%
Priority 6	0.00	0%
Total Acres	162.85	100%
B4: Under-represented Natural Communities		
Upland Glade (G1)	0.00	0%
Pine Rockland (G1)	0.00	0%
Scrub and Scrubby Flatwoods (G2)	0.00	0%
Rockland Hammock (G2)	0.00	0%
Dry Prairie (G2)	157.23	97%
Seepage Slope (G2)	0.00	0%
Sandhill (G3)	0.00	0%
Sandhill Upland Lake (G3)	0.00	0%
Upland Pine (G3)	0.00	0%
Mesic/Wet Flatwoods (G4)	5.62	3%
Upland Hardwood Forest (G5)	0.00	0%
Total Acres	162.85	100%
B6: Occurrences of FNAI Tracked Species		
G1	1	
G2	0	
G3	1	
G4	1	
G5	0	
Total	3	
C4: Natural Floodplain Function		
Priority 1	3.56	2%
Priority 2	0.00	0%
Priority 3	0.00	0%
Priority 4	0.00	0%
Priority 5	0.00	0%
Priority 6	0.00	0%
Total Acres	3.56	2%

MEASURES (continued)	Resource Acres ^a	% of project
C5: Surface Water Protection		
Priority 1	0.00	0%
Priority 2	5.84	4%
Priority 3	0.00	0%
Priority 4	157.01	96%
Priority 5	0.00	0%
Priority 6	0.00	0%
Priority 7	0.00	0%
Total Acres	162.85	100%
C7: Fragile Coastal Resources		
Fragile Coastal Uplands	0.00	0%
Imperiled Coastal Lakes	0.00	0%
Coastal Wetlands	0.00	0%
Total Acres	0.00	0%
C8: Functional Wetlands		
Priority 1	1.67	1%
Priority 2	0.67	< 1%
Priority 3	0.00	0%
Priority 4	0.00	0%
Priority 5	0.00	0%
Priority 6	0.00	0%
Total Acres	2.34	1%
D3: Aquifer Recharge		
Priority 1	0.00	0%
Priority 2	0.00	0%
Priority 3	0.00	0%
Priority 4	90.07	55%
Priority 5	72.78	45%
Priority 6	0.00	0%
Total Acres	162.85	100%
E2: Recreational Trails (miles)		
<small>(prioritized trail opportunities from Office of Greenways and Trails & Univ. Florida)</small>		
Land Trail Priorities	0.0	
Land Trail Opportunities	0.0	
Total Miles	0.0	
F2: Arch. & Historical Sites (number)		
0 sites		
G1: Sustainable Forestry		
Priority 1	8.45	5%
Priority 2	0.00	0%
Priority 3	2.89	2%
Priority 4	0.00	0%
Priority 5 - Potential Pinelands	151.45	93%
Total Acres	162.79	100%
G3: Forestland for Recharge		
	0.00	0%

^aAcres of each resource in the project and percentage of project represented by each resource are listed except where noted. This analysis converts site boundary into pixels, which causes slight differences from GIS acres; this effect is most noticeable on small sites.



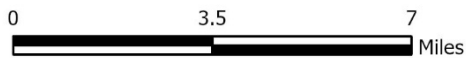
S.M.A.L.L. PROPOSED ADDITION (ENNIS)

CHARLOTTE COUNTY

-  Proposed Florida Forever BOT Project Addition
-  Florida Forever BOT Projects
-  State Owned Lands
-  Other Conservation Lands
-  State Aquatic Preserve

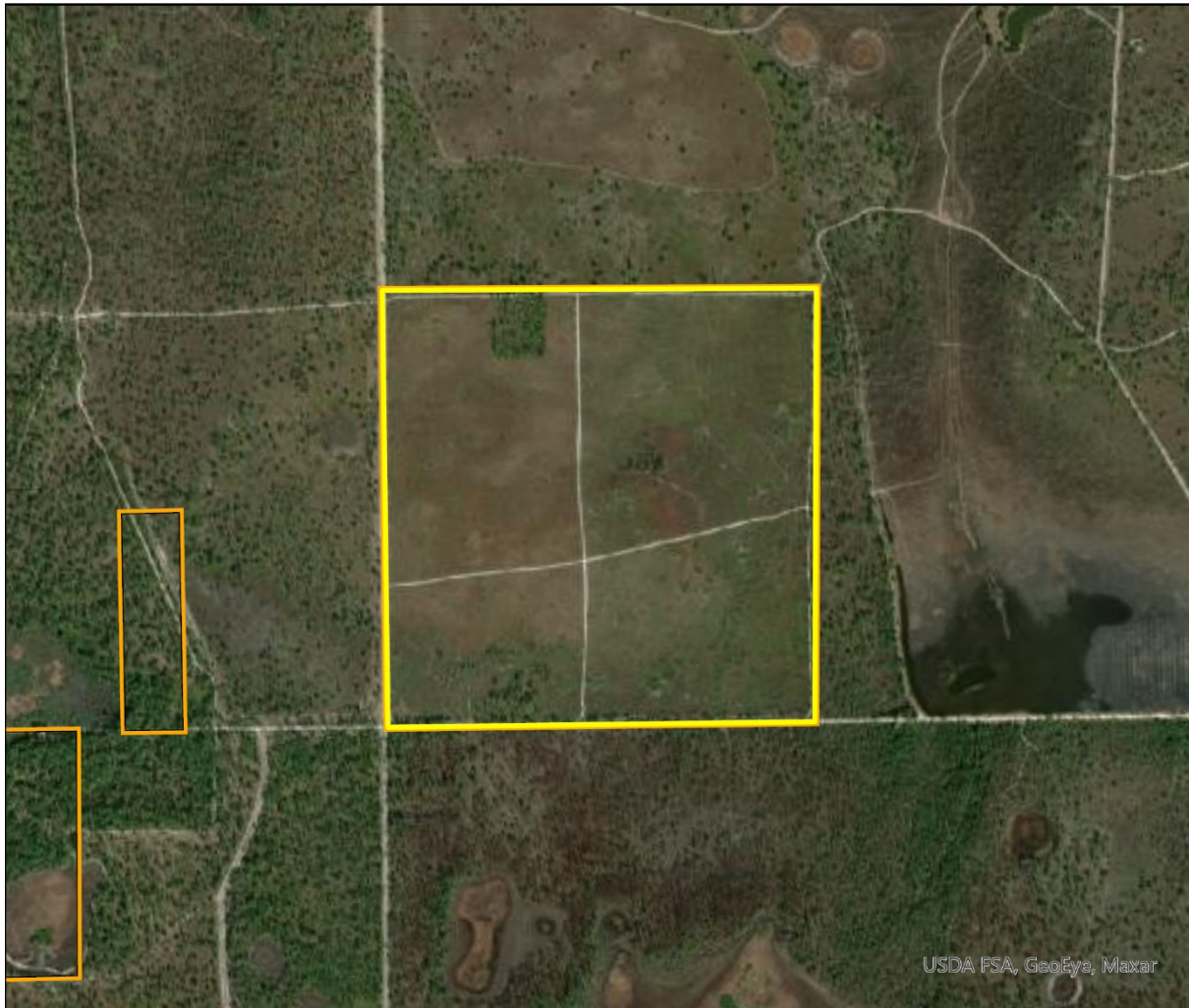


MARCH 2021



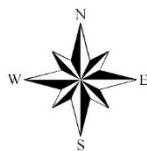
S.M.A.L.L. Proposed Addition (Ennis)

FLORIDA FOREVER BOARD OF TRUSTEES PROJECT PROPOSAL BOUNDARY AS OF MARCH 2021



Map Produced by: N. Pasco, March 2021

Background: World Imagery Resolution = 0.3 meter



1018 Thomasville Road
Suite 200-C
Tallahassee, Florida 32303
850-224-8207
fax 850-681-9364
www.fnai.org

