

ITEM 12:

Vote on whether to amend the Strategic Managed Area Lands List Florida Forever Project Boundary for the FWC to add two properties totaling approximately 161 acres in Franklin and Glades counties with a tax assessed market value of \$1,064,036.

LOCATION:

Franklin and Glades counties

DSL STAFF REMARKS:

The proposed amendment represents two new properties proposed by the Florida Fish and Wildlife Conservation Commission (FWC). These two properties in Franklin and Glades counties will add approximately 161 acres to the Strategic Managed Area Lands List (SMALL) Florida Forever project and have a combined tax assessed value of \$1,064,036.

According to the SMALL Florida Forever project, "Once a strategic parcel is acquired or recommended by the identifying agency for removal from the project, the agency may submit a boundary amendment application to add another owners' parcel in its place. This will ensure that no more than 60 ownerships/parcels are included in the project." FWC currently has 10 parcels out of 15 available slots in this project. However, two parcels are currently in the process of acquisition by the State. The proposed parcel additions would fill the two anticipated parcel vacancies.

Apalachicola River Wildlife and Environmental Area (ARWEA) Addition:

The Southwest Timber Coastal, LLC property is comprised of one 40.89-acre parcel in Franklin County and is proposed as a fee-simple acquisition. This parcel is contiguous with the boundary of ARWEA on the north and west sides adjacent to Blounts Bay. The landowner has been contacted and is a willing seller. The FWC has confirmed that the property would be managed by the agency as part of the ARWEA. Roughly two-thirds of the site is forested with the remainder composed of cleared land and open water. The property provides valuable habitat for many imperiled species, such as the Florida black bear. The property is identified as Florida Ecological Greenways Network (FEGN) Priority 1.

FWC notes that the parcel abuts a large burn unit and critical fire line important for prescribed burning operations. Acquisition of this parcel would enhance natural resource protection, allow for expanded public recreational opportunities and the enhance safety and efficiency of the prescribed fire program within the ARWEA.

Fisheating Creek Wildlife Management Area (WMA) Addition:

The McLaughlin property is comprised of one 123-acre parcel in Glades County and is proposed as a fee-simple acquisition. The landowner has been contacted and is a willing seller. However, the landowner has requested to maintain a five-acre life estate on the property. FWC has confirmed that the property would be managed by the agency as a part of the Fisheating Creek WMA. This parcel would add critical habitat within the WMA for imperiled species such as the Florida panther, the Florida back bear and the red-cockaded woodpecker. The property is identified as FEGN Priority 1. This parcel would also allow expansion of the WMA's existing recreational activities like hiking, bird watching and hunting.

Boundary Amendment Criteria:

The proposal meets the criteria to be submitted as a boundary amendment. The parcels total less than 1,000 acres, have a tax assessed value of less than \$2 million, and are less than 10% of the size of the overall project to which it is being added. The proposal areas should be designated as essential.

Project History:

ARC approved the SMALL project in October 2018, to enhance or facilitate management of properties under public ownership. Sponsored by the DEP Division of Recreation and Parks, the DEP Office of Greenways and Trails, the DACS Florida Forest Service, and the Florida Fish and Wildlife Conservation Commission. The parcels included have been identified as part of the optimum management boundary within the approved management plans of the respective managed area. None of these parcels are located within the boundary of another Florida Forever project on the priority list. In August 2021, ARC approved a modification to include the DEP Office of Resilience and Coastal Protection and increase the number of ownerships within the project from 10 to 15 for each agency.

The SMALL project includes over 11,844 acres with 11,518 acres remaining to be acquired and is ranked number eight in the Critical Natural Lands category on the 2022 Florida Forever Priority List. The tax assessed value for the remaining acres to be acquired in this project per property appraiser information (2020) is \$53,15,920.

FNAI Review:

According to the Florida Natural Areas Inventory (FNAI) Florida Forever Measures Evaluation (FFME), the proposed Southwest Timber Coastal, LLC property contributes substantially to Ecological Greenways (100%), Surface Water Protection (97%), Natural Floodplain Function (97%), Aquifer Recharge (88%), FNAI Habitat Conservation Priorities (85%), Strategic Habitat Conservation Areas (75%), and Functional Wetlands (72%).

According to the FNAI FFME, the proposed McLaughlin property contributes substantially to Ecological Greenways (100%), Surface Water Protection (100%), Aquifer Recharge (100%), FNAI Habitat Conservation Priorities (100%), Strategic Habitat Conservation Areas (98%), Sustainable Forestry (98%), and Under-Represented Natural Communities (89%).

STAFF RECOMMENDATION:

Vote on the proposed boundary amendment.

ARC RECOMMENDATION:

Project	DHR	FFS	Lynetta Griner	FWC	Bill Palmer	Elva Peppers	DEP	Selected
SMALL: add Southwest Timber Coastal, LLC and McLaughlin property								



To: Sine Murray, DEP/OES
 From: Dale Jackson, FNAI
 Date: June 20, 2022
 Subject: Proposed Boundary Modification to Florida Forever BOT Project: SMALL – ARWEA (Apalachicola River Wildlife and Environmental Area)

The major goals of the Strategic Managed Areas Lands List Florida Forever (FF) Project are to enhance protection of natural resources on existing public lands and to facilitate their management. The proposed 40.89-acre Southwest Timber Coastal LLC property addition to Apalachicola River Wildlife and Environmental Area (ARWEA) in southwestern Franklin County is intended to meet these goals. The narrow tract of land is contiguous with the boundary of ARWEA on the parcels north and west sides adjacent to Blounts Bay of East Bay (of Apalachicola Bay). The property is proposed for fee-simple acquisition.

Roughly two-thirds of the site is forested, with the remainder including cleared land and open water. A clearing with a three-bedroom house and large garage lies just south of the property's center. The northern half of the property supports mesic and wet flatwoods, patches of which also lie south of the house. All wetlands on the property appear to have been at least partially excavated, perhaps to promote fishing; the lake immediately north of the house includes a bridge to a small island. A boardwalk in the site's southwestern corner leads to saltmarsh at the edge of the marine embayment. The site is accessed by an unpaved road from the east that then runs along the property's eastern boundary feeds a network of roads on the property.

Florida black bear (*Ursus americanus floridanus*, G5T4/S4, N, N), is considered by the Florida Fish and Wildlife Conservation Commission to be regionally abundant in the vicinity of the proposed modification. The FNAI database contains no other records of rare species on site.

The Florida Forever Measures Evaluation (FFME) following this memo is based on the Florida Forever Conservation Needs Assessment developed by FNAI. The data used in that analysis represent a standardized, statewide perspective of natural community distributions based primarily on data from the Cooperative Land Cover Map. The proposed addition contributes substantially (>70%) to Ecological Greenways (mostly Priority 5), Surface Water Protection, Natural Floodplain Function, Aquifer Recharge (Priorities 4 and 5), and Functional Wetlands. Smaller contributions (<50%) are to Sustainable Forestry and Under-represented Natural Communities (mesic/wet flatwoods).

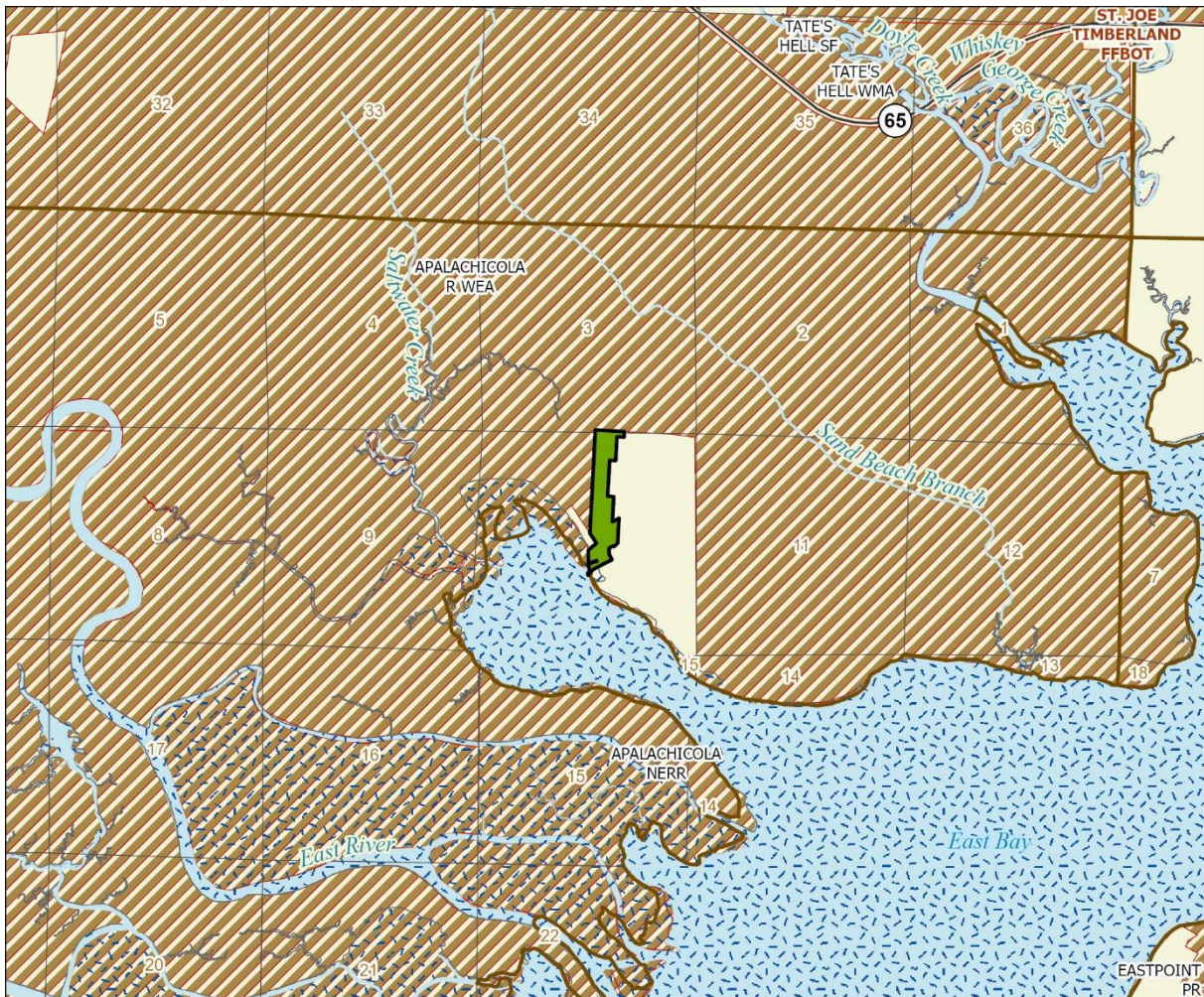
S.M.A.L.L. (Southwest Timber Coastal Property): Florida Forever Measure Evaluation 202200607

GIS ACRES = 40

MEASURES	Resource Acres ²	% of project
B1: Strategic Habitat Conservation Areas		
Priority 1	0	0%
Priority 2	3	6%
Priority 3	2	4%
Priority 4	0	0%
Priority 5	26	64%
Total Acres	30	75%
B2: FNAI Habitat Conservation Priorities		
Priority 1	0	0%
Priority 2	0	0%
Priority 3	8	20%
Priority 4	23	57%
Priority 5	3	7%
Priority 6	0	0%
Total Acres	34	85%
B3: Ecological Greenways		
Priority 1	3	8%
Priority 2	0	0%
Priority 3	0	0%
Priority 4	0	0%
Priority 5	37	92%
Total Acres	40	100%
B4: Under-represented Natural Communities		
Upland Glade (G1)	0	0%
Pine Rockland (G1)	0	0%
Scrub and Scrubby Flatwoods (G2)	0	0%
Rockland Hammock (G2)	0	0%
Dry Prairie (G2)	0	0%
Seepage Slope (G2)	0	0%
Sandhill (G3)	0	0%
Sandhill Upland Lake (G3)	0	0%
Upland Pine (G3)	0	0%
Mesic/Wet Flatwoods (G4)	13	31%
Upland Hardwood Forest (G5)	0	0%
Total Acres	13	31%
B6: Occurrences of FNAI Tracked Species		
G1	0	
G2	0	
G3	0	
G4	1	
G5	0	
Total	1	
C4: Natural Floodplain Function		
Priority 1	8	19%
Priority 2	30	74%
Priority 3	2	4%
Priority 4	0	0%
Priority 5	0	0%
Priority 6	0	0%
Total Acres	39	97%

MEASURES (continued)	Resource Acres ²	% of project
C5: Surface Water Protection		
Priority 1	21	52%
Priority 2	0	0%
Priority 3	0	0%
Priority 4	18	46%
Priority 5	0	0%
Priority 6	0	0%
Priority 7	0	0%
Total Acres	39	97%
C7: Fragile Coastal Resources		
Fragile Coastal Uplands	0	0%
Imperiled Coastal Lakes	0	0%
Coastal Wetlands	1	4%
Total Acres	1	4%
C8: Functional Wetlands		
Priority 1	7	17%
Priority 2	22	55%
Priority 3	0	0%
Priority 4	0	0%
Priority 5	0	0%
Priority 6	0	0%
Total Acres	29	72%
D3: Aquifer Recharge		
Priority 1	0	0%
Priority 2	0	0%
Priority 3	0	0%
Priority 4	31	77%
Priority 5	5	11%
Priority 6	0	0%
Total Acres	35	88%
E2: Recreational Trails (miles) <small>(prioritized trail opportunities from Office of Greenways and Trails & Univ. Florida)</small>		
Land Trail Priorities	0.0	
Land Trail Opportunities	0.0	
Total Miles	0.0	
F2: Arch. & Historical Sites (number) 0 sites		
G1: Sustainable Forestry		
Priority 1	11	27%
Priority 2	2	5%
Priority 3	3	8%
Priority 4	0	0%
Priority 5 - Potential Pinelands	0	0%
Total Acres	16	40%
G3: Forestland for Recharge 0 0%		

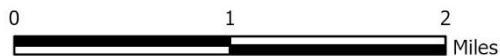
*Acres of each resource in the project and percentage of project represented by each resource are listed except where noted. This analysis converts site boundary into pixels, which causes slight differences from GIS acres; this effect is most noticeable on small sites.



**STRATEGIC MANAGED AREA LANDS LIST
PROPOSED ADDITION (APALACHICOLA RIVER WEA)**

FRANKLIN COUNTY

-  Proposed Addition
-  Florida Forever BOT Projects
-  State Owned Lands
-  Other Conservation Lands
-  State Aquatic Preserve



JUNE 2022

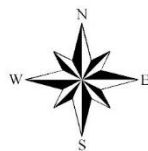
Strategic Managed Area Lands List Proposed Addition (Apalachicola River WEA)

FLORIDA FOREVER BOARD OF TRUSTEES PROJECT PROPOSED ADDITION AS OF JULY 2022



Map Produced by: N. Pasco, July 2022

Background: World Imagery Resolution = 0.3 meter



1018 Thomasville Road
Suite 200-C
Tallahassee, Florida 32303
850-224-8207
fax 850-681-9364
www.fnai.org





To: Sine Murray, DEP/OES
 From: Dale Jackson, FNAI
 Date: June 17, 2022
 Subject: Proposed Boundary Modification to Florida Forever BOT Project: SMALL
 Fisheating Creek Wildlife Management Area (McLaughlin property)

The major goals of the Strategic Managed Areas Lands List (SMALL) Florida Forever (FF) Project are to enhance protection of natural resources on existing public lands and to facilitate their management. The proposed 123-acre (125 GIS acres) McLaughlin property addition to Fisheating Creek Wildlife Management Area (WMA) in northwestern Glades County is intended to meet these goals. The property is proposed for fee-simple acquisition but with a 5-acre life estate. The tract is an inholding within the existing Fisheating Creek Ecosystem (FCE) Florida Forever BOT project (the top-ranked Less-Than-Fee FFBOT project), of which >68,500 acres (Oct 2021) have been protected. Protected lands include the contiguous Fisheating Creek/Lykes Brothers Conservation Easement (which surrounds the eastern portion of the proposal) and Fisheating Creek WMA (which runs along the creek itself and approaches within 40 m of the proposal). The western portion of the proposal is surrounded by the FCE FFBOT project.

The property is situated ca. 1125 ft (350 m) west of Fisheating Creek and ca. 2 miles (3 km) north of the confluence of Rainey Slough. Property relief is low, between 65 ft and 69 ft. Although the tract itself is mostly naturally vegetated, extensive conversion of lands to agriculture has occurred in the surrounding landscape. Landcover within the property is primarily mesic and wet flatwoods (89% per GIS analysis) that appear to have minimal disturbances/alteration other than the road network. Three nearly interconnected clearings occur within the western portion of the tract. The middle of these supports a residence with associated buildings. The northern clearing contains an excavated small pond (0.1 acre/0.04 ha). The site supports a series of dirt roads that are most conspicuous as a grid within its eastern portion. About one-fourth of a mostly offsite depression marsh enters the southwestern portion of the site; the remainder of the marsh is within the FCE FFBOT project.

The FNAI database contains records of three rare species on site. The tract lies within documented habitat of the Florida panther (*Puma concolor coryi*, G5T1/S1, E, E) and Florida black bear (*Ursus americanus floridanus*, G5T4/S4, N, N), which is considered by the Florida Fish and Wildlife Conservation Commission to be regionally abundant. Additionally, a potentially extirpated cluster of the red-cockaded woodpecker (*Dryobates borealis*, G3S2, E, PT) overlaps the site.

The Florida Forever Measures Evaluation (FFME) following this memo is based on the Florida Forever Conservation Needs Assessment developed by FNAI. The data used in that analysis represent a standardized, statewide perspective of natural community distributions based primarily on data from the Cooperative Land Cover Map. Most to all of the proposed addition contributes to Ecological Greenways, Under-represented Natural Communities (89% mesic/wet flatwoods), Surface Water Protection, Aquifer Recharge, and Sustainable Forestry.

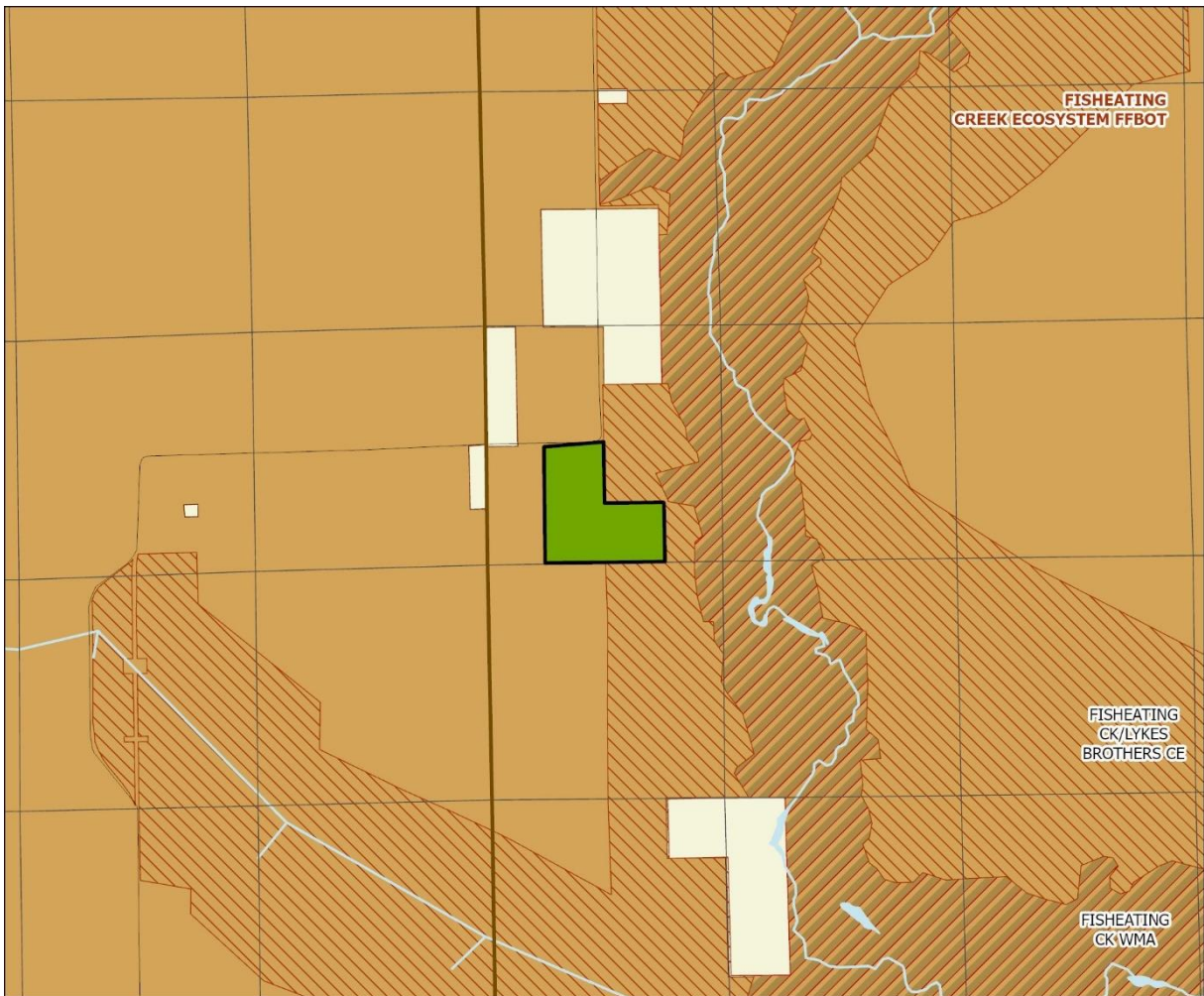
S.M.A.L.L. (Fisheating Creeking WMA): Florida Forever Measure Evaluation 20220607

GIS ACRES = 125

MEASURES	Resource Acres ²	% of project
B1: Strategic Habitat Conservation Areas		
Priority 1	124	98%
Priority 2	0	0%
Priority 3	0	0%
Priority 4	0	0%
Priority 5	0	0%
Total Acres	124	98%
B2: FNAI Habitat Conservation Priorities		
Priority 1	0	0%
Priority 2	0	0%
Priority 3	111	88%
Priority 4	15	12%
Priority 5	0	0%
Priority 6	0	0%
Total Acres	126	100%
B3: Ecological Greenways		
Priority 1	126	100%
Priority 2	0	0%
Priority 3	0	0%
Priority 4	0	0%
Priority 5	0	0%
Total Acres	126	100%
B4: Under-represented Natural Communities		
Upland Glade (G1)	0	0%
Pine Rockland (G1)	0	0%
Scrub and Scrubby Flatwoods (G2)	0	0%
Rockland Hammock (G2)	0	0%
Dry Prairie (G2)	0	0%
Seepage Slope (G2)	0	0%
Sandhill (G3)	0	0%
Sandhill Upland Lake (G3)	0	0%
Upland Pine (G3)	0	0%
Mesic/Wet Flatwoods (G4)	113	89%
Upland Hardwood Forest (G5)	0	0%
Total Acres	113	89%
B6: Occurrences of FNAI Tracked Species		
G1	0	
G2	0	
G3	0	
G4	1	
G5	0	
Total	1	
C4: Natural Floodplain Function		
Priority 1	0	0%
Priority 2	0	0%
Priority 3	2	2%
Priority 4	0	0%
Priority 5	0	0%
Priority 6	0	0%
Total Acres	2	2%





MEASURES (continued)	Resource Acres ²	% of project
C5: Surface Water Protection		
Priority 1	0	0%
Priority 2	0	0%
Priority 3	0	0%
Priority 4	126	100%
Priority 5	0	0%
Priority 6	0	0%
Priority 7	0	0%
Total Acres	126	100%
C7: Fragile Coastal Resources		
Fragile Coastal Uplands	0	0%
Imperiled Coastal Lakes	0	0%
Coastal Wetlands	0	0%
Total Acres	0	0%
C8: Functional Wetlands		
Priority 1	0	0%
Priority 2	0	0%
Priority 3	2	2%
Priority 4	0	0%
Priority 5	0	0%
Priority 6	0	0%
Total Acres	2	2%
D3: Aquifer Recharge		
Priority 1	0	0%
Priority 2	0	0%
Priority 3	0	0%
Priority 4	75	59%
Priority 5	52	41%
Priority 6	0	0%
Total Acres	126	100%
E2: Recreational Trails (miles) <small>(prioritized trail opportunities from Office of Greenways and Trails & Univ. Florida)</small>		
Land Trail Priorities	0.0	
Land Trail Opportunities	0.0	
Total Miles	0.0	
F2: Arch. & Historical Sites (number)		
	0 sites	
G1: Sustainable Forestry		
Priority 1	0	0%
Priority 2	124	98%
Priority 3	0	0%
Priority 4	0	0%
Priority 5 - Potential Pinelands	0	0%
Total Acres	124	98%
G3: Forestland for Recharge		
	0	0%

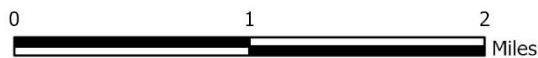
*Acres of each resource in the project and percentage of project represented by each resource are listed except where noted. This analysis converts site boundary into pixels, which causes slight differences from GIS acres; this effect is most noticeable on small sites.



**STRATEGIC MANAGED AREA LANDS LIST
PROPOSED ADDITION (FISHEATING CREEK WMA)**

GLADES COUNTY

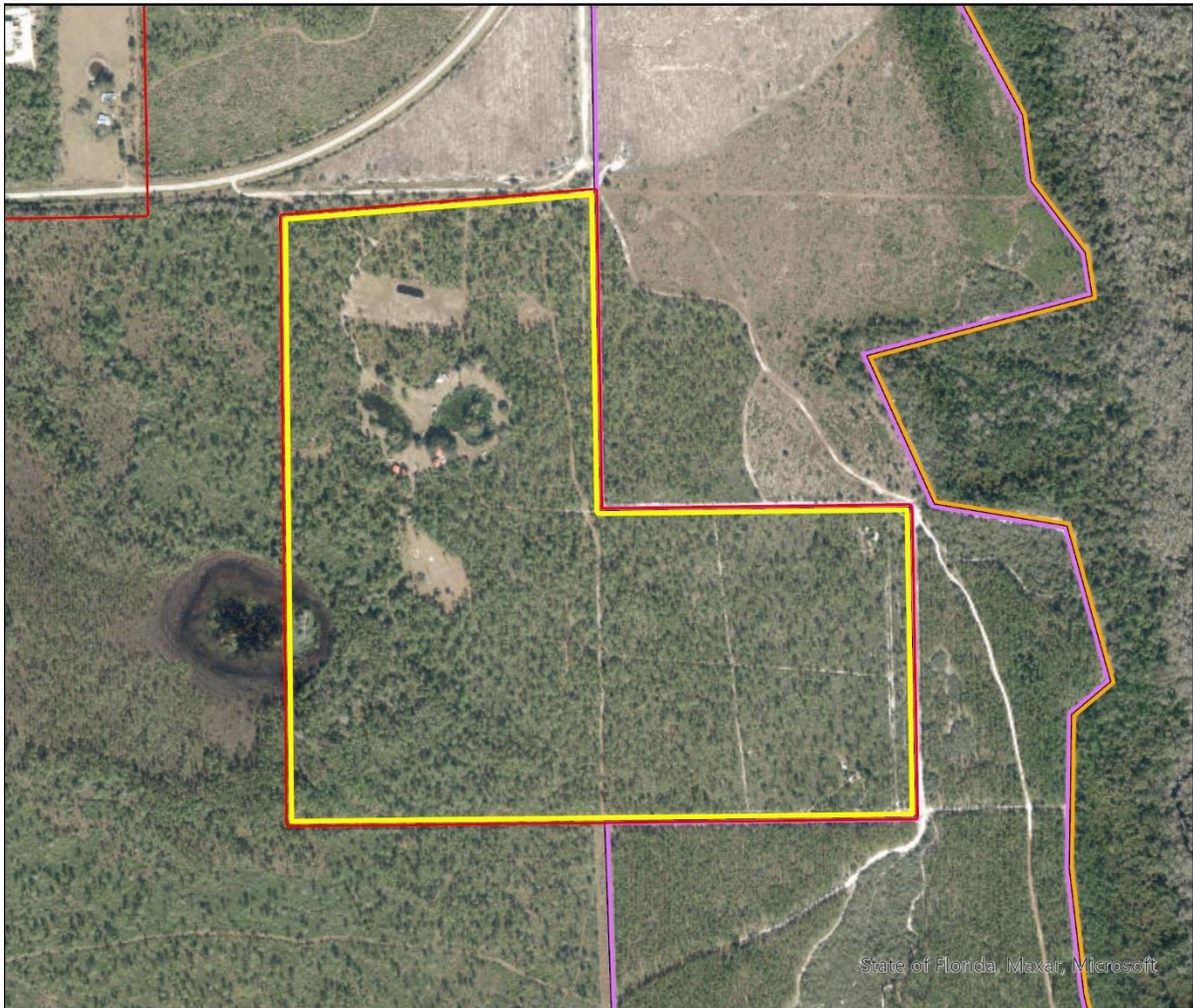
-  Proposed Addition
-  Florida Forever BOT Projects
-  State Owned Lands
-  Other Conservation Lands



JUNE 2022

Strategic Managed Area Lands List Proposed Addition (Fisheating Creek WMA)

FLORIDA FOREVER BOARD OF TRUSTEES PROJECT PROPOSED ADDITION AS OF JULY 2022



Map Produced by: N. Pasco, July 2022

Background: World Imagery Resolution = 0.3 meter



1018 Thomasville Road
Suite 200-C
Tallahassee, Florida 32303
850-224-8207
fax 850-681-9364
www.fnai.org

