

**ITEM 13:**

Vote on whether to amend the Strategic Managed Area Lands List Florida Forever Project Boundary for the FWC to add seven parcels totaling approximately 297 acres in Gadsden County with a tax assessed market value of \$944,940.

**LOCATION:**

Gadsden County

**DSL STAFF REMARKS:**

The Mine Road Property amendment proposed by the Florida Fish and Wildlife Conservation Commission (FWC) adds seven parcels in Gadsden County totaling approximately 297 acres to the Strategic Managed Area Lands List (SMALL) Florida Forever project. The property is owned by Lex Thompson Irrevocable Lifetime Family Trust and Carol Anne Thompson. The seven parcels have a combined tax assessed value of \$944,940. The property is proposed for fee simple acquisition and would be managed by the FWC as part of Joe Budd Wildlife Management Area (JBWMA).

The property primarily consists of recently harvested pine plantation, although there may be some remnant areas of upland pine and upland hardwood forest. A narrow strand of bottomland forest and floodplain swamp associated with Hunter Creek is also present. The property likely provides habitat for imperiled species such as Florida black bear (*Ursus americanus floridanus*). The property is identified as Priority 2 within the Florida Ecological Greenways Network.

According to FWC, adding the Mine Road property to JBWMA would enhance the existing recreational opportunities including hunting, fishing, wildlife viewing, bird watching, nature study, hiking, bicycling, horseback riding, picnicking, and geocaching. Additionally, it would provide recreational opportunities to be used by the Joe Budd Youth Conservation Center which is part of an initiative to reconnect Florida's youth with traditional outdoor activities.

*Boundary Amendment Criteria:*

The proposal meets the criteria to be submitted as a boundary amendment. The parcels total less than 1,000 acres, have a tax assessed value of less than \$2 million, and are less than 10% of the size of the overall project to which they are being added. The proposal area should be designated as essential.

*Project History:*

The SMALL project was approved in October 2018, to enhance or facilitate management of properties under public ownership. The project was sponsored by the Division of Recreation and Parks, the Office of Greenways and Trails, the Florida Forest Service, and the FWC. The parcels included have been identified as part of the optimum management boundary within the approved management plans of the respective managed area. None of these parcels are located within the boundary of another Florida Forever project on the priority list. In August 2021, ARC approved a modification to include the Office of Resilience and Coastal Protection and increase the number of ownerships within the project from 10 to 15 for each agency.

The SMALL project includes 11,844 acres to be acquired with 11,518 acres remaining and is ranked number eight in the Critical Natural Lands category on the 2022 Florida Forever Priority List. The tax assessed value for the remaining acres to be acquired in this project per property

appraiser information (2020) is \$53,15,920.

*FNAI Review:*

According to the Florida Natural Areas Inventory Florida Forever Measures Evaluation the proposed property contributes substantially to Ecological Greenways (100%), Surface Water Protection (100%), Aquifer Recharge (100%), Strategic Habitat Conservation Areas (98%), and Archeological and Historical Sites (71%).

**STAFF RECOMMENDATION:**

Vote on the proposed boundary amendment.

**ARC RECOMMENDATION:**

<b>Project</b>	<b>DHR</b>	<b>FFS</b>	<b>Lynetta Griner</b>	<b>DEP</b>	<b>FWC</b>	<b>Bill Palmer</b>	<b>Elva Peppers</b>	<b>Selected</b>
Strategic Managed Area Lands List: Mine Road Property								



To: Sine Murray, DEP/OES  
 From: Dale Jackson, FNAI  
 Date: October 13, 2022  
 Subject: Proposed Boundary Modification to Florida Forever BOT Project: SMALL – Joe Budd Wildlife Management Area (Mine Road property)

The major goals of the Strategic Managed Areas Lands List (SMALL) Florida Forever Project are to enhance protection of natural resources on existing public lands and to facilitate their management. This amendment proposes to add a single, multi-parcel tract (Mine Road property) of approximately 354 acres to Joe Budd Wildlife Management Area (JBWMA), which lies at the eastern end of Lake Talquin, an impoundment of the Ochlockonee River west of Tallahassee in Gadsden County. The property is proposed for fee-simple acquisition. The southern portion of the contiguous tract is surrounded on three sides by Lake Talquin State Forest (LTSF), although there appear to be minor discrepancies between application and conservation land boundaries. No portion of the proposal is contiguous with JBWMA; however, the two state-owned conservation lands interdigitate and are managed cooperatively between the agencies. Two approved SMALL parcels lie within 1 km to the west and southwest of the proposal; however, they are proposed for addition to LTSF.

Landcover on the tract chiefly has been disturbed by silvicultural operations. Pine plantation and associated forestry roads covered most of the tract in relatively recent aerial photographs, but the most recent shows most plantation trees to have been harvested, with bare soil now exposed. A narrow strand of bottomland forest and floodplain swamp (with some cypress) runs north-south along Hunter Creek just inside of the property's western boundary; an associated small impoundment is situated in the northwestern corner of the tract. Non-silvicultural forested land may include a small area of upland pine and upland hardwood forest.

The FNAI database shows that the proposed tract lies within a region in which the Florida Fish and Wildlife Conservation Commission considers the Florida black bear (*Ursus americanus floridanus*, G4T4/S4, N, N) to be abundant. The property does not contain riverine habitat capable of supporting fishes, mussels, or turtles mentioned in the application.

The Florida Forever Measures Evaluation (FFME) following this memo is based on the Florida Forever Conservation Needs Assessment developed by FNAI. The data used in that analysis represent a standardized, statewide perspective of natural community distributions based primarily on data from the Cooperative Land Cover Map. The proposed addition lies within a landscape that contributes substantially to Surface Water Protection, Aquifer Recharge, and Ecological Greenways, with potential to support Sustainable Forestry.

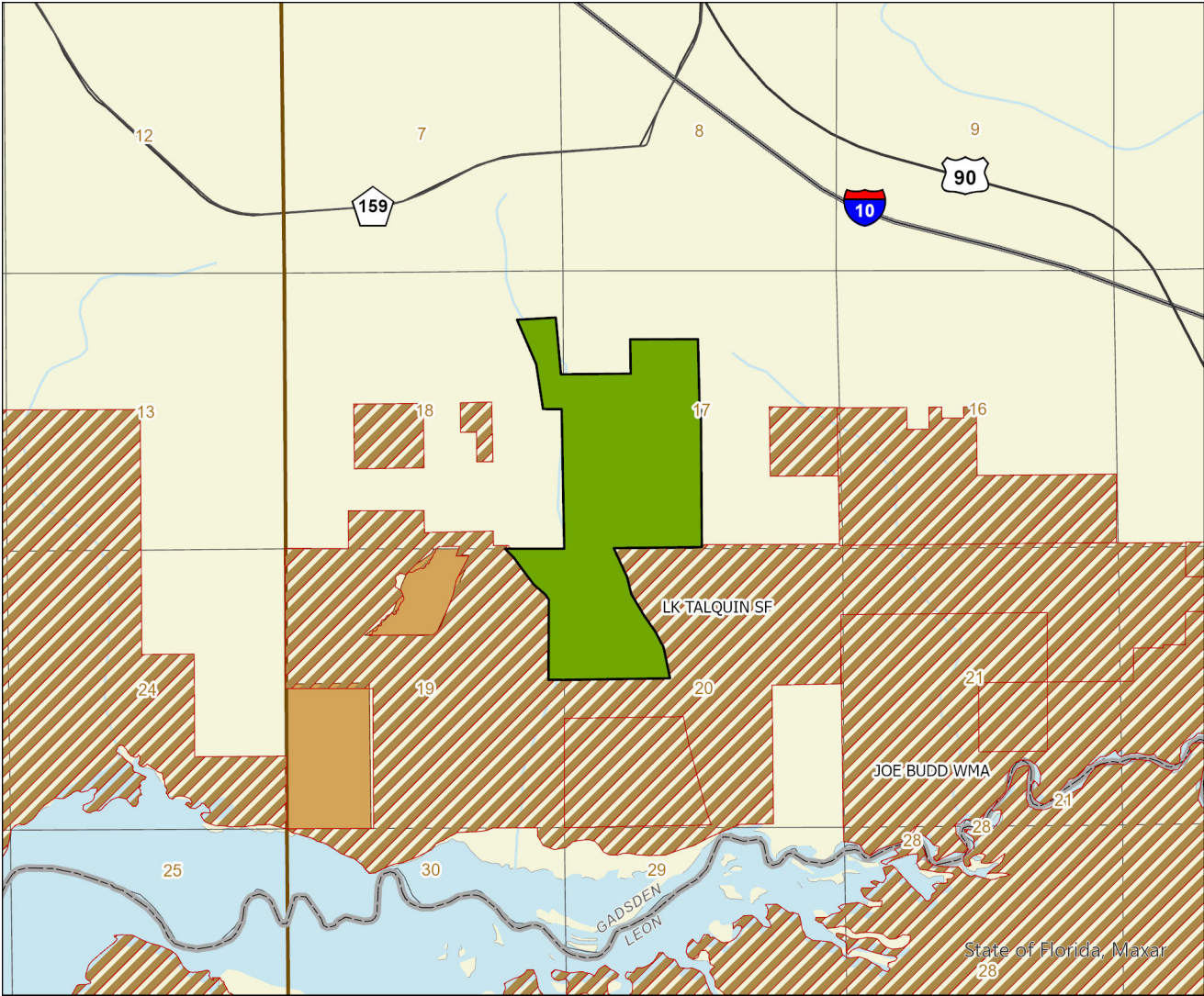
**S.M.A.L.L. (Joe Budd WMA): Florida Forever Measure Evaluation 20221010**

GIS ACRES = 354

MEASURES	Resource Acres <sup>2</sup>	% of project
<b>B1: Strategic Habitat Conservation Areas</b>		
Priority 1	0	0%
Priority 2	2	< 1%
Priority 3	293	83%
Priority 4	1	< 1%
Priority 5	52	15%
<b>Total Acres</b>	<b>347</b>	<b>98%</b>
<b>B2: FNAI Habitat Conservation Priorities</b>		
Priority 1	0	0%
Priority 2	49	14%
Priority 3	31	9%
Priority 4	3	< 1%
Priority 5	0	0%
Priority 6	24	7%
<b>Total Acres</b>	<b>107</b>	<b>30%</b>
<b>B3: Ecological Greenways</b>		
Priority 1	15	4%
Priority 2	338	96%
Priority 3	0	0%
Priority 4	0	0%
Priority 5	0	0%
<b>Total Acres</b>	<b>352</b>	<b>100%</b>
<b>B4: Under-represented Natural Communities</b>		
Upland Glade (G1)	0	0%
Pine Rockland (G1)	0	0%
Scrub and Scrubby Flatwoods (G2)	0	0%
Rockland Hammock (G2)	0	0%
Dry Prairie (G2)	0	0%
Seepage Slope (G2)	0	0%
Sandhill (G3)	0	0%
Sandhill Upland Lake (G3)	0	0%
Upland Pine (G3)	9	2%
Mesic/Wet Flatwoods (G4)	0	0%
Upland Hardwood Forest (G5)	8	2%
<b>Total Acres</b>	<b>17</b>	<b>4%</b>
<b>B6: Occurrences of FNAI Tracked Species</b>		
G1	0	
G2	0	
G3	0	
G4	1	
G5	0	
<b>Total</b>	<b>1</b>	
<b>C4: Natural Floodplain Function</b>		
Priority 1	0	0%
Priority 2	31	9%
Priority 3	15	4%
Priority 4	3	< 1%
Priority 5	0	0%
Priority 6	0	0%
<b>Total Acres</b>	<b>48</b>	<b>14%</b>

MEASURES (continued)	Resource Acres <sup>2</sup>	% of project
<b>C5: Surface Water Protection</b>		
Priority 1	0	0%
Priority 2	295	83%
Priority 3	0	0%
Priority 4	57	16%
Priority 5	0	0%
Priority 6	0	0%
Priority 7	0	0%
<b>Total Acres</b>	<b>352</b>	<b>100%</b>
<b>C7: Fragile Coastal Resources</b>		
Fragile Coastal Uplands	0	0%
Imperiled Coastal Lakes	0	0%
Coastal Wetlands	0	0%
<b>Total Acres</b>	<b>0</b>	<b>0%</b>
<b>C8: Functional Wetlands</b>		
Priority 1	0	0%
Priority 2	28	8%
Priority 3	10	3%
Priority 4	0	< 1%
Priority 5	0	0%
Priority 6	0	0%
<b>Total Acres</b>	<b>38</b>	<b>11%</b>
<b>D3: Aquifer Recharge</b>		
Priority 1	0	0%
Priority 2	0	0%
Priority 3	0	0%
Priority 4	30	9%
Priority 5	323	91%
Priority 6	0	0%
<b>Total Acres</b>	<b>354</b>	<b>100%</b>
<b>E2: Recreational Trails (miles)</b>		
<small>(prioritized trail opportunities from Office of Greenways and Trails &amp; Univ. Florida)</small>		
Land Trail Priorities	0.0	
Land Trail Opportunities	0.0	
<b>Total Miles</b>	<b>0.0</b>	
<b>F2: Arch. &amp; Historical Sites (number)</b>		
	0	sites
<b>G1: Sustainable Forestry</b>		
Priority 1	0	0%
Priority 2	0	0%
Priority 3	242	68%
Priority 4	0	0%
Priority 5 - Potential Pinelands	9	2%
<b>Total Acres</b>	<b>251</b>	<b>71%</b>
<b>G3: Forestland for Recharge</b>		
	0	0%

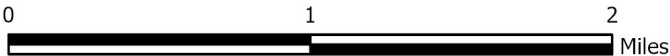
\*Acres of each resource in the project and percentage of project represented by each resource are listed except where noted. This analysis converts site boundary into pixels, which causes slight differences from GIS acres; this effect is most noticeable on small sites.



**STRATEGIC MANAGED AREA LANDS LIST  
PROPOSED ADDITION (JOE BUDD WMA)**

**GADSDEN COUNTY**

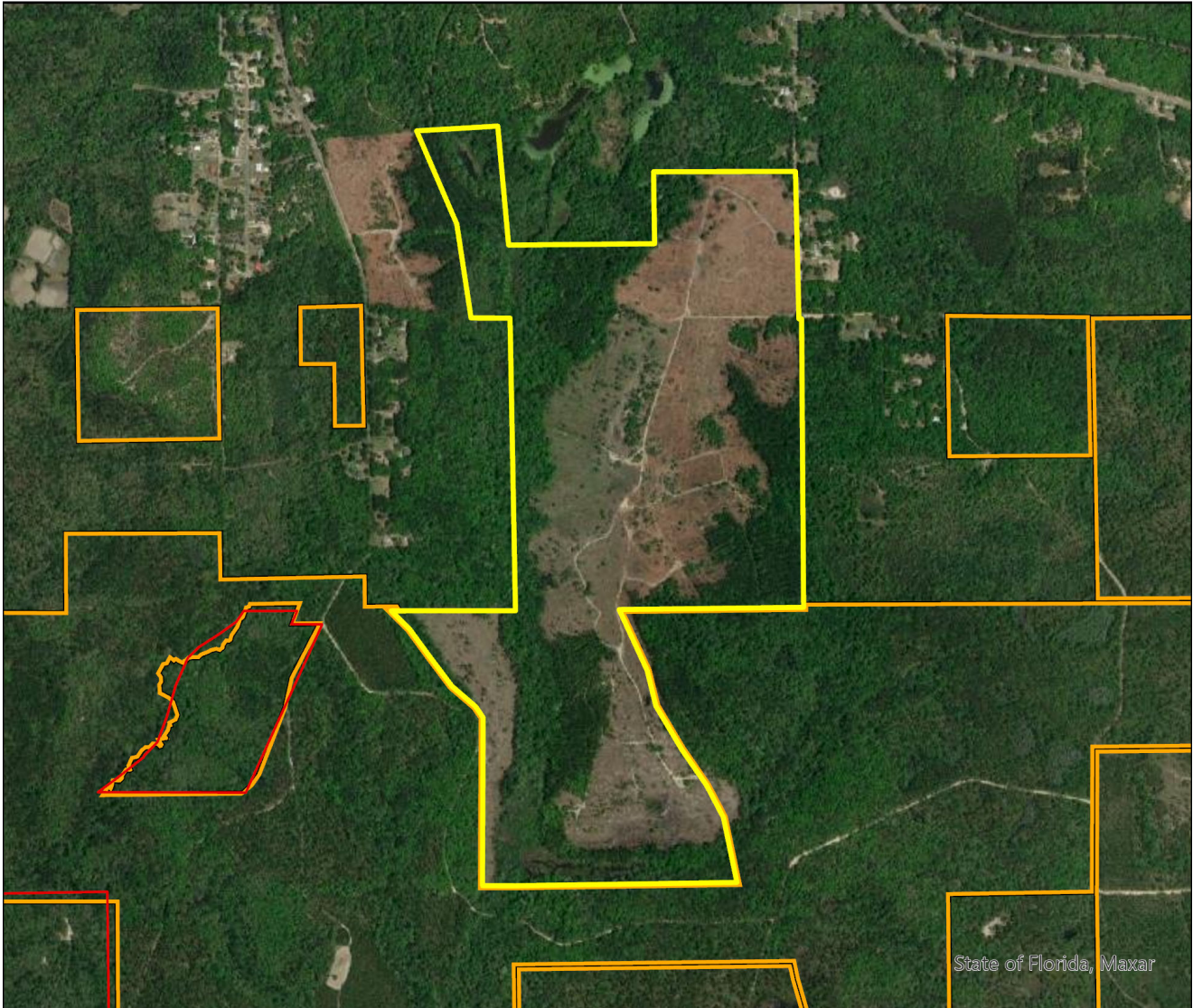
- Proposed Addition
- Florida Forever BOT Projects
- State Owned Lands
- Other Conservation Lands



MAP BY FL NATURAL AREAS INVENTORY NOVEMBER 2022

## Strategic Managed Area Lands List Proposed Addition (Joe Budd WMA)

FLORIDA FOREVER BOARD OF TRUSTEES PROJECT PROPOSED ADDITION AS OF OCTOBER 2022



Map Produced by: FL Natural Areas Inventory, N. Pasco, November 2022

Background: ESRI World Imagery Resolution = 0.3 meter



-  Florida Forever Proposed Addition
-  Florida Forever BOT Projects
-  Existing State Conservation Lands

