

ITEM 14:

Consider request to remove approximately 2.53 acres from the boundary of the Bombing Range Ridge Florida Forever Project.

LOCATION:

Polk County

DSL STAFF REMARKS:

Michael J. Gatlin and Andrew M. Green purchased two lots totaling 2.53 acres in Polk County on January 26, 2016. The land is within the boundary of the Bombing Range Ridge Florida Forever project. The owners submitted a certified letter to DEP requesting removal of their property from the project. The parcels contain a structure on the eastern half while the remainder of the property is mostly intact mesic flatwoods and scrubby flatwoods underrepresented natural communities. The parcels represent a priority 1 for the Florida Forever measures for ecological greenways and sustainable forestry.

The Bombing Range Ridge project was sponsored by the Florida Natural Areas Inventory (FNAI) and the Florida Fish and Wildlife Conservation Commission (FWC) when the Land Acquisition and Management Advisory Council added Bombing Range Ridge to the Conservation and Recreation Lands priority list in 1998. The project currently includes 46,221 acres of which 28,480 remain to be acquired. FWC and the Department of Agriculture and Consumer Services' Florida Forest Service (FFS) manage the project except for 540 acres adjacent to Rosalie Creek that is managed by the DEP's Division of Recreation and Parks (DRP) as part of Lake Kissimmee State Park. The South Florida Water Management District, The Nature Conservancy, United States Air Force, and Polk County have acquired and manage lands that are within or adjacent to the project boundary.

Pursuant to Rule 18-24.005(5)(a) and 18-24.007(2), F.A.C., ARC shall delete property from a Florida Forever project boundary if a landowner requests to do so by a certified letter. ARC may recommend that the Board of Trustees of the Internal Improvement Trust Fund (BOT) add such property back into the project boundary, if appropriate. Pursuant to Section 259.105(7)(b)2, Florida Statutes, the BOT has the option of adding this property back into the project boundary if the BOT determines that the property is critical to achieve the purposes of the project.

DSL STAFF RECOMMENDATION:

Vote to approve the owner-requested deletion.

ARC RECOMMENDATION:

() ACCEPT OWNER-REQUESTED DELETION

() ACCEPT OWNER-REQUESTED DELETION AND RECOMMEND THAT THE BOARD OF TRUSTEES ADD OWNER-REQUESTED DELETION BACK INTO THE PROJECT BOUNDARY

Project	DHR	FFS	Lynetta Griner	FWC	Bill Palmer	Elva Peppers	DEP	Selected
Bombing Range Ridge								



1018 Thomasville Road
Suite 200-C
Tallahassee, FL 32303
850-224-8207
fax 850-681-9364
www.fnai.org

To: Shauna Allen, DEP/ Office of Environmental Services
From: Katy NeSmith, FNAI
Date: February 10, 2020
Subject: Proposed boundary modification (removal) to Bombing Range Ridge
Florida Forever BOT Project – Gatlin and Green property

The Goal of the Bombing Range Ridge Florida Forever Project is to conserve and protect significant and dwindling habitat for native species and endangered and threatened species. Public acquisition would also greatly enhance natural-resource based recreation, including adding to the Florida National Scenic Trail system.

The proposed removal is 2.53 acres of which approximately 1 acre has been cleared and a house built, in the eastern half. The rest of the property is mostly intact mesic flatwoods (ca. 38%) and a smaller amount of scrubby flatwoods (ca. 23%). The Florida Forever Measure Evaluation is based on landcover prior to the recent clearing and does not reflect this change.



Florida Resources
and Environmental
Analysis Center

Institute of Science
and Public Affairs

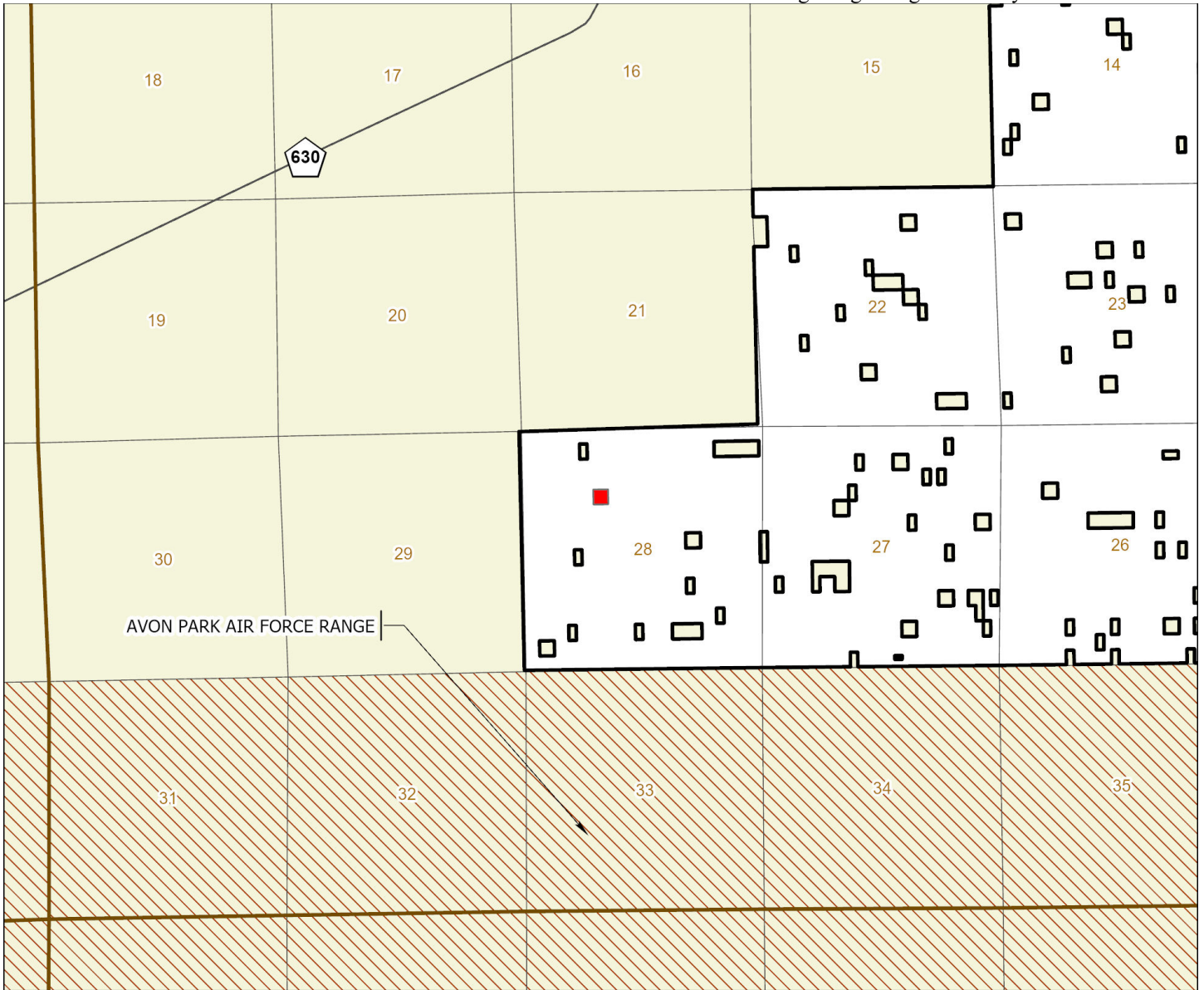
Bombing Range Ridge Deletion (Gatlin/Green): Florida Forever Measure Evaluation 20200206

GIS ACRES = 2.53

MEASURES	Resource Acres ^a	% of project
B1: Strategic Habitat Conservation Areas		
Priority 1	0.00	0%
Priority 2	2.34	100%
Priority 3	0.00	0%
Priority 4	0.00	0%
Priority 5	0.00	0%
Total Acres	2.34	100%
B2: FNAI Habitat Conservation Priorities		
Priority 1	0.00	0%
Priority 2	1.22	52%
Priority 3	1.11	48%
Priority 4	0.00	0%
Priority 5	0.00	0%
Priority 6	0.00	0%
Total Acres	2.34	100%
B3: Ecological Greenways		
Priority 1	2.34	100%
Priority 2	0.00	0%
Priority 3	0.00	0%
Priority 4	0.00	0%
Priority 5	0.00	0%
Priority 6	0.00	0%
Total Acres	2.34	100%
B4: Under-represented Natural Communities		
Upland Glade (G1)	0.00	0%
Pine Rockland (G1)	0.00	0%
Scrub and Scrubby Flatwoods (G2)	1.39	60%
Rockland Hammock (G2)	0.00	0%
Dry Prairie (G2)	0.00	0%
Seepage Slope (G2)	0.00	0%
Sandhill (G3)	0.00	0%
Sandhill Upland Lake (G3)	0.00	0%
Upland Pine (G3)	0.00	0%
Mesic/Wet Flatwoods (G4)	0.95	40%
Upland Hardwood Forest (G5)	0.00	0%
Total Acres	2.34	100%
B6: Occurrences of FNAI Tracked Species		
G1	0	
G2	0	
G3	0	
G4	0	
G5	0	
Total	0	
C4: Natural Floodplain Function		
Priority 1	0.00	0%
Priority 2	0.89	38%
Priority 3	0.00	0%
Priority 4	0.00	0%
Priority 5	0.00	0%
Priority 6	0.00	0%
Total Acres	0.89	38%




MEASURES (continued)	Resource Acres ^a	% of project
C5: Surface Water Protection		
Priority 1	0.00	0%
Priority 2	0.00	0%
Priority 3	0.00	0%
Priority 4	0.00	0%
Priority 5	0.00	0%
Priority 6	2.34	100%
Priority 7	0.00	0%
Total Acres	2.34	100%
C7: Fragile Coastal Resources		
Fragile Coastal Uplands	0.00	0%
Imperiled Coastal Lakes	0.00	0%
Coastal Wetlands	0.00	0%
Total Acres	0.00	0%
C8: Functional Wetlands		
Priority 1	0.00	0%
Priority 2	0.00	0%
Priority 3	0.00	0%
Priority 4	0.00	0%
Priority 5	0.00	0%
Priority 6	0.00	0%
Total Acres	0.00	0%
D3: Aquifer Recharge		
Priority 1	0.00	0%
Priority 2	0.00	0%
Priority 3	0.00	0%
Priority 4	0.00	0%
Priority 5	2.34	100%
Priority 6	0.00	0%
Total Acres	2.34	100%
E2: Recreational Trails (miles)		
<small>(prioritized trail opportunities from Office of Greenways and Trails & Univ. Florida)</small>		
Land Trail Priorities	0.0	
Land Trail Opportunities	0.0	
Total Miles	0.0	
F2: Arch. & Historical Sites (number)		
	0 sites	
G1: Sustainable Forestry		
Priority 1	2.34	100%
Priority 2	0.00	0%
Priority 3	0.00	0%
Priority 4	0.00	0%
Priority 5 - Potential Pinelands	0.00	0%
Total Acres	2.34	100%
G3: Forestland for Recharge		
	0.00	0%

^aAcres of each resource in the project and percentage of project represented by each resource are listed except where noted. This analysis converts site boundary into pixels, which causes slight differences from GIS acres; this effect is greatest on small sites.



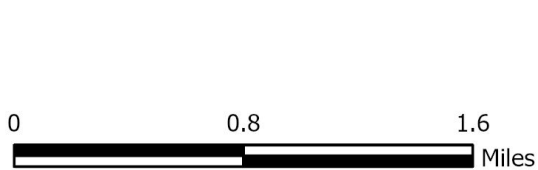
BOMBING RANGE RIDGE PROPOSED DELETION (GATLIN/GREEN PARCELS)

POLK COUNTY

-  Florida Forever BOT Project Boundary
-  Project Property to be Removed
-  Other Conservation Lands



FEBRUARY 2020



Bombing Range Ridge Proposed Deletion

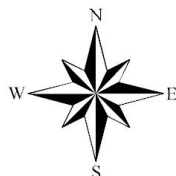
FLORIDA FOREVER BOARD OF TRUSTEES PROJECT PROPOSAL BOUNDARY AS OF FEBRUARY 2020



Source: Esri, DigitalGlobe, GeoEye, Earthstar Geographics, CNES/Airbus DS, USDA, USGS, AeroGRID, IGN, and the GIS User Community

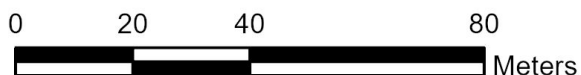
Map Produced by: N. Pasco, February 2020

Background: World Imagery Resolution = 0.3 meter



	Florida Forever Proposal Boundary
	Florida Forever BOT Projects

1018 Thomasville Road
Suite 200-C
Tallahassee, Florida 32303
850-224-8207
fax 850-681-9364
www.fnai.org



Parcels to be deleted from the boundary: Polk County Property Appraiser

Parcel Id	Acres	Tax Value	Market Value
30-31-28-000000-032110	1.26	\$632.00	\$632.00
30-31-28-000000-032240	1.26	\$632.00	\$632.00
Totals	2.52	\$1,264.00	\$1,264.00