

**ITEM 14:**

Vote on whether to amend the Pinhook Swamp Florida Forever Project Boundary to add three parcels totaling approximately 950.5 acres in Columbia County with a tax assessed market value of \$889,668.

**LOCATION:**

Columbia County

**DSL STAFF REMARKS:**

The Greene Addition amendment, proposed by Alachua Conservation Trust, adds three parcels to the Pinhook Swamp Florida Forever project. The parcels, owned by Audrey Ann Greene, Mary Ann Greene and Ralph Greene, total approximately 950.5 acres, and have a tax assessed value of \$889,668. The landowners have been contacted and are willing sellers. The properties are to be acquired less-than-fee. The property is in northwestern Columbia County, east of the Suwannee River and consists of a large swath of forested wetlands and pine plantation. The property is within Priority 2 of the Florida Ecological Greenways Network and may provide habitat for imperiled wildlife species such as the gopher tortoise (*Gopherus polyphemus*).

*Boundary Amendment Criteria:*

The proposal meets the criteria to be submitted as a boundary amendment. The parcels total less than 1,000 acres, have a tax assessed value of less than \$2 million, and are less than 10% of the size of the overall project to which it is being added. The proposal area should be designated as essential.

*Project History:*

The Pinhook Swamp project, located in Columbia County, was added to the Florida Forever Priority List in 1992. The project aims to protect and restore the pine flatwoods and swamps linking the Osceola National Forest, Okefenokee National Wildlife Refuge, and Suwannee River.

The Pinhook Swamp project includes approximately 183,954 acres and is ranked number 23 in the Critical Natural Lands category on the 2022 Florida Forever Priority List. The tax assessed value for the remaining acres to be acquired in this project per property appraiser information (2020) is \$66,095,122.

*FNAI Review:*

According to the FNAI Florida Forever Measures Evaluation, the proposed addition contributes significantly to Ecological Greenways (100%), Aquifer Recharge (100%), Surface Water Protection (98%), Strategic Habitat Conservation Areas (93%), Natural Floodplain Function (89%), and Functional Wetlands (53%).

**STAFF RECOMMENDATION:**

Vote on the proposed boundary amendment.

**ARC RECOMMENDATION:**

<b>Project</b>	<b>DHR</b>	<b>FFS</b>	<b>Lynetta Griner</b>	<b>FWC</b>	<b>Bill Palmer</b>	<b>Elva Peppers</b>	<b>DEP</b>	<b>Selected</b>
Pinhook Swamp: Greene Addition								



To: Sine Murray, DEP/OES  
 From: Dan Hipes, FNAI  
 Date: August 24, 2022  
 Subject: Proposed Boundary Modification to the Pinhook Swamp Florida Forever BOT  
 Project: Greene Addition Tract

The major goals of the Pinhook Swamp Florida Forever (FF) Project are to protect and restore a natural area of pine flatwoods and swamps linking the Osceola National Forest, the Okefenokee National Wildlife Refuge, and the Suwannee River. The Greene Addition Tract (AKA Greene East) is a proposed less-than-fee addition to the project of approximately 950 acres in Columbia County. The tract lies immediately west of US 441, which in that area is the western boundary of the existing project. The Griffin Conservation Easement, which was purchased as part of the Pinhook Swamp Florida Forever BOT Project, lies just to the east and shares approximately 1/3 miles of boundary (separated by 441). The Suwannee River lies within ¾ mile to the west. The proposal states that a conservation easement on an additional 480 acres (also owned by the Greene Family) west of the proposed Greene Addition is being purchased by NRCS, further increasing the property's conservation value.

Approximately half of the Greene Addition Tract is forested wetland including baygall, basin swamp, and wet flatwoods. Most of that wetland is included in a large wetland system that bisects the property, extending north and south of the property and eventually draining to the Suwannee River. Most of the wetlands appear to be undisturbed; the exception is approximately 20 acres of cypress that was harvested between 1999 and 2004 toward the southern end of the large wetland system. Most of the upland half is in some stage of pine plantation; bedding is evident in all recent plantings on aerial photography. Wildlife food plots and a minimal network of unpaved roads make up a small percentage of the property. No development is reported or apparent on aerial photography.

The Greene Addition Tract is within an area where Florida black bear (*Ursus americanus floridanus*, G5T4/S4, N, N) is considered "frequent" by the Florida Fish and Wildlife Conservation Commission. The FNAI database contains no other records of rare species on site or nearby other than those associated with the Suwannee River nearby to the west.

The Florida Forever Measures Evaluation (FFME) following this memo is based on the Florida Forever Conservation Needs Assessment developed by FNAI. The data used in that analysis represent a standardized, statewide perspective of natural community distributions based primarily on data from the Cooperative Land Cover Map. All or nearly all of the proposed addition contributes to priorities 3 and 5 Strategic Habitat Conservation Areas; priority 2 Ecological Greenways; priorities 4, 5, and 6 Surface Water Protection; priorities 4 and 5 Aquifer Recharge; and priorities 2 and 3 Natural Floodplain Function. A little more than half of the site contributes to Sustainable Forestry. Less than 10% of the site contributes to FNAI Habitat Conservation Priorities and Under-represented Natural Communities (mesic/wet flatwoods).

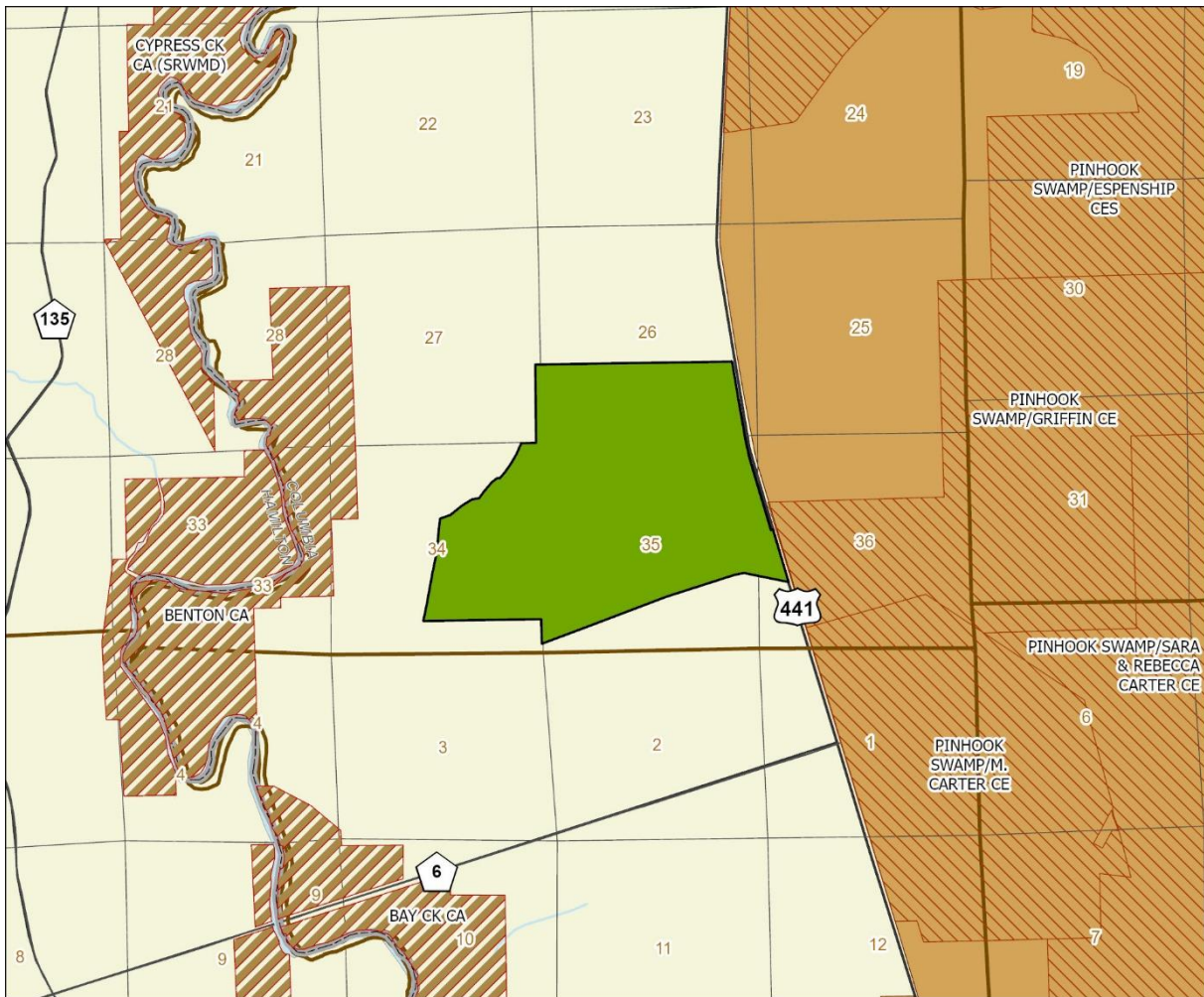
**Pinhook Swamp (Greene): Florida Forever Measure Evaluation 20220818**

GIS ACRES = 951

MEASURES	Resource Acres <sup>2</sup>	% of project
<b>B1: Strategic Habitat Conservation Areas</b>		
Priority 1	0	0%
Priority 2	0	0%
Priority 3	785	82%
Priority 4	0	0%
Priority 5	101	11%
<b>Total Acres</b>	<b>885</b>	<b>93%</b>
<b>B2: FNAI Habitat Conservation Priorities</b>		
Priority 1	0	0%
Priority 2	0	0%
Priority 3	0	0%
Priority 4	0	0%
Priority 5	4	< 1%
Priority 6	87	9%
<b>Total Acres</b>	<b>90</b>	<b>9%</b>
<b>B3: Ecological Greenways</b>		
Priority 1	0	0%
Priority 2	952	100%
Priority 3	0	0%
Priority 4	0	0%
Priority 5	0	0%
<b>Total Acres</b>	<b>952</b>	<b>100%</b>
<b>B4: Under-represented Natural Communities</b>		
Upland Glade (G1)	0	0%
Pine Rockland (G1)	0	0%
Scrub and Scrubby Flatwoods (G2)	0	0%
Rockland Hammock (G2)	0	0%
Dry Prairie (G2)	0	0%
Seepage Slope (G2)	0	0%
Sandhill (G3)	0	0%
Sandhill Upland Lake (G3)	0	0%
Upland Pine (G3)	0	0%
Mesic/Wet Flatwoods (G4)	87	9%
Upland Hardwood Forest (G5)	0	0%
<b>Total Acres</b>	<b>87</b>	<b>9%</b>
<b>B6: Occurrences of FNAI Tracked Species</b>		
G1	0	
G2	0	
G3	0	
G4	1	
G5	0	
<b>Total</b>	<b>1</b>	
<b>C4: Natural Floodplain Function</b>		
Priority 1	4	< 1%
Priority 2	300	32%
Priority 3	231	24%
Priority 4	315	33%
Priority 5	0	0%
Priority 6	0	0%
<b>Total Acres</b>	<b>850</b>	<b>89%</b>

MEASURES (continued)	Resource Acres <sup>2</sup>	% of project
<b>C5: Surface Water Protection</b>		
Priority 1	0	0%
Priority 2	0	0%
Priority 3	0	0%
Priority 4	123	13%
Priority 5	206	22%
Priority 6	602	63%
Priority 7	0	0%
<b>Total Acres</b>	<b>931</b>	<b>98%</b>
<b>C7: Fragile Coastal Resources</b>		
Fragile Coastal Uplands	0	0%
Imperiled Coastal Lakes	0	0%
Coastal Wetlands	0	0%
<b>Total Acres</b>	<b>0</b>	<b>0%</b>
<b>C8: Functional Wetlands</b>		
Priority 1	4	< 1%
Priority 2	274	29%
Priority 3	185	19%
Priority 4	42	4%
Priority 5	0	0%
Priority 6	0	0%
<b>Total Acres</b>	<b>505</b>	<b>53%</b>
<b>D3: Aquifer Recharge</b>		
Priority 1	0	0%
Priority 2	0	0%
Priority 3	0	0%
Priority 4	464	49%
Priority 5	488	51%
Priority 6	0	0%
<b>Total Acres</b>	<b>952</b>	<b>100%</b>
<b>E2: Recreational Trails (miles)</b>		
<small>(prioritized trail opportunities from Office of Greenways and Trails &amp; Univ. Florida)</small>		
Land Trail Priorities	0.0	
Land Trail Opportunities	0.0	
<b>Total Miles</b>	<b>0.0</b>	
<b>F2: Arch. &amp; Historical Sites (number)</b>		
	0 sites	
<b>G1: Sustainable Forestry</b>		
Priority 1	231	24%
Priority 2	98	10%
Priority 3	200	21%
Priority 4	0	0%
Priority 5 - Potential Pinelands	4	< 1%
<b>Total Acres</b>	<b>532</b>	<b>56%</b>
<b>G3: Forestland for Recharge</b>		
	0	0%

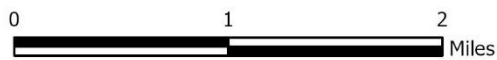
\*Acres of each resource in the project and percentage of project represented by each resource are listed except where noted. This analysis converts site boundary into pixels, which causes slight differences from GIS acres; this effect is most noticeable on small sites.



**PINHOOK SWAMP PROPOSED ADDITION (GREENE)**

**COLUMBIA COUNTY**

- Proposed Addition
- Florida Forever BOT Projects
- State Owned Lands
- Other Conservation Lands

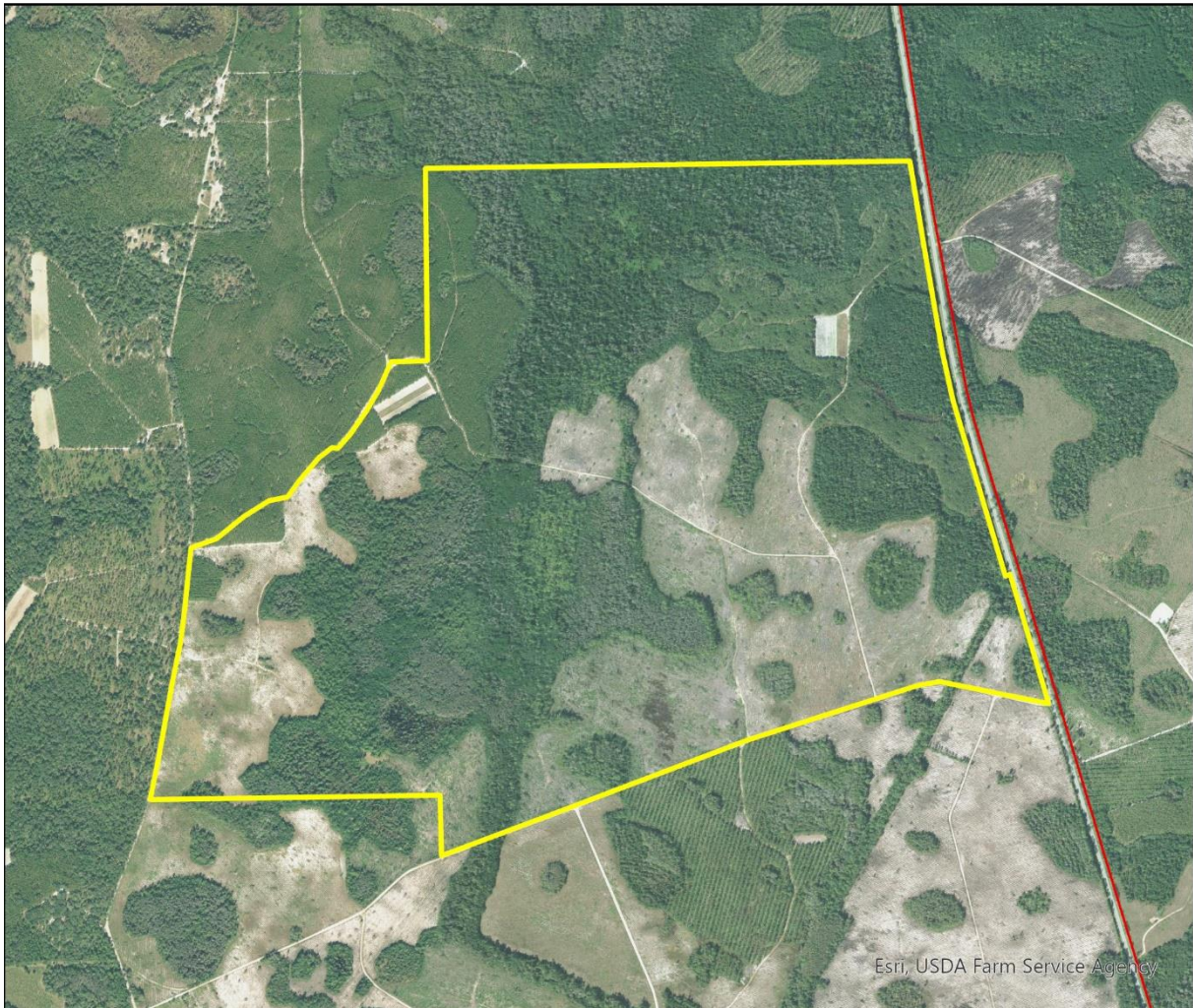


AUGUST 2022



# Pinhook Swamp Proposed Addition

FLORIDA FOREVER BOARD OF TRUSTEES PROJECT PROPOSED ADDITION AS OF AUGUST 2022



Map Produced by: N. Pasco, August 2022

Background: USA NAIP Imagery Resolution = 1.0 meter



1018 Thomasville Road  
Suite 200-C  
Tallahassee, Florida 32303  
850-224-8207  
fax 850-681-9364  
www.fnai.org

