

ITEM 15:

Vote on whether to amend the Bombing Range Ridge Florida Forever Project Boundary to add five parcels totaling approximately 995.0 acres in Polk County with a tax assessed market value of \$531,207.

LOCATION:

Polk County

DSL STAFF REMARKS:

The Lost Oak amendment proposed by Rick Hartman with Hartman Real Estate, adds five parcels in Polk County totaling approximately 995.0 acres to the Bombing Range Ridge Florida Forever project. The parcels are co-owned by Pomcor Longview LLC, Indian Prairie Groves LLC, J.F. Ranch LLC, and Pomcor II LLC. Approximately 200 acres of the proposed boundary amendment are protected under a conservation easement held by the South Florida Water Management District. The proposal has a combined tax assessed value of \$531,207.

The five parcels are within the Bombing Range Ridge Florida Forever boundary and are proposed for fee simple acquisition. All landowners have been contacted and are willing sellers. The Florida Forest Service has confirmed the parcels would be managed as part of Bombing Range Ridge. The property would provide additional protection to the conservation area and allow expanded recreational opportunities.

The proposal meets the criteria to be submitted as a boundary amendment. The parcels total less than 1,000 acres, have a tax assessed value of less than \$2 million, and are less than 10% of the size of the overall project to which it is being added. The proposal area should be designated as essential. The proposal adds most of the lands owned by the property owners that are not already included in the Bombing Range Ridge Florida Forever site (867 acres). The project will remain in the Critical Natural Lands category with the proposed addition.

Project History:

Public acquisition of this project would conserve and protect significant habitat for native species and endangered and threatened species. The Bombing Range Ridge project was added to the Land Acquisition and Management Advisory Council's 1997 Conservation and Recreation Lands Priority list at their December meeting. This fee simple acquisition consisted of approximately 39,073 acres, multiple owners, and a 1997 taxable value of \$15,238,510.

On November 30, 2018, The Department of Agriculture and Consumer Services (DACCS) closed on a 4,468.16-acre Easement owned by the Goolsby Ranch. The tax assessed value for the remaining acres to be acquired in this project per property appraiser information (2018) is \$30,062,405.

FNAI Review:

According to the Florida Natural Areas Inventory (FNAI), nearly the entire proposal contributes to FNAI Habitat Conservation Priorities, Ecological Greenways, Aquifer Recharge and Surface Water Protection.

STAFF RECOMMENDATION:

Vote on the proposed boundary amendment.

ARC RECOMMENDATION:

Project	DHR	FFS	Lynetta Griner	FWC	Bill Palmer	Elva Peppers	DEP	Selected
Bombing Range Ridge: Lost Oak								



1018 Thomasville Road
Suite 200-C
Tallahassee, FL 32303
850-224-8207
www.fnai.org

To: Deborah Burr, DEP/ Office of Environmental Services
From: Katy NeSmith, FNAI
Date: May 22, 2020
Subject: Proposed boundary modification (addition) to Bombing Range Ridge Florida Forever BOT Project – Lost Oak property

The Goal of the Bombing Range Ridge Florida Forever Project is to conserve and protect significant and dwindling habitat for native species characteristic of Florida's heartland. A secondary goal is to enhance natural-resource based recreation, including adding to the Florida National Scenic Trail system. The Lost Oak property proposed for addition is situated near the southwestern shore of Lake Kissimmee and is bordered by the Kissimmee Chain of Lakes (South Florida Water Management District [SFWMD]; which protects the Lake's shoreline), and the Bombing Range Ridge (BRR) Florida Forever BOT project.

The proposed addition is 1092 acres including approximately 300 acres that is currently under a conservation easement held by SFWMD. The Lost Oak property is in two disjunct pieces: an approximately 911-acre tract, and a smaller 181-acre tract to the north. Both parcels border the Kissimmee Chain of Lakes on the lake side. An eastern arm of the BRR Florida Forever BOT project fills the gap between the two parcels. They are the puzzle pieces that complete a substantial connection between the BOT project and the lake.

The northern piece of Lost Oak is approximately two thirds natural, with the remainder in improved pasture. Natural areas appear to be undisturbed and include depression marsh, mesic hammock, mesic flatwoods, and scrub/scrubby flatwoods. The pasture and marsh in the northern tract make up most of the area currently under easement with SFWMD.

Sixty-three percent (ca. 575 acres) of the southern parcel is in improved pasture, approximately 115 acres of which is on the SFWMD easement portion. Mesic hammock/woodland pasture, depression marshes, and mesic flatwoods make up most of the remaining acreage. Large live oaks are dominant in the hammocks and woodland pasture. There are also a few sheds/barn in a small area on the southern piece.

FNAI has one record of a bald eagle nest on the northern parcel, last known to be active in 2013. Surveys conducted in 2007 yielded additional species according to the applicant: American alligator, southeastern fox squirrel, Florida sandhill crane, little blue heron, and gopher tortoise. Also found was Florida scrub-jay, which could possibly still be present given the extent of scrub/scrubby flatwoods on and in the vicinity of the proposed addition.

As summarized in the accompanying Florida Forever Measures Evaluation (FFME), nearly the entire proposed addition contributes to FNAI Habitat Conservation Priorities, Ecological Greenways, Surface Water Protection, and Aquifer Recharge.

Tracking Florida's Biodiversity

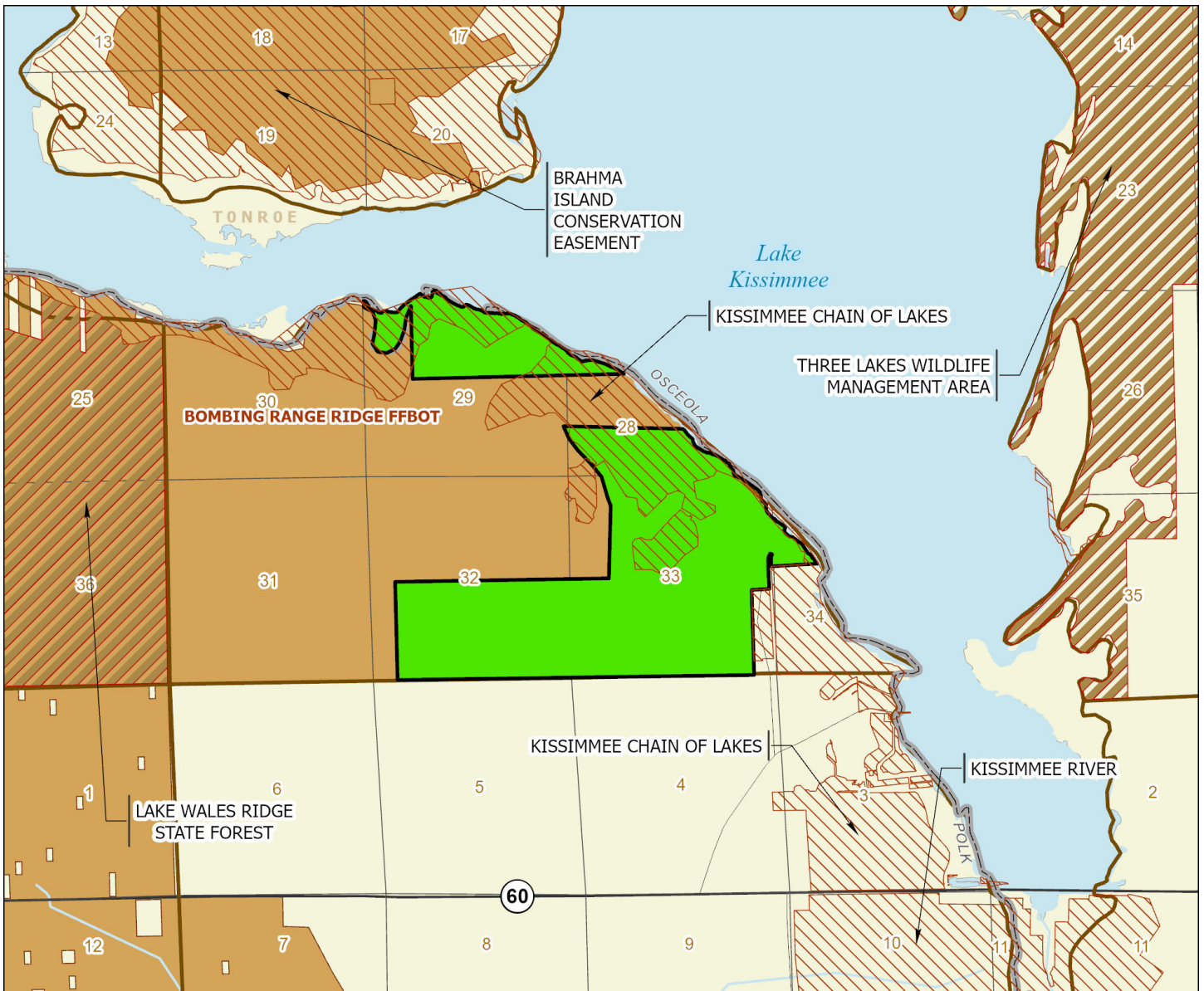
Bombing Range Ridge Addition (Lost Oak): Florida Forever Measure Evaluation 20200526

GIS ACRES = 993

MEASURES	Resource Acres ^a	% of project
B1: Strategic Habitat Conservation Areas		
Priority 1	0	0%
Priority 2	139	14%
Priority 3	33	3%
Priority 4	22	2%
Priority 5	3	< 1%
Total Acres	197	20%
B2: FNAI Habitat Conservation Priorities		
Priority 1	0	0%
Priority 2	24	2%
Priority 3	188	19%
Priority 4	676	68%
Priority 5	35	3%
Priority 6	65	7%
Total Acres	988	100%
B3: Ecological Greenways		
Priority 1	537	54%
Priority 2	4	< 1%
Priority 3	0	0%
Priority 4	0	0%
Priority 5	445	45%
Priority 6	0	0%
Total Acres	986	99%
B4: Under-represented Natural Communities		
Upland Glade (G1)	0	0%
Pine Rockland (G1)	0	0%
Scrub and Scrubby Flatwoods (G2)	8	< 1%
Rockland Hammock (G2)	0	0%
Dry Prairie (G2)	2	< 1%
Seepage Slope (G2)	0	0%
Sandhill (G3)	0	0%
Sandhill Upland Lake (G3)	0	0%
Upland Pine (G3)	0	0%
Mesic/Wet Flatwoods (G4)	25	1%
Upland Hardwood Forest (G5)	0	0%
Total Acres	34	2%
B6: Occurrences of FNAI Tracked Species		
G1	0	
G2	1	
G3	0	
G4	0	
G5	1	
Total	2	
C4: Natural Floodplain Function		
Priority 1	0	0%
Priority 2	26	3%
Priority 3	230	23%
Priority 4	226	23%
Priority 5	26	3%
Priority 6	0	0%
Total Acres	508	51%

MEASURES (continued)	Resource Acres ^a	% of project
C5: Surface Water Protection		
Priority 1	0	0%
Priority 2	421	42%
Priority 3	0	0%
Priority 4	535	54%
Priority 5	0	0%
Priority 6	0	0%
Priority 7	0	0%
Total Acres	957	96%
C7: Fragile Coastal Resources		
Fragile Coastal Uplands	0	0%
Imperiled Coastal Lakes	0	0%
Coastal Wetlands	0	0%
Total Acres	0	0%
C8: Functional Wetlands		
Priority 1	0	0%
Priority 2	2	< 1%
Priority 3	126	13%
Priority 4	7	< 1%
Priority 5	1	< 1%
Priority 6	0	0%
Total Acres	136	14%
D3: Aquifer Recharge		
Priority 1	0	0%
Priority 2	0	0%
Priority 3	480	48%
Priority 4	377	38%
Priority 5	100	10%
Priority 6	29	3%
Total Acres	986	99%
E2: Recreational Trails (miles)		
(prioritized trail opportunities from Office of Greenways and Trails & Univ. Florida)		
Land Trail Priorities	0.0	
Land Trail Opportunities	0.0	
Total Miles	0.0	
F2: Arch. & Historical Sites (number)		
		0 sites
G1: Sustainable Forestry		
Priority 1	0	0%
Priority 2	0	0%
Priority 3	21	2%
Priority 4	0	0%
Priority 5 - Potential Pinelands	0	0%
Total Acres	21	2%
G3: Forestland for Recharge		
	11	1%

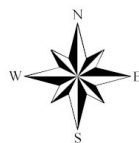
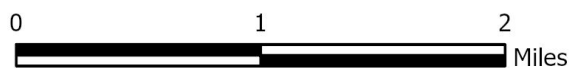
^aAcres of each resource in the project and percentage of project represented by each resource are listed except where noted. This analysis converts site boundary into pixels, which causes slight differences from GIS acres; this effect is greatest on small sites.



BOMBING RANGE RIDGE PROPOSED ADDITION (LOST OAK)

POLK COUNTY

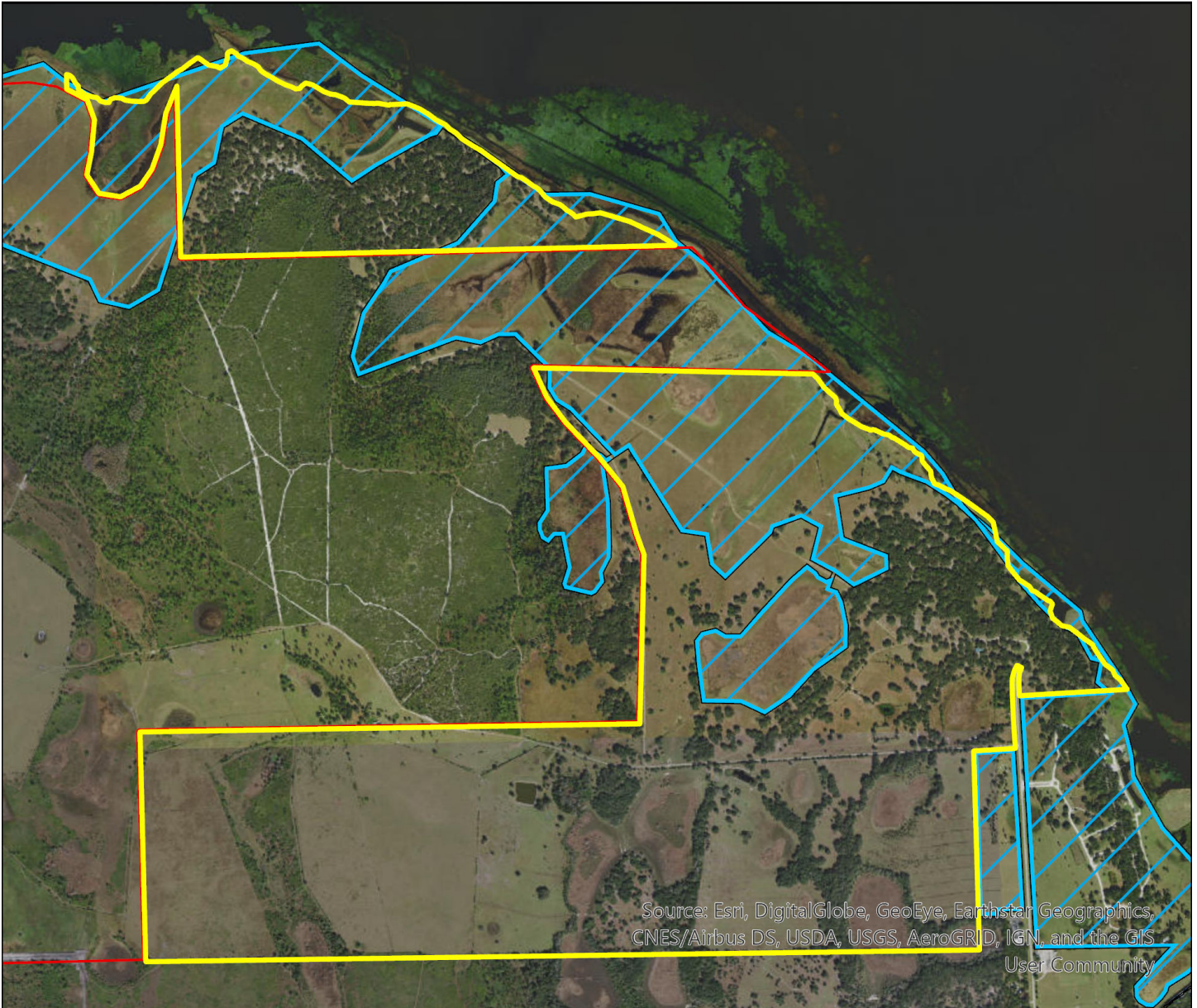
- Proposed Florida Forever BOT Project Addition
- Florida Forever BOT Projects
- State Owned Lands
- Other Conservation Lands



MAY 2020

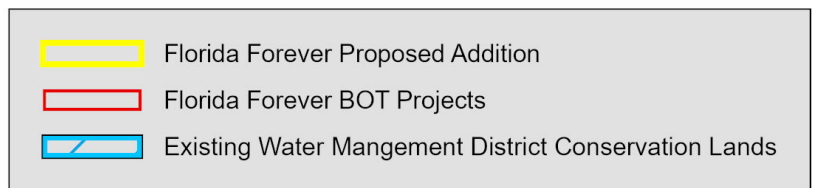
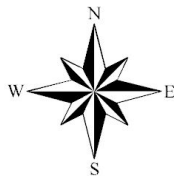
Bombing Range Ridge Proposed Addition

FLORIDA FOREVER BOARD OF TRUSTEES PROJECT PROPOSAL BOUNDARY AS OF MAY 2020



Map Produced by: N. Pasco, May 2020

Background: World Imagery Resolution = 0.3 meter



1018 Thomasville Road
Suite 200-C
Tallahassee, Florida 32303
850-224-8207
fax 850-681-9364
www.fnai.org



FLORIDA FOREST SERVICE
(850) 681-5800



THE CONNER BUILDING
3125 CONNER BOULEVARD
TALLAHASSEE, FLORIDA 32399-1650

FLORIDA DEPARTMENT OF AGRICULTURE AND CONSUMER SERVICES
COMMISSIONER NICOLE "NIKKI" FRIED

May 20, 2020

Ms. Callie DeHaven, Director
Division of State Lands
Department of Environmental Protection
3900 Commonwealth Boulevard
Tallahassee, Florida 32399-3000

Dear Ms. DeHaven:

Please accept this letter of support and management commitment for the proposed Lost Oak Addition to the Bombing Range Ridge (BRR) Florida Forever project. The proposed addition borders the southwestern shoreline of Lake Kissimmee and stretches west toward the eastern boundary of Lake Wales Ridge State Forest (LWRSF). Approval of this amendment to the BRR Florida Forever project would enable acquisition of critical conservation lands between LWRSF Prairie Tract and Lake Kissimmee.

Acquisition of the subject property, as well as existing BRR project lands to the west, as an addition to LWRSF for Florida Forest Service (FFS) management would enhance existing management activities including prescribed burning and restoration in the region in accordance with the LWRSF Acquisition and Restoration Council-approved Ten-Year Land Management Plan.

We express our thanks to the Division of State Lands for its continued partnership in conservation acquisition. Should you need further assistance, please contact Keith Rowell at (850) 681-5818.

Sincerely,

Erin Albury, Director and State Forester
Florida Forest Service

EA/ci

cc: Keith Rowell, Land Programs Administrator
Cat Ingram, Intergovernmental Liaison