

ITEM 17:

Vote on whether to amend the Florida Springs Coastal Greenway Florida Forever Project Boundary to add one parcel totaling approximately 149.0 acres in Citrus County with a tax assessed market value of \$863,960.

LOCATION:

Citrus County

DSL STAFF REMARKS:

The Nature Coast Addition amendment proposed by the Nature Coast Development, LLC, adds one parcel in Citrus County totaling approximately 149.0 acres to the Florida Springs Coastal Greenway Florida Forever project. A 2.75 ac inholding near the center of the proposed addition is excluded; the county property appraiser records indicate this property as Red Level Cemetery. The property owned by the Nature Coast Development, LLC., has a tax assessed value of \$863,960.

The parcel is within the Florida Springs Coastal Greenway and is proposed for fee simple acquisition. The landowner has been contacted and is a willing seller. The Florida Division of Recreation and Parks has confirmed the parcel would be managed as part of the Crystal River Preserve State Park. The Florida Springs Coastal Greenway Florida Forever site is a major link in efforts to preserve the northern peninsular Gulf Coast. It includes the 27,597 acres contained in Crystal River Preserve State Park, which is a true mosaic of scrub, pinewoods, hardwood forests, salt marshes and mangrove islands. The property would provide additional protection to the conservation area and allow expanded recreational opportunities, and wildlife viewing.

The proposal meets the criteria to be submitted as a boundary amendment. The parcel totals less than 1,000 acres has a tax assessed value of less than \$2 million and is less than 10% of the size of the overall project to which it is being added. The proposal area should be designated as essential.

Project History:

On November 19, 1994, the Land Acquisition Advisory Council (LAAC) combined three CARL projects (Crystal River, St. Martins, and Homosassa Reserve) and renamed the project Florida Springs Coastal Greenway in Citrus County. The ragged coastline of Citrus County, with its salt marshes, clear spring runs, hammocks, and flatwoods, has been affected by the encroaching development in this part of the state. The Florida Springs Coastal Greenway project will conserve the natural landscape of this coast, protecting the water quality of the spring runs and estuaries where endangered manatees congregate, preserving natural lands that link with conservation lands to the south, and providing scenic areas where the public can enjoy fishing, and hiking.

On December 9, 2011, ARC placed this project in the Climate Change Lands category of Florida Forever projects. The tax assessed value for the remaining acres to be acquired in this project per property appraiser information (2018) is \$54,209,952.

FNAI Review:

According to the Florida Natural Areas Inventory (FNAI), nearly the entire proposal contributes to Ecological Greenways, Natural Floodplain Function, and Surface Water Protection. The

proposal also provides substantial contributions to Aquifer Recharge.

STAFF RECOMMENDATION:

Vote on the proposed boundary amendment.

ARC RECOMMENDATION:

Project	DHR	FFS	Lynetta Griner	FWC	Bill Palmer	Elva Peppers	DEP	Selected
Florida Springs Coastal Greenway: Nature Coast Addition								



1018 Thomasville Road
Suite 200-C
Tallahassee, FL 32303
850-224-8207
www.fnai.org

To: Deborah Burr, DEP/OES
From: Dale Jackson, FNAI
Date: May 21, 2020
Subject: Proposed Boundary Modification to the Florida Springs Coastal Greenway Forever BOT project, Citrus County – Nature Coast

The Nature Coast proposed addition to the Florida Springs Coastal Greenway Florida Forever BOT project (FSCG) includes 149 acres in northwestern Citrus County. The single tract is contiguous with Crystal River Preserve State Park (27,597 acres), as are other tracts of FSCG. The BOT project's focus is preservation of native habitats, water quality, and wildlife (particularly manatees) along the northern peninsular Gulf Coast.

About half of the tract remains forested, possibly with remnant mesic flatwoods that have been hardwood-invaded (referred to as mixed hardwood-coniferous in land cover map analyses). Much of the rest, especially in the southern half, is cleared with scattered trees and probably represents unimproved pasture. The northern boundary is formed by a powerline right-of-way and associated street. A small, cleared parcel near the center of the proposal is excluded as an inholding; this shows as a cemetery on a topographic map. The application also notes 23 acres of wetlands, chiefly represented by a narrow east-west band of basin/floodplain swamp across the center of the property.

The FNAI database contains no records of rare species within the proposed addition, although there are nearby older records for gopher tortoise (also noted as present in the application), eastern indigo snake, and eastern diamondback rattlesnake.

As summarized in the accompanying Florida Forever Measures Evaluation (FFME), nearly the entire proposed addition contributes to Ecological Greenways, Natural Floodplain Function, and Surface Water Protection. The proposal also provides substantial contributions to Aquifer Recharge.



Florida Resources
and Environmental
Analysis Center

Institute of Science
and Public Affairs

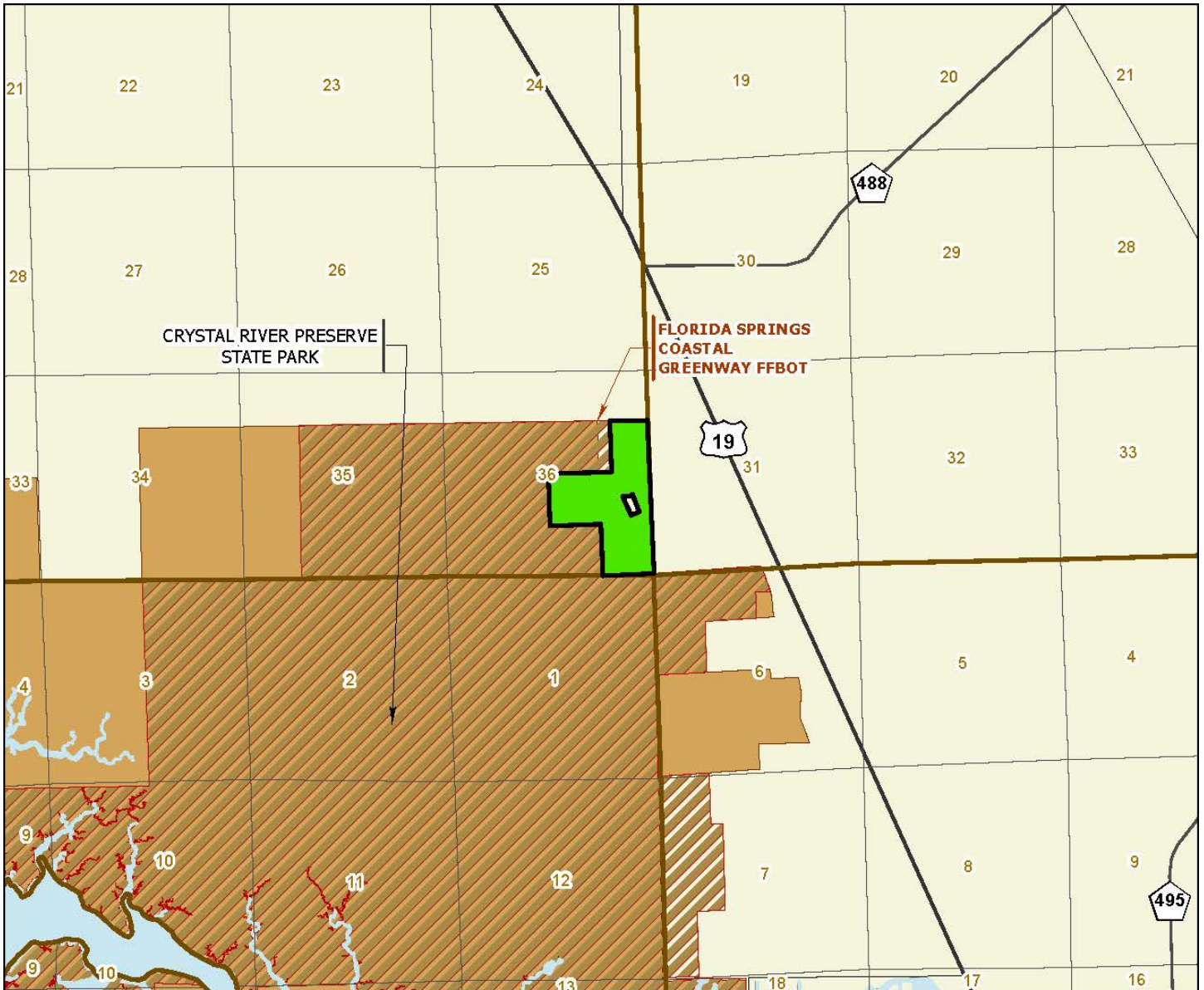
Florida Springs Coastal Greenway Addition (Nature Coast): Florida Forever Measure Evaluation 20200518

GIS ACRES = 149

MEASURES	Resource Acres ^a	% of project
B1: Strategic Habitat Conservation Areas		
Priority 1	0	0%
Priority 2	2	1%
Priority 3	0	0%
Priority 4	0	0%
Priority 5	55	37%
Total Acres	57	38%
B2: FNAI Habitat Conservation Priorities		
Priority 1	0	0%
Priority 2	0	0%
Priority 3	2	1%
Priority 4	111	75%
Priority 5	1	< 1%
Priority 6	16	11%
Total Acres	130	87%
B3: Ecological Greenways		
Priority 1	149	100%
Priority 2	0	0%
Priority 3	0	0%
Priority 4	0	0%
Priority 5	0	0%
Priority 6	0	0%
Total Acres	149	100%
B4: Under-represented Natural Communities		
Upland Glade (G1)	0	0%
Pine Rockland (G1)	0	0%
Scrub and Scrubby Flatwoods (G2)	0	0%
Rockland Hammock (G2)	0	0%
Dry Prairie (G2)	0	0%
Seepage Slope (G2)	0	0%
Sandhill (G3)	0	0%
Sandhill Upland Lake (G3)	0	0%
Upland Pine (G3)	0	0%
Mesic/Wet Flatwoods (G4)	0	0%
Upland Hardwood Forest (G5)	0	0%
Total Acres	0	0%
B6: Occurrences of FNAI Tracked Species		
G1	0	
G2	0	
G3	0	
G4	0	
G5	0	
Total	0	
C4: Natural Floodplain Function		
Priority 1	0	0%
Priority 2	0	0%
Priority 3	12	8%
Priority 4	130	87%
Priority 5	0	0%
Priority 6	0	0%
Total Acres	142	95%

MEASURES (continued)	Resource Acres ^a	% of project
C5: Surface Water Protection		
Priority 1	141	94%
Priority 2	0	0%
Priority 3	0	0%
Priority 4	6	4%
Priority 5	0	0%
Priority 6	0	0%
Priority 7	0	0%
Total Acres	147	98%
C7: Fragile Coastal Resources		
Fragile Coastal Uplands	0	0%
Imperiled Coastal Lakes	0	0%
Coastal Wetlands	0	0%
Total Acres	0	0%
C8: Functional Wetlands		
Priority 1	0	0%
Priority 2	0	0%
Priority 3	5	3%
Priority 4	23	16%
Priority 5	0	0%
Priority 6	0	0%
Total Acres	28	19%
D3: Aquifer Recharge		
Priority 1	0	0%
Priority 2	0	0%
Priority 3	19	13%
Priority 4	66	44%
Priority 5	0	0%
Priority 6	0	0%
Total Acres	85	57%
E2: Recreational Trails (miles)		
<small>(prioritized trail opportunities from Office of Greenways and Trails & Univ. Florida)</small>		
Land Trail Priorities	0.0	
Land Trail Opportunities	0.0	
Total Miles	0.0	
F2: Arch. & Historical Sites (number)		
	0 sites	
G1: Sustainable Forestry		
Priority 1	0	0%
Priority 2	0	0%
Priority 3	< 1	< 1%
Priority 4	0	0%
Priority 5 - Potential Pinelands	0	0%
Total Acres	0	0%
G3: Forestland for Recharge		
	0	0%

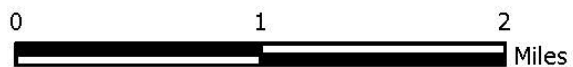
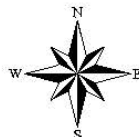
^aAcres of each resource in the project and percentage of project represented by each resource are listed except where noted. This analysis converts site boundary into pixels, which causes slight differences from GIS acres; this effect is greatest on small sites.



FLORIDA SPRINGS COASTAL GREENWAY PROPOSED ADDITION (NATURE COAST ADDITION)

CITRUS COUNTY

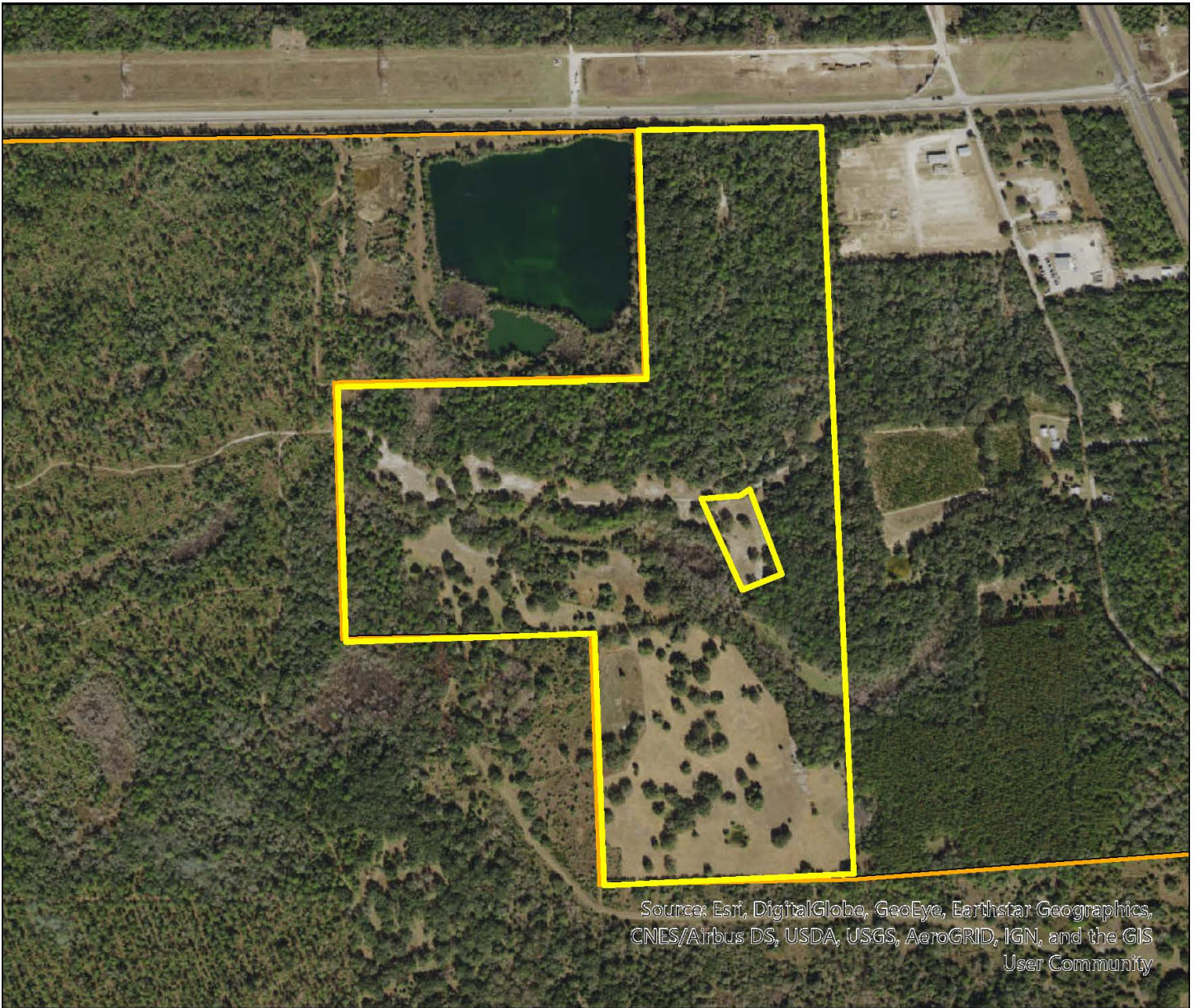
-  Proposed Florida Forever BOT Project Addition
-  Florida Forever BOT Projects
-  State Owned Lands



MAY 2020

Florida Springs Coastal Greenway Proposed Addition

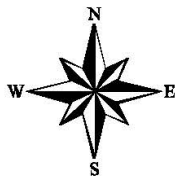
FLORIDA FOREVER BOARD OF TRUSTEES PROJECT PROPOSED ADDITION BOUNDARY AS OF MAY 2020



Source: Esri, DigitalGlobe, GeoEye, Earthstar Geographics, CNES/Airbus DS, USDA, USGS, AeroGRID, IGN, and the GIS User Community

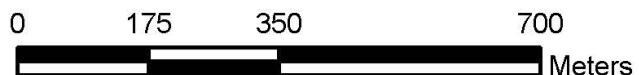
Map Produced by: N. Pasco, May 2020

Background: World Imagery Resolution = 0.3 meter



	Florida Forever Proposed Addition
	Existing State Conservation Lands

1018 Thomasville Road
Suite 200-C
Tallahassee, Florida 32303
850-224-8207
fax 850-681-9364
www.fnai.org



Crystal River Preserve State Park
Nature Coast Development, LLC – potential acquisition
June 1, 2020

Division of Recreation and Parks - Management Prospectus

The potential acquisition parcel (parcel 16E17S36-12000) contains approximately 149 acres and is located immediately adjacent to the northeast boundary of Crystal River Preserve State Park (Preserve) in Citrus County, Florida. The parcel is identified in the Approved 2018 Unit Management Plan as included in the Preserve's Optimum Boundary and should be a high priority acquisition.

The parcel is located nearly five miles north of Crystal River, 0.3 miles west of U.S. Highway 98, and south of Powerline Road. It contains nearly 23 acres of wetlands that are crucial for wetland protection and also provide habitat for state and federally listed species. Gopher tortoises (*Gopherus polyphemus*) have been documented on the property as well as a number of other imperiled species. The legal boundary of the Nature Coast property also bisects the old mine lake at the corner of the Preserve's property, greatly hampering perimeter (boundary road/fence) management.

The parcel was permitted in June 2010 for a limestone mining operation known as the Nature Coast Mine. A large mining operation immediately adjacent to the preserve could negatively disrupt the natural sheetflow process of surface and groundwater discharge to numerous freshwater wetland communities, especially hydric hammocks, on the preserve. Central to the parcel in question is also an unnamed blackwater stream that intermittently provides freshwater discharge to the preserve's wetland communities. Disruption of the natural sheet flow process that normally would occur in the hydric hammock and other freshwater wetlands of the preserve may have significant impacts on the adjacent estuarine communities as well as the ecological health of "Springs Coast" region. This region is significant for its designation as an Outstanding Florida Water for all waterbodies adjacent to the Crystal River Preserve and St. Martins Marsh Aquatic Preserve.

Additionally, the parcel surrounds a private 2.75-acre historic cemetery (Red Level Cemetery) containing approximately 300 grave sites dating back as far as 1863. This site serves a number of local families and is still actively used for funeral ceremonies (Jack Dumas, pers. Comm.) with room for 200 more burials.

Acquisition of the parcel would have multiple benefits to the Crystal River Preserve State Park and the Springs Coast Region such as protection of natural sheetflow processes of numerous wetlands, increased habitat connectivity for wildlife in the Springs Coast region, potential benefits for the preserve's conceptual development concept, protection of sensitive cultural resources, and increased access for staff to conduct resource management activities.


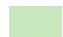
The Division of Recreation and Parks supports the acquisition of the parcel and would accept management of the parcel as an addition to Crystal River Preserve State Park if acquired by the Board of Trustees of the Internal Improvement Trust Fund of the State of Florida.

C.2 Tax Parcel on Aerial Photograph



**Aerial Photograph
Nature Coast Addition
Citrus County, Florida**

Legend

-  Project Boundary
-  Florida Conservation Lands



Keith Fountain Law, PLLC
Data: FLMA 3/2020 FNAI;
Parcels: Citrus Co. Prop.
Appraiser; Basemap: Bing