

ITEM 18:

Vote on whether to amend the Etoniah/Cross Florida Greenway Florida Forever Project Boundary to add ten parcels totaling approximately 563 acres in Putnam County with a tax assessed market value of \$1,457,600.

LOCATION:

Putnam County

DSL STAFF REMARKS:

The J-Mil amendment, proposed by the Putnam Land Conservancy, adds ten parcels in Putnam County totaling approximately 563 acres to the Etoniah/Cross Florida Greenway Florida Forever project. The property is owned by the J-Mil Family Limited Partnership LLLP and John Miller. The ten parcels have a combined tax assessed value of \$1,457,600. The landowners have been contacted and are willing sellers. The properties are proposed for less-than-fee acquisition and land management responsibilities would remain with the landowners.

The property is mostly forested and consists primarily of pine plantation interspersed with the occasional depression marsh and swamp. Some natural undisturbed mesic flatwoods may also be present. Floodplain swamp associated with Burntbridge Brook is in the southern portion of the proposal. The project could contribute to water quality protection for Deep Creek, a tributary of the Ocklawaha River. The property is likely to provide habitat for imperiled species such as Florida black bear (*Ursus americanus floridanus*) and is identified as Priority 2 within the Florida Ecological Greenways Network.

Boundary Amendment Criteria:

The proposal meets the criteria to be submitted as a boundary amendment. The parcels total less than 1,000 acres, have a tax assessed value of less than \$2 million, and are less than 10% of the size of the overall project to which they are being added. The proposal area should be designated as essential.

Project History:

The Etoniah/Cross Florida Greenway project, located in Citrus, Clay, Levy, Marion, and Putnam Counties, was approved in 1995. Extending from the Withlacoochee River to the St. Johns River, the project will protect large expanses of flatwoods, sandhills and scrub. The Etoniah/Cross Florida Greenway project was designed to fill in gaps between conservation lands in the region, providing a pathway across Florida for species such as the Florida black bear.

The Etoniah/Cross Florida Greenway project currently identifies 92,640 acres for acquisition with 52,558 acres remaining to be acquired. The project is ranked number nine in the Critical Natural Lands category of the 2022 Florida Forever Priority List. The tax assessed value of the remaining acres to be acquired in this project per property appraiser information (2020) is \$132,744,322.

FNAI Review:

According to the FNAI Florida Forever Measures Evaluation the proposed J-Mil Family Limited Partnership LLLP and John Miller parcels contribute substantially to Ecological Greenways (100%), Aquifer Recharge (100%), Strategic Habitat Conservation Areas (98%), Surface Water

Protection (98%), Sustainable Forestry (80%) and Natural Floodplain Function (56%).

STAFF RECOMMENDATION:

Vote on the proposed boundary amendment.

ARC RECOMMENDATION:

Project	DHR	FFS	Lynetta Griner	DEP	FWC	Bill Palmer	Elva Peppers	Selected
Etoniah/Cross Florida Greenway: J-Mil								



To: Sine Murray, DEP/OES
 From: Dale Jackson, FNAI
 Date: October 20, 2022
 Subject: Proposed Boundary Modification to Florida Forever BOT Project: Etoniah/Cross Florida Greenway – J-Mil

The primary goal of the Etoniah/Cross Florida Greenway Florida Forever Project (ECFG) is to protect a corridor of forested land and water to provide recreational opportunities and natural resource protection in northern peninsular Florida. The J-Mill property is proposed as a 562 (553 GIS)-acre addition to the project for less-than-fee simple acquisition. The property is situated in southern Putnam County ca. 1 mile north of Ocklawaha Lake (Rodman Reservoir).

The J-Mill property consists of two tracts--a larger (543 acres) irregularly shaped tract and a small (10 acres), square parcel separated from it by 0.13 mile. Tracts within the existing ECFG project nearly surround the proposal; however, the J-Mil property has only a 0.38-mile shared border with the current project. Lands within the extensive Marjorie Harris Carr Cross Florida Greenway lie to the south, east, and northeast of the proposal.

Landcover on the larger tract is chiefly forested but mostly in pine plantation (384 acres per application), with the exception of natural drainages (tributaries of Bruntbridge Brook) in the southern portion of the property; these principally support floodplain swamp (cypress). Approximately 28 acres at the northern end of the proposal has been recently replanted; bedding for the trees is evident on 2020 aerial imagery. One small area in the northeastern arm of the tract still supports mesic/wet flatwoods that have not been converted to plantation. At least five small depression marshes and one dome swamp are present within the pine plantations; the condition of these is unknown. Topographic relief on the tract is low, with elevations mostly in the 50–60 ft range. Unimproved logging roads provide access to much of the tract. The small tract appears less altered, possibly a mature planted stand or natural mesic flatwoods; a cleared transmission corridor encroaches the eastern property line. Remote analysis indicates 47 acres (9%) of the total site represent mesic/wet flatwoods, an under-represented natural community.

The FNAI database shows that the proposed tract lies within a region in which the Florida Fish and Wildlife Conservation Commission considers the Florida black bear (*Ursus americanus floridanus*, G4T4/S4, N, N) to be abundant. No other rare species occurrences are documented in the FNAI database.

The Florida Forever Measures Evaluation (FFME) following this memo is based on the Florida Forever Conservation Needs Assessment developed by FNAI. The data used in that analysis represent a standardized, statewide perspective of natural community distributions based primarily on data from the Cooperative Land Cover Map. The proposed addition lies within a landscape that contributes substantially (> 95% of area) to priority 2 and 4 Surface Water Protection, priority 2, 3, and 4 Aquifer Recharge, and priority 2 Ecological Greenways. The proposed property contributes moderately (ca. 55%) to Natural Floodplain Function and Sustainable Forestry, and somewhat less (< 25%) to Functional Wetlands and Under-represented Natural Communities (mesic/wet flatwoods).

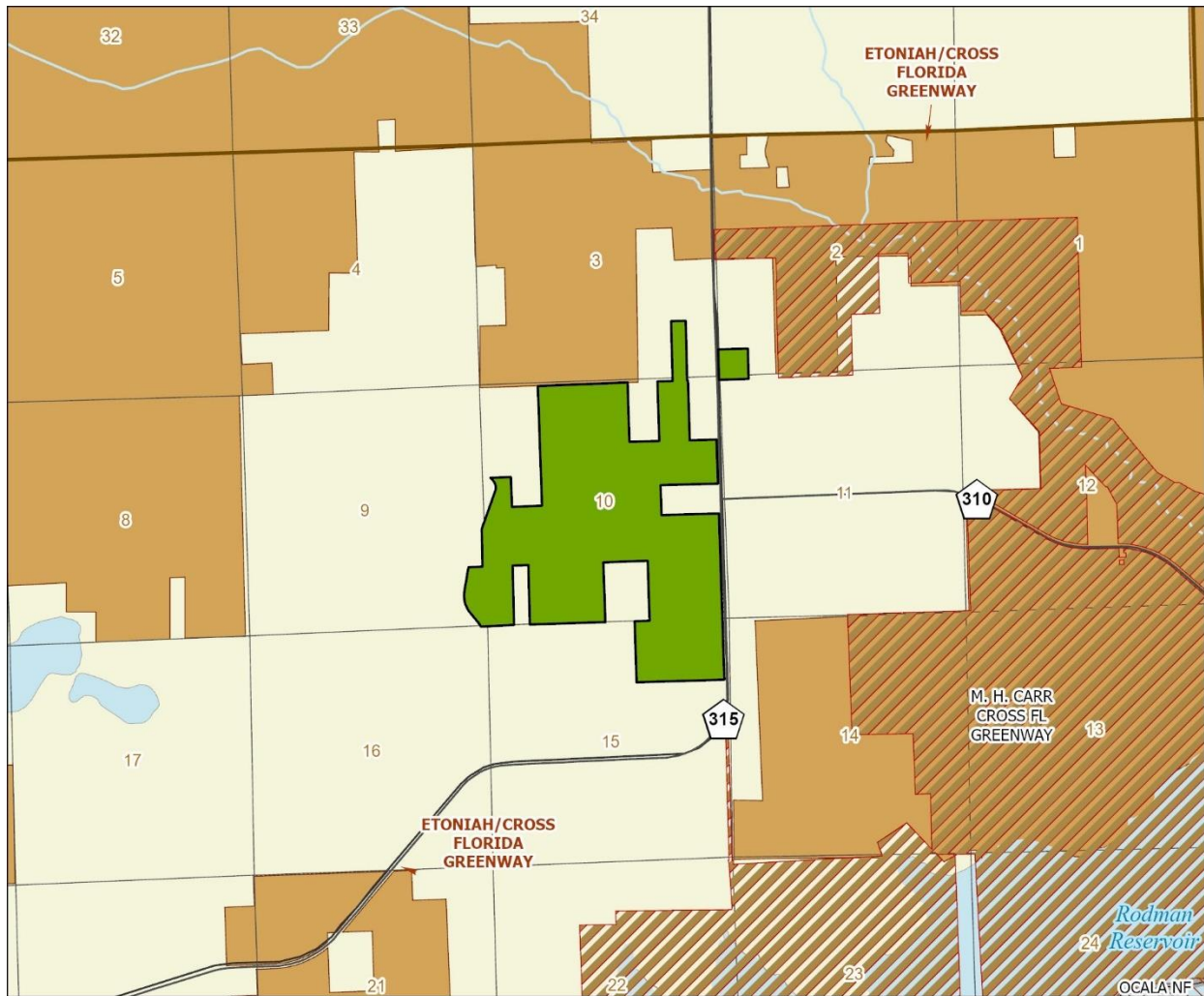
Etoniah/Cross Florida Greenway (J-Mil): Florida Forever Measure Evaluation 20221014

GIS ACRES = 553

MEASURES	Resource Acres ²	% of project
B1: Strategic Habitat Conservation Areas		
Priority 1	0	0%
Priority 2	2	< 1%
Priority 3	483	87%
Priority 4	0	0%
Priority 5	58	11%
Total Acres	543	98%
B2: FNAI Habitat Conservation Priorities		
Priority 1	0	0%
Priority 2	0	0%
Priority 3	0	0%
Priority 4	26	5%
Priority 5	8	2%
Priority 6	93	17%
Total Acres	128	23%
B3: Ecological Greenways		
Priority 1	0	0%
Priority 2	553	100%
Priority 3	0	0%
Priority 4	0	0%
Priority 5	0	0%
Total Acres	553	100%
B4: Under-represented Natural Communities		
Upland Glade (G1)	0	0%
Pine Rockland (G1)	0	0%
Scrub and Scrubby Flatwoods (G2)	0	0%
Rockland Hammock (G2)	0	0%
Dry Prairie (G2)	0	0%
Seepage Slope (G2)	0	0%
Sandhill (G3)	0	0%
Sandhill Upland Lake (G3)	0	0%
Upland Pine (G3)	0	0%
Mesic/Wet Flatwoods (G4)	47	9%
Upland Hardwood Forest (G5)	0	0%
Total Acres	47	9%
B6: Occurrences of FNAI Tracked Species		
G1	0	
G2	0	
G3	0	
G4	1	
G5	0	
Total	1	
C4: Natural Floodplain Function		
Priority 1	0	0%
Priority 2	0	0%
Priority 3	6	1%
Priority 4	306	55%
Priority 5	0	0%
Priority 6	0	0%
Total Acres	312	56%

MEASURES (continued)	Resource Acres ²	% of project
C5: Surface Water Protection		
Priority 1	0	0%
Priority 2	367	66%
Priority 3	0	0%
Priority 4	175	32%
Priority 5	0	0%
Priority 6	0	0%
Priority 7	0	0%
Total Acres	542	98%
C7: Fragile Coastal Resources		
Fragile Coastal Uplands	0	0%
Imperiled Coastal Lakes	0	0%
Coastal Wetlands	0	0%
Total Acres	0	0%
C8: Functional Wetlands		
Priority 1	0	0%
Priority 2	0	0%
Priority 3	2	< 1%
Priority 4	113	21%
Priority 5	0	0%
Priority 6	0	0%
Total Acres	115	21%
D3: Aquifer Recharge		
Priority 1	0	0%
Priority 2	71	13%
Priority 3	327	59%
Priority 4	155	28%
Priority 5	0	0%
Priority 6	0	0%
Total Acres	553	100%
E2: Recreational Trails (miles) <small>(prioritized trail opportunities from Office of Greenways and Trails & Univ. Florida)</small>		
Land Trail Priorities	0.0	
Land Trail Opportunities	0.0	
Total Miles	0.0	
F2: Arch. & Historical Sites (number) 0 sites		
G1: Sustainable Forestry		
Priority 1	0	0%
Priority 2	0	0%
Priority 3	439	79%
Priority 4	0	0%
Priority 5 - Potential Pinelands	5	< 1%
Total Acres	444	80%
G3: Forestland for Recharge 300 54%		

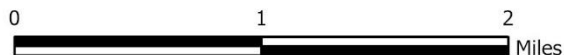
*Acres of each resource in the project and percentage of project represented by each resource are listed except where noted. This analysis converts site boundary into pixels, which causes slight differences from GIS acres; this effect is most noticeable on small sites.



ETONIAH/CROSS FLORIDA GREENWAY PROPOSED ADDITION (J-MIL)

PUTNAM COUNTY

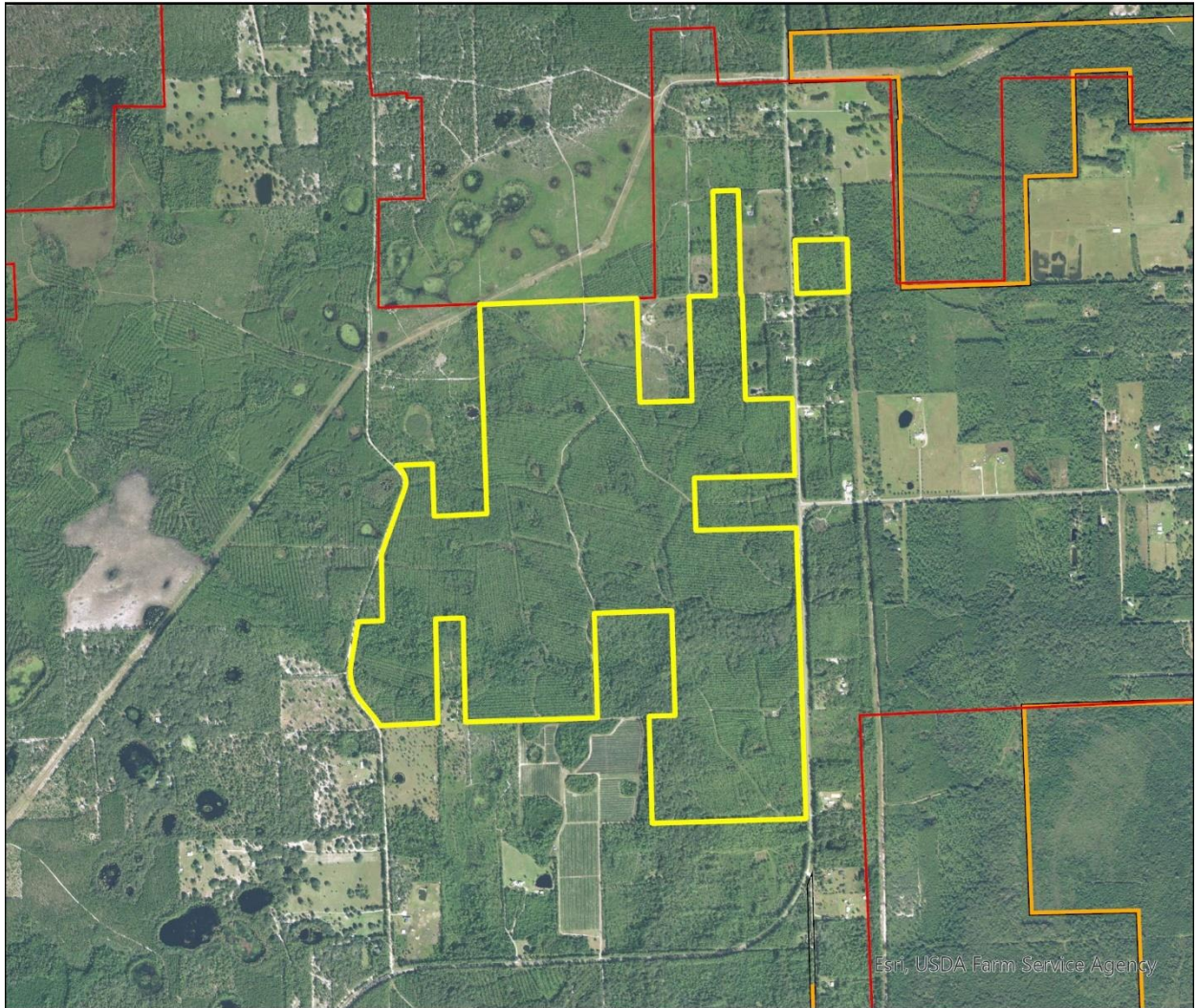
- Proposed Addition
- Florida Forever BOT Projects
- State Owned Lands
- Other Conservation Lands



MAP BY FL NATURAL AREAS INVENTORY OCTOBER 2022

Etoniah/Cross Florida Greenway Proposed Addition (J-MII)

FLORIDA FOREVER BOARD OF TRUSTEES PROJECT PROPOSED ADDITION AS OF OCTOBER 2022



Map Produced by: FL Natural Areas Inventory, N. Pasco, October 2022

Background: USA NAIP Imagery Resolution = 1.0 meter

