

**ITEM 12:**

Vote on whether to amend the St. Johns River Blueway Florida Forever Project Boundary to add five parcels totaling approximately 112 acres in Clay County with a tax assessed market value of \$556,815.

**LOCATION:**

Clay County

**DSL STAFF REMARKS:**

Clay County Board of County Commissioners proposes adding five parcels in Clay County totaling approximately 112 acres to the St. Johns River Blueway Florida Forever Project for fee simple acquisition. The property is part of an enclave along the western bank of the St. Johns River surrounded by the St. Johns River Water Management District (SJRWMD) owned Bayard Conservation Area. The property can only be accessed through a non-exclusive easement from Clay County Road 209 from the SJRWMD. The five parcels, belonging to members of the J.P. Hall Family, have a combined tax assessed value of \$556,815.

The proposed boundary amendment revises the previous proposal (ARC Item 14) deferred during the December 2019 ARC meeting by increasing the number of parcels, acreage and site assessment “Historical Background Research and Cultural Reconnaissance Survey of the San Francisco de Pupo Site and Surrounding Parcels, Clay County, Florida” by SEARCH, Inc., dated October 2020. In their November 18, 2020 letter, the Department of Historical Resources (DHR) after review of the survey report provided by SEARCH stated that, “the report demonstrates the archaeological integrity of Fort San Francisco de Pupo (8CL10).”

The St. Johns River Blueway project’s principal goal is to preserve the remaining undeveloped shorelines of the river and its tributaries. Numerous archaeological and historical resources are recorded within this project. The property in this proposal is the site of the Spanish Fort San Francisco de Pupo built around 1734 on the west bank of the St. Johns River along with Fort Picolata on the east bank to guard the Castillo de San Marcos in St. Augustine. The site later functioned as a ferry crossing for the Spanish province and later, the Federal highway. The Clay County Board of County Commissioners has confirmed it would manage the property for preservation of the historic resources, with public access for interpretation and education, and has provided a management prospectus.

The proposal meets the criteria to be submitted as a boundary amendment. The parcels total less than 1,000 acres, have a tax assessed value of less than \$2 million, and are less than 10% of the size of the overall project to which it is being added. The proposal area should be designated as essential.

*Project History:*

In 2002, the St. Johns River Blueway Project was added to Group A of the 2003 Florida Forever Priority list. The sponsor for this fee-simple and less-than-fee acquisition with 290 landowners was St. Johns County. The project runs along the eastern shore of the St. Johns River between Green Cove Springs and Palatka and preserves the last remaining undisturbed shorelines of the river and several of its tributaries. The project also includes numerous recorded archaeological and historical resources.

The St. Johns River Blueway Florida Forever project includes over 26,229 acres with 17,667 acres remaining and is ranked number 9 in the Climate Change Category on the 2020 Florida Forever Priority List. The tax assessed value for the remaining acres to be acquired in this project per property appraiser information (2018) is \$283,502,614.

*FNAI Review:*

According to the Florida Natural Areas Inventory (FNAI), the proposal contains two archaeological sites and contributes significantly to Surface Water Protection, Ecological Greenways and Aquifer Recharge Florida Forever Measures.

**STAFF RECOMMENDATION:**

Vote on the proposed boundary amendment.

**ARC RECOMMENDATION:**

<b>Project</b>	<b>DHR</b>	<b>FFS</b>	<b>Lynetta Griner</b>	<b>FWC</b>	<b>Bill Palmer</b>	<b>Elva Peppers</b>	<b>DEP</b>	<b>Selected</b>
St. Johns River Blueway: San Francisco de Pupo								



**FLORIDA DEPARTMENT *of* STATE**

**RON DESANTIS**  
Governor

**LAUREL M. LEE**  
Secretary of State

Joshua Goodwin  
Florida Division of Historical Resources  
Bureau of Archaeological Research  
1001 de Soto Park Drive  
Tallahassee, Florida 32301  
Joshua.goodwin@dos.myflorida.com

November 18, 2020

Shauna Allen  
Florida Department of Environmental Protection  
Division of State Lands  
3900 Commonwealth Blvd.  
Tallahassee, Florida 32399-3000  
[shauna.r.allen@floridadep.gov](mailto:shauna.r.allen@floridadep.gov)

Ms. Allen:

The Division of Historical Resources has completed its review of the cultural resource assessment survey report by SEARCH, Inc. of the properties proposed as an amendment to the ST. Johns River Blueway Florida Forever Project Boundary. It is the opinion of the Division of Historical Resources that the report demonstrates the archaeological integrity of Fort San Francisco de Pupo (8CL10). The Division of Historical Resources is pleased to endorse this boundary amendment to the existing Florida Forever Project for the preservation of these important Historical Resources.

Sincerely,

A handwritten signature in cursive script, appearing to read "Joshua Goodwin".

Joshua Goodwin



1018 Thomasville Road  
Suite 200-C  
Tallahassee, FL 32303  
850-224-8207  
[Florida Natural Areas Inventory](#)

To: Deborah Burr, DEP/OES  
From: Dale R. Jackson, FNAI  
Date: November 9, 2020  
Subject: Proposed Boundary Modification to Florida Forever BOT Project: **St. Johns River Blueway** – San Francisco de Pupo, Clay County

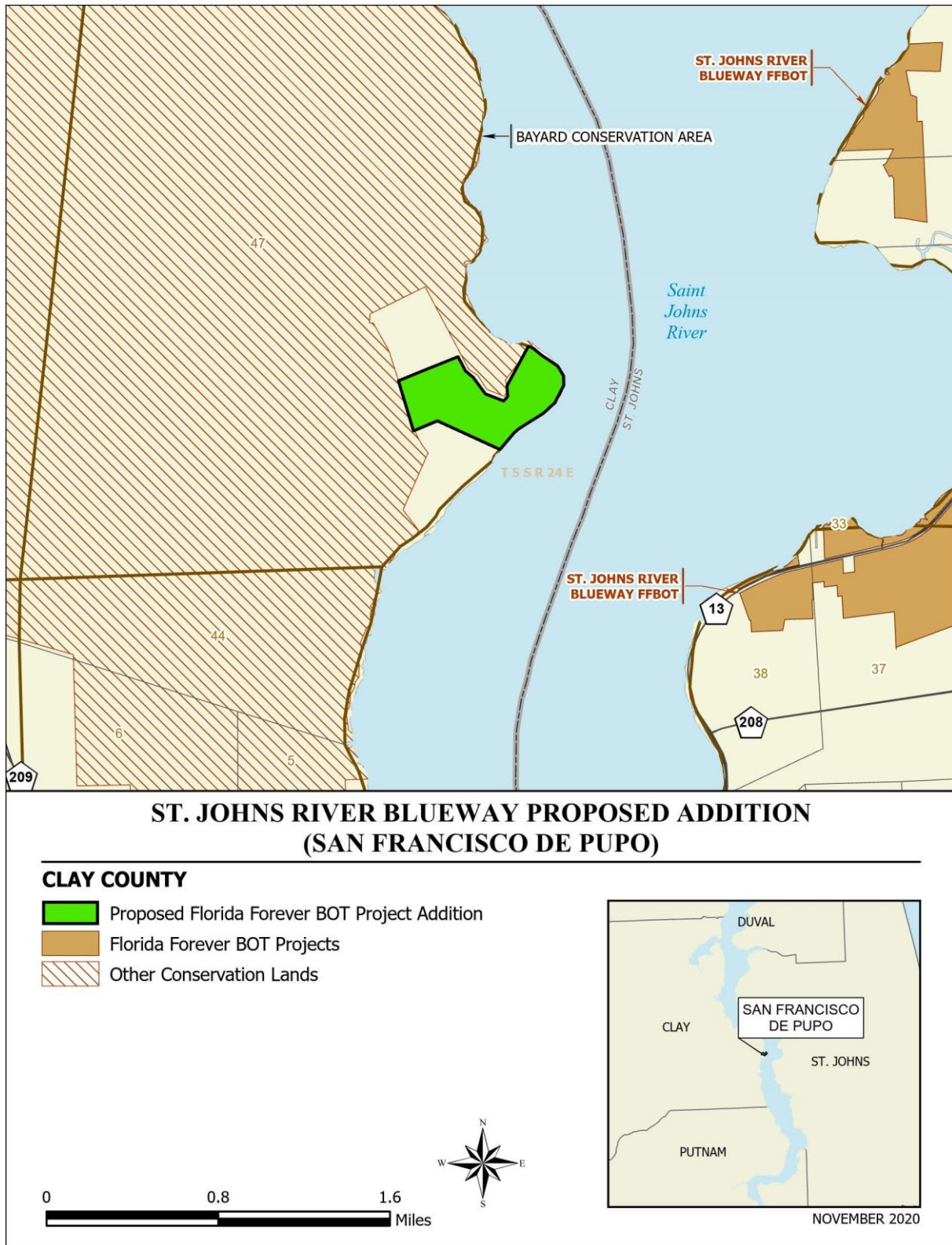
The St. Johns River Blueway FFBOT project is designed to preserve the last remaining shorelines of the St. Johns River and several of its tributaries in one of the fastest growing areas in the state. In addition to securing greater recreational access, the project would facilitate the protection of archaeological and historical resources that are common along the river corridor.

The proposed addition includes ca. 112 acres (124.24 GIS acres) located at Bayard Point on the western bank of the St. Johns River, ca. 5 miles upstream (southeast) of Green Cove Springs. All parcels are available for fee-simple acquisition. Numerous tracts of the FFBOT project lie across the river along its eastern bank. The site occupies the eastern end of a slightly elevated “peninsula” of land that extends into the floodplain marsh of the St. Johns River. Bayard Conservation Area (BCA; St. Johns River Water Management District) encompasses all of the land inland, north, and south of the upland peninsula, about half of which is included in this proposal. A private road from the mainland runs along the southern edge of this peninsula, borders the western edge of the site, and terminates on the river at what appears to be a small residential enclave.

The proposal includes 0.6 mile (per application) of shoreline on the St. Johns River. The site’s uplands lie <10 feet above the river and its bordering marshes. Landcover consists chiefly of a mixture of wetland and low-lying upland, with ca. 30% having been converted to pasture, farming structures, and roads. Remote analysis indicates that 25% of the site (31.2 acres) supports mesic/wet flatwoods.

The FNAI database contains two records of rare species. A long-term (since 1980s) bald eagle (*Haliaeetus leucocephalus*, G5/S3, N, N) nest was still active when surveyed in 2013. The Florida black bear (*Ursus americanus floridanus*, G5T4/S4, N, N) is considered common regionally by the FWC and may occasionally occur on or near the site.

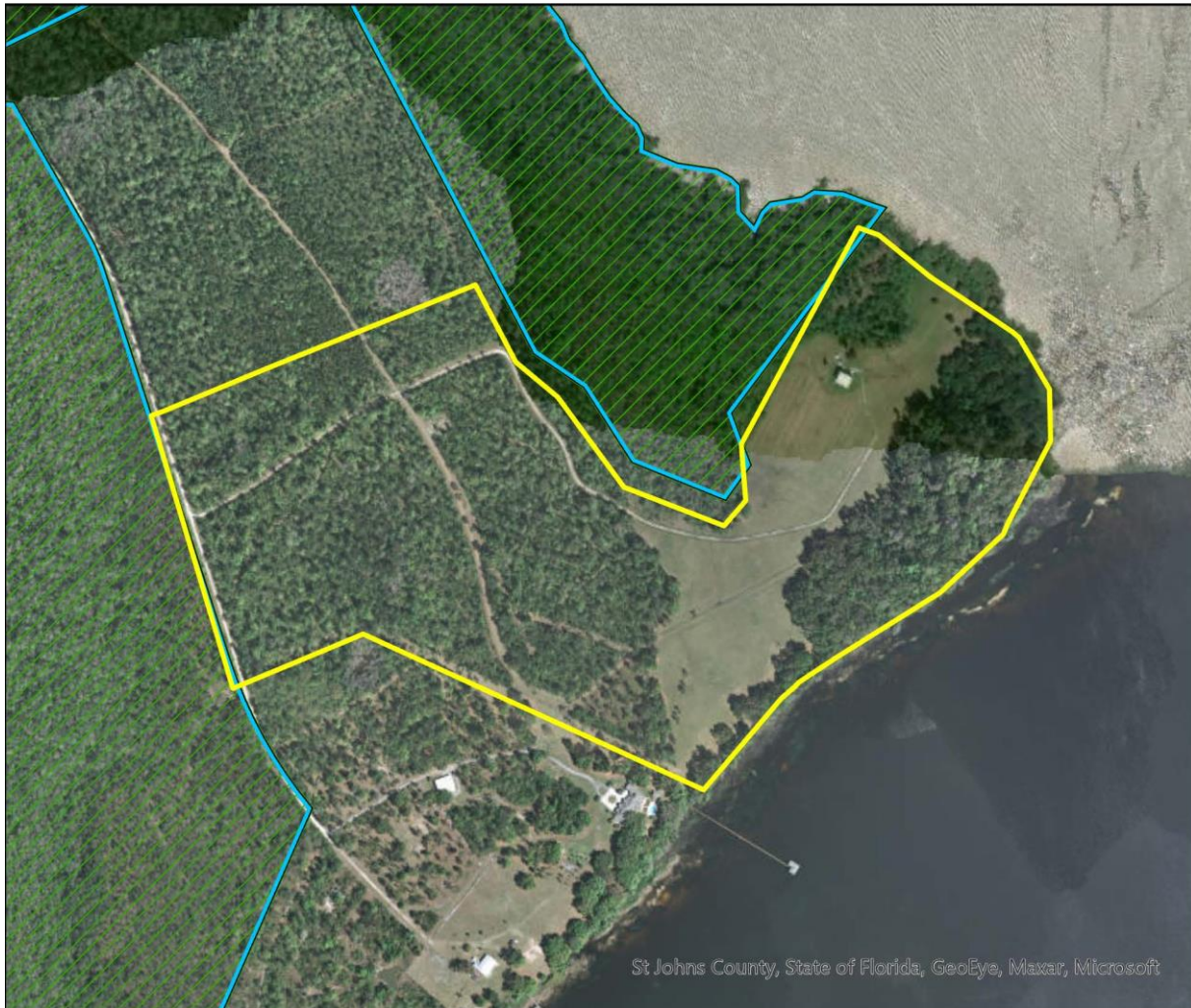
The Florida Forever Measures Evaluation (FFME) at the end of this memo is based on the Florida Forever Conservation Needs Assessment developed by FNAI. The data used in that analysis represent a standardized, statewide perspective of natural community distributions based primarily on data from the Cooperative Land Cover Map. Most to all of the proposed addition contributes to Surface Water Protection, Aquifer Recharge, and Ecological Greenways, with additional substantial contributions to Sustainable Forestry, Natural Floodplain Function, and Under-represented Natural Communities (mesic/wet flatwoods).





## St. Johns River Blueway Proposed Addition (San Francisco de Pupo)

FLORIDA FOREVER BOARD OF TRUSTEES PROJECT PROPOSAL BOUNDARY AS OF NOVEMBER 2020

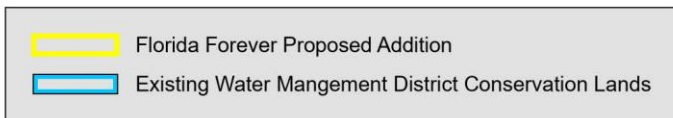


Map Produced by: N. Pasco, November 2020

Background: World Imagery Resolution = 0.3 meter



1018 Thomasville Road  
Suite 200-C  
Tallahassee, Florida 32303  
850-224-8207  
fax 850-681-9364  
www.fnai.org



St. Johns River Blueway Addition: Florida Forever Measure Evaluation 20201104

GIS ACRES = 124.24

MEASURES	Resource Acres <sup>a</sup>	% of project
<b>B1: Strategic Habitat Conservation Areas</b>		
Priority 1	0.00	0%
Priority 2	0.22	< 1%
Priority 3	84.18	68%
Priority 4	0.00	0%
Priority 5	2.84	2%
<b>Total Acres</b>	<b>87.23</b>	<b>70%</b>
<b>B2: FNAI Habitat Conservation Priorities</b>		
Priority 1	0.00	0%
Priority 2	0.00	0%
Priority 3	42.70	34%
Priority 4	20.68	17%
Priority 5	36.75	29%
Priority 6	24.41	20%
<b>Total Acres</b>	<b>124.54</b>	<b>100%</b>
<b>B3: Ecological Greenways</b>		
Priority 1	0.00	0%
Priority 2	0.00	0%
Priority 3	0.00	0%
Priority 4	0.00	0%
Priority 5	124.65	100%
Priority 6	0.00	0%
<b>Total Acres</b>	<b>124.65</b>	<b>100%</b>
<b>B4: Under-represented Natural Communities</b>		
Upland Glade (G1)	0.00	0%
Pine Rockland (G1)	0.00	0%
Scrub and Scrubby Flatwoods (G2)	0.00	0%
Rockland Hammock (G2)	0.00	0%
Dry Prairie (G2)	0.00	0%
Seepage Slope (G2)	0.00	0%
Sandhill (G3)	0.00	0%
Sandhill Upland Lake (G3)	0.00	0%
Upland Pine (G3)	0.00	0%
Mesic/Wet Flatwoods (G4)	31.19	25%
Upland Hardwood Forest (G5)	0.00	0%
<b>Total Acres</b>	<b>31.19</b>	<b>25%</b>
<b>B6: Occurrences of FNAI Tracked Species</b>		
G1	0	
G2	0	
G3	0	
G4	1	
G5	1	
<b>Total</b>	<b>2</b>	
<b>C4: Natural Floodplain Function</b>		
Priority 1	0.00	0%
Priority 2	1.11	< 1%
Priority 3	38.53	31%
Priority 4	0.00	0%
Priority 5	0.00	0%
Priority 6	0.00	0%
<b>Total Acres</b>	<b>39.64</b>	<b>32%</b>

MEASURES (continued)	Resource Acres <sup>a</sup>	% of project
<b>C5: Surface Water Protection</b>		
Priority 1	0.00	0%
Priority 2	63.83	51%
Priority 3	0.06	< 1%
Priority 4	58.82	47%
Priority 5	0.00	0%
Priority 6	0.00	0%
Priority 7	0.00	0%
<b>Total Acres</b>	<b>122.71</b>	<b>98%</b>
<b>C7: Fragile Coastal Resources</b>		
Fragile Coastal Uplands	0.00	0%
Imperiled Coastal Lakes	0.00	0%
Coastal Wetlands	0.00	0%
<b>Total Acres</b>	<b>0.00</b>	<b>0%</b>
<b>C8: Functional Wetlands</b>		
Priority 1	0.00	0%
Priority 2	1.00	< 1%
Priority 3	9.79	8%
Priority 4	0.00	0%
Priority 5	0.00	0%
Priority 6	0.00	0%
<b>Total Acres</b>	<b>10.79</b>	<b>9%</b>
<b>D3: Aquifer Recharge</b>		
Priority 1	0.00	0%
Priority 2	0.00	0%
Priority 3	0.00	0%
Priority 4	0.00	0%
Priority 5	0.00	0%
Priority 6	121.48	97%
<b>Total Acres</b>	<b>121.48</b>	<b>97%</b>
<b>E2: Recreational Trails (miles)</b>		
<small>(prioritized trail opportunities from Office of Greenways and Trails &amp; Univ. Florida)</small>		
Land Trail Priorities	0.0	
Land Trail Opportunities	0.0	
<b>Total Miles</b>	<b>0.0</b>	
<b>F2: Arch. &amp; Historical Sites (number)</b>		
		<b>2 sites</b>
<b>G1: Sustainable Forestry</b>		
Priority 1	0.00	0%
Priority 2	0.00	0%
Priority 3	64.88	52%
Priority 4	0.00	0%
Priority 5 - Potential Pinelands	0.00	0%
<b>Total Acres</b>	<b>64.88</b>	<b>52%</b>
<b>G3: Forestland for Recharge</b>		
	0.00	0%

<sup>a</sup>Acres of each resource in the project and percentage of project represented by each resource are listed except where noted. This analysis converts site boundary into pixels, which causes slight differences from GIS acres; this effect is most noticeable on small sites.