

ITEM 13:

Vote on whether to amend the Annutteliga Hammock Florida Forever Project Boundary to add two parcels totaling approximately 48.3 acres in Hernando County with a tax assessed market value of \$620,220.

LOCATION:

Hernando County

DSL STAFF REMARKS:

The Mente 48 LLC Property amendment proposed by the Fish and Wildlife Conservation Commission (FWC), adds two parcels in Hernando County totaling approximately 48.3 acres to the Annutteliga Hammock Florida Forever project owned by Mente 48 LLC. The two parcels have a combined tax assessed value of \$620,220.

The two parcels adjacent to the Chassahowitzka Wildlife Management Area (CWMA) and are proposed for fee simple acquisition. The landowner has been contacted and is a willing seller. The FWC has confirmed that the parcels would be managed as part of the CWMA. The parcels located along US 19 are adjacent to the northeast corner of the CWMA. They contain sandhill and flatwood habitat with basin and depression marsh. The property would improve management of the CWMA by preventing future adjacent property management conflicts, benefit wildlife and habitat protection, expand recreational opportunities and protect water quality and water quantity.

The proposal meets the criteria to be submitted as a boundary amendment. The parcels total less than 1,000 acres, have a tax assessed value of less than \$2 million, and are less than 10% of the size of the overall project to which it is being added. The proposal area should be designated as essential.

Project History:

The Annutteliga Hammock Project in Citrus and Hernando Counties was approved on the CARL list in 1995. The project conserves the remaining fragments of the Brooksville Ridge longleaf pine sandhill forest between the Withlacoochee State Forest and CWMA. The project protects habitat for black bear and the sandhill community and provides for recreation in the sandhill and upland hardwood forest protected in the region. Twenty archaeological sites provide evidence of the long history of Native American occupation in the area.

The Annutteliga Hammock project includes over 19,728 acres with 8,747 acres remaining and is ranked number 11 in the Partnerships and Regional Incentives category on the 2020 Florida Forever Priority List. The tax assessed value for the remaining acres to be acquired in this project per property appraiser information (2018) is \$ \$64,468,128.

FNAI Review:

According to the Florida Natural Areas Inventory (FNAI), 100% of the site contributes to Ecological Greenways, Surface Water Protection, and Aquifer Recharge. The site also contributes to Under-represented communities for Sandhill (63%) and scores 84% for Sustainable Forestry.

STAFF RECOMMENDATION:

Vote on the proposed boundary amendment.

ARC RECOMMENDATION:

Project	DHR	FFS	Lynetta Griner	FWC	Bill Palmer	Elva Peppers	DEP	Selected
Annutteliga Hammock: Mente 48 LLC Property								



1018 Thomasville Road
Suite 200-C
Tallahassee, FL 32303
850-224-8207
[Florida Natural Areas Inventory](#)

To: Deborah Burr, DEP/OES
From: Dale R. Jackson, FNAI
Date: November 9, 2020
Subject: Proposed Boundary Modification to Florida Forever BOT Project: Annutteliga Hammock – Mente 48 LLC Property (Nunag Parcels), Hernando County

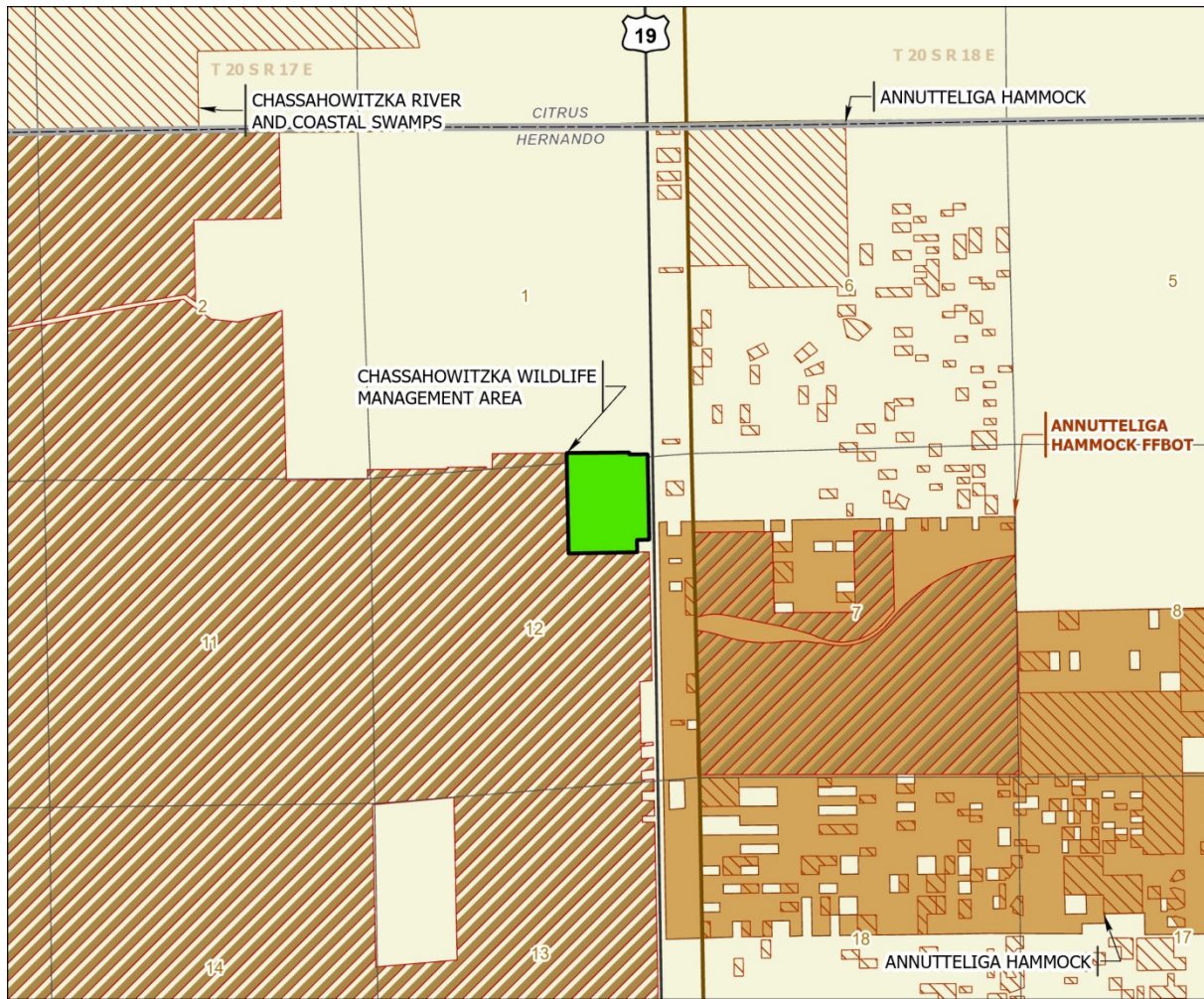
The Annutteliga Hammock FFBOT project, situated on the Brooksville Ridge in west-central Florida (Citrus and Hernando counties), aims to conserve remaining fragments of forests between the Withlacoochee State Forest and Chassahowitzka Wildlife Management Area (WMA). These include large tracts of sandhill, upland hardwood forests characterized by typically more northern flora, habitat for Florida black bear and other rare biota, and significant archeological sites. Potential to support nature-based recreation is high. The entire area is threatened by limerock mining and residential development that includes golf courses. Most unacquired portions of the project occupy uplands east of the WMA.

The proposed addition is a nearly square tract of 48 acres (48.18 GIS acres) bordering the western edge of US-19. The northeastern corner of Chassahowitzka WMA borders the tract's western and southern boundaries, and the addition is proposed for incorporation into the WMA (helping to consolidate boundaries to assist management). The Annutteliga Hammock FFBOT project, including both acquired and unacquired parcels, is situated on the opposite (eastern) side of US-19 just southeast of the proposed addition. Numerous other disjunct parcels (both large and small) of the Southwest Florida Water Management District's Annutteliga Hammock unit are scattered both north and south of the FFBOT project. The property is proposed for fee-simple acquisition.

The site is undeveloped but for a winding woods road. It is nearly fully forested in native vegetation, most of which is sandhill (63% of site) but with some flatwoods (21%) in the southern section. What appears to be a high quality 1-2-acre depression marsh is visible along the central-western edge of the site.





The FNAI database contains only one record of rare species on site – the Florida black bear (*Ursus americanus floridanus*, G5T4/S4, N, N), based on its being considered abundant regionally by the FWC. However, occurrences of the gopher tortoise (*Gopherus polyphemus*, G3/S3, N, T) and pine pinweed (*Lechea divaricata*, G2/S2, N, E) are mapped on the adjacent WMA and are likely to extend onto it (field confirmation needed). Being within a sandhill, the depression marsh has a high probability of serving as a breeding site for the gopher frog (*Lithobates capito*) and possibly striped newt (*Notophthalmus perstriatus*). Other sandhill species such as the Florida pinesnake, eastern indigo snake, southern hognose snake, southeastern American kestrel, and Florida mouse may find habitat here as well.

The Florida Forever Measures Evaluation (FFME) at the end of this memo is based on the Florida Forever Conservation Needs Assessment developed by FNAI. The data used in that analysis represent a standardized, statewide perspective of natural community distributions based primarily on data from the Cooperative Land Cover Map. Most to all of the proposed addition contributes to Surface Water Protection, Aquifer Recharge, Ecological Greenways, and Under-represented Natural Communities (63% sandhill, 21% mesic/wet flatwoods), with a high potential to support Sustainable Forestry.



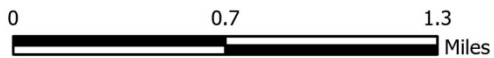
ANNUTTELIGA HAMMOCK PROPOSED ADDITION (MENTE 48 LLC)

HERNANDO COUNTY

-  Proposed Florida Forever BOT Project Addition
-  Florida Forever BOT Projects
-  State Owned Lands
-  Other Conservation Lands

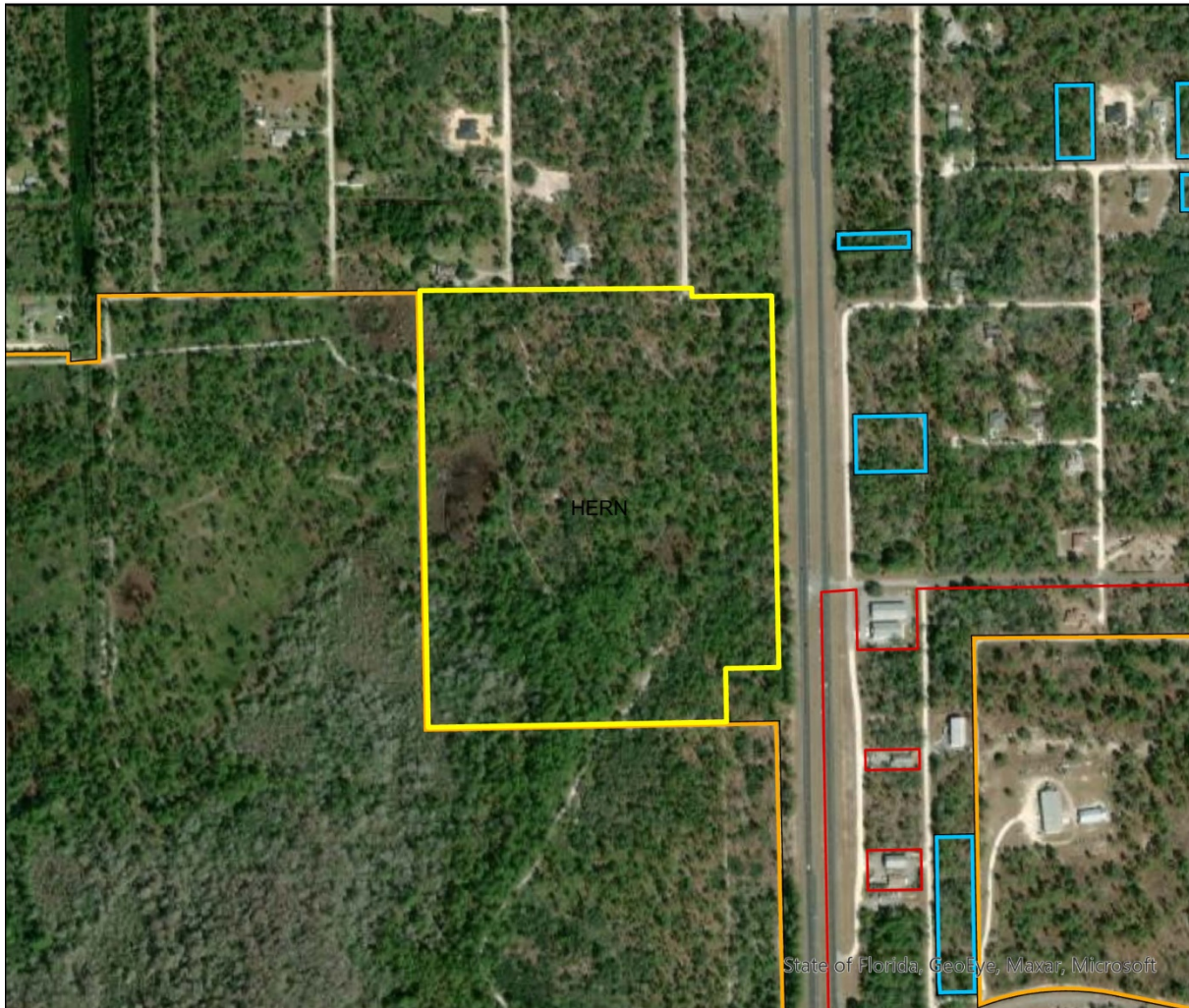


NOVEMBER 2020



Annutteliga Hammock Proposed Addition (Mente 48 LLC)

FLORIDA FOREVER BOARD OF TRUSTEES PROJECT PROPOSAL BOUNDARY AS OF NOVEMBER 2020

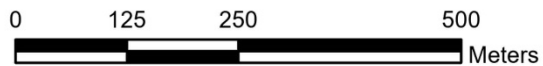
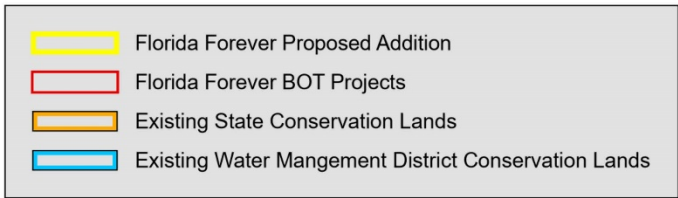


Map Produced by: N. Pasco, November 2020

Background: World Imagery Resolution = 0.3 meter



1018 Thomasville Road
Suite 200-C
Tallahassee, Florida 32303
850-224-8207
fax 850-681-9364
www.fnai.org



Annutteliga Hammock Addition: Florida Forever Measure Evaluation 20201102

GIS ACRES = 48.18

MEASURES	Resource Acres ^a	% of project
B1: Strategic Habitat Conservation Areas		
Priority 1	0.00	0%
Priority 2	25.85	54%
Priority 3	0.00	0%
Priority 4	0.00	0%
Priority 5	0.00	0%
Total Acres	25.85	54%
B2: FNAI Habitat Conservation Priorities		
Priority 1	0.00	0%
Priority 2	0.00	0%
Priority 3	4.11	9%
Priority 4	44.20	91%
Priority 5	0.00	0%
Priority 6	0.00	0%
Total Acres	48.31	100%
B3: Ecological Greenways		
Priority 1	0.00	0%
Priority 2	48.31	100%
Priority 3	0.00	0%
Priority 4	0.00	0%
Priority 5	0.00	0%
Priority 6	0.00	0%
Total Acres	48.31	100%
B4: Under-represented Natural Communities		
Upland Glade (G1)	0.00	0%
Pine Rockland (G1)	0.00	0%
Scrub and Scrubby Flatwoods (G2)	0.00	0%
Rockland Hammock (G2)	0.00	0%
Dry Prairie (G2)	0.00	0%
Seepage Slope (G2)	0.00	0%
Sandhill (G3)	30.52	63%
Sandhill Upland Lake (G3)	0.00	0%
Upland Pine (G3)	0.00	0%
Mesic/Wet Flatwoods (G4)	10.01	21%
Upland Hardwood Forest (G5)	0.00	0%
Total Acres	40.53	84%
B6: Occurrences of FNAI Tracked Species		
G1	0	
G2	0	
G3	0	
G4	1	
G5	0	
Total	1	
C4: Natural Floodplain Function		
Priority 1	0.00	0%
Priority 2	6.78	14%
Priority 3	1.89	4%
Priority 4	1.00	2%
Priority 5	0.00	0%
Priority 6	0.00	0%
Total Acres	9.67	20%

MEASURES (continued)	Resource Acres ^a	% of project
C5: Surface Water Protection		
Priority 1	0.00	0%
Priority 2	0.00	0%
Priority 3	0.00	0%
Priority 4	0.00	0%
Priority 5	11.01	23%
Priority 6	37.25	77%
Priority 7	0.00	0%
Total Acres	48.26	100%
C7: Fragile Coastal Resources		
Fragile Coastal Uplands	0.00	0%
Imperiled Coastal Lakes	0.00	0%
Coastal Wetlands	0.00	0%
Total Acres	0.00	0%
C8: Functional Wetlands		
Priority 1	0.00	0%
Priority 2	5.50	11%
Priority 3	1.39	3%
Priority 4	0.44	< 1%
Priority 5	0.00	0%
Priority 6	0.00	0%
Total Acres	7.34	15%
D3: Aquifer Recharge		
Priority 1	47.20	98%
Priority 2	0.00	0%
Priority 3	1.11	2%
Priority 4	0.00	0%
Priority 5	0.00	0%
Priority 6	0.00	0%
Total Acres	48.31	100%
E2: Recreational Trails (miles)		
<small>(prioritized trail opportunities from Office of Greenways and Trails & Univ. Florida)</small>		
Land Trail Priorities	0.0	
Land Trail Opportunities	0.0	
Total Miles	0.0	
F2: Arch. & Historical Sites (number)		
0 sites		
G1: Sustainable Forestry		
Priority 1	0.00	0%
Priority 2	0.00	0%
Priority 3	40.42	84%
Priority 4	0.00	0%
Priority 5 - Potential Pinelands	0.00	0%
Total Acres	40.42	84%
G3: Forestland for Recharge		
	40.42	84%

^aAcres of each resource in the project and percentage of project represented by each resource are listed except where noted. This analysis converts site boundary into pixels, which causes slight differences from GIS acres; this effect is most noticeable on small sites.