



Participant Instructions

Download the Application Form and the Application Instructions from:
<https://floridadep.gov/Grants>

Conference Call Number: 1-888-585-9008

Participant conference room number 469-038-506



For those on Skype, please call in for audio. Make sure to mute your phone.

Skype Link: <https://meet.lync.com/floridadep/linda.reeves/PWVCZCCN>



Land and Water Conservation 2019-2020 Application Cycle Workshop and Webinar



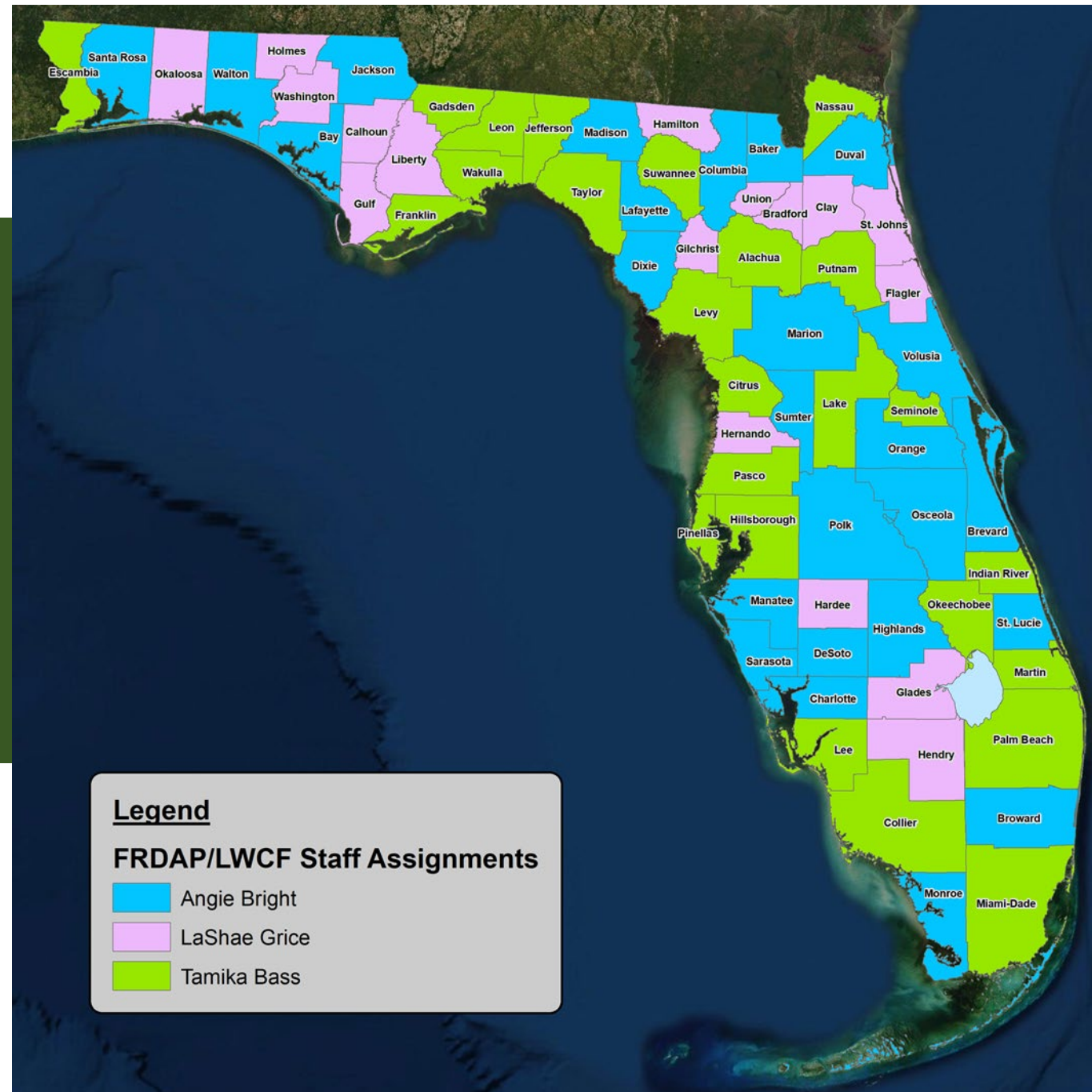
Agenda

- Introductions
- Preparing the Application Form
- Project Evaluation Criteria
- Application Supporting Documentation
- Wrap Up





LWCF Grant Managers by County





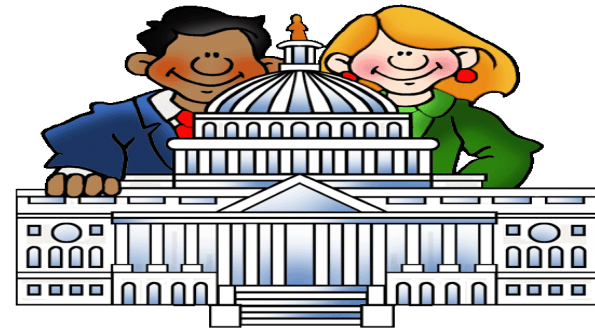
Program Overview and Purpose





Eligible Applicants

- Counties
- Municipalities
- An independent special district of the State of Florida with legal responsibility for providing outdoor recreational sites and facilities for use and benefit of the general public.





Ineligible Projects

- No Site Control of the project boundary
- Board of Trustees State Owned Leased Property
- Project Site is not a Viable Recreation Area
- Support facilities more than 50% of the total project cost
- A project site would not be considered practical if it has documented and unresolved environmental violations
- Duplicate Projects or Overlapping Projects





Application Cycle Dates

LWCF Application Cycle

January 13th – 31st 2020

Submit 3 hard copies of the

Application to:

Department of Environment Protection

Land and Recreation Grants Section

3900 Commonwealth Blvd, MS 585

Tallahassee, FL 32399-3000

Post marked by the deadline



Deficiencies

- Deficiency Documentation:** The applicant may retain eligibility by submitting documentation missing from the application, such as: proof that applicant had site control by the submission period deadline, evaluation criteria, cost estimate, site development plan, or survey.
- This documentation must be submitted within 15 working days from date of deficiency notification.



General Information

Part I

- Applicant
- Project
- Financial
- Project Elements (Work Plan)

Application pages 1-9





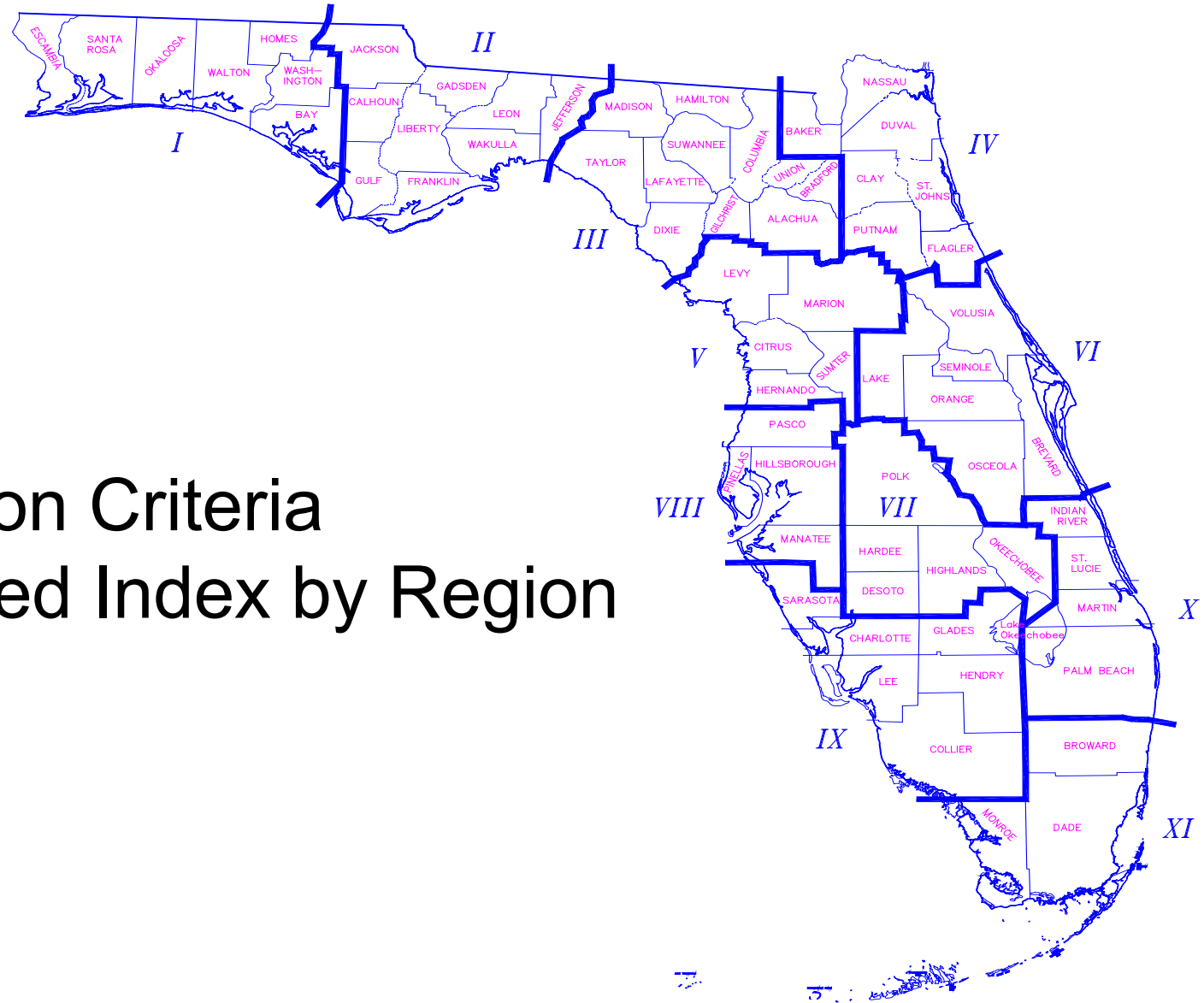
Evaluation Criteria

Part II

- General Criteria
- Development Criteria
- Acquisition Criteria

Application pages 10-25





Evaluation Criteria

2008 Relative Need Index by Region



General Evaluation Criteria

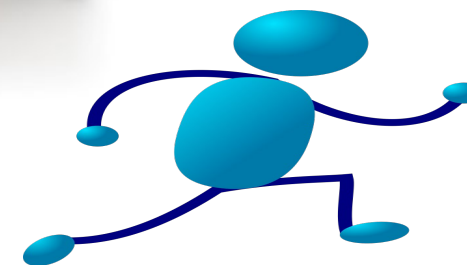
Public Participation





General Evaluation Criteria

- Linear Park
- Preservation Purposes
- Operation and Maintenance





Part II – Evaluation Criteria by Project Type

- Development Criteria
- Acquisition Criteria





Development Criteria

COMPLETE ONLY FOR DEVELOPMENT PROJECTS

- NEW DEVELOPMENT**
- NEW FACILITIES OR OPPORTUNITIES**
- RENOVATION OF EXISTING FACILITIES**
- SUPPORT FACILITIES**
- ACCESS TO WATER RESOURCES**
- USE OF WATER RESOURCES**
- INFRASTRUCTURE ASSESSMENT OF LOCAL GOVERNMENT RECREATION AND PARK DEPARTMENT FACILITY NEEDS IN THE STATE OF FLORIDA**



Population Density Criteria

Population Density 1 – Population Under 10,000	Rank 1 Rank 2	Construction Renovation
Population Density 2 – Population 10,000 to 24,999	Rank 1 Rank 2	Renovation Construction
Population Density 3 – Population 25,000 to 49,999	Rank 1 Rank 2	Construction Renovation
Population Density 4 – Population 50,000 to 99,999	Rank 1 Rank 2	Construction Renovation
Population Density 5 – Population 100,000 and Over	Rank 1 Rank 2	Renovation Construction



Acquisition Criteria

COMPLETE ONLY FOR ACQUISITION PROJECTS

- FLORIDA NATURAL AREAS INVENTORY
- WATER FRONTAGE
- INFRASTRUCTURE ASSESSMENT OF LOCAL GOVERNMENT RECREATION AND PARK DEPARTMENT FACILITY NEEDS IN THE STATE OF FLORIDA
- NEEDED RECREATIONAL ACREAGE
- CAPITAL IMPROVEMENT PLAN (PART A & B)



Part III – Supporting Documentation





SCORP Documentation



2019 STATEWIDE COMPREHENSIVE OUTDOOR RECREATION PLAN



Public Participation





Preservation Purpose





Operation and Maintenance



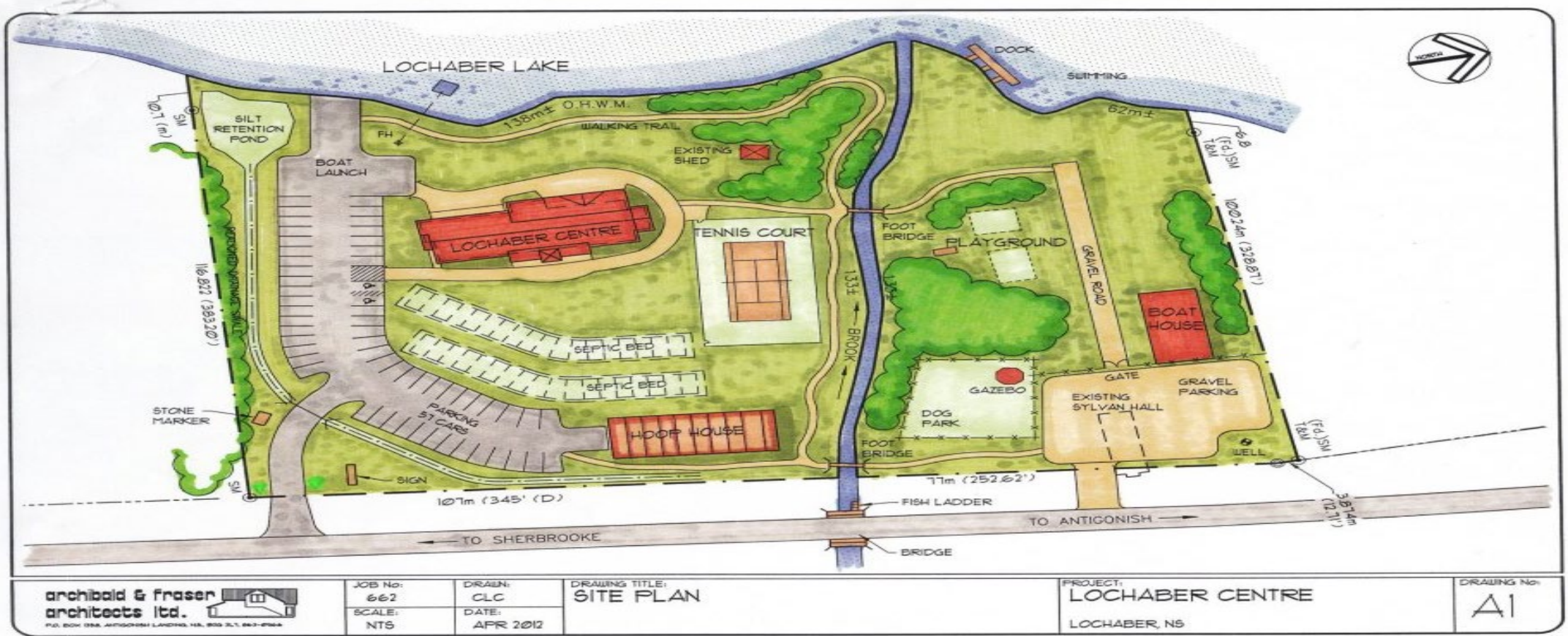


COMPLETE ONLY FOR ACQUISITION PROJECTS

- **RESOURCE PROTECTION (FNAI)**
- **NEEDED ACREAGE**



Conceptual Site Plan

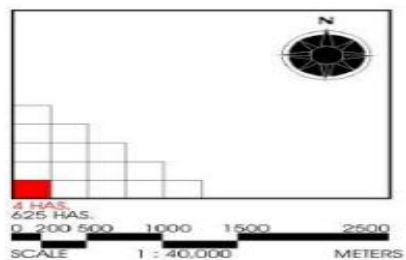




Boundary Map

LEGEND:

- HIGH DENSITY RESIDENTIAL / MIXED-USE ZONE (R-3/MXD)
- MEDIUM INTENSITY COMMERCIAL / MIXED-USE ZONE (C-2/ MXD)
- HIGH INTENSITY COMMERCIAL / MIXED-USE ZONE (C-3/ MXD)
- LIGHT INTENSITY INDUSTRIAL ZONE (I-1)
- GENERAL INSTITUTIONAL ZONE (INS-G)
- UNIVERSITY CLUSTER ZONE (INS-U)
- GENERAL PUBLIC OPEN SPACE ZONE (POS-GEN)
- UTILITY ZONE (POS-GEN)
- UTILITY ZONE (UFTL)
- WATER ZONE (WTR)
- CITY BOUNDARY
- CONGRESSIONAL DISTRICT BOUNDARY
- LRT1
- LRT2
- RAILWAYS





Photographs





Location Map and Directions

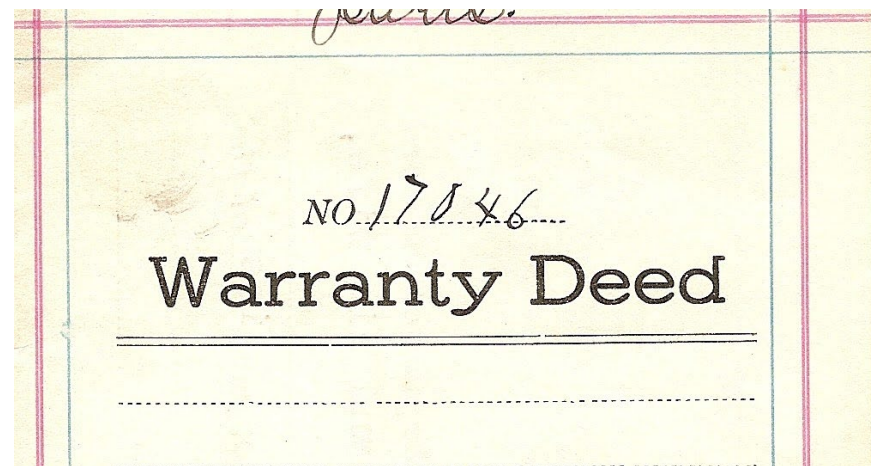


Location,
Location,
Location



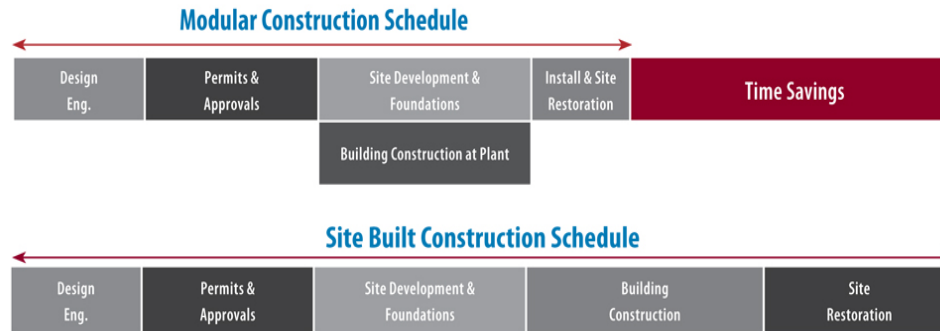


Site Control





Project Narrative - Timeline – Assessed Value



Land tax
Assessment notice 2018–19
 for land owned as at midnight 30 June 2018
Issued under the Land Tax Act 2010 and Taxation Administration Act 2001

Issue date	26 July 2018
Payment reference	400000022519
Client number	1114941
Amount payable (for this assessment)	\$37,500.00
Due date	24 October 2018



Federal Forms



READ INSTRUCTIONS FIRST:

LWCF Proposal Description & Environmental Screening Form
(PD-ESF)

SF 424A Budget Information – Non Construction Programs

OR

SF 424C Budget Information – Construction Programs

<https://www.nps.gov/subjects/lwcf/lwcf-forms.htm>



Resource Information

- Statewide Comprehensive Outdoor Recreation Plan (SCORP)
<https://floridadep.gov/parks/parks-office-park-planning> (850) 245-3051
- Bureau of Appraisal (850) 245-3076
- Florida Natural Areas Inventory
<https://www.fnai.org> (850) 224-8207
- State Historic Preservation Office (850) 245-6333
- NEPA List of Federal Agency Categorical Exclusions for NPS.
https://ceq.doe.gov/docs/nepa-practice/CEQ_CE_List_2018-12-14
<https://ceq.doe.gov/nepa-practice/categorical-exclusions.html>



Contact Information

Main Phone Line: (850) 245-2501

FRDAP and LWCF Community Assistance Consultants:

- Tamika Bass – Tamika.Bass@floridadep.gov
- Angie Bright – Angie.Bright@floridadep.gov
- LaShae Grice – LaShae.Grice@floridadep.gov (FRDAP)

Land & Recreation Grants Management and Legal Counsel:

- Linda Reeves, OMC Manager – Linda.Reeves@floridadep.gov
- Rebecca Wood, Program Manager – Rebecca.Wood@floridadep.gov
- Lois LaSeur, Program Attorney – Lois.LaSeur@floridadep.gov



Wrap Up

LWCF Cycle:

January 13th - 31th 2020

Submit 3 hard copies of the

Application to:

Department of Environment Protection

Land and Recreation Grants Section

3900 Commonwealth Blvd, MS 585

Tallahassee, FL 32399-3000

Posted marked by the deadline



This Photo by Business 2 Community