

**STATE OF FLORIDA
MANUFACTURED GAS PLANT
AKA: COAL GASIFICATION PLANT
AKA: TOWN GAS PLANT
ASSESSMENT AND REMEDIATION STATUS**



**Prepared By:
Florida Department of Environmental Protection
Bob Martinez Center
2600 Blair Stone Road
Tallahassee, Florida 32399-2400**

**Division of Waste Management
Waste Clean-up Section
DoD, Brownfields and CERCLA Programs**

**A. James McCarthy Jr., P.G
Professional Geologist II
February 3, 2019**

STATUS of FLORIDA MANUFACTURED GAS PLANT SITES
February 2019



State of Florida

Ron Desantis
Governor

Jeanette Nunez
Lt. Governor

Noah Valenstein
FDEP Secretary

STATUS of FLORIDA MANUFACTURED GAS PLANT SITES
February 2019

Introduction



Harry Leith-Ross (1886 - 1973, New Hope, Pennsylvania)

"Gas Works"

Watercolor on paper

20 x 26 inches

Signed at lower right

Private collection, Bucks County, Pennsylvania

In September 1985, the Florida Department of Environmental Regulation, now FDEP, Site Screening Superfund subsection (CERCLA Group) was tasked by then Bureau Chief Bill Buzick to identify and conduct Preliminary Assessments (PAs) at Florida's known and unknown manufactured gas plant (MGP) sites. A legacy of the "Gas Light" era, these plants have also been referred to as "coal gas", "coal gasification plants" or "Town Gas Plants". This request was spurred by the discovery of coal tar contamination at the People's Gas facility in North Miami Beach. Through a heating process, MPGs used coal (or coke); steam and a gasification agent (naphtha, Bunker C fuel oil, diesel fuel No. 6) to produce a combustible gas (hydrogen & carbon monoxide) for City street gas lights, home lighting and stoves. These plants were often municipally owned. However, they were often franchised out to private utilities. These plants operated in Florida from the late 1880's to the late 1950's. Most MGP operations ceased in Florida by 1959 with the completion of the natural gas transmission lines. Waste products from MGP operations included tars, aqueous ammoniacal liquors, cyanide "Prussian Blue" and heavy metals. Coal tar contains a number of volatile organic compounds including benzene, ethyl benzene, toluene & xylene (BTEX) and polycyclic aromatic hydrocarbons (PAHs) [i.e. benzo [a] pyrene]. Housekeeping practices at the MPGs were very careless. Tar and other waste products were often discharged directly to the ground and/or into nearby streams. Many of the storage tanks (tar water separators, pits, and Gasometers) were prone to leaking. As a result, soil, surface water/sediment and groundwater contamination was fairly common at the MPGs.

STATUS of FLORIDA MANUFACTURED GAS PLANT SITES
February 2019

Through the use of the EPA's Radian Corp. 1984 Report on Survey of Tar Disposal, Locations of Town Gas Producers, Brown's Directories of American Gas Companies (1887-1944, 1950, 1959 & 1960), Sanborn Fire Insurance Maps, library research and just plain old-fashioned detective work, the FDER/FDEP CERCLA Group initially identified 24 locations of Florida MGPs. The list ultimately grew to 29 MGP and MGP Dump sites. However, two of the suspected MGP sites turned out to be a transfer station (Deland Gas Systems) and the other produced only Hasche gas (Deland Hasche Gas Plant) with no detected MGP impacts. Five of the MGP sites are currently under EPA Region 4 lead as Superfund Alternative Sites (i.e. West Florida Natural Gas, Cascade Park Gasification Plant/Cascade Landfill, Orlando Gasification Plant, Sanford Gasification Plant & St. Augustine Gas Plant). The first list of Florida MGP locations and status was generated in January 1990. This list included the location, owner and status of assessment and remediation. This list was subsequently updated in October 1990, September 2003, February 2004, May 2009 and March 2013. Information on this list was derived from the Departments Oculus and ERIC databases, FDEP's District offices, EPA Region 4, the EPA Superfund Information Systems and Superfund NPL/ Superfund Alternative site websites. An explanation of the Columns (from left to right) in the Tables follows:

- **Column 1 MGP Address, Off-site MGP Impacted Address and Current Activities/Business** – includes street number, City and what business and/or activities are currently on site for the former MGP and any off-site impacted properties(via Google Maps/Street View).
- **Column 2 District** – FDEP District in which MGP site exists.
- **Column 3 EPA ID #, FDEP ID #s and MDERM-RER (Miami-Dade Co. Sites) Folio#** - EPA ID # is for CERCLA Superfund related work. FDEP ID #s are used on the Oculus/ERIC databases. MGP sites in Miami-Dade County are identified by MDERM-RER Folio #s.
- **Column 4 Gas Type & Years of Operation** - Using documents from Browns Annual Directories of American Gas Companies (and site file). Also, lists what type of gas manufacturing process the MGPs used, (i.e., Coal Carbonization, Water Gas, Carbureted Water Gas and/or Oil Gas). Also, the years the MGP was in operation manufacturing gas using one of the four processes.
- **Column 5 CERCLA Assessments (PAs, APAs, SIs, etc.)** List the month/year and type of CERCLA directed assessment reports, whether they were conducted by the FDEP CERCLA Group or EPA Region 4.
- **Column 6: Comments: Re: EPA. County and/or State Enforcement, Activities, Major Documents and Milestones.** Arranged chronologically and commonly grouped in decades for MGPs with a long site history. Please note this column does not include the various FDEP, EPA or local government review comments to PRPs and RPs on the various draft Workplans, Reports, etc.

Please refer to the Key to Abbreviations and Acronyms below for definitions of the abbreviations. The reader is encouraged to review the site files on FDEP's Oculus™ /ERIC databases or County websites (Broward, Miami- Dade) for more detailed information about the MGPs.

Contributors:

Alex Webster, P.G. and Sally Cooley-FDEP Northwest District

Missy Palcic – FDEP Northeast District

Craig D. Parke, P.G., - FDEP Northeast District

Yanisa Angulo, P.E, M.E, CPM – FDEP Southwest District

Tracy Jewsbury, P.E.- FDEP Central District

Roger Sussko, P.G. - FDEP Central District.

Diane Pupa – FDEP Southeast District

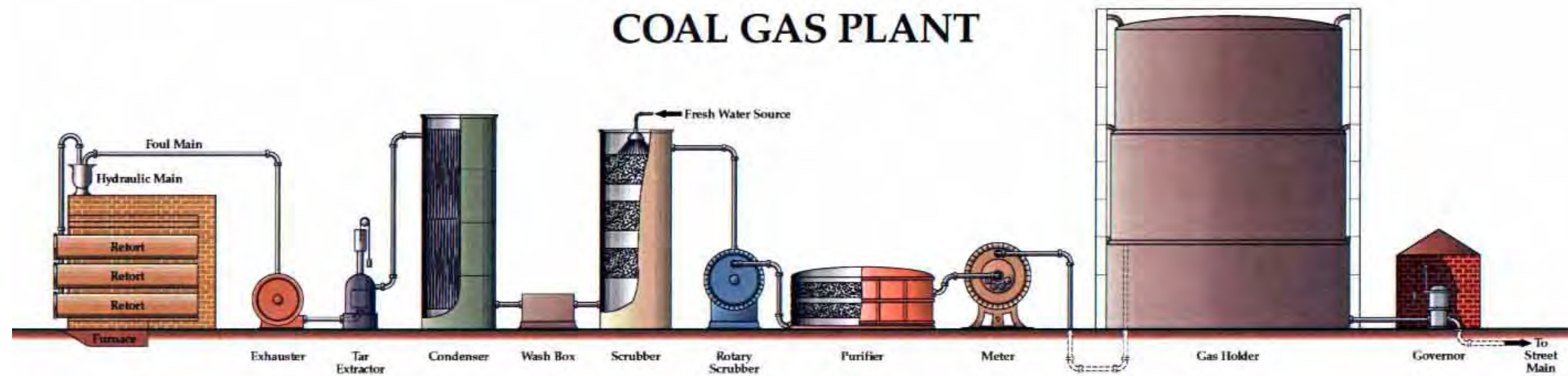
Gary Maier – FDEP South District

Tom Kux, P.G. MDERM-RER

David S. Vanlandingham, P.E. Broward Co. Environmental Protection & Growth Mgt. Dept.

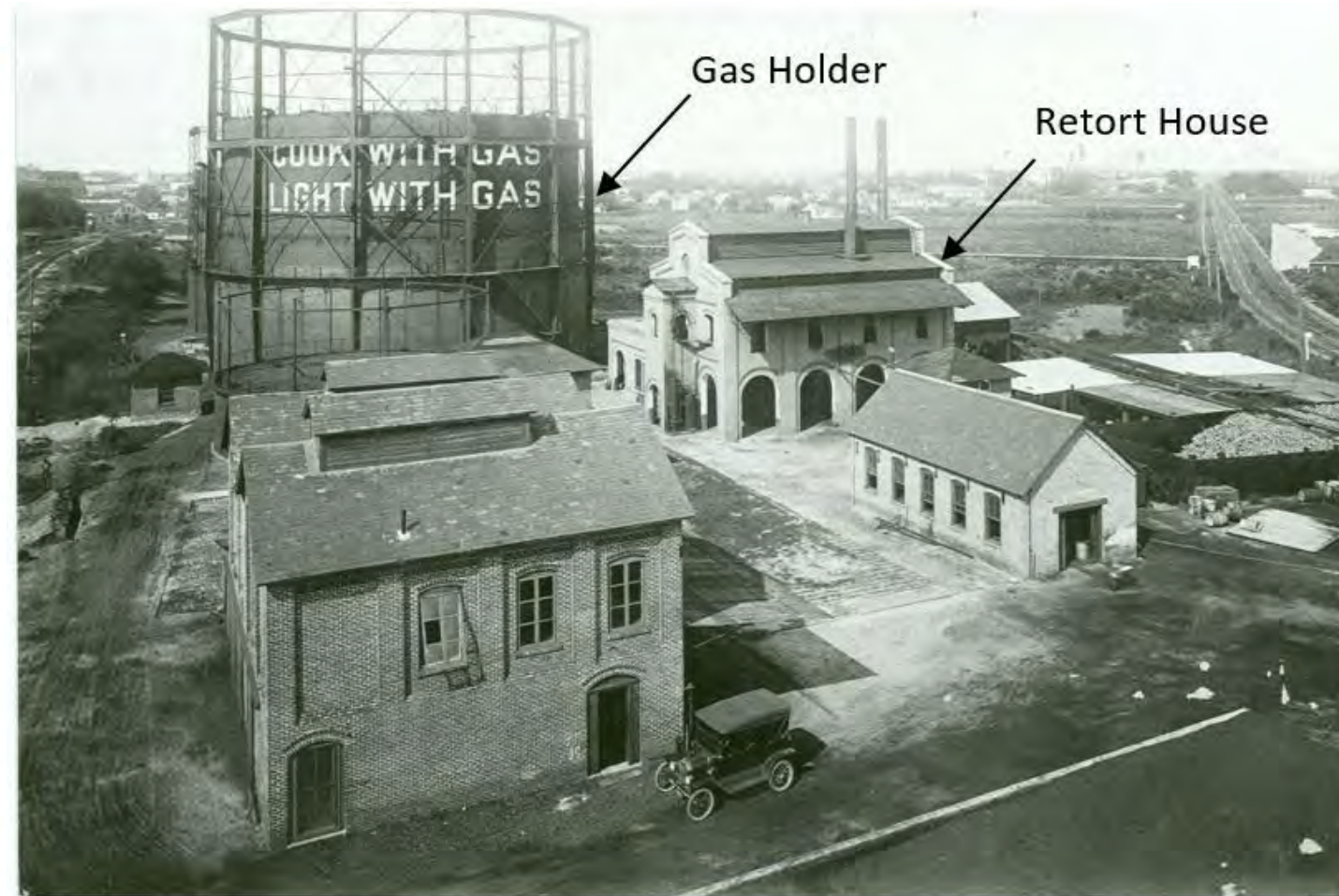
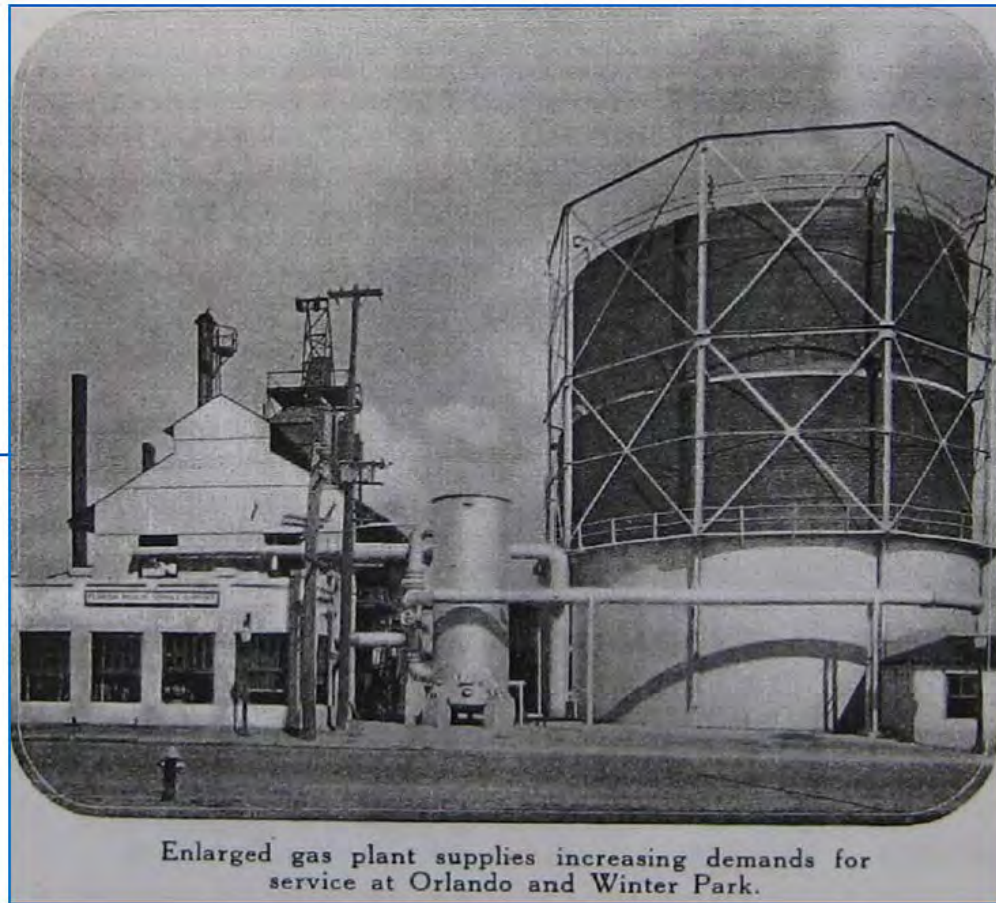
Allen W. Hatheway, Ph.D, P.G – International Consultant

STATUS of FLORIDA MANUFACTURED GAS PLANT SITES
February 2019



Courtesy: Dr. A.W. Hatheway's Former Manufactured Gas Plant web site

STATUS of FLORIDA MANUFACTURED GAS PLANT SITES
February 2019



Orlando and Tampa MGPs

**STATUS of FLORIDA MANUFACTURED GAS PLANT SITES
February 2019**

MGP Address, Off-site MGP Impacted Property Address & Current Activities/Businesses	District	EPA ID# FDEP Site ID # MDERM-RER Id # Folio #	Gas Type & Years of MGP Operation	CERCLA Assessments (PAs, APA's, SIs, etc.)	Comments: Re: EPA, County and/or State Enforcement, Activities, Major Documents and Milestones.
<p>Gainesville Gas Plant Aka: Former Poole Roofing Co. MGP address 710 S.E. 2nd St. Gainesville, FL 32601-7015</p> <p>Former CSX Property-Depot Park 874 S.E 4th Street, Gainesville FL 32601</p> <p>Currently: Former MGP: As of February 2017, an Artist Workshop & vacant land (Fmr. Hortonsphere & Holder Tanks). Off-site former CSX MGP impacted property: Depot Park including pond areas, walking trails, play area, Cade Museum and a nature preserve; Also, a restaurant, bar and general store along SE Depot Ave.</p>	NED	<p>FLD981931967 COM_69589 BF010001000 BF010001001 (Fmr. Poole Roofing) BF010001002 (Fmr. CSX) 8518101</p>	<p>C, W, CWG, O 1889 - 1952</p>	<p>PA-12/1987 PAR-9/1989 SSI-4/1990 SSI Addendum 11/1990 Level B SIP 6/1995 ESI-12/1999</p> <p>EPA Recommendation: OCA, State Lead Cleanup</p>	<p>State lead through FDEP NED. Most of MGP located on Poole Roofing. MGP migration impacts to former CSX Yard. Off-site portion of site was Sprout Pilot Brownfield project.</p> <p>1980 to 1989 – December 1987 FDEP completes CERCLA PA. March 1988 PCAP. October 1988 PCAR.</p> <p>1990 to 1999 - April 1990 Final CERCLA SI report using RP generated (Desk-top) data. September 1992-CO Conditional approval of contamination assessment. 1993 Supplemental CAR. December 1994 RAP.</p> <p>2000 to March 2013 – 2000 – RAP for former CSX Property 2001-2002 BSRAs signed. March 2008 RAP Source Removal Plan for Phase 1 (Poole Roofing & CSXT Parcel) submitted. December 2008 Phase 1 RAP Addendum approved. July 2010 Phase I Source Removal completed. February 2009 Phase 2 (CSXT property) RAP submitted. 2009-2010 Phase 2, dewatering, water treatment and SL removal. More than 147,000 tons of MGP contaminated SL removed to an approved landfill and over 40 million gallons of contaminated GW treated at former CSX property. Excavation to 50 feet BLS. As part of the petroleum program, 121,220 tonnages of SL were removed in late 2009 and early 2010. August 2012-Source Removal Report estimates 90 – 95% of contaminant mass removed under Phase II.</p> <p>Update: December 2015 to December 2016 PARM Reports (Y1 Quarters 1-4) to Year 3 Quarter 2. July 2017 RAP MOD. Depot Park completed in 2016. April 2017 RAP Approval Order issued by FDEP. July 2018 PARM report 5th Event. September 2018 PARM report 6th Event.</p>
<p>Main Street MGP/Parkview Inn (Former Citizens MGP) Aka: EHT/Confederate Park 901 North Main St. (MGP)/956 Hubbard Street (Confederate Park) Jacksonville, FL 32202/32206</p> <p>Currently: Former MGP - Parkview Inn now mostly demolished with remnants of the parking garage associated with former hotel.</p> <p>Off-site MGP impacted area: Confederate Park with Hogan Creek, a pond and monument</p>	NED	<p>FLSFN0407139 COM_152721 COM_185118 9801051 BF160001017</p>	<p>Unk Likely CWG Late 1800's to early 1900's</p>	<p>PSA 3/2000 PA-4/2000 SI-12/2001</p> <p>EPA Recommendation: OCA, State Lead Cleanup</p>	<p>Currently State lead through FDEP NED District. State had earlier requested EPA action. COJ and FDEP NED Neg. CO. for Confederate Park. Possible Brownfield site. Coal tar residuals found under old hotel and adjacent Confederate Park, just north of former MGP. Former Citizens MGP was located on abandoned Park View Inn.</p> <p>1990 to 1999. July 1993 EHT Corp CAR. June 1996 Preliminary RAP Activity Report for EHT Corp. March 1997 RAPA for EHT Corp. March 1999 PCAP for Park View Inn received.</p> <p>2000 to 2009 – January 2000 PCAR for Park View Inn received by FDEP. April 2000 FDEP completes CERCLA PA. February 2001 PCAP Addendum for Park View Inn. May 2001 CAP for Park View Inn. June 2001 SI WP for Main Street MGP completed by FDEP State contractor. July 2001 CAR for Park View Inn received. September 2001 PCAR for Confederate Park received. December 2001 Final CERCLA SI report using RP generated (Desk-top) data. December 2002 CAP for Confederate Park received. July 2007 Limited CAR for Park View Inn received. May 2008 Revised SAR for Park View Inn received by FDEP. Little cooperation with Park View Inn PRPs. August 2008 CAR received for Confederate Park. Coal tar contamination found in former footprint of Hogan Creek on COJ owned Confederate Park in 2001 & 2008. State requested EPA evaluate for taking on as an EPA Superfund site. September 2009 FDEP notifies PRP (Park Group Inv.) of further EPA action. October 2009 COJ submits CAR Addendum No. 1 for Confederate Park to FDEP. COJ completed 2nd phase of contamination assessment on Confederate Park.</p>

**STATUS of FLORIDA MANUFACTURED GAS PLANT SITES
February 2019**

MGP Address, Off-site MGP Impacted Property Address & Current Activities/Businesses	District	EPA ID# FDEP Site ID # MDERM-RER Id # Folio #	Gas Type & Years of MGP Operation	CERCLA Assessments (PAs, APA's, SIs, etc.)	Comments: Re: EPA, County and/or State Enforcement, Activities, Major Documents and Milestones.
honoring women of the Confederacy.					<p>2010 – 2012 - April 2010 EPA requests FDEP position on NPL listing. May 2011 COJ submits SAR for Confederate Park. May 2012 FDEP concludes assessment phase completed on Confederate Park and asks for RAP. FDEP requests SARA for Parkview Inn (Former Citizens MGP). July 2012 COJ requests extension for RAP on Confederate Park. Still in assessment phase for motel portion. No remediation activities to date. State requests a hold regarding NPL listing.</p> <p>Update: January 2014 FS for Confederate Park. FS considers Hydraulic Control, Barrier Wall w-Extraction & MNA and Barrier Wall with ISS and MNA as Options. June 2015 & March 2016 RAP and Revised RAP for Confederate Park received by FDEP. August 2018 Former Parkview Inn owners (consultants) submitted a Phase II ESA report. September 2018 BSRA for Parkview Inn/Confederate Park executed. November 2018 Aquifer Performance Test /Groundwater Flow Modeling/Mass Flux Assessment/Multi-Phase Extraction Pilot WPs for Confederate Park submitted to FDEP.</p>
<p>Palatka Gas Authority Aka: Florida Power & Light 518 Main St. Palatka, FL 32177-3617 Currently: Still Palatka Gas Authority.</p>	NED	FLD981932007 COM_68359	Lowe CWG 1917 - 1932	<p>PA-2/1988 SSI-3/1991 SIP 5/1994</p> <p>Recommendation: NFRAP</p>	<p>Site Archived by EPA. State lead through FDEP NED.</p> <p>1990 to 1999- November 1993 CAR. July 1996 Supplemental CAR. March 1997 Source Removal Documentation Report. Removed 7,800 tons of coal tar impacted SLs and debris.</p> <p>2000 to 2009 - May 2003 Initial Assessment Report/CAP Addendum. Large scale SL removal and treated GW conducted in 2004. November 2004 IRAR 28,600 tons of MGP impacted SL removed/treatment of 2.2 million gallons of impacted GW & in-situ treatment by ORC. Completed initial Contamination Assessment phase. Remediation remedy-Natural attenuation and GW monitoring. November 2008 RAP submitted. March 2009 RAP approved by FDEP. May 2009 Remediation started incl. NAM GW monitoring. Remediation consists of bioremediation, sulfate injection and GW treated with GAC filter. GW monitoring and remediation continue.</p> <p>Update: GW Monitoring & Sulfate Injection Report June 2013. GW Monitoring Reports July 2013, November 2013, January 2014, April 2014, April 2014, July 2014, January 2015, August 2015, March 2016. October 2016 Conditional SRCO issued.</p>
<p>Peoples Gas System/TECO Aka: Jefferson Smurfit Corp of America Aka: Former Manufactured Gas Plant 1580 West Beaver St. (FMGP) 1435 West Church St Jacksonville, FL 32209-7210 & 32204 Currently: Commercial Properties including recycling facility</p>	NED	FLD981024672 COM_127942 COM_15605	W, CWG 1890's - 1950	<p>PA-10/1985 SSI- 6/1986. Reassessment- 7/2001</p> <p>Recommendation: OCA, State Lead Cleanup</p>	<p>EPA OCA, State lead is FDEP-NED.</p> <p>1980 to 1989 - November 1988 PCAR.</p> <p>1990 to 1999 - January 1999 CAR. October 1999 FS.</p> <p>2000 to 2009 - Two PRP funded IRAs (SL removal) conducted. June 2000 IRAR approx. 8,900 tons of MGP SL removed. Further assessment req. Additional Assessment shows offsite GW impacts. PRP has filed for bankruptcy, suspended work on site. June 2009 FDEP requests additional assessment from TECO.</p> <p>2010 – 2012 - June 2011 SARA submitted. November 2011 FDEP agrees additional GW assessment needed and to defer RAP. April 2012 Proposed off-site GW sampling map sent to FDEP. September 2012 Off-site site access granted.</p> <p>Update: September 2013 SARA completed. October 2014 IRAP issued. IRAP October 2015 Summary Report received. Both RPs are monitoring GW. RAP needed for TECO portion</p>

**STATUS of FLORIDA MANUFACTURED GAS PLANT SITES
February 2019**

MGP Address, Off-site MGP Impacted Property Address & Current Activities/Businesses	District	EPA ID# FDEP Site ID # MDERM-RER Id # Folio #	Gas Type & Years of MGP Operation	CERCLA Assessments (PAs, APA's, SIs, etc.)	Comments: Re: EPA, County and/or State Enforcement, Activities, Major Documents and Milestones.
<p>Pintsch Compressing Gas Co. Gas Works Aka: West Bay Creosote Study Intersection of West of Bay Street and Myrtle Ave. Jacksonville, FL 32204 Currently: Former MGP: TTX Company Property.</p> <p>Off-site MGP Impacts: COJ & FDOT ROW & JTA Paratransit Services retention pond area.</p>	NED	FLN000407365 COM_69669 ERIC_5901 271-1	O (Pintsch), 1903 - 1927	PSA 7/2001 PA-9//2001 SI- 12/2008 EPA Recommendation: FA ESI Start Needed	<p>Initially an EPA Lead. SL and some GW contamination detected during 2008 SI. Due to lack of receptors and urban setting, EPA issued an NFRAP. Site reportedly referred to NED District. Former rail yard MGP. Gas was manufactured by the rail company designed expressly for the illumination of railroad cars.</p> <p>1980 to 1989 – January & February 1987 & January 1988 – May 1988. Geotechnical exploration for I-95 expansion. Petroleum odors in SL borings near southeast corner of Myrtle Ave. underpass & West Bay Street/Myrtle Ave. intersection. Petroleum product and SL staining detected. May 1988 SL sample from a boring had PAHs similar to coal tar. September 1988 FDOT Contamination Assessment of property at northeast corner West Bay Street/Myrtle Ave. intersection. SL contamination determined. GW samples contained elevated levels BTEX and PAHs. November 1988 FEC PCA conducted at northeast corner West Bay Street/Myrtle Ave. intersection. Heavy oil SL contamination detected. January 1989. Additional assessment, heavily contaminated SLs detected. GW and SL samples collected east of intersection. Black dense residue encountered. SL and residue samples contained PAHs typical of coal tars. GW samples contained elevated levels of VOCs, PAHs and TRPHs.</p> <p>1990 to 1999 – January 1990 & February 1990. OVA screening of cuttings during I-95 support structure drill shafts during rehabilitation of I-95 near southwest and northeast corners of West Bay Street/Myrtle Ave. intersection. Excessively contaminated SLs (>100 PPM organic vapors) detected. GW with strong “creosote/petroleum” odors encountered. GW sample had high levels of lead and “creosote”. July 1991 A “creosote” seep discovered emanating from cracks in retaining wall of the Myrtle Ave underpass. Seep near former MGP. FDER collects sample of seep. Sample had high levels of BTEX and PAHs similar to creosote or coal tar. Lead and silver also detected. March 1997 FDER SIS begins West Bay Creosote Study. October 1997 dark brown, yellow brown, viscous NAPL observed during SL borings and GW sampling of former MGP and adj. ROWs. Benzene, ethylbenzene and xylene, TRPHs and PAHs (BaP) detected above SCTL criteria in SL samples on FMGP and adjacent ROW. November 1997 Benzene, ethylbenzene, PAHs (i.e. naphthalene, BaP), TRPHs detected in GW above GCTLs. SW sample from seep has elevated BTEX and PAHs. Highest levels of PAHs near retention pond north of FMGP. In general, highest levels of VOCs, PAHs &/or TRPHs on footprint of FMGP.</p> <p>2000 to 2009 - February – March 2000 Benzene, ethylbenzene and PAHs (i.e. acenaphthene, naphthalene) detected in GW above GCTLs. SL samples also collected. VOCs & PAHs detected. Highest levels of PAHs near retention pond north of FMGP. July 2001 FDEP SIS completes West Bay Creosote study. GW, SL, GW flow contamination data suggests MGP (Pintsch) is source. Recommends additional delineation of SL and GW contamination. February 2003 EPA CERCLA SI Workplan. July 2008 SI fieldwork. Delay in SI caused by EPA START contract termination. December 2008 Final CERCLA SI report produced by FDEP using EPA START data. Elevated levels of VOCs (Benzene, ethylbenzene and xylene), PAHs (BaPTE) detected in SLs above SCTL criteria. Highest levels of VOCs and PAHs on former MGP site and just north of West Bay Street/Myrtle Ave. intersection. Benzene, PAHs (naphthalene, acenaphthalene) detected in GW above GCTLs.</p> <p>Update: As of January 2019, no new documents on FDEP Oculus/ERIC databases. Additional site assessment may be warranted.</p>
<p>Riverfront Park MGP Site Aka: Palatka Gas Light & Fuel Co. River and South 3rd Streets. Palatka, FL 32177</p>	NED	FLD981932015 COM_140647	C, W 1885 - 1959	PA-2/1988 SSI- 10/1989 SSI Phase II 8/1990 EPA Recommendation: NFRAP	<p>Site Archived by EPA 8/90. State Lead NED.</p> <p>2000's - September 2000 Environmental Assessment Summary Report & Source Removal Plan. May 2001. GW Assessment Plan, July 2001 Source Removal Report. December 2001 GW Monitoring Report.</p> <p>Update: Assessment and remediation (soil excavation) complete. enforcement closed.</p>

**STATUS of FLORIDA MANUFACTURED GAS PLANT SITES
February 2019**

MGP Address, Off-site MGP Impacted Property Address & Current Activities/Businesses	District	EPA ID# FDEP Site ID # MDERM-RER Id # Folio #	Gas Type & Years of MGP Operation	CERCLA Assessments (PAs, APA's, SIs, etc.)	Comments: Re: EPA, County and/or State Enforcement, Activities, Major Documents and Milestones.
Currently: Riverfront Park and Palatka City Dock and Boat Ramp					
St. Augustine Gasification Aka: St. Augustine Gas Co. Aka: St. Augustine Gas Service 98 Riberia St. St. Augustine, FL 32084 Currently: Owned by Fisherman's Harbor Marina, Inc. Includes Seafood Wholesale Shop.	NED	FLD101835528 COM_69756	W, CWG 1885 – 1956	PA-3/1988 SI-10/1991. ESI- 4/1997. EPA Recommendation*: Remedial Activities Under EPA Enforcement	EPA lead. Superfund Alternative site*. MGP impacts to San Sebastian River and adjacent wetlands. 1990 to 1999 - September 1998 AOC signed between COSA, Atlanta Gas and EPA for EE/CA. 2000 to March 2013 April 2000 Final EE/CA report. September 2000 Excavation of contaminated SL & Sed approved by EPA. March 2001 AOC signed between COSA, Atlanta Gas and EPA for Remedial action. Contamination. Assessment complete. Removed approx. 70,000 yd ³ of contaminated SL by January 2002. NAM for VOCs started for GW in 2003. WP for Marina development sent to EPA and NOAA. WP plan deals with handling of contaminated Sed. November 2006 WP and HASP approved. 2007 Dredging Marina excavation. 99% of MGP source contamination removed. Update: Update: Remedy construction complete. GW monitoring on-going. December 2018. Annual GW monitoring event ongoing. Property supposed to have marina, hotel and condominiums when complete. However, site development on hold due to lack of funding.. Robenson Joseph (404-562-8891) is the EPA RPM joseph.robenson@epa.gov
Daytona Beach Gasification Plant Aka Daytona Beach MGP Aka: Daytona Beach Service Center 132 N Seagrave Ave. Daytona Beach, FL 32114-3139 Currently: Still FP&L Service Center.	CD	FLD984171728 COM_91018	W, CWG 1912 – mid 1950's	PA-5/1990 SI- 7/1991 EPA Recommendation: NFRAP	Site Archived by EPA in 1993. Site lead by FDEP CD. 1990 to 1999 - February 1991 FDEP State contractor completes CERCLA SI WP. March 1991 FDEP and State contractor conduct CERCLA SI sampling investigation. July 1991 FDEP State contractor completes CERCLA SI report. December 1994 CAR received by FDEP. March 1998 Source Removal Documentation Report. Approx. 41,000 tons of MGP impacted SL, 5,800 gallons of free product and 3,900 gallons of contaminated GW removed. October 1999 First Annual GW Monitoring Report 2000 to March 2013 - November 2000, April 2002, June 2004, March 2005 Second to Fifth Annual GW Monitoring Reports. March 2008 Site Assessment Activities Report. February 2009 Annual GW Monitoring Report. December 2009 Status Report of Site Activities. 2010 – March 2013 - March 2011, March 2012, March 2013 Annual Reports of Site Activities. November 2011 Well Installation and GW Sampling Report. August 2012 WP to Prepare Remedial Alternatives Evaluation. As of early March 2013 Summary, Site Assessment complete. RP has performed an IRA SL/source removal, are continuing FP removal. FP recovery wells installed. FP removal and long-term GW monitoring ongoing. Update: March 2013 Remedial Alternatives Evaluation Report . October 2013 Pilot Study WP. March 2014 GW Monitoring Report. November 2014 Pilot Study Completion Report (Biosparge). June 2015 RAP. November 2015 FDEP issues RAP Approval Order. April 2016 GW Monitoring Report. January 2017 to May 2018 Remedial Action Status Reports sent to FDEP. August 2018 FDEP requests RAP Modification for expansion of Biosparging program. November 2018 Remedial Action Status Report. FDEP CD Summary: RP has performed an IRA SL/source removal, are continuing FP removal, & biosparging since 2016 per approved Pilot Study/RAP. Expecting RAP Mod in 2019 to expand biosparge system.
Deland Gas System	CD	FLD984172197 COM_315091	N/A N/A	PA-6/1991 SI- 4/1998	Tank transfer station. No MGP operations. Gas piped from Sanford MGP. No further federal or State action.

**STATUS of FLORIDA MANUFACTURED GAS PLANT SITES
February 2019**

MGP Address, Off-site MGP Impacted Property Address & Current Activities/Businesses	District	EPA ID# FDEP Site ID # MDERM-RER Id # Folio #	Gas Type & Years of MGP Operation	CERCLA Assessments (PAs, APA's, SIs, etc.)	Comments: Re: EPA, County and/or State Enforcement, Activities, Major Documents and Milestones.
SW corner of S. Florida & Beresford Ave int. Deland, FL 32720-7382 Currently: Now Alamo Car Wholesaler Business				EPA Recommendation: NFRAP	
Deland Hasche Gas Plant 401 North Stone Street Deland, FL 32720-4013 Currently: As of October 2013, now a communications company location.	CD	FL0001897990 COM_313314	Hasche N/A	PA-7/1997 SI- 4/1998 EPA Recommendation: NFRAP	Site Archived by EPA. Hasche gas process. No MGP contaminants detected. No further federal or State action.
Orlando Gasification Plant 600 Block West Robinson St. Orlando, FL 32801-1724 Site consists of two parcels separated by West Robinson Street. North parcel contained most of MGP processing apparatus (retort building, tar well, naphthalene scrubbers, purifiers, tar storage tank, heavy & light oil tanks, tar/water tank, etc.). The south parcel contained the Gas Holders. Currently: TECO/Peoples Gas, some commercial and vacant properties.	CD	FLD984169235 COM_241803	W, CWG 1888 - 1960	PA-7/1989 SI- 2/1991 SIP 1992 ESI- 5/1996 ESI 2 9/2002 EPA Recommendation: FA*	EPA Lead. *Superfund Alternative Site. 2000 to 2009 - June 2001 Non-NPL PRP search completed. January 2002 EPA AOC executed for ESI-Phase 2 with PGS, Atlanta Gas Light Co & FPC. January 2003 Draft RI/FS Phase 1 RI soil and GW sampling complete. June 2003. RI/FS neg. started. September 2003 EPA AOC executed for RI/FS with PGS, Atlanta Gas Light Co & FPC. December 2003 RI/FS WP. March 2004 EPA Fact Sheet on Environmental Investigation at Former Plant Site. March 2005 Phase II RI Work plan submitted to EPA December 2006 Phase II RI WP Addendum to delineate coal tar contamination in Floridan aquifer. Drainage wells may have provided open conduit to Floridan aquifer. January 2008 Phase II RI fieldwork completed. September 2008 Human Health and Ecological Risk Assessment report. January 2009 Final RI report. April 2009 Upper Floridan Aquifer GW Monitoring Plan. August 2009 Final Human Health and Ecological Risk Assessment report. December 2009 Revised Upper Floridan Aquifer GW Monitoring Plan. 2010 – 2012 - March 2010 SL Gas Sampling QAPP. July 2010 Final Upper Floridan Aquifer GW Monitoring Plan. August 2010 SL gas and GW monitoring plan approved. March 2011 Revised Human Health and Ecological Risk Assessment report. April 2011 GW Monitoring Report. November 2011 Draft Preliminary FS for OU-1. 2011-2012 determination of OU-1 cut lines was negotiated. November 2012 WP for Installation/Sampling of Surficial Aquifer MWs. January 2013 Draft FS Report for OU-1 (Site SLs & upper-level aquifer) had been submitted and was under EPA review; FDEP had no comments. PRPs continuing RI of OU-2 (Deepwater aquifer). Update: PRPs continuing remedial investigation of OU-2 (deepwater aquifer). June 2013 EPA issues Proposed Plan for OU-1. September 2013 EPA issued cleanup plan/ROD for OU-1 & completed legal negotiations with PRPs to implement the cleanup activities. March 2014/September 2014 Phase II Historic Well Investigation WP/Draft Report for OU-2. September 2015 Remedial Design WP for OU-1. In-Situ Stabilization & Solidification Treatability Study WP and Draft Field Sampling & Analysis Plan for OU-1. October 2015 Draft OU-1 Pre-Construction GW Monitoring Plan. March 2016 Field Sampling & Analysis Plan for OU-1 and Final OU-1 Pre-Construction GW Monitoring Plan. April 2016 Draft FS for OU-2. November 2016 Upper Floridan GW Monitoring Plan. February 2017 Upper Floridan GW Monitoring Report. March 2017 Preliminary Design Report for OU-1. June 2017 Draft Pilot Study WP for OU-2. August 2017 Barrier Wall Key Depth Evaluation & Supporting Documentation Report for OU-1. August 2017 FDOH issues Public Health Assessment for site. December 2017. Surface SL Removal WP for Parcels 4 – 6 of OU-1 issued. February 2018 OU-2 Site Wide GW Monitoring Plan. SL removal conducted in OU-1 in 2018. March 2018 Biosparging & Soil Vapor Extraction Testing WP for OU-1. May 2018 Biosparging & SL Vapor Extraction Testing Report issued. May 2018 Final Pilot Study WP for OU-2 received. July 2018 Remedial Action WP for OU-1 and Final Draft Design OU-1. Construction QAPP for OU-1.

**STATUS of FLORIDA MANUFACTURED GAS PLANT SITES
February 2019**

MGP Address, Off-site MGP Impacted Property Address & Current Activities/Businesses	District	EPA ID# FDEP Site ID # MDERM-RER Id # Folio #	Gas Type & Years of MGP Operation	CERCLA Assessments (PAs, APA's, SIs, etc.)	Comments: Re: EPA, County and/or State Enforcement, Activities, Major Documents and Milestones.
					August 2018 Meeting with EPA for comments to finalize RAP Final Design (Barrier Wall and GW remedial design) for OU-1. September 2018 Final Design Report for OU-1. No comments from FDEP on either final design or Pilot Study. EPA comments being addressed. As of September 2018, PRPs completed the remedial design for OU-1. Early remedial action activities to address the contaminated surface SL on parcels 4, 5, & 6 are ongoing. Remedial Action started. Remedial action field activities to address the contaminated SLs (Parcels 1, 2, & 3) and the contaminated GW from the upper-level aquifer will begin in early 2019. Robenson Joseph (404-562-8891) is the EPA Remedial Project Manager joseph.robenson@epa.gov
<p>Peoples Gas/West Florida Natural Gas Aka: Ocala MGP 613 NE Osceola Ave. (Behind 206 N.E. 9th Street) Ocala, FL 34470-5243</p> <p>Currently: Occupied by a company specializing sales of new and surplus metals (i.e. scrap metal yard).</p>	CD	FLD982119729 COM_134179	W, CWG 1899 – mid1950's	PA-8/1987 PAR-6/1989 Desk-top SI- 1/1991 SIP-Level B 1/1995 ESI 1/2000 EPA Recommendation: FA*	<p>Superfund Alternative site*. EPA lead.</p> <p>1980 to 1989 - January 1988 West Florida Natural Gas Co. and FDER entered CO. June 1988 Final CAR. June 1989 CARA.</p> <p>1990 to 1999 - June – July 1990 PRP funded IRA SL removal (10,000 tons MGP impacted SLs). August 1990 Interim Remediation Final Report. June 1991 WP to Investigate a DNAPL at Former MGP. March 1994 Supplemental CAR received by FDEP. February 1997 Report of Additional GW Investigation. July 1998 Additional GW Sampling Letter Report. June 1999 FDEP asks EPA to take enforcement lead.</p> <p>2000 to 2009 - June 2001 AOC for RI/FS signed between PRP and EPA. March 2002 HRS documentation package complete. June 2004 Draft RI/Preliminary FS issued to EPA. 2005 RI fieldwork conducted. October 2007 Draft Human Health and Ecological Risk Assessment Report. February 2008 RI report complete/approved by EPA. Site Assessment complete. March 2008 RI report approved by EPA. Site Assessment complete. October 2008 Revised 1 Human Health and Ecological Risk Assessment Report. July 2009 Revised 2 Human Health and Ecological Risk Assessment and FS reports submitted to EPA. Draft FS also submitted to EPA.</p> <p>2010 – 2013 - Concrete cap installed and Restrictive Covenant Recorded. May 2010 Bench-Scale Treatability Study WP. March 2012 Geophysical Investigation Report. March 2011, November 2011, January 2012 Supplemental FS WPs. May 2012 Lab Evaluation of Natural Oxidant Interaction & Buffering Capacity Report. Concrete cap installed. Treatability studies on-going. ROD should be completed in FY 2014.</p> <p>Update: April 2014 to January 2018. Monthly Progress Reports. June 2014 Final Treatability Study submitted. March 2017 Comprehensive GW Sampling Scope of Work proposal. August 2017 Tech. Impracticability Evaluation Report for Waiver of GW ARARs. February 2018 Technical Memo focused on GW Remedial Alternatives Evaluation submitted. No comments from FDEP. EPA reviewing. PRPs are continuing the RI work for site. It is anticipated that the RI/FS will be completed in 2019 and the ROD for the site will be issued. After the EPA issues the ROD, the PRP will develop the design documents (drawings and specifications) to address the site contamination. Robenson Joseph (404-562-8891) joseph.robenson@epa.gov and William David Keefer (404) 562-8932 keefers.david@epa.gov are the EPA Remedial Project Managers.</p>
<p>Sanford Gasification Plant Aka: Florida Public Utilities 830 West 6th Street (both sides of Street) Sanford, FL 32771-2435</p> <p>Site consists of two parcels separated by West 6th Street. South parcel contained most of MGP processing apparatus</p>	CD	FLD984169193 COM_160171	W, CWG 1880's to 1952	PA-3/1990 SSI-Phase II 6/1991 SI- 1/1992 SIP 4/1994 ESI-6/1997 EPA Recommendation: FA*	<p>EPA lead. Superfund Alternative Site*. MGP impacts to Cloud Branch (aka by locals "Gas Creek") and outfall area of Lake Monroe.</p> <p>1990 to 1999 - October 1991 Preliminary Investigation of Residual Coal Tar Materials in the Cloud Branch Drainage Report. February 1994 CAR. July 1997 EPA Requests from FDEP "Governors Letter" for written request that the site be placed onto the NPL. Site will be PRP funded. Special Notice Letters sent to FPUC, Florida Power Corp., FP & L, Atlanta Gas Light Co. & City of Sanford (Sanford Group). August 1997 HRS package completed. April 1998 AOC for RI/FS signed. July 1998, September 1998 Draft and Revised RI/FS WPs issued. July 1999 Draft Baseline Risk Assessment; draft FS OU-1 (Impacted SLs) and Final RI Reports received. October 1999 Revised Baseline Risk Assessment Report.</p>

**STATUS of FLORIDA MANUFACTURED GAS PLANT SITES
February 2019**

MGP Address, Off-site MGP Impacted Property Address & Current Activities/Businesses	District	EPA ID# FDEP Site ID # MDERM-RER Id # Folio #	Gas Type & Years of MGP Operation	CERCLA Assessments (PAs, APA's, SIs, etc.)	Comments: Re: EPA, County and/or State Enforcement, Activities, Major Documents and Milestones.
<p>(retort building, gas producers, scrubbers, purifiers, a gasometer tank, gas holder, oil tanks, etc.). The north parcel contained a gas holder and oil tank.</p> <p>Currently: Vacant Land (both sides of Street)</p>					<p>2000 to 2009 - January 2000 Revised 2 Baseline Risk Assessment and Final FS OU-1 Reports received. February 2000 FS for OU-1. July 2000 EPA ROD for OU-1 completed. September 2000 FS Report for OU-2 (Impacted GW) issued. January 2001 EPA Proposed Plan Fact Sheet for OU-2 received. February 2001 Ecological Risk Assessment Step 1 for All Media & Steps 2 & 3 for SL issued. June 2001 ROD for OU-2 completed. 1st ROD - OU 1 SL (excavate w/ thermal treat). OU 2 GW (NAM-10 years). June 2002 DSAP fieldwork completed. August 2002 Draft DSAR. October 2002 Ecological Risk Assessment WP -OU-3 (Cloud Branch Creek and Cloud Branch Creek Delta in Lake Monroe) with Final DSAR in December 2002. Additional SL contamination (4 times original) found. February 2003 Final Remedial Alternatives Evaluation Report for OU-1 issued. February 2004 Draft Ecological Risk Assessment for OU-3. December 2004 Proposed SL Cut-Lines for Remediation of OU-1 Report. January 2005 Revised Ecological Risk Assessment for OU-3 report. February 2006 Draft Focused FS Report OU-3. May 2006 Revised In-Situ Solidification Treatability Study OU-1 WP. September 2006 OU 1 ROD amended (Solidification/Stabilization). OU 3 (Cloud Branch Seds) Eco. Risk completed. ROD amendment for OU 3 completed. April 2007 In-Situ Solidification Treatability Study. September 2008 Remedial Design WP OU-2 & OU-3. January 2009 Pilot Test WP for In-Situ Stabilization/Solidification OU-1, OU-2 & OU-3 and Preliminary Design Report for OU-1, OU-2 and OU-3. Consent Decree. In situ solidification (OU 1, 3) is the remedial strategy for site. June 2009 Revised Pilot Test WP For In-Situ Stabilization/Solidification OU-1, OU-2 & OU-3 September 2009 Draft Final Design Report for OU-1, OU-2 & OU-3. November 2009 Final Remedial Action WP for OU-1, OU-2 & OU-3.</p> <p>2010 – March 2013 January 2010 Final Design Addendum No. 1 For OU-1, OU-2 & OU-3. October 2011 GW Monitoring Plan. December 2011 Revised GW Monitoring Plan. RA activities complete 1st quarter of 2011. June 2012 Semi-Annual GW Monitoring Report. August 2012 Revised GW Monitoring Plan & QAPP. September 2012 Final Remedial Action Report for OU-1/OU-3. December 2012 Annual GW Monitoring Report-2012. Long term GW monitoring is ongoing. EPA is placing institutional controls to restrict digging and GW well installation. EPA plans to complete first 5-Year Review in 2013. February 2013 PRPs enters into Consent Decree with EPA.</p> <p>Update: December 2013, March 2014 & December 2015 Annual GW Monitoring Reports issued. June 2016 Institutional Controls put in place, long term GW monitoring is ongoing. August 2016 Remedial Action Report for OU-2. December 2016 Draft Five Year Review/2016 Annual Report issued. May 2017 Final Draft Five Year Review/2016 Annual Report issued. April 2017 Bi-annual GW Sampling Report received. July 2017 Institutional Controls for the affected site properties were finalized to restrict digging in the SL stabilization remedy area and restrict GW well installation in areas of the contaminated GW plume. April 2018 EPA issues Ready for Reuse Sanford Mixed Use Property Fact Sheet. 2017 Annual GW Monitoring Report issued. The PRPs continue to monitor groundwater contamination at the site with EPA and FDEP oversight. Site conditions and GW data changed dramatically between 2012 & 2017. As of 2017, GW COCs are below health-based cleanup levels. Also, the unacceptable Site risks posed by GW, SL and Sed were all successfully eliminated. Shelby Johnston (404-562-8287) johnston.shelby@epa.gov is the EPA RPM</p>
<p>Cascade Park Gasification Aka: Tallahassee MGP (SW corner of Gadsden and Bloxham Streets Tallahassee, FL 32301</p> <p>Currently: Former MGP: western part of renovated Cascades Park including Retention Pond (Boca Chuba Pond), Picnic Tables and Fitness trail.</p>	NWD	FLD981931959 COM_67392 BF370001000	C, W, CWG 1880's – 1959	PA-12/1987 SI-2/1989 NUS ESI Data 5/1989 SIP 5/1993 ESI-5/1997 EPA Recommendation: FA*	<p>EPA lead. Superfund Alternative site*. Includes adjacent landfill (Cascade Landfill). Former MGP was adjacent to Centennial Field and bordered by Cascade Creek. Following the razing of MGP and Centennial Field, Cascade Creek was rerouted further west.</p> <p>1990 to 1999 - June 1990 CO executed between FDER and FDNR. April 1994 Phase I CAR. November 1998 AOC for EE/CA between COT & EPA signed.</p> <p>2000 to 2009 - - February 2002 EE/CA completed; Human Health RA complete and Ecological RA completed. March 2002 EPA Proposed Plan Fact Sheet. April 2002 Environmental Effects of Post MGP Construction Activities Cascade Park. September 2003 Draft RAP for East Cascades Park. September 2004 AOC for Non-Time Critical Removal Action between COT & EPA signed. November 2005 Removal Action WP for Soil Removal activities completed in 2006. Approximately 347.59 tons of Sed removed from Cascade Creek and 84,551.69 tons of SL removed from shallow and deep excavations. GW NAM ongoing. PRP continues to fund site cleanup, monitoring and oversight activities. As part of Blueprint 2000 project, site to be made into a large public park w/ trails, amphitheater, a baseball field and retention pond.</p>

**STATUS of FLORIDA MANUFACTURED GAS PLANT SITES
February 2019**

MGP Address, Off-site MGP Impacted Property Address & Current Activities/Businesses	District	EPA ID# FDEP Site ID # MDERM-RER Id # Folio #	Gas Type & Years of MGP Operation	CERCLA Assessments (PAs, APA's, SIs, etc.)	Comments: Re: EPA, County and/or State Enforcement, Activities, Major Documents and Milestones.
					<p>2010 – March 2013 - April 2010 COT began rebuilding Cascade Park which includes trails, playgrounds, a 16-foot waterfall, interactive fountains, a war memorial, and a state-of-the-art amphitheater for concerts and community events. 2012 COT performing initial RI activities. COT currently performing a treatability study & will be sending a report of findings to EPA in mid-June 2013. If COT maintains current schedule, a FS study will be completed by November 8, 2013. EPA hoped to issue a ROD for the site by September 30, 2014.</p> <p>Update: September 2013 In-Situ Chemical Oxidation Field Scale Treatability Study Report issued. October 2013 Environmental Management Construction Plan issued. March 2014 COT officially opened Cascade Park. September 2014 Boca Chuba Pond Liner Installation Report. August 2015 Supplemental NAM GW sampling report. October 2016 Annual NAM GW sampling report. June 2018 EPA Community Involvement Plan and EPA also issues Proposed Plan/Proposed Plan Fact Sheet for site. October 2018 FDEP provided approval of Draft ROD. EPA extended Proposed Plan public comment period to mid-November 2018. Final ROD likely in December 2018 or January 2019. .Eric Spalvins (404-562-8938) spalvins.erik@epa.gov is now the EPA RPM.</p>
<p>Cascade Landfill Aka: Old Abandoned City of Tallahassee Landfill, Tallahassee, FL 32301 “Former Cascades Sinks” area south of RR and former Cascade Park MGP</p> <p>Currently: southern part of renovated Cascades Park including parking area and Capital Cascades Trail.</p>	NWD	FLD984169177 COM_67392	N/A MGP Dump	PA – 5/1989 SI-2/1989 NUS ESI Data 5/1989 ESI-5/1997 EPA Recommendation: FA*	EPA lead. Superfund Alternative site*. Includes adjacent MGP. Part of site also referred to as “Hobo Hideout”. Old automobile parts, C&D wastes. Also, ash, slag and purifier waste from adjacent MGP disposed into Landfill. November 1986 FDER ORT investigation Report of Landfill. February 1991 COT Preliminary Technical Report. August 1991 PCAR. June 1993 Supplemental Report. November 1998 AOC for EE/CA between COT & EPA signed. See Cascade Park Gasification Comments above for applicable enforcement, documents and activities.
<p>Pensacola Gasification Plant Aka: Pensacola Manufactured Gas Plant Cervantes & N Hayne Streets Pensacola, FL 32503</p> <p>Currently: Majority of FMGP on north side of Cervantes St. under I-110 overpass & Exit 2 off ramp; abutting the Louisville & Nashville RR. One Gasometer was located under I-110 overpass just south of Cervantes Street on FDOT property adjacent to City Police Station.</p>	NWD	FLD984169250 COM_69033	W, CWG 1880's 1932	PA-1/1990 Desk-top SSI-1/1992 SIP 7/1993 ESI- 1/2000. EPA Recommendation: OCA, State Lead Cleanup	<p>State lead through FDEP NWD District.</p> <p>1990 to 1999 - -March 1991 PCAR. December 1993 CAR. March 1996 MOP issued & FDEP issue MOP Approval Order. October 1996, June 1997, September 1998 MOP Reports.</p> <p>2000 to 2009- - September 2001 MOP – 2001 Sampling Report. July 2002 MOP – 2002 Sampling Report. July 2003 MOP – 2003 Sampling Report. June 2004 MOP – 2004 Sampling Report. April 2005 MOP – 2005 Sampling Report. May 2006 MOP – 2006 Sampling Report. September 2006 and May 2007 Proposals for Revised MOP received by FDEP. May 2007 MOP – 2007 Sampling Report. April 2008 MOP 2008 Sampling Report. September 2008 MOP Modification Proposal Addendum to FDEP. March 2009 MOP 2009 Sampling Report.</p> <p>2010 – March 2013 - November 2010 NFA Proposal, for conditional closure, received by FDEP. April 2011, FDEP informs PRP NFA proposed controls appear adequate. NWD letter provisionally approves NFA. As of March 2013 summary, Assessment complete. No SL removal. GW Monitoring only and natural attenuation ongoing.</p> <p>Update: November 2015 Off-site SL sampling Proposal for RMO III conditional closure received. February 2016 SL Data Analysis Letter report for off-site sampling received. March 2018 A site-specific MOU executed by DOT and DEP for the Site. May 2018 Conditional SRCO</p>

**STATUS of FLORIDA MANUFACTURED GAS PLANT SITES
February 2019**

MGP Address, Off-site MGP Impacted Property Address & Current Activities/Businesses	District	EPA ID# FDEP Site ID # MDERM-RER Id # Folio #	Gas Type & Years of MGP Operation	CERCLA Assessments (PAs, APA's, SIs, etc.)	Comments: Re: EPA, County and/or State Enforcement, Activities, Major Documents and Milestones.
					issued to RPs, with dig restriction, water use restriction, engineering controls, digging restriction, prior authorization for storm water facilities and dewatering activities.
<p>Bradenton Gasification Plant Aka: Bradenton Manufactured Gas Plant Aka; Southern Gas and Electric Co. 705 3rd St. West Bradenton, FL 34205</p> <p>Currently: City of Bradenton Fenced, vacant land adjacent to City Carpentry Shop, Pumping Station & Elevated Water Tank.</p>	SWD	FLD984169185 COM_65180 349-1 BF411301000 BF411301001	CWG 1927 to 1952	PA-1/1990 SI- 8/1993 IA- 3/1995 EPA Recommendation: NFRAP	<p>Site Archived by EPA 3/95. State lead through FDEP SWD.</p> <p>1990 to 1999 - August 1990 Environmental Assessment. December 1994 PCAR received by FDEP. July 1995 IRAP. October 1996 IRAR issued. 5,168.64 tons of MGP impacted SL excavated and removed for thermal treatment. August 1997 Report of Additional assessment Activities and WP to Complete Contamination Assessment Task received by FDEP. December 1997 CAR. September 1998 Focus RAP issued. June 1999 Source Removal Report. July 1999 Source Removal Report Addendum. October 1999 Additional Assessment Actions Report.</p> <p>2000 to 2009 - April 2000 Supplemental RI WP. December 2000 Supplemental RI Report. September 2001 RI WP and Revised Supplemental RI Report. January 2002 Revised RI WP. June 2002 RI Report. April 2003 Storm Drain Investigation Report. October 2003 Revised Storm Drain Investigation Report and RI Report Addendum. April 2004 Revised RI Report Addendum. June 2004 Field WP – 2004. February 2005 GW & Storm Drain Sampling Report. April 2005 GW Sampling Results and FP Removal Report-February 2005 event. July 2005 GW Sampling Results and FP Removal Report-May 2005 event. February 2006 Storm Drain Monitoring Results – 2005; GW Sampling Results and FP Removal Report-July to November 2005 events and 3rd and 4th Quarter GW Sampling and FP Recovery events. March 2006 GW Sampling Results and FP Removal Report-January & February 2006. June 2006 Site Summary Report (August 1990 to December 2005). September 2006 Storm Drain Monitoring Results –2006 and GW Sampling Results and FP Removal Report-March to May 2006. December 2006 GW Sampling Results and FP Removal Report – June to August 2006. January 2007 GW Sampling Results and FP Removal Report-September to November 2006 and Storm Drain Sampling Letter Report. May 2007 Storm Drain Monitoring Results and GW Sampling Results and FP Removal Report – January & February 2007. August 2007 GW Sampling Results and FP Removal Report for May 2007. February 2008 GW Sampling Results and FP Removal Report for November 2007. March 2008 Storm Drain Sampling and Vapor Monitoring Results for January 2008. July 2008 SARA. September 2008 GW Sampling Results and FP Removal Report. October 2008 ISR for Vadose Zone SL Impacted by As and CN WP. February 2009 GW Sampling Results and FP Removal Report for November 2008. July 2009 ISR Report 541 tons of MGP impacted SL removed. October 2009 GW Sampling Results and FP Removal Report for May 2009.</p> <p>2010 to March 2013 January 2010 GW Sampling Results and FP Removal Report for November 2009. September 2010 GW Sampling Report (June 2010 event). January 2013 FDEP issues Site Assessment Approval. As of March 2013, continuing with contamination assessment, need additional. Horizontal delineation for GW and SL contamination. Off-site GW sampled and plan is for additional work off-site. As of January 2013, site assessment appears complete. January 2013 SAR approved. Move to RAP stage.</p> <p>Update: April 2013 RAP Confirmation SL Sampling WP. November 2103 Brownfield Area Designation Resolution from City of Bradenton. December 2013 Site became part of a Brownfield. January 2015 ISR report included cut-line sampling, GW sampling, FP gauging, SL excavation and site restoration. December 2015, FDEP approved NFA with conditions proposal. Restrictive covenants were executed and recorded for the site and adjacent impacted property owned by the City of Bradenton. March 2017 Declaration of Restrictive Covenant. May 2017 Amended BSRA issued and Conditional SRCO executed.</p>
<p>Central Florida Gas Co. Gasification Plant Aka Winter Haven MGP 1705 7th St.</p>	SWD	FLD984169227 COM_65250	CWG 1929 to 1953	PA-5/1989 Desk-top SI- 5/1991 SIP 7/1994	<p>State lead through FDEP SWD. MGP impacts in Lake Shipp located immediately west of site. Site Reassessment ongoing by EPA. ESI start needed. However, EPA assigned OCA. State action under FDEP SW Dist. 2/90</p> <p>1980 to 1989 - Preliminary Site Assessment Summary Report.</p>

**STATUS of FLORIDA MANUFACTURED GAS PLANT SITES
February 2019**

MGP Address, Off-site MGP Impacted Property Address & Current Activities/Businesses	District	EPA ID# FDEP Site ID # MDERM-RER Id # Folio #	Gas Type & Years of MGP Operation	CERCLA Assessments (PAs, APA's, SIs, etc.)	Comments: Re: EPA, County and/or State Enforcement, Activities, Major Documents and Milestones.
<p>Winter Haven, FL 33880-4374</p> <p>Currently: Central Florida Gas Co./Chesapeake Utilities LP Storage & Shops</p>				<p>EPA Recommendation: OCA, State Lead Cleanup</p>	<p>1990 to 1999 - July 1990 CAR issued. July 1994 FS. August 1995 GW Sampling Results (June 1995) Letter report. April 1996 Summary Assessment Report. May 1996 AS/SVE Pilot Study WP. October 1997 NAPL Investigation and SL Sampling WP. May 1999 Additional Field Investigation Results Letter Report.</p> <p>2000 to 2009 - January 2000 AS/SVE Pilot Study report. February 2001 RAP received by FDEP. September 2001 SL & Sed Sampling Results Letter report. April 2002 Status of RAP Implementation BS/SVE Report. July 2002 WP for Additional Assessment Activities received. May 2003 First Semi-Annual RAP Implementation Status Report. June 2003 CARA received by FDEP. December 2003 Second Semi-Annual RAP Implementation Status Report. May 2004 Third Semi-Annual RAP Implementation Status Report. December 2004 Fourth Semi-Annual RAP Implementation Status Report. June 2006 Seventh Semi-Annual RAP Implementation Status Report. December 2006 Eighth Semi-Annual RAP Implementation Status Report. June 2007 Ninth Semi-Annual RAP Implementation Status Report. December 2007 Tenth Semi-Annual RAP Implementation Status Report. June 2008 Eleventh Semi-Annual RAP Implementation Status Report. December 2008 Twelfth Semi-Annual RAP Implementation Status Report. July 2009 Thirteenth Semi-Annual RAP Implementation Status Report</p> <p>2010 to March 2013 - January 2010 Fourteenth Semi-Annual RAP Implementation Status Report. April 2010 SL Excavation & IRAP issued. June 2010 Fifteenth Semi-Annual RAP Implementation Status Report. December 2010 Sixteenth Semi-Annual RAP Implementation Status Report. June 2011 Seventeenth Semi-Annual RAP Implementation Status Report. December 2011, June 2012, November 2012, June 2013 Semi-Annual RAP Implementation Status Reports. As of March 2013, Summary State and PRP enter into CO. Remedial action underway for the on-site SL and GW contamination. Delay related to finalizing the assessment of impact to biota in Lake Shipp, and risk assessment is ongoing. An offsite portion of the property scheduled for remediation was held up due to site access issues. Using bio-sparging and periodic SVE for remediation since 2002. January 2013 FDEP notes RAP not working and requests a RAP modification. Some areas of MGP have seen significant cleanup, while some northern and southern areas are still contaminated and have offsite contamination plumes to be further delineated.</p> <p>Update: January 2014, June 2014, January 2015, June 2015, February 2016, July 2016, January 2017, June 2017, December 2017 & May 2018 Semi-Annual RAP Implementation Status Reports. BS/SVE system operation except during GW sampling events. December 2018 Semi-Annual RAP Implementation Status Report received by FDEP. As of December 2018, MGP Site In compliance with FDEP.</p>
<p>Clearwater Coal Gasification Plant 400 Myrtle Street Clearwater, FL 33755-4433</p> <p>Currently: FMGP- Clearwater Gas Systems Off-site – MGP related GW plume extends onto Pinellas Co DOH</p>	SWD	<p>FLD984168088 COM_65207 BF529701006 529500093</p>	<p>CWG 1925 to mid-1950's</p>	<p>PA-10/1988 SI Phase II 6/1990</p> <p>EPA Recommendation: NFRAP</p>	<p>Site Archived by EPA 7/90. State lead through FDEP SWD District. City of Clearwater Incinerator was located to east of MGP.</p> <p>1990 to 1999 – January 1997 Interim CAR. January 1998 Status Report for December 1997. February 1998 Status Report for January 1998. March 1998 Status Report for February 1998. April 1998 Status Report for March 1998. June 1998 Status Report for April - May 1998 Status Report for June 1998. August 1998 Status Report for July 1998. October 1998 Status Report August-September 1998. November 1998 Status Report for October 1998. February 1999 Status Report for January 1999. December 1999 CAR.</p> <p>2000 to 2009 – May 2001 Status Report for April – May 2001. July 2002 2002 GW Sampling Summary Letter report. October 2002 Status Report for July – October 2002. October 2002 Supplemental Assessment WP received by FDEP. May 2003 Supplemental Assessment Report. January 2008 – FDEP offered agreement to forego additional on-site vertical GW delineation if PRP continues to monitor perimeter Floridan wells (CAR will be approved); PRP agreed with this and can now proceed to RAP stage. May 2008 GW Results Spring 2008 Report. July 2009 GW Sampling Report (June 2009).</p>

**STATUS of FLORIDA MANUFACTURED GAS PLANT SITES
February 2019**

MGP Address, Off-site MGP Impacted Property Address & Current Activities/Businesses	District	EPA ID# FDEP Site ID # MDERM-RER Id # Folio #	Gas Type & Years of MGP Operation	CERCLA Assessments (PAs, APA's, SIs, etc.)	Comments: Re: EPA, County and/or State Enforcement, Activities, Major Documents and Milestones.
					<p>2010 to March 2013 – February 2010 GW Results Letter report. August 2010 Status Report – July 2010 Additional Assessment Field Activities report. October 2010 October 2010 Status Report -Additional Assessment Field Activities Letter report and Treatment of Former MGP Residuals Using In-Situ Chemical Oxidation Report. February 2011 FDEP approval of Pilot Study (Tasks #s 1 &2). October 2011 Status Report -October 2011 Additional Assessment Field Activities/Second Quarterly GW Monitoring Results report. January 2012 Status Report January 2012 Third Set of Quarterly GW Monitoring Results Letter report. April 2012 Status Report February 2012 Fourth Set of Quarterly GW Monitoring Results Letter report. As of March 2013 SWD Summary - Delineation of vertical and horizontal extent of GW contamination has not been completed. Delineation of SL contamination not completed. Add. Assessment (incl. vertical delineation) required before a RAP can be proposed. Executed CO (OGC #93-0230). April 2003-Site referred back to FDEP Federal Programs Section for possible CERCLA re-evaluation. August 2003 HRS reevaluation conducted using new information. Based on re-evaluation, site recommended for further CERCLA evaluation. January 2008 – FDEP offered agreement to forego additional on-site vertical GW delineation if PRP continues to monitor perimeter Floridan wells (CAR will be approved); PRP agreed with this and can now proceed to RAP stage. FDEP approved a 4-task Pilot Study WP to allow University of Waterloo (UW) to conduct pilot test remediation using in situ chemical oxidation using sodium persulfate. In compliance.</p> <p>Update: May 2014 UW Laboratory Treatability Evaluation/Push-Pull Test Results & Pilot-Scale Study WP. FDEP approved a 4-task Pilot Study WP to allow University of Waterloo to conduct pilot test remediation using in situ chemical oxidation using sodium persulfate. September 2016 Status Report including: source area characterization & baseline conditions, Bench scale/Push-Pull Tests, treatment & short/long term monitoring, . December 2017 BSRA executed. March 2018 RAP received by FDEP. May 2018 ISR Plan Approval from FDEP. July 2018 Quarterly O & M Report, 2nd Quarter, Year 1. City of Clearwater has begun site redevelopment. The redevelopment is an approximately 3-year scope of work including storm water pond installation, associated dewatering, and GW monitoring. Site is in compliance with FDEP.</p>
<p>Lakeland Gasification Plant Aka: Lakeland MGP Aka: Peoples/TECO Gas System 445 Kathleen Rd. (now 445 Peoples Lane) Lakeland, FL 33815-1315</p> <p>Currently: Still TECO Peoples Gas/Morningstar Fleet Services and includes part of Peoples Lane ROW.</p> <p>Off-site: MGP impacts to Kathleen Road (constructed 1968) & portion of nearby Florida Tile</p>	SWD	FLD984169243 COM_65245	CWG 1916 to 1959	PA-1/1990 SI- 9/1992 ESI- 9/1998 Draft Reassessment -7/2000 EPA Recommendation: OCA, State Lead Cleanup	<p>State lead through FDEP SWD District.</p> <p>1990 to 1999 – September 1997 Draft Trenching Assessment Report and Source Removal WP. July 1998 Summary of October 1997 Source Removal and Additional Source Removal Activities. Initially, approximately 5,000 tons of MGP impacted SL excavated and removed. June 1998 EPA completes Aerial Photographic Analysis of Lakeland Gasification Plant site. July 1998 Phase II Source Removal conducted. Both source removals eliminated a total of 6,800 tons of contaminated SL, no GW contamination was encountered. November 1999 Residual Risk Assessment report. December 1999 FDEP Site Screening Superfund (CERCLA) subsection provides SWD with suggested additional SL borings/trenching for MGP impacts on nearby Florida Tile property and Kathleen Rd ROW.</p> <p>2000 to 2009 – September 2000 Comparison of EPA Study to Actual Field Work and Cleanup. April 2000 FDEP SWD provides comments Re: possible MGP impacts on Florida Tile property and Kathleen Rd ROW to FP&L. June 2000 FP&L notifies FDEP that Kathleen Rd borings not warranted. January 2001 FDEP notifies EPA of findings of Florida Tile Comparison Report. FDEP approved source removal of coal tar residuals from area owned by Florida Tile. April 2001. FDEP notifies Florida Tile no further assessment of MGP related waste necessary since Comparison Report shows removal of MGP impacted soils occurred during construction of Northwest Reservoir. October 2005 Off-site Notification letters issued Data from a 2007 report demonstrates area was sufficiently re-worked, re-graded and re-paved that any remaining impacts would likely have been removed. In 2008, Kathleen Road was expanded, and re-routed north and east of the site, and George Jenkins Blvd. was constructed. New road to west is now People's Lane. As of March 2013, Summary Source Removal by FP & L in 1997-98. Tar under Kathleen Road. Site Reassessment ongoing by EPA. Little progress finalizing the assessment portion of this site. Request made to collect a GW from an offsite area, but this has not occurred. FDOT does not have current plans to remove the portion of Kathleen Road where the tar is still present, but FDEP doesn't have any way to gain assurance that it won't be removed in the future. Still working with FDOT on that aspect.</p>

**STATUS of FLORIDA MANUFACTURED GAS PLANT SITES
February 2019**

MGP Address, Off-site MGP Impacted Property Address & Current Activities/Businesses	District	EPA ID# FDEP Site ID # MDERM-RER Id # Folio #	Gas Type & Years of MGP Operation	CERCLA Assessments (PAs, APA's, SIs, etc.)	Comments: Re: EPA, County and/or State Enforcement, Activities, Major Documents and Milestones.
					<p>SWD files indicate last correspondence from FPL was request for meeting to discuss scope of additional GW & SL sampling. Pump & Treat GW remediation system in place. In 2006 FDOT discussed their bypass construction on part of site. SWD not actively managing site.</p> <p>2010 to March 2013 Last communication regarding site was emails with Jim McCarthy, P.G. in Tallahassee in January 2010. FDEP would revisit site enforcement history.</p> <p>Update: 2013 – 2014 Meetings with various entities were held, file review and historic review completed. January 2014. FDEP SWD sends inquiry to FDOT Re: any SL removal or sampling of Kathleen Road project. September 2014. FDEP issues an NFA for site. FDEP determined since the area was sufficiently reworked, regraded and repaved during Kathleen Road project (now Peoples Lane) any MGP impacts likely removed. Road re-grading has resulted in run-off swales, where road run-off would likely result in groundwater exceedances of BaPs and may not be indicative of contamination from former MGP. FDEP closed the file in September 2014 – no SRCO issued.</p>
<p>Peoples Gas Site/ Florida Suncoast Dome/"Thunder Dome" Aka: "Old Gas Plant" Now 1 Tropicana Drive, St. Petersburg, FL 33705-1703. Most of FMGP was located south of former 3rd Ave South on either side of former 12th Street South. FMGP also included Gas Holders north of Former 3rd Ave. South between Former 12th and 14th Aves. South.</p> <p>Currently: Tropicana Field Complex (Stadium and Parking Lots) - Home of the MLB Tampa Bay Rays baseball team as well as hosting concerts.</p>	SWD	FLD981930340 COM_65236	CWG 1914 to 1962	PAR 5/1988 SI- 2/1990 EPA Recommendation: OCA, State Lead Cleanup	<p>State lead through FDEP SWD District. FMGP was fronted by Booker Creek.</p> <p>1980 to 1989 – August 1987 Discharge into Booker Creek/Site Conditions Florida Suncoast Dome report and CAP. January 1988 CAR. June 1988 CARA issued. July 1988 CO executed between City of St. Petersburg and FDER. August 1988 Thermal Treatment FS report. February 1989 Draft FS Addendum report. March 1989 Draft RAP Detention Pond 3. May 1989 Risk Assessment Report and Site Rehabilitation Levels received by FDER. June 1989 Revised FS report. July 1989 Interim Excavation and Evacuation Plan and Landfill Treatment Area Conceptual Design Report. August 1989 Revised Risk Assessment Report and Site Rehabilitation Levels received. October 1989 Analytical Summary for OGPS Remediation Project. November 1989 RAP-SL Remediation. December 1989 Analytical Summary Report for November 1989.</p> <p>1990 to 1999 – January 1990 Analytical Summary Report for December 1989. February 1990 Analytical Summary Reports for January & February 1990. April 1990 OGPS SL Remediation report. January 1991 OGPS Completion report. September 1991 Closure Assessment Report UST Removal. November 1991 Phase II Studies at Toytown Bioremediation Cell report received for remediation of 95,705 yds³ of MGP contaminated SL from OGPS. June 1992 & September 1992 OGPS GW Investigation Program and Revised OGPS GW Investigation Program reports. January 1993 RAP Toytown Landfill Treatment Cell. September 1993 Revised GW Investigation Plan. December 1993 Revised RAP Toytown Landfill Bio-remediation Treatment Cell. April 1995 Summary Report Implementation of GW Investigation Plan/QAPP & Sampling Plan Toytown Bioremediation Cell. June 1995 Continuation of GW Investigation Plan received. June 1996 Old Gas Plant Supplemental Site Assessment Activities Letter report. September 1996 SL Characterization and RAP Modification Toytown Landfill Bioremediation Cell. February 1997 Second Supplemental Site Assessment letter report. October 1997 IRA report – 95.52 tons of petroleum/MGP impacted SLs excavated and removed for thermal treatment. May 1998 Discovery of SL Impacts & Subsequent Disposal at Booker Creek report. 296 tons of MGP impacted SL from Booker Creek removed. January 1999 Sampling Plan for Previously Unexcavated Areas received by FDEP. October 1999 Sampling Results for Previously Unexcavated Areas (1 & 2) report.</p> <p>2000 to 2009 - May 2000 OGPS GW and SW Sampling Results (Area 2) letter report. March 2002 GW/SW Monitoring Report Year 1, Quarter 1 for OGPS for Areas 1 & 2. May 2002 GW/SW Monitoring Report Year 1, Quarter 2 for OGPS. July 2002 GW/SW Monitoring Report Year 1, Quarter 3 for OGPS. October 2002 GW/SW Monitoring Report Year 1, Quarter 4 for OGPS received by FDEP. April 2003 GW/SW Monitoring Report Year 2, Semi-Annual 1 for OGPS. July 2003 GW/SW Monitoring Report Year 2, Semi-Annual 2 for OGPS. December 2003 GW/SW Monitoring Report Year 3, Semi-Annual 1 for OGPS. May 2004 GW/SW Monitoring Report Year 3, Semi-Annual 2 for OGPS. December 2004 GW/SW Monitoring Report Year 4, Semi-Annual 1 for OGPS. May 2005 GW/SW Monitoring Report Year 4, Semi-Annual 2 for OGPS. August 2007 GW/SW Monitoring Report for July 2007 at OGPS. January 2008 GW/SW Monitoring Report for December 2007 at</p>

**STATUS of FLORIDA MANUFACTURED GAS PLANT SITES
February 2019**

MGP Address, Off-site MGP Impacted Property Address & Current Activities/Businesses	District	EPA ID# FDEP Site ID # MDERM-RER Id # Folio #	Gas Type & Years of MGP Operation	CERCLA Assessments (PAs, APA's, SIs, etc.)	Comments: Re: EPA, County and/or State Enforcement, Activities, Major Documents and Milestones.
					<p>OGPS. July 2008 GW/SW Monitoring Report for June 2008 at OGPS. February 2009 GW/SW Monitoring Report for December 2008 at OGPS. April 2009 Source Removal Plan OGPS Area 3.</p> <p>2010 to March 2013 Additional SL removal completed in 2010 & GW NAM continuing. February 2011 GW/SW Monitoring Report for November 2010 at OGPS. June 2011 First Quarterly PARM Report for February 2011 at OGPS. January 2012 GW Monitoring and Second Quarterly PARM Report for September 2011 at OGPS. July 2012 GW Monitoring and Third Quarterly PARM Report for May 2012 at OGPS. February 2013 Combined GW Monitoring and Fourth Quarterly PARM Report for January 2013 at OGPS. As of March 2013, summary, Source removal. In monitoring only stages for GW and SW contamination. Needed to execute deed restriction for contaminated SL left in place. Additional SL removal completed in 2010 & GW NAM continuing. Additional SL sampling being conducted – site current as of 1/2013.</p> <p>Update: December 2013 NFA Proposal Report. March 2014 FDEP issues Site Assessment Approval. September 2016 Restrictive covenants were finalized and recorded. October 2016 FDEP issues Conditional SRCO issued by FDEP</p>
<p>Peoples Gas System Aka: Former Tampa MGP Formerly 1200 North 13th Street, now 1400 Channelside Drive Tampa, FL 33605-4925 Currently: Commercial Property for lease includes a Home designer business.</p> <p>Off-site: NAPL and DNAPL GW Plume south of FMGP.</p>	SWD	<p>FLD982119653 COM_65122 BF291406000 BF291406001</p>	<p>CWG 1895 to 1960</p>	<p>PA-8/1987 Desktop SI 5/1991 SIP 1/1995 EPA Recommendation: NFRAP</p>	<p>EPA archived site in 1996. State Lead by SWD.</p> <p>1980 to 1989 - July 1986 contaminated SL discovered by City road crew on 13th Street, north of Seaboard RR. October 1988 PCAP received by FDER. June 1989 Proposed SL Gas Survey Locations letter</p> <p>1990 to 1999 - July 1990 CAR received by FDER and CO executed between FDER and PGS. March 1993 CARA QAPP & WP. December 1993 CARA. July 1994 Documentation of Hydrochemical Facies Analysis Technique for Contamination Evaluation & Characterization report received by FDEP. April 1996 Field activities – IRA, 11,456,21 tons of MGP impacted SL excavated and removed to thermal treatment facility. August 1996 IRAR received by FDEP. October 1996 Supplemental CARA. December 1998 Supplemental CARA II. December 1999 Proposed WP for IRA for removal of SL with woodchips received by FDEP.</p> <p>2000 to 2009 - May 2000 IRAR an additional 2,197.50 tons of MGP impacted SL excavated and removed to a Landfill. Barrier wall installed on north boundary. November 2000 Environmental Risk Mitigation Plan & HASP Addendum for Trolley Car Track. March 2001 TECO/PGS Channelside Drive Facility Site Improvements – 2000. August 2001 SL and Dewatering Management Plan City of Tampa Trolley Car Project. September 2001 On-Site CAP received by FDEP. September 2002 Status Report. May 2003 source removal completed to 6 feet bls involving removal of tar from around buildings on-site. November 2003 Environmental Forensic report. April 2004 On-Site CAR. October 2004 Addendum to SL and Dewatering Management Report City of Tampa Trolley Car Project. March 2006 Off-site contamination letters sent out to adjoining property owners. July 2008 Summary of 2008 GW Gauging and Sampling Event letter report received by FDEP. August 2009 GW sampling Results for 2008 & 2009) received. November 2009-TECO identifies data gaps. Additional SL and GW assessment conducted 2009.</p> <p>2010 to March 2013 – Additional SL and GW assessment conducted 2010 to 2012. August 2010 SARA. June 2012 SARA II. As of March 2013, summary, still completing contamination assessment. May 2003 source removal completed to 6’ bls involving removal of tar from around buildings on-site. exp11/2009-TECO identifies data gaps. Additional SL and GW assessment conducted 2009-2012. Still pursuing completing delineation of contamination of SL vertically and laterally off-site; GW delineation appears complete both vertically and horizontally.</p> <p>Update: April 2013 Surface SL and Vadose Zone Soil Evaluation letter report. July 2013 Site Assessment approval letter from FDEP. May 2014 SL Boring Investigation Report. June 2014 MPE Pilot Testing WP. July 2014 MPE Pilot Testing Report. November 2014 ISR Plan submitted to FDEP. December 2014 Brownfield Agreement executed, January 2015 ISR Plan Addendum with MPE system, vapors, GW & NAPL recovery, GW treatment. February 2015 FDEP issues ISR Plan Approval Order. May 2015 RAP received. Includes impervious cap engineering control,</p>

**STATUS of FLORIDA MANUFACTURED GAS PLANT SITES
February 2019**

MGP Address, Off-site MGP Impacted Property Address & Current Activities/Businesses	District	EPA ID# FDEP Site ID # MDERM-RER Id # Folio #	Gas Type & Years of MGP Operation	CERCLA Assessments (PAs, APA's, SIs, etc.)	Comments: Re: EPA, County and/or State Enforcement, Activities, Major Documents and Milestones.
					<p>surface SL excavation and NAPL Remediation Strategy. June 2015 ISR Plan Addendum. August 2015 FDEP issues ISR Plan Modification Approval Order. September 2015 RAP Addendum received. October 2015 FDEP issues conditional RAP Approval Order. February 2016 Quarterly Status Report. November 2015 Construction Completion Report and Conditional RAP Modification Order issued by FDEP. February 2016 Quarterly Status Report. April 2016 Quarterly Status Report (Dec. 2015 to February 2016), May 2016 Quarterly Status Report. and Phase 2 of the MPE implemented. October 2016 Semi-Annual Status and Phase 2 MPE Implementation Construction Completion Report (March 2016 to August 2016). April 2017 Semi-Annual Status Report (Sept. 2016 to Feb. 2017). September 2017 RAP Modification report to FDEP. October 2017 RAP Modification Approval Order Issued by FDEP and Semi-Annual Status Report (March 2017 to August. 2017). April 2018 Semi-Annual Status Report (September 2017 to February 2018). June 2018 Revised BSRA executed. October 2018 Semi-Annual Status Report (March 2018 to August. 2018). 9,568 gallons of NAPL recovered to date. 1,320.5 pounds of dissolved mass recovered to date. November 2018. FDEP concurs with recommends to terminate mobile NAPL recovery in Phase 1 & 2 Treatment Area. FDEP does not agree ceasing UIC sampling of two downgradient wells. RAP is ongoing and site is current.</p>
<p>Aventura Gasworks Dump Aka: Former Binnings Pan American Southwest and south of intersection of NE 28th Ct and NE 185th St., Aventura, FL. 33160-2083</p> <p>Currently Footprint of former MGP dump on portions of Biscayne Academy, Admiral's Port Condominium parking lot, Aventura Landings Condominiums, and a synagogue.</p>	SED	<p>FLN000410532 COM_299239 MDER-RER Case # SW-01705 Folio# 2822030000250</p>	N/A MGP Dump	<p>PSA-11/2009 APA-12/2009 SI-10/2010</p> <p>EPA Recommendation: FA (Low Priority)</p>	<p>Site came to FDEP attention via Dr. Hatheway FMGP web site. Lead is MDERM-RER. Dump area used by a nearby MGP for disposal of MGP wastes (i.e. tars, purifier wastes, etc.). PRP completed source removal of at former Binnings Pan American facility (Merco Group/Aventura Landings) portion of site in 2002. MGP and other wastes removed from a 300 feet x 400 feet excavation area down to limestone bedrock. A smaller area (100 x 150 feet) excavated an additional 2 feet deep. During CERCLA PSA and APA process and review of previous site documents, FDEP determines additional areas of MGP dump still exist. During CERCLA SI, FDEP finds SL and GW contamination by VOCs and SVOCs on Biscayne Institute/Academy & Admiral Point Condominiums parking area. Possible MGP impacts to northwestern edge of Little Lake Maule. MDERM-RER assumes responsibility of Biscayne Institute/Academy (GSOMR, LLC) part of site requiring additional SL sampling and institutional and engineering controls. April 2010 MDERM-RER conducts SL sampling of Biscayne Institute/Academy. September 2012 GSOMR submits Partial Engineering Control Implementation Report to MDERM-RER. Plan documents completion of clean fill engineering control. November 2012. MDERM-RER notifies GSOMR, LLC of fencing restriction requirements and/or an engineering control.</p> <p>Update: December 2013 MDER-RER issues a past due letter to GSOMR/Biscayne Institute Re: Engineering Control Implementation Report. February 2014 GSOMR/Biscayne Institute provides photo documentation of engineering control (Fencing) in Area 2. Biscayne Institute plans on completing fencing Area 3, the North side, by April 2014 and the remaining Area 4, on the West side by May 2014. March 2014 MDERM-RER notes receipt of partial engineering control implementation report. Remaining report covering all areas due May 2014. May 2014 Engineering Control Status Report received. July 2014 GSOMR/Biscayne Institute reports all controls in place. August 2016 MDERM-RER notes receipt of Engineering Control implementation report overdue. April 2018 GSOMR/Biscayne issues HASP for former Biscayne Institute of Health and Living. October 2018 based on review comments from MDERM-RER, GSOMR/Biscayne issues HASP Addendum for former Biscayne Institute of Health and Living. MDERM-RER comments on HASP Addendum Re: air monitoring and not accepting BaPTE ASCTL.</p>
<p>Ft. Lauderdale Gasification Aka: Peoples Gas System Cox Plant 398 NW 7th Ave (SE corner of int. of NW 4th St. and NW 7th Ave.). Ft. Lauderdale, FL 33311 Currently: Vacant grass lot owned by North Broward</p>	SED	<p>FLD984169268 COM_54031</p>	CWG 1930 to 1959	<p>PA-12/1989 PAR/SSI-Phase I 1/1990 No SI completed</p> <p>EPA Recommendation: NFRAP</p>	<p>Site Archived by EPA March 1990. Lead through Broward County Environmental Program.</p> <p>1980 to 1989 August 1985 BEQCB issues NOV for unlawful Discharge of PAHs. December 1985 Phase I Backhoe Test pits. March 1986 Phase II MW installation/GW sampling phase. June 1987 Phase III Activities Report.</p> <p>1990 to 1994 June 1991 CAR. November 1992 MGP impacted SL removal (62.7 tons) from three areas conducted. Quarterly GW Monitoring. March 1994 Fourth Quarter GW Sampling Report. After Fourth Quarter GW Sampling results, Site given a NFA by Broward County in March 1994. No further updates.</p>

**STATUS of FLORIDA MANUFACTURED GAS PLANT SITES
February 2019**

MGP Address, Off-site MGP Impacted Property Address & Current Activities/Businesses	District	EPA ID# FDEP Site ID # MDERM-RER Id # Folio #	Gas Type & Years of MGP Operation	CERCLA Assessments (PAs, APA's, SIs, etc.)	Comments: Re: EPA, County and/or State Enforcement, Activities, Major Documents and Milestones.
Hospital District and adjacent to Broward Health Medical Center Parking area.					
<p>Peoples Gas System/TECO Inc. (North Miami Beach) 15779 West Dixie Hwy N. Miami Beach, FL 33162-6037</p> <p>This MGP site consists of two parcels divided by West Dixie Highway. East Parcel contained most of MGP processing apparatus (retort building, tar separator pit, scrubbers, purifiers, tar storage tank, relief holder, etc.) West Parcel had a relief storage and storage holder tank.</p> <p>Currently: West Parcel -Vacant Land Incl. Retention Pond East Parcel TECO Peoples Gas</p>	SED	FLD980843163 COM_57754 MDERM-RER Case # IW5-01444/File-1343	CWG 1929 to 1959	PA-11/1985 PAR 1/1990 SI 3/1990 Reassessment 1/1994 SIP 4/1995 EPA Recommendation: NFRAP	<p>Site given an NFA in May 1995 and archived by EPA January 1996. Lead through FDEP SED and MDERM-RER.</p> <p>1980 to 1989 October 1984 Routine inspection of bulldozing for landfill discovers coal tar. MDERM-RER issues NOV & Orders for Corrective Action. December 1984 Proposal for Hydrogeological Evaluation of SL and GW Contamination. January 1985 Revised Proposal for Hydrogeological Evaluation of SL and GW Contamination. May 1985 Report Hydrogeological Study. October 1995 CAP. February 1986 FS Plan Outline. July 1986 Phase II Activities letter report. September 1986 Revised CAP (Field Sampling and Analysis QAPP). February 1987 Revised Field Sampling and Analysis QAPP. April 1987 CO Executed between PGS, MDERM-RER and FDEP. October 1987 Report of Contamination Assessment Activities in Partial Fulfillment of CAP received. August 1988 CAR. September 1989 Preliminary RAP.</p> <p>1990 to 1999 – April 1991 Human Health and Environmental Risk Assessment report. July 1991 Status report. March 1992 Data Summary report received. July 1992 Revised Human Health and Environmental Risk Assessment report. December 1993 FS report. August 1993 Focused Risk Assessment for Chemicals Detected in GW report. June 1996 CARA. January 1999 Supplemental CARA received. October 1999 Supplemental CARA II.</p> <p>2000 to 2009 – March 2000 Revised Risk Assessment report. August 2000 Revised WP for Field Activities. January 2001 RI report. May 2002 RI Addendum report. July 2003 RI Addendum II report. September 2005 revised RAP. October 2005 Pumping Test Plan. May 2006 Pumping Test Summary letter report. August 2006 Pumping Test Plan Addendum. July 2007 revised Pumping Test Summary letter report. March 2009 Off-site notification package completed and letter to adjacent property owners sent. May 2009 Remedial Approach WP. November 2009 Remedial Characterization Report and Biosparge Pilot Plan.</p> <p>2010 to March 2013 – October 2010 Biosparge Pilot Test report. March 2012 Remedial Characterization Report Addendum. November 2012 Supplemental SL sampling Plan for West Parcel Received. December 2012 Proposed Source Removal Report. March 2013 Remedial Characterization Report Addendum/SL Initial RAP. March 2013 Summary Update, CO between FDER, MDERM and PRP. Updated by SED April 29, 2009, Extensive SL removal over the years. Additional site assessment activities by PRP, including SL borings and deeper GW monitoring and GW elevation from all wells. Meeting held with PRP, MDERM-RER & FDEP December 2008. Additional delineation needed & options to deal with contamination beneath major railroad corridor. Status Report due June 2009-Remedial Strategy is next step. MDERM-RER is co-reviewing project activities with the FDEP SED. Note that Dixie Highway, US 1, was widened. As of January 2013, Delineation of SL & GW plumes mostly completed to propose and approve a Remedial strategy for the Western Parcel. A BSRA is being pursued for the Western Parcel. Removal of contaminated SLs in the Western Parcel has been proposed with hydra-seeding. Trees have been removed prior to initiating the Source Removal activities.</p> <p>Update: August 2013 Revised SL IRA Plan. February 2104 Monthly Progress Report brief of dust and air monitoring and SL removal activities. March 2014 Third Monthly Progress Report brief of dust and air monitoring, SL removal activities and liner/cap installation. 48,796 tons of MGP impacted SL excavated/removed as of February 2014; RAP for GW received. April 2014 Supplement to RAP Addendum. September 2014 West Parcel Surface SL Remedial Completion Report. 53,919 tons of MGP impacted SL excavated/removed. November 2014 RAP Addendum for GW. August 2015 Revised RAP Addendum for GW. November 2015 RAP in Support of NFA with Conditions concurrence by MDERM-RER. December 2016 Construction Completion Report for BS/SVE System West Parcel. April 2017 RAP Approval Order issued by FDEP. August 2017 Revised Construction Completion Report for BS/SVE System West Parcel. October 2017 RAP Approval Order in Support of NFA</p>

**STATUS of FLORIDA MANUFACTURED GAS PLANT SITES
February 2019**

MGP Address, Off-site MGP Impacted Property Address & Current Activities/Businesses	District	EPA ID# FDEP Site ID # MDERM-RER Id # Folio #	Gas Type & Years of MGP Operation	CERCLA Assessments (PAs, APA's, SIs, etc.)	Comments: Re: EPA, County and/or State Enforcement, Activities, Major Documents and Milestones.
					with Conditions -UIC issued by FDEP. January 2018 Revised East Parcel SLs Closure Plan for COC-Impacted SLs (ASCTL for BaP received by MDERM-RER. June 2018 MDERM-RER approves RAP Construction East Parcel Drawings. ,
<p>Peoples Gas/Miami Rinker Aka: CEMEX-Downtown Miami-Ready Mix 1600 North Miami Avenue Miami, FL 33136-2017</p> <p>Site divided into two parcels by Florida East Coast RR ROW. East parcel: MGP apparatus included plant retort building, tar well, purifiers, relief holders, oil storage & light oil condenser. West parcel included: two Gas holders and additional purifiers.</p> <p>Currently: CEMEX-Downtown Miami Plant (East Parcel) and TECO Peoples Gas (West Parcel).</p>	SED	FLD984169219 COM_71973 8505868 0131250481140 1385055868 138505687 MDERM-RER Case # IW5- 03225/File2984 UT- 3223/File9168	W, CWG	PA-2/1990 EPA Recommendation: NFRAP	<p>Site lead by MDERM-RER.</p> <p>1980 to 1989 – February 1987 CAR. January 1988 Revised CAR. January 1989 Status Report, Supplemental Contamination Assessment. March 1989 Supplemental CAR.</p> <p>1990 to 1999 – September 1992 Hydrogeologic Data Collection for Risk Assessment report. February 1993 Risk Assessment report. October 1993 Well Installation report. November 1994 Summary of Phase II Work. March 1995 CAR. September 1995 revised CAR. December 1995 CARA. November 1996 CARA II. April 1997 CARA III. August 1997 Supplemental Information, CARA III. January 1998 Product Recovery Pilot Test Proposal. July 1998 Product Recovery Pilot Test Status and GW Flow Update report. August 1999 Monitoring, Piezometer and Test Well Locations and Elevations report (Rev. 3). October 1999 Historic Land Use Research Report. 1999 Field Observations of Product Thickness Measurements and Product Recovery reports.</p> <p>2000 to 2009 - 2000 – 2006 Field Observations of Product Thickness Measurements and Product Recovery reports. August 2006 Plume Differentiation Investigation report. February 2007 Previous Investigation Summary Report. June 2007 March/April 2007 Assessment Activities report. October 2008 SARA. August 2009 Off-site notification package completed and letter to adjacent property owners sent.</p> <p>2010 to March 2013 - November 2010 Pilot Study WP for FP Recovery and Initial VI Screening Results/Recommended VI Approach/Plan Area of CEMEX Control Room received. July 2011 Report of Indoor VI Investigation. December 2012 Remedial GW Report. February 2013 Off-site (North/South ROWs NW16th St.) SL Initial Remedial Action Completion report. March 2013 update, Enforcement was pending by MDERM-RER. However, petroleum waste detected & referred to State Petroleum Cleanup program. Also, currently in State Petroleum tanks program. SARA for MGP portion of site submitted to MDERM-RER in October 2008. SARA review comments March 2009. SARA 2/RAP due May 2009. Likely co-mingled petroleum and coal tar GW plume. June 2009 CEMEX moves off-site. July 2009 Pilot Study Work Plan submitted Re: FP NAPL removal. February 2012 MDERM-RER requests ISR. June 2012 supplemental surface SL results submitted. September 2012 MDERM-RER notifies PRP that GW plume not fully delineated. December 2012 Remedial GW report issued. March 2013 MDERM-RER requests additional information Re: report.</p> <p>Update: April 2013 BS/SVE Pilot Test WP. October-November 2013 RAP received. January 2014 RAP Addendum & Response to MDERM-RER Review Comments. April 2014 Supplement to RAP Addendum. June 2014 In Situ Stabilization/Solidification Treatability Study Plan. July 2014 Results of Supplemental Surface SL Analyses for PAHs including BaPTE & Proposed Remedial Plan. August 2014 Air Monitoring Plan. February 2016 Report of Results of Off-site GW Sampling /Analyses Event (Sept./Oct. 2015) for Predominant Petroleum COCs & Further Biogeochemical Characterization. February 2016 Report of 2016 (Feb. 6, 2016) Annual FP Measurement & Recovery Event. January 2018. Summary Explanation of Revised Off-site Soils Closure Plan & Request for Assistance from Miami-Dade Co. and City of Miami. Letter Report.</p>
<p>West Palm Beach MGP Aka: Florida Public Utilities Inc. 209 2nd St. West Palm Beach, FL 33413- 1766</p>	SED	FLD984169201 COM_48354 630-1	W, CWG 1924 to 1960	PA-3/1989 Desk-top SI- 5/1991 SIP-5/1995 Reassessment 7/2000	<p>Site lead through FDEP SED Private Party Lead Cleanup. MGP and potential petroleum contamination likely co-mingled.</p> <p>1990 to 1999 – February 1990 PCAP. July 1990 PCAR. April 1991 CO executed between FDER and FPUC. May 1991 CAP. October 1992 Preliminary Report. August 1993 WP for Additional GW Sampling to Complete CAR. December 1995 CAR.</p> <p>2000 to 2009 - April 2000 CARA. December 2001 Supplemental CARA. September 2002 Plan for Additional Contamination Assessment Activities received. October 2002 SL Sampling and Analysis Plan. September 2003 Comprehensive SL and GW Assessment report. October</p>

**STATUS of FLORIDA MANUFACTURED GAS PLANT SITES
February 2019**

MGP Address, Off-site MGP Impacted Property Address & Current Activities/Businesses	District	EPA ID# FDEP Site ID # MDERM-RER Id # Folio #	Gas Type & Years of MGP Operation	CERCLA Assessments (PAs, APA's, SIs, etc.)	Comments: Re: EPA, County and/or State Enforcement, Activities, Major Documents and Milestones.
<p>Site divided into two parcels by 2nd Street. South parcel had the majority of MGP apparatus including retort building (with gas producers), Gas tanks, tar cooker, tar separator, Hortonsphere tank, gasometer tank, purifiers, fuel oil tanks and oil tank. North parcel included two Gas holders. Offsite contamination: East parcel.</p> <p>Currently: South parcel - FPUC Office/Station. North Parcel - Parking area for FPUC employees and customers. East parcel: Vacant land & remediation system trailer.</p>				<p>EPA Recommendation: OCA</p>	<p>2004 revised Plan for Additional Contamination Assessment. September 2005 Off-site notification package completed and letter to adjacent property owners sent. October 2006 Off-site Surface SL sample results (2006) letter report. November 2006 FS report received by FDEP. June 2008 revised FS. April 2009 Remedial Action Order executed. May 2009 WP for the Pre-Remedial Design Studies for In Situ GW Treatment received. August 2009 Pre-Remedial Design WP for remedial Alternative 5. Alternative 5 includes surface SL excavation, Cap placement, hydraulic barrier (SL bentonite slurry wall) & hydraulic controls. September 2009 GW Modeling report. October 2009 GW Modeling report. Revision 1. December 2009 FS report Revision 2.</p> <p>2010 to March 2013. December 2010 - IRAP for East Parcel. March 2011 IRAP Addendum for East Parcel. May 2011 FDEP issues Approval Order/Modification of Approval Order for Pilot Study for East parcel & EPA START Removal Investigation (Soil Vapor Intrusion Study) letter report. October 2011 IRAP Supplement for East Parcel. March 2012 Demolition Report for the East Parcel. April 2012 Limited Scope IRAP Approval Order issued by FDEP & Semi-Annual GW Monitoring report (Last 2 Quarters of 2011) received. May 2012 Critical Path Analysis- Remedial Action for the West Parcel & Conceptual Plan for Remediation of West Parcel received by FDEP. October 2012 Semi-Annual GW Monitoring report (First 2 Quarters of 2012) received. January 2013 Semi-Annual GW Monitoring report (Last 2 Quarters of 2012) received. As of March 2013 update, CO State action under FDEP SED. Updated by PAW April 2009, Additional on-going site assessment activities by PRP, including SL and GW assessment, FS submitted in November 2006, comments sent, revised FS prepared, in review and options being considered as of April 2009. Following the submittal of a FS, FPU was merged with Chesapeake Utilities Corporation. Thereafter, the approach to cleanup took a more aggressive path by proposing a pilot project for the Eastern parcel, while monitoring the GW. An IRAP has been approved for the eastern parcel on 4/8/12. Based on the results of this Pilot project, a RAP would be submitted for the rest of the site. The SVE and sparging into the shallow points started in 1/2013. GW Monitoring continues.</p> <p>Update: November 2015 May 2017, BS/SVE Startup & GW Monitoring Annual Report. East Parcel August 2018 BS/SVE & GW Monitoring Annual Reports East Parcel. January 2019. Meeting held between FDEP and FPUC. FPUC presents plan (Phases 1 & 2) for proceeding with remediation on the West Parcel. FDEP allows FPUC to proceed with MGP related rehabilitation and to hold up any petroleum restoration program activities as long as FPUC complies with the site rehabilitation requirements of Chapter 62-780, FAC.</p>
<p>Ft. Myers Coal Gasification Plant Aka: Ft Myers MGP 2000 Cranford Ave Formerly 2600 Anderson Avenue Ft. Myers, FL 33916-4006</p> <p>Currently: IMAG History and Science Center.</p>	SD	<p>FLD984169458 COM_74062 BF369901000 BF369901001</p>	<p>W</p> <p>1924 to 1959</p>	<p>PA-6/1989 SI- 12/1992 SIP June 1993 Reassessment 10/2002</p> <p>EPA Recommendation: NFRAP</p>	<p>Site lead through FDEP SD</p> <p>1990 to 1999 - February 1993 CO between City of Ft Myers and FDER. June 1993 CAP. September 1993 CAP approved by FDEP. March 1994 Tank Demolition & Removal report-Gas Holder/Gasometer removed. 23,500 gallons of MGP related contaminated water and coal tar removed.. November 1995 CAR issued. July/August 1996 CARA. September 1996 CAR approved by FDEP and proceed to RAP. After CARA, SL excavation removed 10,000 tons of MGP impacted SLs.</p> <p>2000 to 2009 - Source removal and GW treatment and monitoring conducted early 2000's. December 2000 Plan to Conduct Pre- Remediation Assessment. March 2001 BSRA signed between City of Ft Myers and FDEP. Site designated as a Brownfield and remediating under a BSRA. July 2001 Pre-Remediation Assessment Report. October 2001 RAP issued. December 2001 FDEP issues RAP Order. June 2002, dual-phase vacuum enhanced treatment system commenced operation. 300,000 gallons of water treated. October 2002 GW Monitoring and Startup Report. Portion of site redeveloped as Imaginarium children's museum (now IMAG History and Science Center). February 2003 GW Monitoring and Startup Report. June 2003 & September 2003 GW Monitoring and Performance Reports. May 2004 GW monitoring report. Remediation successfully completed in 2004. NFA with Institutional Controls proposed in 2005; Impervious soil cap constructed. City of Ft Myers recorded an approved restrictive covenant. Update: January 2011 NFA with institutional controls and SRCO with conditions issued.</p>
<p>Key West Gas & Electric (Key West MGP#1)</p>	SD	<p>FLN000410751 COM_303264</p>	<p>O</p>	<p>PSA-1/2011 APA-10/2011</p>	<p>Site lead through FDEP SD. MGP operated late 1880's to early 1890's before relocating to Catherine Street (Key West MGP#2). Separate State petroleum program involvement under Abandoned Diesel Plant Key West site.</p>

**STATUS of FLORIDA MANUFACTURED GAS PLANT SITES
February 2019**

MGP Address, Off-site MGP Impacted Property Address & Current Activities/Businesses	District	EPA ID# FDEP Site ID # MDERM-RER Id # Folio #	Gas Type & Years of MGP Operation	CERCLA Assessments (PAs, APA's, SIs, etc.)	Comments: Re: EPA, County and/or State Enforcement, Activities, Major Documents and Milestones.
<p>Aka: Keys Energy Services Substation Aka: Abandoned Diesel Plant Key West 101-111 Geraldine St. & 709 Fort St. Key West, FL 33040</p> <p>Currently: Keys Energy Services Key West Diesel Substation/Shop Area.</p>			1884 to 1890's	SI- 8/2012. EPA Recommendation: NFRAP	<p>1990 to 1999 – October 1991 CAR Abandoned Diesel Plant Key West. July 1992 CARA Abandoned Diesel Plant Key West. October 1992 RAP Abandoned Diesel Plant Key West. May 1993 RAP Addendum Abandoned Diesel Plant Key West. June 1993 RAP Modification Abandoned Diesel Plant Key West. July 1993 FDEP approves RAP, RAP Addendum and RAP Modification for Abandoned Diesel Plant Key West site. April 1994 to July 1995 First to Third Quarter GW Monitoring reports Abandoned Diesel Plant Key West. CERCLA SI summary - MGP/petroleum impacts (i.e. staining, odors) noted in SL & GW during CERCLA SI. Arsenic, lead & PAHs (benzo [a] pyrene, dibenzo [a, h] anthracene) detected in SL. Isopropylbenzene, acenaphthene and naphthalene were detected in on-site GW above GCTLs. Site did not score on HRS. November 2012 Site referred to FDEP SD for possible enforcement.</p> <p>Update: July 2013 Phase I ESA Report. October 2013 Phase II ESA Report. March 2014 SAR to FDEP. August 2014 SSAR. December 2014 Year 1, Quarter 2 NAM Report. March 2015 Year 1, Quarter 3 NAM Report. July 2015 Year 1, Quarter 4 NAM Report. March 2016 Declaration of Restrictive Covenant. April 2016 Conditional SRCO (NFA RMO III) issued by FDEP.</p>
<p>Former Key West Gasification Plant (Key West MGP#2) Aka: Suburban Propane 726 Catherine Street Key West, FL 33040-3226</p> <p>Currently: Still Suburban Propane.</p>	SD	FLD984172189 ERIC_6321 COM_317676 616-1	CWG 1912 to 1940s	PA-8/1990 Desktop SI- 09/1993 EPA Recommendation: NFRAP	<p>Site Archived by EPA October 1993. Site lead through FDEP SD.</p> <p>1990 to 1999 - February 1993 PCAR completed. SL contamination confirmed. Underlying Miami Oolite limestone likely impacted. NAPL discovered. Coal tar diesel fuel wastes detected. No known source removal. Suburban Propane current owner. No viable PRP.</p> <p>2000 to March 2013 - PRP search by FDEP in early 2000's did not yield a viable PRP associated with MGP operations. FPUC and Suburban Propane later identified as RPs. 2009-10, FDEP SIS conducts PCA. September 2011 SIS PCAR released, PAHs, BETX, TRPHs & Sr found above GCTLs in GW. TRPHs & BaPTE found in SL above SCTLs. September 2011 Letter WP for additional GW and SL assessment & GW monitoring program. May 2012 First Semi-Annual GW Monitoring Report. October 2012 RAP approval Order issued by FDEP for one-year NAM program. First NAM event March 2013.</p> <p>Update: November 2014 Second Semi-Annual NAM Report. June 2015 Semi-Annual NAM Report. April 2016 Semi-Annual NAM Report. October 2016 Semi-Annual NAM Report. March 2018 Semi-Annual NAM Report. April 2018 FDEP concurs with PRP contractor recommendation for continued NAM</p>

Links to electronic databases for additional information:

FDEP Oculus: <http://dwmedms.dep.state.fl.us/Oculus/servlet/login>

FDEP Information Search Portal <http://prodenv.dep.state.fl.us/DepNexus/public/searchPortal>

Miami-Dade Department of Regulatory Economic Resources (MDERM-RER) Online Environmental Records web site <http://ecmrer.miamidade.gov:8080/>

Broward County Site Inventory Report <http://www.broward.org/Environment/CONTAMINATEDSITES/Pages/SiteLocations.aspx>

STATUS of FLORIDA MANUFACTURED GAS PLANT SITES
February 2019

Key to Abbreviations and Acronyms

AOC	= Administrative Order on Consent (EPA)
APA	= Abbreviated Preliminary Assessment
ASCTL	= Alternative Soil Cleanup Target Level
AS/SVE	= Air Sparge/Soil Vapor Extraction
ARARs	= Applicable or Relevant and Appropriate Requirements
As	= Arsenic
BEQCB	= Broward Co. Environmental Quality Control Board
BaPTE	= Benzo [a] pyrene toxic equivalents
BSRA	= Brownfield Site Rehabilitation Agreement
BS/SVE	= Bio-sparging/soil vapor extraction
BTEX	= Benzene, Ethyl benzene, Toluene & Xylene
C	= Coal Carbonization – Early MGPs. Carbonizing coal in retort to produce hydrogen, methane & carbon monoxide (~ 500 BTU)
CAR	= Contamination Assessment Report
CARA	= Contamination Assessment Report Addendum
CD	= Central District
CN	= Cyanide
CO	= Consent Order
COC	= Contaminants of Concern.
COJ	= City of Jacksonville
COSA	= City of St. Augustine
COT	= City of Tallahassee
CWG	= Carbureted Water Gas (i.e., Lowe Process)- Produced by enriching gas by injecting oil into MGP carburetor. (> 1,000 BTU)
Cyn	= Cyanide
DERM	= Dade Co. Environmental Resources
Desktop	= Used PRP data
DNAPL	= Dense non-aqueous phase liquids
DOH	= Department of Health
DSAP	= Design Sampling & Analysis Plan
DSAR	= Design Sampling & Analysis Report
DW	= Drainage well
EE/CA	= Engineering Evaluation/Cost Analysis
ESA	= Environmental Site Assessment
ESI	= Expanded Site Inspection (CERCLA)
FA	= Further Action
FDER	= Florida Dept. of Environmental Regulation
FDEP	= Florida Dept. of Environmental Protection
FEC	= Florida East Coast Railroad Co.
FMGP	= Former Manufactured Gas Plant
FP	= Free Product
FPC	= Florida Power Corporation
FPUC	= Florida Public Utilities Corp.
FP&L	= Florida Power and Light
FS	= Feasibility Study

**STATUS of FLORIDA MANUFACTURED GAS PLANT SITES
February 2019**

GAC	= Granulated Active Carbon
GW	= Groundwater
HASP	= Health and Safety Plan
HRS	= Hazard Ranking System
IA	= Integrated Assessment
IRA	= Interim Remedial Action
IRAP	= Interim Remedial Action Plan
IRAR	= Interim/Initial Remedial Action Report
ISR	= Interim Source Removal
ISS	= In-Situ Stabilization
JTA	= Jacksonville Transportation Authority
LNAPL	= light non-aqueous phase liquids
LSI	= Listing Site Investigation
MDERM	= Miami-Dade Co. Dept. of Regulatory and Economic Resources Div.of
-RER	Environmental Resources Management
MOU	= Memorandum of Agreement
MGP	= Manufactured Gas Plant
MNA	= Monitoring Natural Attenuation
MOP	= Monitoring Only Plan
MPE	= Multi-Phase Extraction
NAM	= Natural Attenuation Monitoring
NAPL	= Non Aqueous Phase Liquid
NED	= Northeast District
NFA	= No Further Action
NFRAP	= No Further (CERCLA Activty) Remedial Action Planned
NOAA	= National Oceanic and Atmospheric Administration
NOV	= Notice of Violation
NPL	= National Priorities Listing
NWD	= Northwest District
O	= Oil Gas - Pyrolysis of naptha & heavier petroleum oils to produce gas rich in methane, ethane, hydrogen & light hydrocarbons (i.e., Pintsch process) (~ 1,000 BTU)
OCA	= Other Cleanup Activity (EPA Deferred to State or County Lead)
OGPS	= Old Gas Plant Site
ORC	= Oxygen Release Compounds.
ORT	= Operations Response Team (Now SIS)
OU	= Operable Unit
PA	= Preliminary Assessment (CERCLA)
PAHs	= Polynuclear aromatic hydrocarbons
PAR	= Preliminary Assessment Reassessment
PARM	= Post Active Remediation Monitoring
PAW	= Paul A. Wierzbicki FDEP WPB District Office
PCA	= Preliminary Contamination Assessment
PCAR	= Preliminary Contamination Assessment Report
PERA	= Miami- Dade County Permitting, Enforcement & Regulatory Affairs
PGS	= Peoples Gas Service
PRP	= Potential Responsible Party
PSA	= Pre-CERCLA Screening Assessment
QAPP	= Quality Assurance Project Plan

STATUS of FLORIDA MANUFACTURED GAS PLANT SITES
February 2019

RA	= Risk Analysis
RAI	= Request for Additional Information
RAP	= Remedial Action Plan
RI	= Remedial Investigation
RMO	= Risk Management Option
ROW	= Right -of- Way
RP	= Responsible Party
RR	= Rail Road
ROD	= Record of Decision
ROW	= Right -of-Way
RP	= Responsible party
RPM	= Remedial Project Manager
SAR	= Site Assessment Report
SARA	= Site Assessment Report Addendum
SSAR	= Supplemental Site Assessment Report
SD	= South District
Sed	= Sediment
SI/SSI	= Site Inspection/Site Investigation (CERCLA)
SIP	= Site Inspection Prioritization
SIS	= Site Investigation Section
SL	= Soil
SED	= Southeast District
Sr	= Strontium
SRCO	= Site Rehabilitation Completion Order
SRCR	= Site Rehabilitation Completion Report
SVE	= Soil Vapor Extraction
SW	= Surface Water
SWD	= Southwest District
TM	= Technical Memorandum
TRPHs	= Total Recoverable Petroleum Hydrocarbons
UIC	= Underground Injection Control
Unk	= Unknown
VI	= Vapor Intrusion
W	= Water Gas ("Blue Gas") - MGP process of steaming coke or coal to produce hydrogen,& carbon monoxide (~ 300 BTU).
WP	= Work Plan

**STATUS of FLORIDA MANUFACTURED GAS PLANT SITES
February 2019**

**Florida MGP
Summary Status February 3, 2019**

Sites still in Site Assessment Stage¹	Sites with completed IRA, Soil Removal, Solidification, CAP and/or Free Product Recovery	Remedial Activities on-going²	Natural Attenuation Monitoring/ Post Active Remediation Monitoring On-going	Remediation Complete-NFA or SRCO issued³
3	18	17	12	12

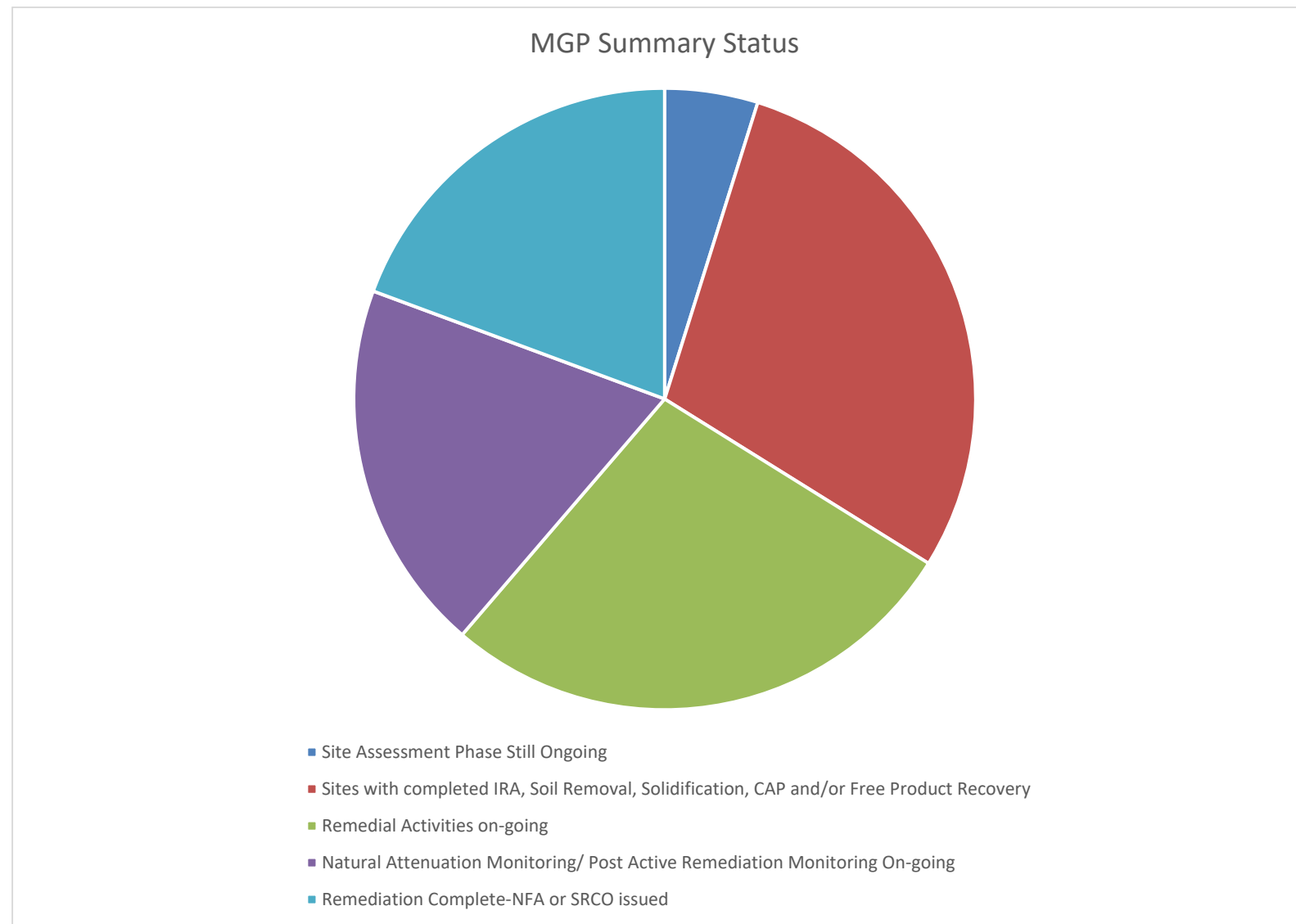
¹ Includes Main Street MGP (MGP [Former Hotel] portion), Pintsch Compressing Gas Co. and Key West Gasification (Key West MGP #2)

² All remedial efforts for the MGP sites are funded by potential responsible parties (PRP) through either State Consent Orders or EPA Agreement on Consent Orders.

³The twelve completed Remediation Sites are: Bradenton Gasification, Palatka Gas Works, Riverfront Park MGP (Palatka), St. Augustine Gas Plant, the two Deland Sites, Ft Lauderdale Gasification (Cox Plant), Ft Myers Gasification Plant, Key West Gas and Electric, Lakeland Gasification, Pensacola Gasification and Peoples Gas-Suncoast Dome sites.

J. McCarthy, PG
FDEP-02/03/19

**STATUS of FLORIDA MANUFACTURED GAS PLANT SITES
February 2019**



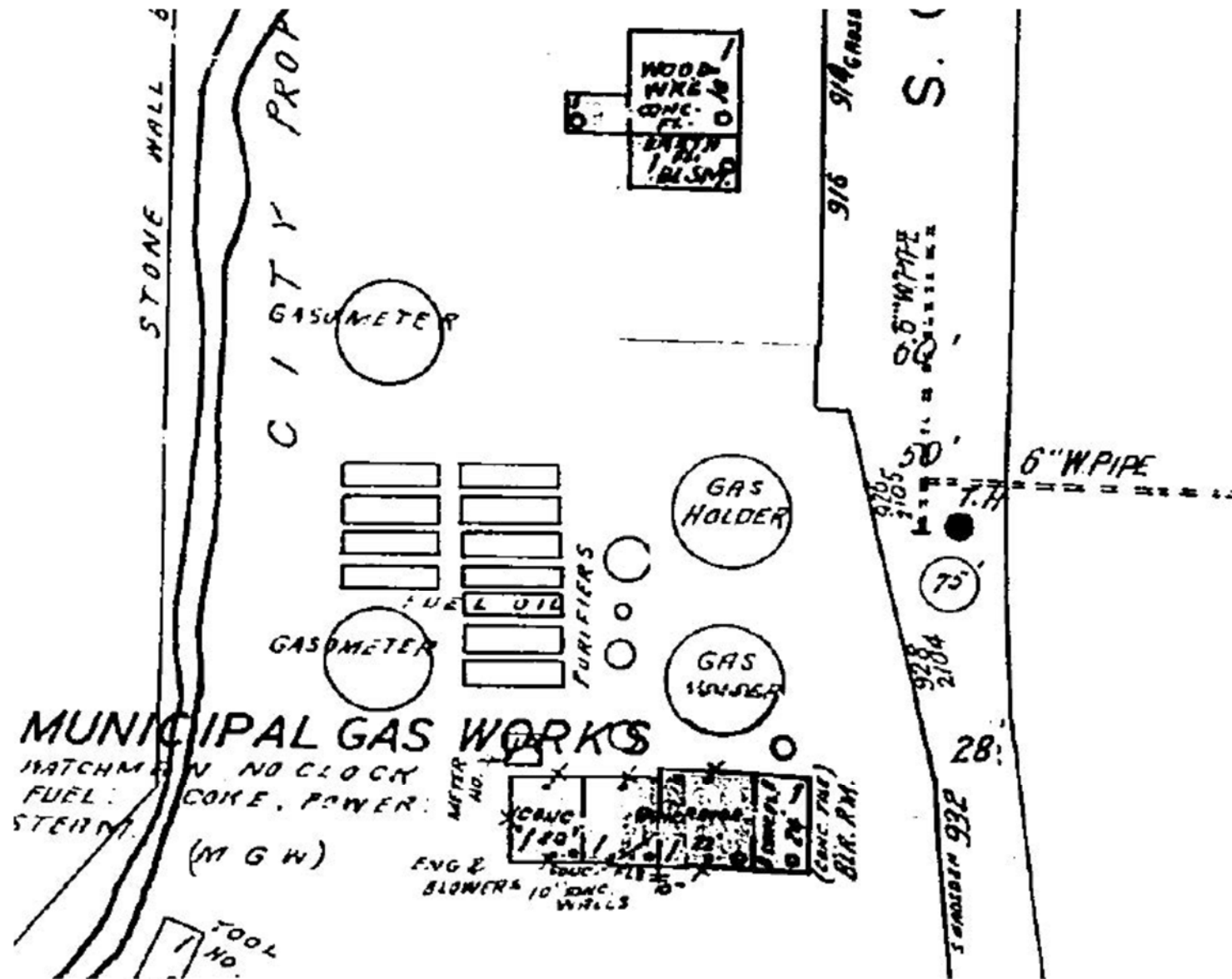
**STATUS of FLORIDA MANUFACTURED GAS PLANT SITES
February 2019**

Florida MGPs



City of Tallahassee MGP (aka: Cascade Park Gasification Plant) Hortonspheres/Gas Holders, Centennial Field to Left (Date Unknown)

STATUS of FLORIDA MANUFACTURED GAS PLANT SITES
February 2019

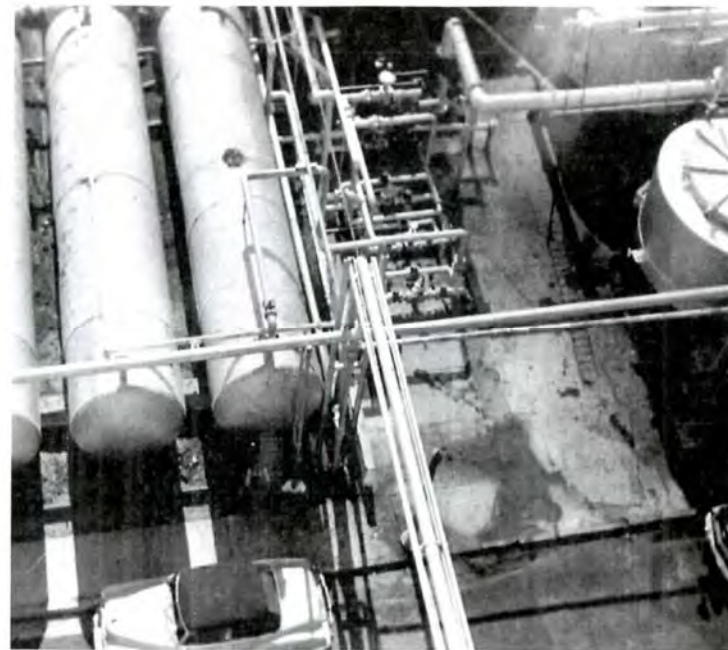


Sanborn Insurance Map - Tallahassee Municipal Gas Works - May 1942
Courtesy of Florida Department of State Division of Library & Information Services
Sanborn Map Collection 1867 - 1970

**STATUS of FLORIDA MANUFACTURED GAS PLANT SITES
February 2019**



Peoples Gas Storage Tank-Miami-Florida (Date Unknown)



**West Palm Beach MGP Aka: Florida Public Utilities Inc
Gas tanks and MGP apparatus**

**STATUS of FLORIDA MANUFACTURED GAS PLANT SITES
February 2019**

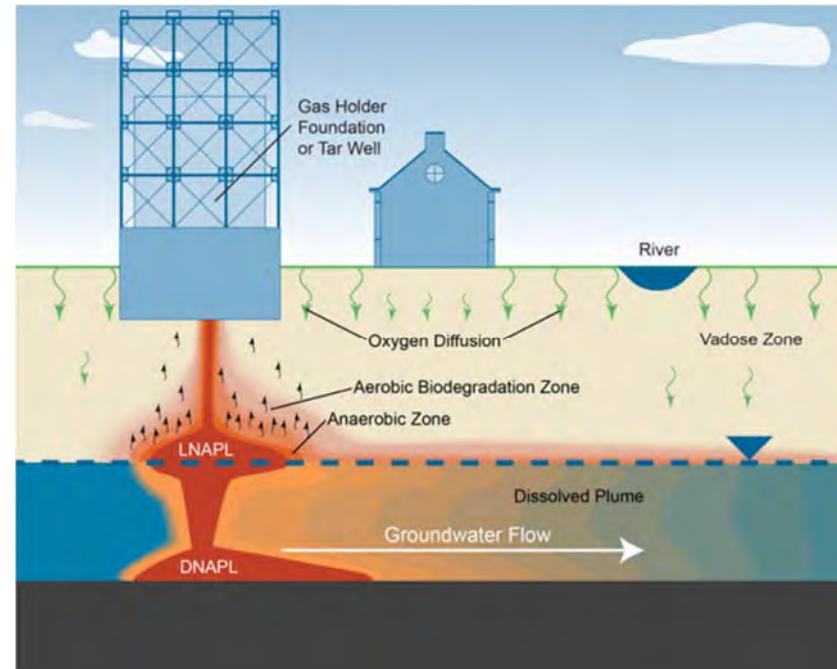
Courtesy of FPU



**West Palm Beach MGP Aka: Florida Public Utilities Inc
Retort Building, Purifiers, Gasometer tank, Fuel Oil tank
Courtesy of FPU**

**STATUS of FLORIDA MANUFACTURED GAS PLANT SITES
February 2019**

Typical MGP Impacts to Groundwater



Courtesy of ITRC

MGP Wastes



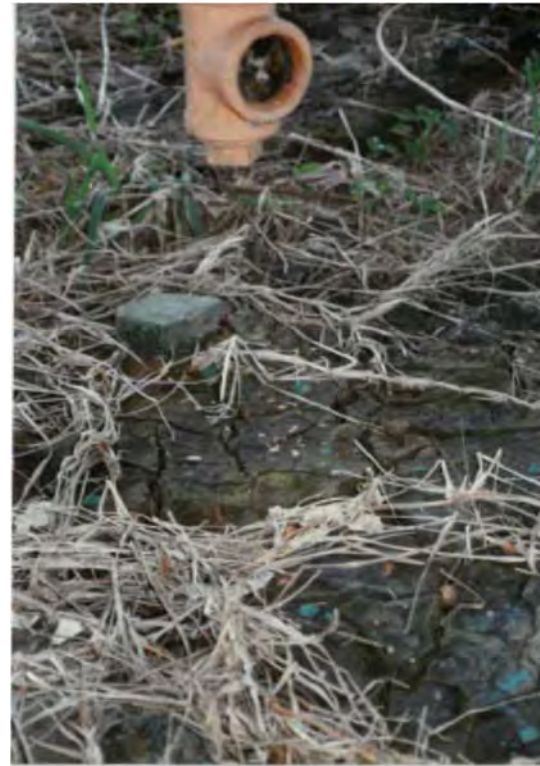
**STATUS of FLORIDA MANUFACTURED GAS PLANT SITES
February 2019**

**Aventura Gas Works Dump, Miami Dade County
MGP soil impacts**



May 1990 SI Coal tar seeping from old piping at Central Florida Gas Former Retort Building Winter Haven, Florida

**STATUS of FLORIDA MANUFACTURED GAS PLANT SITES
February 2019**



**May 1990 SI Central Florida Gas Gasification Plant – Winter Haven, Florida
Hardened coal tar under Hortonsphere/Gas Holder**



July 1990 SI - MGP waste stained soil cores. West Palm Beach MGP Aka: Florida Public Utilities Inc

**STATUS of FLORIDA MANUFACTURED GAS PLANT SITES
February 2019**



Tampa MGP Rotosonic core sample containing tar NAPL blebs, stringers and pore space saturation in a calcareous clay unit courtesy Arcadis

**STATUS of FLORIDA MANUFACTURED GAS PLANT SITES
February 2019**



A. James McCarthy at Central Florida Gas-Winter Haven & Sphere Tank May 1990

STATUS of FLORIDA MANUFACTURED GAS PLANT SITES
February 2019

References

Villaume, J, Lowe, P., Unites, D. 1983. Proceedings of the Third National Symposium on Aquifer Restoration and Groundwater Monitoring - Recovery of Coal Gasification Wastes: An Innovative Approach. <http://www.gbv.de/dms/tib-ub-hannover/246895950.pdf>

Harkins, S., et al. February 1988. U.S. Production of Manufactured Gases: Assessment of Past Disposal Practices. EPA/600/2-88/012. Research Triangle Institute.
<https://nepis.epa.gov/Exe/ZyNET.exe/20012O71.TXT?ZyActionD=ZyDocument&Client=EPA&Index=1986+Thru+1990&Docs=&Query=&Time=&EndTime=&SearchMethod=1&TocRestrict=n&Toc=&TocEntry=&QField=&QFieldYear=&QFieldMonth=&QFieldDay=&IntQFieldOp=0&ExtQFieldOp=0&XmlQuery=&File=D%3A%5Czyfiles%5CIndex%20Data%5C86thru90%5CTxt%5C00000015%5C20012O71.txt&User=ANONYMOUS&Password=anonymous&SortMethod=h%7C-&MaximumDocuments=1&FuzzyDegree=0&ImageQuality=r75g8/r75g8/x150y150g16/i425&Display=hpfr&DefSeekPage=x&SearchBack=ZyActionL&Back=ZyActionS&BackDesc=Results%20page&MaximumPages=1&ZyEntry=1&SeekPage=x&ZyPURL>

Environmental Research & Technology, Inc. and Koppers Co., Inc. September 1984. Handbook on Manufactured Gas Plant Sites.

Gas Research Institute. October 1987. Management of Manufactured Gas Plant Sites Volume 1: Wastes and Chemicals of Interest. GRI-87/0260.1

Hatheway, Ph.D, Allen. 2002. "Geoenvironmental protocol for site and waste characterization of former manufactured gas plants; worldwide remediation challenge in semi-volatile organic wastes". Elsevier Science B.V Engineering Geology 64 (2002) pp 317-338. http://www.hatheway.net/Downloads/FMGP_Protocol_In_Engineering_Geology.pdf

Hatheway, Ph.D, Allen. 2012. Remediation of Former Manufactured Gas Plants and Other Coal Tar Sites. CRC Press.

Buzick, B. to District Mangers. September 6, 1985. FDER interoffice memorandum Re: Former Gas Manufacturing Facilities.

EPA. February 1985. Survey of Town Gas and By-Product Production and Locations in the U.S. (1880 – 1950). Air and Energy Engineering Research Lab. EPA-600/7-85-004
<https://nepis.epa.gov/Exe/ZyNET.exe/20012XT3.TXT?ZyActionD=ZyDocument&Client=EPA&Index=1981+Thru+1985&Docs=&Query=&Time=&EndTime=&SearchMethod=1&TocRestrict=n&Toc=&TocEntry=&QField=&QFieldYear=&QFieldMonth=&QFieldDay=&IntQFieldOp=0&ExtQFieldOp=0&XmlQuery=&File=D%3A%5Czyfiles%5CIndex%20Data%5C81thru85%5CTxt%5C00000012%5C20012XT3.txt&User=ANONYMOUS&Password=anonymous&SortMethod=h%7C-&MaximumDocuments=1&FuzzyDegree=0&ImageQuality=r75g8/r75g8/x150y150g16/i425&Display=hpfr&DefSeekPage=x&SearchBack=ZyActionL&Back=ZyActionS&BackDesc=Results%20page&MaximumPages=1&ZyEntry=1&SeekPage=x&ZyPURL#>

Dr. A.W. Hatheway's Former Manufactured Gas Plant web site. <http://www.hatheway.net/>

Brown's Directories of American Gas Companies Gas Statistics, Florida. 1887 to 1944, 1950 & 1960. (various publishers). Courtesy of Barbara Alfano of EPA Region 4 and Bill Pence, Esq.

Sanborn® Fire Insurance Maps 1867 to as late recent 1970. Major Florida Cities. Courtesy of the State Library of Florida and FSU Strozier Library.

STATUS of FLORIDA MANUFACTURED GAS PLANT SITES
February 2019

EPA Region 4 Superfund Sites website. <https://www.epa.gov/fl/list-superfund-sites-florida>

EPA A Resource for MGP Site Characterization and Remediation: Expedited Site Characterization and Source Remediation at Former Manufactured Gas Plant Sites website
<https://www.epa.gov/remedytech/resource-mgp-site-characterization-and-remediation-expedited-site-characterization-and>

New York Department of Environmental Conservation. No date. New York States Approach to the Remediation of Former Manufactured Gas Plant Sites. Division of Environmental Remediation. https://www.dec.ny.gov/docs/remediation_hudson_pdf/nysmgpprogram.pdf

Interstate Technology & Regulatory Council (ITRC) Web Site - Former Manufactured Gas Plants. <https://www.itrcweb.org/petroleumvi-guidance/Content/Appendix%20E.%20Types%20of%20Petroleum%20Sites.htm#Former2>

Scientific American (Reprint) July 9, 1898. The Manufacture of Pintsch Gas, courtesy of Catskill Archives.
<http://www.catskillarchive.com/rrextra/sdgas.Html>

FDEP Information Portal -Facility and Document Search <http://prodenv.dep.state.fl.us/DepNexus/public/searchPortal>



Jim McCarthy, PG II
FDEP

DoD, Brownfields and CERCLA Programs Section
Division of Waste Management
February 3, 2019

