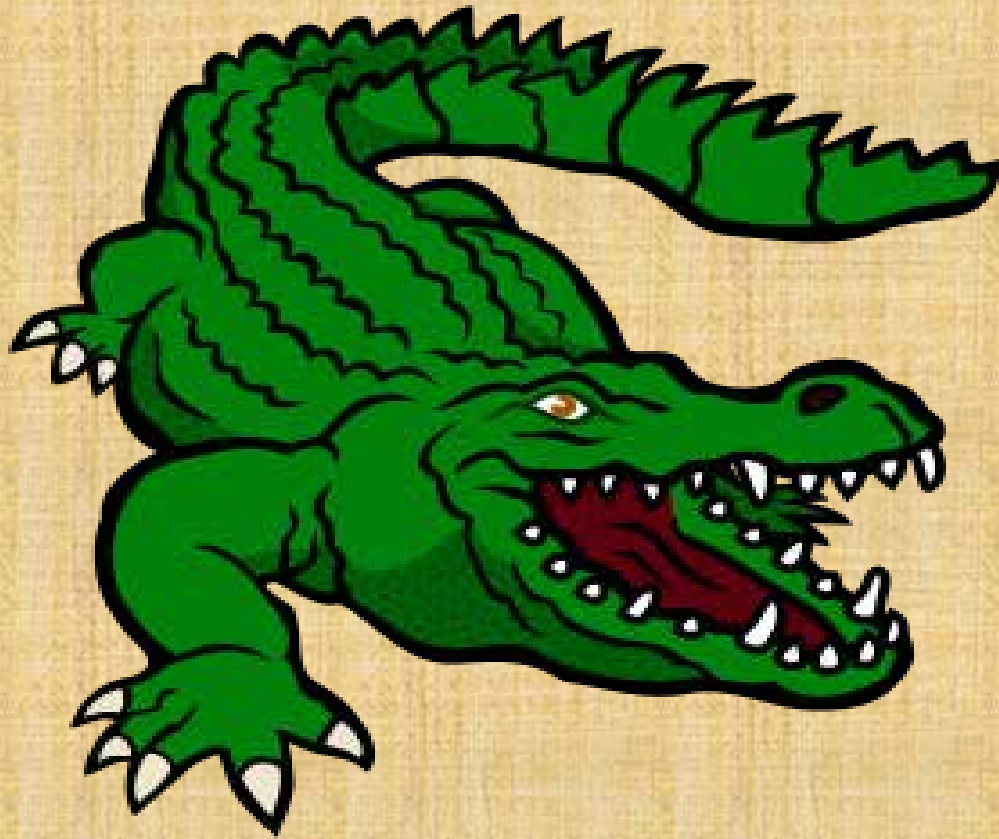


The Town of Malabar
seeks to become a
Florida Trail Town

The following is intended to show
FDEP OGT
that

Malabar is ready!

From afar, visitors may see
Florida as a colorful place of
green alligators & pink flamingos



Some folks may visit Florida just
to meet a black and white mouse



However, for a growing number of Florida visitors and residents, the question is where is it best to ...



HIKE?

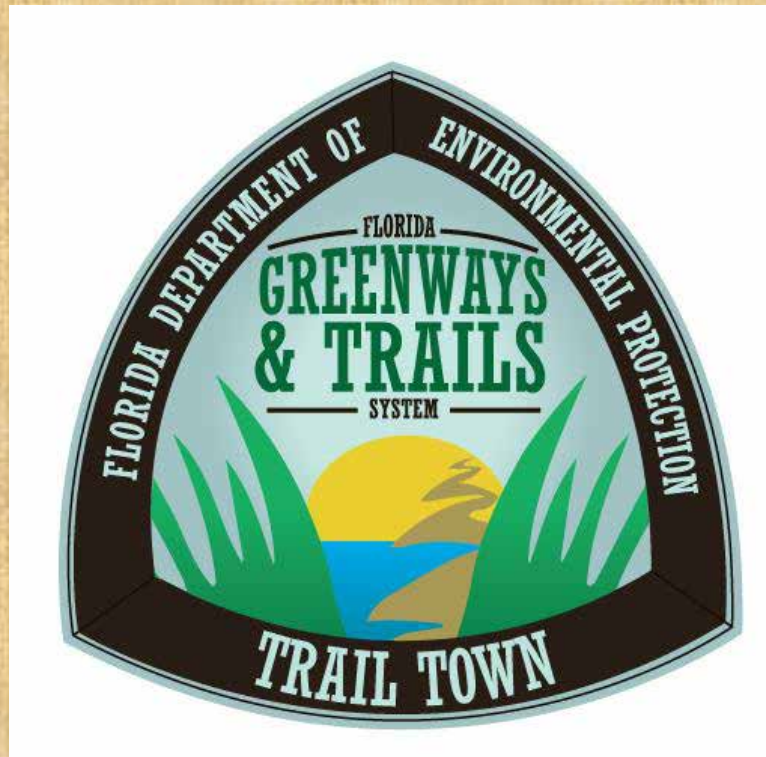


RIDE?

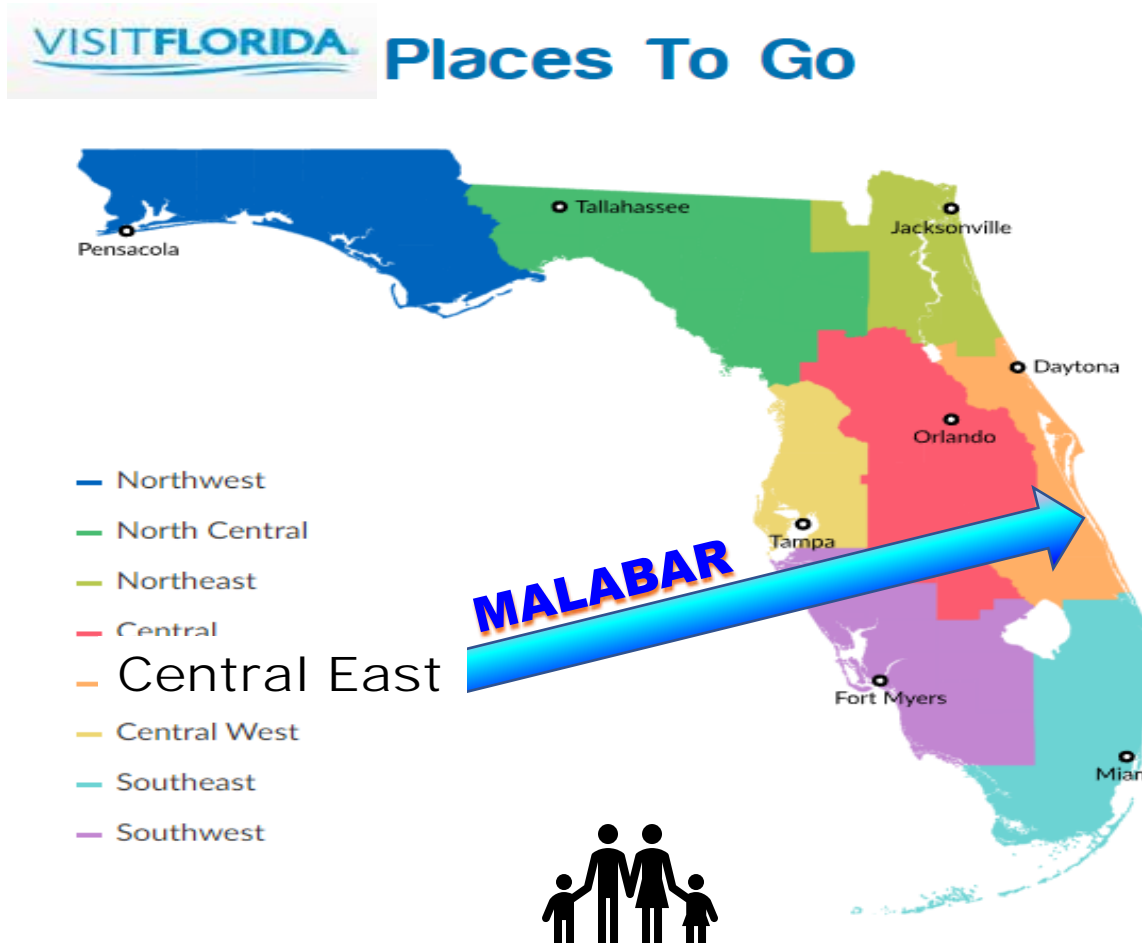


BIKE?

For those who want to experience real Florida, the state offers a diversity of locations with some recognized as a Florida Trail Town



Centrally located on the east coast of Florida
is the
Town of Malabar



Malabar is located on the Indian River Lagoon (IRL), near Melbourne Airport, Port Canaveral, I-95, beaches, hotels, restaurants, hospitals, colleges and shopping



Malabar is a *different* kind of
Brevard County town...

Malabar borders the large population
concentration of southern Brevard County
yet Malabar continues to maintain its rural
environment





In Greenway stats as of 2017,
Malabar is GREEN...

EEL Program land:

1,063 acres

Malabar Parks & Govt. land:

1,072 acres

Sum: 2,135 acres

33% of total land area: 6,447 acres

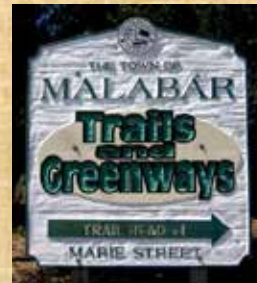
Malabar is committed to its trail system, with a very active Trails and Greenways Committee (T&GC) and strong support from residents and Town Council

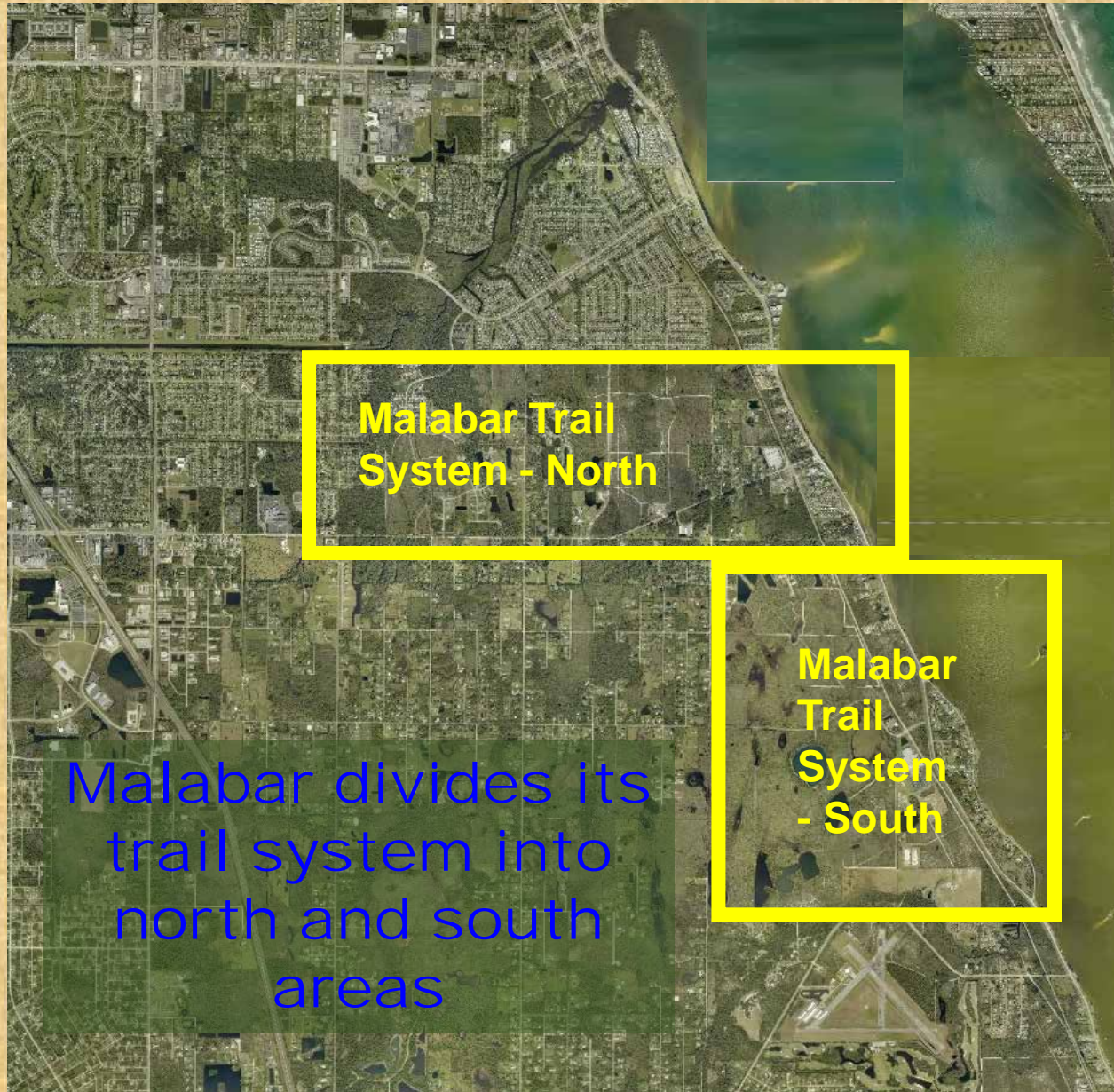


<http://www.malabartrails.org> authorized & funded by TOM and maintained by T&GC, provides businesses and citizens of TOM with information regarding the trails of TOM

Unofficial Mission of the Trails and Greenways Committee (T&GC)

Plan, enhance, and maintain the trails and greenways of the Town of Malabar to assure the sustainability of our environmentally protected lands so that current and future generations are encouraged to get outside to safely enjoy nature. Coordinate these efforts by networking with neighboring communities so that the resulting trail system flows from one to another – serving all.





**Malabar Trail
System - North**

**Malabar
Trail
System
- South**

Malabar divides its
trail system into
north and south
areas

At the main TOM trailhead, the Sand Hill Trailhead #1, at 1400 Marie Street, there are now several AMENITIES which include:

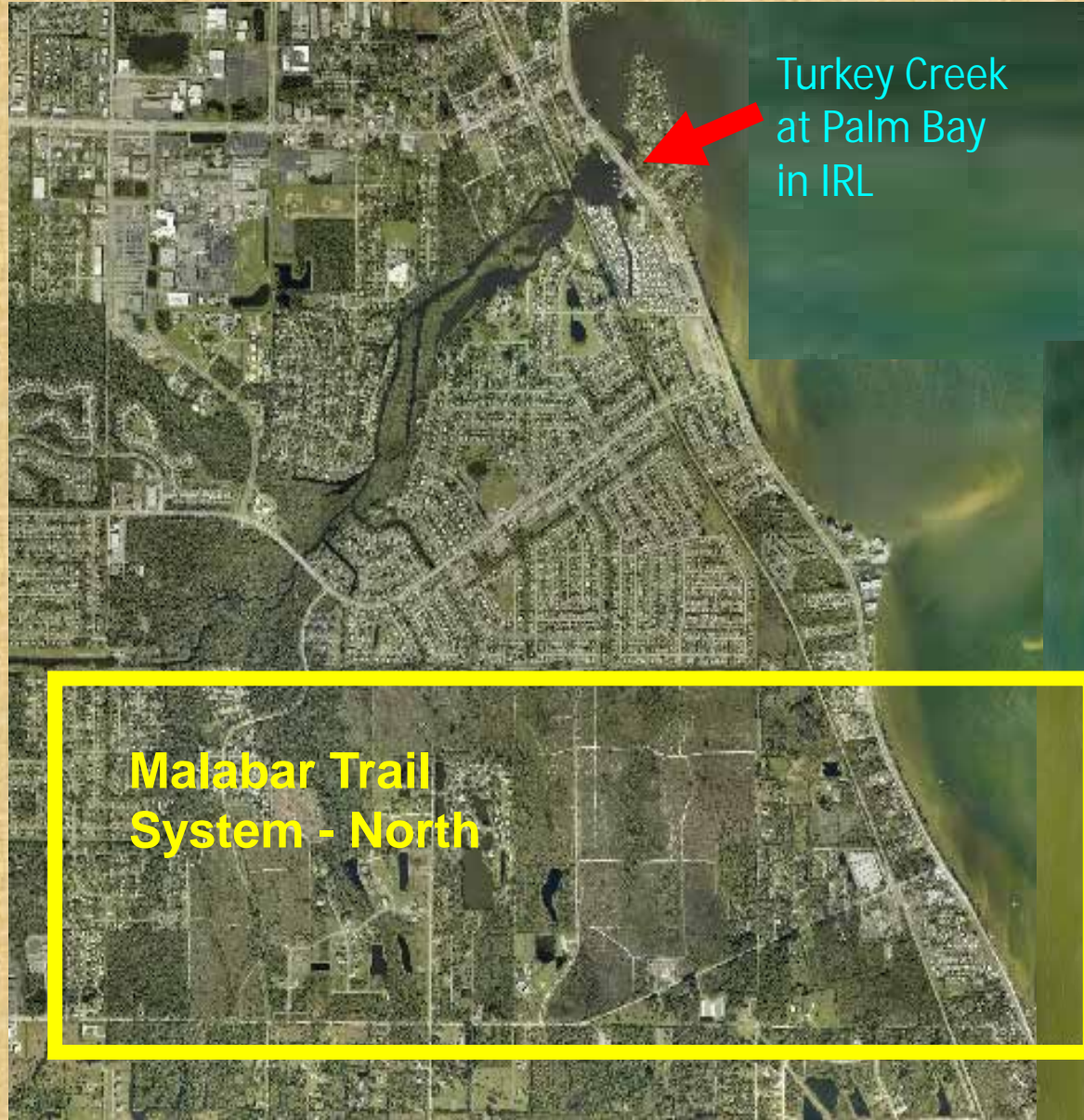
- **Kiosks** with aerial maps of the area trails and QR codes for links to Adobe maps online
- **Trail and trailhead signage** show nearby landmarks, seasonal alternate routes (summer flooding), other parking / trailhead access points, trail difficulty, trail use
- **TOM T&GC's new Cameron Trail Shelter** ("CTS") a roofed elevated deck that overlooks a seasonal wetland and provides trail users with a centralized point of shelter from sun and rain – as well as an observation point for viewing wildlife in the nearby wetland.
- An **"emergency" hotline** (limited to trail navigation assistance) that routes the trail user to a T&GC member's cell phone – to obtain help to trail users needing directional assistance back to their starting point.
- **ADA Restrooms and ADA Parking** – on the trail – for easy trail access by ADA users
- **Covered pavilion for outdoor events** needing shelter from sun or rain
- **Fire ring** – sometimes used by Boy Scouts or Trail Life members in organized events
- **Non-ADA parking** – including space for horse trailers

Additionally, to provide insight to additional trail AMENITIES directly at or near TOM trail entrances, it may be helpful to reference the numerous FL DEP grants awarded for trail projects of TOM and nearby locations that connecting to TOM trails:

- **2015 G-V - Town Connector Trail - Construction of 3,150 Linear Feet (LF) of six-foot wide natural surface trail – RTP Funds awarded: \$53,600**
- **2014 TOM - Sand Hill Trailhead – ADA restroom and ADA parking – RTP Funds awarded: \$90,480**
- **2012 CPB - Cross City Trail - Phase 1 - Construct 6,850 LF of trail - 2,930 LF sidewalk, 3,920 LF asphalt for new trail - – RTP Funds awarded: \$198,363**
- **2004 – CPB - Boundary Canal Trail - Phase II - Multi-Use trails and related support facilities - – RTP Funds awarded: \$72,812**
- **2002 – CPB - Boundary Canal Trail - Hard surface multi-use trail and related support facilities - – RTP Funds awarded: \$100,000**
- **1998 – CPB - Turkey Creek Boardwalk - Construction of Boardwalk Trail - – RTP Funds awarded: \$10,000**



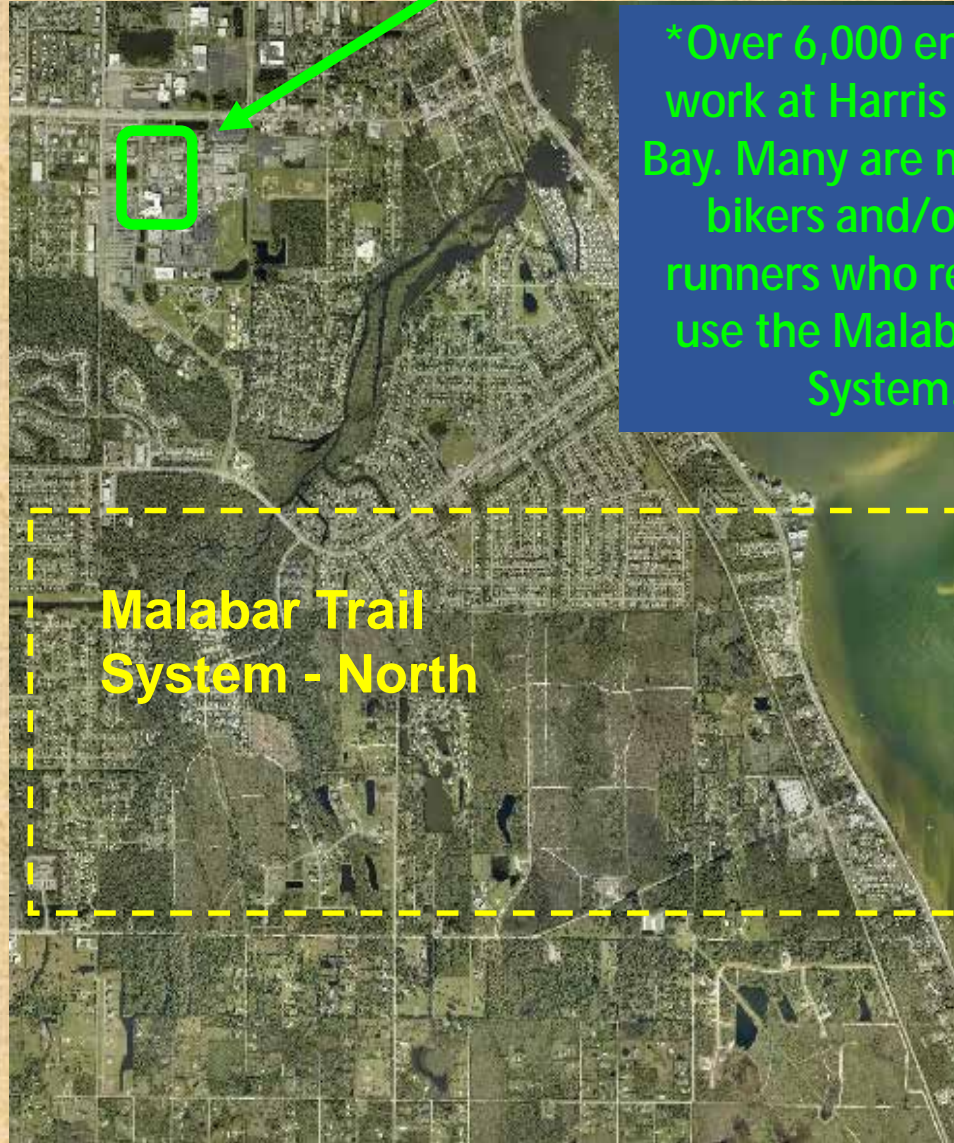
A CLOSER
LOOK AT
Malabar Trail System
NORTH



Turkey Creek
at Palm Bay
in IRL

**Malabar Trail
System - North**

**New \$100M Harris Corp Engineer Center in
Palm Bay (1400 Employee Capacity)
Engineers are frequent trail users**



*Over 6,000 engineers work at Harris in Palm Bay. Many are mountain bikers and/or trail runners who regularly use the Malabar Trail System.

**Malabar Trail
System - North**

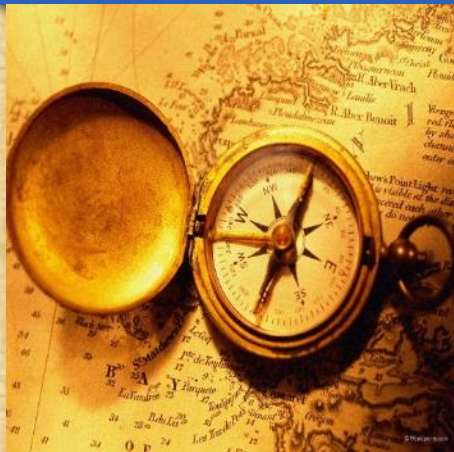
Brevard Greenways and Trails: Showcase Projects

- Showcase Projects represent the best of Brevard County
- The Brevard County Space Coast Transportation Planning Organization (SCTPO), has defined 5 Showcase projects, one of which is the South Brevard "Al Tuttle" trail
- Goal of this presentation is to introduce a proposed trail alignment connecting Malabar southward to Grant-Valkaria

Benefits of Greenways and Trails

- Provide outdoor recreation and opportunities to exercise close to home.
- Help conserve native ecosystems and landscapes by maintaining space that sustains the biodiversity of native plants and animal communities.
- Offer opportunities to support economic growth without sacrificing environmental quality.
- Provide "outdoor classrooms" where students can learn about native plant and animal species, ecosystems, and ecological processes.
- Provide (non-motorized) alternative transportation routes for commuting to work, school, local businesses, recreation sites and community destinations.
- Can help reduce air pollution and roadway congestion.

Four Of the Showcase Trails...



East Central Florida Regional Rail Trail

STATUS: Office of Greenways and Trails is currently conducting parcel appraisals of the corridor for acquisition.

Utilizing a historic abandoned rail line, traversing natural ecosystems, the trail will include natural and paved multi-use trails with amenities for hikers, joggers, bicyclists, roller bladers, equestrians, and the physically challenged. The trail will link the communities of Titusville, Mims, Scottsmoor and southern Volusia County to existing parks and conservation areas. The trail is a key component in a multi-county, inter-regional trail system and the East Coast Greenway.

Brevard Zoo Trail

STATUS: Trail design is currently being conducted from the Brevard Zoo south to Turtlemound Road.

A natural and paved multi-use trail with amenities for hikers, joggers, bicyclists, roller bladers, equestrians, paddlers and the physically challenged. The trail will link the communities of Rockledge, Viera, Suntree, and north Melbourne to existing parks, conservation areas, community destinations and the St. Johns River.

St Johns River Eco-Heritage Trail

STATUS: Coordination with DEP, St. Johns River Water Management District and the St. Johns River Alliance to begin prioritization process.

Stabilized trails and blueways along the St. Johns River with amenities for hikers, joggers, bicyclists, equestrians, naturalists, paddlers and the physically challenged. Trail users will be offered to experience the cultural, historical, recreational and natural beauty of the St. Johns, an American Heritage River.

North Merritt Island Trail

STATUS: Trail planning is being conducted in existing parks and conservation areas.

A natural and paved multi-use trail with amenities for hikers, joggers, bicyclists, roller bladers, equestrians, and the physically challenged. The trail will link the North Merritt Island community to existing parks, conservation areas, and community destinations.

The Fifth of the Showcase Trails

South Brevard Al Tuttle Trail

STATUS: Trail design is currently being conducted from Valkaria Road south to Grant Road.

A natural and paved multi-use trail with amenities for hikers, joggers, bicyclists, roller bladers, equestrians, and the physically challenged. The trail will link the communities of Malabar, Palm Bay, Valkaria, Grant and Micco to existing parks, conservation areas, and community destinations.

Area of interest



The north area of Malabar's trail system includes the Al Tuttle Trail, an ADA compliant paved Trail section originally funded through FL FDEP OGT





The Malabar Trail System emphasizes community connectivity – below is Capon St. Kiosk in Palm Bay at a pedestrian bridge that provides access to Al Tuttle Trail



Another example of community connectivity – below is Port Malabar Blvd. Kiosk in Palm Bay at northernmost trailhead providing access to Al Tuttle Trail

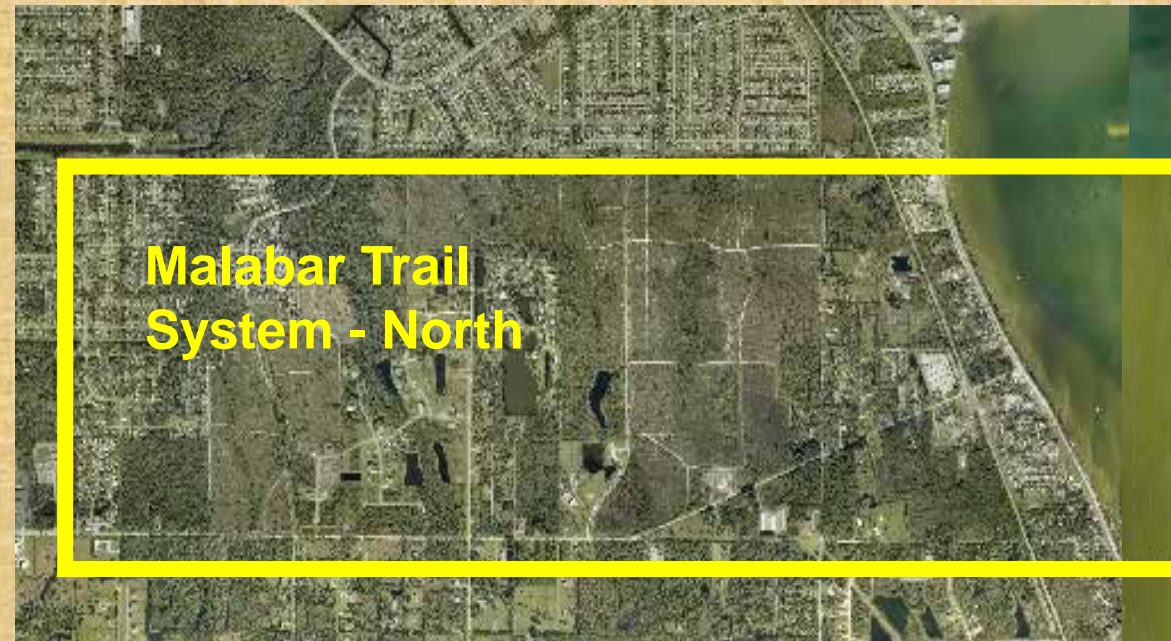


The paved Al Tuttle has no motorized vehicles so it provides a great place for folks to get outdoors and enjoy nature



The Malabar Trail System – North
= Cameron Preserve in the middle
bordered by Malabar Scrub Sanctuary
East and West

Based on EEL Program trail camera traffic projected at 12 months, the Malabar Scrub Sanctuary has trail use rate of 38,000 visits per year!



Numerous unpaved marked trails connect with and are located to the south and west of the Al Tuttle



Malabar N. Corey Road Trailhead



Malabar Trails
Considered
"Ideal" Florida
Singletrack



Malabar's Amazing Natural Trails



**The main loop in
Malabar Trail
System – North
has about 12
miles of trails**

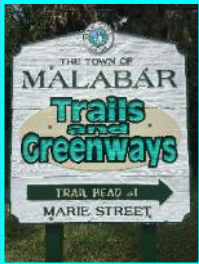
**Jordan Scrub
in Malabar Trail
System - South
contains about
8 additional
miles**



The Malabar Trail System - North includes multiple bridges designed to maintain natural trail width



Malabar Sand Hill Trailhead #1: Al Tuttle Trail



This multi-user trailhead starts the Al Tuttle Trail which is part of the SOUTH BREVARD LINEAR TRAIL SYSTEM



Trail Restroom Grant concept and the *Real McCoy*, on the trail with a drinking fountain

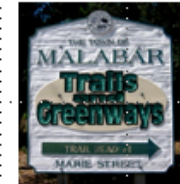


Main goals of Grant are shown in this picture

- Add ADA accessible restroom directly adjacent to Al Tuttle Trail (FDOT # 4154961), to serve that trail system
- Add potable water supply for trail users (small RO type water treatment system, water fountain, public use certified)
- Water lines from existing well
- Septic system for restroom
- Add ADA Parking Spaces, Paved, directly adjacent to trail



Exhibit F: Photo 1
Proposed Restroom
Location Directly on
Completed Trail



CAMERON TRAIL SHELTER

Built by T&G Committee & Volunteers



Cameron Trail Shelter
Provides shade from sun and cover from rain



Located at a main, remote intersection of several trails in Cameron Preserve and designed for possible future ADA trail connection



CAMERON TRAIL SHELTER INSIDE SIGNAGE



Mount in this place and what is it for?

In the winter when hundreds of 2014-2017 Mt. the Cameron Trail Shelter (CTS) was designed and built by the Trails and Greenways Committee (TGC) of the Town of Madison. Members of the TGC and other volunteers worked hard to make this structure a quality and sustainable place to rest when on the trail and explore. It was intended for use by all trail users - to provide shelter from sun or rain and to give hikers a place to relax and observe local wildlife. Most of the project funding came from Madison residents and local business owners, with some additional programmatic contributions. The Cameron Trail Shelter is for the enjoyment of all and is to be located within the 100 acre Richard G. Cameron, Jr. & Barbara Wilburson Preserve where parked, food, authorized vehicles, and supervised camping are permitted.

After building the CTS as a 100% volunteer entity what the TGC asks you to please respect and take care of the structure so that you and others can continue to enjoy the view. If the CTS is broken or damaged the funds and/or volunteers may not be there to fix it or reconstruct. The CTS was intended to be a safe and well-used structure and of course with nature. Naturally, some things will happen while at the CTS and when it has been damaged or destroyed immediately report it to the Madison County Sheriff's Office. We hope that use of the CTS will encourage respect of nature and use support of our local system. For information on trails and future projects contact the TGC, please visit www.TrailsMadison.org. Thank you, Trails and Greenways Committee, Town of Madison.

Another connection of the Malabar Trail System is Turkey Creek



Signage at kayak launch parking at Turkey Creek Sanctuary, Palm Bay – a short distance from a connecting trail of the Malabar Trail System



Kayak launch trailhead at Turkey Creek Sanctuary,
Palm Bay – a short distance down a connecting trail
of the Malabar Trail System

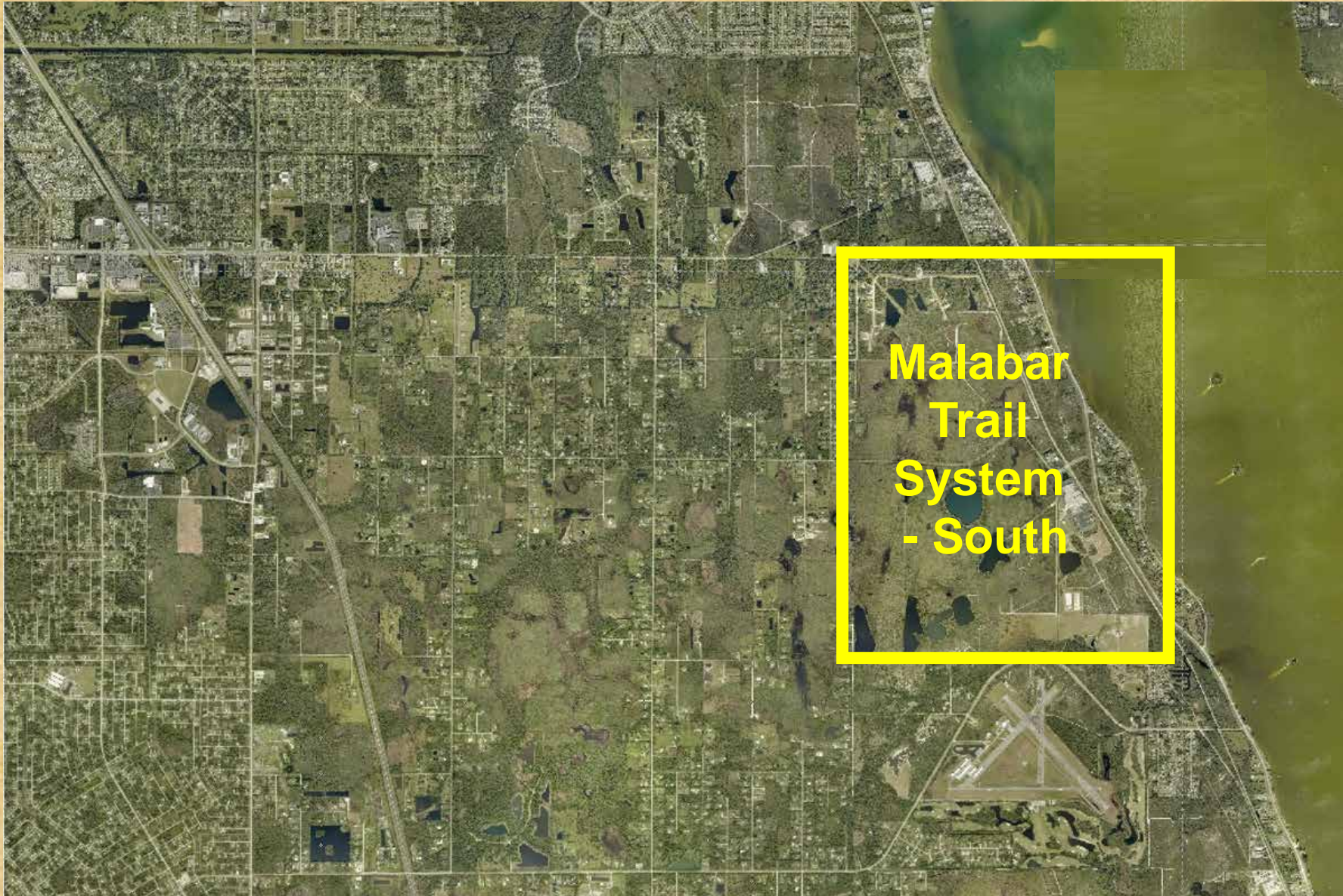


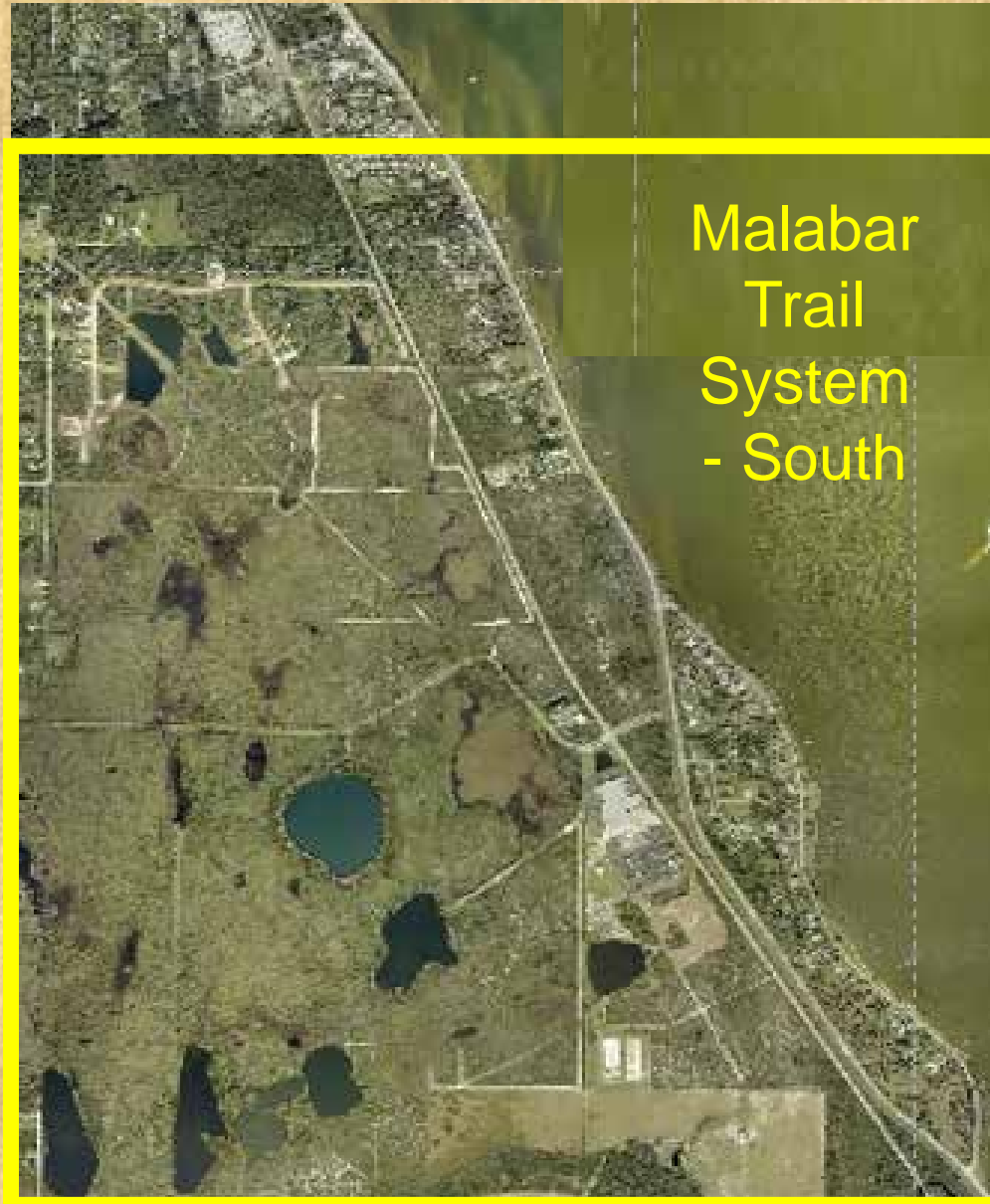
A manatee "happy roll" on Turkey Creek Sanctuary, Palm Bay - a short distance down a connecting trail of the Malabar Trail System



A stone and wood signpost stands on a paved trail in a forest. The signpost has a wooden top section with the text "A CLOSER LOOK AT Malabar Trail System SOUTH" and two stone pillars with circular patterns. The trail is paved and curves to the right, surrounded by tall pine trees and greenery.

A CLOSER
LOOK AT
Malabar Trail System
SOUTH





Malabar
Trail
System
- South





The Malabar Trail System area offers nearby dining including two great restaurants located in Malabar...



phone 321-956-3334
Viewing with phone? Click to call

**A Unique Dining Experience with a Spectacular View
of the Indian River**



WELCOME TO MALABAR MO'S... WHERE THE FUN NEVER ENDS!

MALABAR RD
U.S. HWY 1

321-725-8374

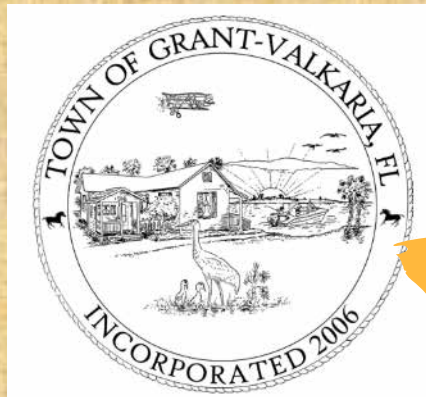
Special thanks to Karen McLaughlin of Karen's Kayaks, for kayaking photos on Turkey Creek shown in this presentation

Special thanks to Michael D Kurrus for several recent drone videos in this presentation

Special thanks to Michael Higley for winter drone video of CTS construction shown in this presentation

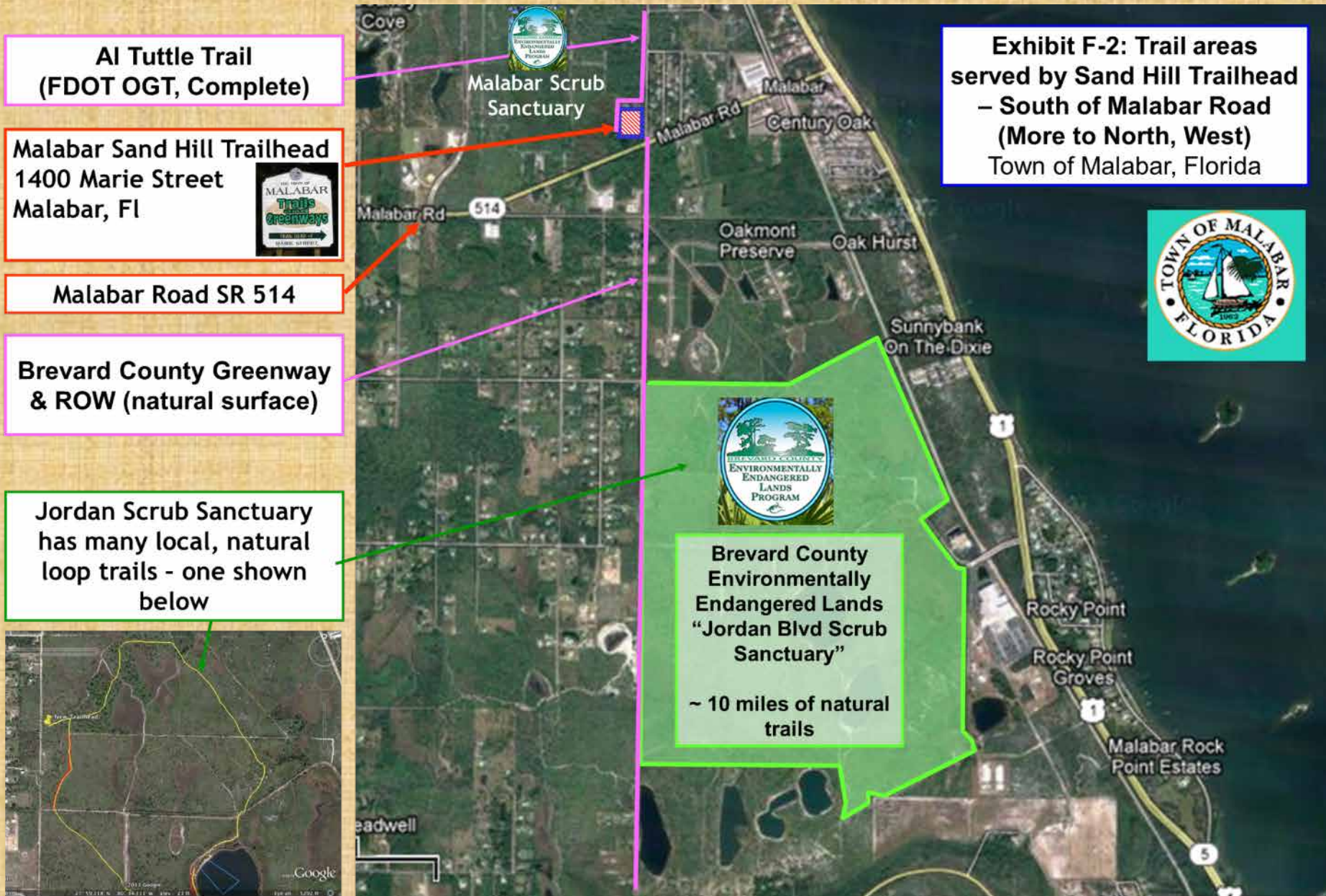


Working
together for
mutual benefit



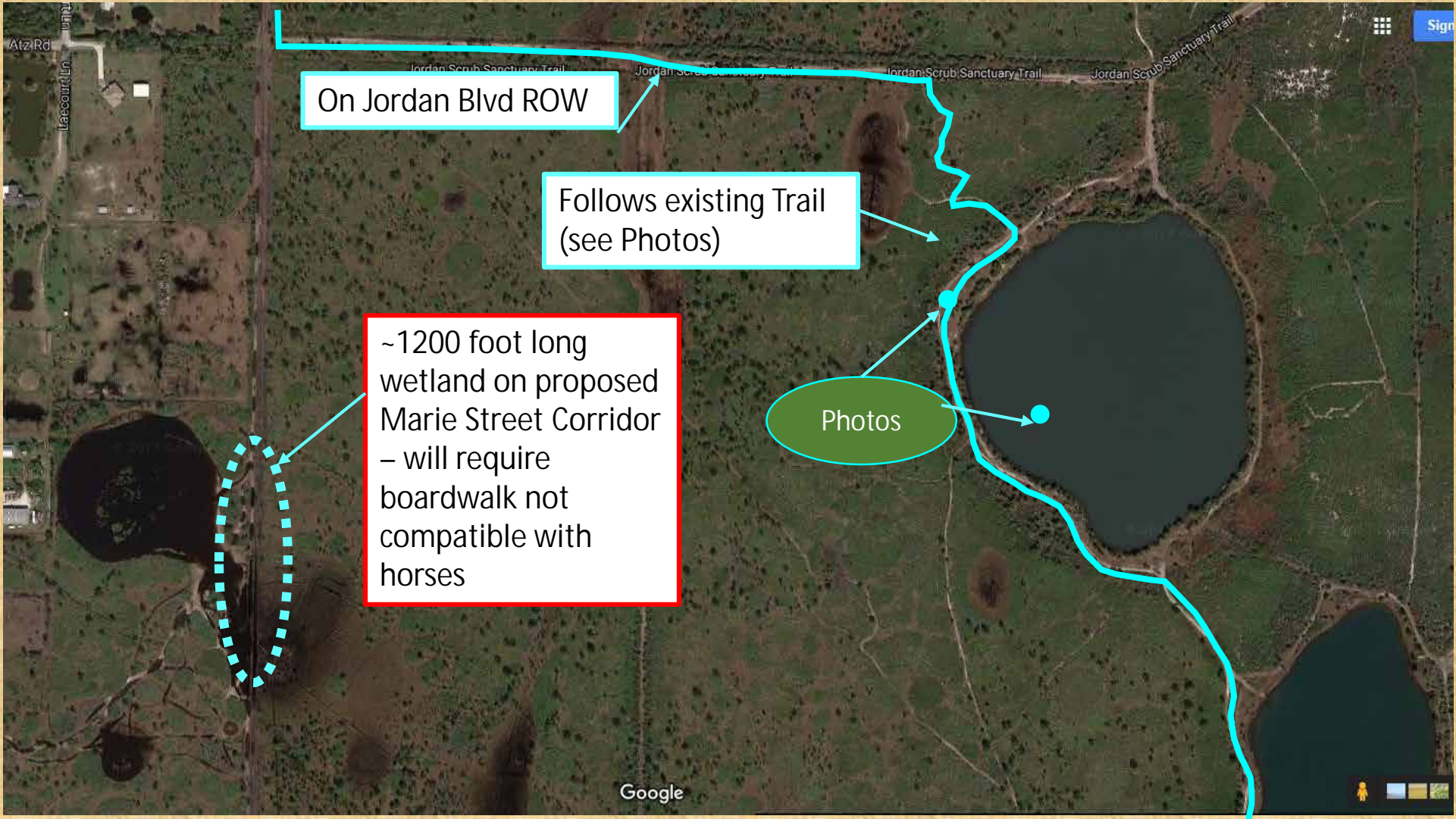
- **Planning session held Jan 12, 2017 in a joint workshop between the Malabar Trails and Greenways Committee, and the Grant-Valkaria Greenways and Trails Board**
- **Summary: After extensive review and discussion of alternatives, the Twin Lakes Alignment is believed to be the best trail connections between the two towns**

Trail Connectivity – Malabar Trail System South of Malabar Rd



Malabar to Grant-Valkaria "Town Connector" Trail - Twin Lakes Alternative

- **Currently the South Brevard Linear Trail Alignment (Defined by the SCTPO) runs down the Marie Street ROW, and encounters ~1000-1200 feet of wetlands in the Jordan Scrub area**
- **The current alignment would necessitate a very long boardwalk section, which is not compatible with equestrian use**
- **An alternative route, through the EEL Pgm Jordan Scrub preserve would offer a much more appealing route, for several reasons:**
 1. **Utilize mostly existing double-trac trails**
 2. **Much less boardwalk required**
 3. **Much better experience for the user.**
- **The EEL Pgm Jordan Scrub Management Plan envisioned that the South Brevard Linear Trail may need to run through Jordan Scrub, and this is included in the current management plan**
- **The Greenways and Trails Committee/Board of both Malabar and G-V believe the alternative shown here is a much better route: It would have far less environmental impact, less boardwalk, and would provide a better user experience.**

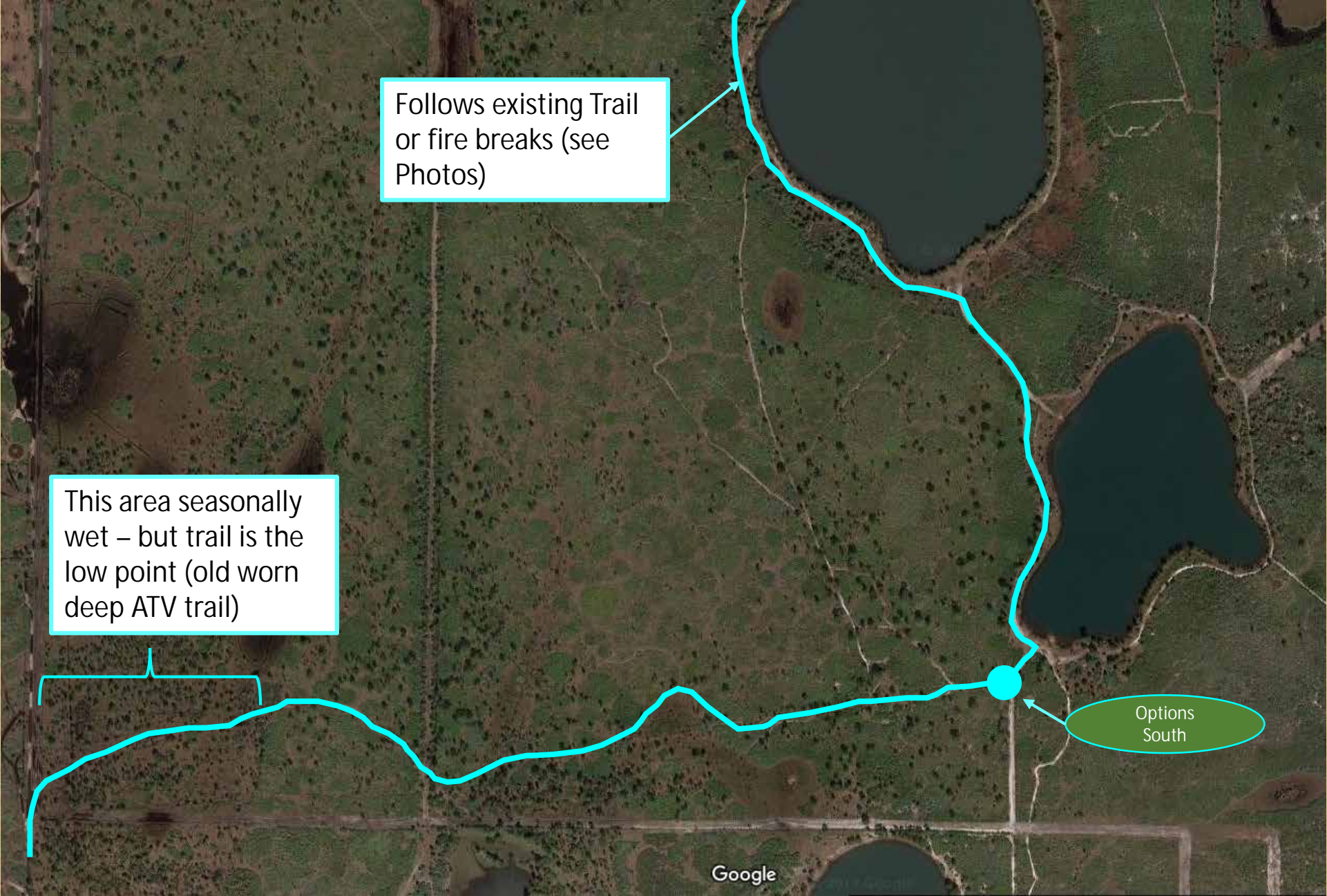


On Jordan Blvd ROW

Follows existing Trail
(see Photos)

~1200 foot long
wetland on proposed
Marie Street Corridor
– will require
boardwalk not
compatible with
horses

Photos



Follows existing Trail or fire breaks (see Photos)

This area seasonally wet – but trail is the low point (old worn deep ATV trail)

Options South

Google

Malabar Trail System Summarization & Future Plans



The Future for the Malabar Trail System
is all about more CONNECTIONS!

**Connection South: Complete the Al Tuttle
Trail to Grant-Valkaria**

**Connection West: Connect the off-road
trail system to the Grapefruit Trail**

Then, Now, the Future

- ✓ The Genesis: It all started with a vision to make Malabar the most trail friendly town in Florida
 - ~33% of Malabar's area is set aside in preserved or govt. property
- ✓ 20 Years of Volunteer Efforts Later we have:
 - Trail – Paved: ~5 miles
 - Trail – Unpaved: ~25 miles
 - Trailheads: 2 major, multiple minor 3rd major in design
 - Active Trails and Greenways group that has formed excellent relations with:
 - Land Managers (EEL Pgm, City of Palm Bay)
 - Brevard County (BPTAC)
 - Brevard Mountain Biking Association (BMBA)
- ✓ Connectivity plans to adjacent communities
 - Near Term Plans to the South (Grant-Valkaria) and West (Palm Bay)

The Malabar Trail System Vision

- Make the South Brevard trails even better
- The Grapefruit Trail (GFT) is actually very near the Turkey Creek Trail System (TCT: in Palm Bay and Malabar). It can be connected to that system using the South bank of the C1 (existing grassy road), and an old existing trail. An overall map is provided to show the geographic relationship
 - Help us connect the two trail systems, for a “total South Brevard” mountain bike & hiking trail system
 - This change would transform the trail system, and greatly improve off-road bicycling and hiking in South Brevard
 - It is also safer, as there is no road in between riding areas
 - Trail crosses through deep woods with stunning views of Turkey Creek, fostering an appreciation of the wild areas around us

Audubon Property Adjacent to Turkey Creek Area



Already Underway to the North and Slightly
West of the Malabar Trail System – North...

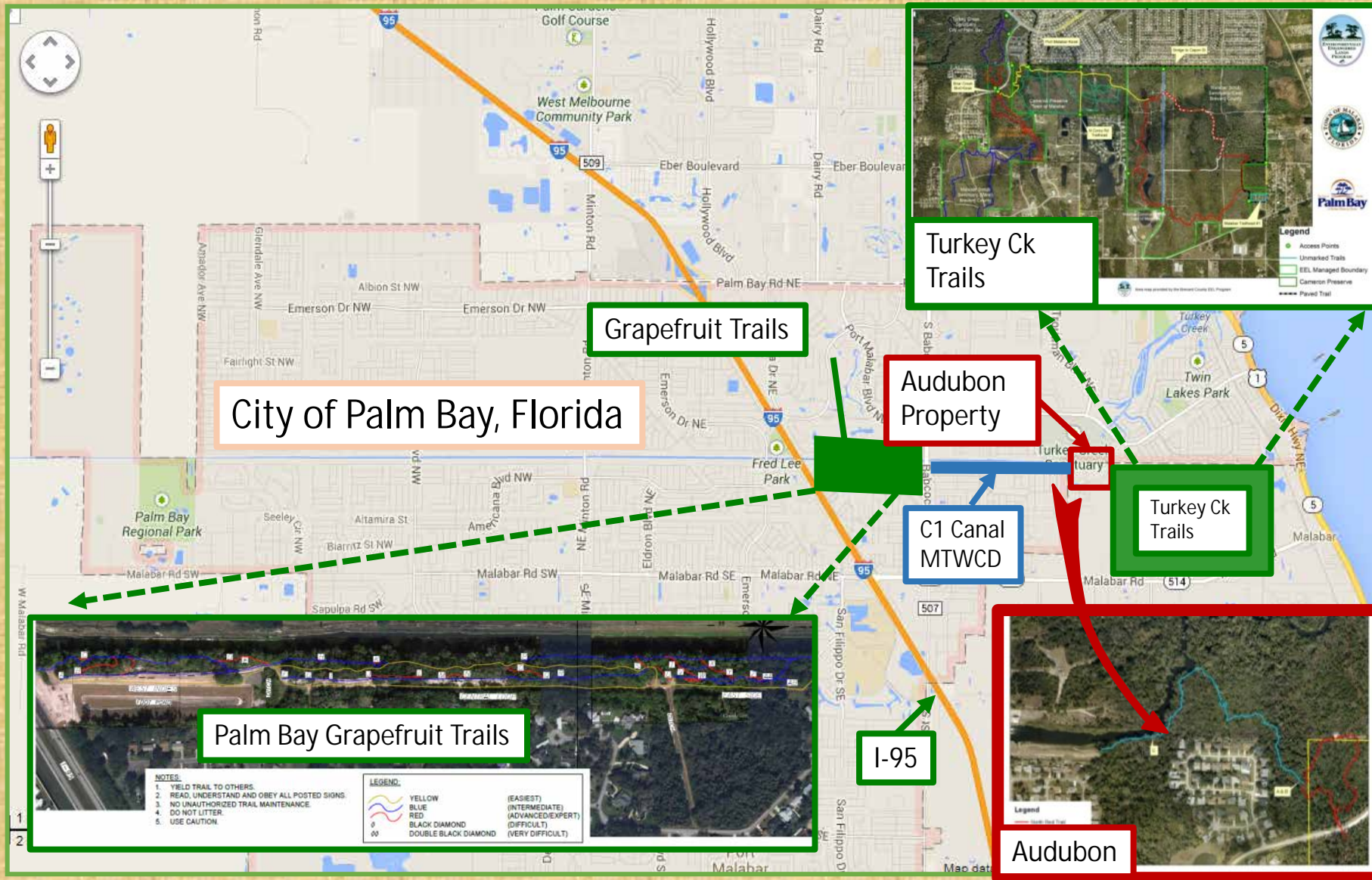
Connection West, to City of Palm Bay

Grapefruit Trail to Turkey Creek Trail Connector

Clear Connectivity Concept:

***Connect the Superb Cross-Country Malabar Trail System
to the Finest Freeride Trail System***

Connect the Turkey Creek Trails to the Grapefruit Trails Via the Audubon Property and the S Bank C1 Canal Public ROW



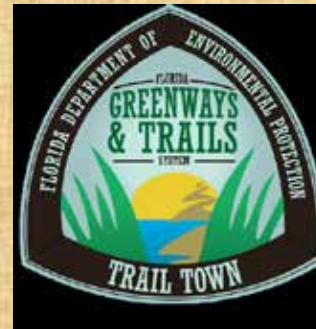
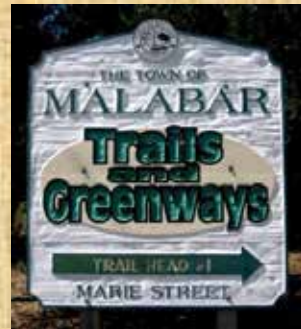
Destination: Grapefruit Trails



The Finest Freeride Trail System in Florida

This concludes the Presentation.

Any Questions?



Thank You