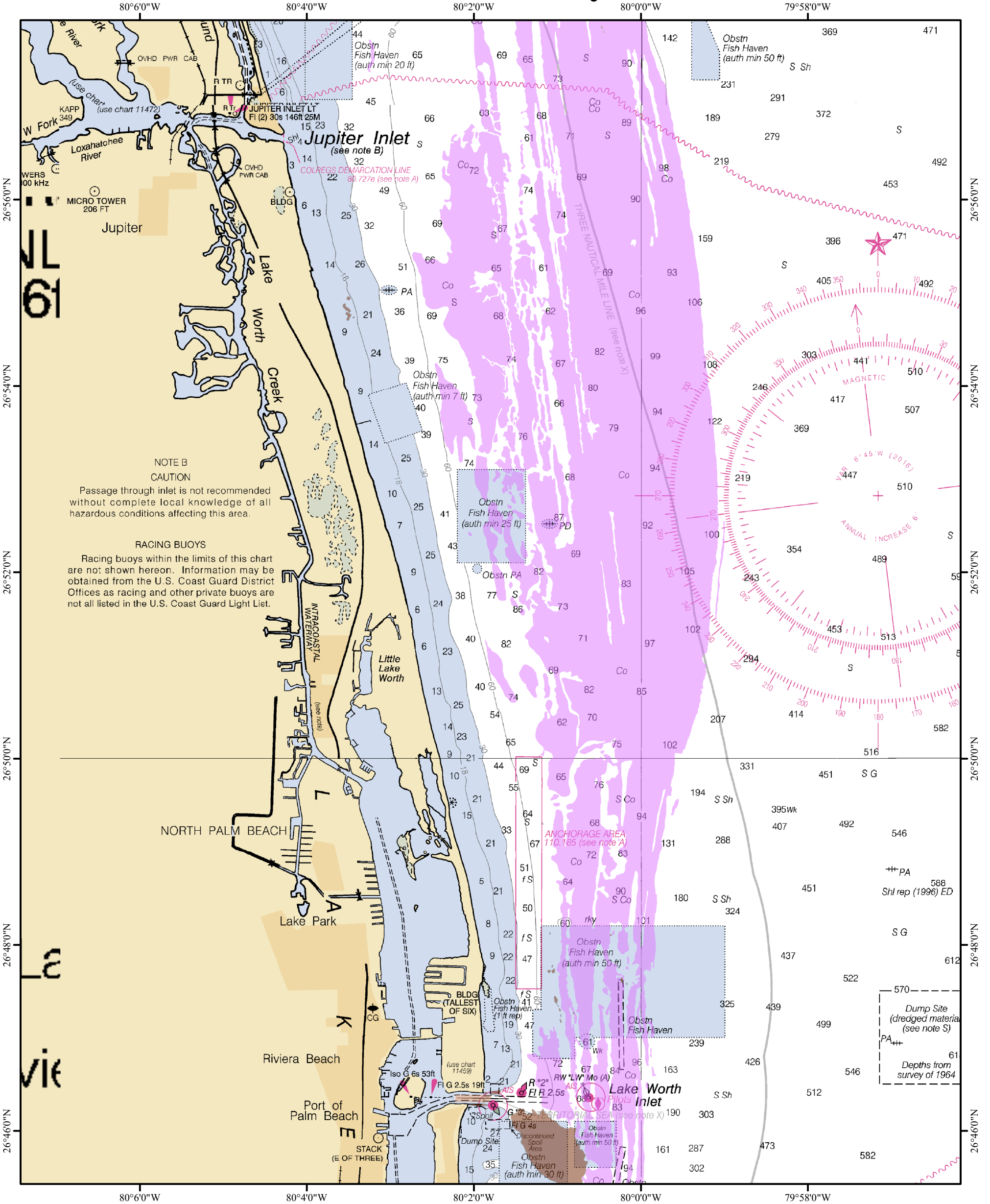


Palm Beach County North

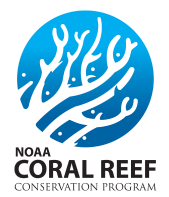
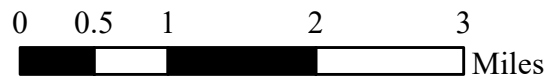


NOTE B
CAUTION
Passage through inlet is not recommended without complete local knowledge of all hazardous conditions affecting this area.

RACING BUOYS
Racing buoys within the limits of this chart are not shown hereon. Information may be obtained from the U.S. Coast Guard District Offices as racing and other private buoys are not all listed in the U.S. Coast Guard Light List.

Legend

- Natural Reef and Hard Bottom
- Artificial Habitat
- Dredged or Excavated



WARNING: Your use of this map is at our own risk. This map is not intended to be used for navigational purposes and is not intended to be relied upon in situations where precise location information is needed or where erroneous, inaccurate, or incomplete location data may lead to death, personal injury, property or environmental damage. Neither the Florida Department of Environmental Protection (FDEP), Board of Trustees (BOT) of the Internal Improvement Trust Fund of the State of Florida nor any content providers, guarantees the accuracy, completeness, or reliability of displayed data. In no event will the FDEP or BOT of the Internal Improvement Trust Fund of the State of Florida be liable for any damages whatsoever (including, but not limited to, incidental, exemplary, and consequential damages, lost profits, or damages resulting from lost data or business interruption) resulting from the use or inability to use this information, whether based on warranty, contract, tort, or any other legal theory, and whether or not the FDEP or BOT of the Internal Improvement Trust Fund of the State of Florida are advised of the possibility of such damages.