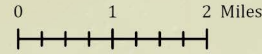


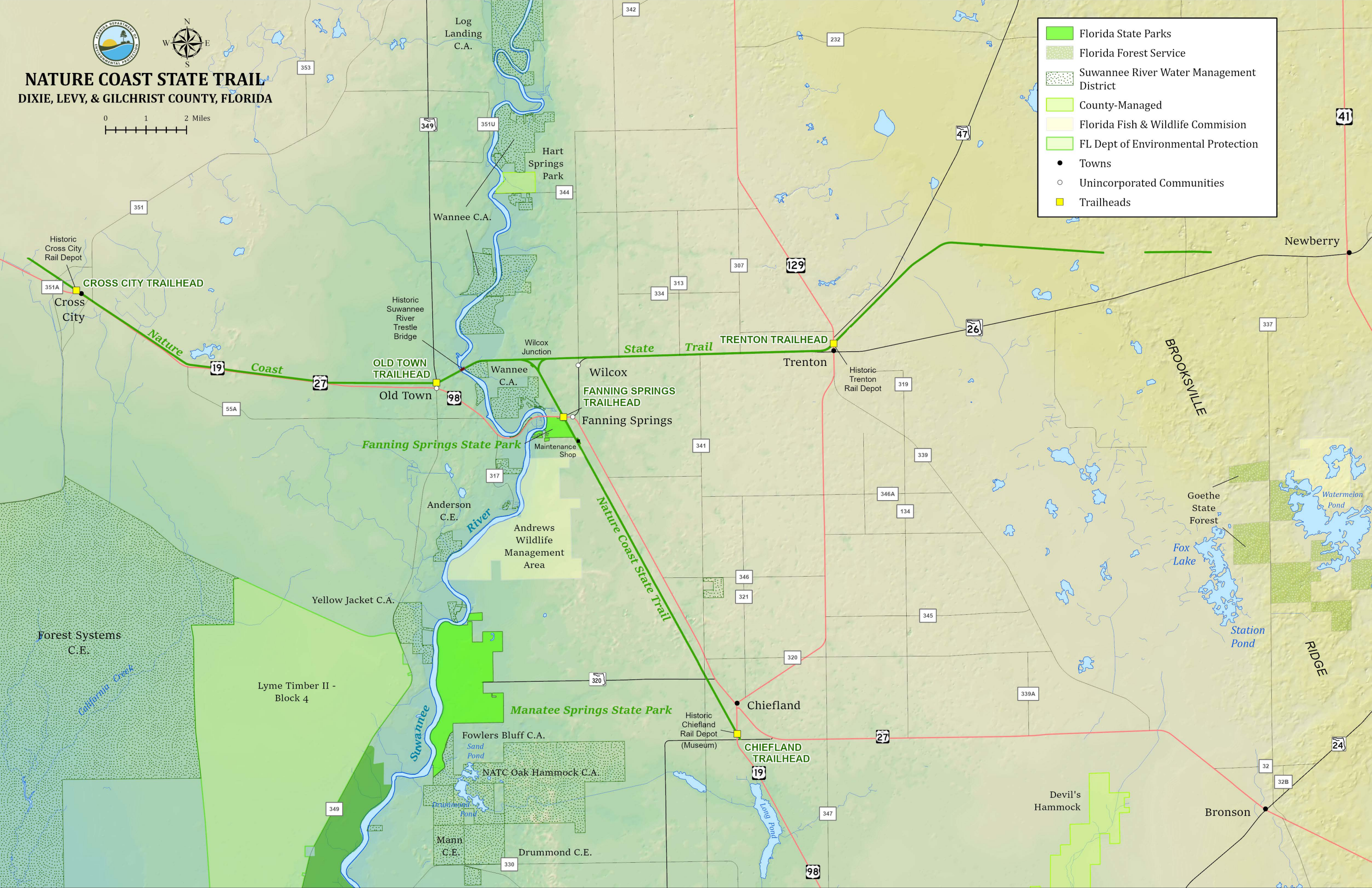




# NATURE COAST STATE TRAIL

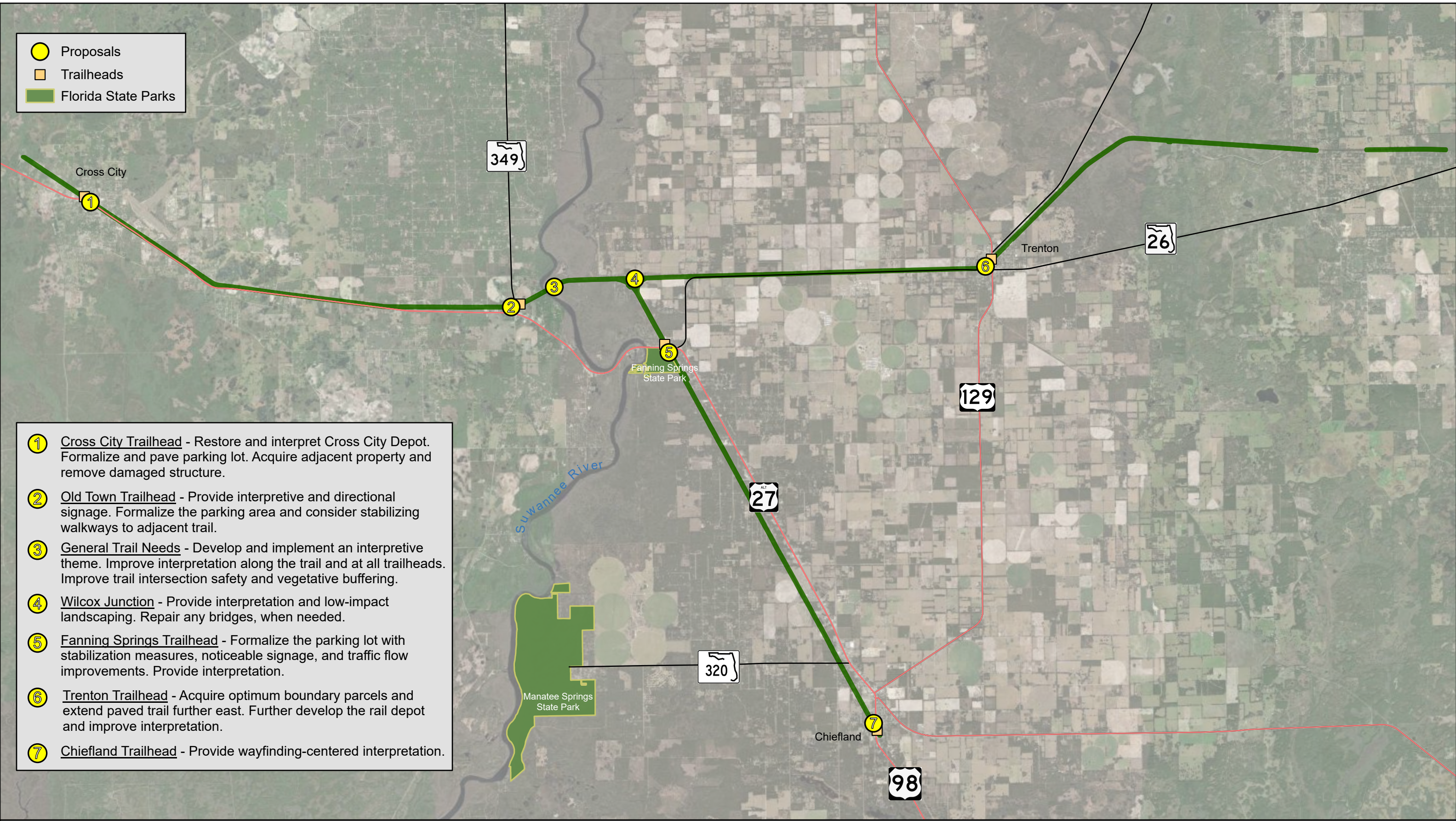
DIXIE, LEVY, & GILCHRIST COUNTY, FLORIDA



	Florida State Parks
	Florida Forest Service
	Suwannee River Water Management District
	County-Managed
	Florida Fish & Wildlife Commission
	FL Dept of Environmental Protection
	Towns
	Unincorporated Communities
	Trailheads



-  Proposals
-  Trailheads
-  Florida State Parks



- 1** Cross City Trailhead - Restore and interpret Cross City Depot. Formalize and pave parking lot. Acquire adjacent property and remove damaged structure.
- 2** Old Town Trailhead - Provide interpretive and directional signage. Formalize the parking area and consider stabilizing walkways to adjacent trail.
- 3** General Trail Needs - Develop and implement an interpretive theme. Improve interpretation along the trail and at all trailheads. Improve trail intersection safety and vegetative buffering.
- 4** Wilcox Junction - Provide interpretation and low-impact landscaping. Repair any bridges, when needed.
- 5** Fanning Springs Trailhead - Formalize the parking lot with stabilization measures, noticeable signage, and traffic flow improvements. Provide interpretation.
- 6** Trenton Trailhead - Acquire optimum boundary parcels and extend paved trail further east. Further develop the rail depot and improve interpretation.
- 7** Chiefland Trailhead - Provide wayfinding-centered interpretation.



# Nature Coast State Trail

## Conceptual Land Use Plan





— Optimum Boundary (Proposed Additions)  
  Florida Forever BOT Projects

Existing Trail Boundary  
 Other Existing State Trails  
 Other Existing Conservation Lands



# Nature Coast State Trail

Optimum Boundary

