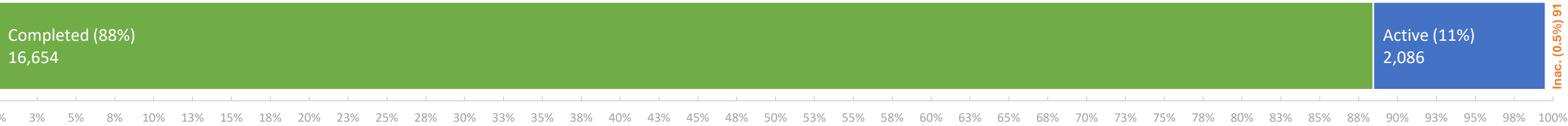


# Non-Program Discharge Statuses

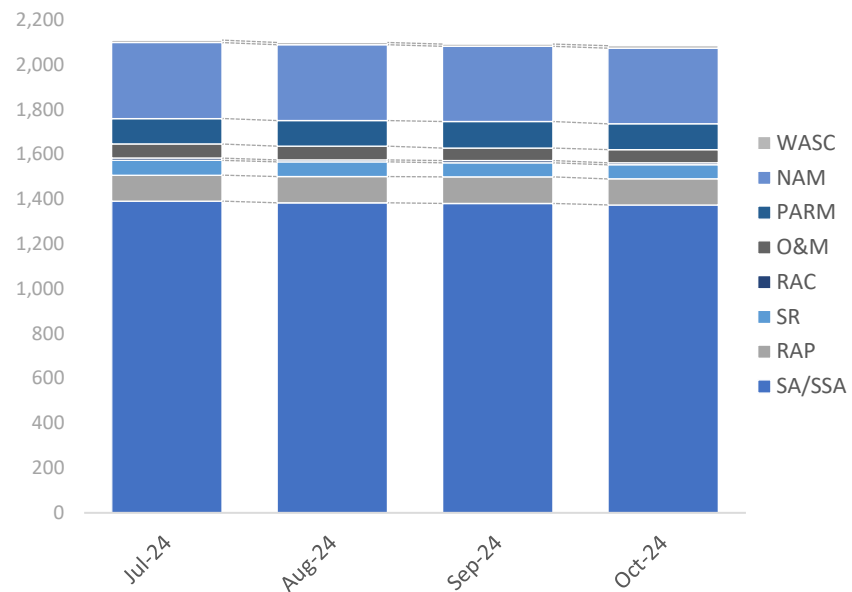
as of October 31, 2024



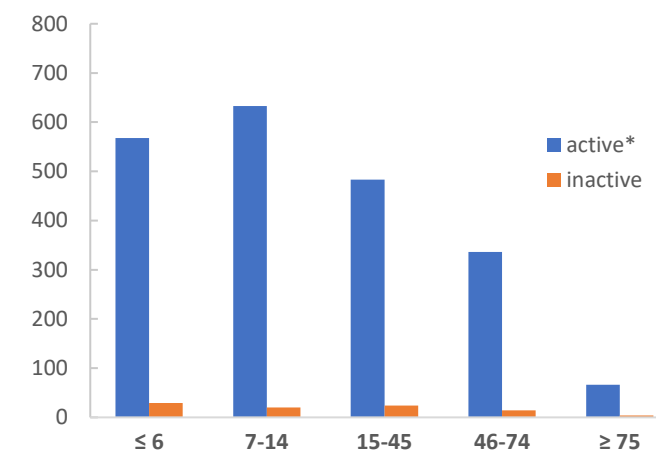
## FY24-25 Non-Program Closures by Lead Agency

Closure Type	District	LP	RP TLH	All Closures	% of Closures
LNFA	0	0	0	0	0%
NFA/SRCO	8	15	2	25	57%
NFAC	1	2	0	3	7%
NREQ	2	6	8	16	36%
<b>Totals</b>	<b>11</b>	<b>23</b>	<b>10</b>	<b>44</b>	<b>100%</b>

## Snapshot of Active Non-Program Discharge Sub-Phases

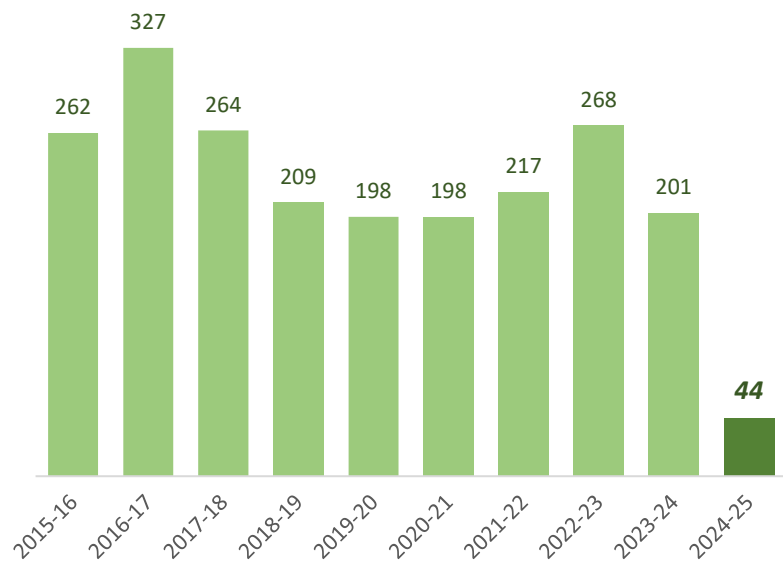


## Non-Program Discharges by Score



\* Discharges with current site managers are considered active.

## Non-Program Closures by Fiscal Year

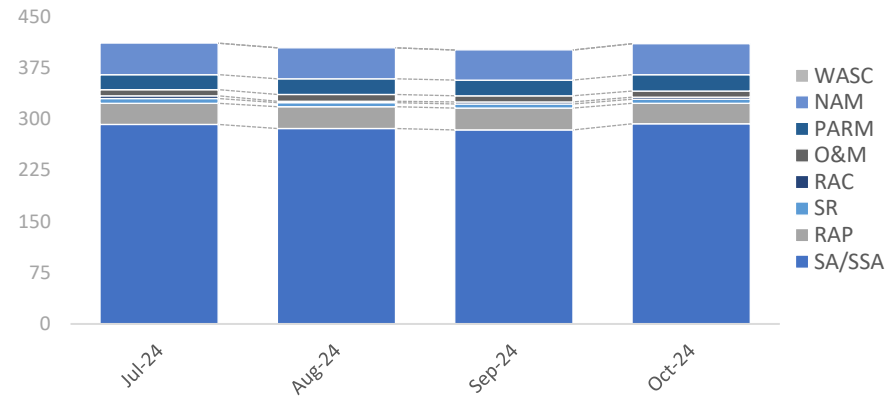


Sub-Phase	Jul-24	Aug-24	Sep-24	Oct-24	Nov-24	Dec-24	Jan-25	Feb-25	Mar-25	Apr-25	May-25	Jun-25
Site Assessment/Supplemental (SA/SSA)	1,392	1,384	1,381	1,375								
Remedial Action Plan (RAP)	116	118	119	116								
Source Removal (SR)	66	65	63	63								
Remedial Action Construction (RAC)	10	9	10	9								
Operation & Maintenance (O&M)	63	62	56	59								
Post Active Remedial Monitoring (PARM)	114	114	118	115								
Natural Attenuation Monitoring (NAM)	339	338	336	338								
Well Abandonment/SRCO (WASC)	11	10	10	11								

# Non-Program Active Discharge Sub-Phases

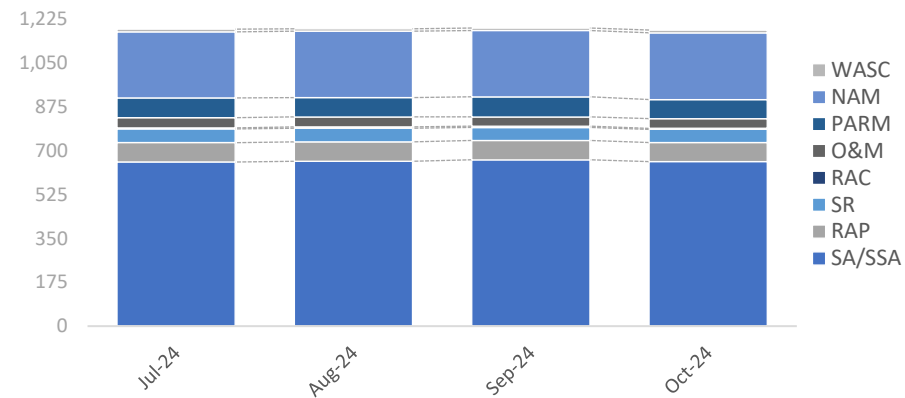
as of October 31, 2024

## District Non-Program Active Discharge Sub-Phases



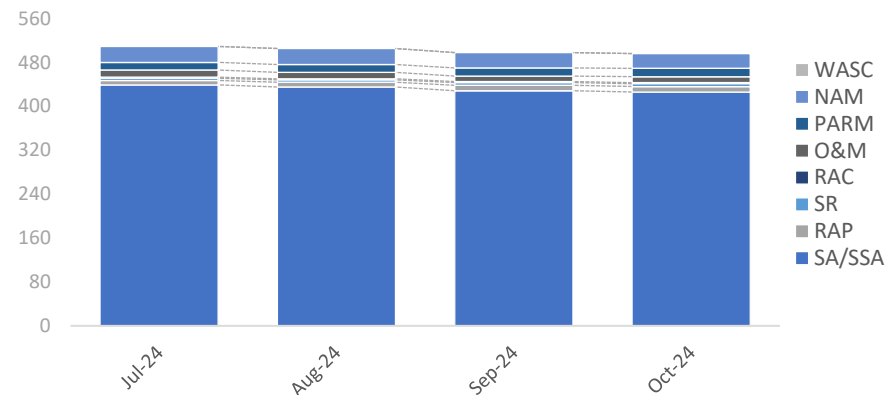
Sub-Phase	Jul-24	Aug-24	Sep-24	Oct-24	Nov-24	Dec-24	Jan-25	Feb-25	Mar-25	Apr-24	May-25	Jun-25
Site Assessment/Supplemental (SA/SSA)	292	286	284	293								
Remedial Action Plan (RAP)	31	32	32	30								
Source Removal (SR)	7	6	6	6								
Remedial Action Construction (RAC)	4	2	3	3								
Operation & Maintenance (O&M)	9	10	9	9								
Post Active Remedial Monitoring (PARM)	22	23	23	24								
Natural Attenuation Monitoring (NAM)	46	45	44	45								
Well Abandonment/SRCO (WASC)	0	0	0	0								
<b>Total</b>	<b>411</b>	<b>404</b>	<b>401</b>	<b>410</b>								

## LP Non-Program Active Discharge Sub-Phases



Sub-Phase	Jul-24	Aug-24	Sep-24	Oct-24	Nov-24	Dec-24	Jan-25	Feb-25	Mar-25	Apr-24	May-25	Jun-25
Site Assessment/Supplemental (SA/SSA)	654	657	663	656								
Remedial Action Plan (RAP)	77	77	77	76								
Source Removal (SR)	55	55	52	52								
Remedial Action Construction (RAC)	4	5	5	4								
Operation & Maintenance (O&M)	41	40	37	39								
Post Active Remedial Monitoring (PARM)	78	77	80	76								
Natural Attenuation Monitoring (NAM)	264	264	264	266								
Well Abandonment/SRCO (WASC)	11	10	10	11								
<b>Total</b>	<b>1,184</b>	<b>1,185</b>	<b>1,188</b>	<b>1,180</b>								

## RP/TLH Non-Program Active Discharge Sub-Phases



Sub-Phase	Jul-24	Aug-24	Sep-24	Oct-24	Nov-24	Dec-24	Jan-25	Feb-25	Mar-25	Apr-24	May-25	Jun-25
Site Assessment/Supplemental (SA/SSA)	439	435	428	426								
Remedial Action Plan (RAP)	8	9	10	10								
Source Removal (SR)	4	4	5	5								
Remedial Action Construction (RAC)	2	2	2	2								
Operation & Maintenance (O&M)	13	12	10	11								
Post Active Remedial Monitoring (PARM)	14	14	15	15								
Natural Attenuation Monitoring (NAM)	29	29	28	27								
Well Abandonment/SRCO (WASC)	0	0	0	0								
<b>Total</b>	<b>509</b>	<b>505</b>	<b>498</b>	<b>496</b>								