



# Office of Emergency Response

**Preparedness / Response / Recovery**



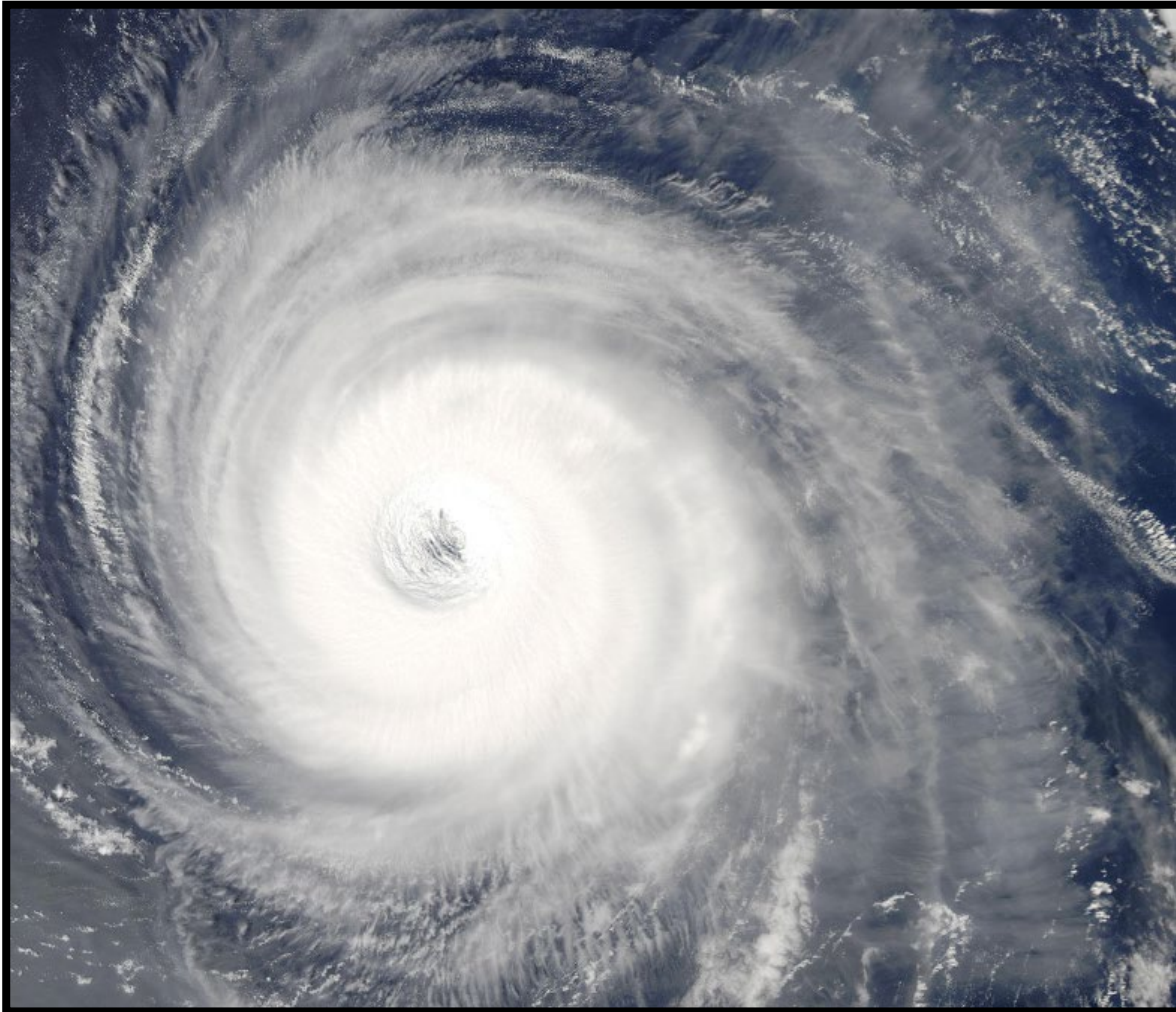
# Office of Emergency Response



**The Office of Emergency Response provides statewide response to coastal and inland oil spills or hazardous material incidents that present an imminent threat to public health, welfare, safety and the environment.**



# Office of Emergency Response



- **State Emergency Response Team (SERT)**
- **Emergency Support Function (ESF-10)**
- **Comprehensive Emergency Management Plan (CEMP)**
- **Emergency Coordinating Officer (ECO)**

# Preparedness





# Preparedness Challenges



- [www.FloridaDisaster.org](http://www.FloridaDisaster.org)
  - Get A Plan
    - Family
    - Business
    - Special Needs
  - Search Box: “LEPC”



# Preparedness Challenges

H  
A  
Z  
A  
R  
D  
O  
U  
S  
W  
A  
S  
T  
E



<https://floridadep.gov/waste/permitting-compliance-assistance/documents/management-storm-generated-hazardous-waste>



# Preparedness Challenges

**B  
O  
A  
T  
S**



<https://public.myfwc.com/LE/ArrestNet/DerelictVessel/VesselMap.aspx>



# Response







# Response Challenges

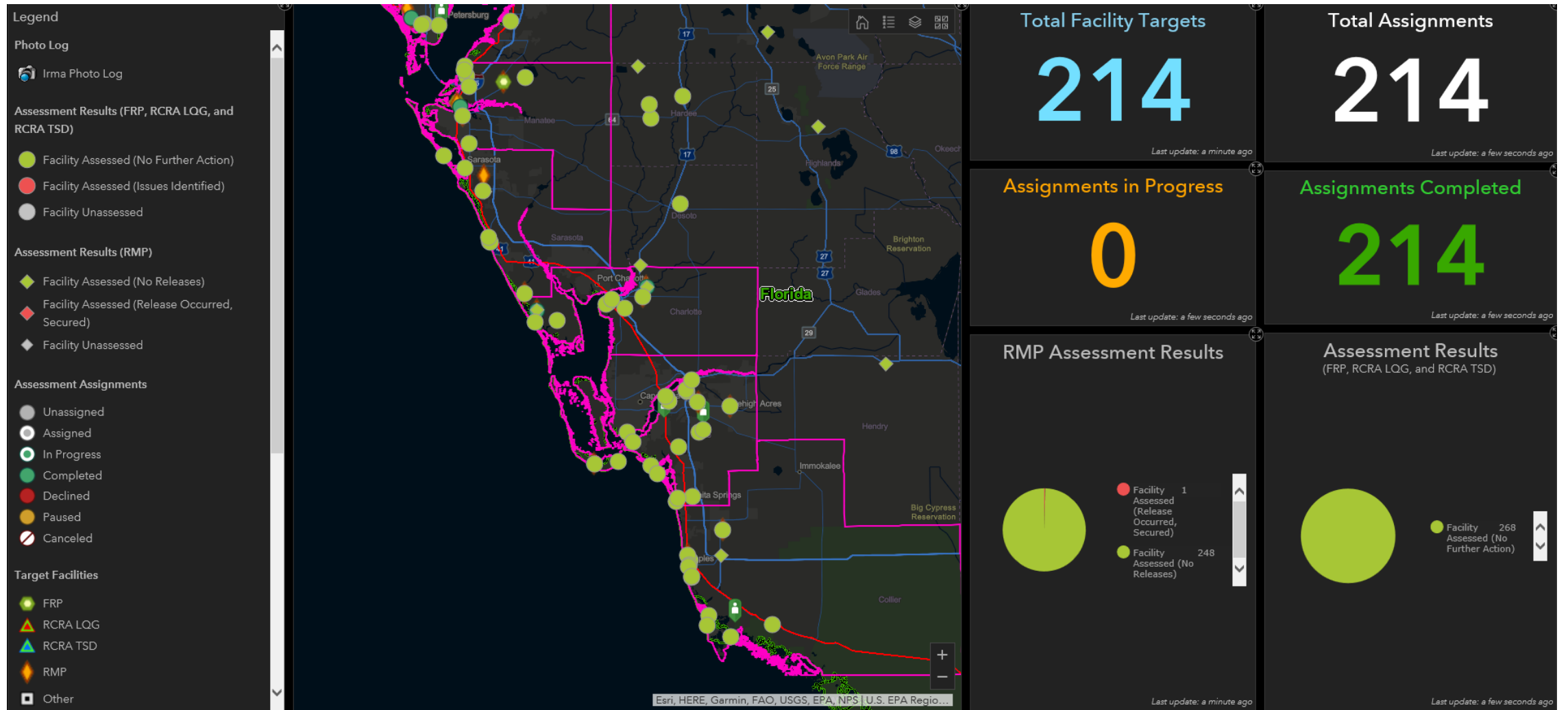
H  
A  
Z  
A  
R  
D  
O  
U  
S  
W  
A  
S  
T  
E



<https://floridadep.gov/waste/permitting-compliance-assistance/documents/management-storm-generated-hazardous-waste>



# Response Challenges





# Response Challenges

B  
O  
A  
T  
S



<https://public.myfwc.com/LE/ArrestNet/DerelictVessel/VesselMap.aspx>



# When to Reach Us?

**ALL calls should be routed thru the SWO/NRC:**

- ✓ Hazardous Material Reportable Quantities
- ✓ Any amount causing a sheen in navigable waterway
- ✓ Petroleum: 25 gallons on pervious surface
- ✓ Abandoned containers
- ✓ Require state on-scene assistance and/or guidance

**Section 403.077: Public Notification of Pollution**

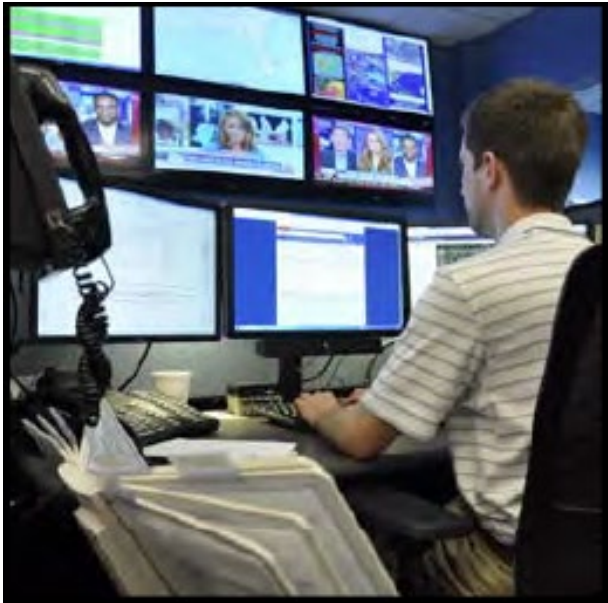
- <https://floridadep.gov/pollutionnotice>





# How to Reach Us?

**State Watch Office (SWO)**  
**(800) 320-0519**



- **24 hours a day, 7 days a week, 365 days a year**
- **Petroleum  $\geq$  25 gallons on pervious surfaces**
- **Must report incidents within 24 hours**
- **When in doubt...Report it!**



# How to Reach Us?



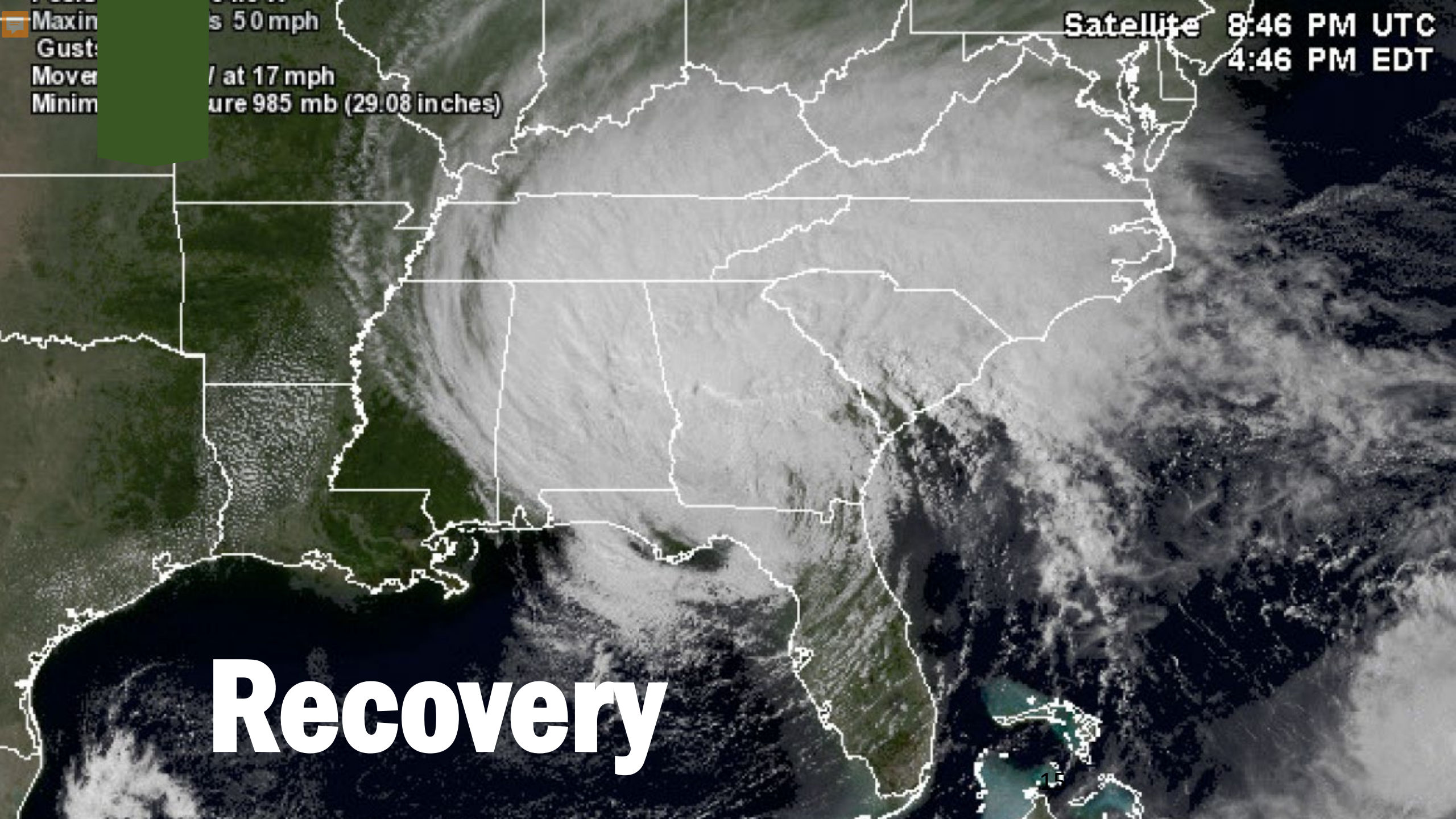
## NATIONAL RESPONSE CENTER

**(NRC)**

**(800) 424-8802**

**24 hours a day, 7 days a week, 365 days a year**

- Hazardous Material releases of Reportable Quantities
- Petroleum spills OF ANY AMOUNT (sheen) on a navigable waterway.
  - USCG has the lead on sheen investigations.
- NRC → SWO, however the SWO will **not** notify the NRC



Maxin  
Gust:  
Mover  
Minim

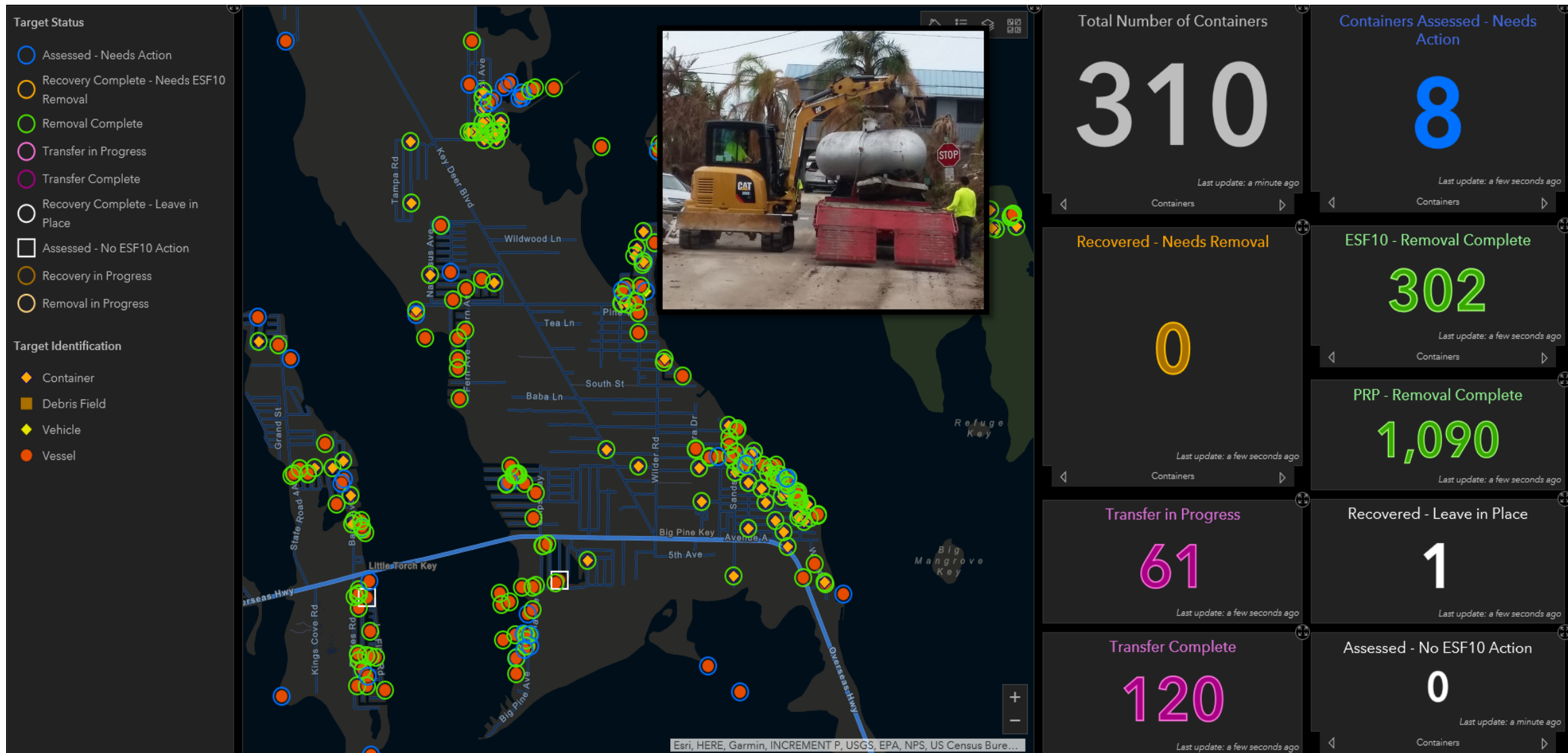
s 50 mph  
/ at 17 mph  
ure 985 mb (29.08 inches)

Satellite 8:46 PM UTC  
4:46 PM EDT

**Recovery**



# Recovery Challenges







# Recovery Challenges



<https://floridadep.gov/dleer/oer/content/contractor-list>



**Lina Cerquera**

**Environmental Consultant  
South District – Office of Emergency  
Response**

**[Lina.Cerquera@FloridaDEP.gov](mailto:Lina.Cerquera@FloridaDEP.gov)**

**239-344-5707**