



Office of Emergency Response

Preparedness / Response / Recovery



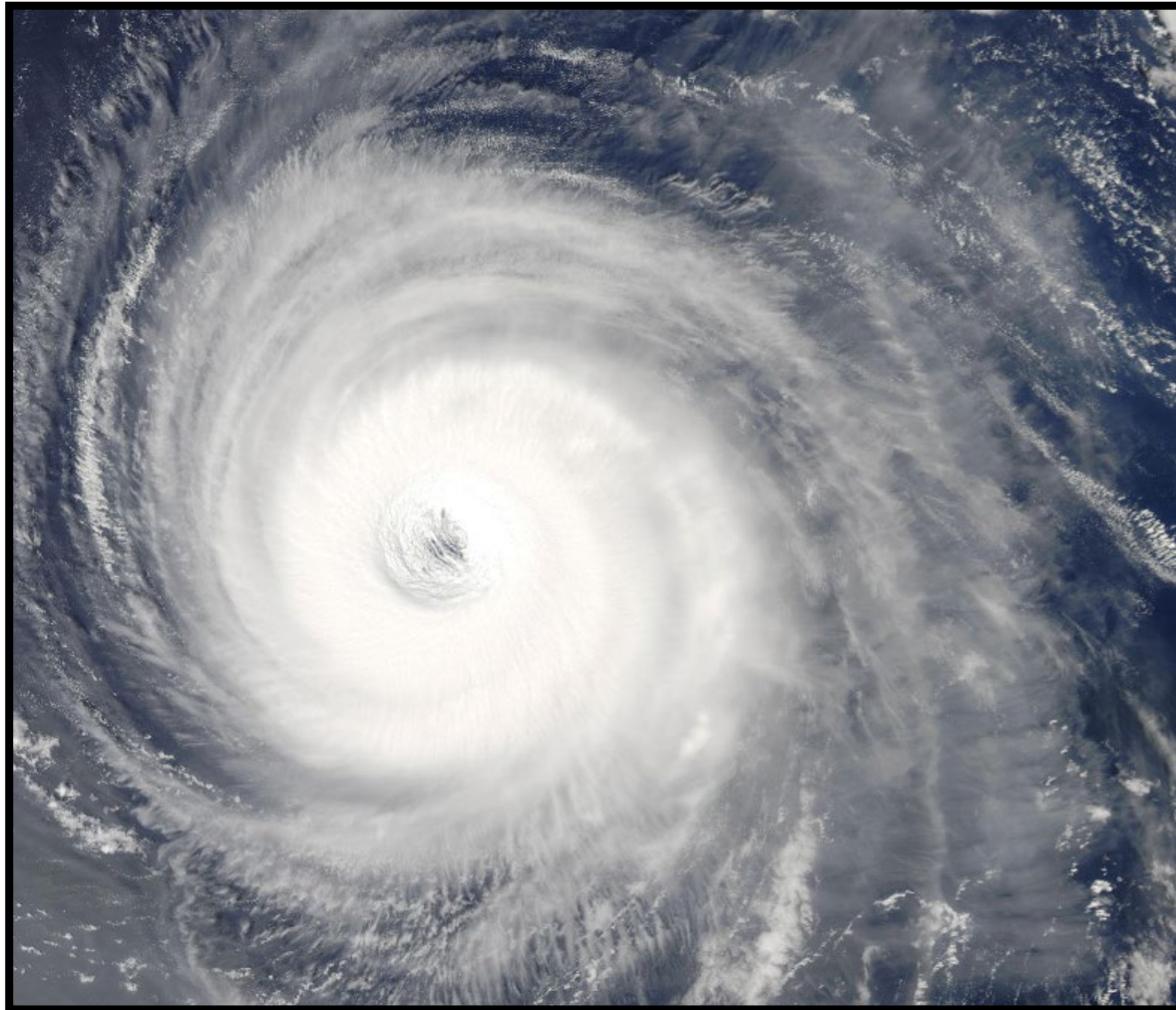
Office of Emergency Response



The Office of Emergency Response provides statewide response to coastal and inland oil spills or hazardous material incidents that present an imminent threat to public health, welfare, safety and the environment.



Office of Emergency Response



- **State Emergency Response Team (SERT)**
- **Emergency Support Function (ESF-10)**
- **Comprehensive Emergency Management Plan (CEMP)**
- **Emergency Coordinating Officer (ECO)**

Preparedness





Preparedness Challenges



- www.FloridaDisaster.org
 - Get A Plan
 - Family
 - Business
 - Special Needs
 - Search Box: “LEPC”



Preparedness Challenges

H
A
Z
A
R
D
O
U
S
W
A
S
T
E



<https://floridadep.gov/waste/permitting-compliance-assistance/documents/management-storm-generated-hazardous-waste>



Preparedness Challenges

**B
O
A
T
S**



<https://public.myfwc.com/LE/ArrestNet/DerelictVessel/VesselMap.aspx>



Response





Response Challenges

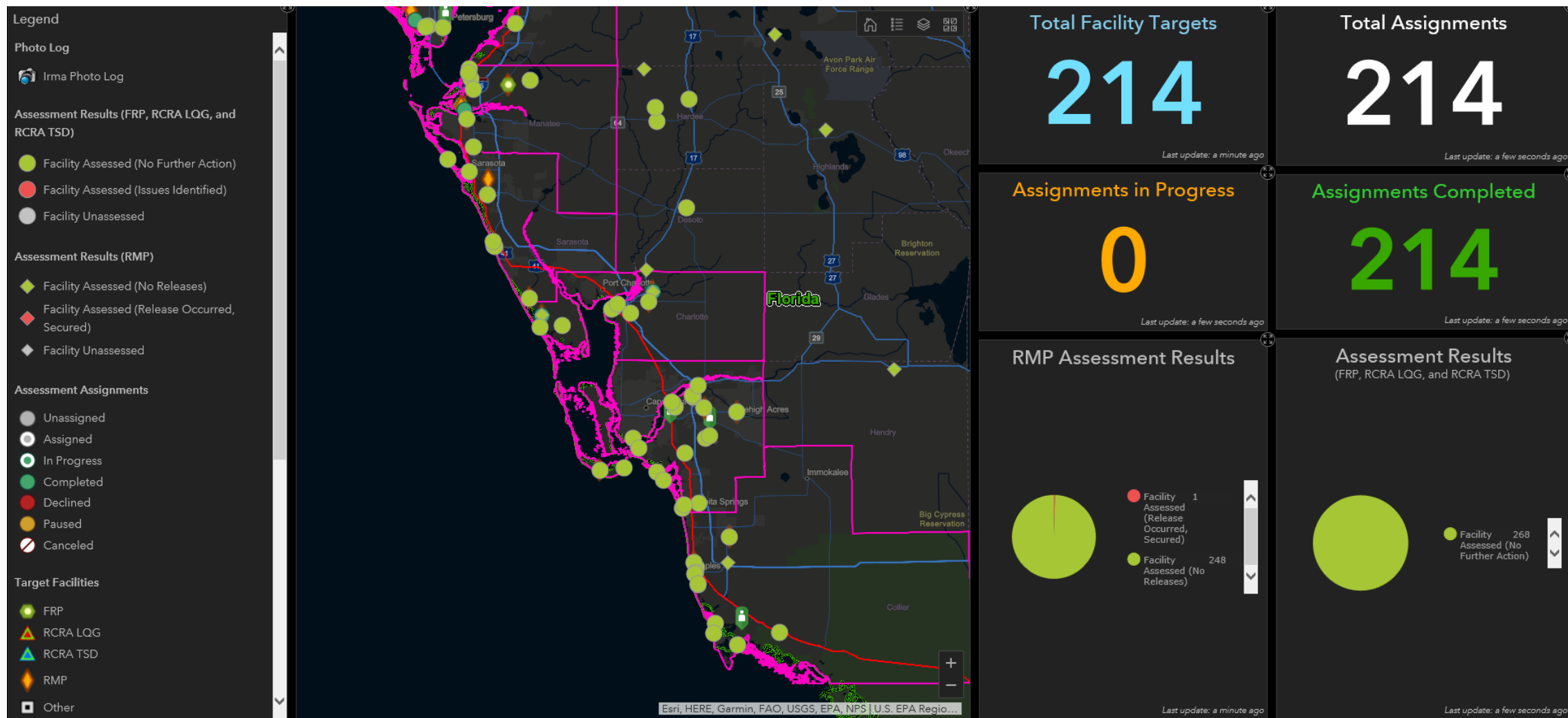
H
A
Z
A
R
D
O
U
S
W
A
S
T
E



<https://floridadep.gov/waste/permitting-compliance-assistance/documents/management-storm-generated-hazardous-waste>



Response Challenges





Response Challenges

B
O
A
T
S



<https://public.myfwc.com/LE/ArrestNet/DerelictVessel/VesselMap.aspx>



When to Reach Us?

ALL calls should be routed thru the SWO/NRC:

- ✓ Hazardous Material Reportable Quantities
- ✓ Any petroleum discharge to surface waters
- ✓ Petroleum: 25 gallons on pervious surface
- ✓ Abandoned containers
- ✓ Require state on-scene assistance and/or guidance

Section 403.077: Public Notification of Pollution

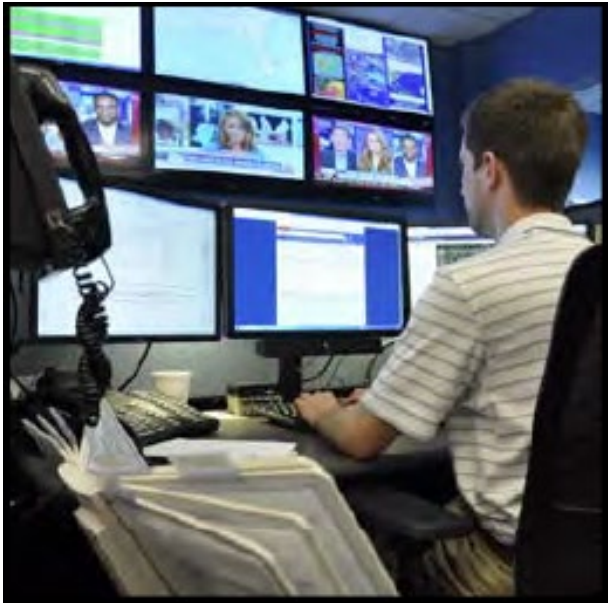
- <https://floridadep.gov/pollutionnotice>





How to Reach Us?

State Watch Office (SWO)
(800) 320-0519



- **24 hours a day, 7 days a week, 365 days a year**
- **Petroleum \geq 25 gallons on pervious surfaces**
- **Must report incidents within 24 hours**
- **When in doubt...Report it!**



How to Reach Us?



NATIONAL RESPONSE CENTER

(NRC)

(800) 424-8802

24 hours a day, 7 days a week, 365 days a year

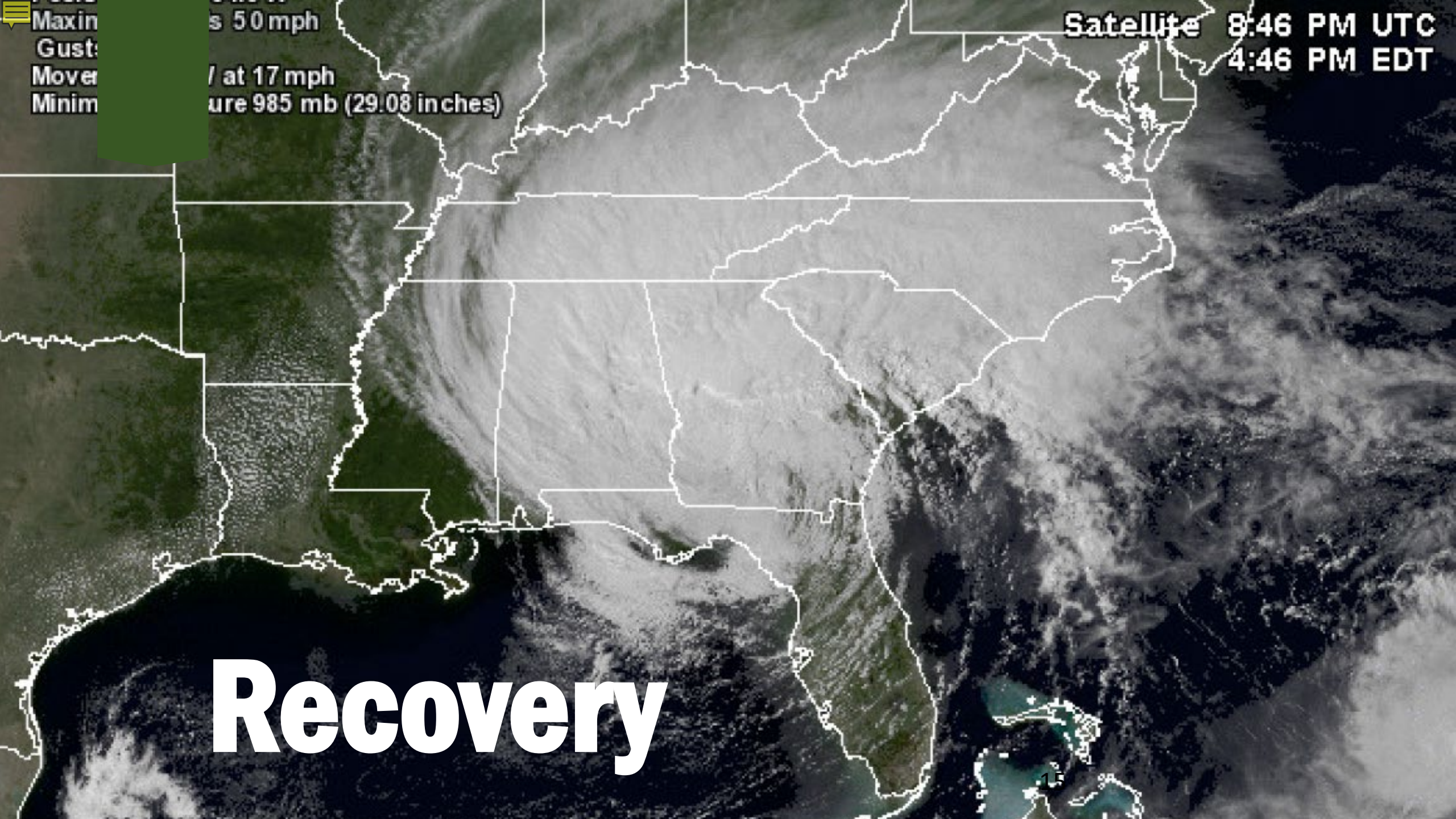
- Hazardous Material releases of Reportable Quantities
- Petroleum spills OF ANY AMOUNT (sheen) on a navigable waterway.
 - USCG has the lead on sheen investigations.
- NRC → SWO, however the SWO will **not** notify the NRC

Maxin
Gust:
Mover
Minim

s 50 mph
/ at 17 mph
ure 985 mb (29.08 inches)

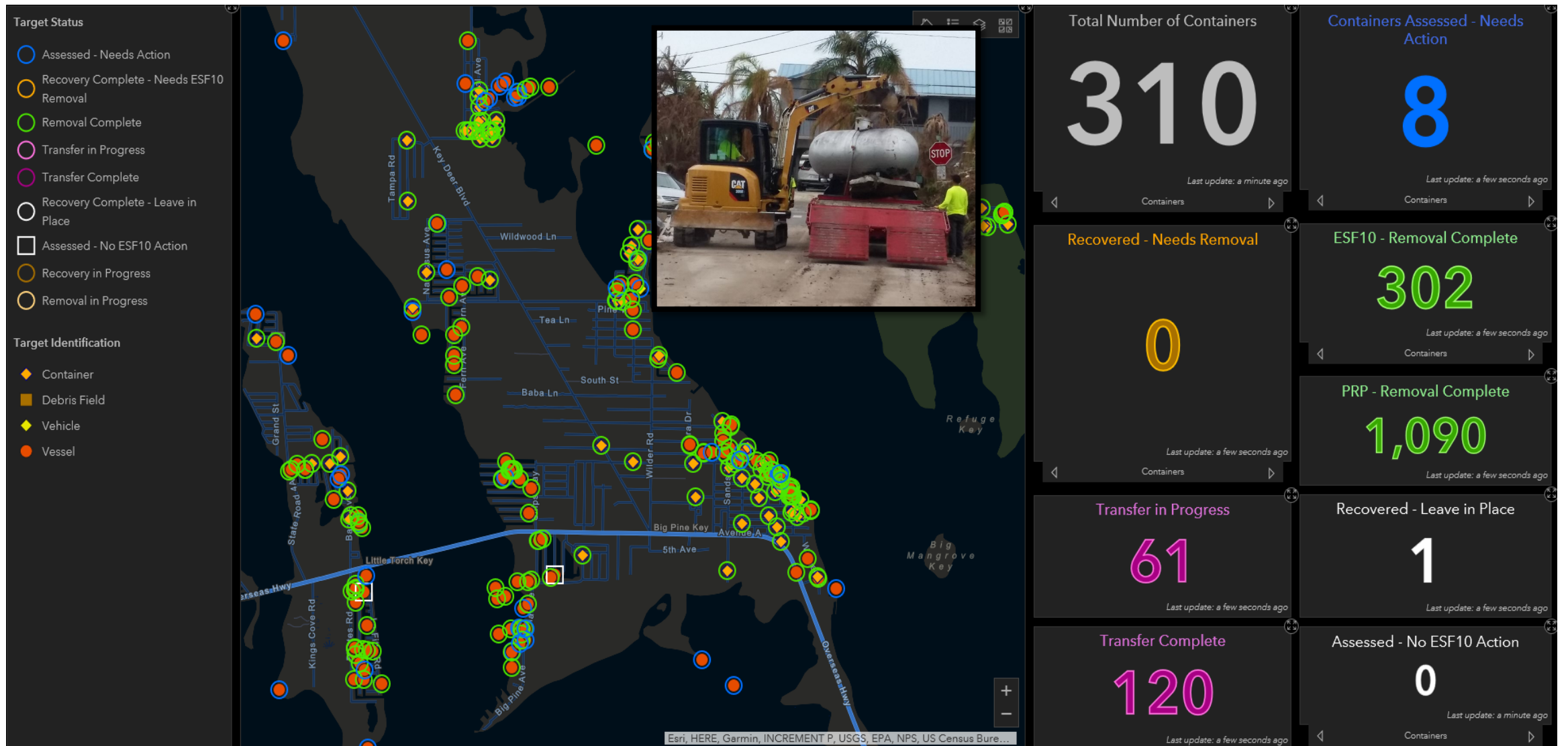
Satellite 8:46 PM UTC
4:46 PM EDT

Recovery





Recovery Challenges





Recovery Challenges



<https://floridadep.gov/dleer/oer/content/contractor-list>



Lina Cerquera

**Environmental Consultant
South District – Office of Emergency
Response**

Lina.Cerquera@FloridaDEP.gov

239-344-5707