

Florida Department of Environmental Protection



BMA Process Review

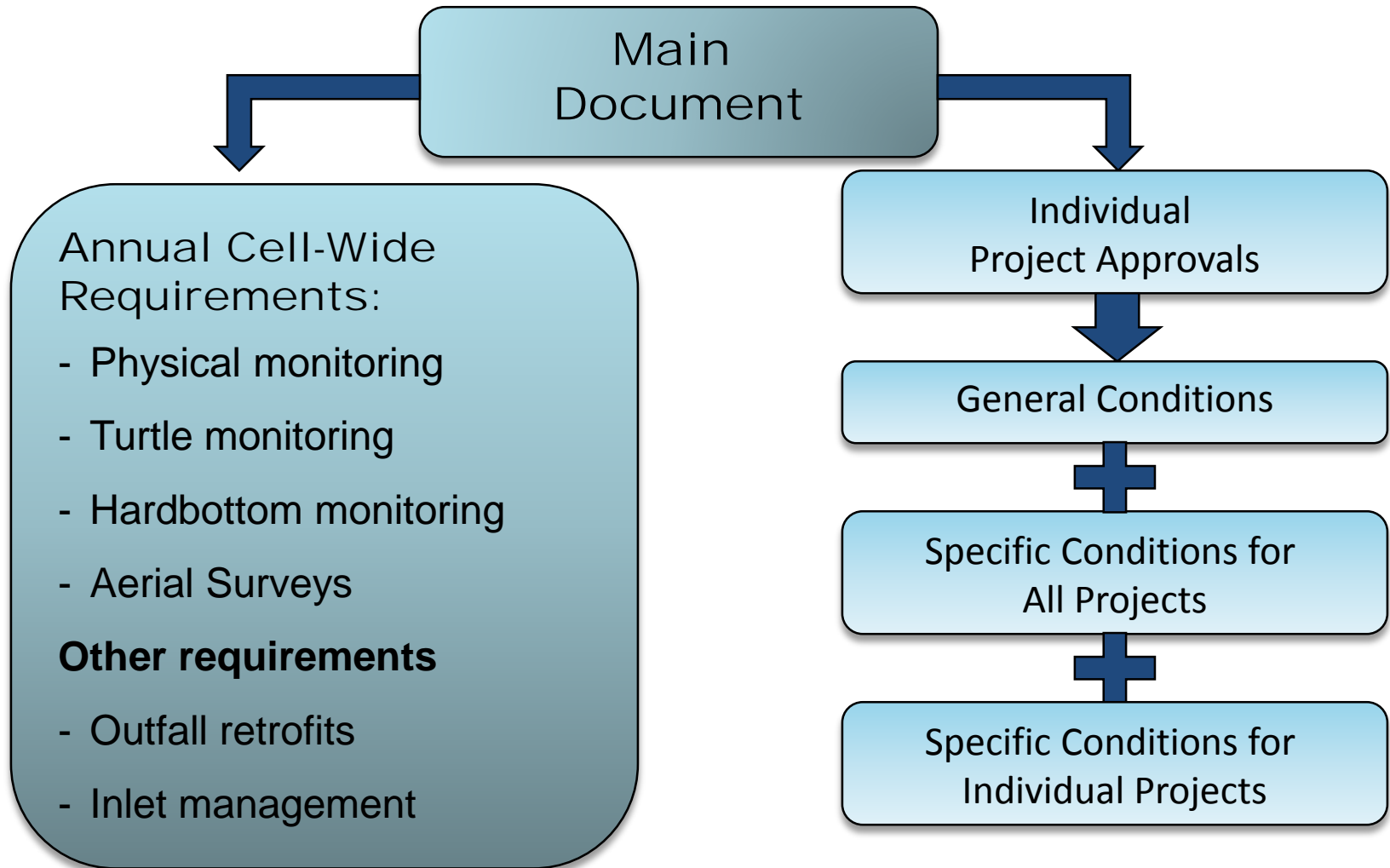
December 4, 2014

*Lainie Edwards, Ph.D., BMES Program Administrator
Division of Water Resource Management
Florida Department of Environmental Protection*





BMA Processes at Work



IPA Process

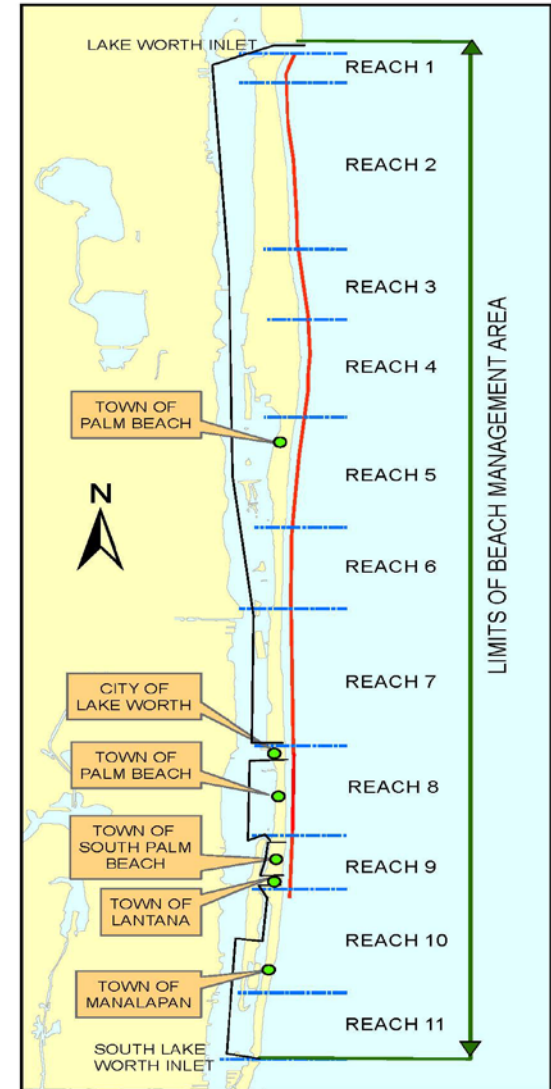
- Individual Project Approval (IPA)
 - Check List
 - Appendix F of BMA
 - In-Water Projects
 - Dune Restoration
 - RAI Cycle
 - Sufficiency Letter
 - IPA Issuance



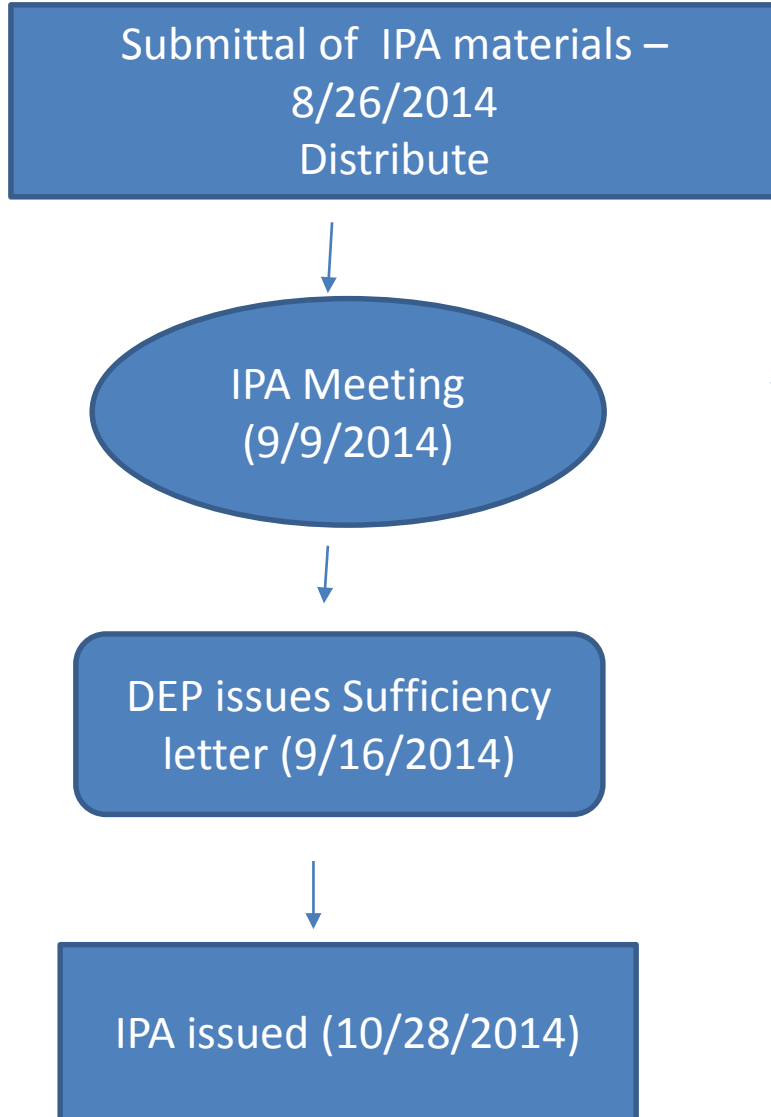


IPA - Projects

- Mid-Town
 - Offshore BA
 - North and South Segment
- Phipps / Reach 7 Beach and Dune Restoration
 - Sand excavated from Mid-Town
 - Truck hauled South
- Reach 8 Dune Restoration
 - Offshore Sand
 - Stockpiled during Mid-town
 - Truck hauled south



IPA timeline



Annual Monitoring

- Initial coordination: HB and turtle monitoring
 - First year of HB mapping extensive
 - Weather played a role
 - Training / coordination of turtle monitors
- Some adjustments needed





Stormwater Outfall Removal





BMA Processes at Work

- IPA Process
 - *Better interagency coordination*
 - *Permitting process flexibility*
 - *Expedited permitting*
 - *Alternative monitoring and reporting requirements*
 - Coordinated permitting and inspections
 - Informal resolution of compliance issues
 - Alternative means of environmental protection
- Annual Requirements / NEB
 - *Annual Monitoring*
 - *Stormwater retrofitting*





Questions / Updates

BMA Website (FL DEP):

[Click Here](#)

Department Contact:

Lainie Edwards, Ph.D.

[Click Here](#)

850-245-7617