

FY 2015-16 PRP ENCUMBRANCE ACTIVITY

2015-2016 FISCAL ACTIVITY BY MONTH as of 08-28-2015			
Month	Projection per Month	Total Encumbered Amount (Includes POs, COs, Utilities and Adjustments)	Percentage
July 2015	\$ 10,800,000	\$ 12,077,442	112%
Aug 2015	\$ 12,200,000	\$ 23,062,722	189%
Sept 2015	\$ 19,100,000		0%
Oct 2015	\$ 20,900,000		0%
Nov 2015	\$ 16,100,000		0%
Dec 2015	\$ 14,900,000		0%
Jan 2016	\$ 10,400,000		0%
Feb 2016	\$ 11,300,000		0%
Mar 2016	\$ 9,600,000		0%
April 2016	\$ 15,000,000		0%
May 2016	\$ 16,200,000		0%
June 2016	\$ 10,100,000		0%
	\$ 166,600,000	\$ 35,140,164	21%

AUGUST 2015 NET RESULTS as of 08-28-2015		
Phase/Activity	Total Number of Projects Funded by PRP	Total Amount Encumbered
Low Score Site Initiative (LSSI)	71	\$ 1,449,877
Site Assessment (LSA or New)	58	\$ 1,639,198
Source Removal (Dig or FPR)	16	\$ 2,398,740
RAP (or Mod or PT)	32	\$ 1,143,618
RAC	8	\$ 827,790
O & M	13	\$ 1,284,118
PARM	11	\$ 659,318
NAM	63	\$ 1,106,372
Well Abandonment/SRCO	25	\$ 201,719
STCM Change Orders and Adjustments		\$ 12,182,860
Totals	297	\$ 22,893,610
Utilities		\$ 169,112
Grand Total		\$ 23,062,722

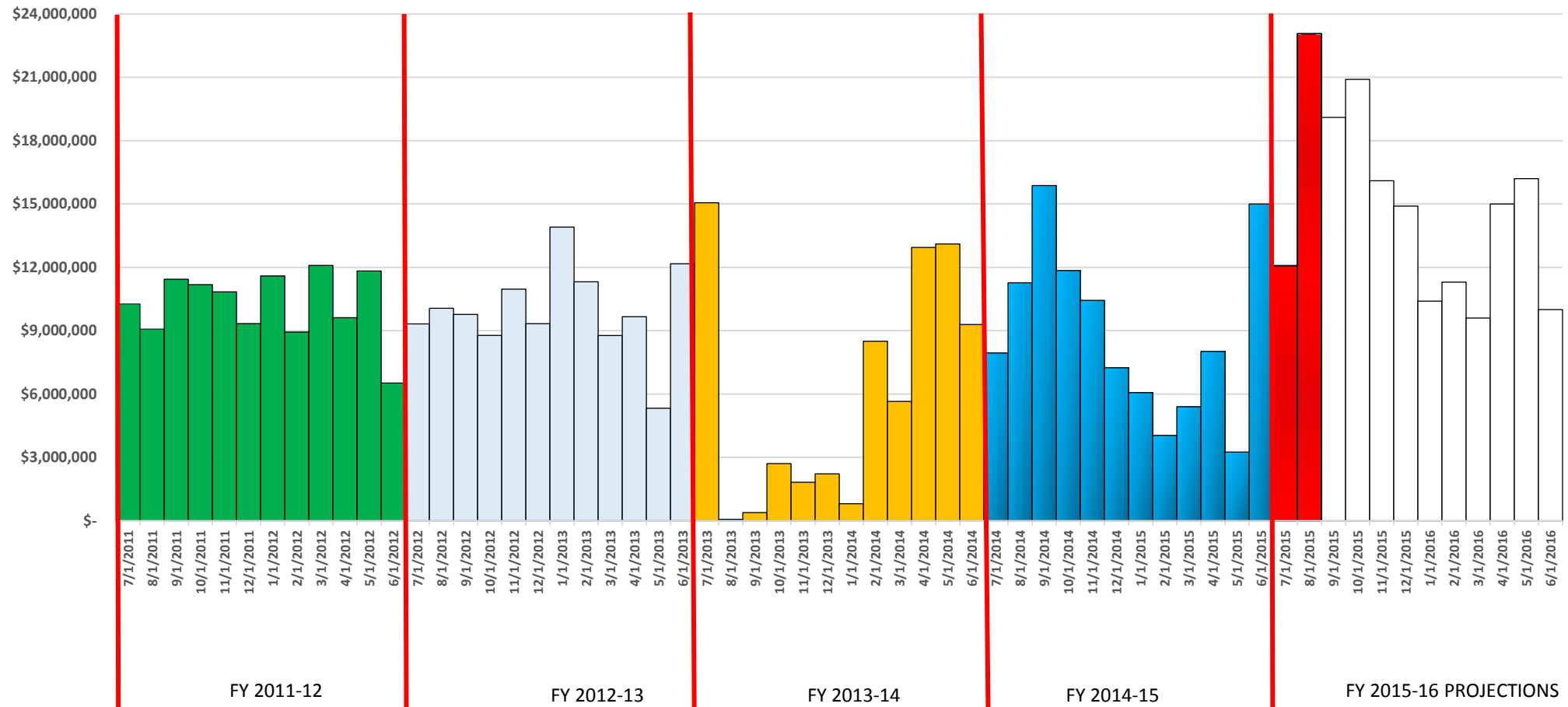
TOTAL ENCUMBERED BY FISCAL YEAR ALLOCATION as of 08-28-2015			
FISCAL YEAR	FCO APPROPRIATION AMOUNT	TOTAL AMOUNT ENCUMBERED	FCO APPROPRIATION BALANCE
FY 2014-15	\$ 110,000,000	\$ 96,188,565	\$ 13,811,435
FY 2015-16	\$ 125,000,000	\$ -	\$ 125,000,000

FY 2015-16 PRP ENCUMBRANCES BY ACTIVITY

2015-2016 MONTHLY FISCAL ACTIVITY as of 08-28-2015

CLEANUP ACTIVITY	CURRENT COUNT ENCUMBERED	CURRENT AMOUNT ENCUMBERED	CURRENT AVERAGE COST FY 2015-16
LOW SCORE SITE INITIATIVE (LSSI)	120	\$ 2,440,485	\$ 20,337
SITE ASSESSMENT (SA)	116	\$ 4,056,573	\$ 34,970
SOURCE REMOVAL (SR)	33	\$ 7,705,993	\$ 233,515
REMEDIAL ACTION PLAN (RAP)	52	\$ 1,831,855	\$ 35,228
REMEDIAL ACTION CONSTRUCTION (RAC)	13	\$ 1,205,922	\$ 92,763
OPERATION & MAINTENANCE (O&M)	16	\$ 1,635,802	\$ 102,238
POST ACTIVE REMEDIAL MONITORING (PARM)	20	\$ 768,549	\$ 38,427
NATURAL ATTENUATION MONITORING (NAM)	107	\$ 1,441,998	\$ 13,477
WELL ABANDONMENT (WA)	34	\$ 296,313	\$ 8,715
STCM CHANGE ORDERS & ADJUSTMENTS		\$ 13,433,174	
UTILITIES		\$ 323,501	
TOTAL	511	\$ 35,140,164	

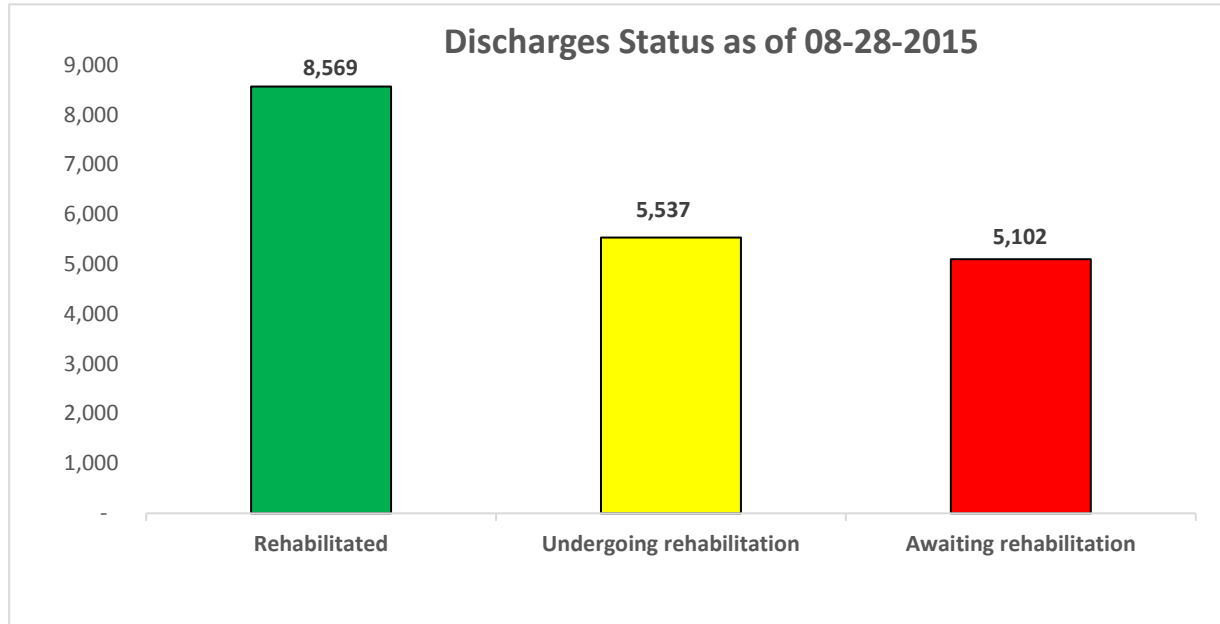
Work Orders (WO) and Task Assignments (TA) Amount Created per Month July 1, 2011 through August 28, 2015 (and Projections through 6-30-2016)



CURRENT ELIGIBLE DISCHARGE STATUS

Eligible Discharge Status as of 08-28-15		
STATUS	COUNT	Percent
Rehabilitated	8,569	45%
Undergoing rehabilitation	5,537	29%
Awaiting rehabilitation	5,102	27%
Funding eligible discharges	19,208	100%

Discharges Awaiting Rehabilitation as of 08-28-15		
Score	Discharges	Percentage
≤ 29	4,968	97.4%
30 – 45	106	2.1%
46 – 74	22	0.4%
≥ 75	6	0.1%
Total	5,102	100.0%

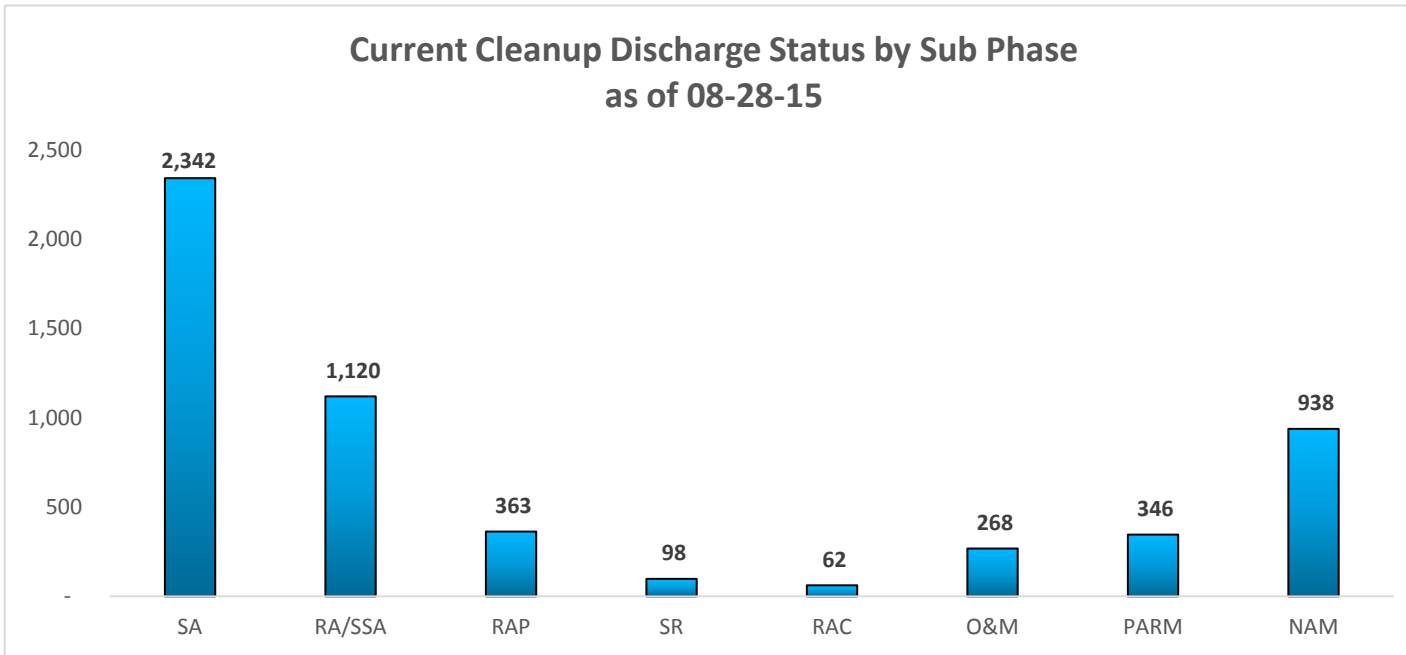


NOTE: THE "CURRENT DISCHARGE STATUS" REPORT IS UPDATED THE END OF EACH MONTH.

CURRENT ELIGIBLE DISCHARGE STATUS

Current Monthly Cleanup Discharge Status by Sub Phase as of 08-28-15									
Score Range	SA	RA/SSA	RAP	SR	RAC	O&M	PARM	NAM	Grand Total
< 29	1,103	351	53	50	11	71	38	69	1,746
30-45	1,076	313	111	15	6	24	27	153	1,725
46-74	132	381	167	33	42	143	223	586	1,707
> 75	31	75	32		3	30	58	130	359
Grand Total	2,342	1,120	363	98	62	268	346	938	5,537

**Current Cleanup Discharge Status by Sub Phase
as of 08-28-15**



NAM	NATURAL ATTENUATION MONITORING
O&M	OPERATION & MAINTENANCE
PARM	POST ACTIVE REMEDIAL MONITORING
RA/ SSA	REMEDIAL ACTION/ SUPPLEMENTAL SITE
RAC	REMEDIAL ACTION CONSTRUCTION
RAP	REMEDIAL ACTION PLAN
SA	SITE ASSESSMENT
SR	SOURCE REMOVAL

CURRENT ELIGIBLE DISCHARGE STATUS

FY 2015-16 DISCHARGES CLOSED as of 08-28-2015		
Projection FY 2015-16	Current Discharges Closed	Percent
350	55	15.7%

