

## FY 2015-16 PRP ENCUMBRANCE ACTIVITY

2015-2016 FISCAL ACTIVITY BY MONTH as of 02-24-2016			
Month	Projection per Month (*)	Total Encumbered Amount (Includes POs, COs, Utilities and Adjustments)	Percentage
July 2015	\$ 10,800,000	\$ 12,077,442	112%
Aug 2015	\$ 12,200,000	\$ 23,062,723	189%
Sept 2015	\$ 19,100,000	\$ 11,785,428	62%
Oct 2015	\$ 20,900,000	\$ 12,581,388	60%
Nov 2015	\$ 11,800,000	\$ 15,269,346	129%
Dec 2015	\$ 11,900,000	\$ 9,418,112	79%
Jan 2016	\$ 12,800,000	\$ 8,540,065	67%
Feb 2016	\$ 12,900,000	\$ 10,102,493	78%
Mar 2016	\$ 13,200,000		0%
April 2016	\$ 14,700,000		0%
May 2016	\$ 13,600,000		0%
June 2016 (**)	\$ 21,100,000		0%
<b>Grand Total</b>	<b>\$ 175,000,000</b>	<b>\$ 102,836,997</b>	<b>59%</b>

(\*) Starting in October 2015, PRP will be limiting monthly funding to \$12.7M throughout FY 2015-16 to stabilize the workflow.

(\*\*) Includes Infrastructure Contracts

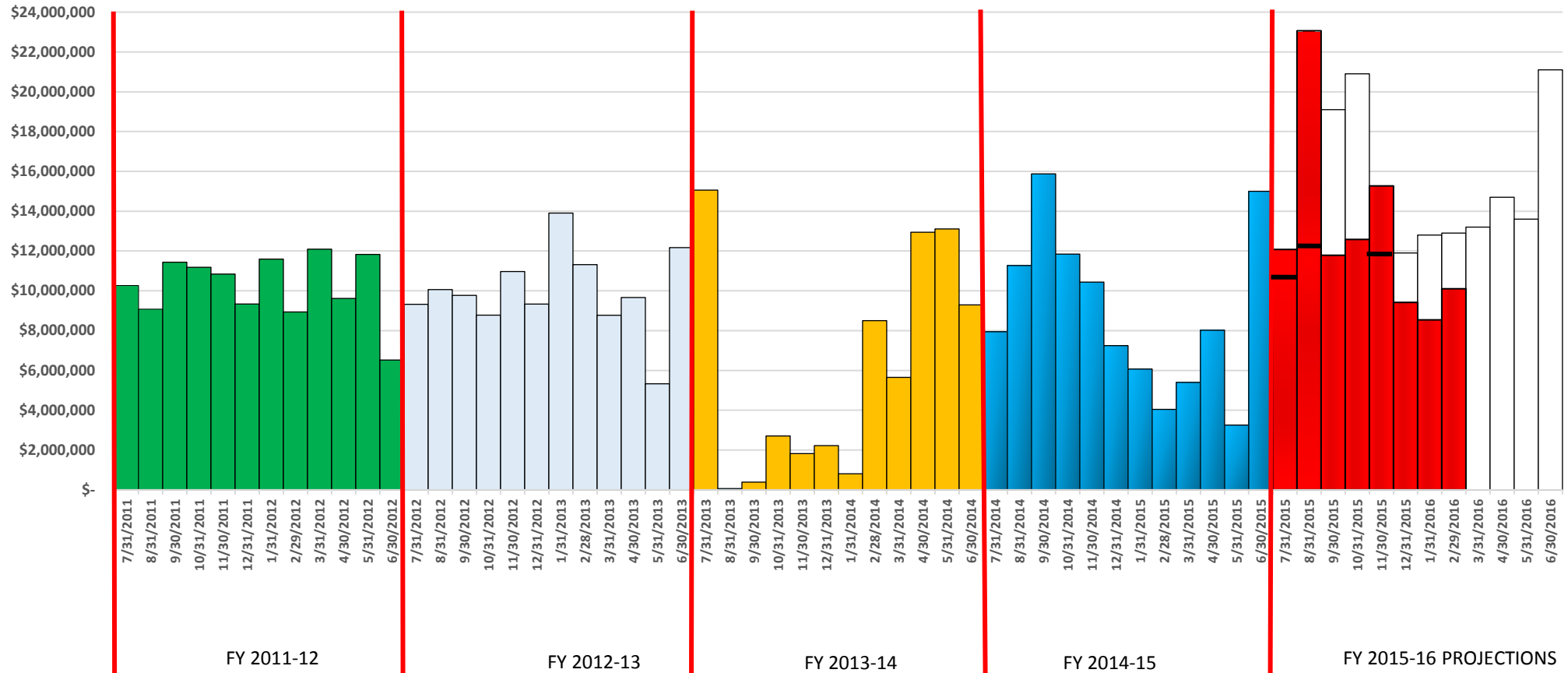
FEBRUARY 2016 NET RESULTS as of 02-24-2016		
Phase/Activity	Total Number of Projects Funded by PRP	Total Amount Encumbered
Low Score Site Initiative (LSSI)	57	\$ 1,168,486
Site Assessment (LSA or New)	167	\$ 6,217,714
Source Removal (Dig or FPR)	7	\$ 1,182,282
RAP (or Mod or PT)	28	\$ 707,792
RAC	8	\$ 562,588
O & M	10	\$ 888,043
PARM	9	\$ 149,914
NAM	63	\$ 596,705
Well Abandonment/SRCO	19	\$ 129,819
<b>Totals</b>	<b>368</b>	<b>\$ 11,603,344</b>
STCM Change Orders and Adjustments		\$ (1,671,957)
Utilities		\$ 171,106
<b>Grand Total</b>		<b>\$ 10,102,493</b>

TOTAL ENCUMBERED BY FISCAL YEAR ALLOCATION as of 02-24-2016			
FISCAL YEAR	FCO APPROPRIATION AMOUNT	TOTAL AMOUNT ENCUMBERED	FCO APPROPRIATION BALANCE
FY 2014-15	\$ 110,000,000	\$ 110,000,000	\$ -
FY 2015-16	\$ 125,000,000	\$ 45,523,068	\$ 79,476,932

FY 2015-16 PRP ENCUMBRANCES BY ACTIVITY

<b>2015-2016 MONTHLY FISCAL ACTIVITY as of 02-24-2016</b>			
<b>CLEANUP ACTIVITY</b>	<b>CURRENT AMOUNT ENCUMBERED</b>	<b>CURRENT COUNT ENCUMBERED</b>	<b>CURRENT AVERAGE COST FY 2015-16</b>
LOW SCORE SITE INITIATIVE (LSSI)	\$ 9,299,012	452	\$ 20,573
SITE ASSESSMENT (SA)	\$ 36,157,624	930	\$ 38,879
SOURCE REMOVAL (SR)	\$ 10,829,706	55	\$ 196,904
REMEDIAL ACTION PLAN (RAP)	\$ 6,239,837	189	\$ 33,015
REMEDIAL ACTION CONSTRUCTION (RAC)	\$ 14,962,730	85	\$ 176,032
OPERATION & MAINTENANCE (O&M)	\$ 9,366,182	92	\$ 101,806
POST ACTIVE REMEDIAL MONITORING (PARM)	\$ 1,907,411	70	\$ 27,249
NATURAL ATTENUATION MONITORING (NAM)	\$ 4,964,457	439	\$ 11,309
WELL ABANDONMENT (WA)	\$ 1,382,412	144	\$ 9,600
<b>TOTAL CLEANUP ACTIVITY</b>	<b>\$ 95,109,372</b>	<b>2456</b>	
STCM CHANGE ORDERS & ADJUSTMENTS	\$ 6,369,517		
UTILITIES	\$ 1,358,108		
<b>GRAND TOTAL</b>	<b>\$ 102,836,997</b>		

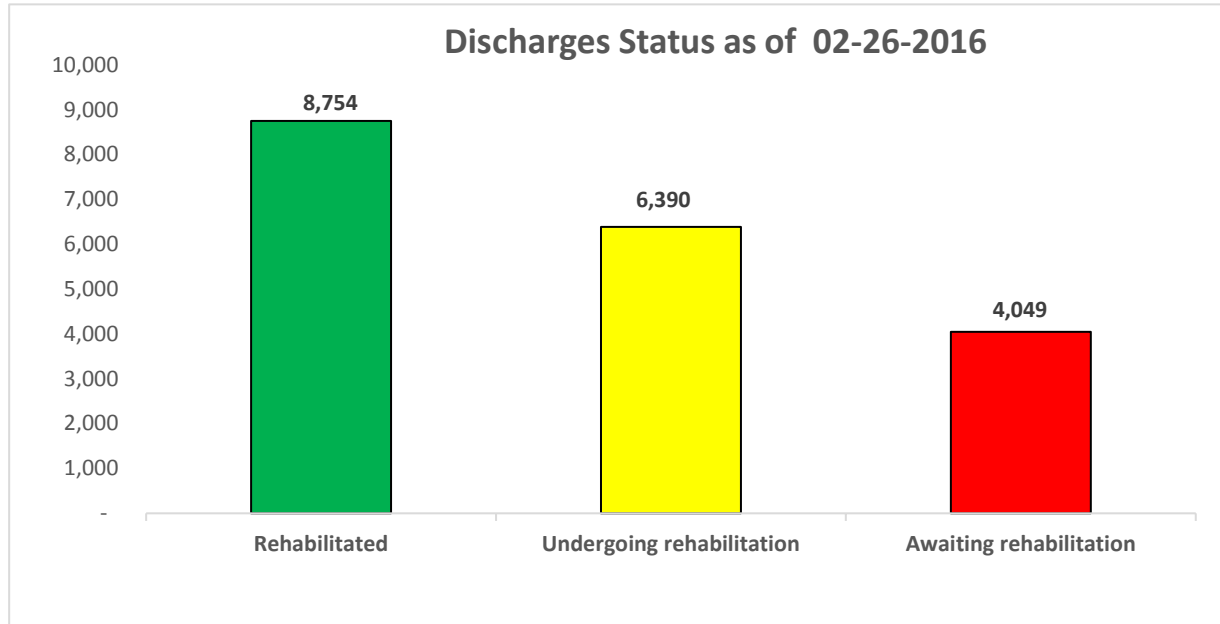
## Work Orders (WO) and Task Assignments (TA) Amount Created per Month July 1, 2011 through February 24, 2016 (and Projections through 6-30-2016)



CURRENT ELIGIBLE DISCHARGE STATUS

Eligible Discharge Status as of 02-26-2016		
STATUS	COUNT	Percent
Rehabilitated	8,754	46%
Undergoing rehabilitation	6,390	33%
Awaiting rehabilitation	4,049	21%
Funding eligible discharges	19,193	100%

Discharges Awaiting Rehabilitation as of 02-26-2016		
Score	Discharges	Percentage
≤ 29	3,899	96.3%
30 – 45	106	2.6%
46 – 74	32	0.8%
≥ 75	12	0.3%
<b>Total</b>	<b>4,049</b>	<b>100.0%</b>



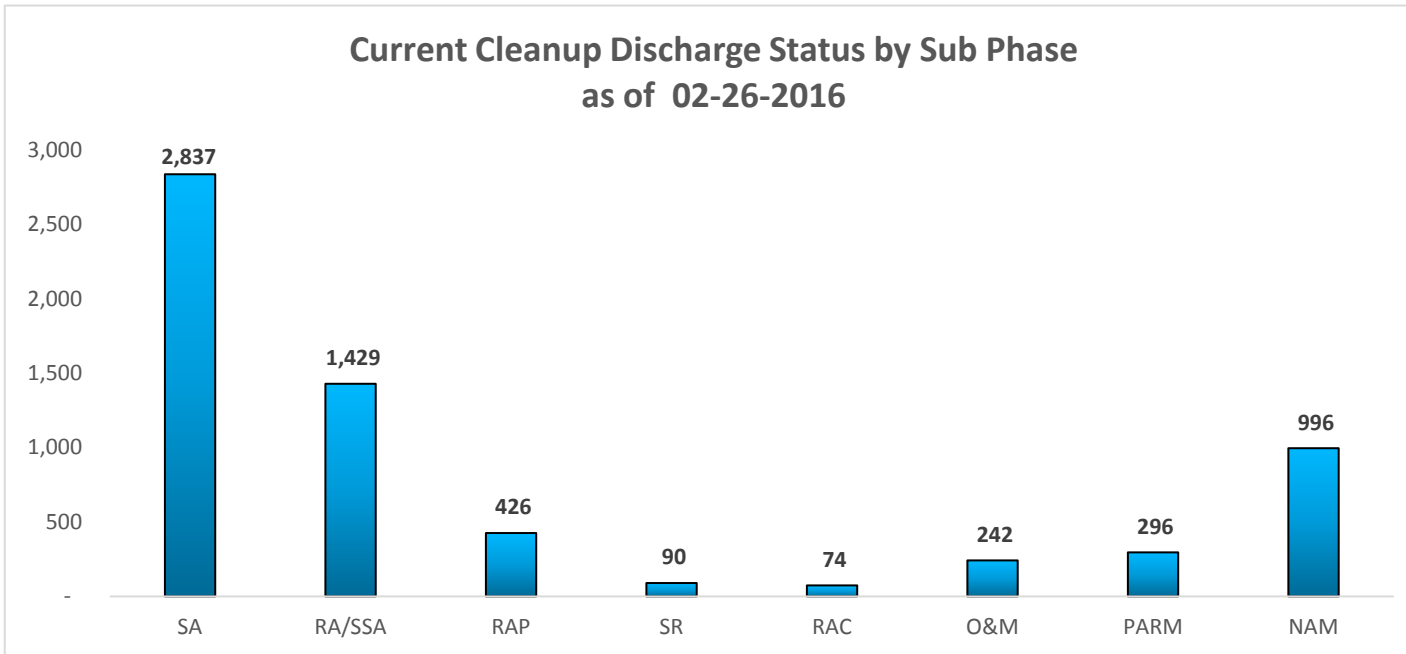
NOTE: THE "CURRENT ELIGIBLE DISCHARGE STATUS" REPORT IS UPDATED THE END OF EACH MONTH.

## CURRENT ELIGIBLE DISCHARGE STATUS

**Current Monthly Cleanup Discharge Status by Sub Phase as of 02-26-2016**

Score Range	SA	RA/SSA	RAP	SR	RAC	O&M	PARM	NAM	Grand Total
< 29	1,806	550	80	54	16	72	39	80	2,697
30-45	907	339	149	13	6	20	32	213	1,679
46-74	101	449	159	23	44	127	180	580	1,663
> 75	23	91	38		8	23	45	123	351
<b>Grand Total</b>	<b>2,837</b>	<b>1,429</b>	<b>426</b>	<b>90</b>	<b>74</b>	<b>242</b>	<b>296</b>	<b>996</b>	<b>6,390</b>

**Current Cleanup Discharge Status by Sub Phase as of 02-26-2016**



SA	SITE ASSESSMENT
RA/ SSA	REMEDIAL ACTION/ SUPPLEMENTAL SITE
RAP	REMEDIAL ACTION PLAN
SR	SOURCE REMOVAL
RAC	REMEDIAL ACTION CONSTRUCTION
O&M	OPERATION & MAINTENANCE
PARM	POST ACTIVE REMEDIAL MONITORING
NAM	NATURAL ATTENUATION MONITORING

## CURRENT ELIGIBLE DISCHARGE STATUS

FY 2015-16 DISCHARGES CLOSED as of 02-26-2016		
Projection FY 2015-16	Current Discharges Closed	Percent
350	223	63.7%

