

FY 2015-16 PRP ENCUMBRANCE ACTIVITY

2015-2016 FISCAL ACTIVITY BY MONTH as of 11-25-2015			
Month	Projection per Month (*)	Total Encumbered Amount (Includes POs, COs, Utilities and Adjustments)	Percentage
July 2015	\$ 10,800,000	\$ 12,077,442	112%
Aug 2015	\$ 12,200,000	\$ 23,062,723	189%
Sept 2015	\$ 19,100,000	\$ 11,785,428	62%
Oct 2015	\$ 20,900,000	\$ 12,581,388	60%
Nov 2015	\$ 11,800,000	\$ 15,269,346	129%
Dec 2015	\$ 11,900,000	\$ -	0%
Jan 2016	\$ 12,800,000	\$ -	0%
Feb 2016	\$ 12,900,000	\$ -	0%
Mar 2016	\$ 13,200,000	\$ -	0%
April 2016	\$ 14,700,000	\$ -	0%
May 2016	\$ 13,600,000	\$ -	0%
June 2016 (**)	\$ 21,100,000	\$ -	0%
Grand Total	\$ 175,000,000	\$ 74,776,326	43%

(*) Starting in October 2015, PRP will be limiting monthly funding to \$12.7M throughout FY 2015-16 to stabilize the workflow.

(**) Includes Infrastructure Contracts

NOVEMBER 2015 NET RESULTS as of 11-25-2015		
Phase/Activity	Total Number of Projects Funded by PRP	Total Amount Encumbered
Low Score Site Initiative (LSSI)	71	\$ 1,557,867
Site Assessment (LSA or New)	116	\$ 5,356,323
Source Removal (Dig or FPR)	2	\$ 550,381
RAP (or Mod or PT)	26	\$ 730,720
RAC	24	\$ 4,865,041
O & M	14	\$ 1,623,704
PARM	6	\$ 171,891
NAM	51	\$ 557,390
Well Abandonment/SRCO	21	\$ 121,226
Totals	331	\$ 15,534,543
STCM Change Orders and Adjustments		\$ (412,601)
Utilities		\$ 147,404
Grand Total		\$ 15,269,346

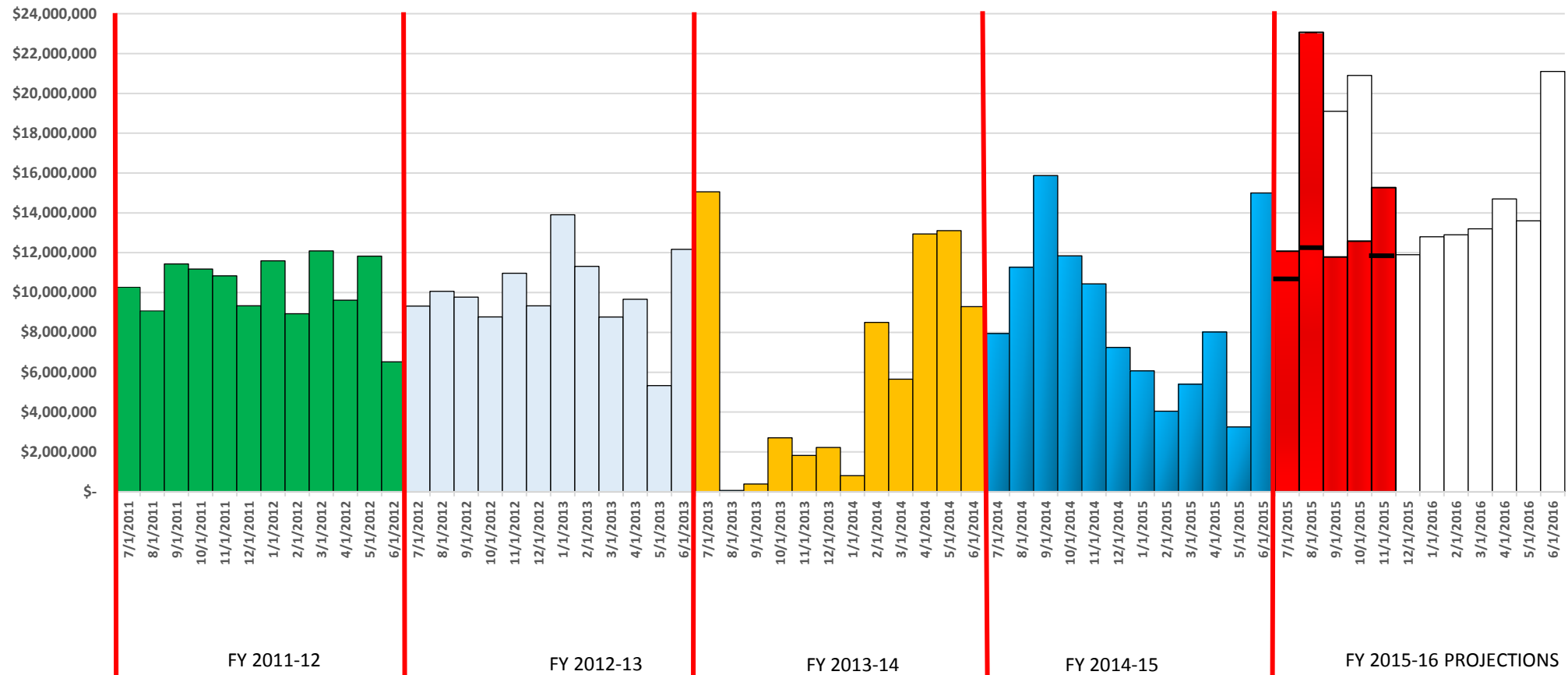
TOTAL ENCUMBERED BY FISCAL YEAR ALLOCATION as of 11-25-2015			
FISCAL YEAR	FCO APPROPRIATION AMOUNT	TOTAL AMOUNT ENCUMBERED	FCO APPROPRIATION BALANCE
FY 2014-15	\$ 110,000,000	\$ 110,000,000	\$ -
FY 2015-16	\$ 125,000,000	\$ 20,071,650	\$ 104,928,350

FY 2015-16 PRP ENCUMBRANCES BY ACTIVITY

2015-2016 MONTHLY FISCAL ACTIVITY as of 11-25-2015

CLEANUP ACTIVITY	CURRENT AMOUNT ENCUMBERED	CURRENT COUNT ENCUMBERED	CURRENT AVERAGE COST FY 2015-16
LOW SCORE SITE INITIATIVE (LSSI)	\$ 6,215,987	296	\$ 21,000
SITE ASSESSMENT (SA)	\$ 17,585,062	445	\$ 39,517
SOURCE REMOVAL (SR)	\$ 9,347,471	45	\$ 207,722
REMEDIAL ACTION PLAN (RAP)	\$ 4,316,781	127	\$ 33,990
REMEDIAL ACTION CONSTRUCTION (RAC)	\$ 13,195,299	65	\$ 203,005
OPERATION & MAINTENANCE (O&M)	\$ 7,032,385	64	\$ 109,881
POST ACTIVE REMEDIAL MONITORING (PARM)	\$ 1,515,906	47	\$ 32,253
NATURAL ATTENUATION MONITORING (NAM)	\$ 3,246,917	267	\$ 12,161
WELL ABANDONMENT (WA)	\$ 716,924	87	\$ 8,241
TOTAL CLEANUP ACTIVITY	\$ 63,172,732	1443	
STCM CHANGE ORDERS & ADJUSTMENTS	\$ 10,763,474		
UTILITIES	\$ 840,120		
GRAND TOTAL	\$ 74,776,326		

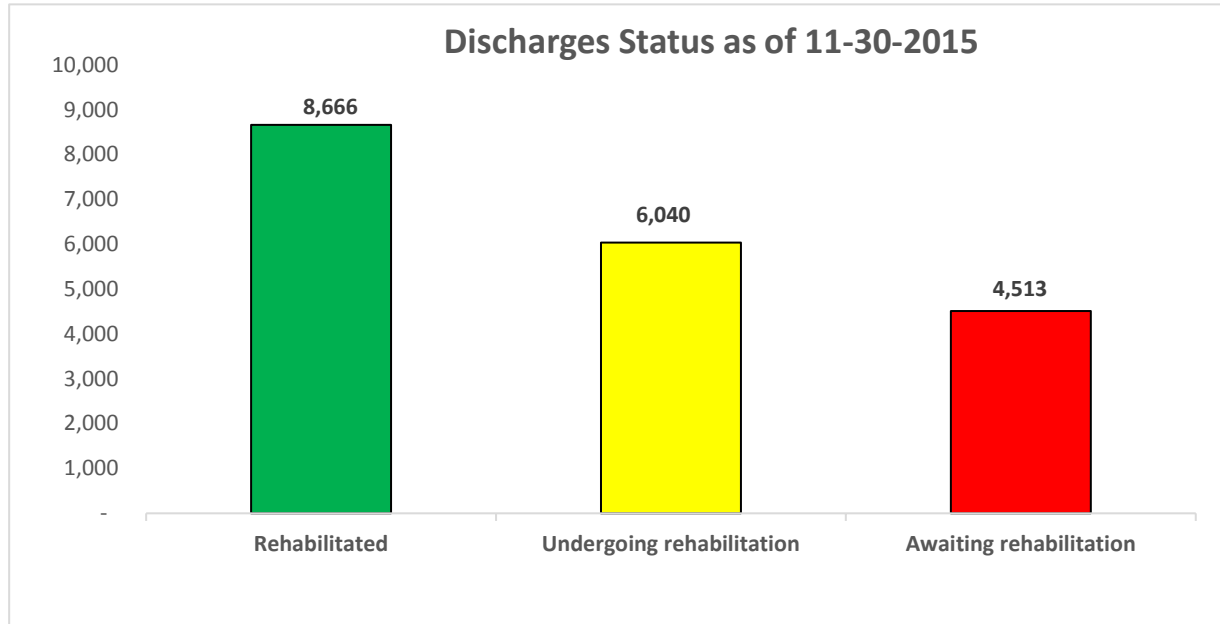
Work Orders (WO) and Task Assignments (TA) Amount Created per Month July 1, 2011 through November 25, 2015 (and Projections through 6-30-2016)



CURRENT ELIGIBLE DISCHARGE STATUS

Eligible Discharge Status as of 11-30-2015		
STATUS	COUNT	Percent
Rehabilitated	8,666	45%
Undergoing rehabilitation	6,040	31%
Awaiting rehabilitation	4,513	23%
Funding eligible discharges	19,219	100%

Discharges Awaiting Rehabilitation as of 11-30-2015		
Score	Discharges	Percentage
≤ 29	4,358	96.6%
30 – 45	106	2.3%
46 – 74	39	0.9%
≥ 75	10	0.2%
Total	4,513	100.0%



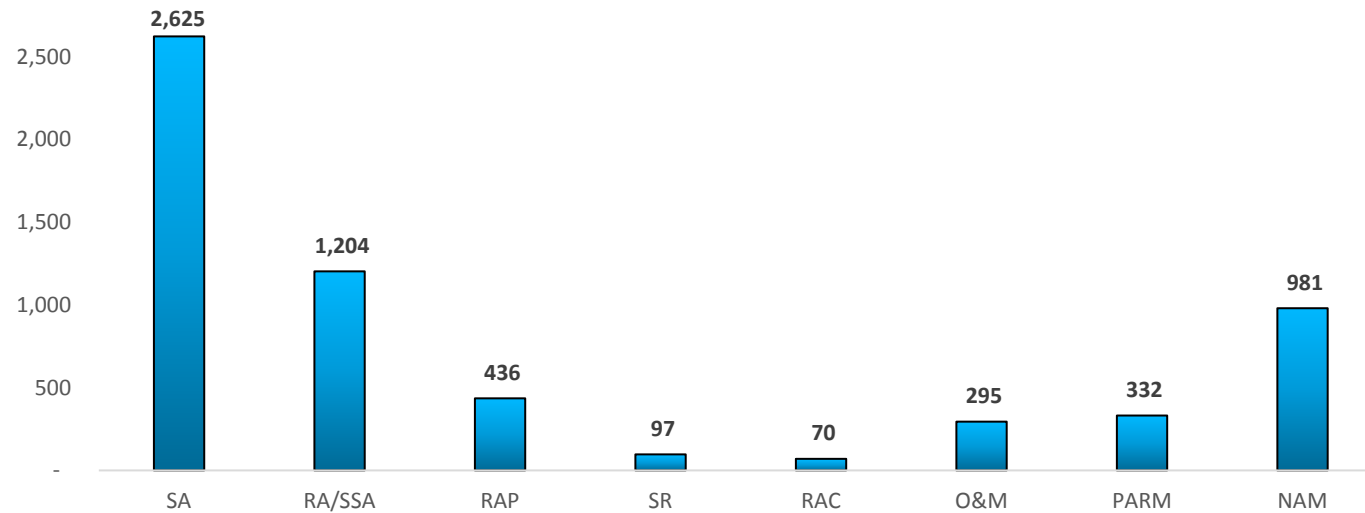
NOTE: THE "CURRENT DISCHARGE STATUS" REPORT IS UPDATED THE END OF EACH MONTH.

CURRENT ELIGIBLE DISCHARGE STATUS

Current Monthly Cleanup Discharge Status by Sub Phase as of 11-30-2015

Score Range	SA	RA/SSA	RAP	SR	RAC	O&M	PARM	NAM	Grand Total
< 29	1,467	452	82	64	20	86	49	84	2,304
30-45	1,006	297	134	13	5	25	30	189	1,699
46-74	122	384	186	20	37	150	198	584	1,681
> 75	30	71	34		8	34	55	124	356
Grand Total	2,625	1,204	436	97	70	295	332	981	6,040

Current Cleanup Discharge Status by Sub Phase as of 11-30-2015



SA	SITE ASSESSMENT
RA/ SSA	REMEDIAL ACTION/ SUPPLEMENTAL SITE
RAP	REMEDIAL ACTION PLAN
SR	SOURCE REMOVAL
RAC	REMEDIAL ACTION CONSTRUCTION
O&M	OPERATION & MAINTENANCE
PARM	POST ACTIVE REMEDIAL MONITORING
NAM	NATURAL ATTENUATION MONITORING

CURRENT ELIGIBLE DISCHARGE STATUS

FY 2015-16 DISCHARGES CLOSED as of 11-30-2015		
Projection FY 2015-16	Current Discharges Closed	Percent
350	144	41.1%

