

Current Eligible Discharge Statuses

as of December 28, 2018

Completed
10,591

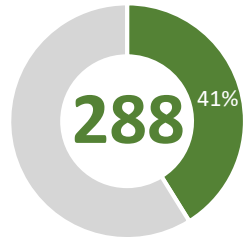
Active
6,100

Awaiting
2,671



FY 2018-19 Discharges Closed to Date

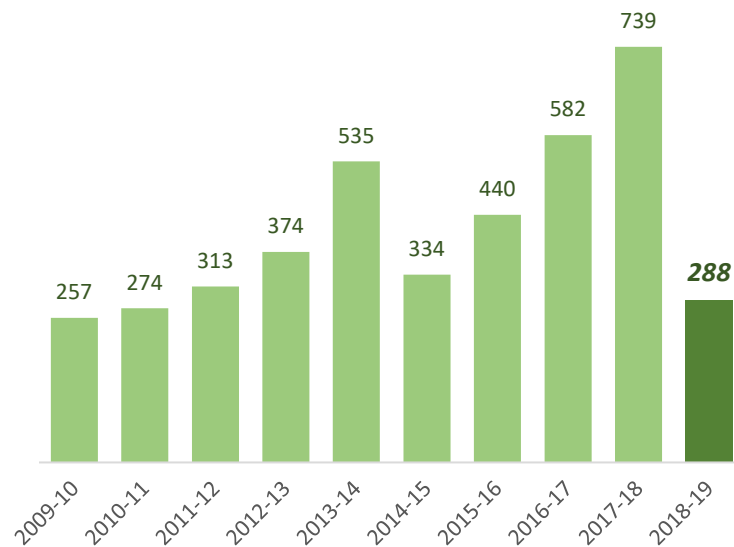
Total Closed to Date:



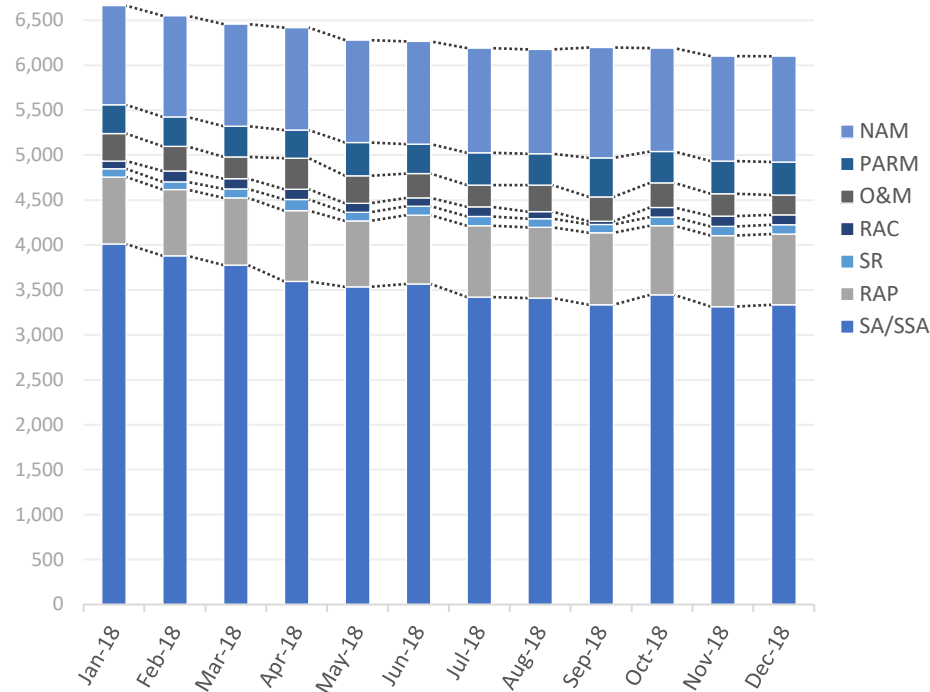
of 700
projected closures

type	closures	% of total
LNFA	23	8%
NFA/SRCO	260	90%
NFAC	5	2%
NREQ	0	0%

Discharge Closures by Fiscal Year

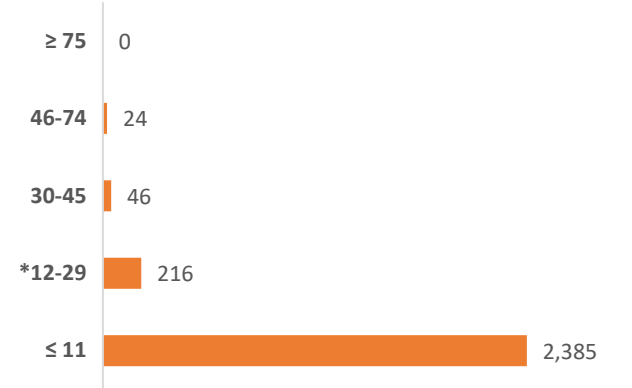


Monthly Snapshot of Active Discharge Sub-Phases



Sub-Phase	Jan-18	Feb-18	Mar-18	Apr-18	May-18	Jun-18	Jul-18	Aug-18	Sep-18	Oct-18	Nov-18	Dec-18
Site Assessment/Supplemental (SA/SSA)	4,010	3,880	3,775	3,596	3,533	3,567	3,420	3,409	3,335	3,445	3,315	3,335
Remedial Action Plan (RAP)	747	736	749	787	735	765	794	788	802	770	790	787
Source Removal (SR)	90	87	99	124	96	99	104	95	90	96	101	104
Remedial Action Construction (RAC)	88	120	116	113	101	95	106	80	36	108	115	110
Operation & Maintenance (O&M)	304	273	240	345	306	270	244	295	272	271	249	221
Post Active Remedial Monitoring (PARM)	320	328	342	314	368	328	358	350	435	351	364	367
Natural Attenuation Monitoring (NAM)	1,104	1,126	1,135	1,140	1,139	1,142	1,163	1,160	1,226	1,148	1,167	1,176

Current Inactive Discharge Scores

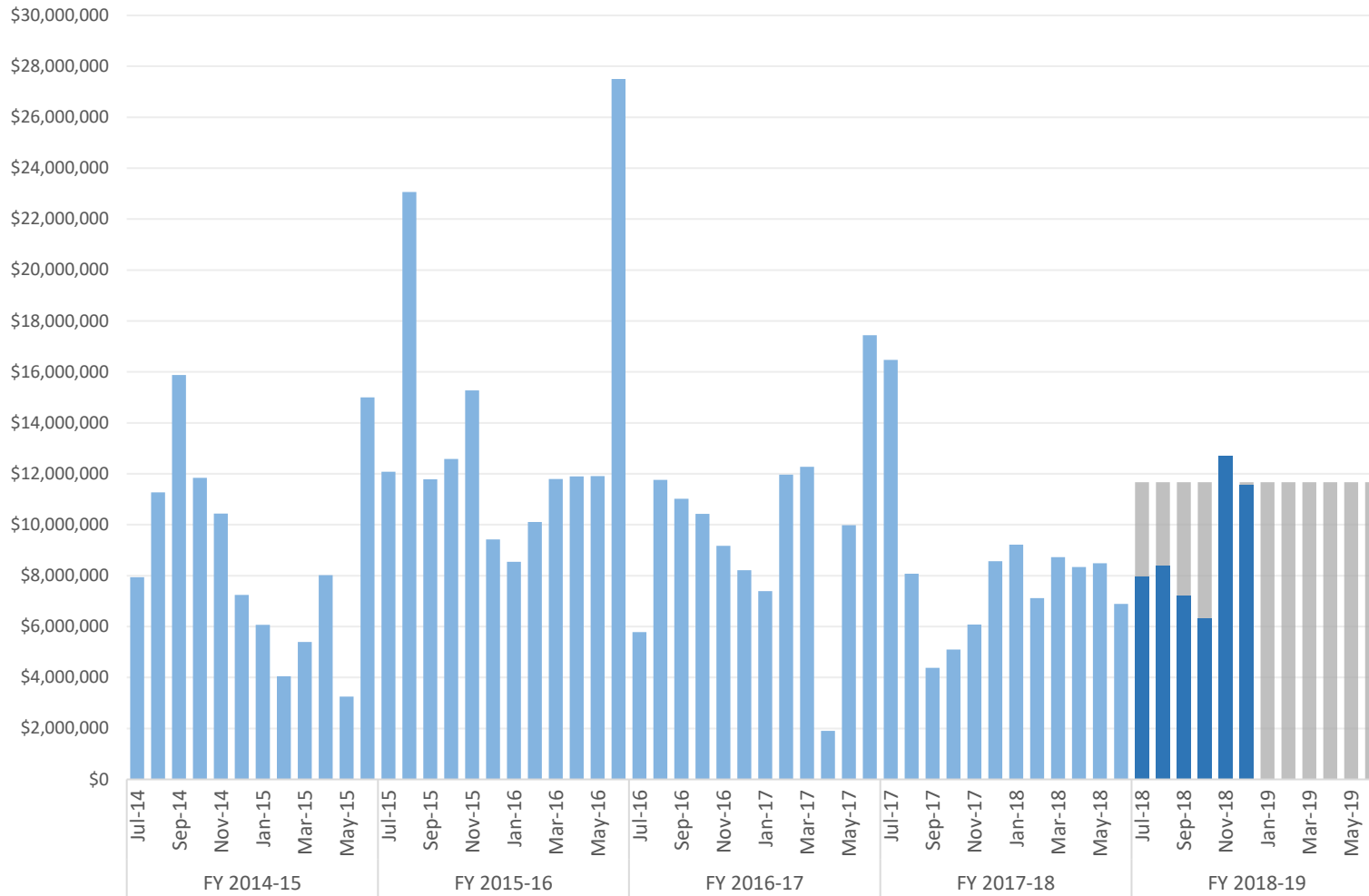


* The current Priority Score Funding Threshold is 12.

Encumbrances, Assignments, & Assessments

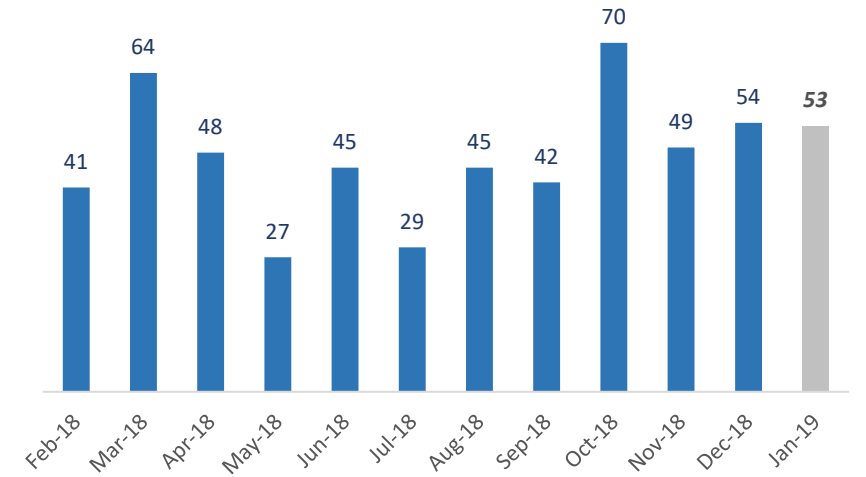
Monthly Net Encumbrance Amounts *(with FY 18-19 projections)*

as of December 26, 2018



CSF Assignments by Month *(with 1-month projection)*

as of December 28, 2018



FY 18-19 New Assessments by Month

as of December 28, 2018

Month	Number of New Assessments
July 2018	45
August 2018	43
September 2018	52
October 2018	39
November 2018	55
December 2018	37
January 2019	
February 2019	
March 2019	
April 2019	
May 2019	
June 2019	
Total	271

Encumbrance Activity

as of December 26, 2018

FY 2018-19 Encumbrances by Month

Month	FY Projection	Encumbered	*Net Encumbered	Net Percentage
July 2018	\$ 11,667,750	\$ 9,244,371	\$ 7,961,274	68%
August 2018	\$ 11,667,750	\$ 10,471,706	\$ 8,410,410	72%
September 2018	\$ 11,667,750	\$ 9,534,673	\$ 7,212,771	62%
October 2018	\$ 11,667,750	\$ 10,005,636	\$ 6,322,746	54%
November 2018	\$ 11,667,750	\$ 12,081,739	\$ 12,716,100	109%
December 2018	\$ 11,667,750	\$ 10,828,281	\$ 11,554,678	99%
January 2019	\$ 11,667,750	-	-	0%
February 2019	\$ 11,667,750	-	-	0%
March 2019	\$ 11,667,750	-	-	0%
April 2019	\$ 11,667,750	-	-	0%
May 2019	\$ 11,667,750	-	-	0%
June 2019	\$ 11,667,248	-	-	0%
Grand Total	\$ 140,012,498	\$ 62,166,405	\$ 54,177,979	39%

FY 2018-19 Fiscal Activity by Phase

Phase	December 2018		FY to Date	
	Count	Amount	Count	Amount
Low Score Site Initiative	44	\$ 647,017	324	\$ 5,107,031
Site Assessment <i>(including LSA)</i>	92	\$ 3,311,574	471	\$ 17,558,817
Source Removal <i>(including FPR)</i>	8	\$ 1,122,175	45	\$ 9,574,845
Remedial Action Plan <i>(including Pilot Test)</i>	39	\$ 887,858	221	\$ 5,559,171
Remedial Action Construction	10	\$ 1,498,955	62	\$ 9,958,819
Operation & Maintenance	24	\$ 2,331,956	74	\$ 7,014,055
Post Active Remedial Monitoring	17	\$ 451,397	79	\$ 2,672,514
Natural Attenuation Monitoring	50	\$ 508,781	305	\$ 3,569,277
Well Abandonment/SRCO	10	\$ 68,568	85	\$ 1,151,879
Sub Total	294	\$ 10,828,281	1,666	\$ 62,166,405

Total Encumbered by Fiscal Year Allocation

Fiscal Year	FCO Appropriation	**Total Encumbered	Appropriation Balance
FY 2017-18 <i>(carry over)</i>	\$ 30,012,498	\$ 30,012,498	\$ 0
FY 2018-19	\$ 110,000,000	\$ 24,554,836	\$ 85,445,164

FY 2018-19 Net Fiscal Activity

Activity	December 2018	FY to Date
Purchase/Work Orders	\$ 10,828,281	\$ 62,166,405
STCM Change Orders & Adjustments	\$ 544,393	\$ (9,177,576)
Utilities	\$ 182,004	\$ 1,189,150
Total**	\$ 11,554,678	\$ 54,177,979

* Includes WOs, POs, COs, Utilities & Adjustments.

** Monthly Net Results totals are calculated from PO/WOs sent to F&A; Total Encumbered by Fiscal Year is calculated from all encumbered in STCM.