

Current Eligible Discharge Statuses

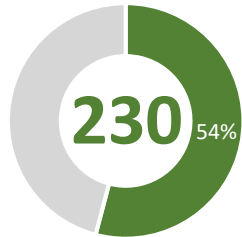
as of January 3, 2021



0% 3% 5% 8% 10% 13% 15% 18% 20% 23% 25% 28% 30% 33% 35% 38% 40% 43% 45% 48% 50% 53% 55% 58% 60% 63% 65% 68% 70% 73% 75% 78% 80% 83% 85% 88% 90% 93% 95% 98% 100%

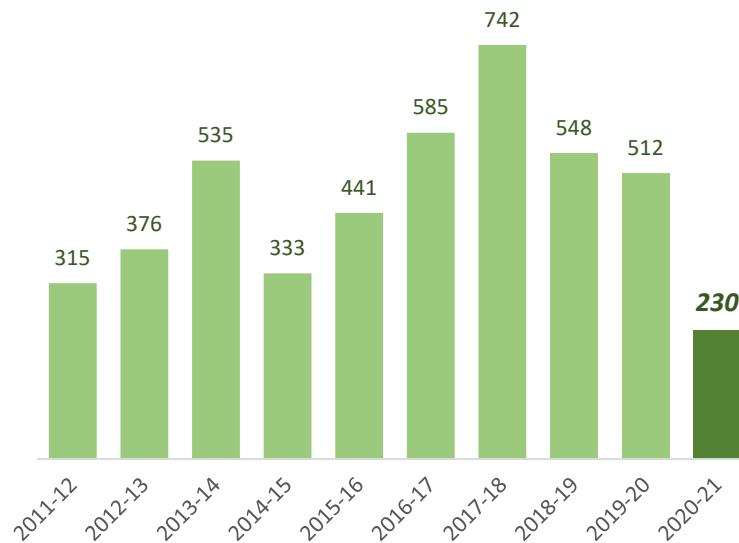
FY 2020-21 Discharges Closed to Date

Total Closed to Date:

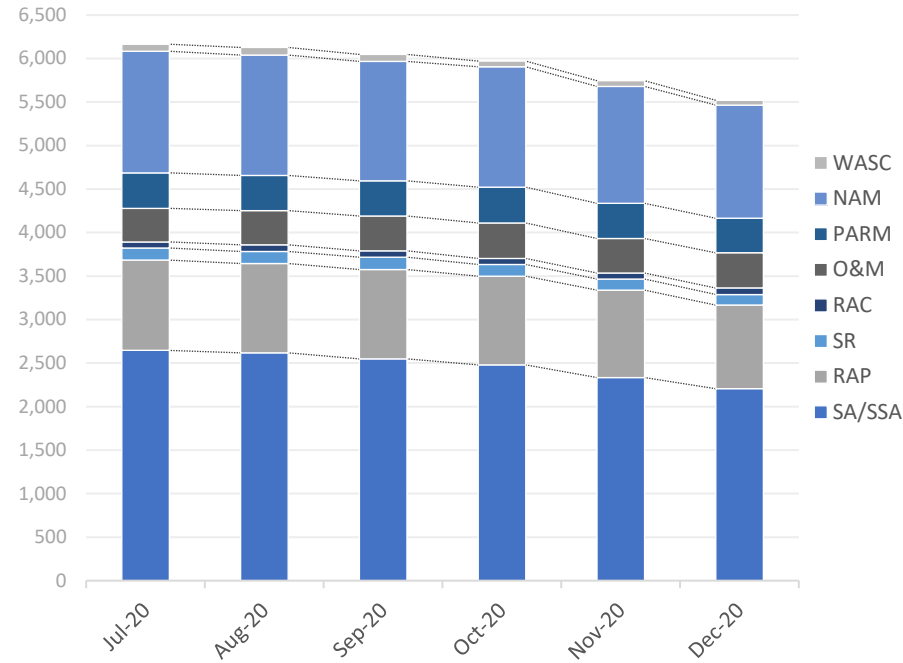


type	closures	% of total
LNFA	13	6%
NFA/SRCO	209	91%
NFAC	8	3%
NREQ	0	0%

Discharge Closures by Fiscal Year

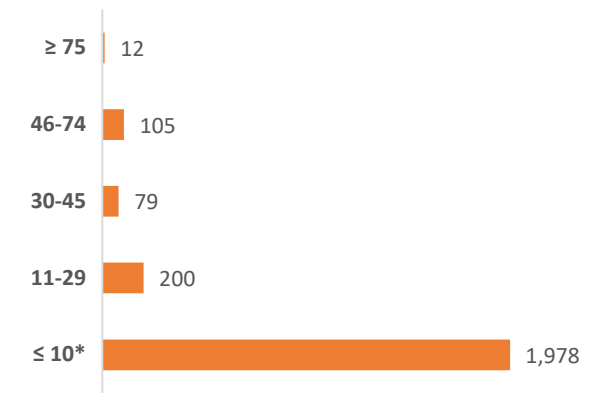


Monthly Snapshot of Active Discharge Sub-Phases



Sub-Phase	Jul-20	Aug-20	Sep-20	Oct-20	Nov-20	Dec-20	Jan-21	Feb-21	Mar-21	Apr-21	May-21	Jun-21
Site Assessment/Supplemental (SA/SSA)	2,646	2,618	2,549	2,478	2,334	2,206						
Remedial Action Plan (RAP)	1,038	1,025	1,026	1,022	1,005	961						
Source Removal (SR)	139	141	142	133	128	122						
Remedial Action Construction (RAC)	70	74	74	71	67	74						
Operation & Maintenance (O&M)	386	396	400	405	400	405						
Post Active Remedial Monitoring (PARM)	408	402	403	413	402	397						
Natural Attenuation Monitoring (NAM)	1,397	1,385	1,375	1,385	1,343	1,301						
Well Abandonment/SRCO (WASC)	81	86	77	63	65	55						

Current Inactive Discharge Scores

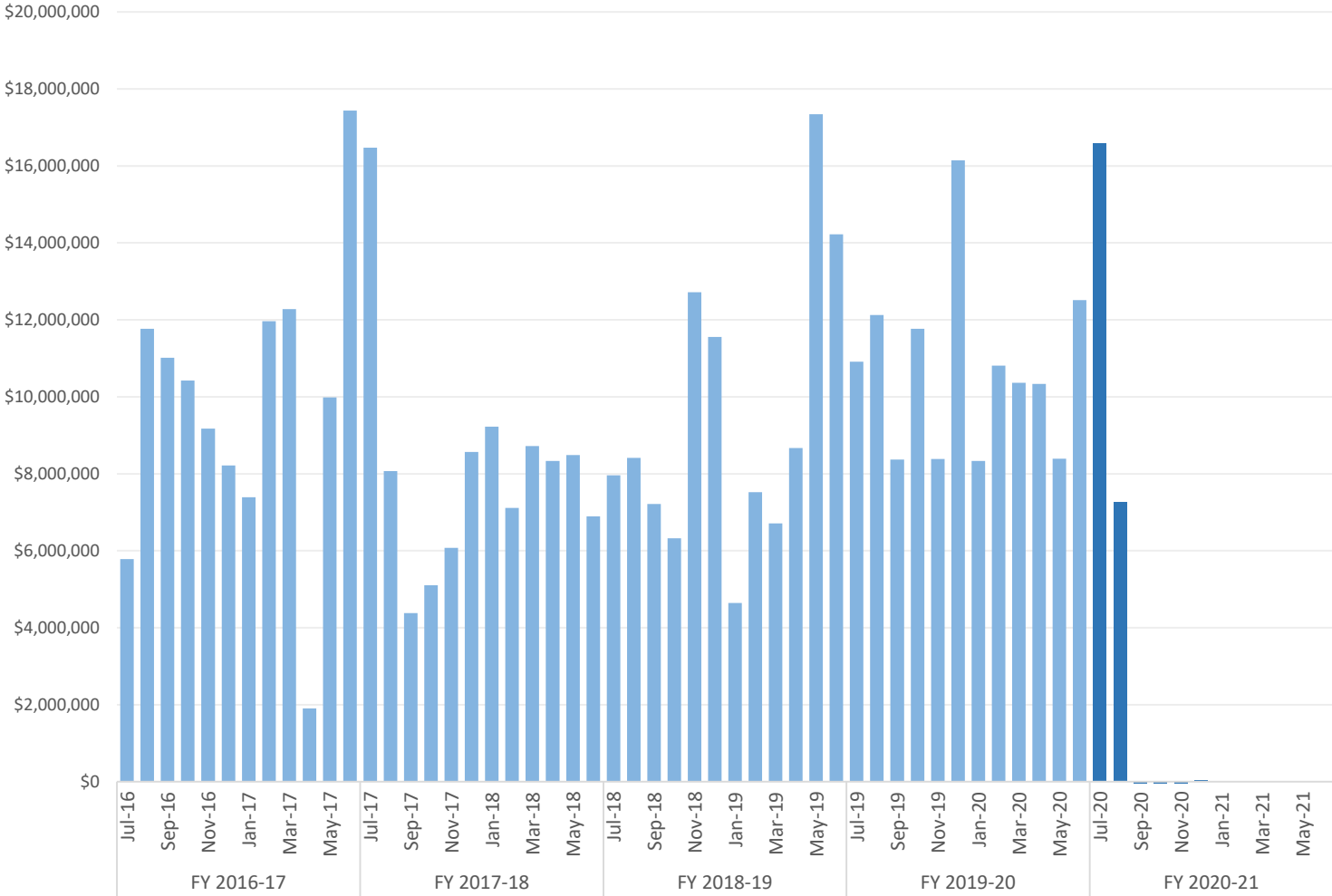


* The current Priority Score Funding Threshold is 11.

Encumbrances, Assignments, & Assessments

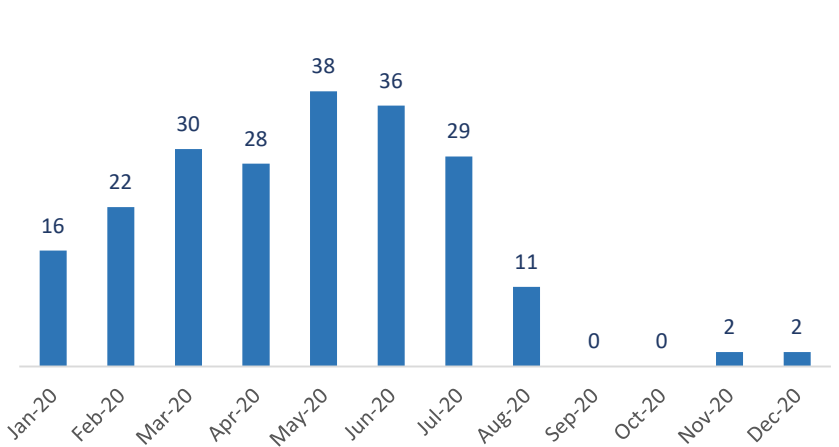
Monthly Net Encumbrance Amounts (FY 2016-17 thru present)

as of December 30, 2020



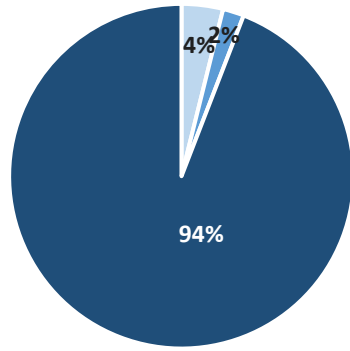
CSF Assignments by Month

as of January 3, 2021



Current Eligible Discharge Assessment Statuses

as of January 3, 2021



Assessment Status	Discharges
Needed	307
Ongoing	157
Report Approved*	7,431

* Does not include 11,598 completed discharges.

Encumbrance Activity

as of December 30, 2020

FY 2020-21 Encumbrances by Month

Month	WO/PO Encumbered	*Net Encumbered
July 2020	\$ 11,813,915	\$ 16,594,721
August 2020	\$ 10,454,498	\$ 7,254,320
September 2020	\$ 2,524,065	\$ (2,970,265)
October 2020	\$ 3,099,629	\$ (6,178,012)
November 2020	\$ 1,867,006	\$ (817,684)
December 2020	\$ 3,072,783	\$ 26,783
January 2021	-	-
February 2021	-	-
March 2021	-	-
April 2021	-	-
May 2021	-	-
June 2021	-	-
Grand Total	\$ 32,831,895	\$ 13,909,864

Total Encumbered by Fiscal Year Allocation

Fiscal Year	FCO Appropriation	**Total Encumbered	Appropriation Balance
Carry-Over	\$ 4,530,701	\$ 4,530,701	\$ 0
FY 2020-21	\$ 115,000,000	\$ 13,155,002	\$ 101,844,998

* Includes WOs, POs, COs, Utilities & Adjustments.

** Monthly Net Results totals are calculated from PO/WOs sent to F&A; Total Encumbered by Fiscal Year is calculated from all encumbered in STCM.

FY 2020-21 Fiscal Activity by Phase

Phase	December 2020		FY to Date	
	Count	Amount	Count	Amount
Low Score Site Initiative	9	\$ 38,569	107	\$ 1,258,320
Site Assessment (incl. LSA)	0	\$ 0	148	\$ 4,841,399
Source Removal (incl. FPR)	0	\$ 0	17	\$ 4,849,021
Remedial Action Plan (incl. Pilot Test)	58	\$ 492,246	118	\$ 1,495,063
Remedial Action Construction	0	\$ 0	34	\$ 4,311,959
Operation & Maintenance	34	\$ 2,061,149	157	\$ 13,455,096
Post Active Remedial Monitoring	38	\$ 348,185	51	\$ 607,303
Natural Attenuation Monitoring	0	\$ 0	86	\$ 1,118,469
Well Abandonment/SRCO	17	\$ 132,634	104	\$ 895,265
Sub Total	156	\$ 3,072,783	822	\$ 32,831,895

Note: Well Abandonment includes POs for Verification for Well Abandonment. LSSI Obligations are reflected only after signed and returned from Contractor and include costs for Well Abandonment Activities under LSSI Cleanup.

FY 2020-21 Net Fiscal Activity

Activity	December 2020	FY to Date
Purchase/Work Orders	\$ 3,072,783	\$ 32,831,895
Change Orders & Adjustments	\$ (3,321,446)	\$ (20,343,443)
Utilities	\$ 275,447	\$ 1,421,411
Total**	\$ 26,783	\$ 13,909,864